

B E E C H C R A F T
DUKE B60
I L L U S T R A T E D P A R T S C A T A L O G

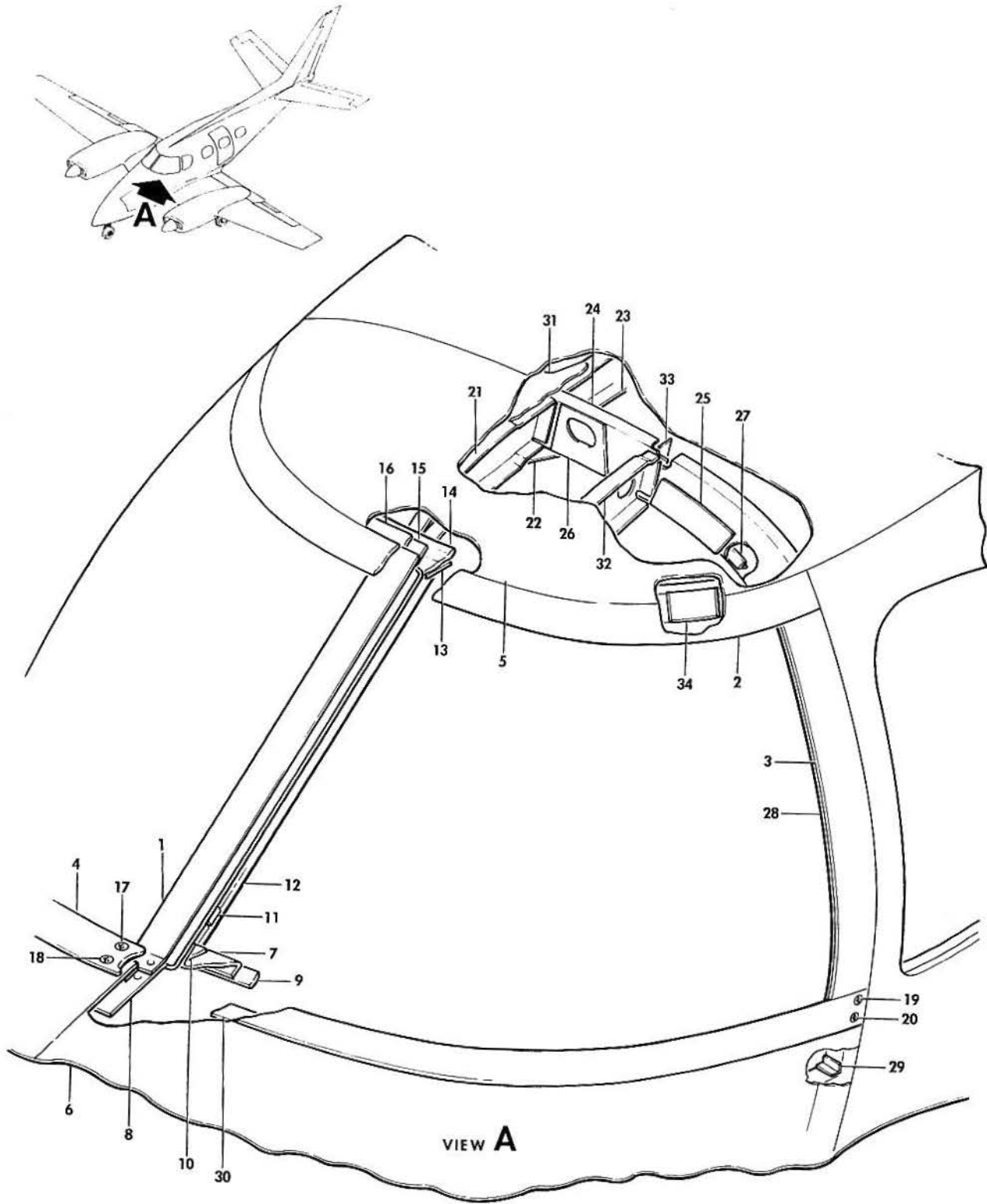
LIST OF PAGES & TABLE OF CONTENTS
FOR
CHAPTER 56-00-00 WINDOWS

CHAP/SUB- SECT & UNIT	PAGE NO.	EFFECTIVE DATE	TABLE OF CONTENTS
56-00-00	1	04/19/84. LIST OF PAGES & TABLE OF CONTENTS
56-10-01	1	03/20/81. WINDSHIELD AND WINDOWS.
56-10-01	2	03/20/81	
56-10-01	3	03/20/81	
56-10-01	4	03/20/81	
56-10-01	5	04/19/84	
56-20-01	1	03/20/81. CABIN WINDOWS
56-20-01	2	01/08/82	
56-20-01	3	04/19/84	

B E E C H C R A F T
DUKE B60
I L L U S T R A T E D P A R T S C A T A L O G

56-10-01
WINDSHIELD AND WINDOWS

BEECHCRAFT
DUKE B60
ILLUSTRATED PARTS CATALOG

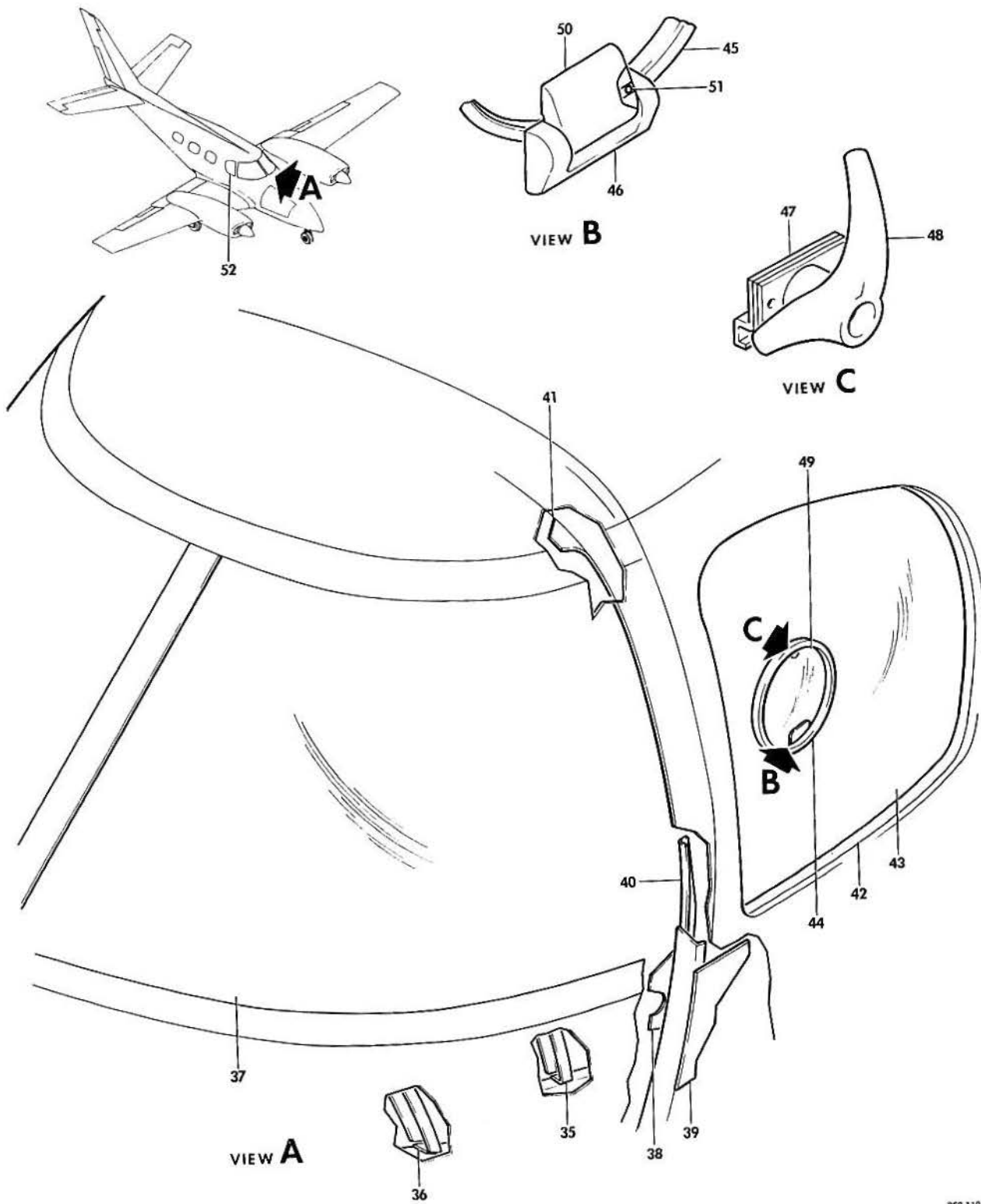


B60-110-6

B E E C H C R A F T
DUKE B60
I L L U S T R A T E D P A R T S C A T A L O G

GAMA/ATA CODE & INDEX NO.	PART NO.	DESCRIPTION							UNITS PER ASSY	USABLE ON CODE
		1	2	3	4	5	6	7		
10-01	60-420011-601	ENCLOSURE ASSY, COCKPIT.	1	
- 1	60-420011-1	. RETAINER, MIDDLE	1	
- 2	60-420011-3	. RETAINER, TOP.	1	
- 3	60-420011-11	. RETAINER, LH	1	
	60-420011-12	. RETAINER, RH	1	
- 4	60-420011-9	. RETAINER, LOWER.	1	
- 5	60-420011-5	. SKIN, UPPER.	1	
- 6	60-420011-91	. SKIN, LH LOWER	1	
	60-420011-92	. SKIN, RH LOWER	1	
- 7	60-420011-15	. CHANNEL, LOWER LH.	1	
	60-420011-16	. CHANNEL, LOWER RH.	1	
- 8	60-420011-17	. CHANNEL, LOWER	1	
- 9	60-420011-47	. STRAP, LOWER	2	
- 10	60-420011-45	. CLIP, LH LOWER	1	
	60-420011-46	. CLIP, RH LOWER	1	
- 11	60-420011-75	. CLIP.	1	
- 12	60-420011-25	. POST, CENTER	1	
- 13	60-420011-49	. CLIP, LH	1	
	60-420011-50	. CLIP, RH	1	
- 14	60-420011-113	. CHANNEL, LH.	1	
	60-420011-114	. CHANNEL, RH.	1	
- 15	60-420011-19	. CHANNEL	1	
- 16	60-420011-23	. STRIP	1	
- 17	MS24694S57	. SCREW	92	
	NAS680A3	. NUTPLATE	180	
	NAS697A3	. NUTPLATE	38	
	NAS698A3	. NUTPLATE	2	
- 18	MS24694S50	. SCREW	64	
- 19	MS24694S58	. SCREW	30	
- 20	MS24694S53	. SCREW	34	
- 21	60-420011-29	. CHANNEL, LH UPPER.	1	
	60-420011-30	. CHANNEL, RH UPPER.	1	
- 22	60-420011-31	. DOUBLER, UPPER	1	
- 23	60-420011-67	. CHANNEL	1	
	60-420011-69	. CHANNEL	1	
	60-420011-603	. FRAME ASSY, UPPER.	1	
- 24	60-420011-93	. FRAME, UPPER	1	
- 25	60-420011-83	. SPACER	1	
- 26	60-420011-85	. BRACKET, LH.	1	
	60-420011-86	. BRACKET, RH.	1	
- 27	60-420011-37	. ANGLE	1	
	MS35489-1	. GROMMET	1	
	130006A632	. NUTPLATE	2	1
- 28	60-420011-35	. FRAME, LH.	1	
	60-420011-36	. FRAME, RH.	1	
- 29	60-420011-117	. CLIP, LH	1	
	60-420011-118	. CLIP, RH	1	
- 30	60-420011-21	. STRIP, LH.	1	
	60-420011-22	. STRIP, RH.	1	
- 31	60-420011-27	. DOUBLER	1	
- 32	60-420011-43	. FORMER, LH	1	
	60-420011-44	. FORMER, RH	1	
- 33	60-420011-51	. CLIP, LH	1	
	60-420011-52	. CLIP, RH	1	
- 34	60-420011-89	. CHANNEL	2	
	K1000-08	. NUTPLATE.	6	

BEECHCRAFT
DUKE B60
ILLUSTRATED PARTS CATALOG



360-110-7

B E E C H C R A F T
DUKE B60
I L L U S T R A T E D P A R T S C A T A L O G

SUB-SECT UNIT & ITEM NO.	PART NO.	1	2	3	4	5	6	7	DESCRIPTION	UNITS PER ASSY	USABLE ON CODE
10-01 - 35	60-420011-55	FORMER,LH LOWER	1	
	60-420011-56	FORMER,RH LOWER	1	
- 36	60-420011-57	FORMER,LH LOWER	1	
	60-420011-58	FORMER,RH LOWER	1	
	60-324023-13	BRACKET,SUB-PANEL LH.	1	
	60-324023-14	BRACKET,SUB-PANEL RH.	1	
	60-530020-27	SUPPORT,GLARE SHIELD.	2	
	NAS1670-08-6	FASTENER,BLIND.	2	
	60-530085-45	RETAINER,LH	1	
	60-530085-46	RETAINER,RH	1	
- 37	60-384008-1	WINDSHIELD,LH COCKPIT	1	
	60-384008-2	WINDSHIELD,RH COCKPIT	1	
	60-384009-3	WINDSHIELD,LH HEATED/OPT/	1	
R	60-384081-5	VOLTMETER,INDICATOR	1	4
R	60-384089-5	VOLTMETER,INDICATOR	1	3
R	60-384089-7	VOLTMETER,INDICATOR	1	2
	35-380053-21	SWITCH,HEATED WINDSHIELD.	1	2
- 38	60-420011-61	DOUBLER,LH.	1	
	60-420011-62	DOUBLER,RH.	1	
	60-420011-81	CLIP/RH SIDE ONLY/.	1	1
- 39	60-420011-63	DOUBLER,LH.	1	
	60-420011-64	DOUBLER,RH.	1	
- 40	60-420011-39	ANGLE,LH.	1	
	60-420011-40	ANGLE,RH.	1	
- 41	60-420011-79	DOUBLER,LH.	1	
	60-420011-80	DOUBLER,RH.	1	
- 42	R 60-530085-119	FRAME,LH COCKPIT WINDOW	1	5
	R 60-530085-149	FRAME,LH COCKPIT WINDOW	1	6
	R 60-530085-99	FRAME,RH COCKPIT WINDOW	1	5
	R 60-530085-151	FRAME,RH COCKPIT WINDOW	1	6
	R 60-530085-27	TRIM,RH COCKPIT WINDOW.	1	5
	R 60-530085-153	TRIM,RH COCKPIT WINDOW.	1	6
	R 60-530085-41	SPACER.	AR	
	R 60-530085-43	SPACER.	AR	
	60-420013-59	WINDOW ASSY,LH COCKPIT.	1	
	60-420013-63	WINDOW ASSY	1	
- 43	60-420013-61	WINDOW.	1	
- 44	60-420013-47	FRAME,STORM WINDOW.	1	
- 45	60-420013-5	SEAL,STORM WINDOW	1	
- 46	60-420021-3	HINGE HALF,STORM WINDOW	1	
	60-420013-49	SPACER,STORM WINDOW LATCH	1	
	HL19PB5-4	PIN,HI-LOCK	2	
- 47	60-420025	SPACER,STORM WINDOW LATCH	AR	
	60-420013-51	PLUG,HANDLE	1	
	CLOE0832SCAD	NUT	2	
- 48	60-420023	LATCH ASSY,STORM WINDOW	1	
	60-420013-9	WINDOW ASSY,STORM	1	
- 49	60-420013-13	WINDOW,STORM.	1	
- 50	60-420020-1	HINGE HALF,STORM WINDOW	1	
	60-420026	STRIKER,STORM WINDOW.	1	
- 51	NAS1081C04A3L	SCREW,HINGE PIN SET	2	
R	60-420013-41	PIN,STORM WINDOW HINGE.	1	
- 52	60-420014-1	WINDOW,RH COCKPIT OUTER	1	
R	60-530085-31	WINDOW,RH COCKPIT INNER	1	

CODES OF EFFECTIVITY

1	P-247 THRU P-262	2	P-556 AND AFTER
3	P-459 THRU P-555	4	P-247 THRU P-458
5	P-123, P-127 THRU P-221	6	P-222 AND AFTER

BEECHCRAFT
DUKE B60
ILLUSTRATED PARTS CATALOG

56-20-01
CABIN WINDOWS

BEECHCRAFT
DUKE B60
ILLUSTRATED PARTS CATALOG

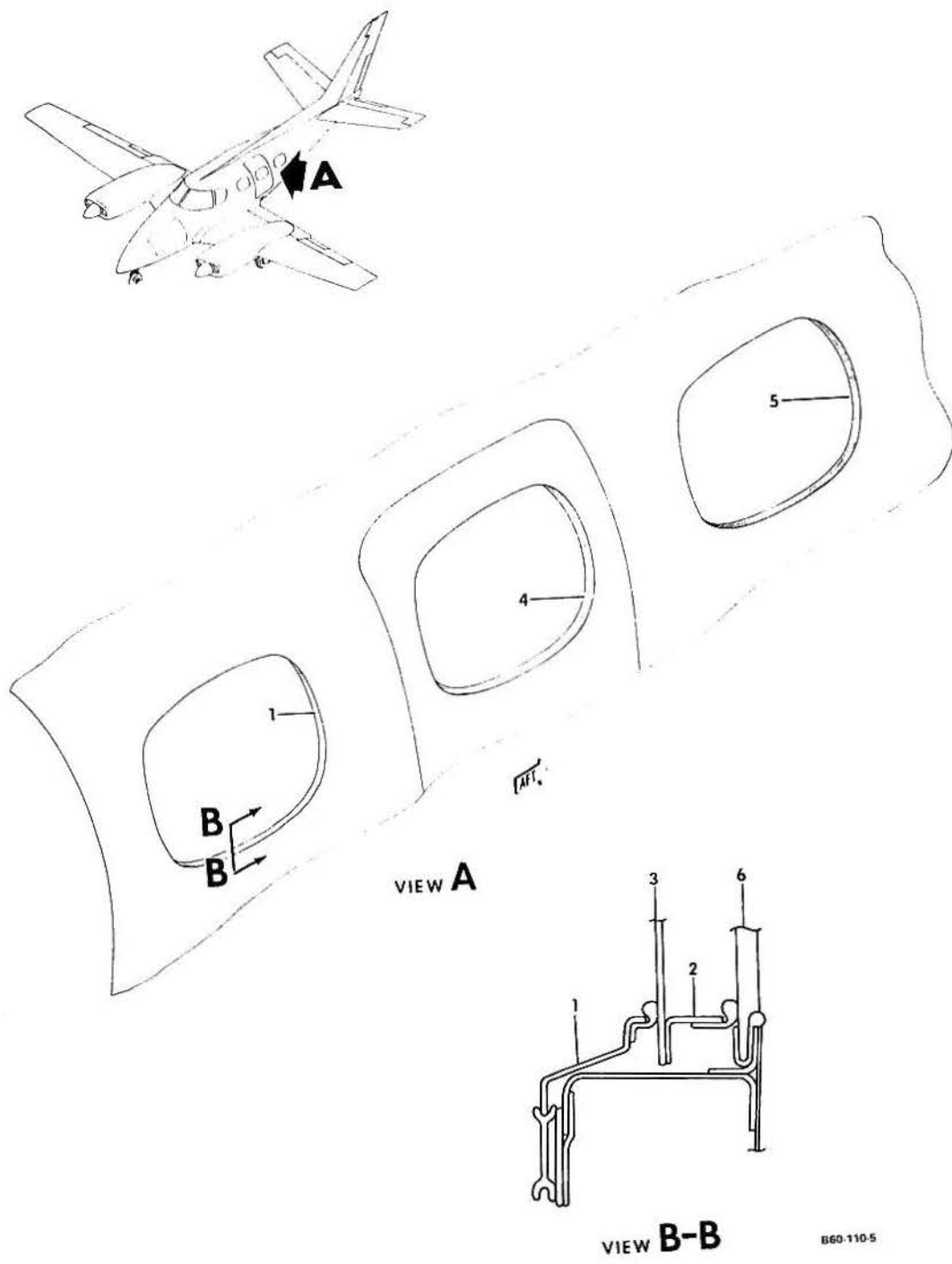


FIGURE 20-01.CABIN WINDOWS

B E E C H C R A F T
DUKE B60
I L L U S T R A T E D P A R T S C A T A L O G

SUB-SECT UNIT & ITEM NO.	PART NO.	DESCRIPTION							UNITS PER ASSY	USABLE ON CODE
		1	2	3	4	5	6	7		
20-01	60-530085-89	FRAME, INSTL, CABIN WINDOW.	NP	
- 1	60-530085-93	. FRAME, LH WINDOW/FWD CABIN/.	1	
	60-530085-125	. FRAME, RH WINDOW/FWD CABIN/.	1	
- 2	R 60-530085-85	. TRIM.	6	1
	R 60-530085-155	. TRIM.	6	2
- 3	60-530085-123	. WINDOW, INNER.	6	
- 4	60-530085-95	. FRAME, LH WINDOW/DOOR/	1	
	60-530085-103	. FRAME, RH WINDOW/CENTER CABIN/	1	
- 5	60-530085-97	. FRAME, LH REAR WINDOW/AFT CABIN/	1	
	60-530085-105	. FRAME, RH REAR WINDOW/AFT CABIN/	1	
	R 60-530085-23	. GIMP.	6	1
	R 60-530085-19	. GIMP.	2	4
	R 60-530085-25	. GIMP.	1	4
	R 60-530085-161	. MOLDING	1	3
	R 60-530085-159	. MOLDING	1	3
	R 60-530085-157	. MOLDING	1	3
- 6	R 60-430294-3	WINDOW, CABIN/OUTER/	6	
	60-430294-3	WINDOW, DOOR/SEE CHAPTER 52/	1	
	60-430294-3	WINDOW, ESCAPE HATCH/SEE CHAPTER 52/	1	

CODES OF EFFECTIVITY

1 P-247 THRU P-391	2 P-392 AND AFTER
3 P-438 AND AFTER	4 P-247 THRU P-437

