

B E E C H C R A F T
DUKE B60
I L L U S T R A T E D P A R T S C A T A L O G

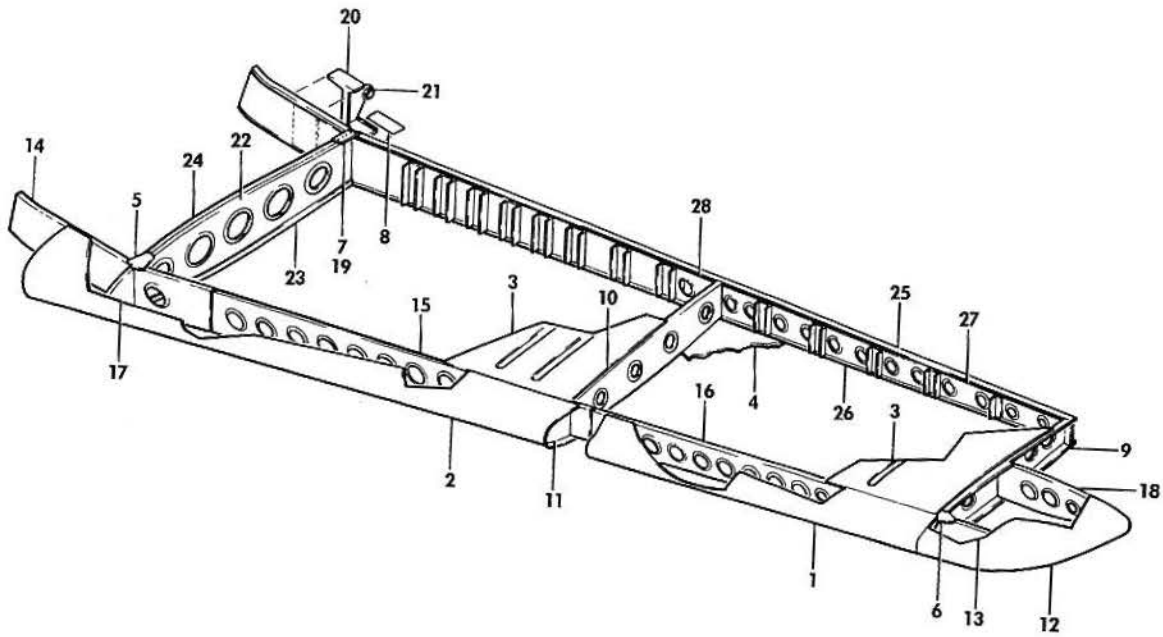
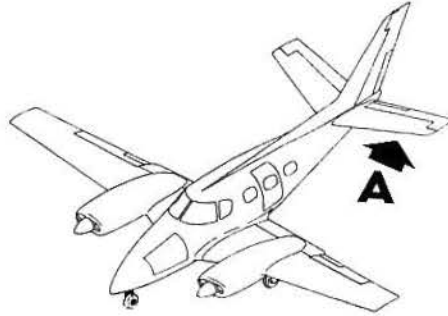
LIST OF PAGES & TABLE OF CONTENTS
FOR
CHAPTER 55-00-00 STABILIZERS

SYS/SUB-SYS/ CHAP SECTION	PAGE NO.	EFFECTIVE DATE	TABLE OF CONTENTS
55-00-00	1	04/16/82. LIST OF PAGES & TABLE OF CONTENTS
55-10-01	1	03/20/81. HORIZONTAL STABILIZER
55-10-01	2	03/20/81	
55-10-01	3	03/20/81	
55-10-01	4	03/20/81	
55-10-01	5	03/20/81	
55-20-01	1	03/20/81. ELEVATOR AND TAB.
55-20-01	2	03/20/81	
55-20-01	3	03/20/81	
55-20-01	4	03/20/81	
55-20-01	5	03/20/81	
55-20-01	6	03/20/81	
55-20-01	7	03/20/81	
55-30-01	1	03/20/81. VERTICAL STABILIZER AND DORSAL FIN.
55-30-01	2	03/20/81	
55-30-01	3	04/16/82	
55-30-01	4	01/08/82	
55-30-01	5	03/20/81	
55-40-01	1	03/20/81. RUDDER AND TAB.
55-40-01	2	03/20/81	
55-40-01	3	03/20/81	
55-40-01	4	03/20/81	
55-40-01	5	04/16/82	
55-50-01	1	03/20/81. EMPENNAGE INSTALLATION.
55-50-01	2	03/20/81	
55-50-01	3	03/20/81	
55-50-01	4	03/20/81	
55-50-01	5	03/20/81	

BEECHCRAFT
DUKE B60
ILLUSTRATED PARTS CATALOG

55-10-01
HORIZONTAL STABILIZER

BEECHCRAFT
DUKE B6G
ILLUSTRATED PARTS CATALOG



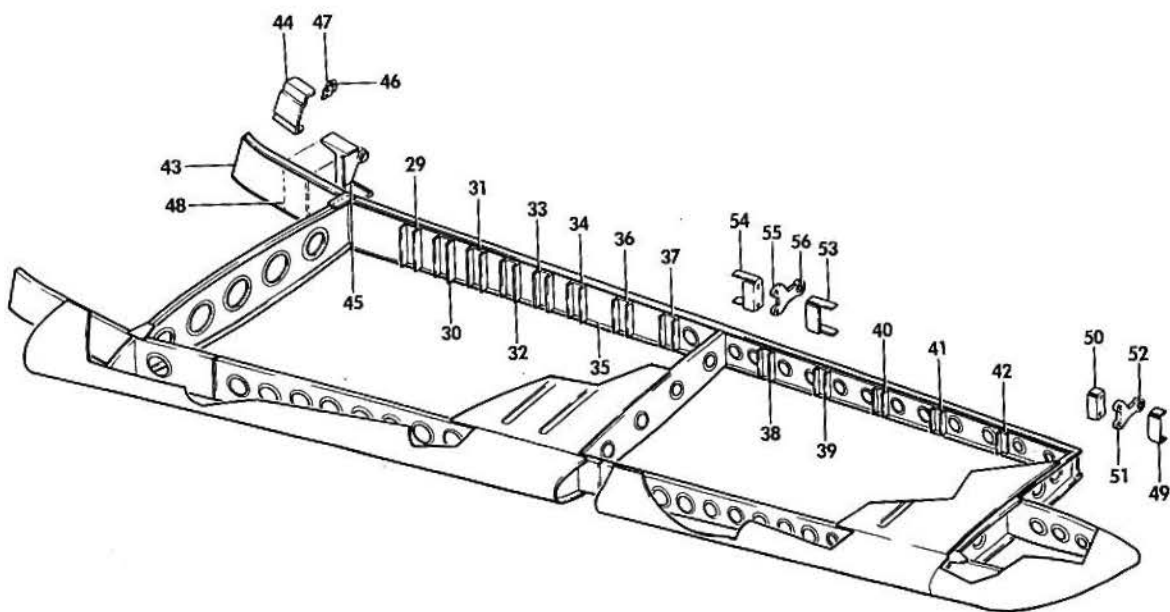
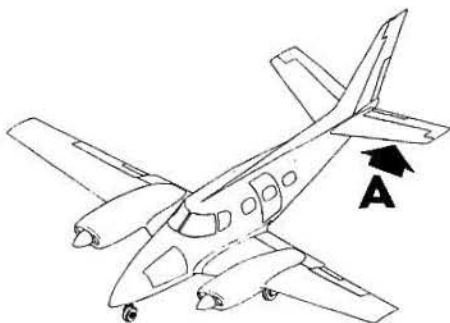
VIEW A

860-132-2

B E E C H C R A F T
DUKE B60
I L L U S T R A T E D P A R T S C A T A L O G

GAMA/ATA CODE & INDEX NO.	PART NO.	DESCRIPTION	UNITS PER ASSY	USABLE ON CODE
		1 2 3 4 5 6 7		
10-01	60-620000-601	STABILIZER ASSY,HORIZONTAL.	1	
- 1	60-620000-3	. SKIN,OUTBD LEADING EDGE LH AND RH	2	
- 2	60-620000-7	. SKIN,LH INBD LEADING EDGE	1	
	60-620000-8	. SKIN,RH INBD LEADING EDGE	1	
- 3	60-620000-25	. SKIN ASSY,LH UPPER BONDED	1	
	60-620000-26	. SKIN ASSY,RH UPPER BONDED	1	
- 4	60-620000-27	. SKIN ASSY,LH LOWER BONDED	1	
	60-620000-28	. SKIN ASSY,RH LOWER BONDED	1	
- 5	60-620000-33	. GUSSET,UPPER & LOWER.	4	
	60-620000-57	. CLIP,OUTBOARD LEADING EDGE/STA 90.76/	2	
- 6	60-620000-59	. DOUBLER,LEADING EDGE/STA 90.76/	4	
- 7	60-620000-61	. PLATE,UPPER & LOWER INBD TRAILING EDGE.	4	
- 8	60-620000-63	. SHIM,TRAILING EDGE.	1	
- 9	60-620013	. RIB,OUTBOARD.	2	
- 10	60-620014	. RIB,CENTER /STA 53.850/	2	
- 11	60-620016	. RIB,CENTER LEADING EDGE /STA 53.850/.	2	
- 12	60-620017	. TIP,STABILIZER.	2	
- 13	60-620018	. RIB,STABILIZER TIP FWD.	2	
	60-620012	. SPAR ASSY,LEADING EDGE CENTER	1	
- 14	60-620012-1	. . SPAR,CENTER LEADING EDGE.	1	
- 15	60-620012-3	. . SPAR,INBOARD LEADING EDGE	2	
- 16	60-620012-5	. . SPAR,OUTBOARD LEADING EDGE.	2	
	60-620012-15	. . ANGLE,LEADING EDGE SPAR CENTER UPPER.	1	
	60-620012-17	. . ANGLE,LEADING EDGE SPAR CENTER LOWER.	1	
	60-620012-19	. . DOUBLER,LEADING EDGE SPAR CENTER.	1	
	60-620012-21	. . ANGLE,LEADING EDGE SPAR INBOARD LH.	1	
	60-620012-22	. . ANGLE,LEADING EDGE SPAR INBOARD RH.	1	
	60-620012-23	. . ANGLE,LEADING EDGE SPAR OUTBOARD LH	1	
	60-620012-24	. . ANGLE,LEADING EDGE SPAR OUTBOARD RH	1	
- 17	60-620022	. RIB,INBOARD LEADING EDGE /STA 12.00/.	2	
- 18	60-620026	. RIB,TIP AFT	2	
	60-620000-37	. CLIP,TRAILING EDGE SPAR /STA 53.850/.	2	
	60-620000-39	. CLIP,TRAILING EDGE SPAR INBD /STA 12.00/.	2	
- 19	NAS1670-3-4	. FASTENER,STABILIZER /STA 12.00/	6	
	NAS1670-3-6	. FASTENER,STABILIZER /STA 12.00/	6	
	60-620000-87	. SUPPORT ASSY,AFT ELEVATOR BEARING LH.	1	
	60-620000-88	. SUPPORT ASSY,AFT ELEVATOR BEARING RH.	1	
		/ATTACHING PARTS/		
	MS27039-1-15	. SCREW	6	
	AN960-10L	. WASHER.	6	
	130909N29	. NUT	6	
		*		
- 20	60-620000-77	. . SUPPORT,LH.	1	
	60-620000-78	. . SUPPORT,RH.	1	
- 21	MS20218-1	. . BEARING,SUPPORT	2	
	60-620015-601	. RIB ASSY,INBOARD.	2	
- 22	60-620015-1	. . WEB,INBOARD RIB	1	
- 23	60-620015-3	. . CAP,INBOARD RIB	1	
- 24	60-620015-4	. . CAP,INBOARD RIB	1	
	60-620000-67	. FILLER,FRONT SPAR /STA 12.00/	2	
	60-620000-69	. ANGLE,FRONT SPAR /STA 12.00/.	2	
	60-620000-70	. ANGLE,FRONT SPAR /STA 12.00/.	2	
	60-620000-71	. CLIP,LH UPPER SPAR TRAILING EDGE.	1	
	60-620000-72	. CLIP,LH LOWER SPAR TRAILING EDGE.	1	
	60-620000-73	. CLIP,LH UPPER SPAR TRAILING EDGE.	1	
	60-620000-74	. CLIP,RH LOWER SPAR TRAILING EDGE.	1	
	60-620011-601	. SPAR ASSY,TRAILING EDGE	1	
- 25	60-620011-1	. . SPAR,TRAILING EDGE UPPER.	1	
- 26	60-620011-3	. . SPAR,TRAILING EDGE LOWER.	1	
- 27	60-620011-5	. . WEB,TRAILING EDGE SPAR OUTBOARD	2	
- 28	60-620011-7	. . WEB,TRAILING EDGE SPAR INBOARD.	2	

BEECHCRAFT
DUKE B60
ILLUSTRATED PARTS CATALOG



VIEW **A**

B60-132-3

B E E C H C R A F T
DUKE B60
I L L U S T R A T E D P A R T S C A T A L O G

GAMA/ATA CODE & INDEX NO.	PART NO.	DESCRIPTION							UNITS PER ASSY	USABLE ON CODE
		1	2	3	4	5	6	7		
10-01 - 29	60-620011-9	2	
- 30	60-620011-11	2	
- 31	60-620011-35	2	
- 32	60-620011-33	2	
- 33	60-620011-31	2	
- 34	60-620011-29	2	
- 35	60-620011-37	2	
- 36	60-620011-27	2	
- 37	60-620011-25	2	
- 38	60-620011-23	2	
- 39	60-620011-21	2	
- 40	60-620011-19	2	
- 41	60-620011-17	2	
- 42	60-620011-15	2	
- 43	60-620011-39	1	
	60-620011-47	1	
- 44	60-620021-1	1	
- 45	60-620011-43	2	
- 46	35-660033	2	
- 47	60-524107	2	
- 48	60-524079	2	
	NAS1446-5	4	
	NAS1080C6	4	
	NAS1448-7	4	
	NAS1080C8	4	
	130909N29	3	
	MS27039-1-06	2	
	MS27039-1-16	2	

- 49	60-620019-1	2	
- 50	60-620019-2	2	
	60-620019-601	2	
- 51	60-620019-3	1	
- 52	MS27261KSP4A	1	
- 53	60-620020-1	2	
- 54	60-620020-2	2	
	60-620020-601	2	
- 55	60-620020-3	1	
- 56	MS27261KSP4A	1	
	60-620000-75	1	
	60-620000-79	1	
	60-620000-80	1	
	60-620000-81	1	
	60-620000-82	1	
	60-620000-83	1	
	60-620000-84	1	
	60-620000-85	1	
	60-620000-86	1	

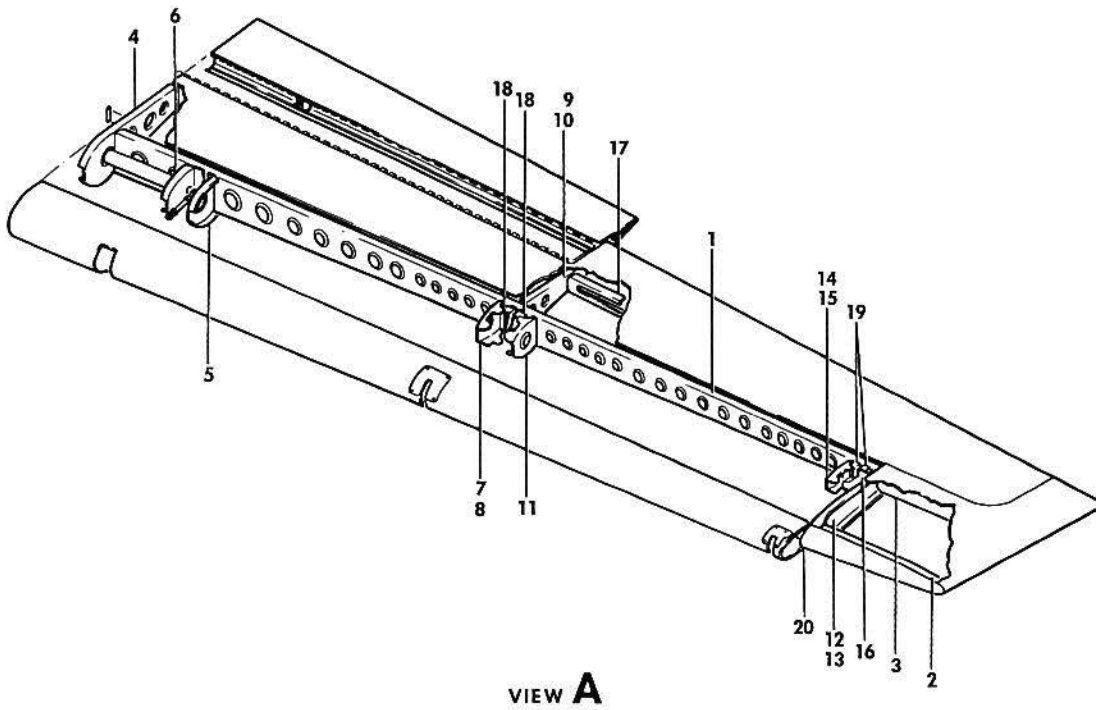
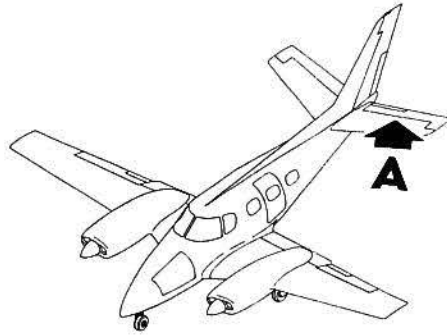
	MS24694S57	1	
	AN960-10	1	
	130909N29	1	

	60-620000-65	1	
	60-620000-66	1	
	60-620025	1	

B E E C H C R A F T
DUKE B60
I L L U S T R A T E D P A R T S C A T A L O G

55-20-01
ELEVATOR AND TAB

BEECHCRAFT
DUKE B60
ILLUSTRATED PARTS CATALOG

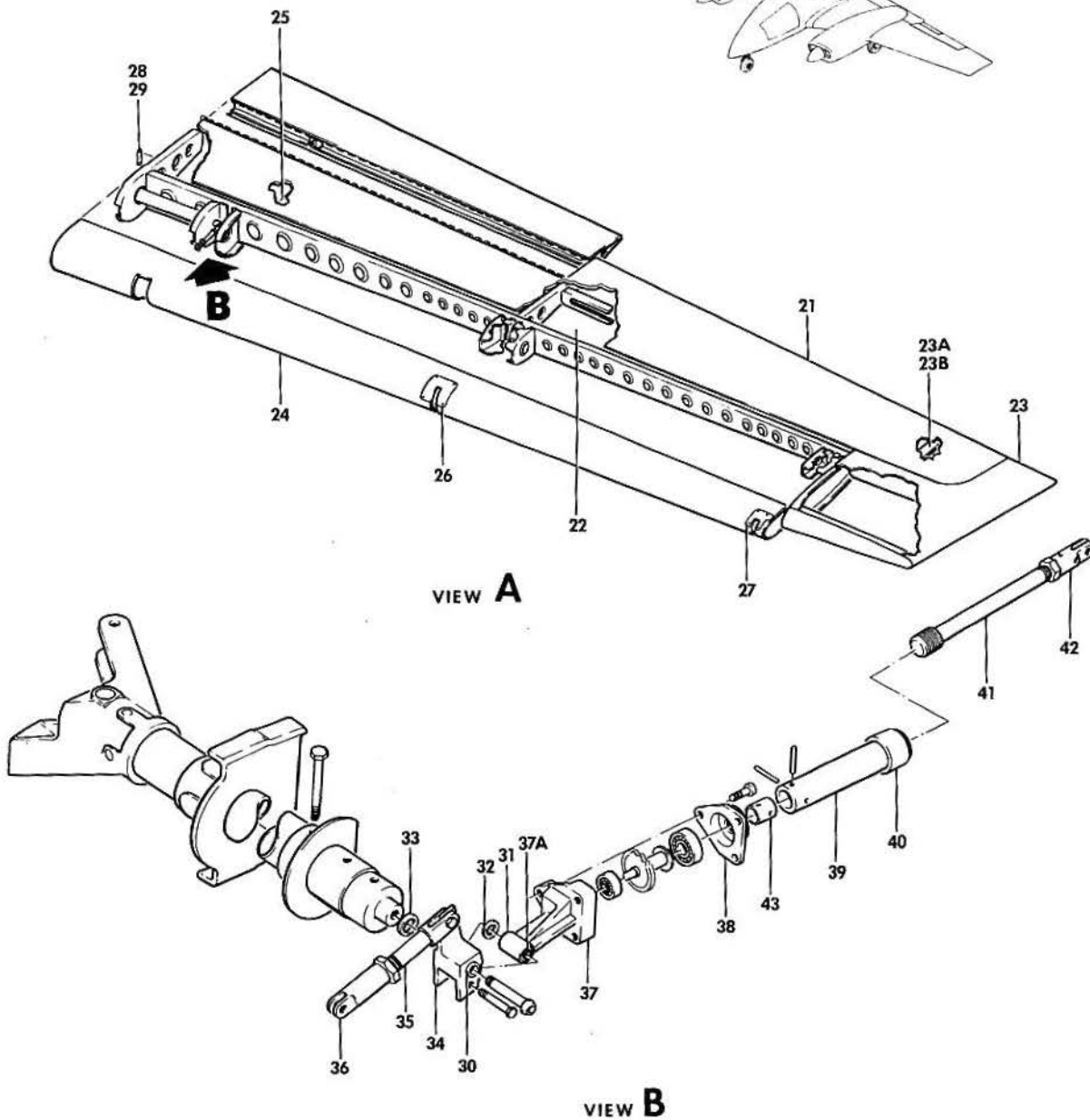
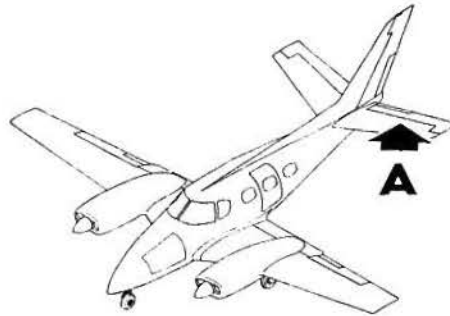


B60-133-4

B E E C H C R A F T
DUKE B60
I L L U S T R A T E D P A R T S C A T A L O G

GAMA/ATA CODE & INDEX NO.	PART NO.	1 2 3 4 5 6 7	DESCRIPTION	UNITS PER ASSY	USABLE ON CODE
20-01	60-610000-603		ELEVATOR ASSY,LH.	1	
	60-610000-604		ELEVATOR ASSY,RH.	1	
	60-610000-661		ELEVATOR ASSY,LH /LESS TAB/	1	
- 1	60-610013		. SPAR ASSY,LH & RH	1	
	60-610013-1		. . SPAR,LH & RH ELEVATOR	1	
	60-610013-3		. . ANGLE,UPPER SPAR CAP LH & RH.	1	
	60-610013-4		. . ANGLE,LOWER SPAR CAP LH & RH.	1	
	60-610025		. RIB ASSY,LH & RH COUNTERWEIGHT SUPPORT.	1	
- 2	60-610025-1		. . RIB,LH & RH COUNTERWEIGHT SUPPORT	1	
	AN366F428		. . NUTPLATE.	3	
- 3	60-610038		. RIB,LH & RH ELEVATOR SPAR TIP /STA 13.170/.	1	
- 4	60-610016		. RIB,LH ELEVATOR /STA 13.170/.	1	
	60-610037		. RIB,RH ELEVATOR /STA 13.170/.	1	
- 5	60-610018		. RIB,LH ELEVATOR /STA 21.205/.	1	
	60-610018-2		. RIB,RH ELEVATOR /STA 21.205/.	1	
- 6	60-610054-1		. RIB,LH ELEVATOR /STA 23.205/.	1	
	60-610019-5		. RIB ASSY,LH ELEVATOR /STA 51.910/	1	
	60-610019-6		. RIB ASSY,RH ELEVATOR /STA 51.910/	1	
- 7	60-610019-7		. . RIB,LH ELEVATOR	1	
	60-610019-8		. . RIB,RH ELEVATOR	1	
- 8	NAS697A08		. . NUTPLATE.	1	
	60-610020-1		. RIB ASSY,LH ELEVATOR /STA 53.709/	1	
	60-610020-2		. RIB ASSY,RH ELEVATOR /STA 53.709/	1	
- 9	60-610020-3		. . RIB,LH ELEVATOR	1	
	60-610020-4		. . RIB,RH ELEVATOR	1	
- 10	NAS696A06		. . NUT	1	
- 11	60-610021-3		. RIB,LH ELEVATOR /STA 88.550/.	1	
	60-610021-4		. RIB,RH ELEVATOR /STA 55.790/.	1	
	60-610024-1		. RIB ASSY,LH ELEVATOR /STA 91.135/	1	
	60-610024-2		. RIB ASSY,RH ELEVATOR /STA 91.135/	1	
- 12	60-610024-3		. . RIB,LH ELEVATOR	1	
	60-610024-4		. . RIB,RH ELEVATOR	1	
- 13	NAS696A06		. . NUTPLATE.	2	
	60-610022-5		. RIB ASSY,LH ELEVATOR /STA 87.890/	1	
	60-610022-6		. RIB ASSY,RH ELEVATOR /STA 87.890/	1	
- 14	60-610022-7		. . RIB,LH ELEVATOR	1	
	60-610022-8		. . RIB,RH ELEVATOR	1	
- 15	NAS697A8		. . NUTPLATE.	2	
- 16	60-610023-3		. RIB,ELEVATOR,LH ELEVATOR /STA 91.135/	1	
	60-610023-4		. RIB,RH ELEVATOR	1	
- 17	60-610026		. RIB,LH & RH ELEVATOR SPAR EXTENSION	1	
- 18	60-610031-1		. BRACKET,LH & RH ELEVATOR HINGE /STA 53.850/	2	
- 19	60-610032-1		. BRACKET,LH & RH ELEVATOR HINGE /STA 53.850/	2	
	60-610000-165		. WEIGHT ASSY,LH ELEVATOR	1	
	60-610000-177		. WEIGHT ASSY,RH ELEVATOR	1	
			/ATTACHING PARTS/		
	MS27039-4-20		. BOLT.	1	
	MS27039-4-24		. BOLT.	1	
	MS27039-4-30		. BOLT.	1	
	105740X-ZK0620		. BUSHING	1	
	105740X-ZK0910		. BUSHING	1	
	105740X-ZK1220		. BUSHING	1	
	AN960-416		. WASHER.	1	
	105090-063-4F		. WASHER.	2	
- 20	60-610000-145		. . WEIGHT,LH ELEVATOR.	1	
	60-610000-179		. . WEIGHT,RH ELEVATOR.	1	

BEECHCRAFT
DUKE B60
ILLUSTRATED PARTS CATALOG



860-1335

B E E C H C R A F T
DUKE B60
I L L U S T R A T E D P A R T S C A T A L O G

GAMA/ATA CODE & INDEX NO.	PART NO.	DESCRIPTION							UNITS PER ASSY	USABLE ON CODE
		1	2	3	4	5	6	7		
20-01	60-610000-147	. ANGLE,LH & RH ELEVATOR FWD INBOARD.							1	
	60-610000-157	. SHIM,LH & RH OUTBD SKIN TRAILING EDGE							1	
- 21	60-610000-9	. BONDED SKIN ASSY,LH ELEVATOR UPPER INBD							1	
	60-610000-5	. BONDED SKIN ASSY,RH ELEVATOR UPPER INBD							1	
- 22	60-610000-11	. BONDED SKIN ASSY,LH ELEVATOR LOWER INBD							1	
	60-610000-149	. BONDED SKIN ASSY,RH ELEVATOR LOWER INBD							1	
- 23	60-610000-15	. SKIN,LH & RH ELEVATOR OUTBOARD.							1	
- 23A	60-610000-173	. STIFFENER,LH AND RH ELEVATOR OUTBD.							1	
- 23B	60-610000-175	. STRIP,LH AND RH ELEVATOR OUTBD.							1	
- 24	60-610000-29	. SKIN,LH ELEVATOR LEADING EDGE							1	
	60-610000-30	. SKIN,RH ELEVATOR LEADING EDGE							1	
- 25	60-610000-17	. DOOR,LH ELEVATOR ACCESS /STA 21.205/.							1	
- 26	60-610000-41	. DOOR,LH & RH ELEVATOR ACCESS /STA 53.850/.							1	
- 27	60-610000-43	. DOOR,LH ELEVATOR OUTB ACCESS /STA 89.700/.							1	
- 28	60-610000-44	. DOOR,RH ELEVATOR OUTBD ACCESS /STA 89.700/.							1	
- 29	103637	. PLACARD,LH AND RH ELEVATOR /STA 13.170/.							1	
		/ATTACHING PARTS/								
	49384	. FASTENER,LH & RH ELEVATOR PLACARD							2	

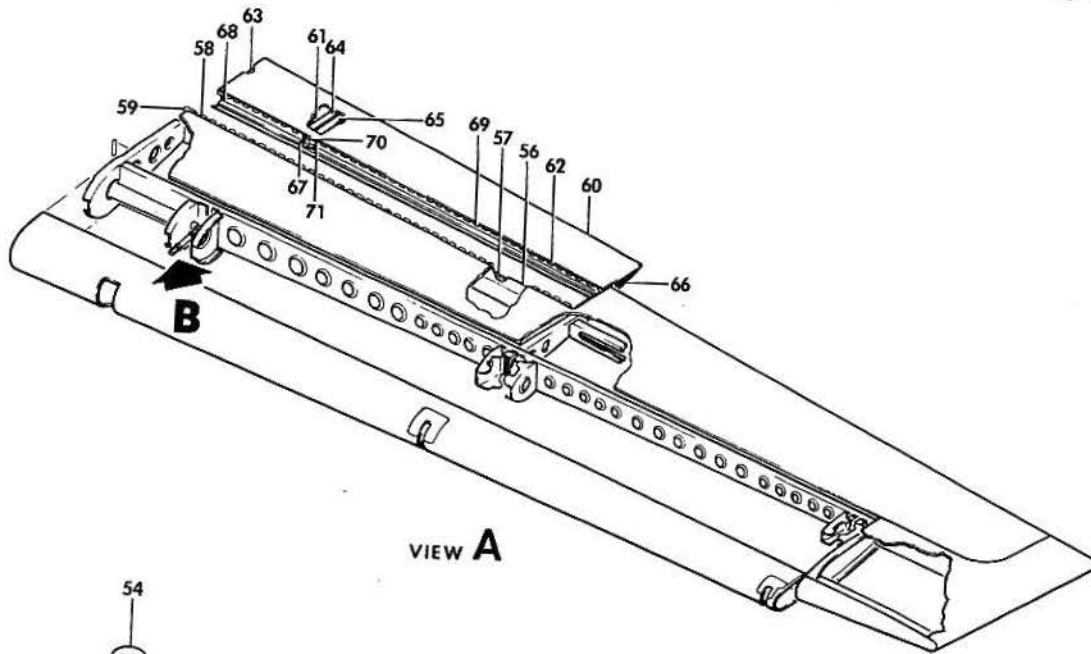
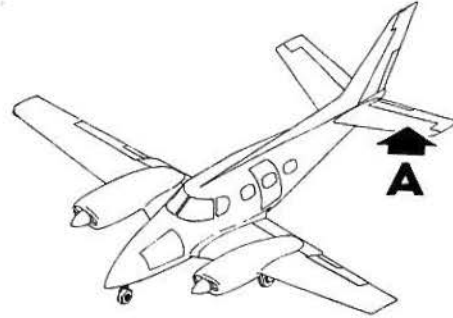
	60-610000-161	. COVER,LH RIB /STA 21.700/							1	
	60-610000-171	. DOUBLER,LH ELEVATOR SKIN /STA 21.700/							1	
- 30	60-610046	. BUSHING,ELEVATOR TAB ACTUATOR							1	
- 31	60-610042	. BUSHING,ELEVATOR TAB ACTUATOR							1	
- 32	60-610043	. WASHER,ELEVATOR TAB ACTUATOR.							1	
- 33	60-610044	. WASHER.							1	
- 34	60-610041-1	. LINK,ELEVATOR TAB ACTUATOR.							1	
		/ATTACHING PARTS/								
	MS200041116	. BOLT.							1	
	AN960-416	. WASHER.							1	
	AN960-416L	. WASHER.							AR	

- 35	60-610040	. CLEVIS,ELEVATOR TAB ACTUATOR.							1	
	AN316-6R	. NUT,LOCK.							1	
- 36	96-526000-3	. CLEVIS,ELEVATOR TAB ACTUATOR.							1	
		/ATTACHING PARTS/								
	AN173-5/M/	. BOLT,FWD.							1	
	AN174-6	. BOLT,AFT.							1	
	AN960-10	. WASHER,FWD.							1	
	AN960-416	. WASHER,AFT.							1	
	130909N15	. NUT,FWD							1	
	130909N16	. NUT,AFT							1	
	MS24665-134	. COTTER,PIN.							2	

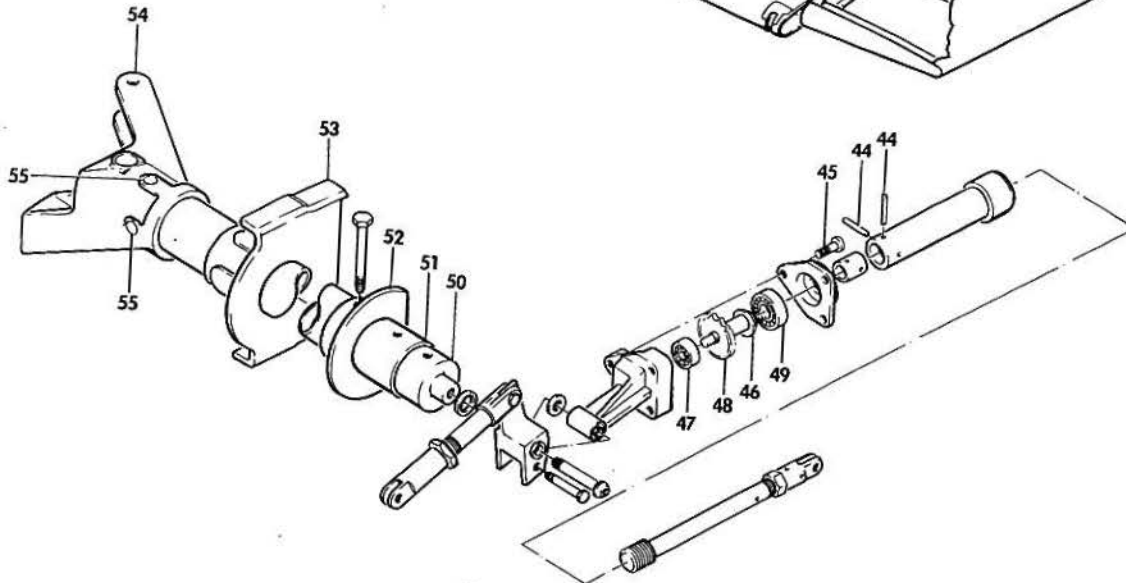
	60-526011-601	. ACTUATOR ASSY,ELEVATOR TAB.							1	
		/SEE CHAPTER 27-30-10/								
		/ATTACHING PARTS/								
	AN173-13/M/	. BOLT,FWD.							1	
	AN174-6	. BOLT,AFT.							1	
	AN960-10	. WASHER,FWD.							1	
	AN960-416	. WASHER,AFT.							1	
	130909N15	. NUT,FWD							1	
	130909N16	. NUT,AFT							1	
	MS24665-134	. COTTER,PIN.							1	

- 37	60-521012	. BEARING ASSY,TAB ACTUATOR HOUSING							1	
	60-521012-1	. HOUSING,BEARING							1	
- 37A	60-521012-3	. BEARING,ACTUATOR HOUSING.							1	
- 38	60-526000-11	. COVER,TAB ACTUATOR.							1	
- 39	60-526000-9	. BARREL,TAB ACTUATOR DRIVE							1	
- 40	60-526000-7	. COLLAR,ACTUATOR							1	
- 41	60-526011-5	. SCREW,ACTUATOR.							1	
	AN316-6R	. NUT,LOCK.							1	
- 42	60-526018	. CLEVIS.							1	
- 43	105740X-XL0562	. BUSHING,ACTUATOR.							1	

BEECHCRAFT
DUKE B60
ILLUSTRATED PARTS CATALOG



VIEW A



VIEW B

B60-133-6

B E E C H C R A F T
DUKE B60
I L L U S T R A T E D P A R T S C A T A L O G

GAMA/ATA CODE & INDEX NO.	PART NO.	DESCRIPTION	UNITS PER ASSY	USABLE ON CODE
		1 2 3 4 5 6 7		
20-01 - 44	MS9048-073	. . PIN,ACTUATOR.	2	
- 45	AN501A10-10	. . SCREW,ACTUATOR.	3	
- 46	60-526011-9	. . SHIM,ACTUATOR	1	
- 47	MS20201KP3A	. . BEARING,ACTUATOR.	1	
- 48	95-524022-5	. . SPROCKET,ACTUATOR	1	
- 49	MS20201K6A	. . BEARING,ACTUATOR.	1	
	60-524129-1	. . CABLE ASSY,ELEVATOR TRIM TAB.	1	
- 50	60-610039	. . CONNECTOR,ELEVATOR LH & RH.	1	
	60-610000-607	. . TUBE ASSY,LH ELEVATOR	1	
	60-610000-608	. . TUBE ASSY,RH ELEVATOR	1	
		/ATTACHING PARTS/		
	AN3-20/M/	. . BOLT.	1	
	AN960-10	. . WASHER.	1	
	130909N15	. . NUT	1	
	MS24665-134	. . PIN,COTTER.	1	

- 51	60-610000-163	. . TUBE,LH & RH ELEVATOR	1	
- 52	60-610012-1	. . SUPPORT	1	
- 53	60-610011-1	. . SUPPORT,LH & RH ELEVATOR INBOARD.	1	
- 54	60-524045-1	. . HORN,LH ELEVATOR.	1	
	60-524045-2	. . HORN,RH ELEVATOR.	1	
- 55	AN386-1-15	. . PIN,THREADED TAPER.	4	
	AN975-3	. . WASHER.	4	
	130909N15	. . NUT	4	
	MS24665-134	. . PIN,COTTER.	4	
	60-610014	. . SPAR ASSY,LH ELEVATOR TAB CLOSURE	1	
- 56	60-610014-1	. . SPAR,AFT.	1	
- 57	60-610014-3	. . ANGLE,SPAR.	1	
- 58	60-610047-23	. . HINGE HALF,ELEVATOR TAB	1	
	60-610047-601	. . TAB ASSY,LH ELEVATOR.	1	
		/ATTACHING PARTS/		
- 59	60-610047-27	. . PIN,TAB HINGE	1	

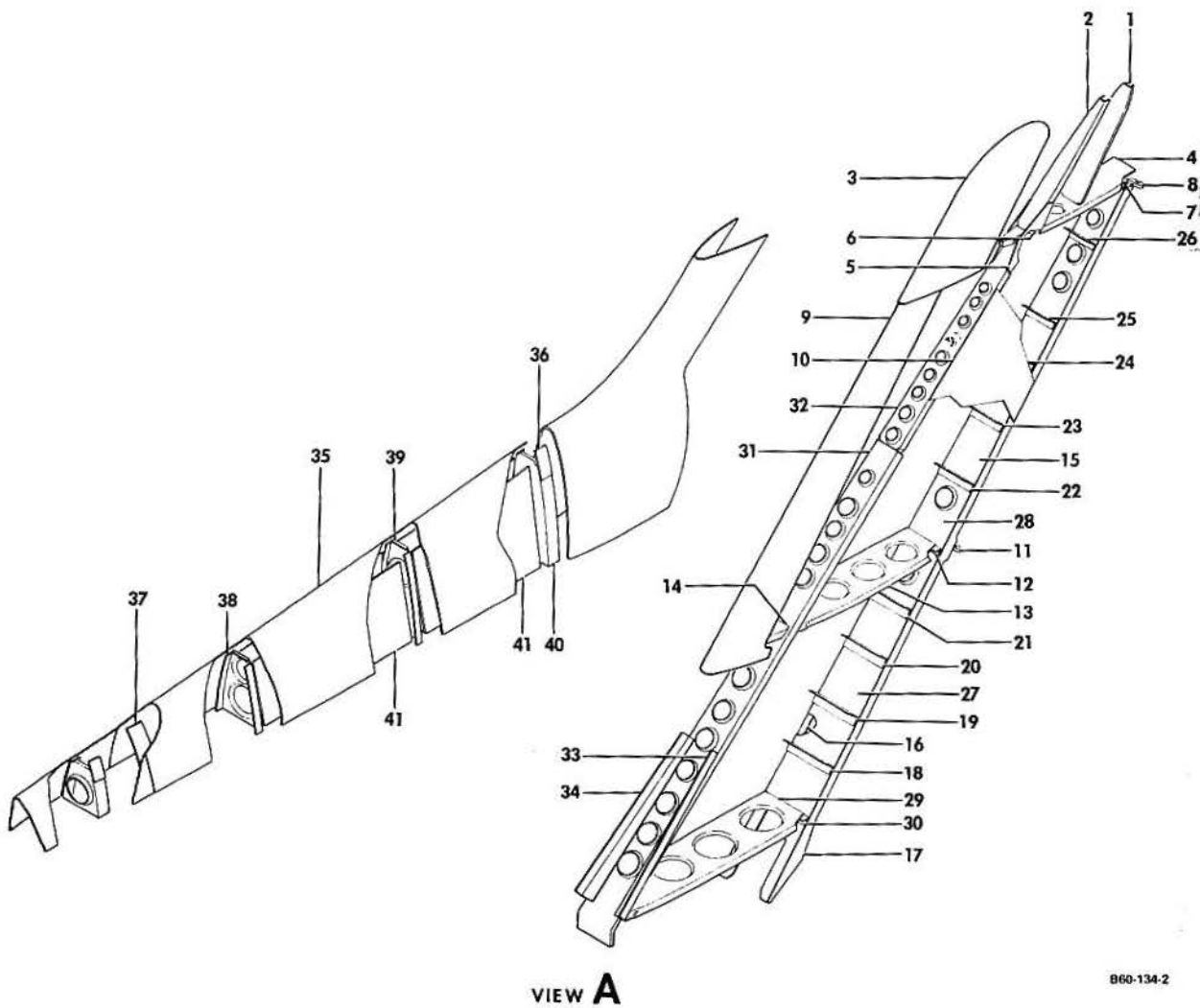
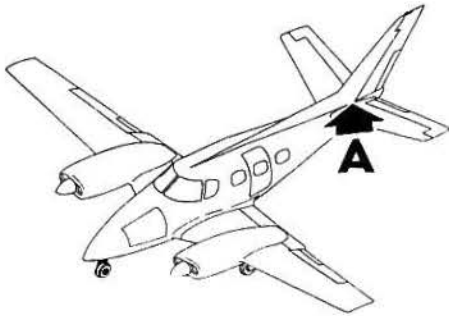
- 60	60-610047-1	. . SKIN ASSY,BONDED TAB /UPPER/.	1	
- 61	60-610047-2	. . SKIN ASSY,BONDED TAB /LOWER/.	1	
- 62	60-610047-29	. . SKIN,TAB LEADING EDGE	1	
- 63	60-610047-13	. . FORMER,TAB.	1	
- 64	60-610047-15	. . FORMER,TAB.	1	
- 65	60-610047-17	. . FORMER,TAB.	1	
- 66	60-610047-18	. . FORMER,TAB.	1	
- 67	60-610047-11	. . REINFORCEMENT,TAB	1	
- 68	60-610047-9	. . SPAR,TAB.	1	
- 69	60-610047-25	. . HINGE HALF,TAB.	1	
	60-610047-19	. . HORN ASSY,TAB	1	
- 70	60-610047-21	. . HORN,TAB.	1	
- 71	105740X-ZL0125	. . BUSHING	1	

END

BEECHCRAFT
DUKE B60
ILLUSTRATED PARTS CATALOG

55-30-01
VERTICAL STABILIZER AND DORSAL FIN

BEECHCRAFT
DUKE B60
ILLUSTRATED PARTS CATALOG

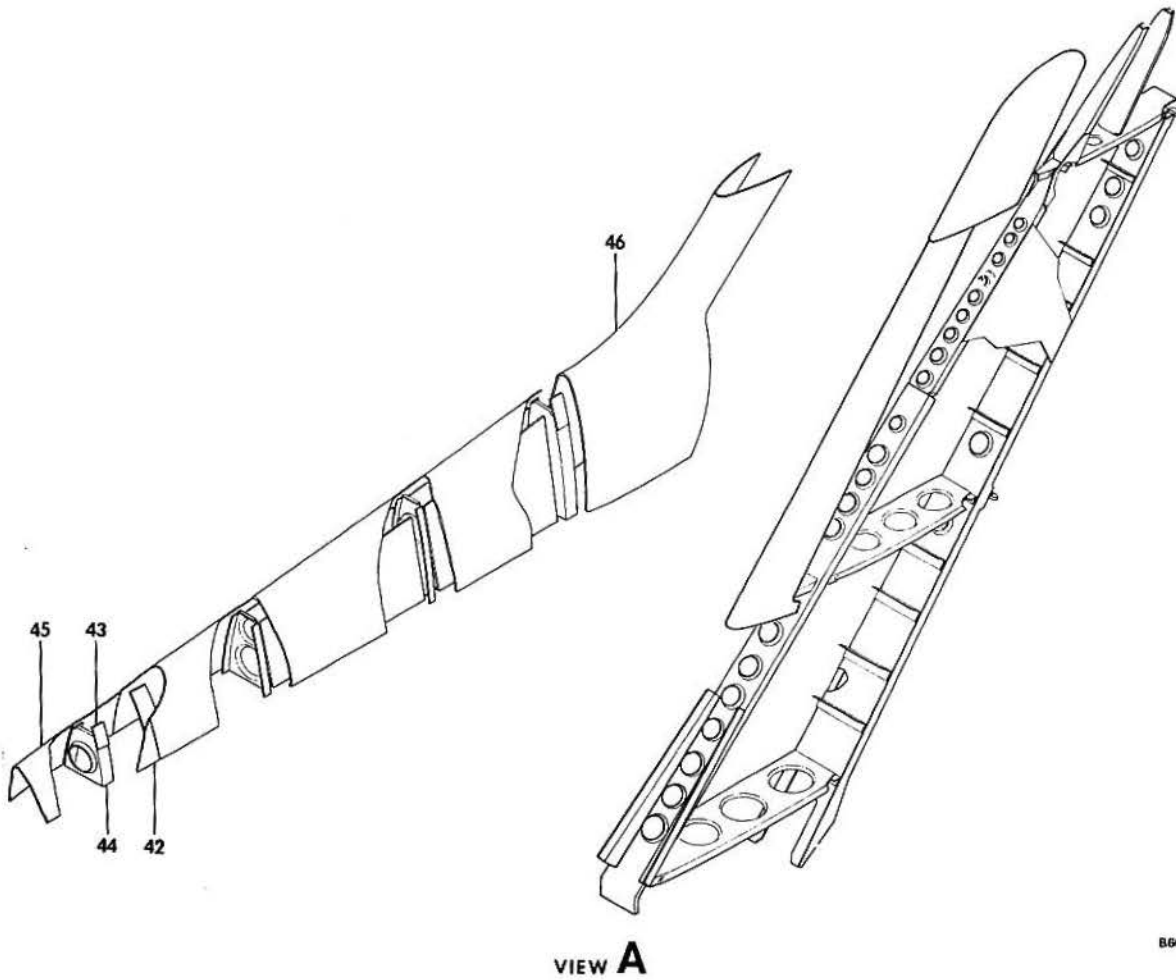
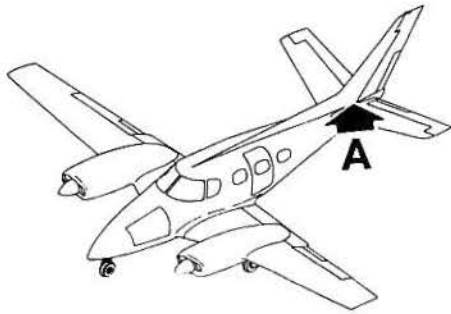


B60-134-2

B E E C H C R A F T
DUKE B60
I L L U S T R A T E D P A R T S C A T A L O G

GAMA/ATA CODE & INDEX NO.	PART NO.	DESCRIPTION							UNITS PER ASSY	USABLE ON CODE
		1	2	3	4	5	6	7		
30-01	60-640000	STABILIZER ASSY, VERTICAL.	1	
- 1	60-640023-1	. RIB TIP, FORWARD	1	
- 2	60-640022-1	. RIB, TIP FORWARD	1	
- 3	60-640020-1	. TIP, VERTICAL STABILIZER	1	
- 4	60-640017	. RIB, UPPER	1	
- 5	60-640000-11	. GUSSET.	2	
- 6	60-640000-17	. CLIP, FORWARD.	1	
- 7	60-640000-19	. CLIP, AFT.	1	
- 8	60-640019	. HINGE ASSY, UPPER.	1	
	60-640019-1	. . SUPPORT, LH.	1	
	60-640019-2	. . SUPPURT, RH.	1	
	60-640019-601	. . PLATE ASSY.	1	
	60-640019-3	. . . PLATE	1	
	R MS27261KSP4A	. . . BEARING	1	
- 9	60-640000-1	. SKIN, LEADING EDGE	1	
- 10	60-640000-27	. SKIN ASSY, LH.	1	
	60-640000-28	. SKIN ASSY, RH.	1	
- 11	60-640018	. HINGE ASSY, CENTER	1	
	60-640018-1	. . SUPPORT, LH.	1	
	60-640018-2	. . SUPPORT, RH.	1	
	60-640018-601	. . PLATE ASSY.	1	
	60-640018-3	. . . PLATE	1	
	R MS27261KSP4A	. . . BEARING	1	
- 12	60-640000-15	. CLIP.	1	
- 13	60-640016	. RIB, CENTER.	1	
- 14	60-640021	. RIB, LEADING EDGE.	1	
	60-640013	. SPAR ASSY, REAR.	1	
- 15	60-640013-1	. . WEB	1	
	60-640013-3	. . SUPPORT	1	
- 16	60-640013-5	. . SPAR, LH	1	
- 17	60-640013-6	. . SPAR, RH	1	
- 18	60-640013-9	. . ANGLE	1	
- 19	60-640013-11	. . ANGLE	1	
- 20	60-640013-13	. . ANGLE	1	
- 21	60-640013-15	. . ANGLE	1	
- 22	60-640013-17	. . ANGLE	1	
- 23	60-640013-19	. . ANGLE	1	
- 24	60-640013-21	. . ANGLE	1	
- 25	60-640013-23	. . ANGLE	1	
- 26	60-640013-25	. . ANGLE	1	
	60-640013-27	. . FILLER.	1	
- 27	60-640013-29	. . WEB	1	
- 28	60-640013-31	. . WEB	1	
	60-640013-33	. . BRACKET	1	
- 29	60-640015	. RIB, ROOT.	1	
- 30	60-640000-13	. CLIP.	1	
	60-640014	. SPAR ASSY, FRONT	1	
- 31	60-640014-1	. . SPAR, LH	1	
- 32	60-640014-3	. . SPAR, RH	1	
- 33	60-640014-5	. . ANGLE	1	
- 34	60-640014-6	. . ANGLE	1	
	60-640011-605	. FIN ASSY, AFT DORSAL	1	
- 35	60-640011-3	. FIN, AFT	1	
- 36	60-640011-9	. STRAP	1	
- 37	60-640011-13	. SPLICE.	1	
- 38	60-640028	. RIB	1	
- 39	60-640029	. RIB	1	
- 40	60-640030	. RIB ASSY.	1	
	60-640030-1	. . RIB	1	
- 41	60-340019-5	. ANTENNA ASSY.	1	

BEECHCRAFT
DUKE 860
ILLUSTRATED PARTS CATALOG



860-134-3

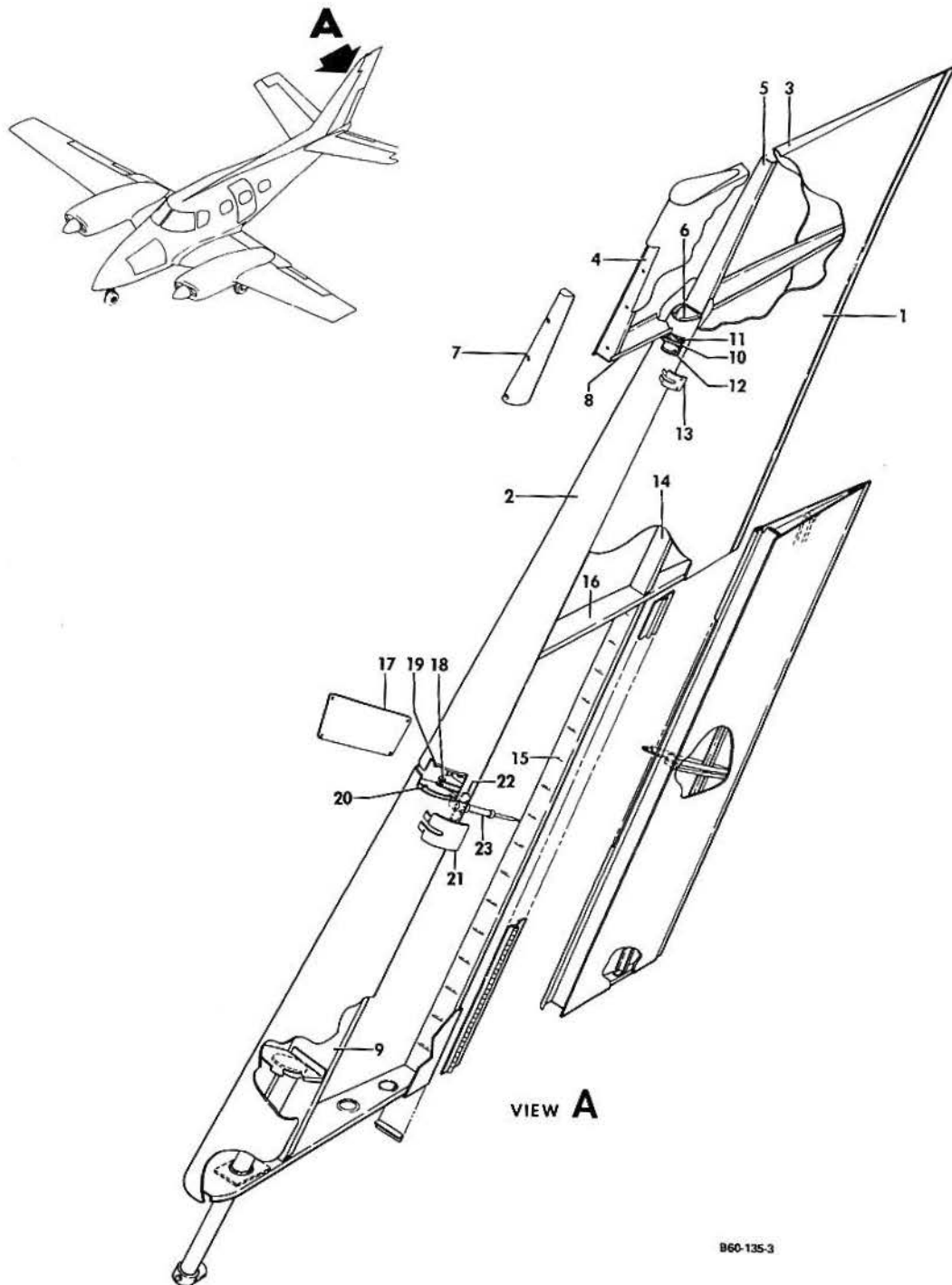
B E E C H C R A F T
DUKE 860
I L L U S T R A T E D P A R T S C A T A L O G

GAMA/ATA CODE & INDEX NO.	PART NO.	DESCRIPTION							UNITS PER ASSY	USABLE ON CODE	
		1	2	3	4	5	6	7			
30-01 - 42	60-640011	FIN,MIDDLE	1	
	60-640011-601	FIN ASSY,FWD DORSAL	1	
- 43	60-640011-5	. STRAP	1	
- 44	60-640027	. RIB	1	
- 45	60-640011-1	. FIN	1	
	60-600011	FAIRING INSTL,DORSAL SADDLE	NP	
- 46	60-600011-1	. FAIRING,DORSAL SADDLE	1	
		/ATTACHING PARTS/									
	AN525-832R8	. SCREW	62	
	NAS697A08	. NUTPLATE	1	

BEECHCRAFT
DUKE 860
ILLUSTRATED PARTS CATALOG

55-40-01
RUDDER AND TAB

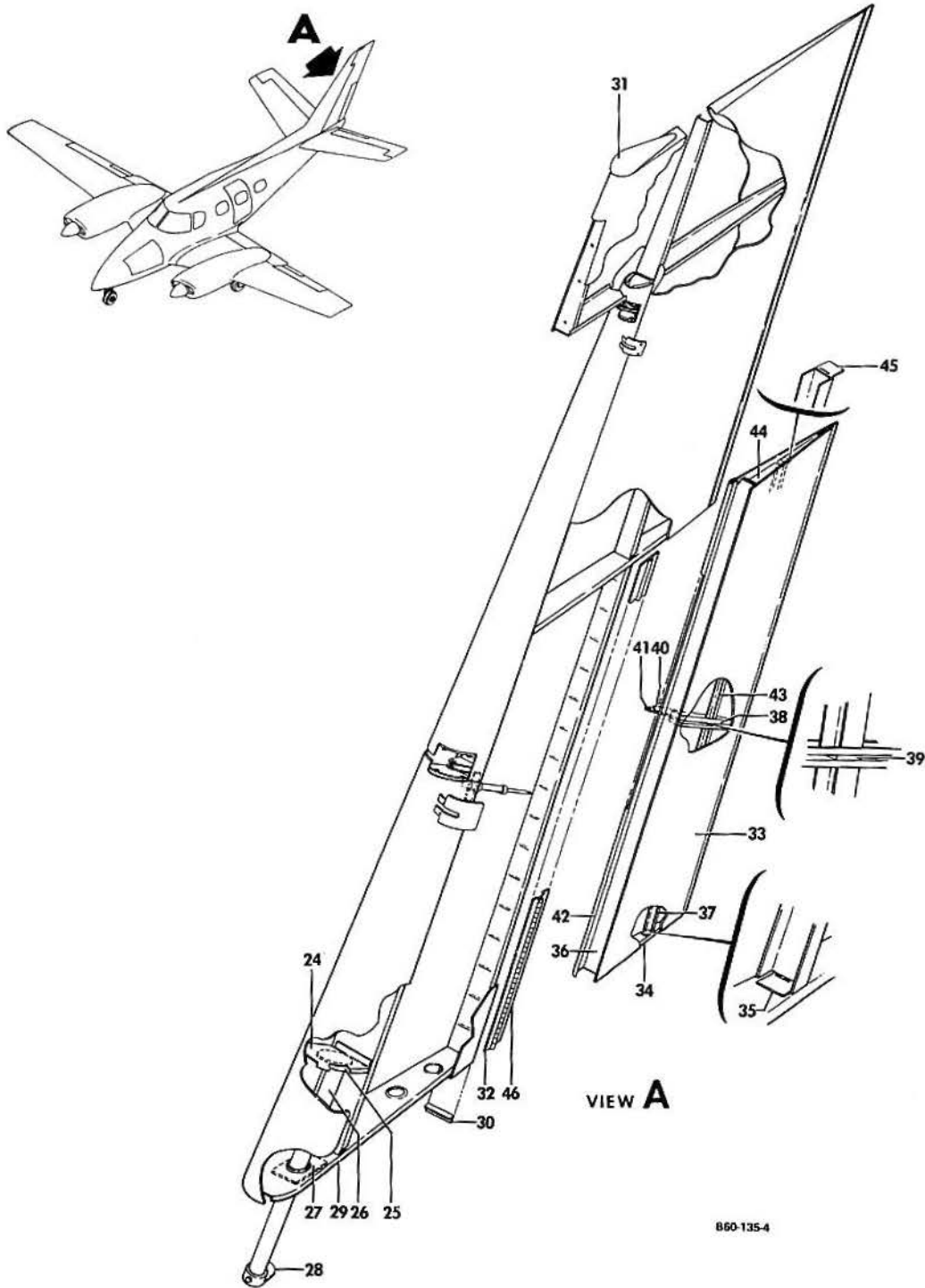
BEECHCRAFT
DUKE B60
ILLUSTRATED PARTS CATALOG



B E E C H C R A F T
DUKE B60
I L L U S T R A T E D P A R T S C A T A L O G

GAMA/ATA CODE & INDEX NO.	PART NO.	DESCRIPTION							UNITS PER ASSY	USABLE ON CODE	
		1	2	3	4	5	6	7			
40-01	60-630001-601	RUDDER ASSY								1	
- 1	60-630001-1	. SKIN ASSY,LH BONDED								1	
	60-630001-2	. SKIN ASSY,RH BONDED								1	
- 2	60-630001-3	. SKIN,LEADING EDGE								1	
- 3	60-630001-83	. SKIN ASSY,RUDDER TIP.								1	
	MK2000-3	. NUTPLATE /OSCILLATING BEACON ATTACHING/								5	
	60-630053-7	. RIB ASSY,RUDDER BALANCE WEIGHT.								1	
- 4	60-630035-9	. RIB								1	
	130006A1032D	. NUTPLATE.								3	
- 5	60-630042	. RIB,TIP								1	
- 6	60-630001-55	. ANGLE,LH.								1	
	60-630001-56	. ANGLE,RH.								1	
	60-630001-81	. WEIGHT ASSY,RUDDER BALANCE.								1	
		/ATTACHING PARTS/									
	MS27039-4-31	. SCREW,LOWER								1	
	MS27039-4-22	. SCREW,CENTER.								1	
	MS27039-4-17	. SCREW,UPPER								1	
	105090-063-4F	. WASHER,LOWER.								1	
	105090-063-4E	. WASHER,CENTER								1	
	105090-063-4D	. WASHER,UPPER.								1	
- 7	60-630001-69	. WEIGHT,BALANCE								1	
	105740X-ZJ1330	. SPACER,LOWER.								1	
	105740X-ZJ0890	. SPACER,CENTER								1	
	105740X-ZJ0610	. SPACER,UPPER.								1	
- 8	60-630036-5	. RIB,UPPER								1	
	60-630039	. SPAR ASSY,FRONT								1	
- 9	60-630039-1	. SPAR.								1	
	60-630039-3	. ANGLE,LH.								1	
	60-630039-5	. ANGLE,RH.								1	
- 10	60-630024	. HINGE,UPPER								2	
- 11	60-630021	. RIB ASSY,UPPER RUDDER HINGE UPPER								1	
- 12	60-630022	. RIB ASSY,UPPER RUDDER HINGE LOWER								1	
- 13	60-630001-19	. DOOR,UPPER RUDDER HINGE								1	
		/ATTACHING PARTS/									
	AN509-8R8	. SCREW								2	
	NAS1026A08	. NUTPLATE.								2	
- 14	60-630043	. RIB,REAR SPAR EXTENSION								1	
	60-630040	. SPAR ASSY,RUDDER REAR								1	
- 15	60-630040-1	. SPAR.								1	
	60-630040-3	. ANGLE								1	
- 16	60-630037	. RIB,CENTER.								1	
- 17	60-630001-87	. DOOR ASSY,RUDDER TAB ACTUATOR ACCESS.								1	
		/ATTACHING PARTS/									
	AN509-10-6	. SCREW								4	
	NAS1024A3	. NUTPLATE.								4	
	60-630001-13	. DOOR.								1	
	60-630001-89	. SHROUD.								1	
- 18	60-630025	. HINGE ASSY,RUDDER CENTER.								2	
- 19	60-630019	. RIB ASSY,CENTER RUDDER HINGE UPPER.								1	
- 20	60-630020	. RIB ASSY,CENTER RUDDER HINGE LOWER.								1	
- 21	60-630001-17	. DOOR,CENTER RUDDER HINGE.								1	
- 22	60-630044	. HINGE,RUDDER TAB ACTUATOR								1	
- 23	60-526013-601	. ACTUATOR ASSY,RUDDER TAB/SEE CHAPTER 27/.								1	
		/ATTACHING PARTS/									
	AN174-15/M/	. BOLT.								1	
	AN960-416L	. WASHER.								1	
	130909N16	. NUT								1	
	MS24665-134	. PIN,COTTER.								1	

BEECHCRAFT
DUKE B60
ILLUSTRATED PARTS CATALOG



B E E C H C R A F T
DUKE B60
I L L U S T R A T E D P A R T S C A T A L O G

GAMA/ATA CODE & INDEX NO.	PART NO.	DESCRIPTION							UNITS PER ASSY	USABLE ON CODE
		1	2	3	4	5	6	7		
40-01 - 24	60-630023	1	
	R 60-630011-109	1	
- 25	R 60-610012-1	1	
- 26	R 60-630001-107	NP	
- 27	R 60-630028	NP	
- 28	R 60-630034-1	NP	
	R AN386-1-14	4	
	R AN975-3	4	
	R 130909N15	4	
	R 60-600014-1	1	1
- 29	60-630038	1	
- 30	60-630001-21	1	
- 31	60-364000-49	1	
	60-360001-667	1	
- 32	60-630041-39	1	
	60-630041-601	1	
	60-630041-43	1	
- 33	60-630041-1	1	
	60-630041-3	1	
- 34	60-630041-25	1	
- 35	60-630041-45	1	
- 36	60-630041-33	1	
- 37	60-630041-35	1	
- 38	60-630041-27	2	
- 39	60-630041-55	1	
- 40	60-630041-57	1	
	60-630014-617	1	
- 41	60-630041-53	1	
	105740X-2L0125	1	
- 42	60-630041-59	1	
- 43	60-630041-47	1	
- 44	60-630041-29	1	
- 45	60-630041-49	1	
- 46	60-630041-41	1	

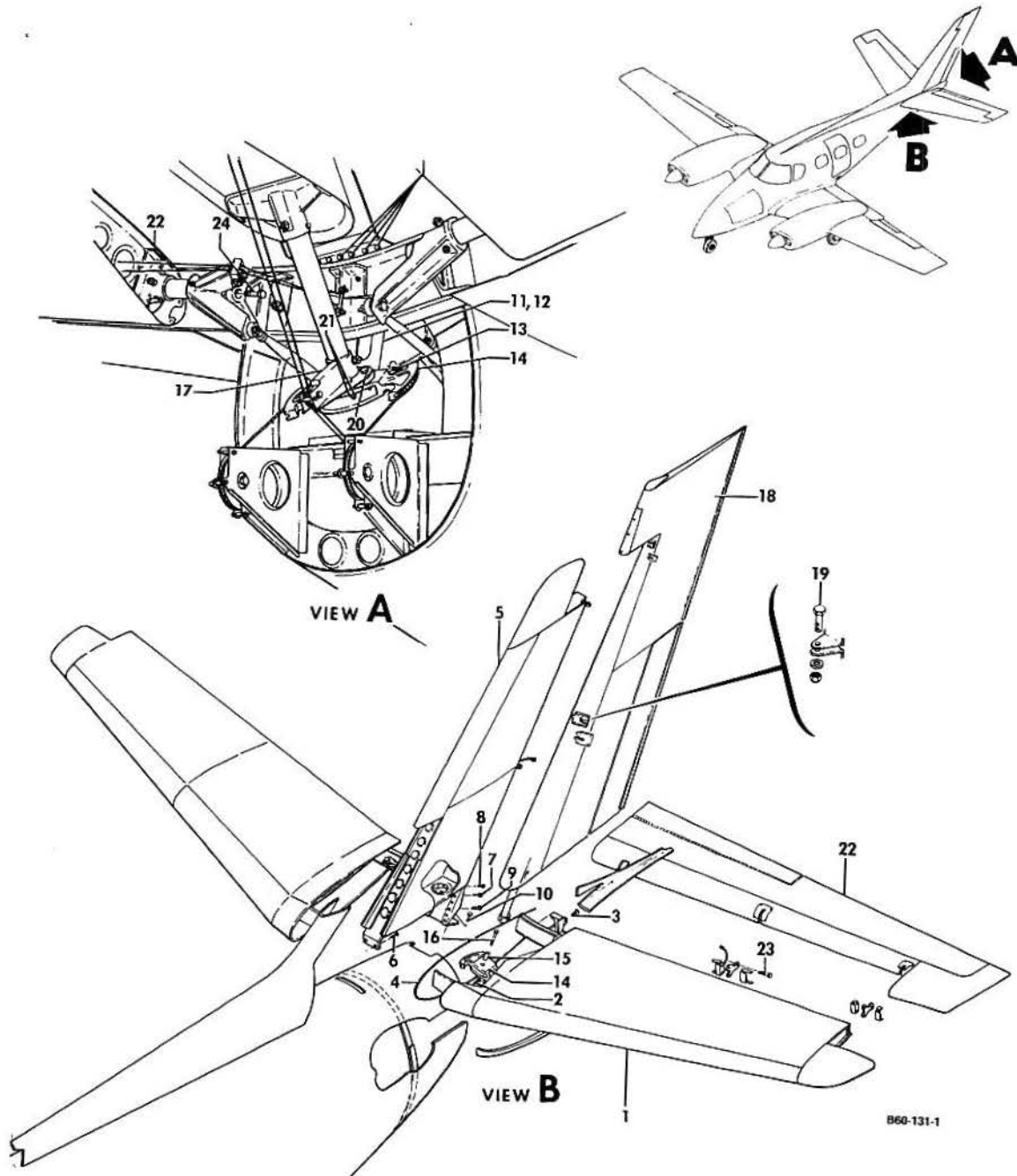
CODES OF EFFECTIVITY

1 P-247 THRU P-496

B E E C H C R A F T
DUKE B60
I L L U S T R A T E D P A R T S C A T A L O G

55-50-01
EMPENNAGE INSTALLATION

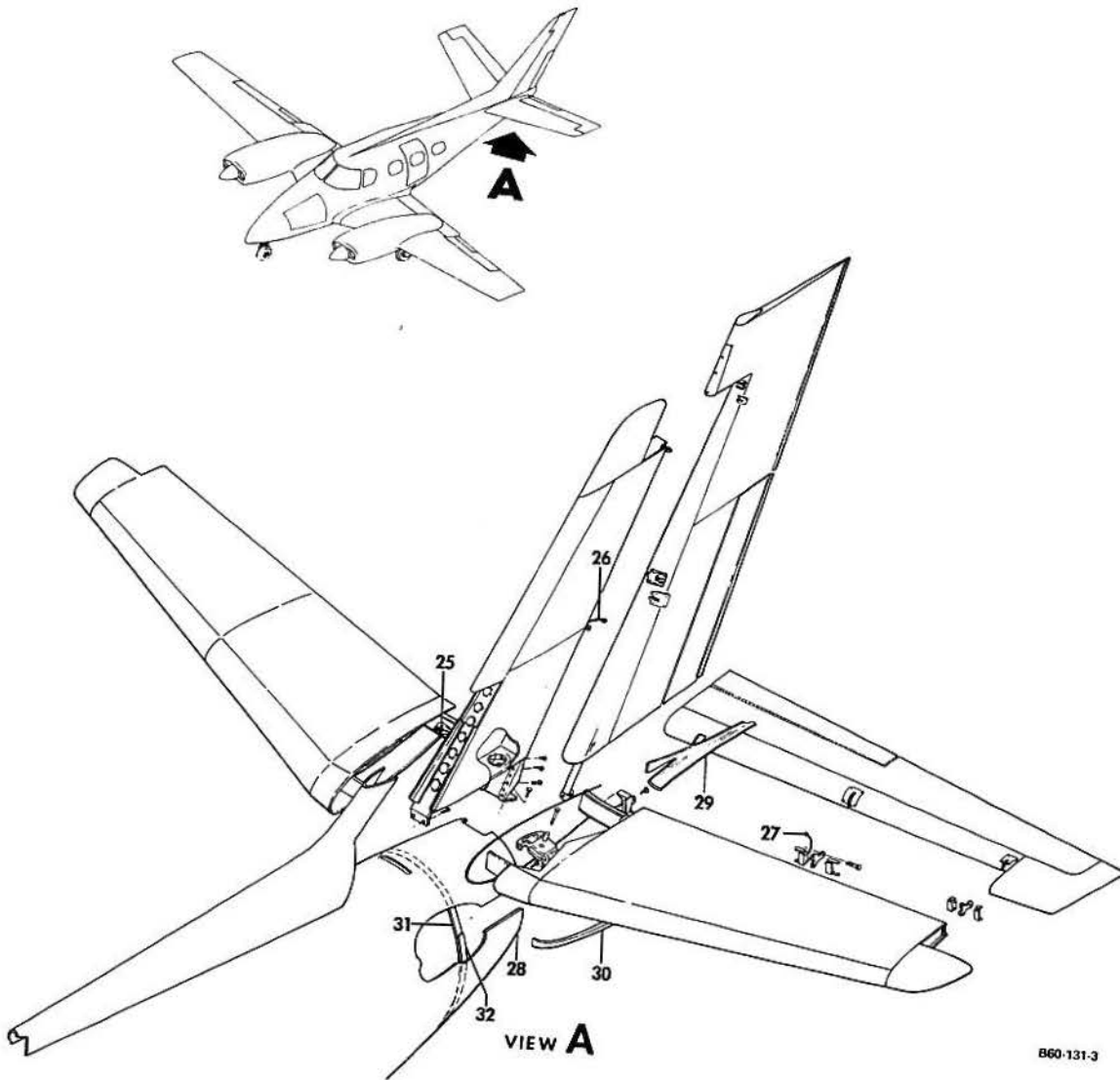
BEECHCRAFT
DUKE B60
ILLUSTRATED PARTS CATALOG



B E E C H C R A F T
DUKE B60
I L L U S T R A T E D P A R T S C A T A L O G

GAMA/ATA CODE & INDEX NO.	PART NO.	DESCRIPTION	UNITS PER ASSY	USABLE ON CODE
		1 2 3 4 5 6 7		
50-01	60-600000	EMPENNAGE INSTL	NP	
- 1	60-620000-601	• STABILIZER ASSY, HORIZONTAL /SEE 55-10-01/ /ATTACHING PARTS/	1	
- 2	AN176-6A	• BOLT.	2	
- 3	AN176-11A	• BOLT.	2	
	AN960-616	• WASHER.	4	
	130909N25	• NUT	4	
- 4	111749-01800	• EXTRUSION, HORIZONTAL STABILIZER	2	
- 5	60-640000	• STABILIZER ASSY, VERTICAL /SEE 55-30-01/ /ATTACHING PARTS/	1	
- 6	AN176-7A	• BOLT.	2	
	AN960-616	• WASHER.	2	
	130909N25	• NUT	2	
- 7	AN175-6A	• BOLT.	2	
	AN960-516	• WASHER.	2	
	MS20365-524	• NUT	2	
- 8	AN173-4A	• BOLT.	4	
	AN960-10	• WASHER.	4	
	MS21047-3	• NUTPLATE.	3	
	NAS680A3	• NUTPLATE.	4	
	60-640032	• SPACER.	AR	
	60-524040	• BRACKET ASSY, RUDDER BELLCRANK /ATTACHING PARTS/	1	
- 9	AN175-10A	• BOLT.	8	
	AN960-516	• WASHER.	8	
	MS20365-524	• NUT	8	
- 10	AN173-5A/M/	• BOLT.	5	
	AN960-10	• WASHER.	5	
	MS21042L3	• NUT	3	
	130909N29	• NUT	2	
- 11	60-524040-1	• BRACKET, RUDDER BELLCRANK.	1	
- 12	MS20200KP5	• BEARING	1	
- 13	105982-4A17-04	• BOLT.	2	
	AN316-4R	• NUT	2	
- 14	60-524172-1	• BELLCRANK, AFT RUDDER CONTROL. /ATTACHING PARTS/	1	
- 15	60-630047	• BUSHING, RUDDER HINGE.	1	
- 16	AN509-416R26	• SCREW	1	
	AN960-416	• WASHER.	1	
	130909N32	• NUT	1	
- 17	60-600014-1	• SPACER.	1	
- 18	60-524104	• BRACKET, RUDDER TAB PULLEY /STA 338.75/.	1	
- 18	60-630001-601	• RUDDER ASSY, /SEE CHAPTER 55-40-01/. /ATTACHING PARTS/	1	
- 19	AN174-6A	• BOLT, HINGE /UPPER & LOWER/.	2	
- 20	AN174-11A/M/	• BOLT.	2	
- 21	AN509-416R18	• SCREW	2	
	AN960-426	• WASHER.	6	
	130909N32	• NUT	6	
	60-600014-1	• SPACER.	1	
- 22	60-610000-603	• ELEVATOR ASSY, LH /SEE CHAPTER 55-20-01/	1	
	60-610000-661	• ELEVATOR ASSY, LH /LESS TAB/	1	
	60-610000-604	• ELEVATOR ASSY, RH /SEE CHAPTER 55-20-01/ /ATTACHING PARTS/	1	
- 23	AN174-6A	• BOLT, HINGE /CENTER & OUTBD HINGE/	2	
- 24	AN174-15A/M/	• BOLT.	1	
	AN960-416	• WASHER.	3	
	130909N32	• NUT	2	
	NAS577-4A	• NUT	1	

BEECHCRAFT
DUKE B60
ILLUSTRATED PARTS CATALOG



B60-131-3

B E E C H C R A F T
DUKE B60
I L L U S T R A T E D P A R T S C A T A L O G

GAMA/ATA CODE & INDEX NO.	PART NO.	DESCRIPTION							UNITS PER ASSY	USABLE ON CODE
		1	2	3	4	5	6	7		
50-01	60-524098	NP	
	NAS427K14	2	
- 25	60-524098-7	1	
		/ATTACHING PARTS/								
	130909815	2	
	AN960-10	2	
	NAS698A3	2	

- 26	MS25083-1BB6	2	
- 27	MS25083-BB5	4	
		/ATTACHING PARTS/								
	AN515-8R10	1	
	MS35206-244	1	
	AN960D8L	5	
	NAS679A08	1	
	NAS697A08	1	

- 28	60-620025	NP	
- 29	60-620025-13	1	
	60-620025-3	1	
	60-620025-4	1	
- 30	60-620025-15	1	
	60-620025-16	1	
- 31	60-620025-17	1	
- 32	60-620025-19	1	
	60-620025-20	1	
	MS24694S5	AR	
	AN960-8L	AR	
	130909N28	AR	

