

B E E C H C R A F T
DUKE B60
I L L U S T R A T E D P A R T S C A T A L O G

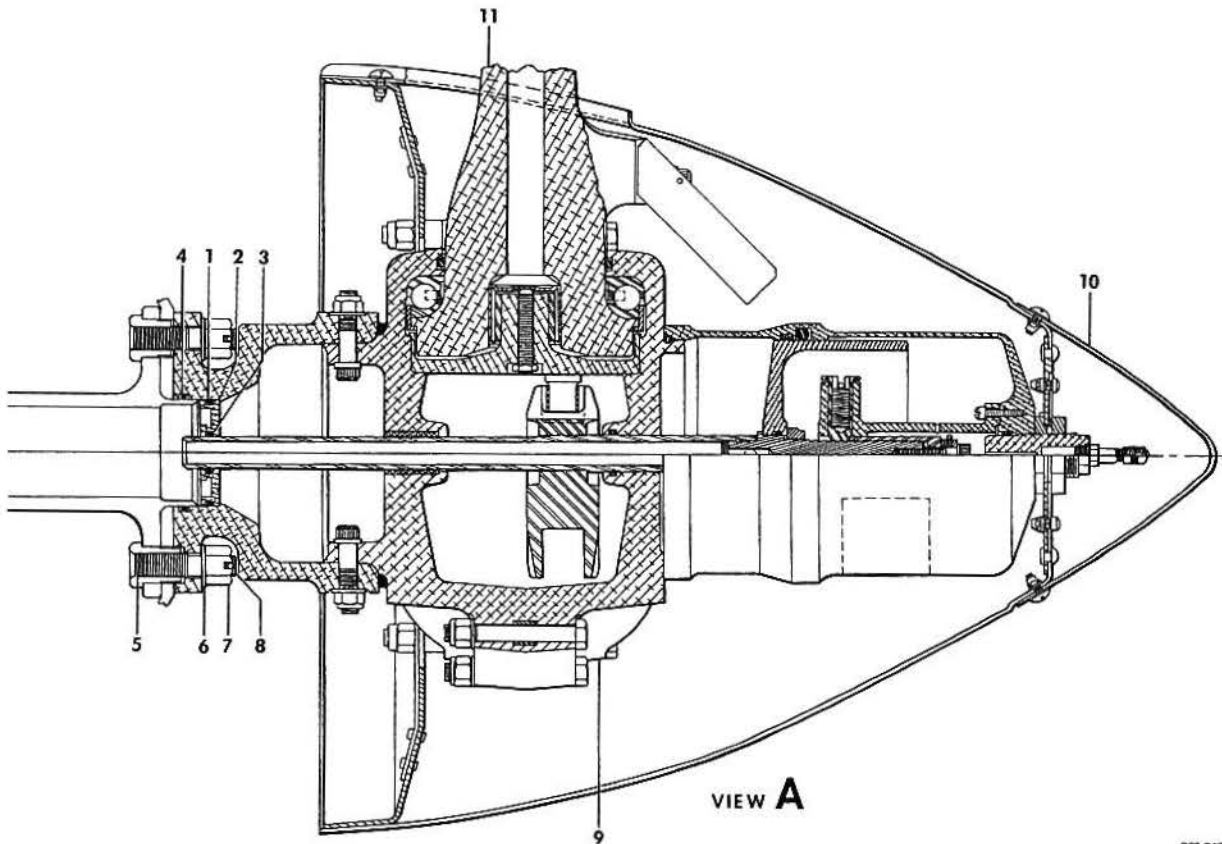
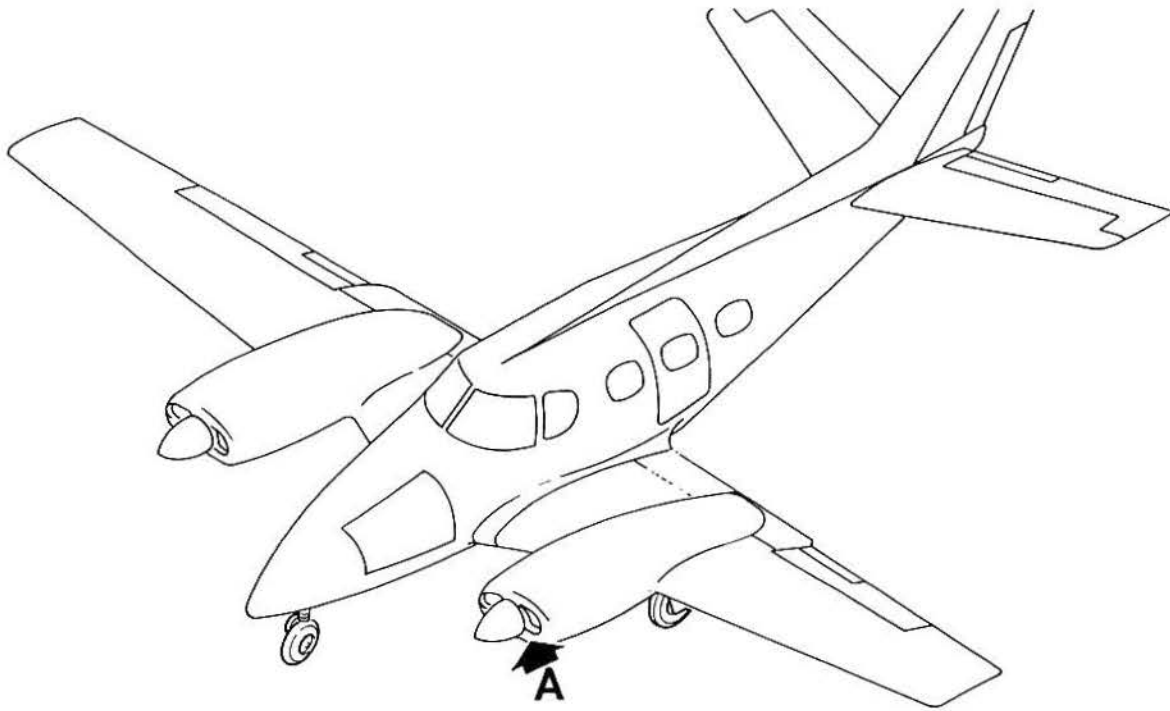
LIST OF PAGES & TABLE OF CONTENTS
FOR
CHAPTER 61-00-00 PROPELLERS

CHAP/SUB- SECT & UNIT	PAGE NO.	EFFECTIVE DATE	TABLE OF CONTENTS
61-00-00	1	04/19/84. LIST OF PAGES & TABLE OF CONTENTS
61-10-01	1	03/20/81. PROPELLER ASSEMBLY.
61-10-01	2	03/20/81	
61-10-01	3	01/08/82	
61-20-01	1	03/20/81. PROPELLER SYNCHRONIZER.
61-20-01	2	03/20/81	
61-20-01	3	04/19/84	
61-20-10	1	03/20/81. PROPELLER GOVERNOR.
61-20-10	2	03/20/81	P-247 THRU P-555
61-20-10	3	03/20/81	
61-20-10	4	03/20/81	
61-20-10	5	03/20/81	
61-20-12	1	03/20/81. PROPELLER GOVERNOR.
61-20-12	2	03/20/81	P-556 AND AFTER
61-20-12	3	03/20/81	
61-20-12	4	03/20/81	
61-20-12	5	03/20/81	
61-20-20	1	03/20/81. GOVERNOR ACCUMULATOR.
61-20-20	2	03/20/81	
61-20-20	3	03/20/81	

B E E C H C R A F T
DUKE 860
I L L U S T R A T E D P A R T S C A T A L O G

61-10-01
PROPELLER ASSEMBLY

BEECHCRAFT
DUKE B60
ILLUSTRATED PARTS CATALOG



B60 243-1

B E E C H C R A F T
DUKE B60
I L L U S T R A T E D P A R T S C A T A L O G

GAMA/ATA CODE & INDEX NO.	PART NO.	DESCRIPTION							UNITS PER ASSY	USABLE ON CODE
		1	2	3	4	5	6	7		
10-01	60-960000-7	PROPELLER INSTALLATION.							NP	1
	60-960000-9	PROPELLER INSTALLATION/WITH DEICER/							NP	1
	60-960000-17	PROPELLER INSTALLATION/WITH DEICER/							NP	2
	R 60-960000-19	PROPELLER INSTALLATION/WITH DEICER/							NP	6
	HCF3YR2FFFC74792R	. PROPELLER ASSY.							1	3
	HCF3YR2UFFC747 * 92R	. PROPELLER ASSY.							1	4
	HCF3YR2FFFC7479 * B2R	. PROPELLER ASSY/WITH DEICER/							1	3
	HCF3YR2UFFC747 * 9B2R	. PROPELLER ASSY/WITH DEICER/							1	5

NOTE HCF3YR2UFFC74792R CAN BE USED AS SPARES
FOR HCF3YR2FFFC74792R & HCF3YR2UFFC7479B2R
CAN BE USED AS SPARES FOR HCF3YR2FFFC747-
9B2R IF PROPELLER ASSEMBLIES ARE CHANGED
ON BOTH ENGINES AT THE SAME TIME.

	HCF3YR2UFFC747*	9K2R. PROPELLER ASSY/WITH DEICER/	1	6
		/ATTACHING PARTS/		
- 1	PRP909-4	. O RING,HUB.	1	
- 2	A2481	. SHAFT PLUG.	1	
- 3	PRP902-13	. O RING,ROD.	1	
- 4	PRP909-6	. O RING,HUB TO CRANKSHAFT.	1	
- 5	A2067	. STUD.	6	
- 6	AN960-816	. WASHER.	6	
- 7	A2069	. NUT	6	
- 8	31S094-0750	. ROLLED PIN.	6	

NOTE SEE CHAPTER 30-60-01 FOR PROPELLER ASSEM-
BLY DEICER INSTALLATION.

- 9	C3266-1	. . HUB UNIT.	1	
- 10	C3273	. . SPINNER ASSY.	1	
	C3267	. . BULKHEAD.	1	
	C3274	. . DOME.	1	
	C3275	. . CAP	1	
- 11	FC74792R	. . BLADE ASSEMBLY.	3	
	FC7479B2R	. . BLADE ASSEMBLY,BOOTED	3	

NOTE SEE HARTZELL PROPELLER MANUALS NO.117A
OVERHAUL INSTRUCTION OR NO.115A OWNERS
MANUAL FOR PARTS BREAKDOWN OF ABOVE
LISTED ASSEMBLIES

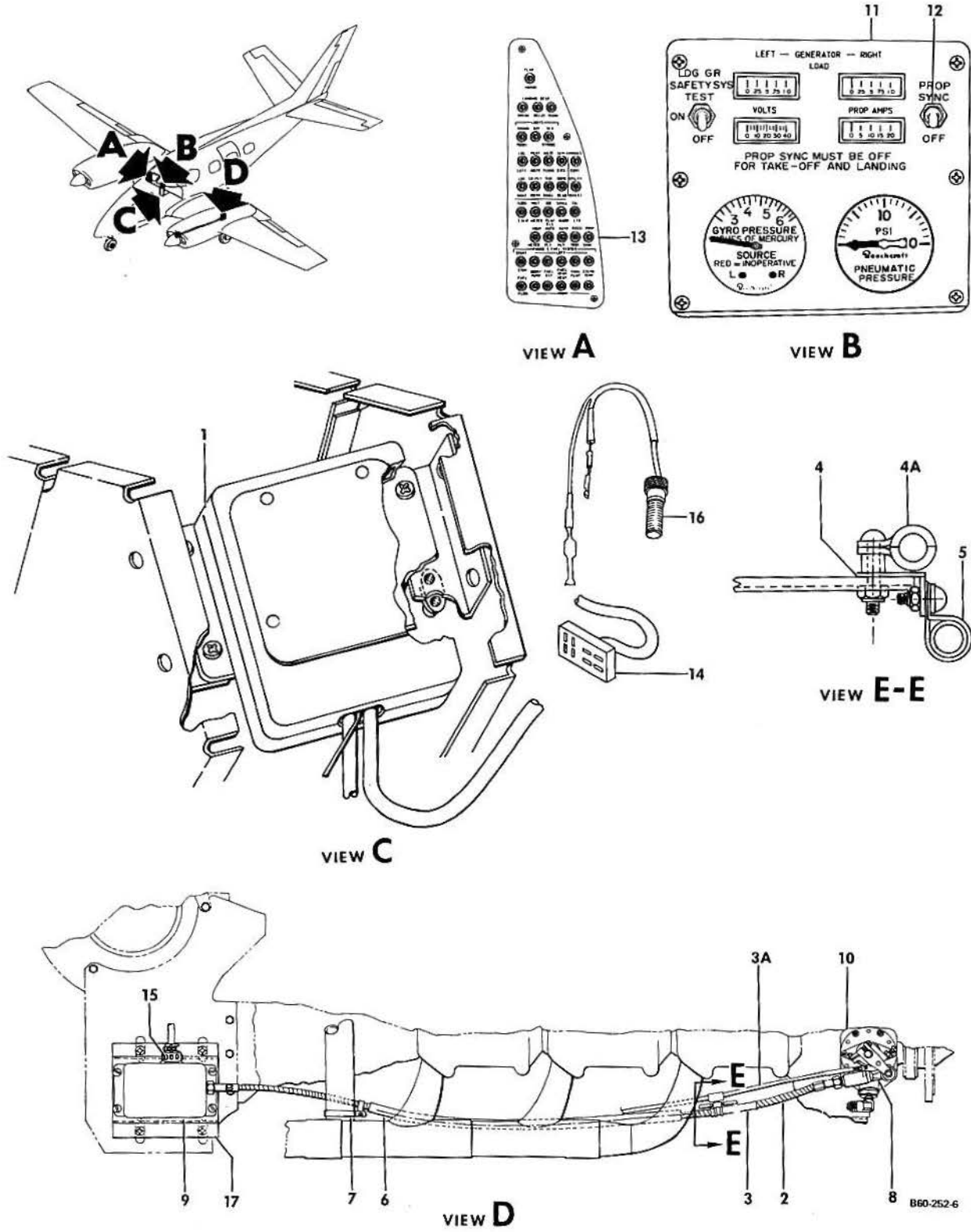
CODES OF EFFECTIVITY

1	P-247 THRU P-309	2	P-310 THRU P-578
3	P-247 THRU P-384, P-387,P-402	4	P-385,P-386,P-388 THRU P-401,P-403 AND AFTER
5	P-385,P-386, P-388 THRU P-401 P-403 THRU P-578	6	P-579 AND AFTER

B E E C H C R A F T
DUKE B60
I L L U S T R A T E D P A R T S C A T A L O G

61-20-01
PROPELLER SYNCHRONIZER

BEECHCRAFT
DUKE B60
ILLUSTRATED PARTS CATALOG



B E E C H C R A F T
DUKE B60
I L L U S T R A T E D P A R T S C A T A L O G

SUB-SECT UNIT & ITEM NO.	PART NO.	1	2	3	4	5	6	7	DESCRIPTION	UNITS PER ASSY	USABLE ON CODE
20-01	60-960011								SYNCHRONIZER INSTALLATION, PROPELLER	NP	
	213556								. KIT, PROPELLER SYCHRONIZER	1	
- 1	R 213460								. . BOX ASSEMBLY, CONTROL.	1	
									/ATTACHING PARTS/		
	AN515-8R5								. . SCREW	4	
	AN960-8								. . WASHER.	4	
									-----*		
- 2	1551-005								. . SHAFT ASSY, SYCH CTR FLEX.	1	
- 3	4354-050								. . GUIDE TUBE ASSY	1	
- 3A	40851-63								. . CONTROL CABLE L.H, PROP GOVERNOR	1	
	40851-65								. . CONTROL CABLE R.H, PROP GOVERNOR	1	
- 4	60-960011-3								. . STAND OFF	1	
	100696X-ZG008								. . BUSHING	1	
- 4A	PP561-DS4								. . CLAMP	1	
- 5	MS21919-8								. . CLAMP	1	
- 6	60-960011-5								. . HEAT SHIELD	1	
- 7	R AN742D24								. . CLAMP	1	
	AN735D5								. . CLAMP	1	
									/ATTACHING PARTS/		
	MS35207-263								. . SCREW	3	
	MS35207-264								. . SCREW	3	
	AN960-10								. . WASHER.	3	
	130909N29								. . NUT	3	
									-----*		
- 8	213446								. . ROD END	2	
	18655								. . WASHER.	2	
- 9	213100								. . ACTUATOR ASSY.	1	
- 10	60-389000-7								. . GOVERNOR ASSY/SEE CHAPTER 61-20-10/	2	
	60-324103								. . CENTER SUB PANEL, EDGE LIGHTED	1	
- 11	60-324101-3								. . CIRCUIT BREAKER ASSY.	1	1
	60-324101-5								. . CIRCUIT BREAKER ASSY.	1	2
	35-380052								. . KNOB.	1	
- 12	35-380053-15								. . SWITCH, SYNCHRONIZER	1	
	60-324132-3								. . UPPER RIGHT PANEL, EDGE LIGHTED CONSOLE.	1	1
	60-324132-5								. . UPPER RIGHT PANEL, EDGE LIGHTED CONSOLE.	1	2
- 13	D7274-2-2								. . CIRCUIT BREAKER	1	
- 14	233032								. . PLUG, JONES.	1	
- 15	233062								. . PLUG.	1	
	203233								. . CLAMP	1	
- 16	213127								. . PICKUP ASSY, MAGNETIC.	2	
	1609-201								. . TUBING, INSULATING	4	
- 17	60-960013								. . BRACKET, ACTUATOR ASSY	1	1
									/ATTACHING PARTS/		
	MS27039-1-14								. . SCREW	3	
	AN970-3								. . WASHER.	3	
	105739A-XB0375								. . SPACER.	3	
	130909N29								. . NUT	3	
									-----*		
	60-960013-11								. . BRACKET, ACTUATOR ASSY	1	2
									/ATTACHING PARTS/		
	MS27039-1-14								. . SCREW	4	
	AN970-3								. . WASHER.	4	
	105739A-ZT-0375								. . SPACER.	4	
	130909N29								. . NUT	4	
									-----*		

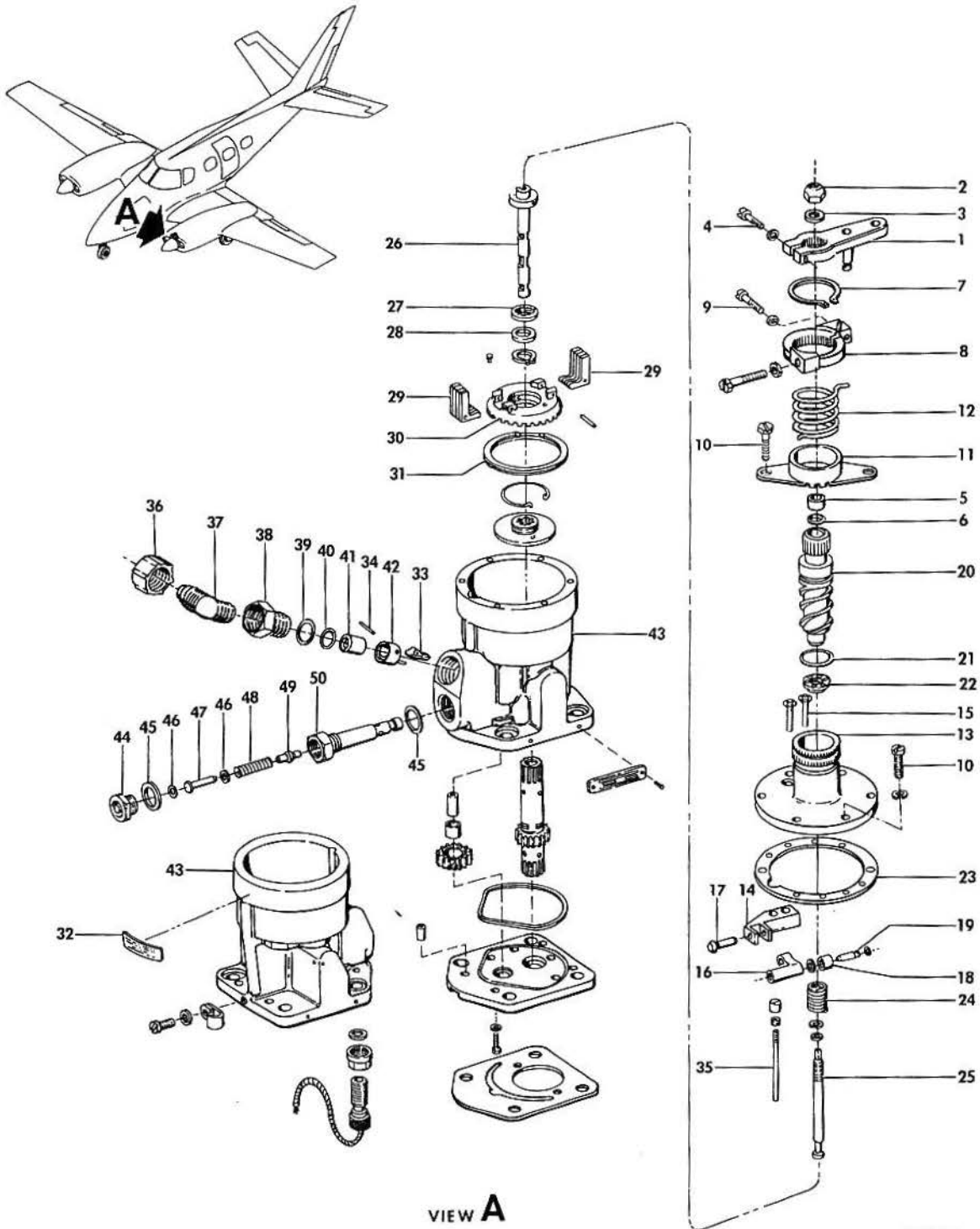
CODES OF EFFECTIVITY

1 P-247 THRU P-347, 2 P-348, P-365 AND
P-349 THRU P-364 AFTER

B E E C H C R A F T
DUKE B60
I L L U S T R A T E D P A R T S C A T A L O G

61-20-10
PROPELLER GOVERNOR
P-247 THRU P-555

BEECHCRAFT
DUKE B60
ILLUSTRATED PARTS CATALOG

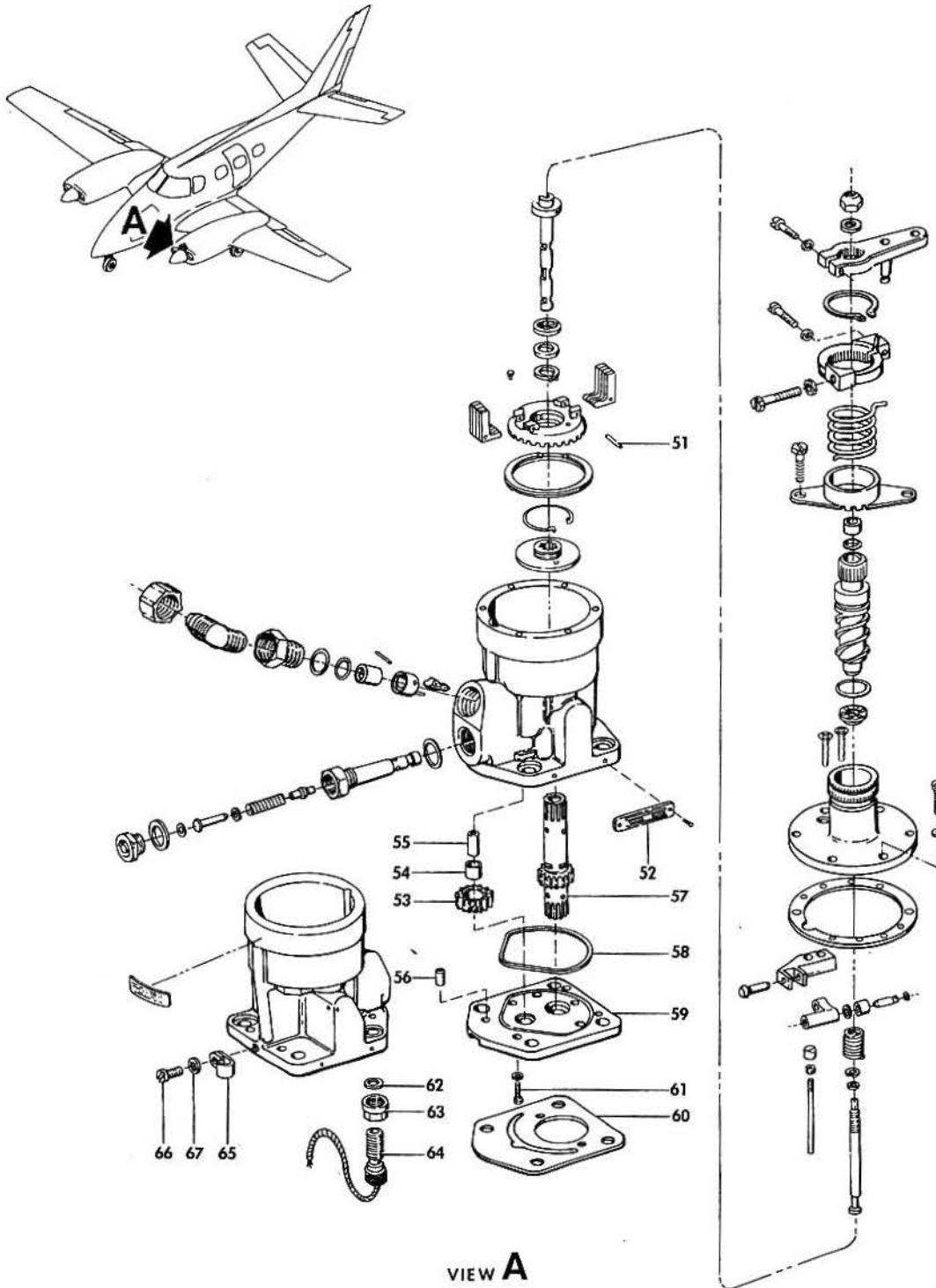


B60-254-2

B E E C H C R A F T
DUKE B60
I L L U S T R A T E D P A R T S C A T A L O G

GAMA/ATA CODE & INDEX NO.	PART NU.	DESCRIPTION	UNITS PER ASSY	USABLE ON CODE
		1 2 3 4 5 6 7		
20-10	60-389000	GOVERNOR ASSY,PROPELLER	NP	1
	60-389000-3	GOVERNOR ASSY,PROPELLER/WITH SYNCHRONIZER/.	NP	1
		ORDER 60-389000-5 OR -7 ASSY FOR SPARES. SEE CHAPTER 61-20-12,BOTH GOVERNORS ON ONE AIRPLANE MUST BE THE SAME PART NUMBER		
- 1	210039	. LEVER ASSY,SPEED ADJUSTING.	1	1
- 2	189522	. NUT	1	1
- 3	186283	. WASHER.	1	1
- 4	188434	. SCREW	1	1
	AN935-10	. WASHER.	1	1
- 5	210034	. BUSHING,LIFT ROD.	1	1
- 6	182194	. O RING.	1	1
- 7	189880	. RING,RETAINING.	1	1
- 8	4304-032	. RING,STOP	1	1
- 9	219375	. SCREW,STOP	1	1
	188302	. NUT	1	1
	190189	. SCREW,STOP.	1	1
- 10	AN503-8-12	. SCREW	6	1
- 11	210035	. RETAINER,SPRING	1	1
- 12	3013-516	. SPRING,CONTROL LEVER.	1	1
- 13	4060-513	. COVER ASSY,GOVERNOR	1	1
- 14	210322	. . BLOCK	1	1
- 15	189529	. . SCREW	2	1
- 16	210236	. . LEVER,BALLCHECK OPERATING	1	1
- 17	210252	. . PIN	1	1
- 18	210242	. . ROLLER.	1	1
- 19	210244	. . PIN	1	1
- 20	3026-821	. SHAFT AND WORM ASSY	1	1
- 21	182684	. O RING.	1	1
- 22	210358	. SEAT,UPPER SPRING	1	1
- 23	206595	. GASKET,COVER ASSY	1	1
- 24	182749	. SPRING,SPEEDER.	1	1
- 25	210044	. ROD,PILOT VALVE LIFT.	1	1
- 26	210331	. VALVE AND PLUNGER ASSY,PILOT.	1	1
- 27	180231	. BEARING,PILOT VALVE	1	1
- 28	210216	. RACE,BEARING LOWER.	1	1
- 29	210289	. FLYWEIGHT	8	1
- 30	210314	. HEAD,FLYWEIGHT.	1	1
- 31	192103	. RING,SPRIOLOX RETAINING	1	1
- 32	223003	. DECAL	1	1
- 33	210238	. LEVER,BALL UNSEATING.	1	1
- 34	210248	. PIN	1	1
- 35	210297	. ROD ASSY,LEVER PUSH/USED WITH SYNCHRONIZER/	1	1
- 36	218220	. CAP,SHIPPING.	1	1
- 37	217590	. ELBOW	1	1
- 38	217582	. PLUG,ELBOW ADAPTING	1	1
- 39	182506	. O RING.	1	1
- 40	182478	. O RING.	1	1
- 41	5261-0321	. VALVE ASSY,BALLCHECK.	1	1
- 42	210276	. BRACKET ASSY,CHECK VALVE.	1	1
- 43	4030-021	. BODY,GOVERNOR/WITH SYNCHRONIZER/.	1	1
	210376	. BODY,GOVERNOR/WITHOUT SYNCHRONIZER/	1	1
	210067	. VALVE ASSY,RELIFE	1	1
- 44	210076	. . CAP,RELIEF VALVE.	1	1
- 45	186320	. . GASKET.	2	1
- 46	186321	. . SHIM.	AR	1
- 47	210077	. . STOP,RELIEF VALVE	1	1
- 48	192370	. . SPRING.	1	1
- 49	210078	. . PLUNGER,RELIEF VALVE.	1	1
- 50	210071	. . BODY,RELIEF VALVE	1	1

BEECHCRAFT
DUKE B60
ILLUSTRATED PARTS CATALOG



B60-254-3

B E E C H C R A F T
DUKE B60
I L L U S T R A T E D P A R T S C A T A L O G

GAMA/ATA CODE & INDEX NO.	PART NO.	DESCRIPTION	1 2 3 4 5 6 7							UNITS PER ASSY	USABLE ON CODE
			1	2	3	4	5	6	7		
20-10 - 51	210112	. PIN, FLYWEIGHT PIVOT								1	1
- 52	223423	. NAMEPLATE								1	1
- 53	204864	. GEAR, PUMP IDLER								1	1
- 54	210036	. BEARING, IDLER GEAR								1	1
- 55	210031	. STUD, IDLER GEAR								1	1
- 56	184793	. PIN, DOWEL								2	1
- 57	210206	. GEAR, PUMP DRIVE								1	1
- 58	206336	. RING, OIL SEAL								1	1
- 59	210366	. BASE								1	1
- 60	MS100009	. GASKET, VALVE MOUNTING								2	1
- 61	218036	. SCREW, FILLISTER HEAD								2	1

NOTE THE FOLLOWING PARTS/PART OF 60-389000-3
ASSY/, USED WITH SYNCHRONIZER INSTL./

- 62	182618	. O RING								1	1
- 63	219380	. NUT, PICKUP LOCK								1	1
- 64	213127	. PICKUP, MAGNETIC								1	1
- 65	1609112	. CLAMP, PICK UP WIRE /ATTACHING PARTS/								1	1
- 66	218345	. SCREW								1	
- 67	189489	. WASHER								1	

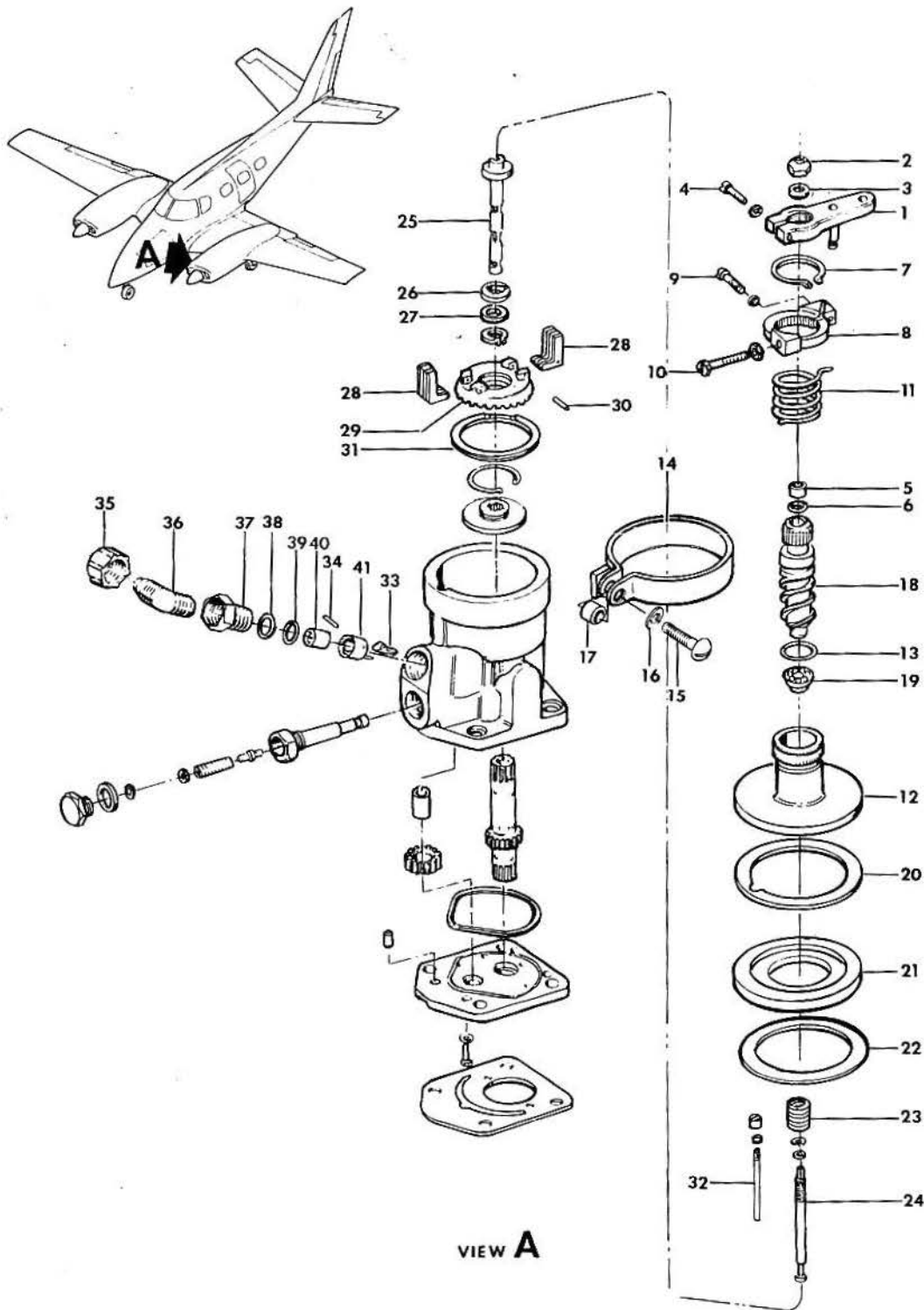
CODES OF EFFECTIVITY

1 P-247 THRU P-555

B E E C H C R A F T
DUKE B60
I L L U S T R A T E D P A R T S C A T A L O G

61-20-12
PROPELLER GOVERNOR
P-556 AND AFTER

BEECHCRAFT
DUKE B60
ILLUSTRATED PARTS CATALOG



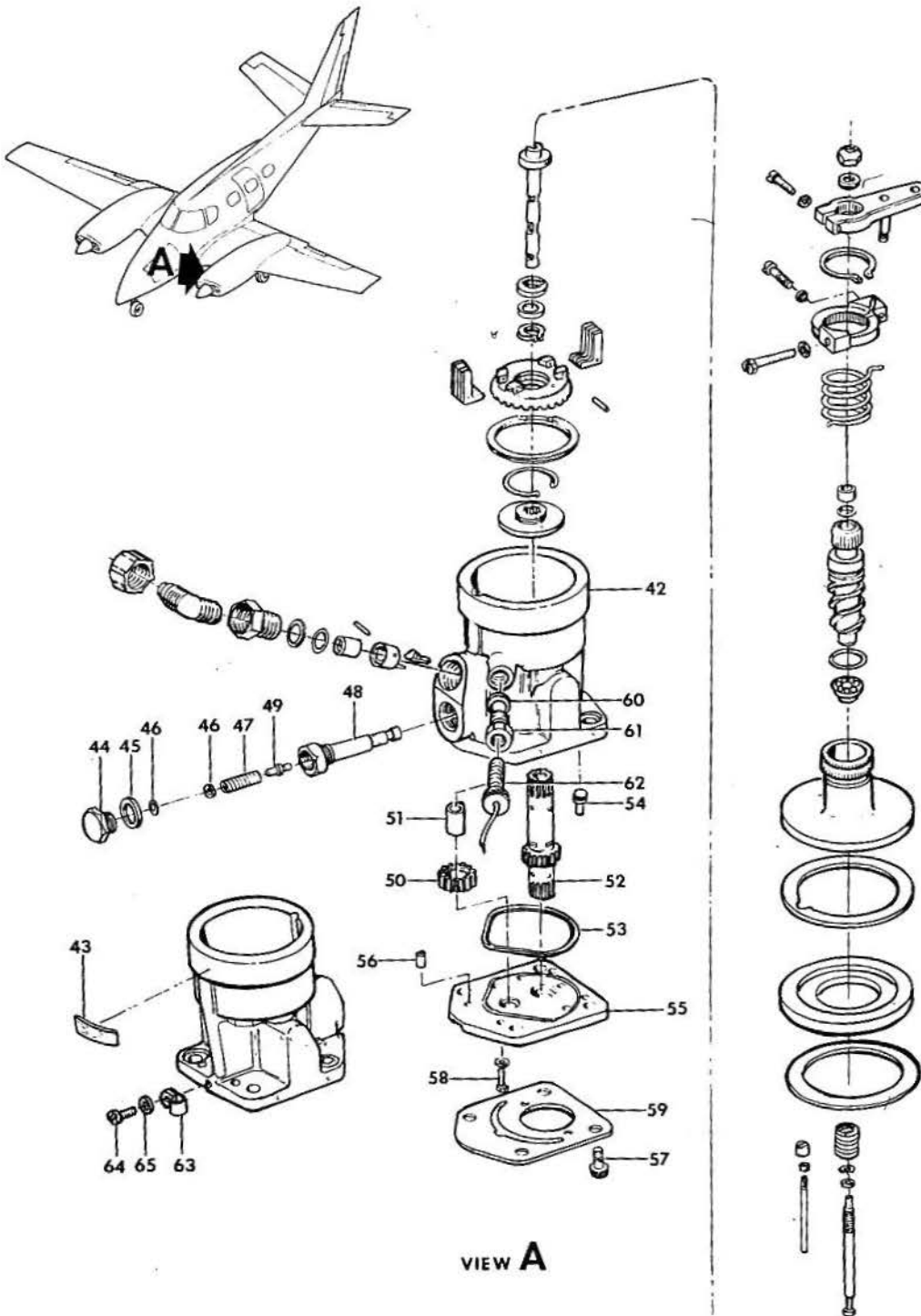
VIEW A

B60-254-6

B E E C H C R A F T
DUKE B60
I L L U S T R A T E D P A R T S C A T A L O G

GAMA/ATA CODE & INDEX NO.	PART NO.	DESCRIPTION	UNITS PER ASSY	USABLE ON CODE		
					1	2
20-12	60-389000-5	GOVERNOR ASSY, PROPELLER	2	1		
	60-389000-7	GOVERNOR ASSY, PROPELLER/WITH SYNCHRONIZER/.	2	1		
		BOTH GOVERNORS ON ONE AIRPLANE MUST BE THE SAME PART NUMBER.				
- 1	4451-076	. LEVER ASSY, SPEED ADJUSTING.	1	1		
- 2	189522	. NUT, LIFT ROD.	1	1		
- 3	186283	. WASHER.	1	1		
- 4	1039-068	. SCREW	1	2		
	188141	. WASHER.	1	1		
- 5	210034	. BUSHING, LIFT ROD.	1	1		
- 6	182628	. O RING.	1	1		
- 7	189880	. RING, RETAINING.	1	1		
	219414	. RING.	1	1		
- 8	4304-032	. RING ASSY, STOP.	1	1		
- 9	219375	. SCREW	1	1		
	188302	. NUT, STOP.	1	1		
- 10	189530	. SCREW	1	1		
	189739	. WASHER.	1	1		
- 11	3013-516	. SPRING, CONTROL LEVER.	1	1		
- 12	4060-519	. COVER ASSY.	1	1		
- 13	182799	. O RING.	1	1		
- 14	1299-108	. CLAMP ASSY, COVER.	1	1		
- 15	189612	. SCREW, CLAMP ATTACH.	1	1		
- 16	186234	. WASHER.	1	1		
- 17	3951-014	. SPACER.	1	1		
- 18	3026-821	. SHAFT ASSY, SPEED ADJUSTING.	1	1		
- 19	3551-034	. SEAT, UPPER SPRING	1	1		
- 20	3053-032	. GASKET, COVER.	1	1		
- 21	6851-204	. ADAPTER ASSY, UNFEATHERING	1	1		
- 22	3053-034	. GASKET, COVER.	1	1		
- 23	192761	. SPRING, SPEEDER.	1	1		
- 24	3369030	. ROD, PILOT VALVE LIFT.	1	1		
- 25	5221-218	. PLUNGER ASSY, PILOT VALVE.	1	1		
- 26	180231	. RETAINER, THRUST BEARING BALL.	1	1		
- 27	3211-068	. BEARING, LOWER RACE.	1	1		
- 28	210289	. FLYWEIGHT	8	1		
- 29	210314	. HEAD ASSY, FLYWEIGHT	1	1		
	213430	. HEAD ASSY, FLYWEIGHT/WITH SYNCHRONIZER/.	1	1		
- 30	210112	. PIN, FLYWEIGHT PIVOT	1	1		
- 31	192103	. RING, SPRIOLOX RETAINING	1	1		
- 32	5100-066	. ROD ASSY, LEVER PUSH	1	1		
- 33	210238	. LEVER, BALL UNSEATING.	1	1		
- 34	210248	. PIN, BALL UNSEATING LEVER.	1	1		
- 35	218220	. CAP, PLASTIC SHIPPING.	1	1		
- 36	217590	. ELBOW, FLARED.	1	1		
- 37	217582	. PLUG, ELBOW ADAPTING	1	1		
- 38	1355-168	. O RING.	1	1		
- 39	182621	. O RING.	1	1		
- 40	5261-036	. VALVE ASSY, BALLCHECK.	1	1		
- 41	210276	. BRACKET ASSY, CHECK VALVE.	1	1		

BEECHCRAFT
DUKE 860
ILLUSTRATED PARTS CATALOG



VIEW A

B60-254-7

B E E C H C R A F T
DUKE 860
I L L U S T R A T E D P A R T S C A T A L O G

GAMA/ATA CODE & INDEX NO.	PART NO.	DESCRIPTION	1 2 3 4 5 6 7							UNITS PER ASSY	USABLE ON CODE
			1	2	3	4	5	6	7		
20-12 - 42	4030-073	• BODY ASSY, GOVERNOR	1	1
	4030-058	• BODY ASSY, GOVERNOR/WITH SYNCHRONIZER/	1	1
- 43	3082-145	• DECAL, IDENTIFICATION	1	1
- 44	3613-033	• PLUG, RELIEF VALVE	1	1
	57761	• SAFETY WIRE	AR	1
- 45	182799	• O RING	1	1
- 46	3111-022	• SHIM	AR	1
- 47	1521-920	• SPRING, RELIEF VALVE	1	1
- 48	3290-054	• SLEEVE, RELIEF VALVE	1	1
- 49	3180-050	• PLUNGER, RELIEF VALVE	1	1
	210248	• PIN	1	1
- 50	5336-012	• GEAR ASSY, PUMP IDLER	1	1
- 51	3274-038	• STUD, IDLER GEAR	1	1
- 52	3020-128	• GEAR, PUMP DRIVE	1	1
- 53	206336	• SEAL, FORMED OIL	1	1
	182649	• O RING	1	1
- 54	4945-018	• PLUG, PREFORMED PACKING	1	1
- 55	4000-090	• BASE, GOVERNOR	1	1
- 56	184793	• PIN, DOWEL	2	1
- 57	190734	• PLUG, STAINLESS PIPE	1	1
- 58	188326	• SCREW, FILLISTER HEAD	2	1
- 59	209217	• GASKET, GOVERNOR MOUNTING	1	1

NOTE THE FOLLOWING PARTS ARE USED
WITH SYNCHRONIZER INSTALLATION.

- 60	182618	• O RING	1	1
- 61	219380	• NUT, PICKUP LOCK	1	1
- 62	213181	• PICKUP, MAGNETIC	1	1
- 63	1609-112	• CLAMP, WIRE	1	1
- 64	1028-870	• SCREW	1	1
- 65	186459	• WASHER	1	1
	1609-510	• STRAP, WIRE TIE	1	1

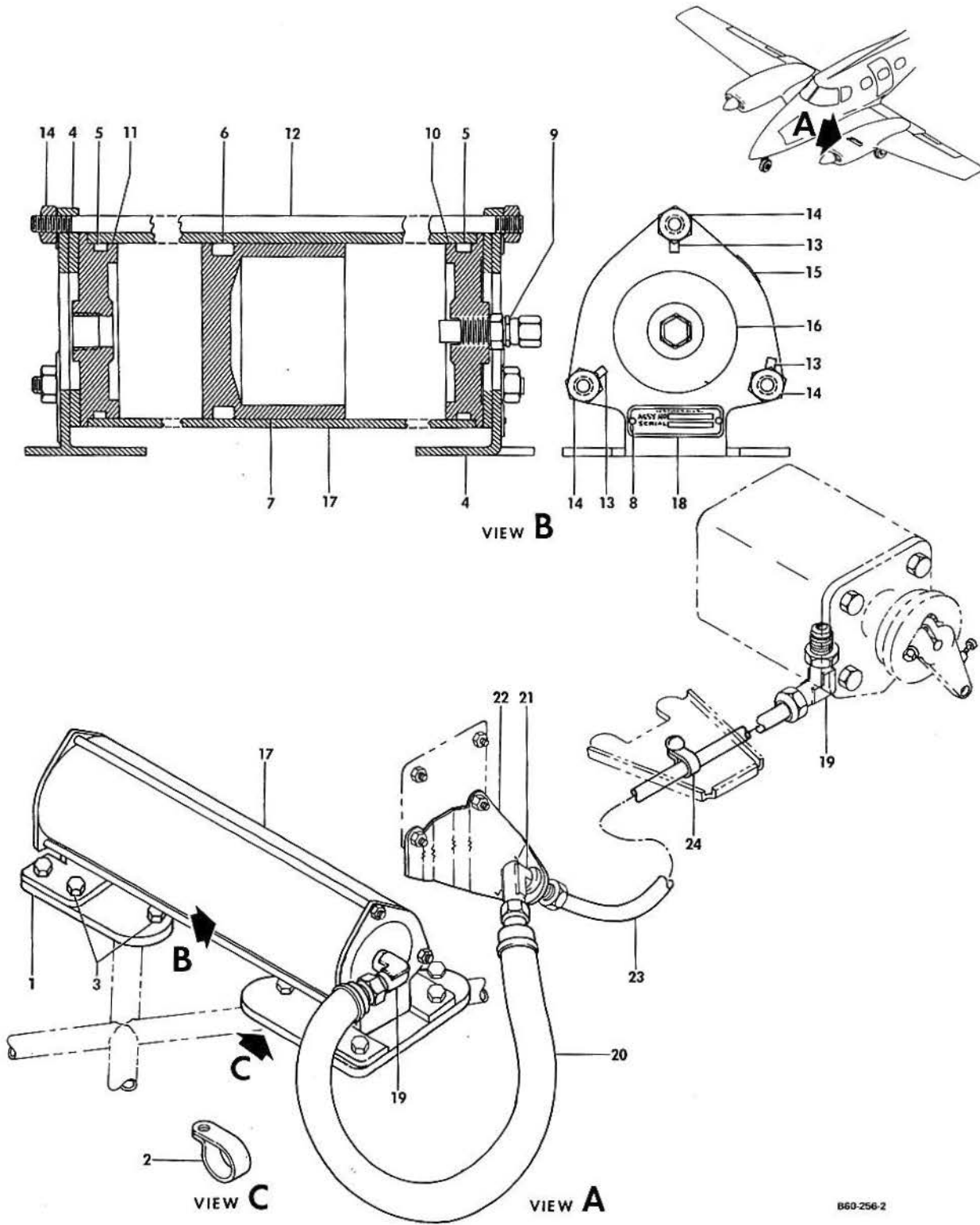
CODES OF EFFECTIVITY

1 P-556 AND AFTER

B E E C H C R A F T
DUKE B6G
I L L U S T R A T E D P A R T S C A T A L O G

61-20-20
GOVERNOR ACCUMULATOR

BEECHCRAFT
DUKE B60
ILLUSTRATED PARTS CATALOG



B E E C H C R A F T
DUKE B60
I L L U S T R A T E D P A R T S C A T A L O G

GAMA/ATA CODE & INDEX NO.	PART NO.	DESCRIPTION							UNITS PER ASSY	USABLE ON CODE
		1	2	3	4	5	6	7		
20-20	96-960016	ACCUMULATOR INSTALLATION,PROP GOVERNOR.							NP	
- 1	96-960016-3	. PLATE,ACCUMULATOR MOUNTING.							4	
	8907-001	. ACCUMULATOR ASSY.							2	
		/ATTACHING PARTS/								
- 2	MS21919H10	. CLAMP							2	
- 3	130909B14	. BOLT.							2	
	AN960-10	. WASHER.							2	
	130909N29	. NUT							2	

- 4	4339-009	. . BRACKET ASSY,ACCUMULATOR.							2	
- 5	182779	. . PACKING,PREFORMED							2	
- 6	182780	. . PACKING,PREFORMED							1	
- 7	213324	. . PISTON.							1	
- 8	208066	. . SCREW,DRIVE							2	
- 9	210267	. . VALVE							1	
- 10	213322	. . PLUG.							1	
- 11	213323	. . PLUG.							1	
- 12	219255	. . STUD.							3	
- 13	219255	. . WASHER.							6	
- 14	190911	. . NUT							6	
- 15	223003	. . DECAL,ASSEMBLY DATE							1	
- 16	223194	. . DECAL,PRESSURE RELEASE.							2	
- 17	3286-022	. . CYLINDER,ACCUMULATOR.							1	
- 18	3082-136	. . NAMEPLATE,ACCUMULATOR							1	
- 19	AN822-6	. . ELBOW							2	
- 20	130524-6-01600	. . HOSE ASSY							1	
- 21	AN833-6	. . ELBOW							1	
- 22	96-960016-7	. . BRACKET,HOSE ASSY							1	
- 23	96-960016-1	. . TUBE ASSY							1	
		/ATTACHING PARTS/								
	AN960-916	. . WASHER.							1	
	AN924-6	. . NUT							1	
- 24	MS21919H6	. . CLAMP							1	
	1006960-ZL016	. . SPACER.							1	
	AN515-10R16	. . SCREW							1	
