

B E E C H C R A F T
DUKE B60
I L L U S T R A T E D P A R T S C A T A L O G

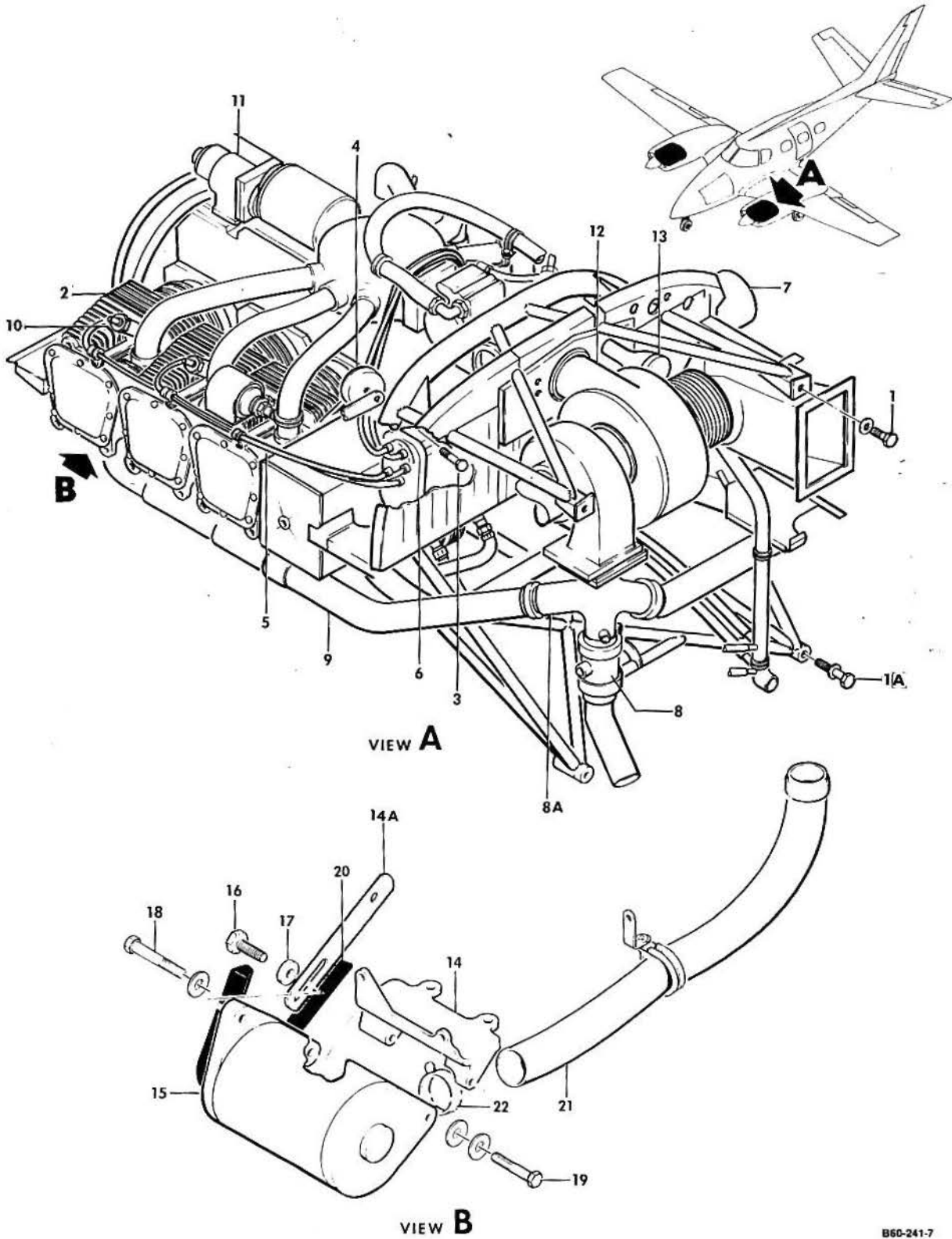
LIST OF PAGES & TABLE OF CONTENTS
FOR
CHAPTER 71-00-00 POWER PLANT

CHAP/SUB- SECT & UNIT	PAGE NO.	EFFECTIVE DATE	TABLE OF CONTENTS
71-00-00	1	04/19/84. 04/19/84 LIST OF PAGES & TABLE OF CONTENTS
71-00-01	1	03/20/81. POWER PLANT
71-00-01	2	04/19/84	
71-00-01	3	04/19/84	
71-00-01	4	03/20/81	
71-00-01	5	03/20/81	
71-00-01	6	03/20/81	
71-00-01	7	04/16/82	
71-00-01	8	03/20/81	
71-00-01	9	03/20/81	
71-00-01	10	03/20/81	
71-00-01	11	03/20/81	
71-00-01	12	03/20/81	
71-00-01	13	03/20/81	
71-00-01	14	03/20/81	
71-00-01	15	04/16/82	
71-10-10	1	03/20/81. ENGINE COWLING.
71-10-10	2	03/20/81	
71-10-10	3	03/20/81	
71-10-10	4	03/20/81	
71-10-10	5	04/16/82	
71-10-10	6	03/20/81	
71-10-10	7	03/20/81	
71-60-10	1	03/20/81. ENGINE BAFFLES.
71-60-10	2	03/20/81	
71-60-10	3	04/16/82	
71-60-10	4	03/20/81	
71-60-10	5	03/20/81	
71-60-10	6	03/20/81	
71-60-10	7	03/20/81	
71-60-10	8	03/20/81	
71-60-10	9	04/16/82	
71-60-20	1	03/20/81. INDUCTION AIR BOX ASSEMBLY.
71-60-20	2	03/20/81	
71-60-20	3	03/20/81	
71-70-20	1	03/20/81. ENGINE DRAINS
71-70-20	2	03/20/81	
71-70-20	3	03/20/81	

BEECHCRAFT
DUKE B60
ILLUSTRATED PARTS CATALOG

71-00-01
POWER PLANT

BEECHCRAFT
DUKE B60
ILLUSTRATED PARTS CATALOG



B60-241-7

FIGURE 00-01. POWER PLANT
/SHEET 1 OF 7 SHEETS/

B E E C H C R A F T
DUKE B60
I L L U S T R A T E D P A R T S C A T A L O G

SUB-SECT UNIT & ITEM NO.	PART NO.	DESCRIPTION	UNITS PER ASSY	USABLE ON CODE
		1 2 3 4 5 6 7		
00-01	60-910001-3	POWER PLANT INSTALLATION.	NP	1
	60-910001-9	POWER PLANT INSTALLATION.	NP	2
	60-910001-601	. POWER PLANT ASSY,LH	1	
	60-910001-602	. POWER PLANT ASSY,RH	1	
		/ATTACHING PARTS/		
- 1	NAS146-23/M/	. BOLT,UPPER.	2	
- 1A	NAS146-58/M/	. BOLT,LOWER.	2	
	MS20002C6	. WASHER.	4	
	ZEB1845-064	. NUT	4	

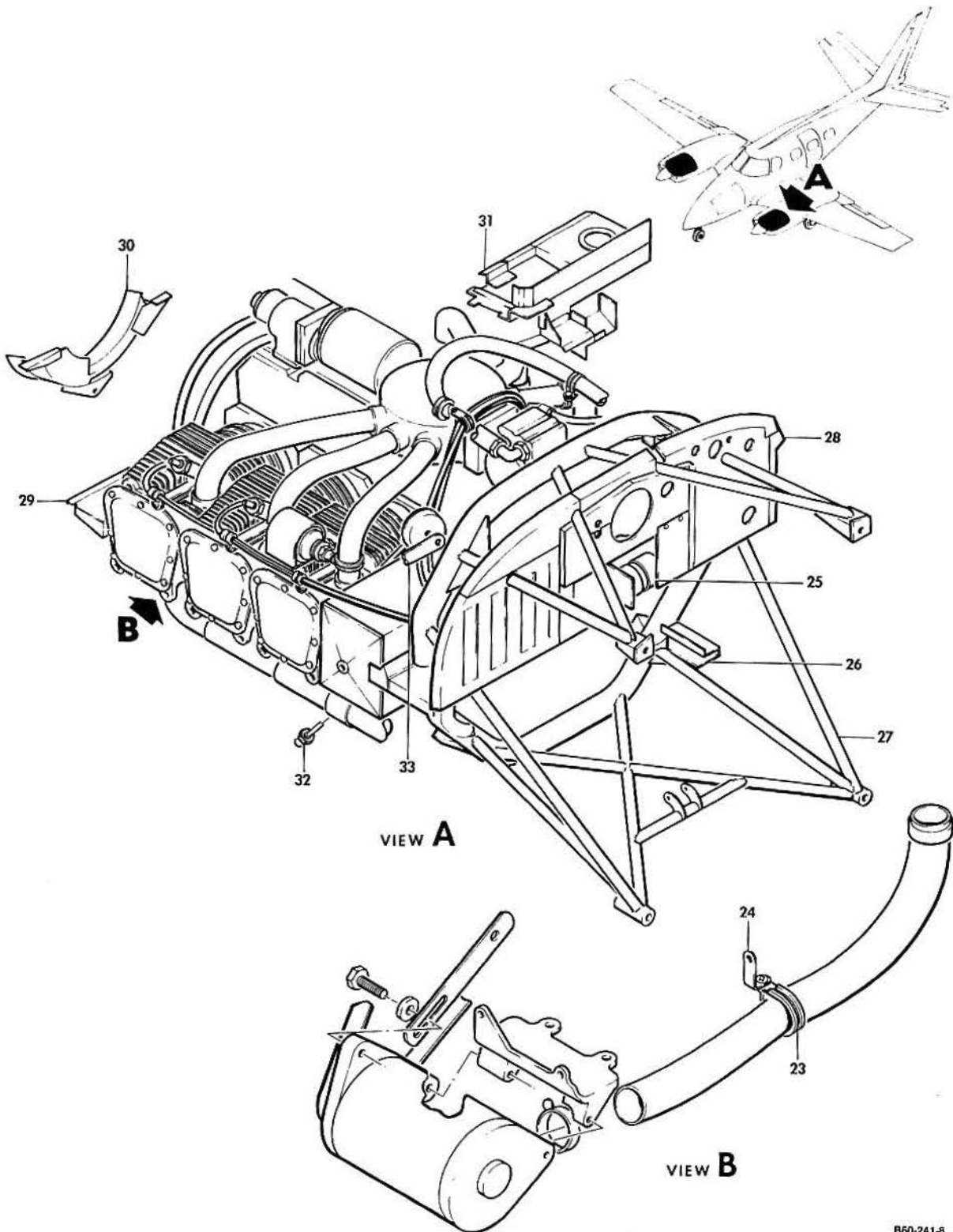
- 2	TIO-541E1C4	. . ENGINE ASSY,TURBO-SUPERCHARGED /SEE AVCO. .	1	
		LYCOMING PC-120 PARTS CATALOG FOR		
		ENGINE BREAKDOWN/		
		/ATTACHING PARTS/		
- 3	AN7-34A/M/	. . BOLT.	4	
- 4	J9613-9	. . MOUNT ASSY,VIBRATION ISOLATOR	4	
	AN960-716	. . WASHER.	4	
	MS20365-720C/M/	. . NUT	4	

- 5	78921	. . . HARNESS,SHIELDED IGNITION	1	
- 6	LW-349290-2	. . . MAGNETO,LH/S6LN-1208/	1	
	LW-349310-4	. . . MAGNETO,RH/S6RN-1209/	1	
	10-357063	. . . POINTS,RH CONTACT	2	
	10-357091	. . . POINTS,LH CONTACT	2	
- 7	LW11198	. . . ELEMENT,ENGINE OIL FILTER	1	
	MS9021-154	. . . GASKET,OIL FILTER COVER	1	
	LW12254	. . . ALUMINUM RING,OIL FILTER.	1	
- 8	LW10759	. . . GATE ASSY,EXHAUST WASTE /SEE CHAPTER 78/. .	1	
- 8A	LW11005	. . . TRANSITION,EXHAUST.	1	
- 9	77944	. . . EXHAUST ASSY,LH /SEE CHAPTER 78-10-10/. .	1	
	77943	. . . EXHAUST ASSY,RH /SEE CHAPTER 78-10-10/. .	1	
- 10	RHB36P	. . . SPARK PLUG/CHAMPION/LONG REACH/	12	
	HSR87LP	. . . SPARK PLUG /AC/LONG REACH/.	12	
- 11	MHB4002	. . . STARTER ASSY /SUPERSEDES 75700/	1	
		/SEE CHAPTER 80-10-01/		
- 12	LW13310	. . . TURBOCHARGER.	1	
- 13	77796	. . . NOZZLE ASSEMBLY,SONIC	1	
	76476	. . . FUEL INJECTOR	1	
	R 77829	. . . KIT,GENERATOR MOUNTING.	1	
- 14	R 78459	. . . BRACKET,GENERATOR MOUNTING.	1	
- 14A	R 76616	. . . LINK,GENERATOR ADJUSTING.	1	
- 15	60-910001-7	. . . GENERATOR/SEE CHAPTER 24-30-01/	1	
		/ATTACHING PARTS/		
- 16	MS20074-06-06	. . . BOLT/BELT ADJUSTMENT/	1	
- 17	60-910000-61	. . . WASHER.	1	
- 18	AN6-24/M/	. . . BOLT,FWD.	1	
- 19	AN6H11A	. . . BOLT,AFT.	1	
	96-910004-31	. . . SHIM /BETWEEN GENERATOR & BRACKET/.	AR	
	AN960-616	. . . WASHER.	4	
	MS20365-624C	. . . NUT	1	

- 20	8373	. . . BELT,GENERATOR DRIVE /MATCHED PAIRS ONLY/ .	2	
- 21	109644-028-5A	. . . HOSE,GENERATOR COOLING.	1	
- 22	105798-7	. . . CLAMP,GENERATOR COOLING HOSE.	2	
		/ATTACHING PARTS/		
	MS35265-79	. . . SCREW /SUPERSEDES AN500A416-8/.	1	
	AN936A416	. . . WASHER,LOCK	1	

	50-369064-13	. . . CLIP,HARNESS SUPPORT.	1	
	TY5	. . . TIE,WIRE HARNESS.	10	

BEECHCRAFT
DUKE B60
ILLUSTRATED PARTS CATALOG

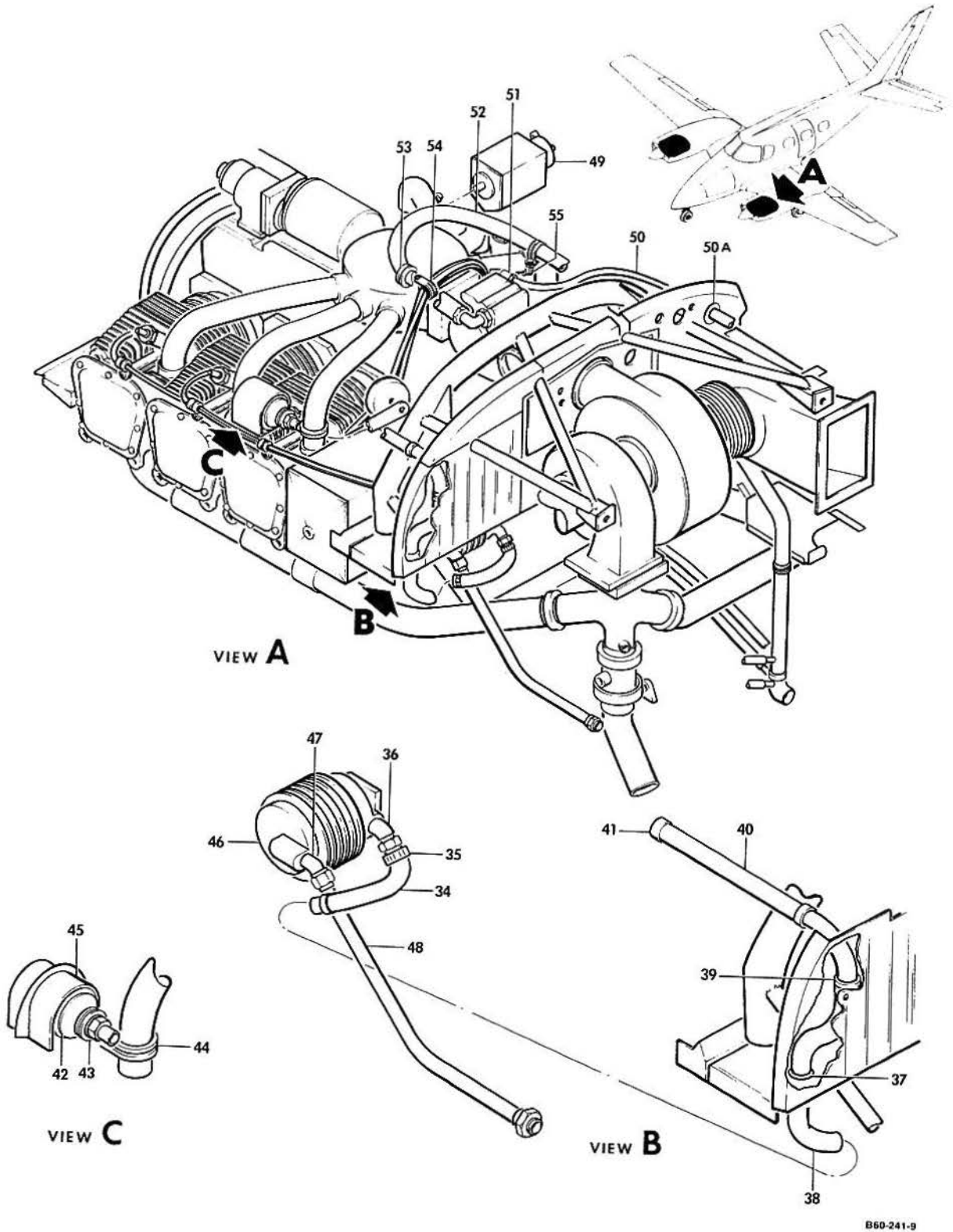


B60-241-8

B E E C H C R A F T
DUKE B60
I L L U S T R A T E D P A R T S C A T A L O G

GAMA/ATA CODE & INDEX NO.	PART NO.	DESCRIPTION							UNITS PER ASSY	USABLE ON CODE
		1	2	3	4	5	6	7		
00-01 - 23	MS21919H34	1	
		CLAMP,GENERATOR COOLING HOSE								
		/ATTACHING PARTS/								
	AN520-10-8	1	
	AN960-10	1	
	130909N29	1	
		-----*								
- 24	96-910004-23	1	
		CLIP,COOLING HOSE SUPPORT								
		/ATTACHING PARTS/								
	52N4058	2	
		-----*								
- 25	60-910052	1	
		GENERATOR ASSY,TACHOMETER								
	50-389057-1	1	
		GENERATOR,TACHOMETER								
	60-910052-3	1	
		CUSHION,ADAPTER								
	60-910052-1	1	
		ADAPTER,DRIVE								
		/ATTACHING PARTS/								
	NAS561-2-7	1	
		-----*								
- 26	50-990030	1	
		RETAINER,								
	B3-1-2	1	
		GASKET,TACHOMETER GENERATOR								
	50-910443-2	1	
		SHIELD ASSY,ENGINE MOUNT HEAT RH.								
		/ATTACHING PARTS/								
	MS35207-263	2	
		SCREW /SUPERSEDES AN520-10R8/								
	AN960-10L	2	
		WASHER								
	130909N29	2	
		-----*								
- 27	60-910023-69	1	
		MOUNT ASSY.								
- 28	60-910020-129	NP	
		BAFFLE INSTL,ENGINE /SEE 71-60-10/.								
- 29	60-910027-35	1	
		BAFFLE ASSY /SEE 71-60-10/.								
		/ATTACHING PARTS/								
	52N4058	4	
		NUT								
	100696XZT008	1	
		SPACER								
	100696DZT008	1	
		SPACER								
	AN960-516	AR	
		-----*								
- 30	60-910030-41	1	
		BAFFLE ASSY /SEE 71-60-10/.								
		/ATTACHING PARTS/								
	MS35207-263	2	
		SCREW /SUPERSEDES AN520-10R8.								
	AN960-10	2	
		WASHER								
	MS35265-79	1	
		SCREW /SUPERSEDES AN500A416-8/.								
	AN936A416	1	
		WASHER,LOCK								
		-----*								
- 31	60-910036-41	1	
		BAFFLE ASSY /SEE 71-60-10/.								
		/ATTACHING PARTS/								
	MS35265-79	1	
		SCREW								
	AN935A416	1	
		WASHER,LOCK								
		-----*								
- 32	MS28034-1	1	
		BULB,OIL TEMPERATURE								
- 33	60-369000-63	2	5
		BONDING JUMPER								
	1H6H	1	6
		BONDING JUMPER/ALT FOR 7400-30-24/.								
	7400-30-24	1	6
		BONDING JUMPER/ALT FOR 1H6H/.								
		/ATTACHING PARTS/								
	AN7-5A/M/	1	
		BOLT								
	AN960-716	1	
		WASHER								
	MS20364-720C	1	
		NUT								
	AN6-5/M/	1	
		BOLT								
	AN960-616	1	
		WASHER								
	MS20364-624C	1	
		NUT								
		-----*								
	60-369000-75	2	5
		LINK,BONDING JUMPER								
	60-369000-165	1	6
		LINK,BONDING JUMPER								
	60-369000-73	2	5
		LINK,BONDING JUMPER								
	60-369000-163	1	6
		LINK,BONDING JUMPER								

BEECHCRAFT
DUKE B60
ILLUSTRATED PARTS CATALOG

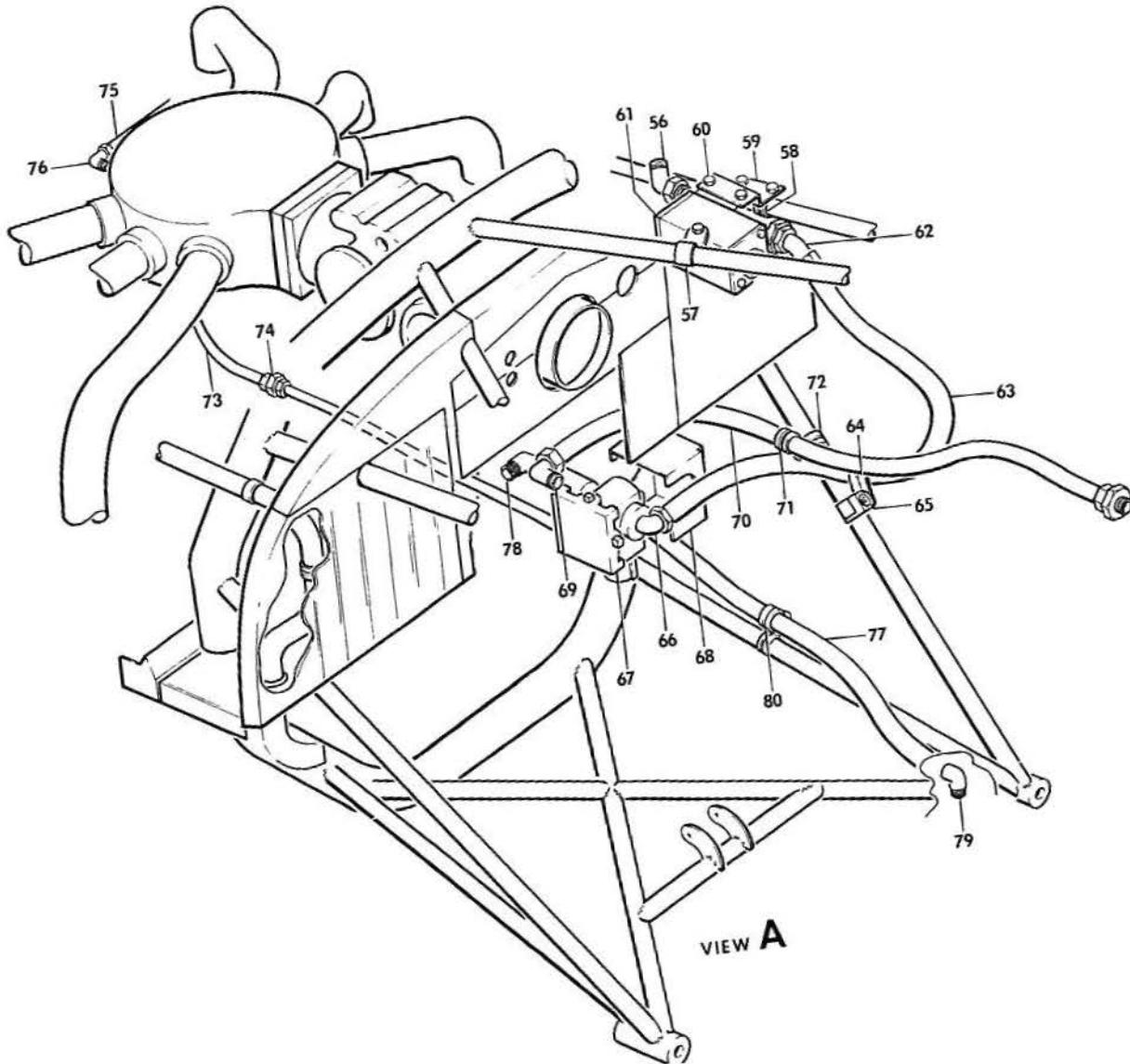
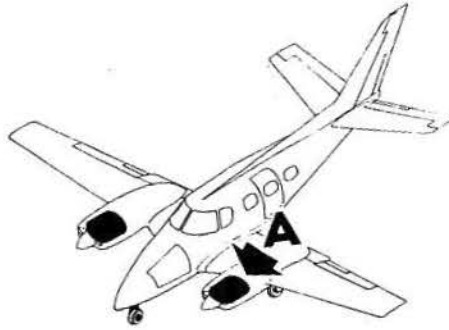


B60-241-9

B E E C H C R A F T
DUKE B60
I L L U S T R A T E D P A R T S C A T A L O G

GAMA/ATA CODE & INDEX NO.	PART NO.	DESCRIPTION							UNITS PER ASSY	USABLE ON CODE
		1	2	3	4	5	6	7		
00-01	R 60-910063-1	NP	7
	R 60-910066-1	NP	8
- 34	106200H12-30	1	7
	R 106200FR12-48	1	8
	K 131545S26-0130	1	8
		/ATTACHING PARTS/								
	K 16H	2	8
	737TW44-48	1	6
- 35	R AN737TW38	2	7
		-----*								
- 36	R 1K1-6-12	1	7
	R 1K1-8-12	1	7
	R 1K9-6-12	1	8
	R 1K9-8-12	1	8
- 37	R MS35489-108	1	7
- 38	R 60-910063-3	1	7
- 39	R MS21919H12	1	7
		/ATTACHING PARTS/								
	R 130909817	1	7
	R 100696DZL008	1	7
	R AN960-10L	1	7
	R MS21044N3	1	7
		-----*								
- 40	R 106200G12-53	1	7
		/ATTACHING PARTS/								
- 41	R AN737TW38	2	7
		-----*								
- 42	R 1J2-5	1	7
	R 1J2-3	1	8
- 43	R MS21919DF16	1	7
- 44	R MS21919DF25	1	7
- 45	R 58-910021-1	1	
		/ATTACHING PARTS/								
	R AN315-3R	1	7
		-----*								
	R MS21042L3	1	8
		/ATTACHING PARTS/								
	AN936A10	1	7
	R AN960-10L	1	8
	AN970-3	2	
	R 100696A-ZC008	1	7
	R NAS43DD6-16	1	8
		-----*								
- 46	242CW	1	
		PUMP,AIR/SUPERSEDES 232CW OR 224CW/								
		/WITHOUT DEICER,AUTO-PILOT,OR DUAL PANE								
	442CW	1	
		PUMP,AIR/SUPERSEDES 432CW/USE WITH.								
		SURFACE DEICE,DUAL PANEL,OR AUTO-PILOT/								
- 47	A1000-12-6	1	
	12-8VTX-0	1	
- 48	60-329017-1	1	
- 49	60-389000-5	1	
	60-389000-7	1	
		GOVERNOR,PROPELLER/LESS SYNCHRONIZER/								
		GOVERNOR,PROPELLER/WITH SYNCHRONIZER/								
		/SEE CHAPTER 61-20-12 FOR BKDN/								
- 50	96-910004-19	1	
- 50A	MS35489-14	1	
- 51	95-920017-7	1	
- 52	330997F6-0344	1	3
		HOSE ASSY/FOR REPLACEMENT PARTS ORDER TUBE.								
		ASSY 60-910001-15,HOSE 60-910001-17								
		AND BRACKET 60-910001-19/								
	60-910001-17	1	4
	60-910001-15	1	4
	60-910001-19	1	4
- 53	MS21919H16	2	
		CLAMP,HOSE SUPPURT.								
		/ATTACHING PARTS/								
	AN520-10R	1	
	AN960-10	1	
	130909N29	1	
		-----*								
- 54	MS21919H19	1	
- 55	MS21919H20	1	

BEECHCRAFT
DUKE B60
ILLUSTRATED PARTS CATALOG



B60-241-10

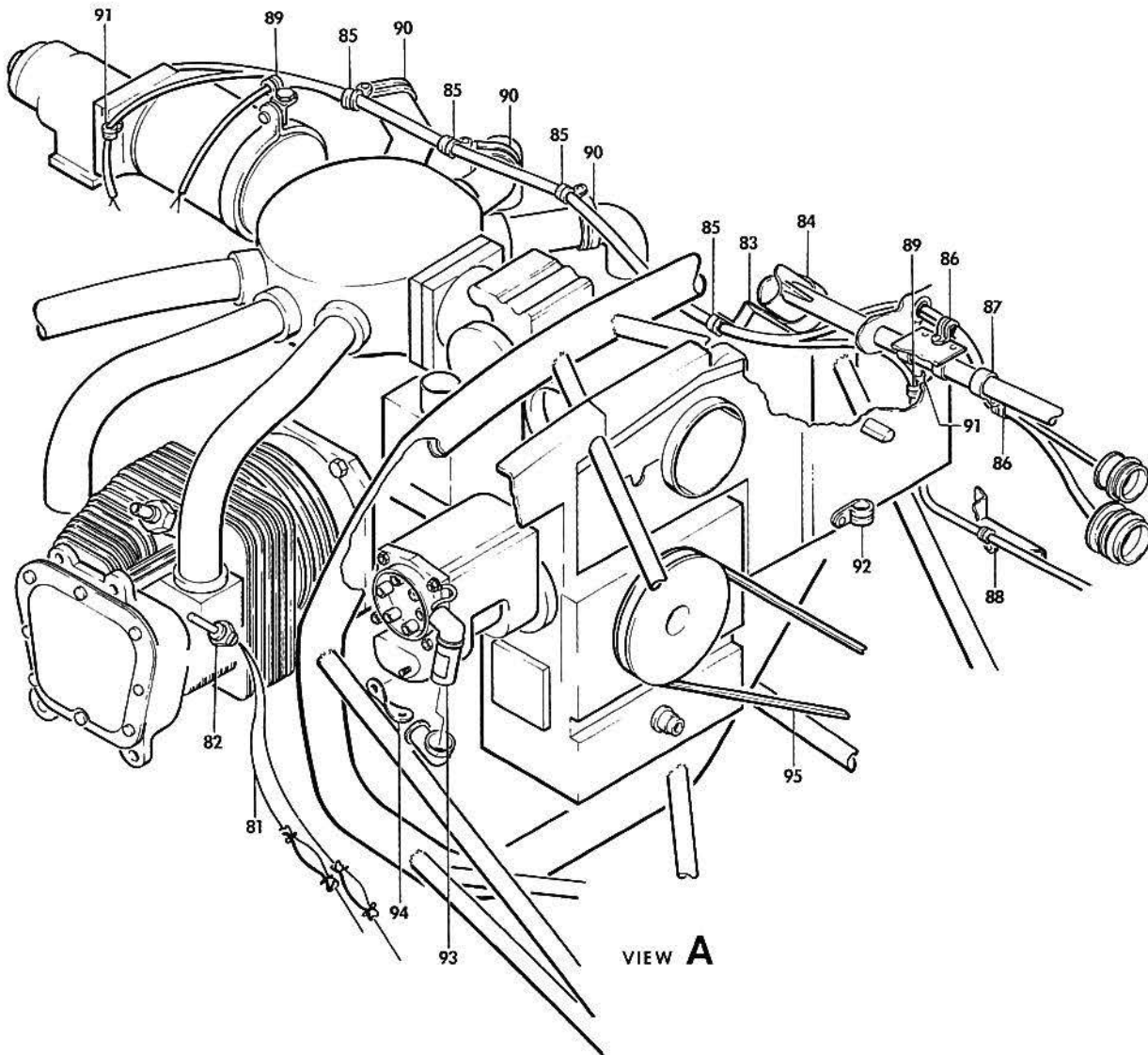
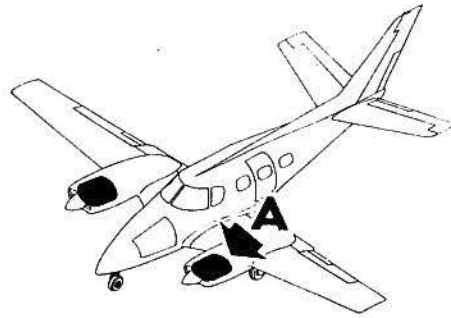
03/20/81

FIGURE 00-01. POWER PLANT
/SHEET 4 OF 7 SHEETS/

B E E C H C R A F T
DUKE B60
I L L U S T R A T E D P A R T S C A T A L O G

GAMA/ATA CODE & INDEX NO.	PART NO.	DESCRIPTION	UNITS PER ASSY	USABLE ON CODE
		1 2 3 4 5 6 7		
00-01 - 56	AN815-6	. . UNION,HOSE TO FLOW TRANSMITTER.	1	1
	MS29512-06	. . O RING	2	1
- 57	TA742S10	. . CLAMP/FLOW TRANSMITTER TO MOUNT/.	1	1
	MS21919H10	. . CLAMP/FLOW TRANSDUCER TO MOUNT/.	1	2
- 58	AN742-14	. . CLAMP	2	1
	MS21919H14	. . CLAMP	2	2
		/ATTACHING PARTS/		
	MS27039-1-06	. . SCREW	1	1
	MS35207-263	. . SCREW	1	2
	AN960-10	. . WASHER	1	
	MS21043-3	. . NUT	1	
- 59	60-910036	. . CLIP,FUEL FLOW TRANSMITTER MOUNT.	1	1
		/ATTACHING PARTS/		
	MS21919H32	. . CLAMP	3	2
- 60	AN4HUA/M/	. . BOLT	2	1
	AN960-416	. . WASHER	2	1
- 61	9133-54B1	. . TRANSMITTER,FUEL FLOW	1	1
	102-389034-3	. . TRANSDUCER,FUEL FLOW	1	2
		/ATTACHING PARTS/		
	AN4H4A/M/	. . BOLT	1	1
	AN960-416	. . WASHER	1	1
	AN924-6	. . NUT	1	1
- 62	AN837-6	. . ELBOW	1	1
- 63	96-910004-61	. . HOSE ASSY/FUEL PUMP OUTLET TO TRANSMITTER/.	1	
- 64	MS21919H16	. . CLAMP/HOSE TO ENGINE MOUNT/.	1	
		/ATTACHING PARTS/		
	AN520-10R9	. . SCREW	1	
	MS20365-1032C	. . NUT	1	
- 65	MS21919D14	. . CLAMP	1	
- 66	60-910031-3	. . ELBOW	1	
	MS35490-11	. . GROMMET	1	
- 67	50-389141-1	. . PUMP,FUEL/SEE CHAPTER 73-10-10/	1	1
	50-389141-13	. . PUMP,FUEL/SEE CHAPTER 73-10-10/	1	2
	626839	. . SPACER	1	
	AN4059-1	. . GASKET	1	
- 68	60-910035-17	. . HEAT SHIELD,FUEL PUMP	1	
- 69	MS20822-8B	. . ELBOW	1	
- 70	96-910004-57	. . TUBE ASSY/FIRE WALL TO FUEL PUMP/	1	
- 71	MS21919D620	. . CLAMP	1	
		/ATTACHING PARTS/		
	130909814	. . BOLT	1	
	130909N29	. . NUT	1	
- 72	AN742D12	. . CLAMP	1	
- 73	96-910004-21	. . TUBE ASSY,FUEL PUMP PRESSURE BALANCE.	1	
- 74	AN815-4D	. . UNION	1	
- 75	96-910004-3	. . TUBE ASSY,FUEL PUMP PRESSURE BALANCE.	1	
- 76	50-910436	. . RESTRICTOR,FUEL PUMP PRESSURE BALANCE	1	
- 77	130524-4-0270	. . HOSE ASSY,OIL PRESSURE	1	
- 78	45-939120	. . RESTRICTOR,OIL PRESSURE	1	
- 79	AN833-4	. . ELBOW,OIL PRESSURE LINE/FIREWALL/	1	
		/ATTACHING PARTS/		
	AN924-4	. . NUT	1	
	AN960-716	. . WASHER	2	
- 80	MS21919H12	. . CLAMP,OIL PRESSURE HOSE SUPPORT	1	
		/ATTACHING PARTS/		
	MS35207-264	. . SCREW	1	
	MS20365-1032C	. . NUT	1	
	AN315-3R	. . NUT	1	
		/ATTACHING PARTS/		
	AN742D10	. . CLAMP	1	

BEECHCRAFT
DUKE B60
ILLUSTRATED PARTS CATALOG

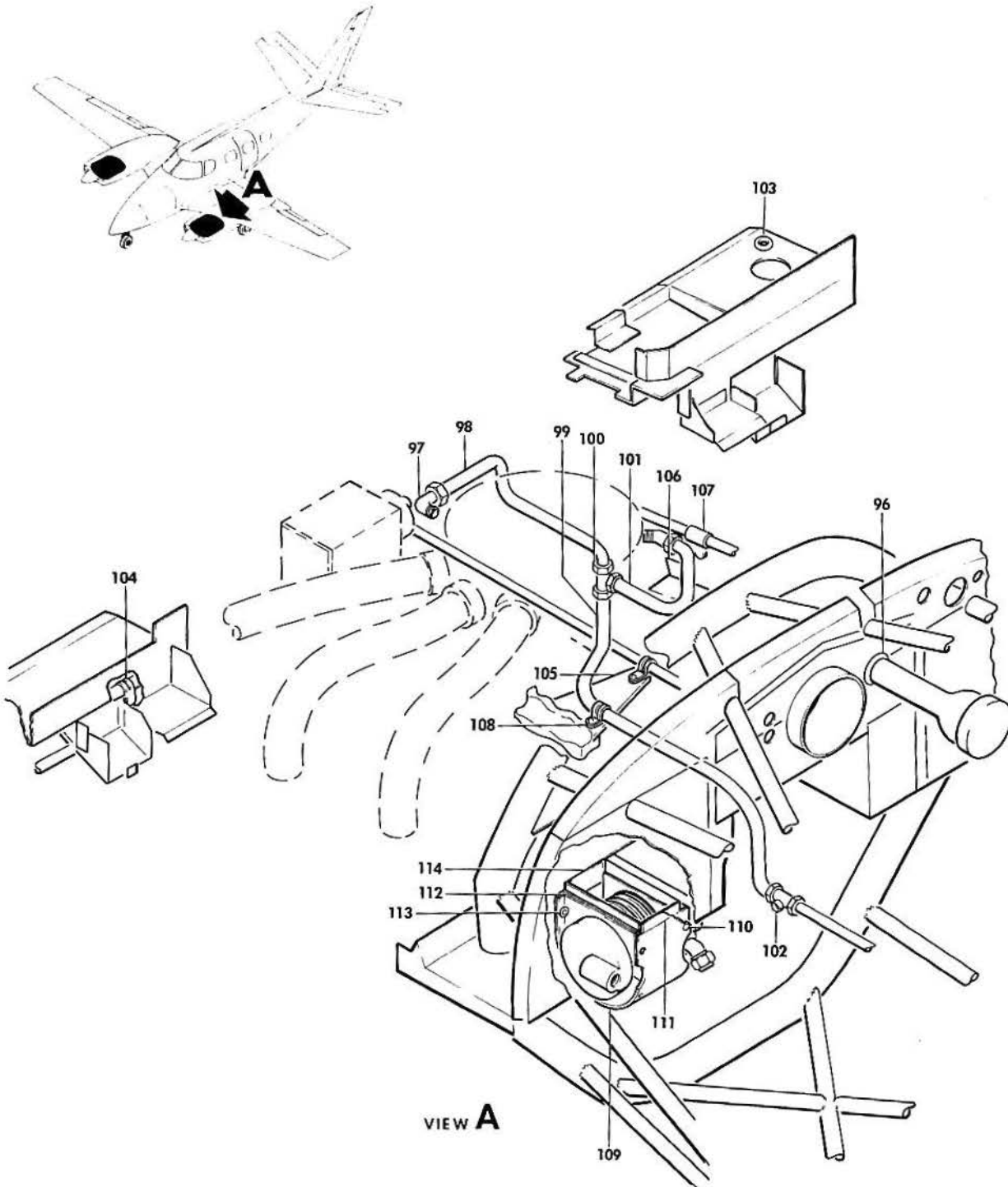


B60-241-11

B E E C H C R A F T
DUKE B60
I L L U S T R A T E D P A R T S C A T A L O G

GAMA/ATA CODE & INDEX NO.	PART NO.	DESCRIPTION							UNITS PER ASSY	USABLE ON CODE	
		1	2	3	4	5	6	7			
00-01 - 81	60-360001-659	•	•	•	•	•	•	•	•	1	
	60-360001-660	•	•	•	•	•	•	•	•	1	
- 82	AN5546-1	•	•	•	•	•	•	•	•	1	
	AN4076-1	•	•	•	•	•	•	•	•	1	
- 83	60-369000-101	•	•	•	•	•	•	•	•	1	
		/ATTACHING PARTS/									
	MS35206-263	•	•	•	•	•	•	•	•	•	2
	AN960-10L	•	•	•	•	•	•	•	•	2	
	130909N29	•	•	•	•	•	•	•	•	2	
- 84	AN742D26	•	•	•	•	•	•	•	•	1	
- 85	MS21919H12	•	•	•	•	•	•	•	•	4	
- 86	MS21919DG14	•	•	•	•	•	•	•	•	2	
		/ATTACHING PARTS/									
	MS35206-263	•	•	•	•	•	•	•	•	•	1
	AN960-102	•	•	•	•	•	•	•	•	1	
	130909N29	•	•	•	•	•	•	•	•	1	
- 87	AN742D14	•	•	•	•	•	•	•	•	1	
- 88	MS21919H8	•	•	•	•	•	•	•	•	1	
		/ATTACHING PARTS/									
	MS35206-267	•	•	•	•	•	•	•	•	•	1
	AN960-10L	•	•	•	•	•	•	•	•	1	
	130909N29	•	•	•	•	•	•	•	•	1	
- 89	MS21919H8	•	•	•	•	•	•	•	•	2	
		/ATTACHING PARTS/									
	MS35206-263	•	•	•	•	•	•	•	•	•	1
	AN960-10L	•	•	•	•	•	•	•	•	1	
	130909N29	•	•	•	•	•	•	•	•	1	
- 90	AN743-12	•	•	•	•	•	•	•	•	1	
	MS21919H26	•	•	•	•	•	•	•	•	3	
		/ATTACHING PARTS/									
	MS35206-263	•	•	•	•	•	•	•	•	1	
	AN960-10L	•	•	•	•	•	•	•	•	1	
	130909N29	•	•	•	•	•	•	•	•	1	
- 91	MS21919H4	•	•	•	•	•	•	•	•	2	
		/ATTACHING PARTS/									
	MS35207-263	•	•	•	•	•	•	•	•	•	1
	AN960-10L	•	•	•	•	•	•	•	•	1	
	130909N29	•	•	•	•	•	•	•	•	1	
- 92	AN742-14	•	•	•	•	•	•	•	•	2	
		/ATTACHING PARTS/									
	130909B17	•	•	•	•	•	•	•	•	•	1
	100696D12-06-008	•	•	•	•	•	•	•	•	1	
	AN960-10L	•	•	•	•	•	•	•	•	1	
	130909N29	•	•	•	•	•	•	•	•	1	
- 93	60-369000-67	•	•	•	•	•	•	•	•	1	
- 94	MS25226-4-3	•	•	•	•	•	•	•	•	1	
	MS25171-1	•	•	•	•	•	•	•	•	3	
- 95	8290XS	•	•	•	•	•	•	•	•	1	
		FOR COMPRESSOR & RELATED PARTS/									

BEECHCRAFT
DUKE B60
ILLUSTRATED PARTS CATALOG



B60-241-12

B E E C H C R A F T
DUKE B60
I L L U S T R A T E D P A R T S C A T A L O G

GAMA/ATA CODE & INDEX NO.	PART NG.	DESCRIPTION							UNITS PER ASSY	USABLE ON CODE
		1	2	3	4	5	6	7		
00-01 - 96	AN931-14-20	1	
- 97	96-920014	1	
- 98	96-910004-1	1	
- 99	96-910004-15	1	
-100	AN824-4D	1	
-101	96-910004-33	1	
-102	MS20825-4	1	
-103	MS35489-8S	1	
-104	MS21919H9	2	
			/ATTACHING PARTS/
	130909812	1	
	AN960-10L	1	
	MS20365-1032C	1	

	AN743-10	1	
-105	60-940019-1	1	
-106	60-940019-1	1	
			/ATTACHING PARTS/
	AN936B616	2	

-107	PP561DS4	1	
			/ATTACHING PARTS/
	130909820	1	
	AN960-10	1	
	130909N29	1	

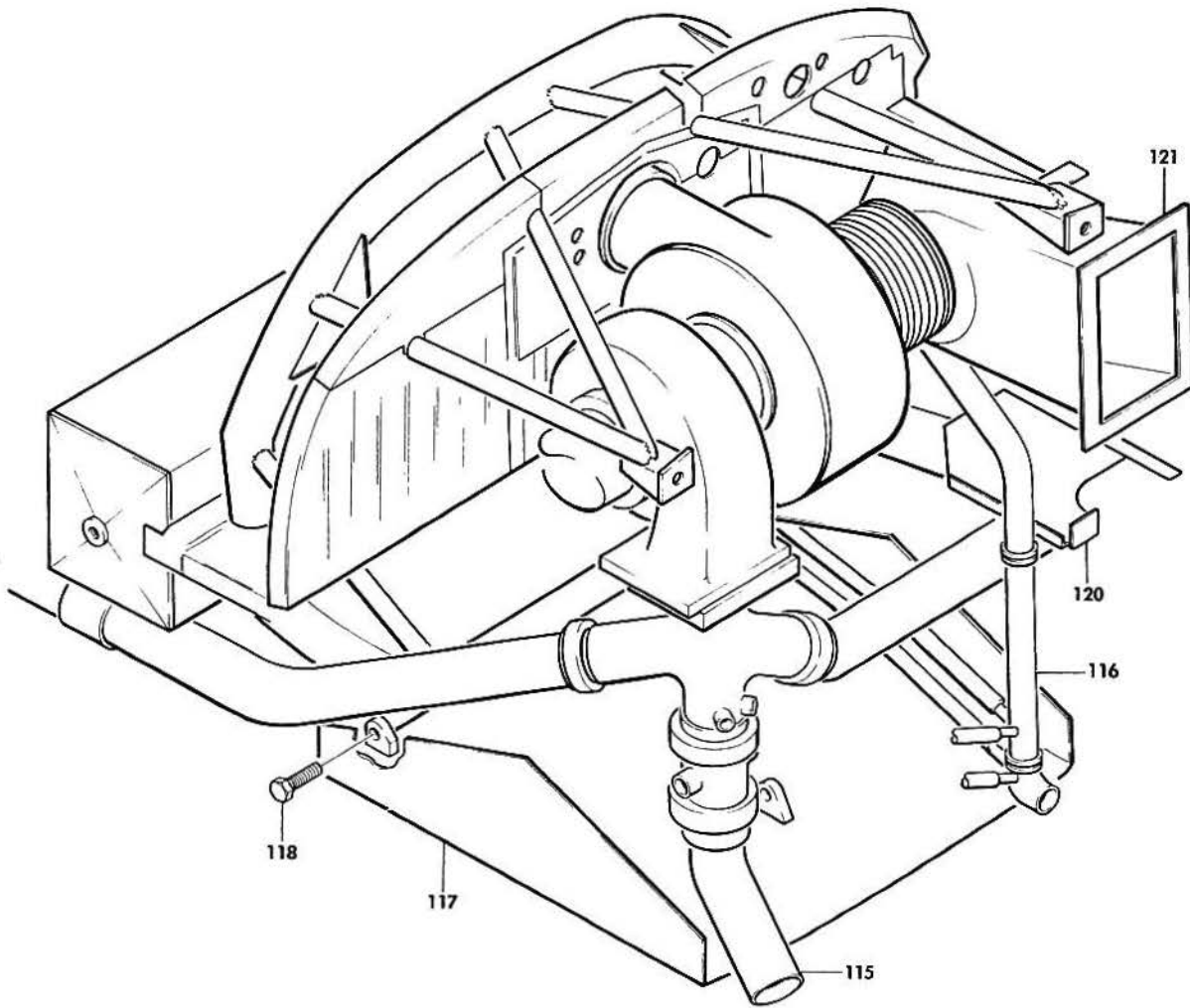
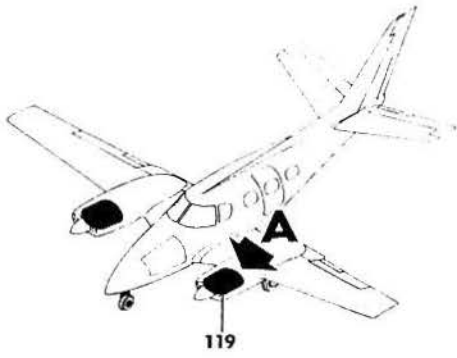
-108	MS21919H4	1	
			/ATTACHING PARTS/
	AN520-10R	1	
	AN960-10	1	
	MS20365-1032C	1	

	60-500037-601	1	
			SURFACE DEICE OPTION & HEAVY DUTY PUMP/
			/ATTACHING PARTS/
	MS35266-59	4	
	MS35266-61	8	
	AN936A8	8	

-109	60-500037-3	1	
			/ATTACHING PARTS/
-110	AN515-4-5	10	
	AN960-4	10	
	MS21042L04	10	

-111	60-500037-11	2	
	60-500037-9	2	
-112	60-500037-5	2	
-113	60-500037-7	2	
-114	60-500037-13	2	

BEECHCRAFT
DUKE 860
ILLUSTRATED PARTS CATALOG



VIEW A

B60-241-13

B E E C H C R A F T
DUKE B60
I L L U S T R A T E D P A R T S C A T A L O G

GAMA/ATA CODE & INDEX NO.	PART NO.	DESCRIPTION	UNITS PER ASSY	USABLE ON CODE
		1 2 3 4 5 6 7		
00-01 -115	60-950027-7	. . EXHAUST STACK ASSY/SEE CHAPTER 78-10-10 . . FOR COMPONENTS AND SUPPORT INSTALLATION	1	
-116	NO NUMBER	. . ENGINE DRAINS/SEE CHAPTER 71-70-20/	NP	
	R LW16782-2	. . DIPSTICK,OIL QUANTITY LH AND RH	2	
-117	60-910022-635	. COWL FLAP ASSY/SEE CHAPTER 71-10-10/. /ATTACHING PARTS/	1	
-118	130909818	. BOLT/COWL FLAP HINGE/	2	
	AN960-10	. WASHER.	2	
	130909N6	. NUT,CASTELLATED	2	
	MS24665-132	. PIN,COTTER.	2	
-119	60-910021-639	. COWLING ASSEMBLY/SEE CHAPTER 71-10-10/. /ATTACHING PARTS/	1	
	AN509-10R8	. SCREW	32	
	AN509-10R9	. SCREW	4	
-120	60-960000-7	. PROPELLER INSTALLATION/SEE CHAPTER 61/.	NP	
	60-910049-1	. SHIELD,FUEL LINE. /ATTACHING PARTS/	1	
	130909814	. BOLT.	2	
	130909812	. BOLT.	3	
	AN960-10	. WASHER.	5	
-121	60-910024-609	. BOX ASSY,INDUCTION AIR/SEE CHAPTER 71-60-20/. /ATTACHING PARTS/	1	
	130909814	. BOLT.	6	
	AN960-10	. WASHER.	6	
	60-590020-1	BAFFLE ASSY,WINTER OIL COOLER /ATTACHING PARTS/	1	
	130909812	BOLT.	2	
	AN960PD10	WASHER.	2	
	MS21047L3K	NUTPLATE.	2	
	60-590020-3	. BAFFLE,OIL COOLER	1	
	60-590020-5	. RUBBER PAD.	1	
	60-590021-3	. DECAL,OIL COOLER BAFFLE	1	

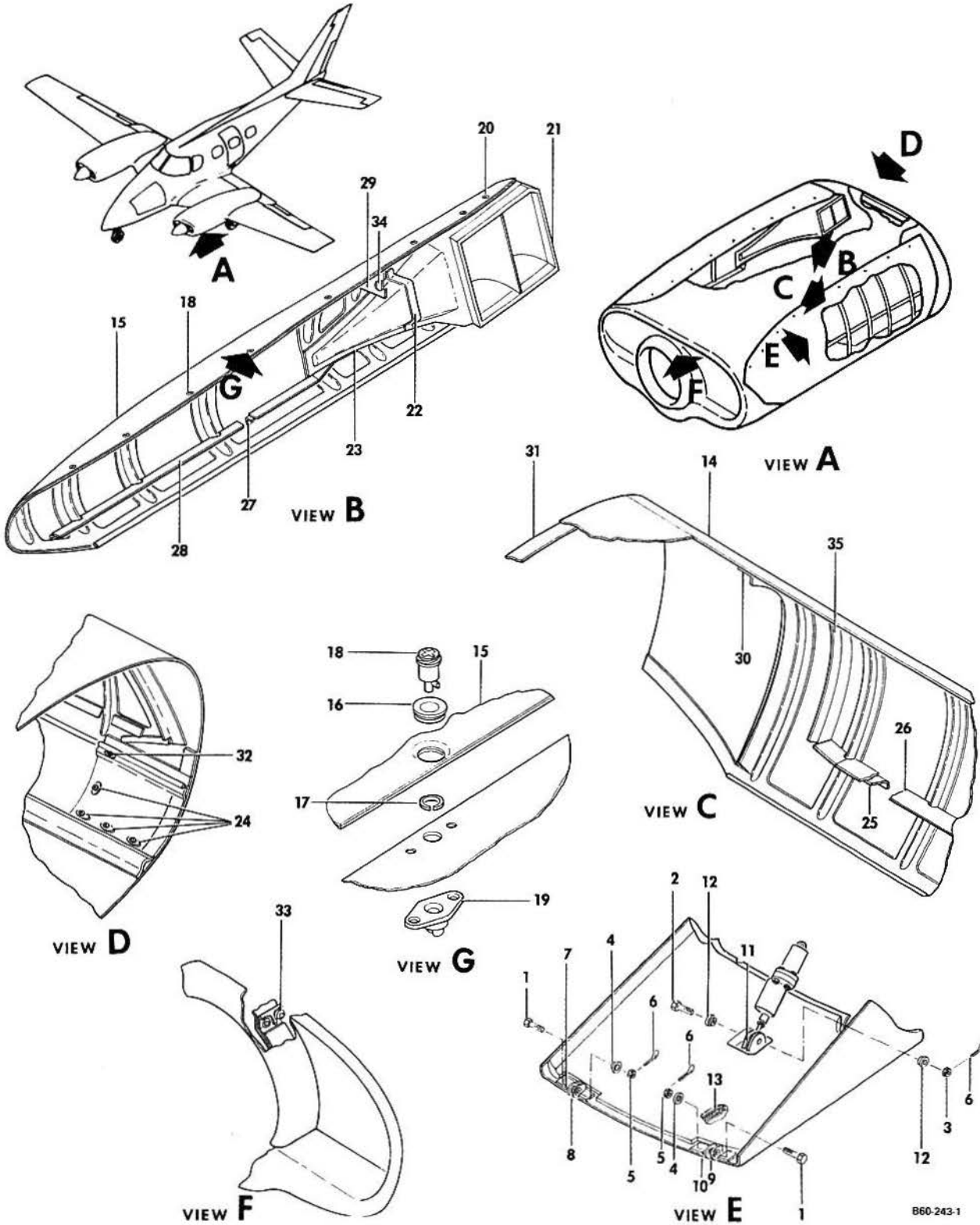
CODES OF EFFECTIVITY

1	P-247 THRU P-426	2	P-427 THRU P-429
	P-430		P-431 THRU P-433
	P-434 THRU P-465		P-466 AND AFTER
3	P-247 THRU P-462	4	P-463 AND AFTER
5	P-247 THRU P-551	6	P-552 AND AFTER
7	P-247 THRU P-508	8	P-509 AND AFTER

BEECHCRAFT
DUKE B60
ILLUSTRATED PARTS CATALOG

71-10-10
ENGINE COWLING

BEECHCRAFT
DUKE 860
ILLUSTRATED PARTS CATALOG



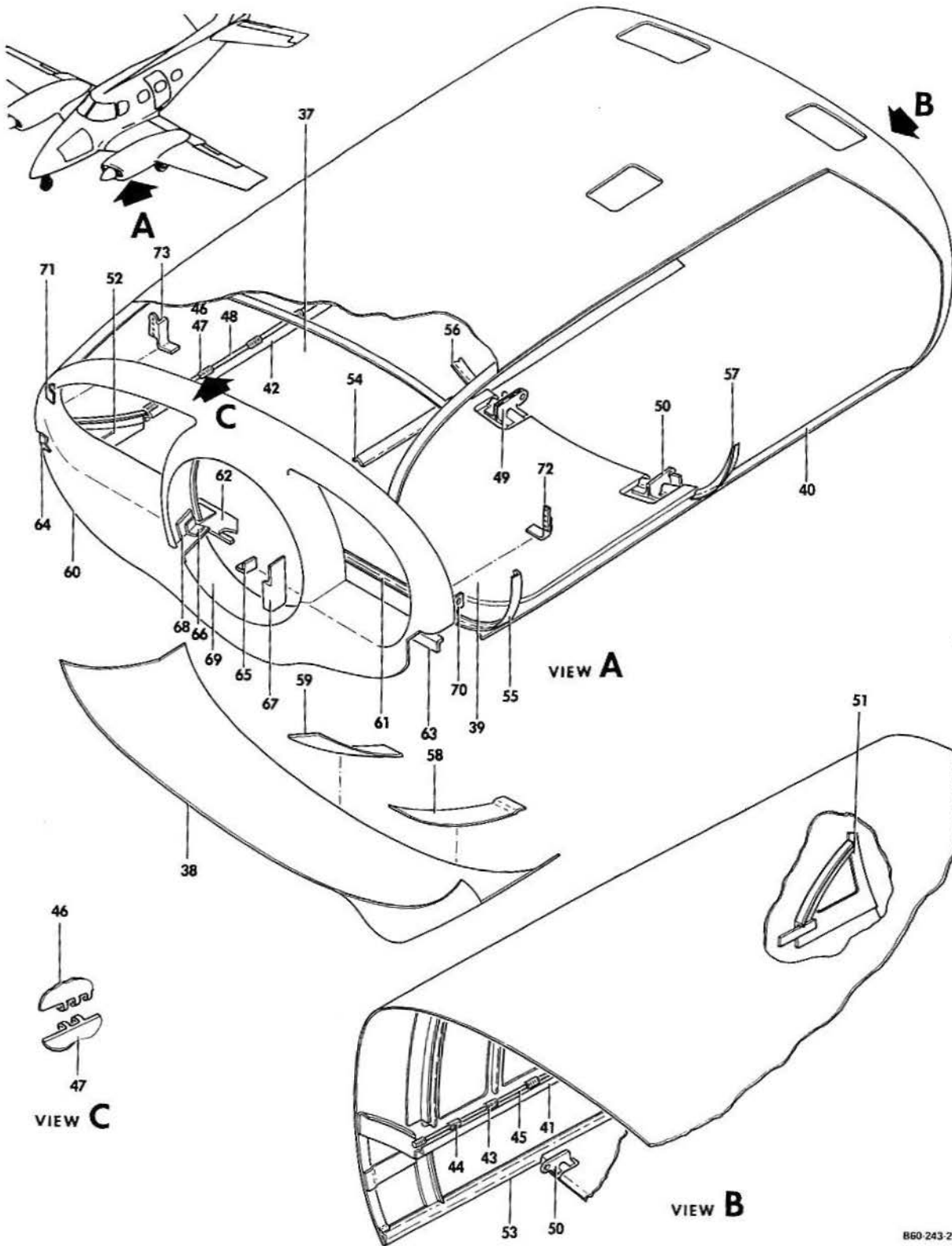
B60-243-1

B E E C H C R A F T
DUKE B60
I L L U S T R A T E D P A R T S C A T A L O G

GAMA/ATA CODE & INDEX NO.	PART NO.	DESCRIPTION							UNITS PER ASSY	USABLE ON CODE
		1	2	3	4	5	6	7		
10-10	60-910021-639	COWLING ASSY,ENGINE							1	
		/ATTACHING PARTS/								
	AN509-10R8	SCREW							32	
	AN509-10R9	SCREW							4	
	60-910022-635	. DOOR ASSY,COWL FLAP							1	
		/ATTACHING PARTS/								
- 1	130909B18	. BOLT							2	
- 2	AN23-13	. BOLT,CLEVIS							1	
- 3	130909N15	. NUT							1	
- 4	AN960-10	. WASHER							2	
- 5	130909N6	. NUT							2	
- 6	MS24665-132	. PIN,COTTER							3	

- 7	60-910022-55	. HINGE							1	
- 8	60-910022-56	. HINGE							1	
- 9	60-910022-57	. HINGE							1	
- 10	60-910022-56	. HINGE							1	
- 11	60-910022-35	. CLIP,ACTUATOR SUPPORT							2	
- 12	NAS77-3-12	. BUSHING							2	
- 13	60-910022-629	. BOND ASSY							1	
- 14	60-910021-609	. DOOR ASSY,COWL LH							1	
- 15	60-910021-611	. DOOR ASSY,COWL RH							1	
- 16	4002G	. GROMMET							16	
- 17	R4G	. RING,SNAP							16	
- 18	40S5-2	. STUD							4	
- 19	214-16D	. RECEPTCLE							16	
	40R8-16-1	. SPACER							14	
- 20	40S5-3	. STUD							23	
	27S3-4	. STUD							5	
- 21	60-910062-31	. DUCT ASSY,COMBUSTION AIR INTAKE/RH DOOR ONLY/ /SUPERSEDES BOTH 60-910062-1 AND 60-910062-15 DUCT ASSY/							1	
	60-910062-33	. WELD ASSY							1	
	60-910062-29	. SEAL							1	
	60-910055-21	. VANE ASSY							1	
	MS35206-244	. SCREW							4	
	AN960-8	. WASHER							4	
	MS21042-L08	. NUT							4	
- 22	60-910021-149	. STRIP							1	
- 23	60-910021-151	. STRIP							1	
- 24	NAS1024A3K	. NUT,PLATE							4	
	60-910021-621	. SEAL ASSY							1	
- 25	60-910021-79	. STRIP							1	
- 26	60-910021-81	. SEAL							1	
	60-910021-622	. SEAL ASSY							1	
- 27	60-910021-83	. STRIP							1	
- 28	60-910021-85	. SEAL							1	
- 29	60-910021-257	. SEAL							1	
- 30	60-910021-297	. ANGLE							1	
- 31	60-910021-251	. DOUBLER							1	
- 32	NAS1023A3K	. NUT							1	
- 33	MS27039-1-09	. SCREW							8	
- 34	60-910021-127	. BAFFLE							1	
- 35	60-910021-109	. ANGLE							1	
	60-910021-409	. INSULATION,AIR INTAKE DUCT AFT.							1	
	60-910021-411	. INSULATION,AIR INTAKE DUCT FWD.							1	
- 36		. DELETED								

BEECHCRAFT
DUKE B60
ILLUSTRATED PARTS CATALOG

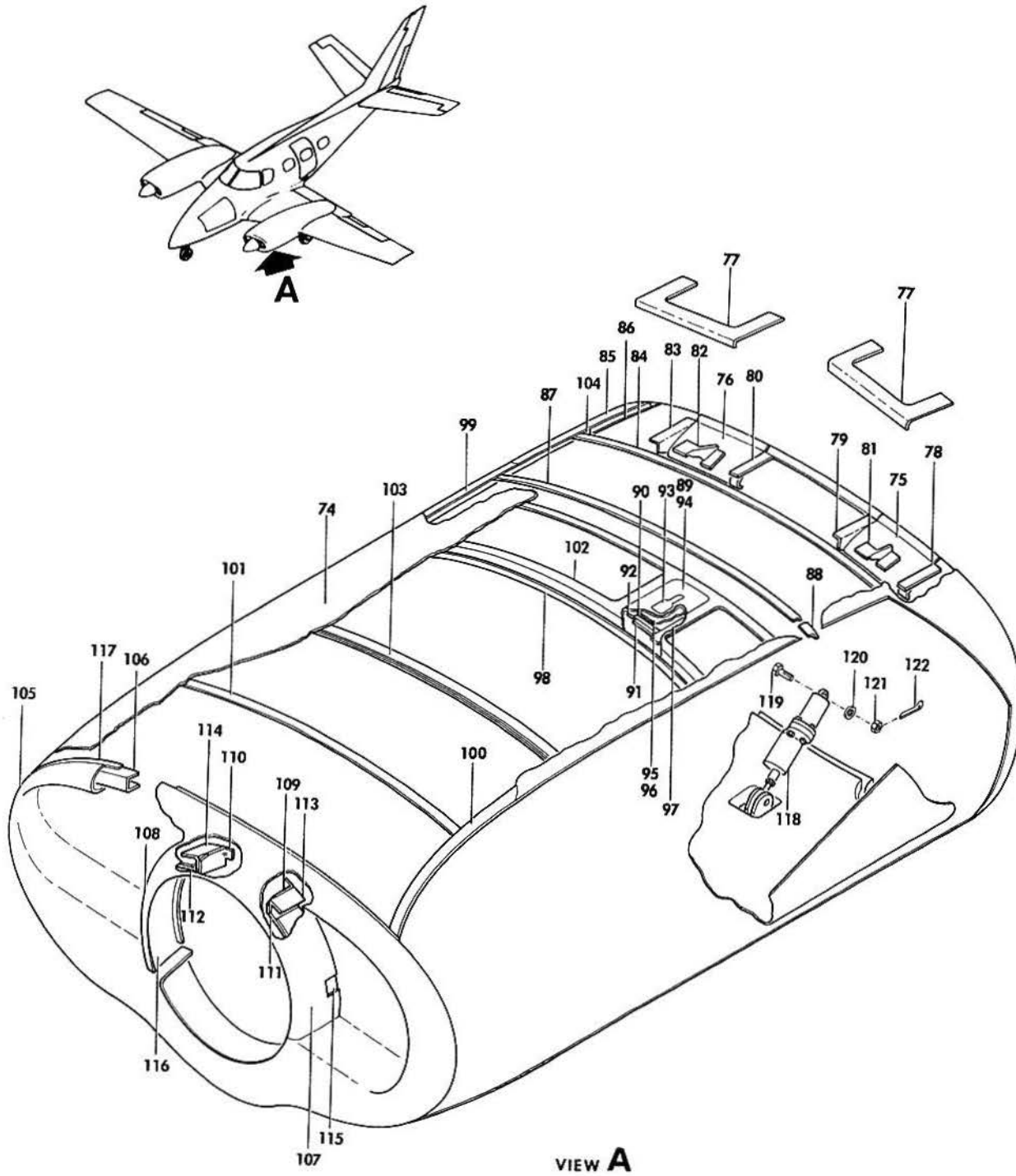


B60-243-2

B E E C H C R A F T
DUKE 860
I L L U S T R A T E D P A R T S C A T A L O G

GAMA/ATA CODE & INDEX NO.	PART NO.	DESCRIPTION							UNITS PER ASSY	USABLE ON CODE
		1	2	3	4	5	6	7		
10-10	60-910021-629	. . .	COWL ASSY, LOWER	1	
- 37	R 60-910021-309	. . .	SKIN, RH SIDE	1	
- 38	60-910021-395	. . .	SKIN, FORWARD LOWER	1	
- 39	R 60-910021-339	. . .	BOND ASSY, LOWER	1	
- 40	R 60-910021-385	. . .	SKIN, LOWER SIDE LH/FWD/	1	
	R 60-910021-401	. . .	SKIN, LWK LH SIDE AFT/WITH CUT-OUT/	1	
	R 60-910021-403	. . .	DOUBLER, LWR AFT SKIN	1	
	R 60-910021-175	. . .	SKIN, LWK RH SIDE	1	
- 41	60-910021-17	. . .	STRINGER	1	
- 42	60-910021-189	. . .	STRINGER	1	
- 43	60-910021-19	. . .	HINGE, HALF	1	
- 44	60-910021-21	. . .	HINGE, HALF	1	
- 45	60-910021-23	. . .	PIN, HINGE	1	
- 46	60-910021-183	. . .	HINGE, HALF	1	
- 47	60-910021-185	. . .	HINGE, HALF	1	
- 48	60-910021-187	. . .	PIN, HINGE	1	
- 49	60-910021-351	. . .	HINGE ASSY	1	
- 50	60-910021-352	. . .	HINGE ASSY	1	
- 51	60-910021-295	. . .	DOUBLER, SKIN ATTACHING	1	
- 52	60-910021-296	. . .	DOUBLER, SKIN ATTACHING	1	
- 53	60-910021-323	. . .	STIFFENER, SKIN	1	
- 54	60-910021-325	. . .	STIFFENER	1	
- 55	60-910021-93	. . .	DOUBLER	1	
- 56	60-910021-46	. . .	STIFFENER	1	
- 57	60-910021-45	. . .	STIFFENER	1	
- 58	60-910021-95	. . .	DOUBLER	1	
- 59	60-910021-103	. . .	DOUBLER	1	
	60-910021-603	. . .	NOSE BUG	1	
- 60	60-910021-91	. . .	NOSE BUG, LOWER	1	
- 61	60-910021-275	. . .	SEAL	1	
- 62	60-910021-121	. . .	STRIP	1	
- 63	60-910021-119	. . .	ANGLE, LEFT	1	
- 64	60-910021-120	. . .	ANGLE, RIGHT	1	
- 65	60-910021-267	. . .	ANGLE	1	
- 66	60-910021-268	. . .	ANGLE	1	
- 67	60-910021-279	. . .	GUSSET	1	
- 68	60-910021-280	. . .	GUSSET	1	
- 69	60-910021-75	. . .	BULKHEAD	1	
- 70	60-910021-263	. . .	CHANNEL	1	
- 71	60-910021-264	. . .	CHANNEL	1	
- 72	60-910021-277	. . .	DOUBLER	1	
- 73	60-910021-278	. . .	DOUBLER	1	

BEECHCRAFT
DUKE B60
ILLUSTRATED PARTS CATALOG



VIEW A

B60-243.3

B E E C H C R A F T
DUKE B60
I L L U S T R A T E D P A R T S C A T A L O G

GAMA/ATA CODE & INDEX NO.	PART NO.	DESCRIPTION							UNITS PER ASSY	USABLE ON CODE
		1	2	3	4	5	6	7		
10-10	60-910021-605	1	
- 74	60-910021-271	1	
- 75	60-910021-391	1	
- 76	60-910021-392	1	
- 77	60-910021-195	2	
- 78	60-910021-389	1	
- 79	60-910021-387	1	
- 80	60-910021-157	1	
- 81	60-910021-259	1	
- 82	60-910021-260	1	
- 83	60-910021-390	1	
- 84	60-910021-233	1	
- 85	60-910021-87	1	
- 86	60-910021-59	1	
- 87	60-910021-5	1	
- 88	60-910021-111	2	
- 89	60-910044-1	1	
- 90	60-910044-9	1	
- 91	60-910044-11	1	
- 92	105774C-ZE00208	1	
- 93	H5000-2-032-040	1	
- 94	60-910044-3	1	
- 95	60-910044-5	1	
- 96	60-910044-7	1	
- 97	60-910021-393	1	
- 98	60-910021-231	1	
- 99	60-910021-14	1	
-100	60-910021-13	1	
-101	60-910021-11	1	
-102	60-910021-269	1	
-103	60-910021-9	1	
-104	108424-4	4	
	60-910021-601	1	
-105	60-910021-33	1	
-106	60-910021-35	1	
-107	60-910021-225	1	
-108	60-910021-226	1	
-109	60-910021-273	1	
-110	60-910021-274	1	
-111	60-910021-191	1	
-112	60-910021-193	1	
-113	60-910021-61	1	
-114	60-910021-62	1	
-115	60-910021-223	1	
-116	60-910021-224	1	
-117	60-910021-73	1	
-118	96-380021-15	1	1
	96-380021-29	1	2
	102-389013-1	1	
-119	AN3-12	2	
-120	AN960-10L	2	
-121	130909N6	2	
-122	MS24665-132	2	

CODES OF EFFECTIVITY

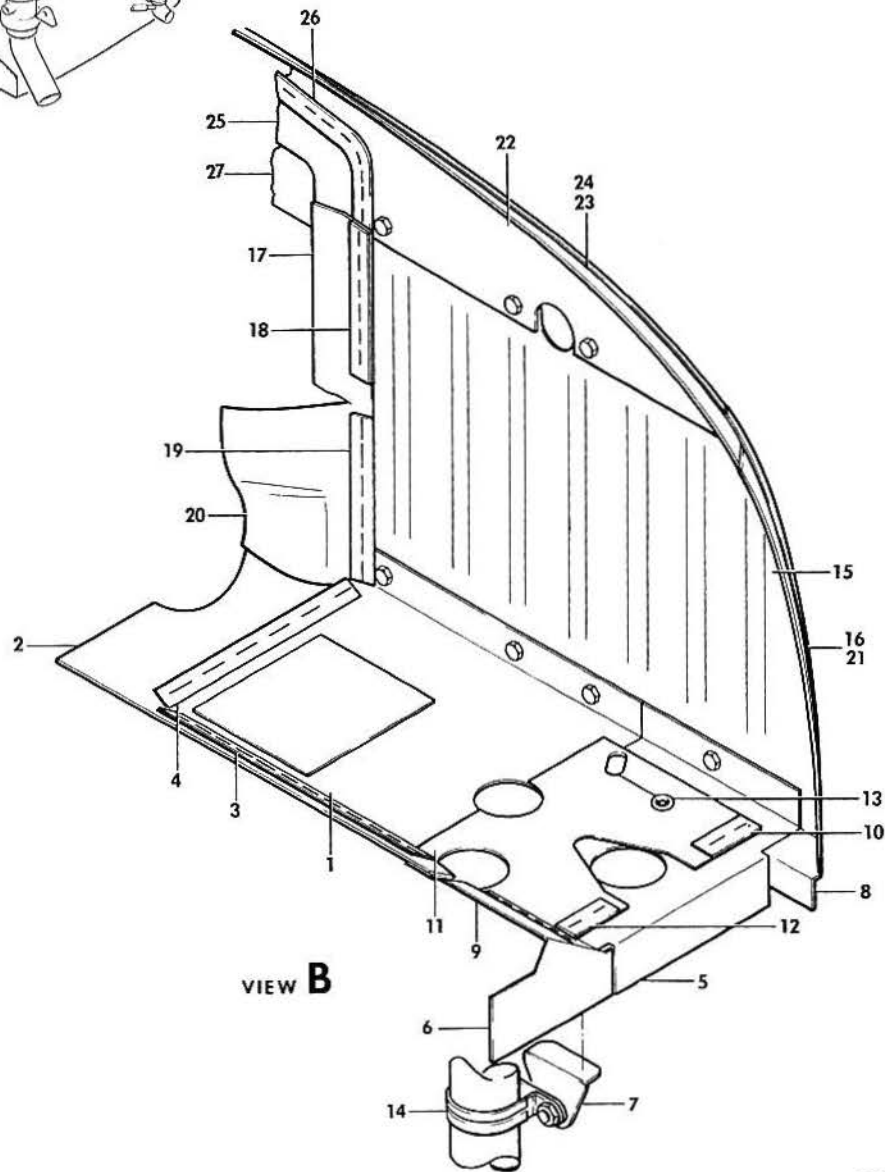
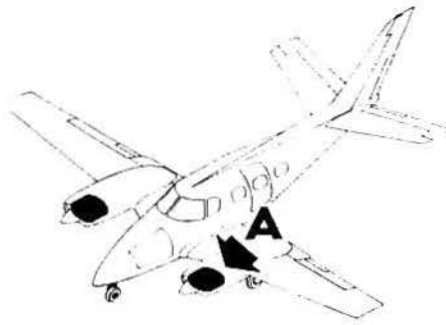
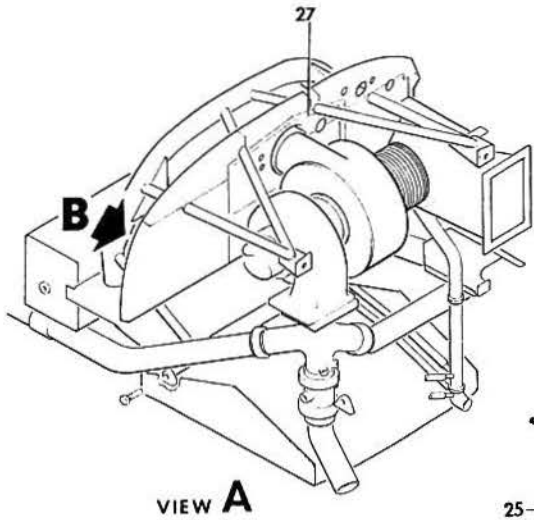
1 P-247 THRU P-441 2 P-442 AND AFTER

END

B E E C H C R A F T
DUKE 660
I L L U S T R A T E D P A R T S C A T A L O G

71-60-10
ENGINE BAFFLES

BEECHCRAFT
DUKE B60
ILLUSTRATED PARTS CATALOG

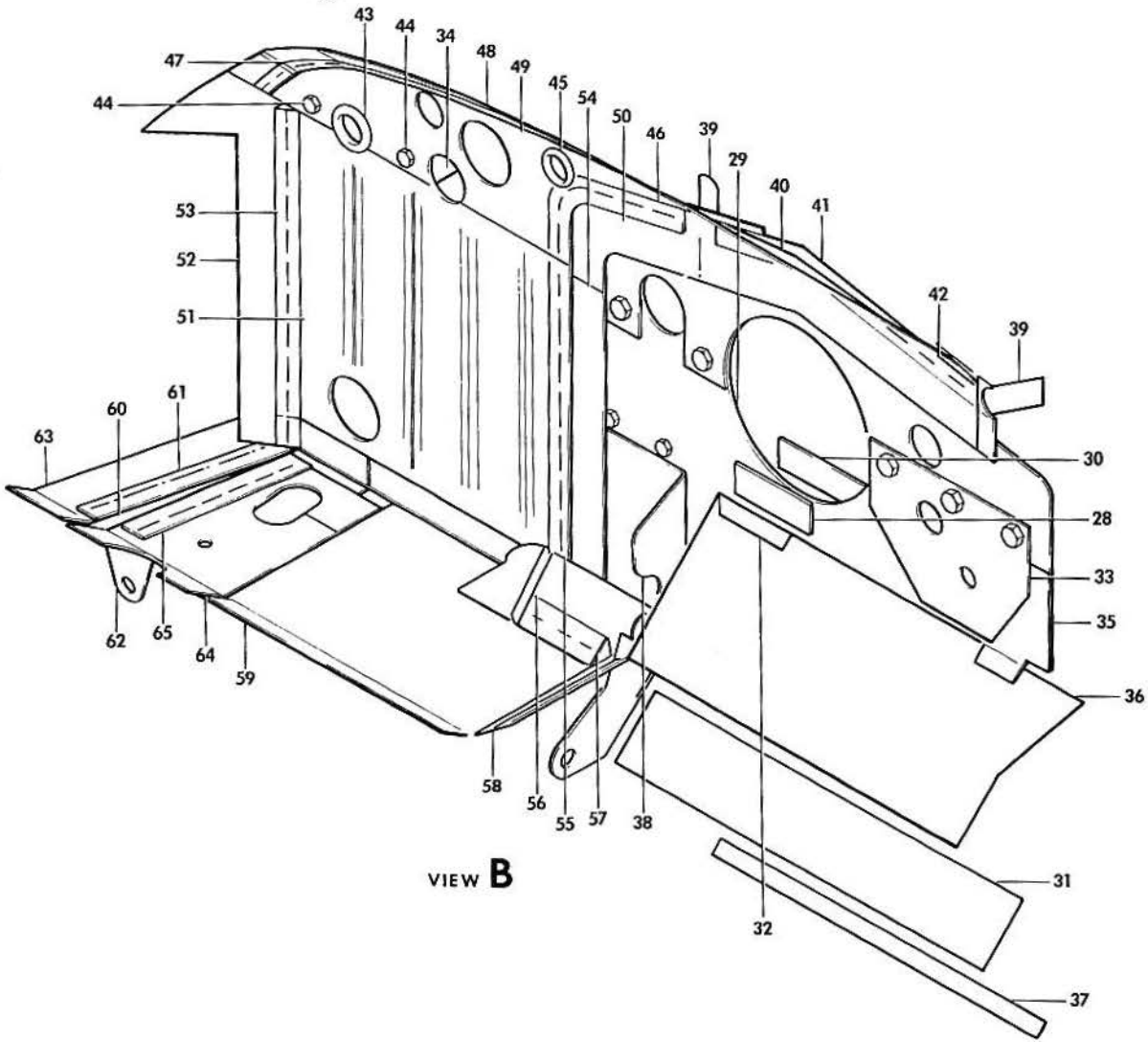
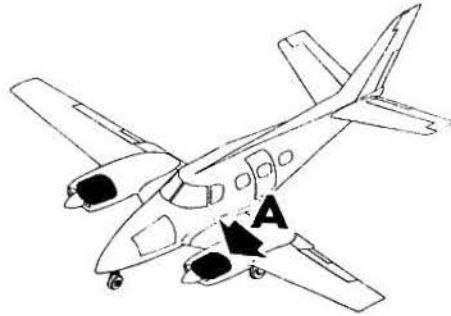
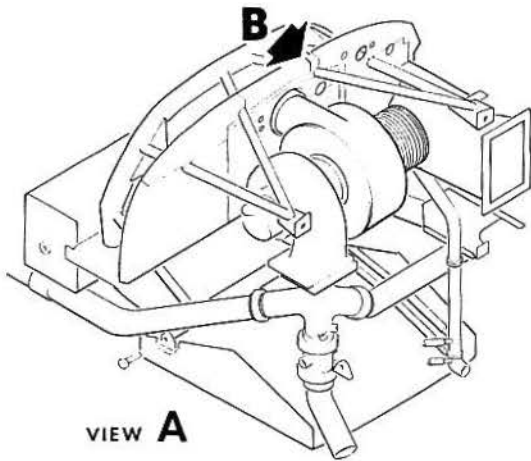


860-244-3

B E E C H C R A F T
DUKE B60
I L L U S T R A T E D P A R T S C A T A L O G

GAMA/ATA CODE & INDEX NO.	PART NO.	DESCRIPTION							UNITS PER ASSY	USABLE ON CODE
		1	2	3	4	5	6	7		
60-10	60-910020-129	BAFFLE	INSTALLATION,	ENGINE.	NP	
	60-910020-601	. BAFFLE	ASSEMBLY/WITH	SURFACE	DEICER/.	.	.	.	1	
	60-910020-125	. BAFFLE	ASSEMBLY/LESS	SURFACE	DEICER/.	.	.	.	1	
- 1	60-910020-127	. . BAFFLE.	1	
- 2	60-910020-183	. . SEAL.	1	
- 3	60-910020-93	. . STRIP	1	
- 4	60-910020-115	. . STRIP	1	
	60-910020-187	. . COVER/LESS	SURFACE	DEICER/.	1	
	NAS696A3	. . NUTPLATE.	2	
	60-910020-189	. BAFFLE	ASSY	1	
- 5	60-910020-197	. . BAFFLE.	1	
- 6	60-910020-179	. . SEAL.	1	
- 7	60-910020-69	. . ANGLE	1	
- 8	60-910020-71	. . ANGLE	1	
- 9	60-910020-95	. . STRIP	1	
- 10	60-910020-195	. . STRIP	1	
- 11	60-910020-191	. . SEAL.	1	
- 12	60-910020-193	. . STRIP	1	
- 13	MS35489-35	. . GROMMET	1	
- 14	AN742024	. CLAMP	1	
		/ATTACHING PARTS/								
	AN520-10R6	. SCREW	1	
	AN960C10L	. WASHER	1	
	130909N29	. NUT	1	
		*								
	K 60-910020-3	. BAFFLE	ASSY	1	1
	R 60-910020-215	. BAFFLE	ASSY	1	2
- 15	K 60-910020-177	. . BAFFLE.	1	1
	K 60-910020-217	. . BAFFLE.	1	2
- 16	60-910020-45	. . SEAL.	1	
- 17	60-910020-47	. . SEAL.	1	
- 18	60-910020-89	. . STRIP	1	
- 19	60-910020-91	. . STRIP	1	
- 20	60-910020-49	. . SEAL.	1	
- 21	60-910020-87	. . STRIP	1	
	NAS696A3	. . NUTPLATE.	AR	
	60-910020-1	. BAFFLE	ASSY	1	
		/ATTACHING PARTS/								
	130909B12	. BOLT.	4	
	AN960-10L	. WASHER	4	
	130909N29	. NUT	4	
		*								
- 22	60-910020-21	. . BAFFLE.	1	
- 23	60-910020-85	. . STRIP	1	
- 24	60-910020-43	. . SEAL.	1	
- 25	60-910020-77	. . SEAL.	1	
- 26	60-910020-113	. . STRIP	1	
	60-910020-155	. BAFFLE	ASSY	1	
		/ATTACHING PARTS/								
	130909B12	. BOLT.	5	
	AN960-10L	. WASHER	5	
		*								
- 27	60-910020-157	. . BAFFLE.	1	
	NAS969A3	. . NUTPLATE.	5	

BEECHCRAFT
DUKE B60
ILLUSTRATED PARTS CATALOG



B60-244.4

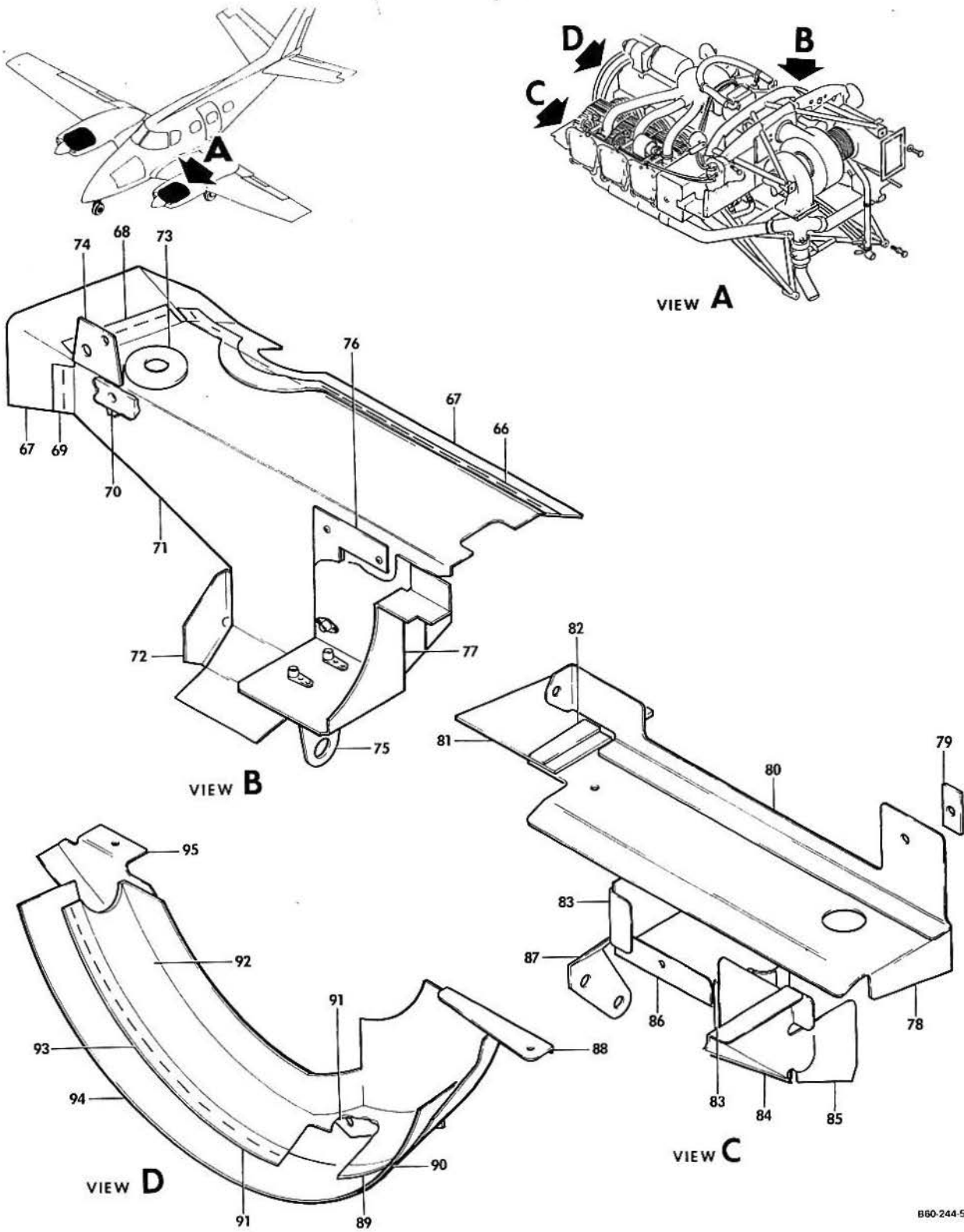
B E E C H C R A F T
DUKE B60
I L L U S T R A T E D P A R T S C A T A L O G

GAMA/ATA CODE & INDEX NO.	PART NO.	1	2	3	4	5	6	7	DESCRIPTION	UNITS PER ASSY	USABLE ON CODE	
60-10 - 28	60-910020-175	CLIP.	1		
	60-910020-137	BAFFLE ASSY	1		
		/ATTACHING PARTS/										
	130909B12	BOLT.	4		
	AN960-10L	WASHER.	4		

- 29	60-910020-139	BAFFLE.	1		
- 30	60-910020-141	CLIP.	1		
- 31	60-910020-143	SEAL.	1		
- 32	60-910020-159	STRIP	1		
	NAS696A3	NUTPLATE.	1		
- 33	60-910020-199	SEAL.	1		
- 34	60-910053	CLIP.	2		
	60-910020-11	BAFFLE ASSY	1		
- 35	60-910020-31	BAFFLE.	1		
- 36	60-910020-57	SEAL.	1		
- 37	60-910020-99	STRIP	1		
	NAS696A3	NUTPLATE.	1		
- 38	60-910033	BAFFLE ASSY,WELDED.	1		
	60-910020-79	BAFFLE ASSY	1		
- 39	60-910020-83	CLIP.	2		
- 40	60-910020-55	SEAL.	1		
- 41	60-910020-81	BAFFLE.	1		
- 42	60-910020-97	STRIP	1		
- 43	MS35489-22	GROMMET	1		
- 44	130909B12	BOLT,GROUNDING.	2		
- 45	G51H-A	GROMMET	AR		
	60-910020-13	BAFFLE ASSY	1		
		/ATTACHING PARTS/										
	130909B12	BOLT.	AR		
	AN960-10L	WASHER.	AR		

- 46	60-910020-111	STRIP	1		
- 47	60-910020-101	STRIP	1		
- 48	60-910020-59	SEAL.	1		
- 49	60-910020-33	BAFFLE.	1		
- 50	60-910020-75	SEAL.	1		
	NAS696A3	NUTPLATE.	2		
	60-910020-15	BAFFLE ASSY	1		
- 51	60-910020-35	BAFFLE.	1		
- 52	60-910020-161	SEAL.	1		
- 53	60-910020-105	STRIP	1		
- 54	60-910020-61	SEAL.	1		
- 55	60-910020-103	STRIP	1		
	60-910020-17	BAFFLE ASSY	1		
- 56	60-910020-181	SEAL.	1		
- 57	60-910020-117	STRIP	1		
- 58	60-910020-107	STRIP	1		
- 59	60-910020-37	BAFFLE.	1		
	NAS696A3	NUTPLATE.	2		
	60-910020-19	BAFFLE ASSY	1		
- 60	60-910020-39	BAFFLE.	1		
- 61	60-910020-109	STRIP	1		
- 62	60-910020-69	ANGLE	1		
- 63	60-910020-67	SEAL.	1		
	NAS696A3	NUTPLATE.	3		
- 64	60-910020-169	SEAL.	1		
- 65	60-910020-185	STRIP	1		

BEECHCRAFT
DUKE 860
ILLUSTRATED PARTS CATALOG



B60-244-5

B E E C H C R A F T
DUKE B60
I L L U S T R A T E D P A R T S C A T A L O G

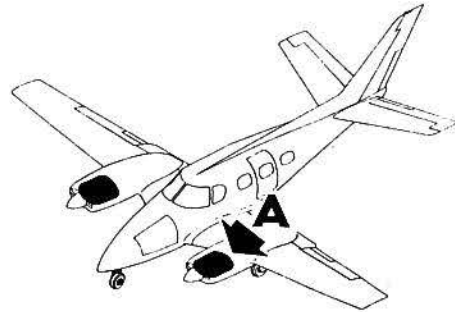
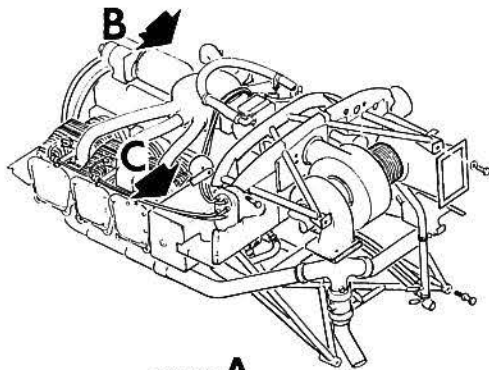
GAMA/ATA CODE & INDEX NO.	PART NO.	DESCRIPTION							UNITS PER ASSY	USABLE ON CODE
		1	2	3	4	5	6	7		
60-10	60-910032-37	. BAFFLE ASSY	1	
	MS35265-79	. /ATTACHING PARTS/		
	AN936A416	. SCREW	1	
		. WASHER	1	

	60-910032-35	. BAFFLE ASSY	1	
- 66	60-910032-15	. . . STRIP	1	
- 67	60-910032-11	. . . SEAL	1	
- 68	60-910032-9	. . . STRIP	1	
- 69	60-910032-13	. . . STRIP	1	
- 70	60-910032-17	. . . DOUBLER	1	
- 71	60-910032-33	. . . BAFFLE	1	
- 72	60-910032-5	. . . END	1	
- 73	MS35489-18	. . . GROMMET	1	
- 74	60-910032-29	. . . ANGLE	1	
- 75	60-910032-7	. . . SUPPORT	1	
		. /ATTACHING PARTS/		
	MS35206-245	. . . SCREW	2	
	AN960-8	. . . WASHER	2	
	NAS696A08	. . . NUTPLATE	2	
	AN515-10R7	. . . SCREW	1	
	AN960-10	. . . WASHER	1	
	NAS697A3	. . . NUTPLATE	1	

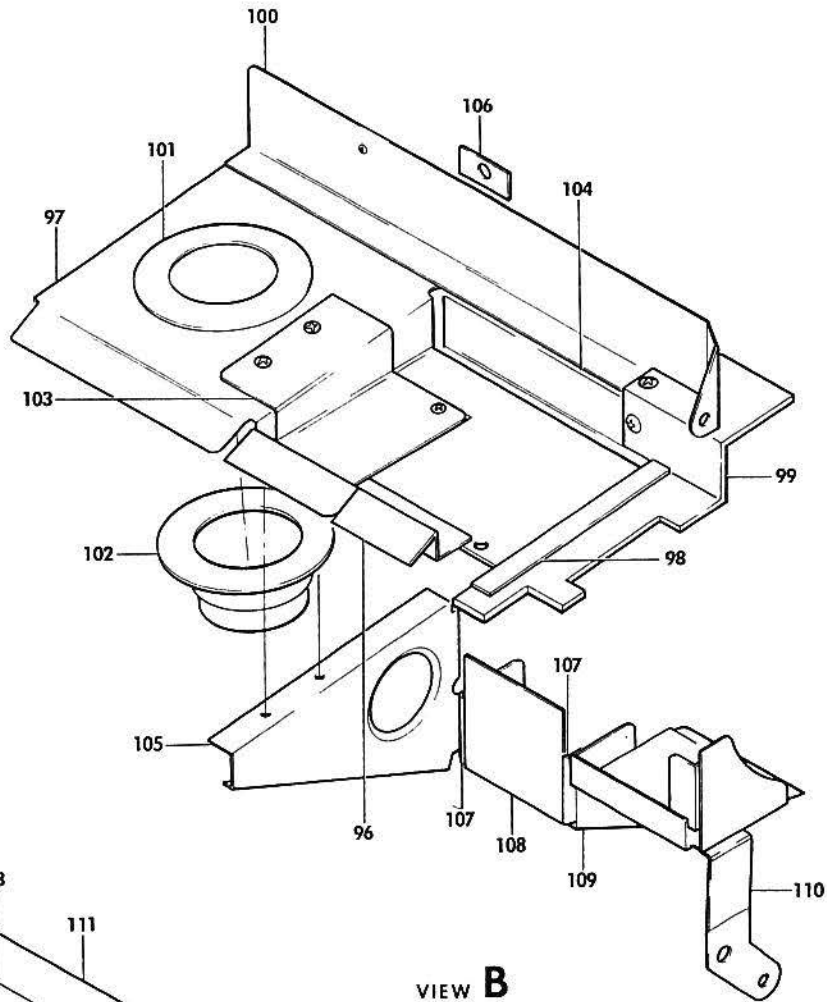
	130909B12	. . . BOLT	1	
- 76	60-910032-31	. . . SPACER	1	
	60-910032-39	. . . BAFFLE ASSY	1	
- 77	60-910032-3	. . . BAFFLE	1	
	60-910032-41	. . . CLIP	1	
	NAS696A08	. . . NUTPLATE	2	
	NAS697A3	. . . NUTPLATE	2	
	6436638	. GASKET,OIL FILTER/USE WHEN FILTER IS	1	
		REMOVED FOR INSTALLATION OF 60-910032-37/								
	60-910027-35	BAFFLE ASSEMBLY	1	
	60-910027-603	. BAFFLE ASSY	1	
		. /ATTACHING PARTS/		
	AN3-3/M/	. BOLT	2	

- 78	60-910027-31	. . . BAFFLE, LOWER	1	
- 79	60-910027-5	. . . DOUBLER	1	
- 80	60-910027-3	. . . BAFFLE, UPPER	1	
- 81	60-910027-11	. . . SEAL	1	
- 82	60-910027-9	. . . STRIP	1	
- 83	60-910027-17	. . . ANGLE	3	
- 84	60-910027-15	. . . STIFFENER	1	
- 85	60-910027-19	. . . BAFFLE	1	
- 86	60-910027-21	. . . BAFFLE	1	
	NAS696A3	. . . NUTPLATE	3	
- 87	60-910027-13	. . . SUPPORT	1	
	60-910030-41	BAFFLE ASSEMBLY	1	
- 88	60-910030-3	. . . ANGLE	1	
- 89	60-910030-25	. . . STRIP	1	
- 90	60-910030-39	. . . SEAL	1	
- 91	60-910030-13	. . . ANGLE	1	
- 92	60-910030-43	. . . BAFFLE	1	
- 93	60-910030-17	. . . STRIP	1	
- 94	60-910030-37	. . . SEAL	1	
- 95	60-910030-35	. . . BRACKET	1	
	NAS696A3	. . . NUTPLATE	2	

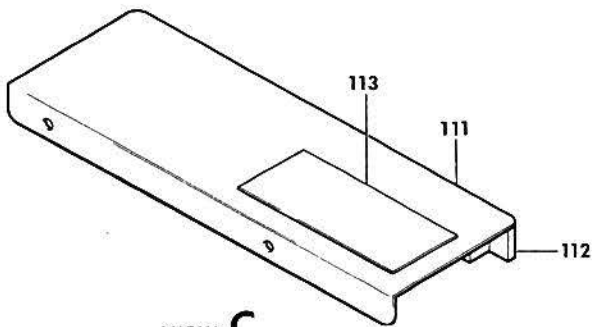
BEECHCRAFT
DUKE B60
ILLUSTRATED PARTS CATALOG



VIEW A



VIEW B



VIEW C

B60-244-6

B E E C H C R A F T
DUKE 860
I L L U S T R A T E D P A R T S C A T A L O G

GAMA/ATA CODE & INDEX NO.	PART NO.	1 2 3 4 5 6 7	DESCRIPTION	UNITS PER ASSY	USABLE ON CODE
60-10	60-910038-41		BAFFLE ASSEMBLY	1	
	60-910038-605		. BAFFLE ASSY	1	
	AN3-3		. BOLT.	2	
			-----*		
- 96	61-910038-31		. . CLIP.	1	
- 97	60-910038-39		. . BAFFLE.	1	
- 98	60-910038-9		. . STRIP	1	
- 99	60-910038-11		. . SEAL.	1	
-100	60-910038-3		. . BAFFLE,UPPER.	1	
-101	60-910038-25		. . SCREEN.	1	
-102	50-555012		. . COLLAR.	1	
-103	60-910038-43		. . COVER	1	
			/ATTACHING PARTS/		
	AN520-1032		. . SCREW	4	
	NAS688A3		. . NUTPLATE.	3	
	NAS698A3		. . NUTPLATE.	1	
			-----*		
-104	60-910038-21		. . ANGLE	1	
-105	60-910038-15		. . STIFFENER	1	
-106	60-910038-5		. . DOUBLER	1	
-107	60-910027-17		. . ANGLE	1	
-108	60-910038-27		. . BAFFLE.	1	
-109	60-910038-29		. . BAFFLE.	1	
-110	60-910038-13		. . SUPPORT	1	
	60-590020-1		BAFFLE ASSY,OIL COOLER/FOR COLD WEATHER	1	
			OPERATIUN/		
	130909812		. . BOLT.	2	
	AN960-PD10		. . WASHER.	2	
-111	60-590020-3		. . BAFFLE.	1	
-112	60-590020-5		. . RUBBER.	1	
-113	60-590021-1		. . PLACARD	1	

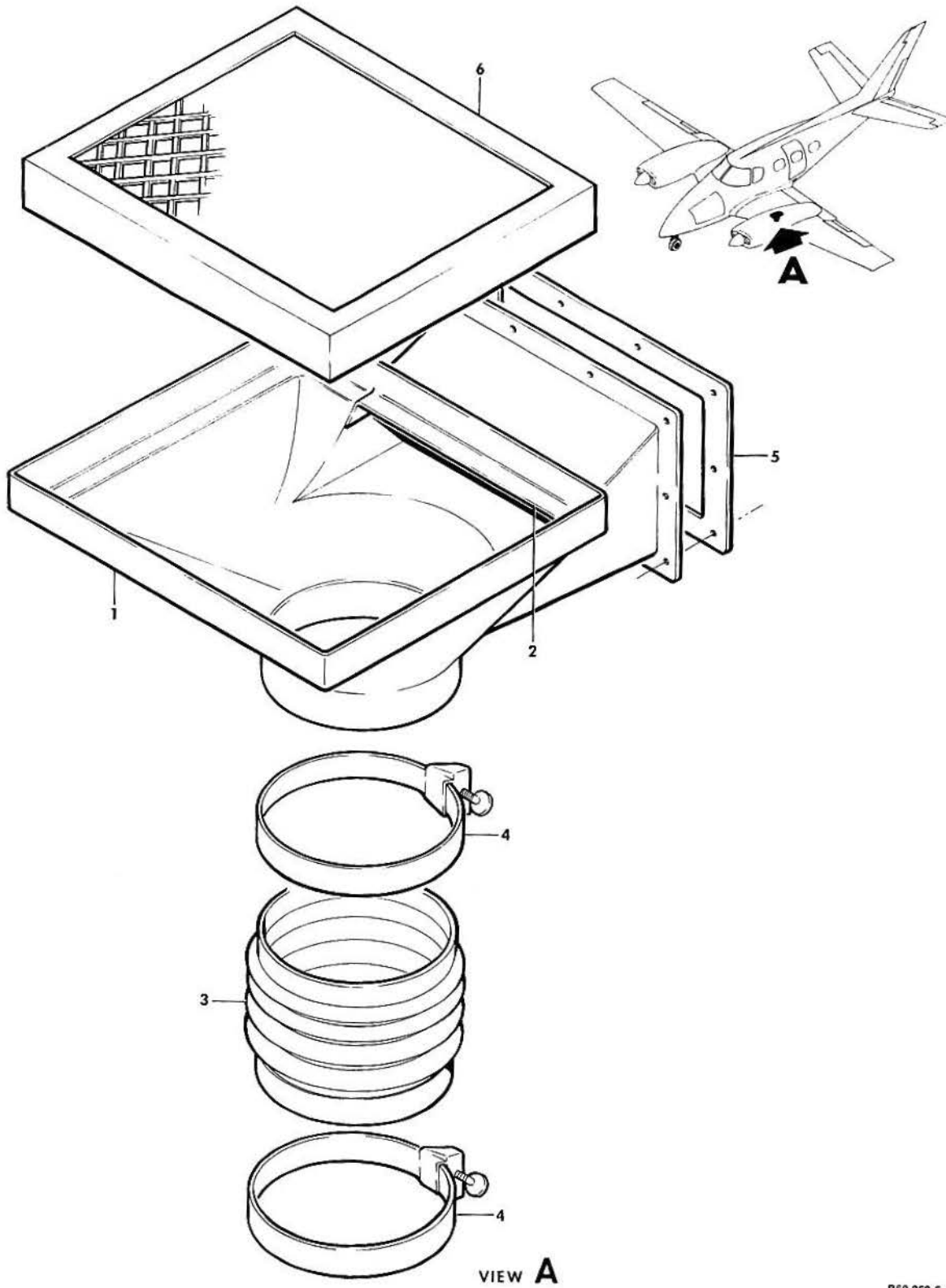
CODES OF EFFECTIVITY

1 P-247 THRU P-508 2 P-509 AND AFTER

BEECHCRAFT
DUKE B60
ILLUSTRATED PARTS CATALOG

71-60-20
INDUCTION AIR BOX ASSEMBLY

BEECHCRAFT
DUKE B60
ILLUSTRATED PARTS CATALOG



B60-258-5

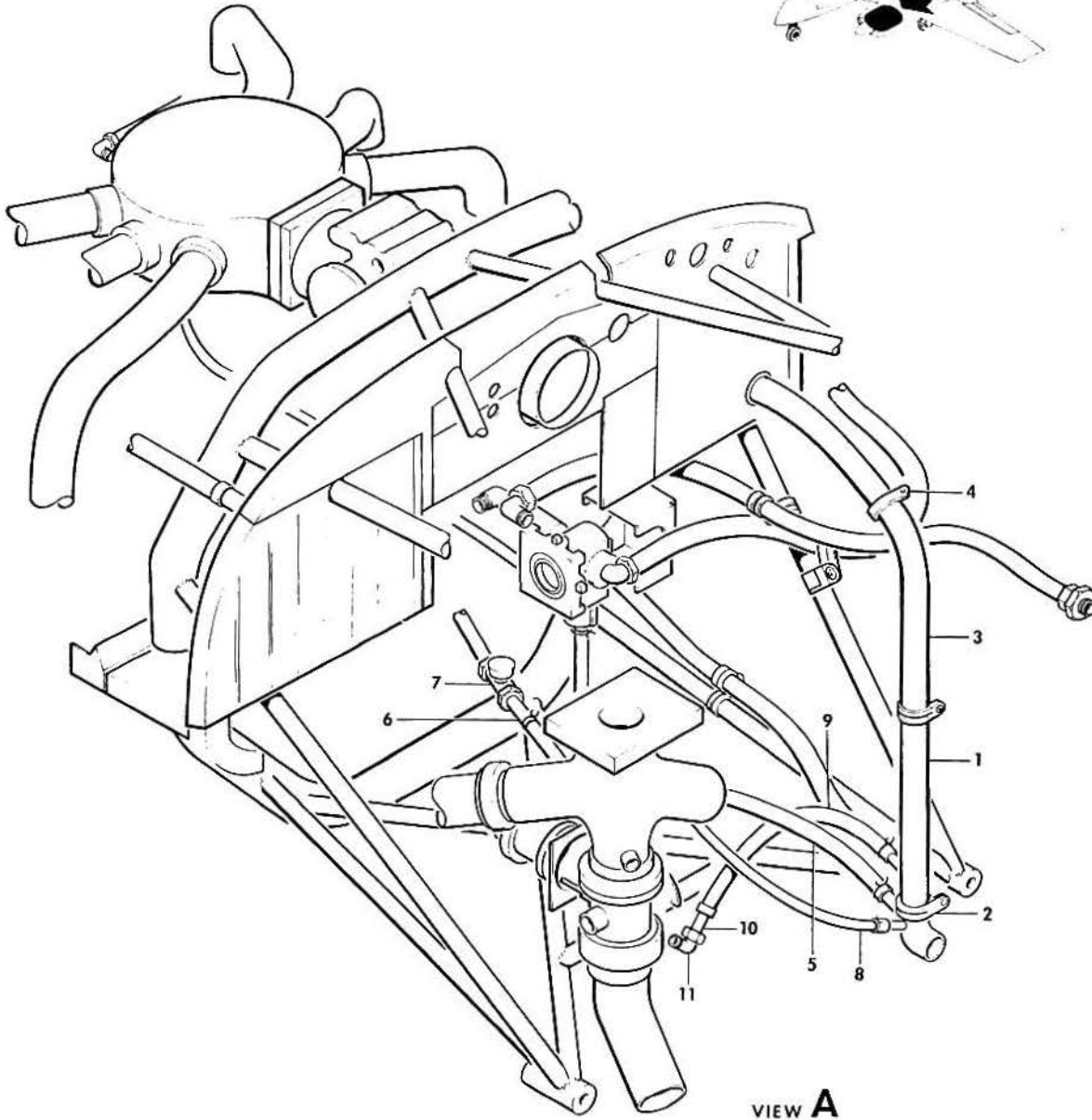
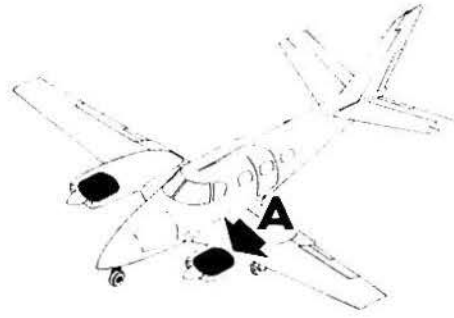
B E E C H C R A F T
DUKE B60
I L L U S T R A T E D P A R T S C A T A L O G

GAMA/ATA CODE & INDEX NO.	PART NG.	DESCRIPTION							UNITS PER ASSY	USABLE ON CODE	
		1	2	3	4	5	6	7			
60-20	60-910024-609	BOX ASSY,AIR INDUCTION.	1	
		/ATTACHING PARTS/		
	130909B14	BOLT.	6	
	AN960-10	WASHER.	6	
		-----*									
- 1	60-910024-35	. DUCT.	1	
- 2	60-910024-29	. FLANGE.	1	
- 3	50-389068	DUCT.	1	
		/ATTACHING PARTS/		
- 4	105798-24	CLAMP	2	
		-----*									
- 5	60-910024-7	GASKET.	1	
- 6	50-389070-15	FILTER,DRY AIR.	1	

BEECHCRAFT
DUKE B60
ILLUSTRATED PARTS CATALOG

71-70-20
ENGINE DRAINS

BEECHCRAFT
DUKE B60
ILLUSTRATED PARTS CATALOG



VIEW A

B60-241-15

B E E C H C R A F T
DUKE B60
I L L U S T R A T E D P A R T S C A T A L O G

GAMA/ATA CODE & INDEX NO.	PART NO.	DESCRIPTION							UNITS PER ASSY	USABLE ON CODE
		1	2	3	4	5	6	7		
70-20	NO NUMBER	ENGINE DRAIN INSTALLATION							NP	
- 1	60-910026	. MANIFOLD ASSY,ENGINE OVERBOARD DRAIN.							1	
- 2	AN742D16	. CLAMP,MANIFOLD SUPPORT.							2	
		/ATTACHING PARTS/								
	AN520-10R16	. SCREW							1	
	100696AZC016	. SPACER.							1	

- 3	CDEETS4-1-44-4	. HOSE,CRANKCASE BREATHER DRAIN							1	
		/ATTACHING PARTS/								
- 4	NAS397-20	. CLAMP							2	

- 5	114693-2-02200	. HOSE,FUEL PUMP DRAIN.							1	
		/ATTACHING PARTS/								
	CS6A	. CLAMP							2	

- 6	96-910004-27	. TUBE ASSY,FUEL MANIFOLD DRAIN							1	
- 7	MS20825-4	. TEE							1	
- 8	114693-2-01808	. HOSE,FUEL PUMP DRAIN.							1	
		/ATTACHING PARTS/								
	CS6A	. CLAMP							2	

- 9	114693-2-01800	. HOSE,TURBO CONTROLLER DRAIN							1	
		/ATTACHING PARTS/								
	CS6A	. CLAMP							2	

- 10	60-910001-5	. TUBE ASSY							1	
- 11	4V50X-S	. ELBOW							1	

