

B E E C H C R A F T
DUKE B60
I L L U S T R A T E D P A R T S C A T A L O G

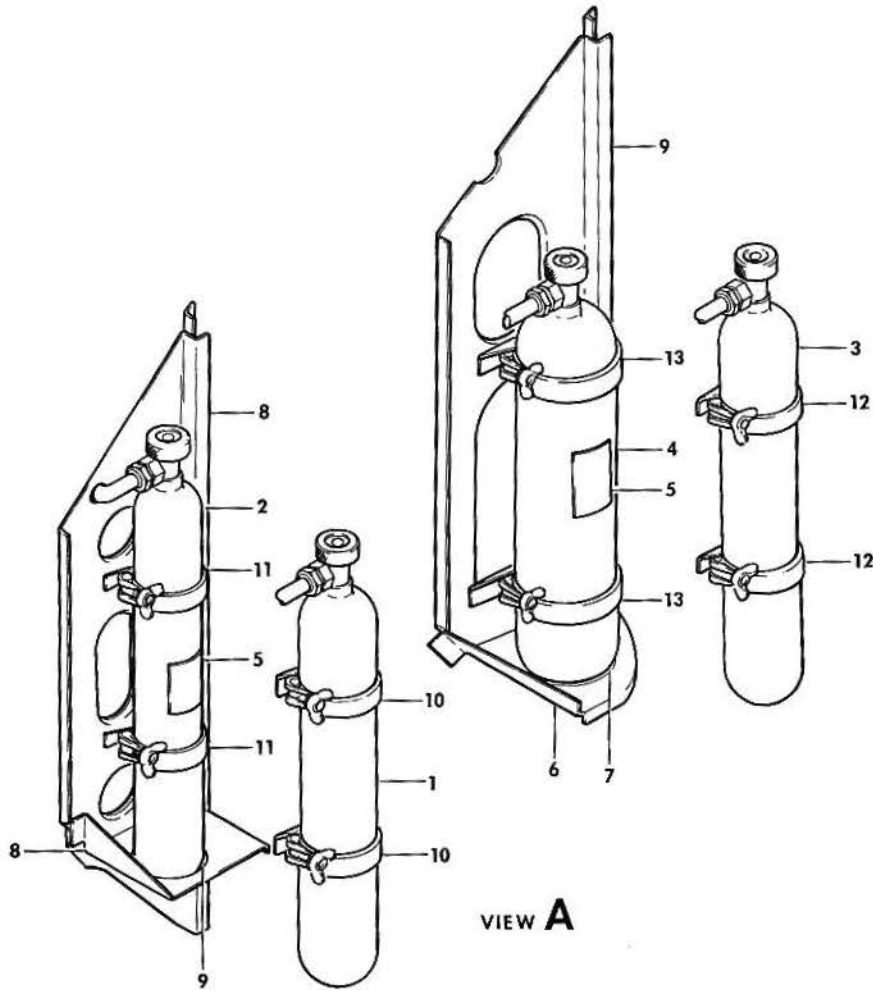
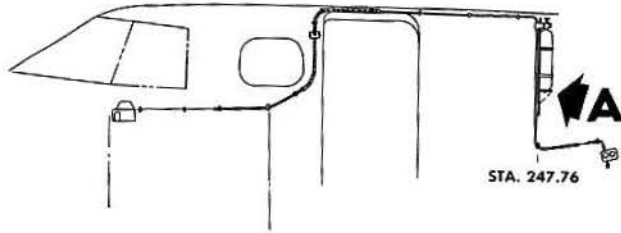
LIST OF PAGES & TABLE OF CONTENTS
FOR
CHAPTER 35-00-00 OXYGEN

SYS/SUB-SYS/ CHAP SECTION	PAGE NO.	EFFECTIVE DATE	TABLE OF CONTENTS
35-00-00	1	03/20/81.	LIST OF PAGES & TABLE OF CONTENTS
35-00-01	1	03/20/81.	OXYGEN STORAGE SYSTEM
35-00-01	2	03/20/81	
35-00-01	3	03/20/81	
35-00-10	1	03/20/81.	CABIN OXYGEN SYSTEM
35-00-10	2	03/20/81	
35-00-10	3	03/20/81	
35-00-10	4	03/20/81	
35-00-10	5	03/20/81	
35-00-50	1	03/20/81.	OXYGEN REGULATOR VALVE.
35-00-50	2	03/20/81	
35-00-50	3	03/20/81	

BEECHCRAFT
DUKE B60
ILLUSTRATED PARTS CATALOG

35-00-01
OXYGEN STORAGE SYSTEM

BEECHCRAFT
DUKE B60
ILLUSTRATED PARTS CATALOG



B60-341-7

B E E C H C R A F T
DUKE B60
I L L U S T R A T E D P A R T S C A T A L O G

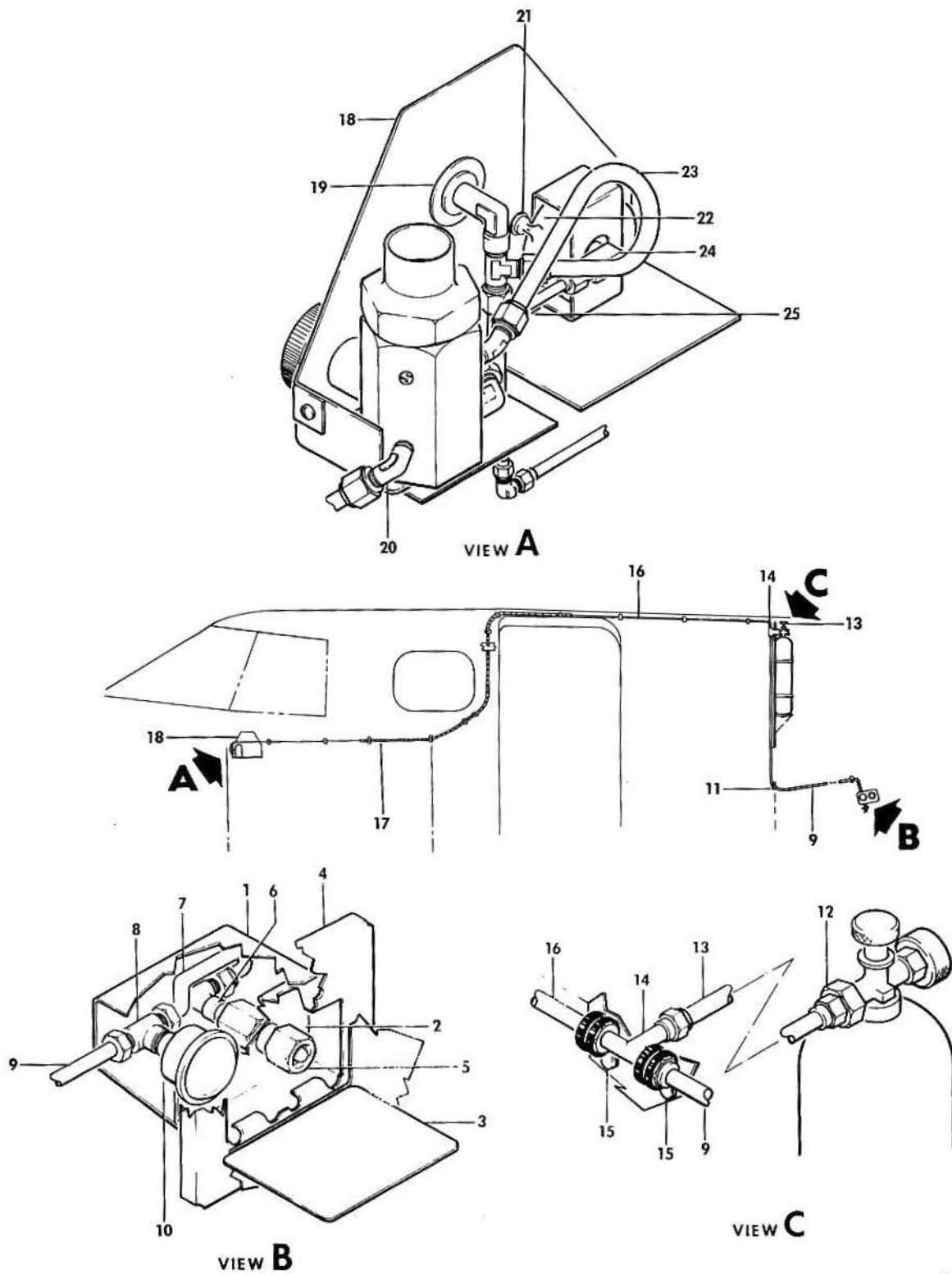
GAMA/ATA CODE & INDEX NO.	PART NO.	DESCRIPTION	UNITS PER ASSY	USABLE ON CODE
		1 2 3 4 5 6 7		
00-01	60-560015-1	OXYGEN INSTL,AFT FUSELAGE/11 CU FT/	NP	
	60-560015-3	OXYGEN INSTL,AFT FUSELAGE/22 CU FT/	NP	
	60-560015-5	OXYGEN INSTL,AFT FUSELAGE/49 CU FT/	NP	
	60-560015-7	OXYGEN INSTL,AFT FUSELAGE/65 CU FT/	NP	
- 1	6350A3-0B	. BOTTLE,OXYGEN/11 CU FT/	1	
	ZC268-11-7	. BOTTLE,OXYGEN/ALTERNATE FOR 6350A3-0B/.	1	
	ZC382-11	. BOTTLE,OXYGEN/ALTERNATE FOR 6350A3-0B/.	1	
- 2	6350A4-0B	. BOTTLE,OXYGEN/22 CU FT/	1	
	ZC268-22-7	. BOTTLE,OXYGEN/ALTERNATE FOR 6350A4-0B/.	1	
	ZC382-22	. BOTTLE,OXYGEN/ALTERNATE FOR 6350A4-0B/.	1	
- 3	6350A25-0C	. BOTTLE,OXYGEN/44 CU FT/	1	
	ZC268-48-6	. BOTTLE,OXYGEN/ALTERNATE FOR 6350A25-0C/.	1	
	ZC382-49	. BOTTLE,OXYGEN/ALTERNATE FOR 6350A25-0C/.	1	
- 4	6350A27-0C	. BOTTLE,OXYGEN/65 CU FT/	1	
	ZC268-64-6	. BOTTLE,OXYGEN/ALTERNATE FOR 6350A27-0C/.	1	
	ZC382-64	. BOTTLE,OXYGEN/ALTERNATE FOR 6350A27-0C/.	1	
- 5	50-560023	. PLACARD,OXYGEN BOTTLE	2	
- 6	60-560015-15	. BRACKET/44 AND 65 CU FT/.	1	
- 7	60-560015-19	. CUSHION/44 AND 65 CU FT/.	1	
- 8	60-560015-11	. BRACKET/11 AND 22 CU FT/.	1	
- 9	60-560017	. CUSHION/11 AND 22 CU FT/.	1	
- 10	60-560013	. BRACKET,MOUNTING/FOR 11 CU FT BOTTLE/ /ATTACHING PARTS/	2	
	100696D-ZU022	. SPACER.	4	
	AN737TW98-114	. CLAMP	2	
	130909B21	. BOLT.	4	
	AN960-10	. WASHER.	4	
		-----*		
- 11	2918-525W	. BRACKET,MOUNTING/FOR 22 CU FT BOTTLE/ /ATTACHING PARTS/	2	
	130909B17	. BOLT.	4	
	AN960-10	. WASHER.	4	
		-----*		
- 12	8590	. BRACKET,MOUNTING/FOR 44 CU FT BOTTLE/	2	
	ZC18864	. BRACKET,MOUNTING/ALTERNATE FOR 8590/.	2	
		-----*		
	130909B19	. BOLT.	4	
	AN960-10	. WASHER.	4	
	60-560015-21	. SPACER.	4	
		-----*		
- 13	24838-1	. BRACKET,MOUNTING/FOR 65 CU FT BOTTLE/	2	
	Z18864-20	. BRACKET MOUNTING/ALTERNATE FOR 24838-1/	2	
		-----*		
	130909B19	. BOLT.	4	
	AN960-10	. WASHER.	4	
		-----*		

END

BEECHCRAFT
DUKE B60
ILLUSTRATED PARTS CATALOG

35-00-10
CABIN OXYGEN SYSTEM

BEECHCRAFT
DUKE B60
ILLUSTRATED PARTS CATALOG



B60-341-8

B E E C H C R A F T
DUKE B60
I L L U S T R A T E D P A R T S C A T A L O G

GAMA/ATA CODE & INDEX NO.	PART NO.	DESCRIPTION	UNITS PER ASSY	USABLE ON CODE
		1 2 3 4 5 6 7		
00-10	60-560000-129	OXYGEN INSTL,CABIN.	NP	
	60-560016	. VALVE INSTL,AFT FUSELAGE FILLER	NP	
- 1	60-560016-11	. . COVER	1	1
	60-560016-25	. . COVER	1	2
	NAS696A3	. . PLATE,NUT	4	
	NAS697A3	. . PLATE,NUT	2	
- 2	60-560016-9	. . BRACKET	1	1
	60-560016-21	. . BRACKET	1	2
	60-560016-23	. . BRACKET ASSY.	1	2
- 3	60-560016-13	. . . DOOR ASSY	1	
- 4	60-560016-17	. . . DOUBLER ASSY.	1	
		/ATTACHING PARTS/		
	130909B12	. . . BOLT.	4	
	AN960-10L	. . . WASHER.	4	
	130290-2	. . . CLIPNUT	4	

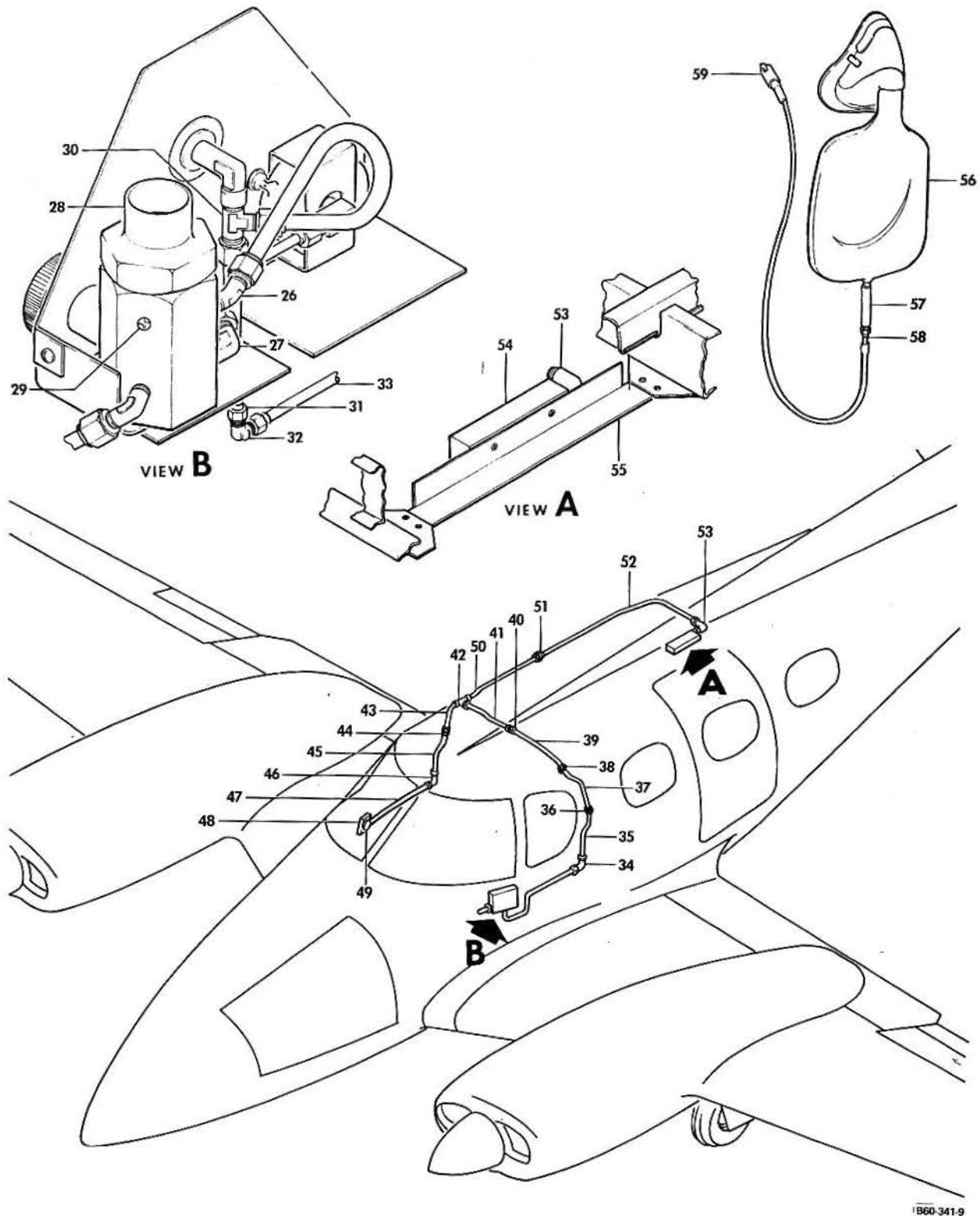
	60-560020-3	. . PLACARD	1	
- 5	26875-48	. . VALVE,FILLER.	1	
		/ATTACHING PARTS/		
	MS35207-263	. . SCREW	3	
	AN960-10L	. . WASHER.	3	
	130909N29	. . NUT	3	

- 6	300-8-2	. . ELBOW	1	
- 7	60-560000-75	. . TUBE/FROM FILLER VALVE TO GAGE TEE/	1	
- 8	300-3TTF	. . TEE/FOR BACK OF FILLER VALVE GAGE/.	1	
- 9	60-560000-73	. . TUBE/FROM FILLER VALVE TEE TO BOTTLE TEE/	1	
- 10	99-384042	. . GAGE.	1	
- 11	MS35489-5	. . GROMMET	2	
- 12	8580	. . COUPLING.	1	
	300-7-2	. . COUPLING/ALTERNATE FOR 8580/.	1	
- 13	60-560000-71	. . TUBE ASSY/FROM OXYGEN BOTTLE TO TEE/.	1	
		/SEE SERVICE INSTRUCTIONS 0726-341/		
- 14	300-3	. . TEE	1	
	1641X3	. . TEE/ALTERNATE FOR 300-3/.	1	
- 15	MS21919DG9	. . CLAMP	2	
		/ATTACHING PARTS/		
	AN515-8R12	. . SCREW	2	
	AN960-8	. . WASHER.	2	
	NAS43DD3-8	. . SPACER.	2	
	MS21042L08	. . NUT	2	

- 16	60-560000-69	. . TUBE ASSY	1	
	MS35489-5	. . GROMMET	2	
	MS35489-4	. . GROMMET	1	
- 17	60-560000-67	. . TUBE ASSY/TO REGULATOR VALVE/	1	
	60-560000-5	. . PANEL ASSY,OXYGEN	1	
		/ATTACHING PARTS/		
	130909B12	. . . BOLT.	2	
	AN960-10L	. . . WASHER.	2	

- 18	60-560014	. . . PANEL ASSY.	1	
	60-530096-3	. . . ESCUTCHEON.	1	
- 19	23599-01	. . . OUTLET ASSY	1	
- 20	300-2-2	. . . ELBOW/REGULATOR INLET/.	1	
	1701X3	. . . ELBOW/ALTERNATE FOR 300-2-2 ELBOW/.	1	
- 21	A89708-2-327	. . . LIGHT ASSY,POST	1	
- 22	99-384042	. . . GAGE ASSY	1	
- 23	60-560000-9	. . . TUBE ASSY/FROM REGULATOR TO TEE/.	1	
- 24	200-8-2	. . . ELBOW/PRESSURE GAGE INLET/.	1	
- 25	60-560000-7	. . . TUBE ASSY/FROM GAGE TO REGULATOR/	1	

BEECHCRAFT
DUKE B60
ILLUSTRATED PARTS CATALOG



B60-341-9

B E E C H C R A F T
DUKE B60
I L L U S T R A T E D P A R T S C A T A L O G

GAMA/ATA CODE & INDEX NO.	PART NO.	1	2	3	4	5	6	7	DESCRIPTION	UNITS PER ASSY	USABLE ON CODE
00-10 - 26	MS20823-5D	ELBOW/REGULATOR VALVE OUTLET/	1	
- 27	200-2-2	ELBOW/REGULATOR OUTLET TO GAGE/	1	
	1701X2	ELBOW/ALTERNATE FOR 200-2-2 ELBOW/	1	
- 28	800308-1	REGULATOR ASSY/SEE CHAPTER 35-00-50/	1	
- 29	AN932D2	PLUG	1	
- 30	MS20826-5D	TEE	1	
- 31	60-560000-115	TUBE ASSY	1	
- 32	AN821-5D	ELBOW	3	
- 33	60-560000-117	TUBE ASSY	1	
- 34	AN821-5D	ELBOW	3	
- 35	60-560000-47	TUBE ASSY	1	
- 36	AN815-5D	UNION	6	
- 37	60-560000-49	TUBE ASSY	1	
- 38	AN815-5D	UNION	6	
- 39	60-560004-51	TUBE ASSY	1	
- 40	AN515-5D	UNION	6	
- 41	60-560000-53	TUBE ASSY	1	
- 42	AN824-5D	TEE	1	
- 43	60-560000-55	TUBE ASSY	1	
- 44	AN815-5D	UNION	6	
- 45	60-560000-109	TUBE ASSY	1	
- 46	AN821-5D	ELBOW	3	
- 47	60-560000-113	TUBE ASSY/TO OXYGEN OUTLET/	1	
- 48	60-560000-65	BRACKET,OXYGEN OUTLET MOUNTING	1	
- 49	23599-11	OUTLET ASSY,OXYGEN	1	
	23599-12	OUTLET ASSY,OXYGEN	1	
	MS20822-5D	ELBOW	1	
	AN816-5D	NIPPLE	1	
- 50	60-560000-95	TUBE ASSY	1	
- 51	AN815-6D	UNION	6	
- 52	60-560000-130	TUBE ASSY/TO OXYGEN MANIFOLD/	1	
- 53	MS20822-5D	ELBOW/OXYGEN MANIFOLD INLET/	1	
- 54	8802-12	MANIFOLD,OXYGEN OUTLET	1	
		/ATTACHING PARTS/		
	MS35206-250	SCREW	2	
	AN960-8L	WASHER	2	
	MS21083N08	NUT	2	
		*-----*		
	8801-2	BODY,MANIFOLD	1	
	AN790-3	ELBOW	1	
	6812	SCREEN,INLET	1	
	8577-5	OUTLET ASSY	5	
	8579	GASKET	5	
	8578	POPPET	5	
	8569-1	SPRING	5	
	60-560018-3	PLATE,FACE/OXYGEN MANIFOLD/	1	
	60-560000-132	SUPPORT ASSY	2	
- 55	60-560000-131	ANGLE ASSY	1	
		/ATTACHING PARTS/		
	MS24621-17	SCREW	4	
		*-----*		
- 56	801145-00	MASK ASSY,OXYGEN	6	
	28314-11	MASK ASSY,OXYGEN	1	
	800717-00	MASK,OXYGEN	1	
- 57	3/16 1D X 062 W	TUBING	AR	
- 58	8540	INDICATOR,OXYGEN FLOW	1	
- 59	8587-00	CONNECTOR	1	

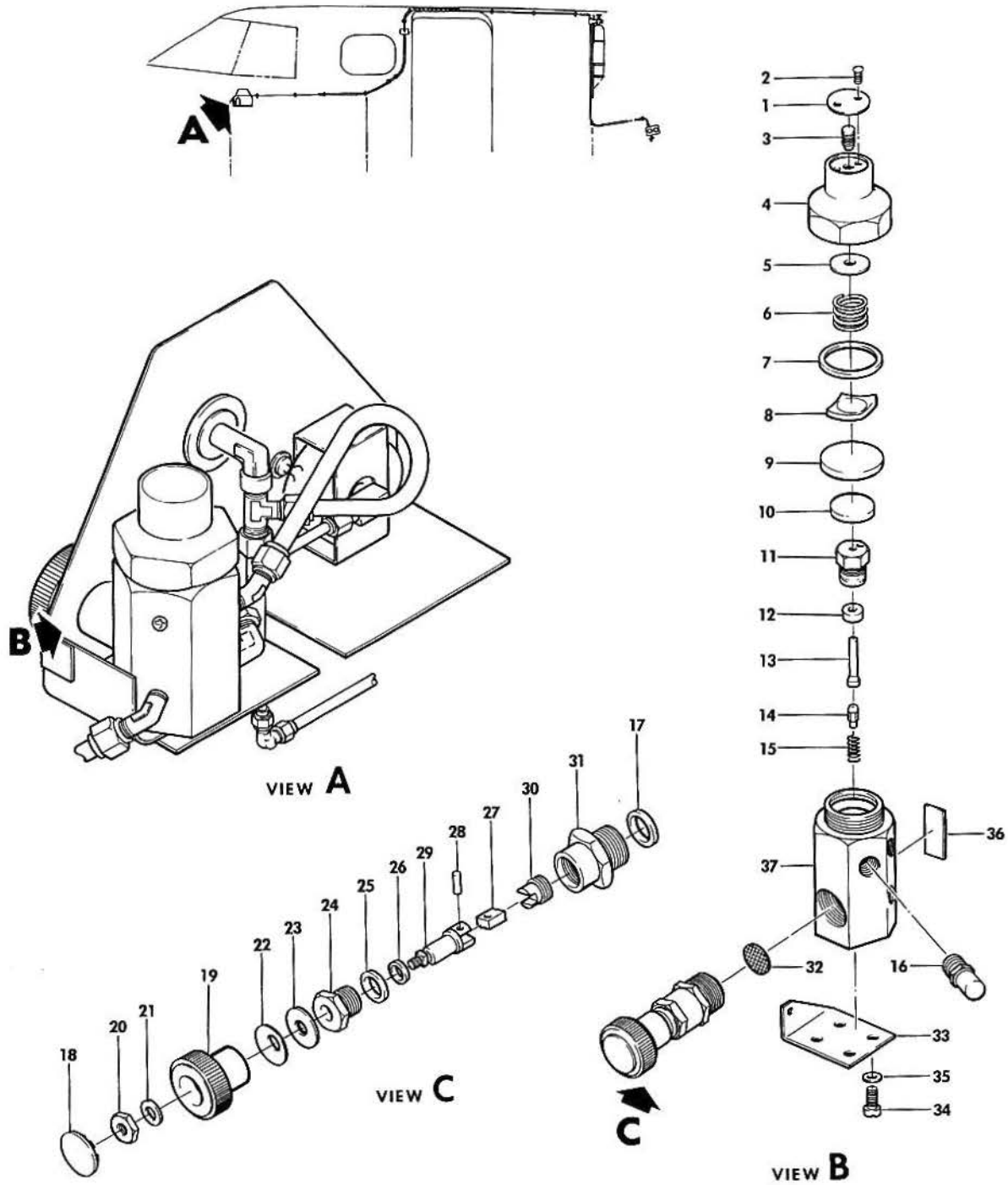
CODES OF EFFECTIVITY

1 P-247 THRU P-501 2 P-502 AND AFTER

B E E C H C R A F T
DUKE 860
I L L U S T R A T E D P A R T S C A T A L O G

35-00-50
OXYGEN REGULATOR VALVE

BEECHCRAFT
DUKE B60
ILLUSTRATED PARTS CATALOG



B60-342-3

B E E C H C R A F T
DUKE B60
I L L U S T R A T E D P A R T S C A T A L O G

GAMA/ATA CODE & INDEX NO.	PART NO.	DESCRIPTION	UNITS PER ASSY	USABLE ON CODE
00-50	800308-1	REGULATOR ASSY, OXYGEN	1	
- 1	5056	. PLATE	1	
		/ATTACHING PARTS/		
- 2	18151	. SCREW	2	

- 3	58297	. SETSCREW	1	
- 4	5005	. CASE, SPRING	1	
- 5	8561	. GUIDE, SPRING	1	
- 6	5003	. SPRING, ADJUSTING	1	
- 7	5033	. RING, SLIP	3	
- 8	5034	. PLATE, DIAPHRAGM	1	
- 9	5032-1	. DIAPHRAGM	1	
- 10	5031	. PLATE, THRUST	1	
- 11	5030-1	. HOLDER, SEAT	1	
- 12	5029	. SEAT	1	
- 13	5028	. PIN, THRUST	1	
- 14	5002	. GUIDE, THRUST PIN	1	
- 15	5027	. SPRING	1	
- 16	5043-14	. VALVE ASSY, RELIEF	1	
	5520-13	. VALVE KIT, ON-OFF	1	
- 17	18037	. PACKING, PREFORMED	1	
- 18	57827	. BUTTON, PLUG	1	
- 19	10001190	. KNOB	1	
		/ATTACHING PARTS/		
- 20	18445	. NUT	1	
- 21	19147	. WASHER	1	

- 22	2245-1	. WASHER, SPRING	1	
- 23	5511	. WASHER	2	
- 24	23394-1	. NUT, PACKING	1	
- 25	18066	. PACKING, PREFORMED	1	
- 26	5517	. SEAT, TEFLON	1	
	5513	. STEM ASSY, VALVE	1	
- 27	5515	. TANG	1	
		/ATTACHING PARTS/		
- 28	5521	. PIN	1	

- 29	5514	. STEM, VALVE	1	
- 30	5518	. HEAD ASSY, VALVE	1	
- 31	23393-1	. BUSHING	1	
- 32	5522	. FILTER	1	
- 33	10000596	. BRACKET, MOUNTING	1	
		/ATTACHING PARTS/		
- 34	57826	. SCREW	2	
- 35	18215	. WASHER	2	

- 36	2824	. PLATE, NAME	1	
- 37	10000586	. BODY	1	

