

B E E C H C R A F T
DUKE B60
I L L U S T R A T E D P A R T S C A T A L O G

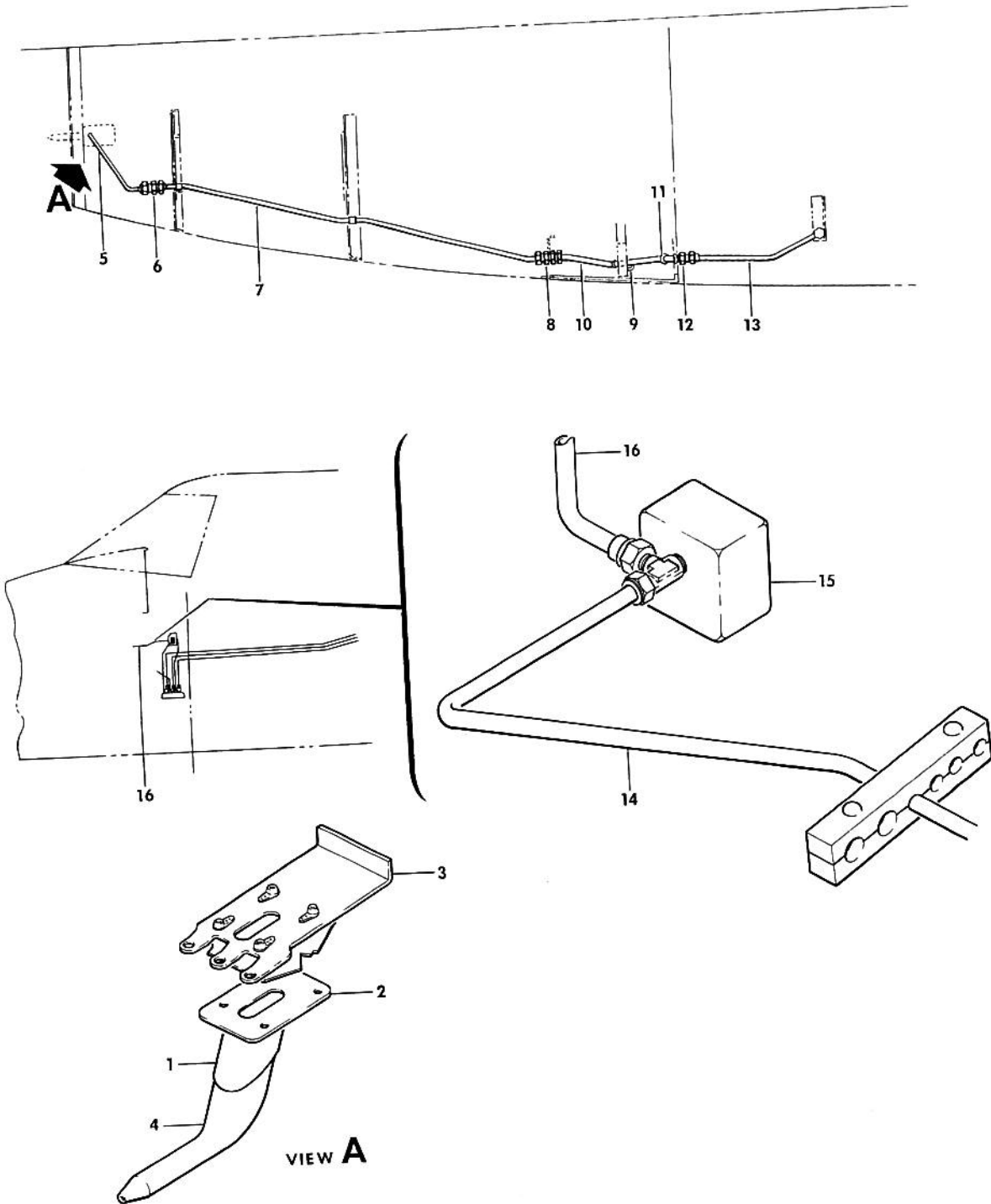
LIST OF PAGES & TABLE OF CONTENTS
FOR
CHAPTER 34-00-00 NAVIGATION, PITOT/STATIC

SYS/SUB-SYS/ CHAP SECTION	PAGE NO.	EFFECTIVE DATE	TABLE OF CONTENTS
34-00-00	1	01/08/82. LIST OF PAGES & TABLE OF CONTENTS
34-10-01	1	03/20/81. PITOT AND STATIC SYSTEM
34-10-01	2	03/20/81	
34-10-01	3	03/20/81	
34-10-01	4	03/20/81	
34-10-01	5	01/08/82	

BEECHCRAFT
DUKE B60
ILLUSTRATED PARTS CATALOG

34-10-01
PITOT AND STATIC SYSTEM

BEECHCRAFT
DUKE B60
ILLUSTRATED PARTS CATALOG



B60-394-4

B E E C H C R A F T
DUKE B60
I L L U S T R A T E D P A R T S C A T A L O G

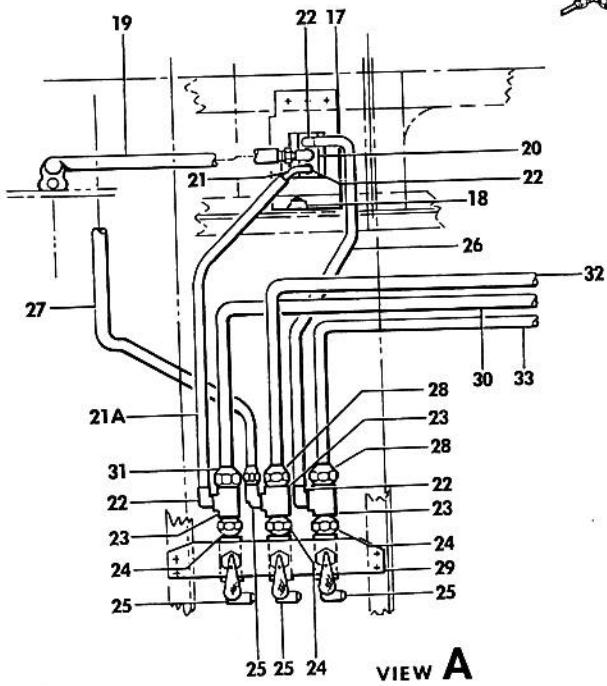
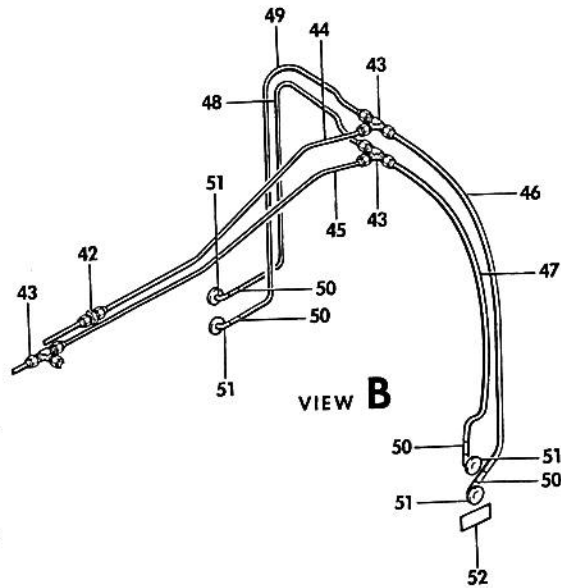
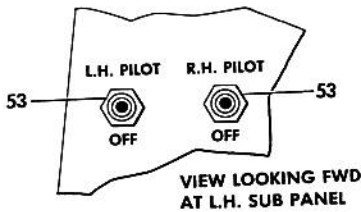
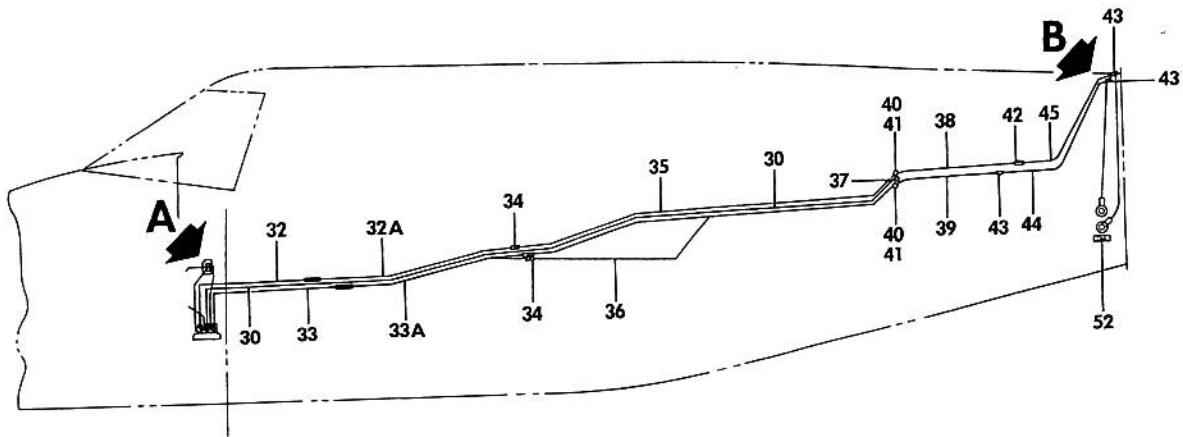
GAMA/ATA CODE & INDEX NO.	PART NO.	DESCRIPTION							UNITS PER ASSY	USABLE ON CODE	
		1	2	3	4	5	6	7			
10-01	60-320000-305	PLUMBING INSTL,SINGLE INSTRUMENT PRESSURE	NP		
	60-320000-307	PLUMBING INSTL,DUAL INSTRUMENT PRESSURE	NP		
	60-320000-309	PLUMBING INSTL,DUAL INSTRUMENT PRESSURE	NP		
			/FOR ALL ELECTRIC PILOT GYROS/								
		60-324086-1	. PITOT TUBE INSTL,SINGLE HEATED LH	NP	
		60-324086-2	. PITOT TUBE INSTL,DUAL RH /OPTIONAL/	NP	
		60-324086-4	. . MAST ASSY,SINGLE HEATED PITOT LH.	1	
		60-324086-3	. . MAST ASSY,DUAL HEATED MAST RH	1	
			/ATTACHING PARTS/								
		MS24693S50	. . SCREW	4	

	- 1	60-324086-5	. . . MAST,LH PITOT	1	
		60-324086-6	. . . MAST,RH PITOT	1	
	- 2	60-324086-7	. . . PLATE,LH PITOT MAST	1	
		60-324086-8	. . . PLATE,RH PITOT MAST	1	
		60-324086-19	. . DOUBLER ASSY,LH PITOT MAST.	1	
	60-324086-16	. . DOUBLER ASSY,RH PITOT MAST.	1		
- 3	60-324086-17	. . . DOUBLER,LH PITOT MAST	1		
	60-324086-14	. . . DOUBLER,RH PITOT MAST	1		
- 4	50-384040	. . TUBE,PITOT.	1		
		/ATTACHING PARTS/									
	MS24693S224	. . SCREW	2		

- 5	60-320000-157	. TUBE ASSY,PITOT PRESSURE LH	1		
	60-320000-158	. TUBE ASSY,PITOT PRESSURE RH	1		
- 6	AN919-6D	. REDUCER	1		
- 7	60-320000-159	. TUBE ASSY,PITOT PRESSURE LH	2		
	60-320000-161	. TUBE ASSY,PITOT PRESSURE RH	1		
	AN924-6D	. NUT	1		
	AN960D916	. WASHER.	1		
- 8	AN832-6D	. UNION,PITOT PRESSURE TUBE	1		
	MS35489-14S	. GROMMET,PITOT PRESSURE TUBE	1		
	MS35489-11S	. GROMMET,PITOT PRESSURE TUBE	1		
- 9	MS35489-11	. GROMMET,LH PITOT PRESSURE TUBE.	1		
- 10	60-320000-163	. TUBE ASSY,PITOT PRESSURE.	1		
	60-320000-165	. TUBE ASSY,PITOT PRESSURE /OPTIONAL/	1		
	MS21919D66	. CLAMP,PITOT PRESSURE TUBE	2		
		/ATTACHING PARTS/									
	MS35206-24S	. SCREW	1		
	AN960-8	. WASHER.	1		
	130909N28	. NUT	1		

- 11	AN837-6D	. ELBOW,PITOT PRESSURE TUBE	2		
	AN960D916	. WASHER,PITOT PRESSURE TUBE.	2		
	AN924-6D	. NUT,PITOT PRESSURE TUBE	2		
- 12	6-4TRTX6D	. REDUCER,PITOT PRESSURE.	2		
	AN818-6D	. NUT	2		
- 13	60-320000-167	. TUBE ASSY,PITOT PRESSURE.	1		
	60-320000-168	. TUBE ASSY,PITOT PRESSURE /OPTIONAL/	1		
- 14	60-320000-91	. TUBE ASSY,STATIC AIR VENT	1		
	60-320000-111	. TUBE ASSY,STATIC AIR VENT /OPTIONAL/	1		
- 15	50-380046-3	. GAGE,CABIN DIFFERENTIAL PRESSURE.	1		
	MS20826-4D	. TEE,PRESSURE GAGE	1		
- 16	60-320000-95	. TUBE ASSY,STATIC AIR VENT /OPTIONAL/.	1		

BEECHCRAFT
DUKE B60
ILLUSTRATED PARTS CATALOG



860-394-5

B E E C H C R A F T
DUKE B60
I L L U S T R A T E D P A R T S C A T A L O G

GAMA/ATA CODE & INDEX NO.	PART NO.	DESCRIPTION							UNITS PER ASSY	USABLE ON CODE
		1	2	3	4	5	6	7		
10-01 - 17	60-320000-327	• BRACKET,ALTERNATE STATIC AIR VALVE.							1	
	MS35206-244	• SCREW							2	
	AN960D8	• WASHER							2	
	130909N28	• NUT							2	
- 18	60-320000-329	• ANGLE,STATIC AIR VALVE.							1	
- 19	60-320000-333	• TUBE ASSY,ALTERNATE STATIC AIR VALVE.							1	
	AN816-4D	• NIPPLE,ALTERNATE STATIC AIR VALVE							2	
	AN823-4D	• ELBOW							1	
- 20	K4566-3	• VALVE,ALTERNATE STATIC AIR.							1	
	MS35206-244	• SCREW							4	
	AN960D8	• WASHER							4	
	130909N28	• NUT							4	
- 21	60-320000-331	• TUBE ASSY,STATIC AIR VALVE.							1	
- 21A	60-320000-151	• TUBE,ALTERNATE STATIC AIR VALVE .							1	
- 22	AN842-4D	• ELBOW,ALTERNATE STATIC AIR VALVE.							2	
	130292A6	• CLAMP							2	
- 23	AN917-1D	• TEE,STATIC AIR.							3	
- 24	AN911-1D	• NIPPLE							3	
	R 451	• VALVE,ALTERNATE SOURCE.							3	
- 25	MS20822-4D	• ELBOW,ALTERNATE STATIC AIR VALVE DRAIN.							4	
- 26	60-320000-149	• TUBE,STATIC AIR							1	
- 27	60-320000-111	• TUBE,STATIC AIR							1	
- 28	AN816-6-2D	• NIPPLE,STATIC AIR							2	
- 29	60-324087	• PLATE,STATIC AIR VALVE MOUNTING							1	
- 30	60-320000-215	• TUBE,STATIC AIR							1	
- 31	AN840-4D	• ADAPTER,STATIC AIR TUBE							1	
- 32	60-320000-311	• TUBE,STATIC AIR /OPTIONAL/.							1	
- 32A	60-320000-313	• TUBE,STATIC AIR /OPTIONAL/.							1	
	AN815-6D	• UNION							2	
- 33	60-320000-319	• TUBE,STATIC AIR							1	
- 33A	60-320000-321	• TUBE,STATIC							1	
- 34	AN815-6D	• UNION							4	
- 35	60-320000-315	• TUBE,STATIC AIR /OPTIONAL/.							1	
- 36	60-320000-323	• TUBE,STATIC AIR							1	
- 37	282P3/8X3/8	• CONNECTOR							1	
- 38	60-320000-317	• TUBE ASSY,STATIC AIR /OPTIONAL/							1	1
	60-320000-341	• TUBE ASSY,STATIC AIR.							1	2
	AN815-6D	• UNION							1	2
	60-320000-343	• TUBE ASSY,STATIC AIR.							1	2
- 39	60-320000-325	• TUBE ASSY,STATIC AIR.							1	1
	60-320000-345	• TUBE ASSY,STATIC AIR.							1	2
	AN815-6D	• UNION							1	2
	60-320000-347	• TUBE ASSY,STATIC AIR.							1	2
- 40	AN832-6D	• ELBOW,BULKHEAD.							2	2
	AN960-916	• WASHER							2	
- 41	AN924-6D	• NUT							2	
- 42	AN815-6D	• UNION,STATIC AIR TUBE /OPTIONAL/.							1	
- 43	AN824-6D	• TEE,STATIC AIR TUBE							3	
	AN929-6	• CAP,STATIC AIR TUBE /WITHOUT AUTOPILOT/							1	
- 44	60-320000-179	• TUBE ASSY,STATIC AIR UPPER/OPTIONAL/.							1	
- 45	60-320000-171	• TUBE ASSY,STATIC AIR LOWER.							1	
- 46	60-320000-181	• TUBE ASSY,STATIC AIR.							1	
- 47	60-320000-175	• TUBE ASSY,STATIC AIR.							1	
- 48	60-320000-183	• TUBE ASSY,STATIC AIR LOWER RH/OPTIONAL/							1	
- 49	60-320000-173	• TUBE ASSY,STATIC AIR.							1	
- 50	60-320000-191	• TUBE,STATIC AIR VENT.							4	
	A9	• CLAMP							8	
- 51	96-440012-1	• BUTTON,STATIC AIR							4	
- 52	35-410286 B-C	• PLACARD,STATIC AIR WARNING.							2	
	35-410286 W-C	• PLACARD,STATIC AIR WARNING.							2	
- 53	35-380053-7	• SWITCH,PITOT /OPTIONAL/							1	
	35-380052	• KNOB,PITOT SWITCH /OPTIONAL/.							1	

CODES OF EFFECTIVITY

1 P-247 THRU P-510 2 P-511,
P-512 THRU P-519 P-520 AND AFTER

REVISED
01/08/82

"END"

34-10-01
PAGE 5

