

B E E C H C R A F T
DUKE B60
I L L U S T R A T E D P A R T S C A T A L O G

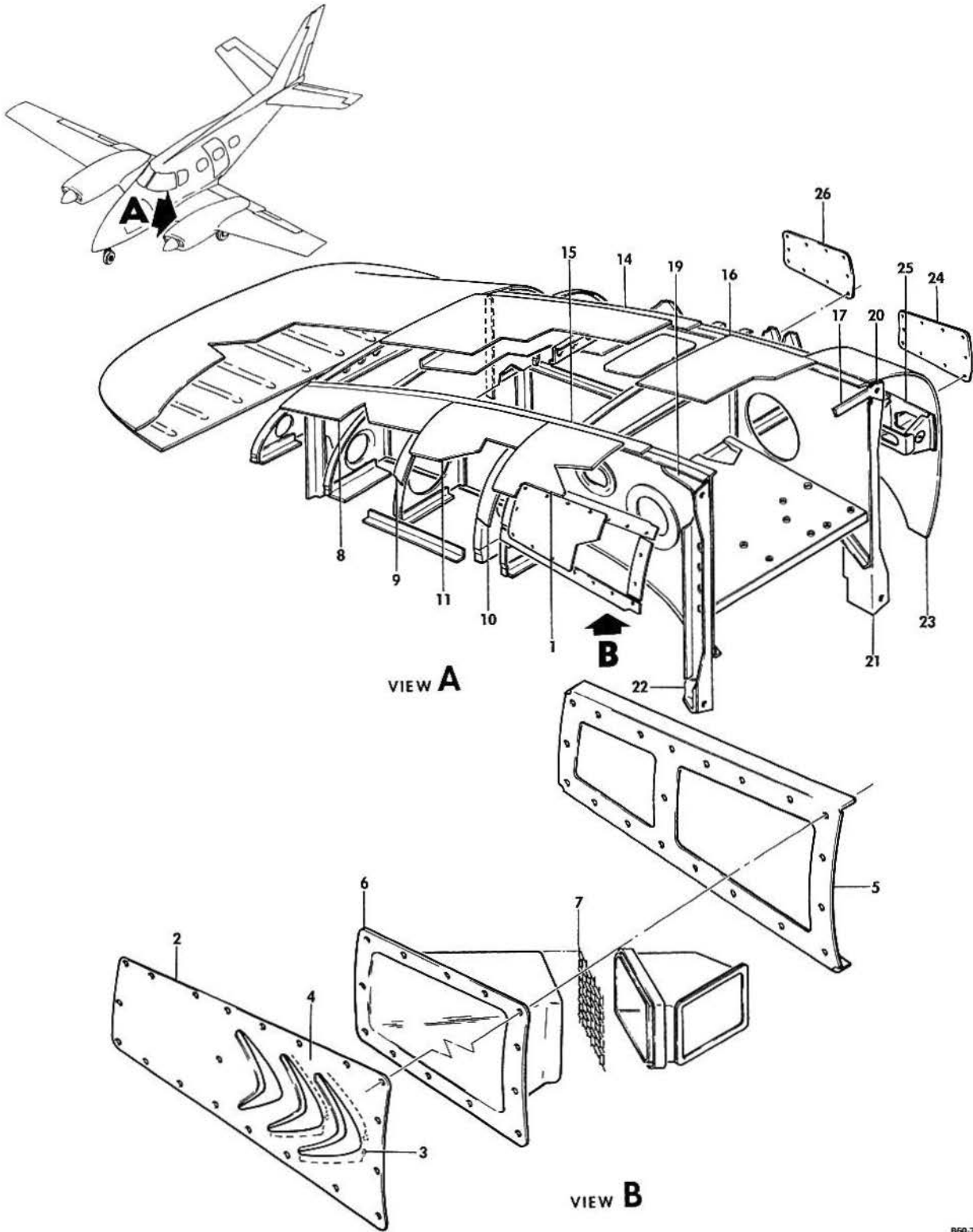
LIST OF PAGES & TABLE OF CONTENTS
FOR
CHAPTER 54-00-00 NACELLES

SYS/SUB-SYS/ CHAP SECTION	PAGE NO.	EFFECTIVE DATE	TABLE OF CONTENTS
54-00-00	1	04/16/82. LIST OF PAGES & TABLE OF CONTENTS
54-10-01	1	03/20/81. NACELLE ASSEMBLY.
54-10-01	2	03/20/81	
54-10-01	3	04/16/82	
54-10-01	4	03/20/81	
54-10-01	5	03/20/81	
54-10-01	6	03/20/81	
54-10-01	7	03/20/81	
54-10-01	8	03/20/81	
54-10-01	9	03/20/81	
54-10-01	10	03/20/81	
54-10-01	11	03/20/81	
54-30-01	1	03/20/81. NACELLE SKINS
54-30-01	2	03/20/81	
54-30-01	3	03/20/81	
54-50-01	1	03/20/81. NACELLE FILLET INSTALLATION
54-50-01	2	03/20/81	
54-50-01	3	03/20/81	

BEECHCRAFT
DUKE B60
ILLUSTRATED PARTS CATALOG

54-10-01
NACELLE ASSEMBLY

BEECHCRAFT
DUKE B60
ILLUSTRATED PARTS CATALOG



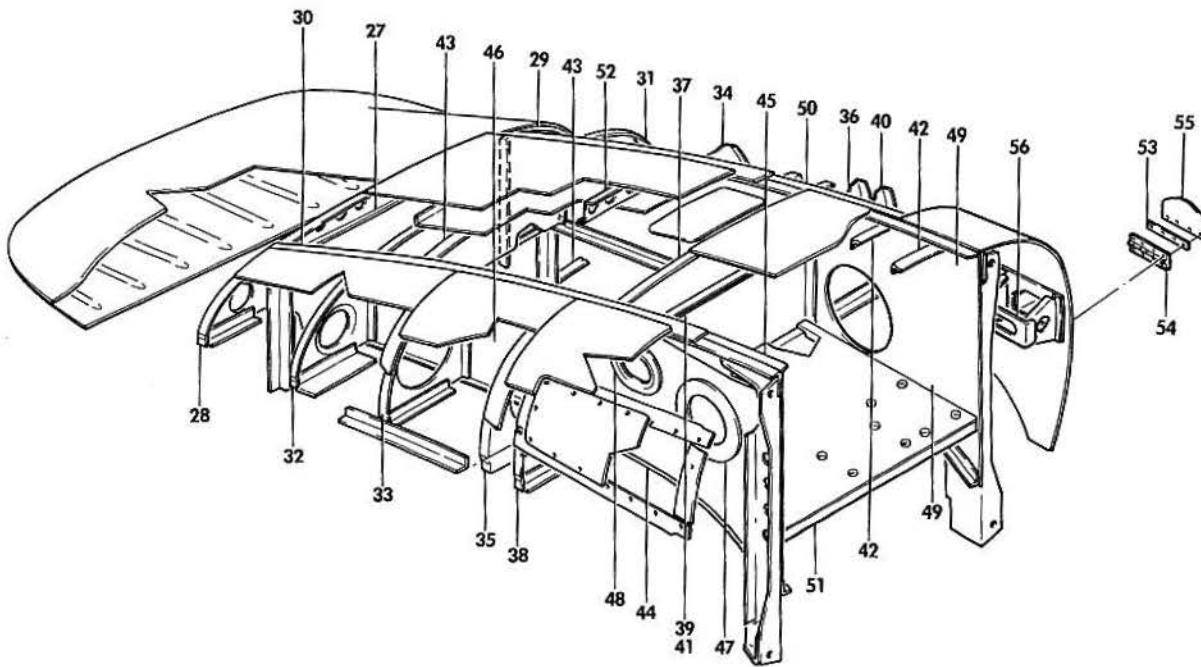
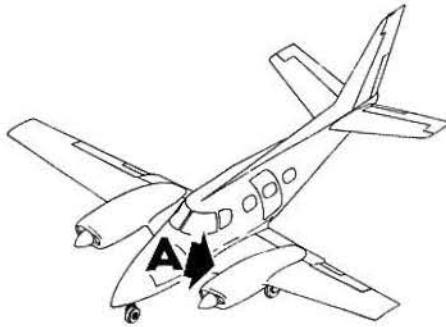
B60-38-3

FIGURE 10-01. NACELLE ASSEMBLY
/SHEET 1 OF 5 SHEETS/

B E E C H C R A F T
DUKE B60
I L L U S T R A T E D P A R T S C A T A L O G

GAMA/ATA CODE & INDEX NO.	PART NO.	DESCRIPTION							UNITS PER ASSY	USABLE ON CODE
		1	2	3	4	5	6	7		
10-01	60-980000-613	NACELLE ASSY,LH ENGINE.	NP	
	60-980000-614	NACELLE ASSY,RH ENGINE.	NP	
	60-980000-615	. NACELLE SUB ASSY,LH ENGINE.	1	
	60-980000-616	. NACELLE SUB ASSY,RH ENGINE.	1	
	R 130761-05000	. SEAL/BETWEEN AFT NACELLE AND FLAP/.	1	
- 1	60-980000-149	. SKIN,UPPER INBOARD FWD LH NACELLE	1	
	60-980000-127	. SKIN,UPPER OUTBOARD RH NACELLE.	1	
	60-980000-263	. DOOR ASSY,ALTERNATE AIR LH.	1	
	60-980000-265	. DOOR ASSY,ALTERNATE AIR RH.	1	
- 2	60-980000-263	. DOOR,LH	1	
	60-980000-267	. DOOR,RH	1	
- 3	60-980000-269	. SUPPORT	3	
- 4	60-980000-271	. SUPPORT	1	
- 5	60-980000-231	. SUPPORT,LH.	1	
	60-980000-233	. SUPPORT,RH.	1	
	60-980056-1	. DUCT ASSY,ALTERNATE AIR	1	
- 6	60-950056-13	. WELD ASSY	1	
- 7	60-950056-7	. SCREEN	1	
	AN960-4	. WASHER.	8	
- 8	60-980000-109	. SKIN,UPPER INBOARD LH NACELLE	1	
	60-980000-119	. SKIN,UPPER OUTBOARD RH NACELLE.	1	
- 9	60-980000-117	. DOUBLER,INBOARD LH NACELLE.	1	
	60-980000-125	. DOUBLER,OUTBOARD RH NACELLE	1	
- 10	60-980000-115	. DOUBLER,DOOR LH	1	
	60-980000-123	. DOUBLER,DOOR RH	1	
- 11	60-980000-111	. DOOR,LH NACELLE FUEL CELL ACCESS.	1	
	60-980000-121	. DOOR,RH NACELLE FUEL CELL ACCESS.	1	
- 12		. DELETED		
- 13		. DELETED		
- 14	60-980000-75	. STRAP,LH OUTBOARD FUEL CELL SUPPORT	1	
	60-980000-76	. STRAP,RH OUTBOARD FUEL CELL SUPPORT	1	
- 15	60-980000-77	. STRAP,LH INBOARD FUEL CELL SUPPORT.	1	
	60-980000-78	. STRAP,RH INBOARD FUEL CELL SUPPORT.	1	
- 16	60-980000-255	. SKIN,TOP LH NACELLE	1	
- 17	60-980000-197	. SPACER.	1	
- 18		. DELETED		
- 19	60-980011-2	. LUG,LH UPPER FIREWALL HANGER.	1	
	60-980011-1	. LUG,RH UPPER FIREWALL HANGER.	1	
- 20	60-980011-3	. LUG,LH UPPER FIREWALL HANGER.	1	
	60-980011-4	. LUG,RH UPPER FIREWALL HANGER.	1	
- 21	60-980012-3	. LUG,LOWER FIREWALL HANGER	1	
- 22	60-980012-4	. LUG,LOWER FIREWALL HANGER	1	
- 23	60-980000-63	. SKIN,UPPER NACELLE LH	1	
	60-980000-165	. SKIN,UPPER NACELLE RH	1	
- 24	60-980000-163	. DOOR.	1	
- 25	60-980000-161	. DOUBLER,LH.	1	
	60-980000-159	. DOUBLER,RH.	1	
- 26	60-980000-157	. DOOR,RH	1	
	60-980000-155	. DOUBLER,RH.	1	

BEECHCRAFT
DUKE B60
ILLUSTRATED PARTS CATALOG



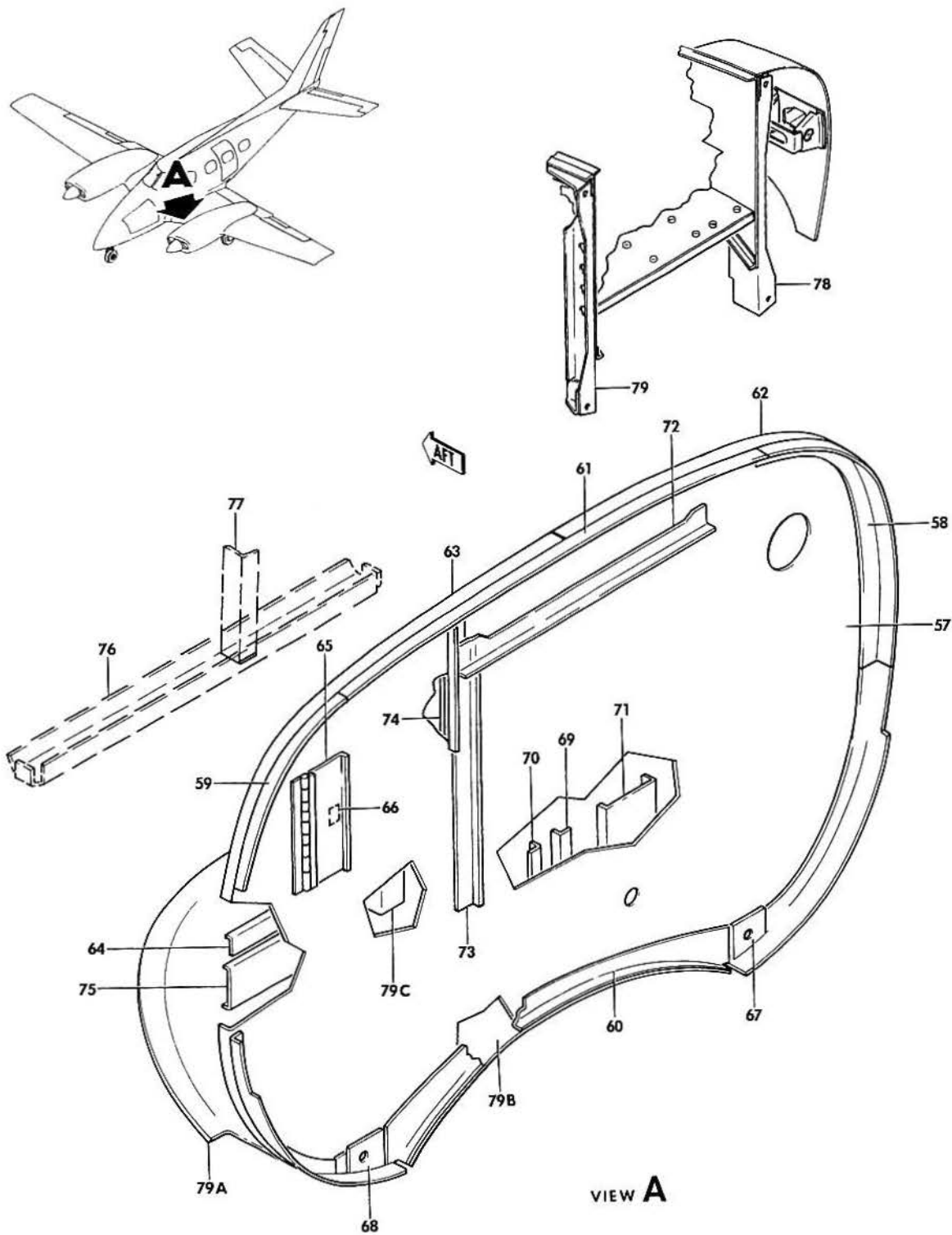
VIEW A

B60 35-4

B E E C H C R A F T
DUKE B60
I L L U S T R A T E D P A R T S C A T A L O G

GAMA/ATA CODE & INDEX NO.	PART NO.	DESCRIPTION	1 2 3 4 5 6 7							UNITS PER ASSY	USABLE ON CODE
			1	2	3	4	5	6	7		
10-01 - 27	60-980015-3	• FORMER,UPPER CENTER FS.170.5 LH								1	
	60-980015-4	• FORMER,UPPER CENTER FS.170.5 RH								1	
- 28	60-980015-7	• FORMER,UPPER NACELLE FS.170.5 LH.								1	
	60-980015-11	• FORMER,UPPER NACELLE FS.170.5 RH.								1	
- 29	60-980015-5	• FORMER,UPPER NACELLE FS.170.5 LH.								1	
	60-980015-8	• FORMER,UPPER NACELLE FS.170.5 RH.								1	
- 30	60-980016-3	• FORMER,UPPER CENTER FS.161.25 LH.								1	
	60-980016-4	• FORMER,UPPER CENTER FS.161.25 RH.								1	
- 31	60-980016-5	• FORMER,UPPER NACELLE FS.161.25 LH								1	
	60-980016-6	• FORMER,UPPER NACELLE FS.161.25 RH								1	
- 32	60-980016-7	• FORMER,UPPER NACELLE FS.161.25 LH								1	
	60-980016-8	• FORMER,UPPER NACELLE FS.161.25 RH								1	
- 33	60-980017-5	• FORMER,LH NACELLE UPPER FS.150.88								1	
	60-980032-3	• FORMER,RH NACELLE UPPER FS.150.88								1	
- 34	60-980017-9	• FORMER,LH NACELLE UPPER FS.150.88								1	
	60-980032-5	• FORMER,RH NACELLE UPPER FS.150.88								1	
- 35	60-980018-5	• FORMER,LH NACELLE UPPER FS.139.47								1	
	60-980034-3	• FORMER,RH NACELLE UPPER FS.139.47								1	
- 36	60-980018-9	• FORMER,LH NACELLE UPPER FS.139.47								1	
	60-980034-5	• FORMER,RH NACELLE UPPER FS.139.47								1	
- 37	60-980019-3	• FORMER,LH CENTER UPPER NACELLE FS.136.53								1	
	60-980033-3	• FORMER,RH CENTER UPPER NACELLE FS.136.53								1	
- 38	60-980019-7	• FORMER,LH UPPER NACELLE FS.136.53								1	
	60-980033-5	• FORMER,RH UPPER NACELLE FS.136.53								1	
- 39	60-980033-13	• ANGLE								1	
- 40	60-980019-13	• FORMER,LH UPPER NACELLE FS.136.53								1	
	60-980033-11	• FORMER,RH UPPER NACELLE FS.136.53								1	
- 41	60-980019-9	• ANGLE,LH SUPPORT FS.136.53.								1	
- 42	60-980000-189	• STIFFENER								2	
- 43	60-980000-199	• STIFFENER,LH NACELLE.								2	
	60-980000-200	• STIFFENER,RH NACELLE.								2	
- 44	60-980020-5	• RIB,LH INBOARD NACELLE WING STA.60.34								1	
	60-980020-6	• RIB,RH INBOARD NACELLE WING STA.60.34								1	
- 45	60-980020-11	• ANGLE, TOP RIB SUPPORT LH.								1	
	60-980000-12	• ANGLE, TOP RIB SUPPORT RH.								1	
- 46	60-980020-13	• DOUBLER,LH INBOARD RIB.								1	
- 47	60-980020-15	• DOUBLER, INBOARD RIB								1	
- 48	60-980020-17	• DOUBLER,BATTERY VENT TUBE ROUTING								1	
	60-980020-19	• DOUBLER,RH INBOARD NACELLE RIB.								1	
- 49	60-980021-5	• RIB,LH OUTBOARD NACELLE WING STA.80.34.								1	
	60-980021-6	• RIB,RH OUTBOARD NACELLE WING STA.80.34.								1	
- 50	60-980021-9	• ANGLE,LH OUTBOARD NACELLE RIB SUPPORT								1	
	60-980021-10	• ANGLE,RH OUTBOARD NACELLE RIB SUPPORT								1	
	60-980021-11	• DOUBLER,RH OUTBOARD RIB								1	
- 51	60-980031-17	• ANGLE,SUPPORT								1	
- 52	60-980038-1	• SPREADER,LH								1	
	60-980038-2	• SPREADER,RH								1	
- 53	60-980041-5	• SPACER,DOOR HINGE								1	
- 54	60-980041-3	• HINGE,HALF.								2	
- 55	60-980041-1	• DOOR ASSY,EXTERNAL POWER SOURCE								1	
	A4-30	• FASTENER/DZUS/.								1	
- 56	60-980044-7	• SUPPORT ASSY,EXTERNAL POWER								1	
	60-980044-1	• BRACKET,EXTERNAL POWER SOURCE RECEPTACLE.								1	
	60-980044-2	• BRACKET,EXTERNAL POWER SOURCE RECEPTACLE.								1	
	60-980044-5	• CHANEL,SUPPORT.								1	

BEECHCRAFT
DUKE B60
ILLUSTRATED PARTS CATALOG

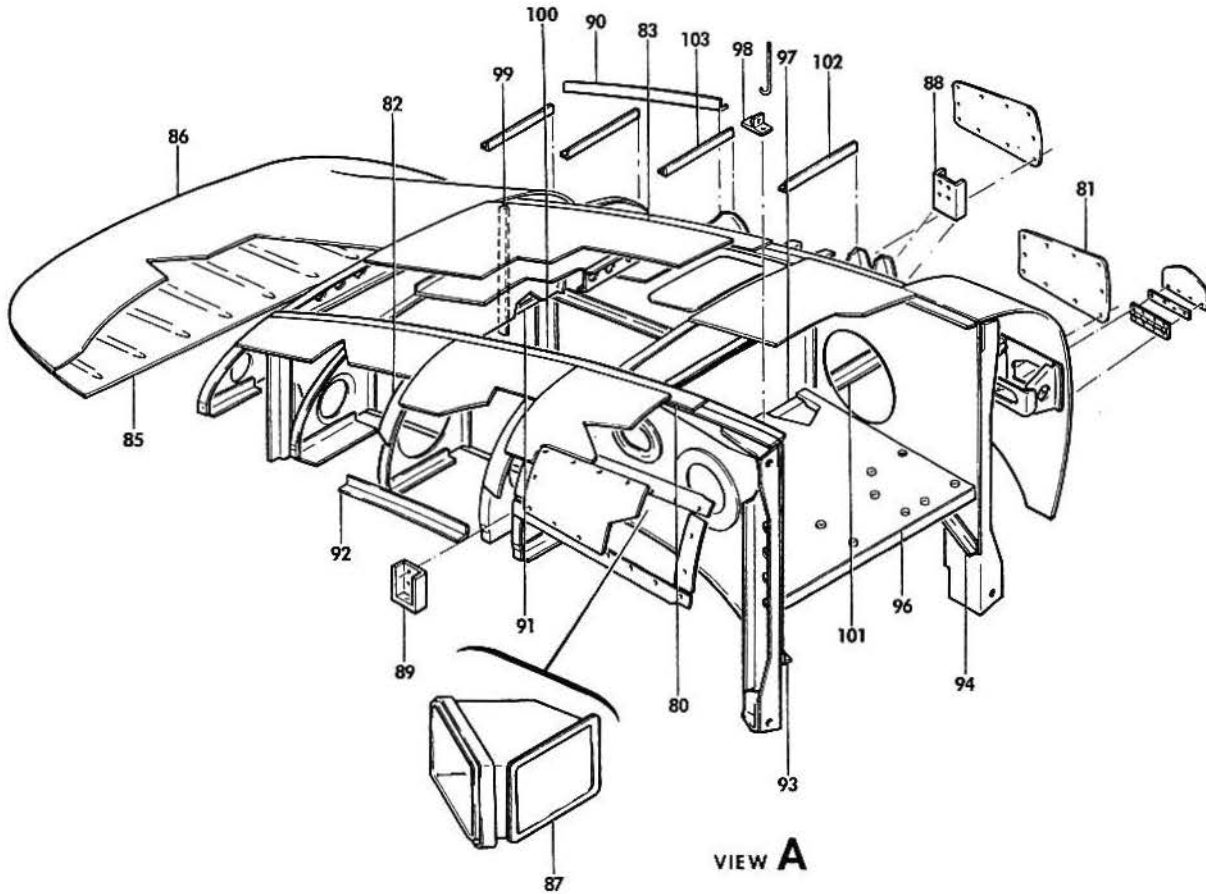
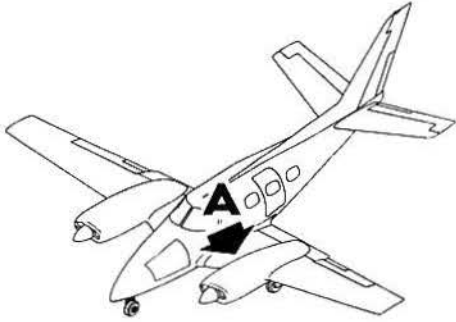


B60-385

B E E C H C R A F T
DUKE B60
I L L U S T R A T E D P A R T S C A T A L O G

GAMA/ATA CODE & INDEX NO.	PART NO.	DESCRIPTION	UNITS PER ASSY	USABLE ON CODE
		1 2 3 4 5 6 7		
10-01	60-980023-607	. BULKHEAD ASSY,LH NACELLE FIREWALL	NP	
	60-980023-609	. BULKHEAD ASSY,RH NACELLE FIREWALL	NP	
- 57	60-980023-157	. . FIREWALL,LH/FS.119.28/.	1	
	60-980023-159	. . FIREWALL,RH/FS.119.28/.	1	
- 58	60-980023-119	. . ANGLE,FIREWALL WEB SUPPORT.	1	
- 59	60-980023-120	. . ANGLE,FIREWALL WEB SUPPORT.	1	
- 60	60-980023-21	. . ANGLE,BELLY FIREWALL WEB SUPPORT.	1	
- 61	60-980023-121	. . ANGLE, TOP FIREWALL WEB SUPPORT.	1	
- 62	60-980023-139	. . ANGLE, TOP LH FIREWALL WEB SUPPORT LH.	1	
	60-980023-143	. . ANGLE, TOP RH FIREWALL WEB SUPPORT LH.	1	
- 63	60-980023-141	. . ANGLE, TOP LH FIREWALL WEB SUPPORT RH.	1	
	60-980023-145	. . ANGLE, TOP RH FIREWALL WEB SUPPORT RH.	1	
- 64	60-980023-101	. . ANGLE,CENTER FIREWALL WEB SUPPORT	1	
- 65	60-980023-31	. . DOOR,UPPER WEB.	1	
	60-980023-33	. . HINGE,HALF.	1	
	60-980023-35	. . HINGE,HALF.	1	
	60-980023-131	. . ZEE/MAGNETIC CATCH SUPPORT/	1	
	60-980023-39	. . FILLER.	1	
- 66	541	. . CATCH,MAGNETIC.	1	
		/ATTACHING PARTS/		
	MS35206-245	. . SCREW	1	
	AN960-8	. . WASHER.	1	
	MS20002-4	. . WASHER.	1	
	MK1000-08	. . NUTPLATE.	1	
		-----*		
- 67	60-980023-43	. . PLATE,ENGINE MOUNT SUPPORT.	1	
- 68	60-980023-44	. . PLATE,ENGINE MOUNT SUPPORT.	1	
- 69	60-980023-45	. . ANGLE,SUPPORT LH FIREWALL	1	
	60-980023-49	. . ANGLE,SUPPORT RH FIREWALL	1	1
- 70	60-980023-46	. . ANGLE,SUPPORT LH FIREWALL	1	
	60-980023-50	. . ANGLE,SUPPORT RH FIREWALL	1	1
- 71	60-980023-155	. . REINFORCEMENT	1	
- 72	60-980023-53	. . SUPPORT,LH.	1	
- 73	60-980023-55	. . SUPPORT,LH.	1	
- 74	60-980023-71	. . REINFORCEMENT, TOP CENTER RH WEB	1	
- 75	60-980023-75	. . REINFORCEMENT,CENTER WEB.	1	
- 76	60-980051	. . SUPPORT,LH.	1	
- 77	60-980023-97	. . ANGLE,LH.	1	
	60-980023-98	. . ANGLE,RH.	1	
- 78	60-980024-1	. . REINFORCEMENT,FIREWALL LH OUTBOARD.	1	
	60-980024-2	. . REINFORCEMENT,FIREWALL RH OUTBOARD.	1	
- 79	60-980025-3	. . REINFORCEMENT,FIREWALL LH INBOARD	1	
	60-980025-4	. . REINFORCEMENT,FIREWALL RH INBOARD	1	
	115150	. . SPRING.	1	
	60-980023-165	. . PIN	1	
- 79A	60-980000-65	. SKIN,FORWARD BELLY LH NACELLE	1	
	60-980000-66	. SKIN,FORWARD BELLY RH NACELLE	1	
- 79B	60-980000-97	. SHIELD,LH NACELLE BELLY HEAT.	1	
	60-980000-98	. SHIELD,RH NACELLE BELLY HEAT.	1	
- 79C	60-980000-131	. SUPPORT,LH FIREWALL	1	

BEECHCRAFT
DUKE B60
ILLUSTRATED PARTS CATALOG

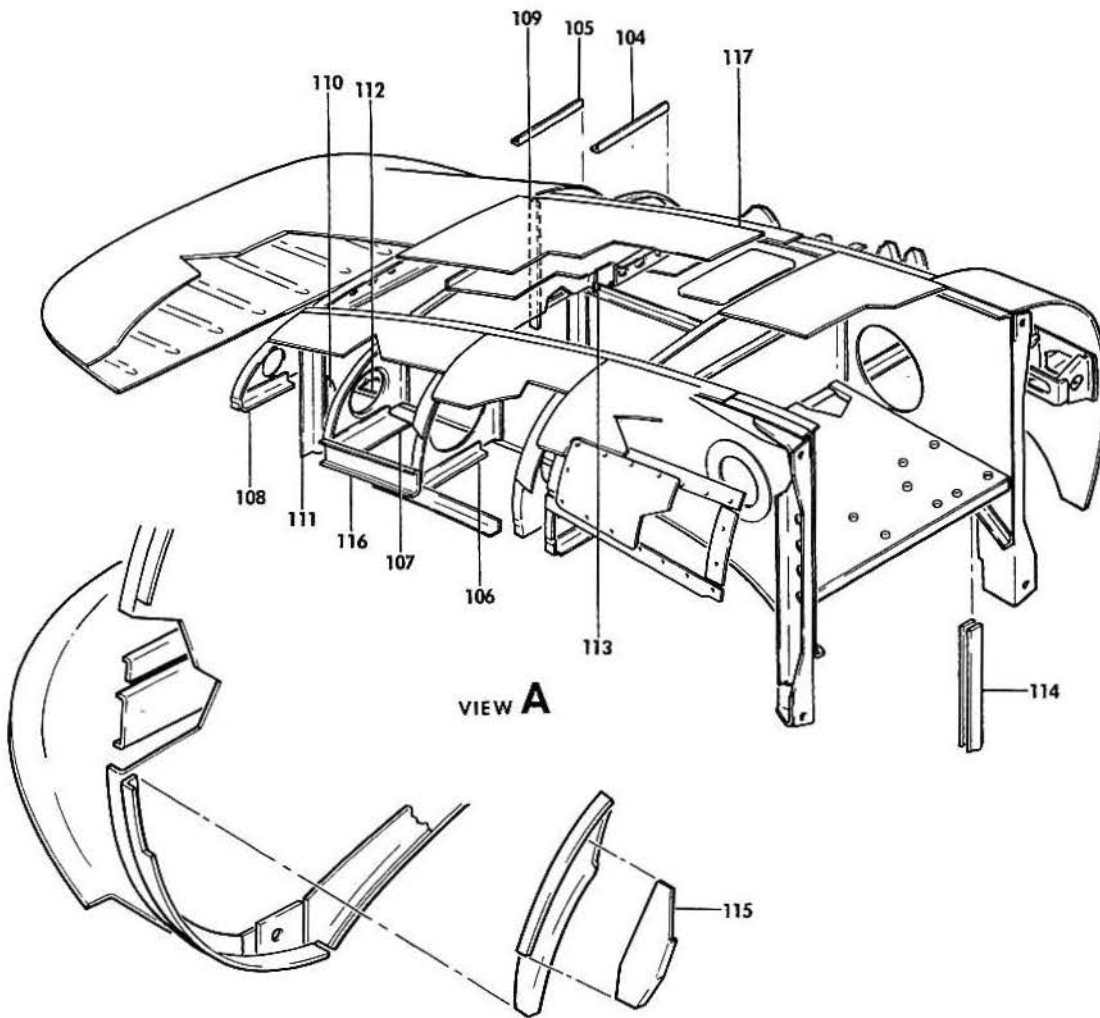
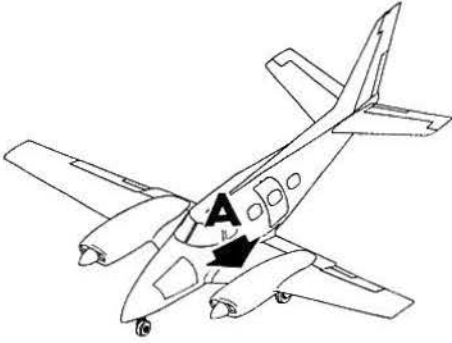


B60-38-6

B E E C H C R A F T
DUKE B60
I L L U S T R A T E D P A R T S C A T A L O G

GAMA/ATA CODE & INDEX NO.	PART NO.	DESCRIPTION	UNITS PER ASSY	USABLE ON CODE
		1 2 3 4 5 6 7		
10-01	60-980000-287	. DOUBLER,LH.	1	
	60-980000-288	. DOUBLER,RH.	1	
	60-980000-285	. DOUBLER,LH.	1	
	60-980000-286	. DOUBLER,RH.	1	
- 80	60-980000-77	. STRAP,LH.	1	
	60-980000-78	. STRAP,RH.	1	
- 81	60-980000-163	. DOOR.	1	
		/ATTACHING PARTS/		
	NAS1032A3K	. NUTPLATE.	4	
	NAS1031A3K	. NUTPLATE.	6	
	AN509-10R8	. SCREW	10	
		-----*		
- 82	60-980000-117	. DOUBLER	1	
- 83	60-980000-207	. SKIN, TOP CENTER LH NACELLE.	1	
	60-980000-208	. SKIN, TOP CENTER RH NACELLE.	1	
- 84		DELETED		
	60-980000-185	SHIM.	1	
- 85	60-980000-147	PAN,AFT NACELLE LH.	1	
	60-980000-148	PAN,AFT NACELLE RH.	1	
- 86	60-980053-603	SKIN ASSY,AFT UPPER NACELLE LH.	1	
	60-980053-604	SKIN ASSY,AFT UPPER NACELLE RH.	1	
	60-980000-257	TIE,LH TENSION.	2	
	60-980000-258	TIE,RH TENSION.	2	
	60-980054-25	DUCT ASSY,ALTERNATE AIR	1	
	60-910024-7	. GASKET.	1	
- 87	60-980054-17	. WELD ASSY,DUCT.	1	
	60-980054-23	. SEAL.	1	
	MK1000-38C	. NUTPLATE.	2	
	MK3000-38C	. NUTPLATE.	4	
	K1100-832	. NUTPLATE.	1	
- 88	95-980017-7	TIE,NACELLE TO MAIN SPAR OUTBOARD LH.	1	
	95-980017-11	TIE,NACELLE TO MAIN SPAR OUTBOARD RH.	1	
- 89	95-980017-9	TIE,NACELLE TO MAIN SPAR INBOARD LH.	1	
	95-980017-13	TIE,NACELLE TO MAIN SPAR INBOARD RH.	1	
- 90	60-980000-31	ANGLE,TIE LH.	1	
	60-980000-32	ANGLE,TIE RH.	1	
- 91	60-980000-69	ANGLE,CENTER TIE.	1	
- 92	60-980000-71	ANGLE,TIE LH.	1	
	60-980000-72	ANGLE,TIE RH.	1	
- 93	60-980000-103	ANGLE,TIE LH.	1	
	60-980000-104	ANGLE,TIE RH.	1	
- 94	60-980000-105	ANGLE,TIE LH.	1	
	60-980000-106	ANGLE,TIE RH.	1	
- 95		DELETED		
	60-980000-195	SHIM.	1	
- 96	60-980031-601	PANEL ASSY,BATTERY BOX.	1	2
	60-980031-603	PANEL ASSY,BATTERY BOX.	1	3
- 97	60-980031-11	ANGLE,SUPPORT	1	
- 98	60-980031-15	BRACKET,HOLD DOWN	2	
- 99	60-980000-307	ANGLE,OUTBOARD LH.	1	
	60-980000-308	ANGLE,OUTBOARD RH.	1	
-100	60-980030-1	REINFORCEMENT,OUTBOARD LH.	1	
	60-980030-2	REINFORCEMENT,OUTBOARD RH.	1	
-101	60-980000-9	ANGLE,INBOARD	1	
-102	60-980000-11	ANGLE,OUTBOARD.	1	
-103	60-980000-13	ANGLE,OUTBOARD.	1	
	115005-1	GROMMET	1	
	115005-5	GROMMET	1	
	115005-6	GROMMET	1	
	115005-10	GROMMET	1	

BEECHCRAFT
DUKE B60
ILLUSTRATED PARTS CATALOG



B60-387

B E E C H C R A F T
DUKE B60
I L L U S T R A T E D P A R T S C A T A L O G

GAMA/ATA CODE & INDEX NO.	PART NO.	DESCRIPTION	1 2 3 4 5 6 7							UNITS PER ASSY	USABLE ON CODE	
			1	2	3	4	5	6	7			
10-01 -104	60-980000-15	ANGLE,OUTBOARD.	1	
-105	60-980000-17	ANGLE,OUTBOARD.	1	
-106	60-980000-23	ANGLE,INBOARD	1	
-107	60-980000-25	ANGLE,INBOARD	1	
-108	60-980000-27	ANGLE,INBOARD	1	
-109	60-980000-91	SHIM,OUTBOARD	1	
-110	60-980000-93	SHIM,OUTBOARD	1	
-111	60-980000-95	ANGLE,INBOARD LH.	1	
	60-980000-96	ANGLE,INBOARD RH.	1	
-112	60-980000-201	ANGLE,LH.	1	
	60-980000-202	ANGLE,RH.	1	
-113	60-980000-203	ANGLE,LH.	1	
	60-980000-204	ANGLE,RH.	1	
-114	60-980000-205	ANGLE	2	
	60-980000-289	RUB STRIP	1	
-115	60-980000-211	ANGLE	1	
-116	60-980000-301	DOUBLER,LH.	1	
	60-980000-302	DOUBLER,RH.	1	
-117	60-980000-187	SKIN,UPPER NACELLE LH	1	
	60-980000-188	SKIN,UPPER NACELLE RH	1	

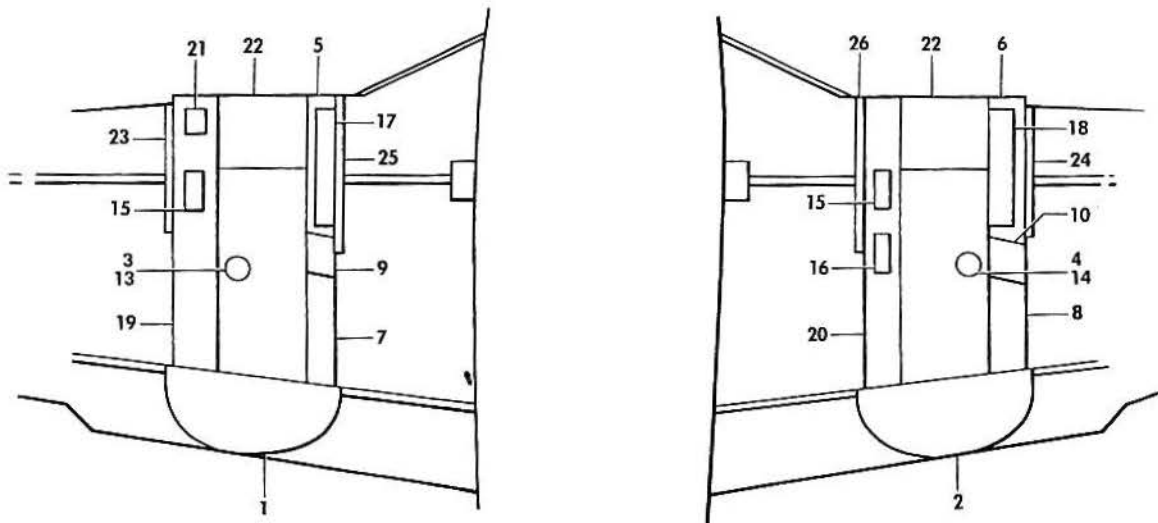
CODES OF EFFECTIVITY

1 P-247 THRU P-301 2 P-247 THRU P-445
3 P-446 AND AFTER

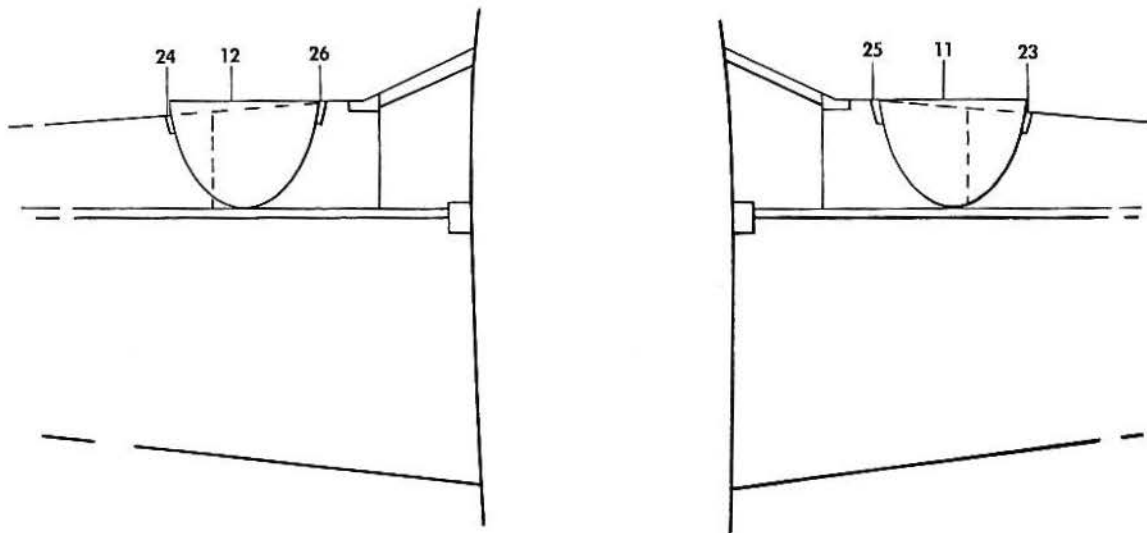
BEECHCRAFT
DUKE B60
ILLUSTRATED PARTS CATALOG

54-30-01
NACELLE SKINS

BEECHCRAFT
DUKE B60
ILLUSTRATED PARTS CATALOG



TOP SIDE



BOTTOM SIDE

B60-38-9

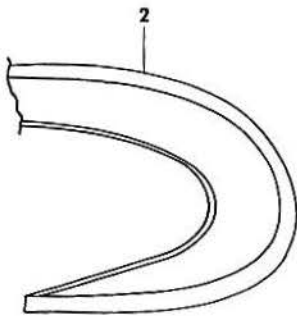
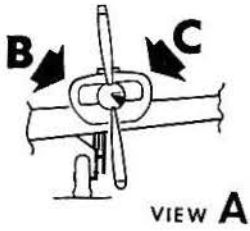
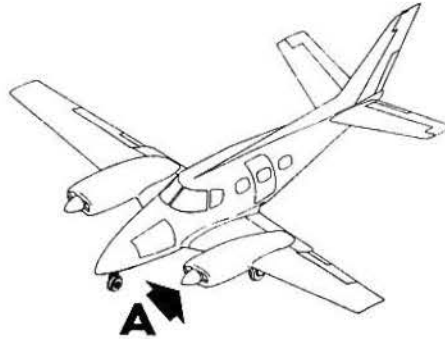
B E E C H C R A F T
DUKE B60
I L L U S T R A T E D P A R T S C A T A L O G

GAMA/ATA CODE & INDEX NO.	PART NO.	DESCRIPTION	1 2 3 4 5 6 7							UNITS PER ASSY	USABLE ON CODE	
30-01 - 1	60-980053-603	SKIN ASSY,AFT UPPER NACELLE LH.	1	
- 2	60-980053-604	SKIN ASSY,AFT UPPER NACELLE RH.	1	
- 3	60-980000-207	SKIN, TOP CENTER LH NACELLE.	1	
- 4	60-980000-208	SKIN, TOP CENTER RH NACELLE.	1	
- 5	60-980000-149	SKIN, UPPER INBD. FWD LH NACELLE.	1	
- 6	60-980000-127	SKIN, UPPER INBD. FWD RH NACELLE.	1	
- 7	60-980000-109	SKIN, UPPER OUTBD LH NACELLE.	1	
- 8	60-980000-119	SKIN, UPPER OUTBD RH NACELLE.	1	
- 9	60-980000-111	DOOR, LH NACELLE FUEL CELL ACCESS.	1	
- 10	60-980000-121	DOOR, RH NACELLE FUEL CELL ACCESS.	1	
- 11	60-980000-65	SKIN, FWD LOWER LH NACELLE.	1	
- 12	60-980000-66	SKIN, FWD LOWER RH NACELLE.	1	
- 13	60-980000-187	SKIN, UPPER NACELLE.	1	
- 14	60-980000-188	SKIN, UPPER NACELLE.	1	
- 15	60-980000-163	DOOR, ACCESS.	1	
- 16	60-980000-157	DOOR, RH ACCESS.	1	
- 17	60-980000-263	DOOR, LH ALTERNATE AIR.	1	
- 18	60-980000-267	DOOR, RH ALTERNATE AIR.	1	
- 19	60-980000-63	SKIN, UPPER NACELLE LH OUTBD.	1	
- 20	60-980000-165	SKIN, UPPER NACELLE RH INBD.	1	
- 21	60-980041-1	DOOR ASSY, EXTERNAL POWER SOURCE.	1	
- 22	60-980000-255	SKIN, UPPER NACELLE.	1	
- 23	60-100014-7	WELD ASSY, LH OUTBD FILLET.	1	
- 24	60-100014-8	WELD ASSY, RH OUTBD FILLET.	1	
- 25	60-100015-7	WELD ASSY, LH INBD FILLET.	1	
- 26	60-100015-8	WELD ASSY, RH INBD. FILLET.	1	

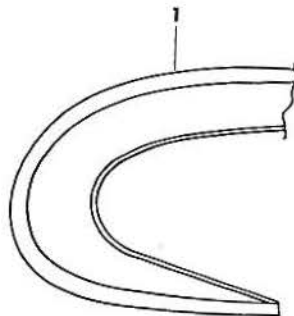
BEECHCRAFT
DUKE 860
ILLUSTRATED PARTS CATALOG

54-50-01
NACELLE FILLET INSTALLATION

BEECHCRAFT
DUKE B60
ILLUSTRATED PARTS CATALOG



VIEW B



VIEW C

B60-388

B E E C H C R A F T
DUKE B60
I L L U S T R A T E D P A R T S C A T A L O G

GAMA/ATA CODE & INDEX NO.	PART NO.	DESCRIPTION							UNITS PER ASSY	USABLE ON CODE	
		1	2	3	4	5	6	7			
50-01	- 1	60-100014	FILLET INSTL,WING NACELLE OUTBOARD.							NP	
		60-100014-7	. WELD ASSY,LH OUTBOARD FILLET.							1	
		60-100014-6	. WELD ASSY,RH OUTBOARD FILLET.							1	
			/ATTACHING PARTS/								
		AN509-8R7	. SCREW							AR	
		NAS1329A08K75	. NUTPLATE.							AR	

	- 2	60-100015	FILLET INSTL,WING NACELLE INBOARD							NP	
		60-100015-7	. WELD ASSY,LH INBOARD FILLET							1	
		60-100015-8	. WELD ASSY,RH INBOARD FILLET							1	
			/ATTACHING PARTS/								
		AN509-8R7	. SCREW							AR	
	NAS1329A08K75	. NUTPLATE.							AR		
