

B E E C H C R A F T
DUKE B6C
I L L U S T R A T E D P A R T S C A T A L O G

LIST OF PAGES & TABLE OF CONTENTS
FOR
CHAPTER 30-00-00 ICE AND RAIN PROTECTION

SYS/SUB-SYS/ CHAP SECTION	PAGE NO.	EFFECTIVE DATE	TABLE OF CONTENTS
30-00-00	1	04/16/82.	LIST OF PAGES & TABLE OF CONTENTS
30-10-01	1	03/20/81.	SURFACE DEICER. P-247 THRU P-307
30-10-01	2	03/20/81	
30-10-01	3	01/08/82	
30-10-01	4	03/20/81	
30-10-01	5	03/20/81	
30-10-01	6	03/20/81	
30-10-01	7	03/20/81	
30-10-02	1	03/20/81.	SURFACE DEICER. P-308 AND AFTER
30-10-02	2	03/20/81	
30-10-02	3	03/20/81	
30-10-02	4	03/20/81	
30-10-02	5	03/20/81	
30-10-02	6	03/20/81	
30-10-02	7	01/08/82	
30-20-01	1	03/20/81.	CABIN AIR INLET ANTI-ICE BOOT INSTALLATION. P-247 THRU P-266
30-20-01	2	03/20/81	
30-20-01	3	03/20/81	
30-30-01	1	03/20/81.	HEATED PITOT MAST/REFERENCES/
30-40-01	1	03/20/81.	WINDSHIELD DEICE/REFERENCES/.
30-40-20	1	03/20/81.	WINDSHIELD DEFROST/REFERENCES/.
30-60-01	1	03/20/81.	PROPELLER DEICER.
30-60-01	2	03/20/81	
30-60-01	3	04/16/82	
30-60-01	4	03/20/81	
30-60-01	5	03/20/81	

BEECHCRAFT
DUKE B60
ILLUSTRATED PARTS CATALOG

30-10-01
SURFACE DEICER
P-247 THRU P-307

BEECHCRAFT
DUKE B60
ILLUSTRATED PARTS CATALOG

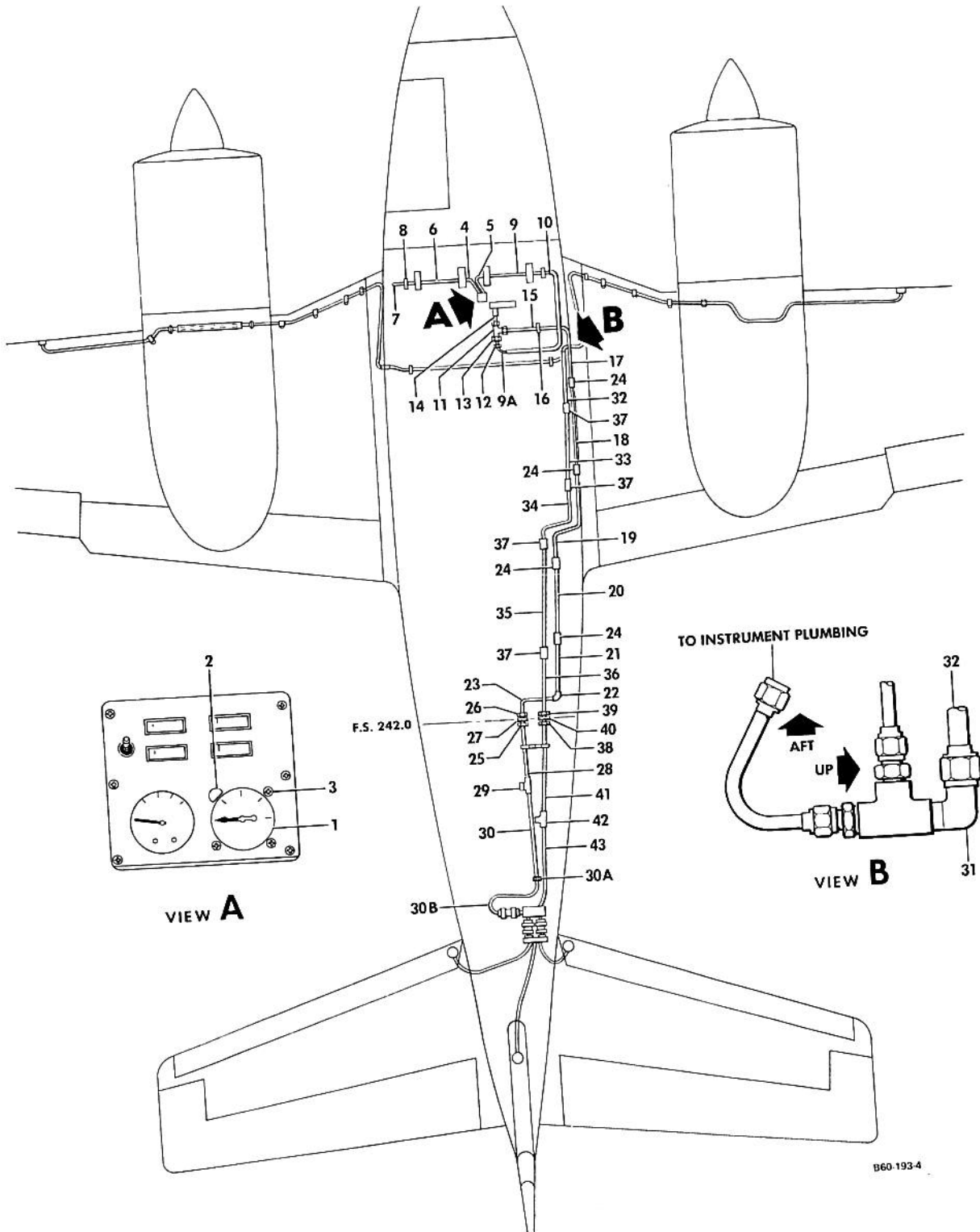
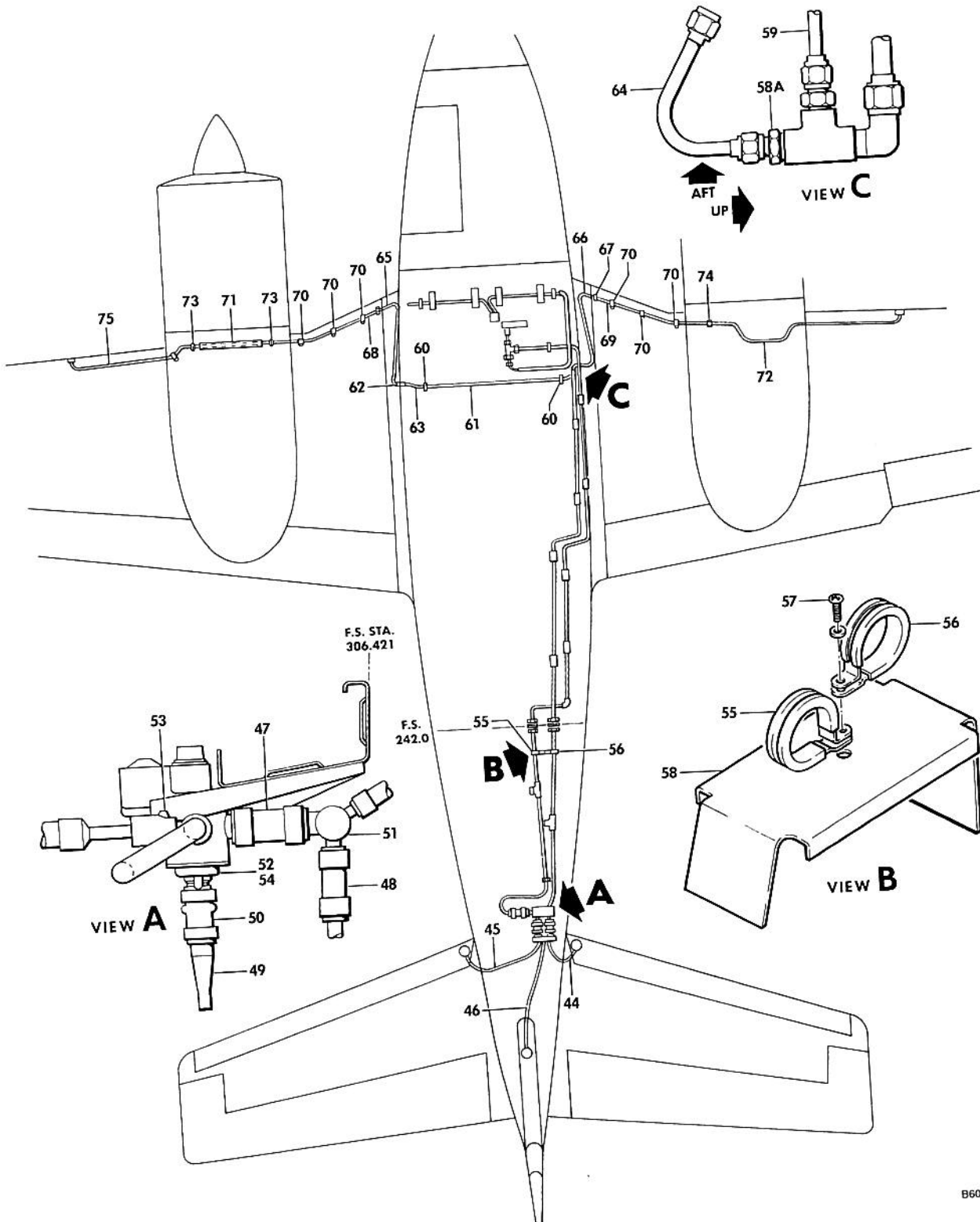


FIGURE 10-01. SURFACE DEICER
/SHEET 1 OF 3 SHEETS/

BEECHCRAFT
DUKE B60
ILLUSTRATED PARTS CATALOG

GAMA/ATA CODE & INDEX NO.	PART NO.	DESCRIPTION							UNITS PER ASSY	USABLE ON CODE
		1	2	3	4	5	6	7		
10-01	60-970011-113	DEICER INSTL, WING AND EMPENNAGE SURFACES							1	1
- 1	50-380105-3	. GAGE, PNEUMATIC PRESSURE.							1	1
		/ATTACHING PARTS/								
- 2	A8970-2-327	. LIGHT, POST.							1	
	R MS33737-16	. NUT /POST LIGHT/.							4	
- 3	R MS246938830	. SCREW							4	
	AN816-4D	. NIPPLE.							1	1
	1K10-2-4	. ADAPTOR							1	1
- 4	60-970011-87	. HOSE.							1	1
- 5	60-970011-85	. HOSE.							1	1
	130292A8	. CLAMP							1	1
- 6	60-970011-67	. TUBE ASSY							4	1
- 7	60-970011-71	. TUBE ASSY							1	1
- 8	AN815-4D	. UNION							1	1
- 9	60-970011-83	. TUBE.							1	1
- 9A	60-970011-77	. TUBE ASSY							1	1
- 10	60-970011-47	. TUBE.							1	1
	130292A6	. CLAMP							1	1
- 11	AN824-10D	. TEE							2	1
- 12	C5015 X 10 X 4	. REDUCER							1	1
- 13	AN818-10D	. NUT							1	1
- 14	60-970011-69	. TUBE ASSY							1	1
- 15	60-970011-115	. TUBE ASSY							1	1
- 16	AN815-10D	. UNION							1	1
- 17	60-970011-117	. TUBE ASSY							1	1
- 18	60-970011-119	. TUBE ASSY							1	1
- 19	60-970011-121	. TUBE ASSY							1	1
- 20	60-970011-123	. TUBE ASSY							1	1
- 21	60-970011-125	. TUBE ASSY							1	1
- 22	AN821-10D	. ELBOW							1	1
- 23	60-970011-127	. TUBE ASSY							1	1
- 24	106200H10-10	. HOSE.							1	1
	AN737TW34	. CLAMP							4	1
- 25	AN832-10D	. UNION							8	1
- 26	AN924-10D	. NUT							1	1
- 27	AN960-1416L	. WASHER.							1	1
- 28	60-970011-145	. TUBE ASSY							2	1
- 29	AN834-10D	. TEE							1	1
	AN929-10	. CAP							1	1
- 30	60-970011-9	. TUBE ASSY							1	1
- 30A	AN919-20D	. REDUCER							1	1
- 30B	60-970011-7	. TUBE ASSY							1	1
- 31	AN822-8D	. ELBOW							1	1
- 32	60-970011-133	. TUBE ASSY							1	1
- 33	60-970011-135	. TUBE.							1	1
- 34	60-970011-137	. TUBE.							1	1
- 35	60-970011-141	. TUBE.							1	1
- 36	60-970011-143	. TUBE ASSY							1	1
- 37	106200H8-10	. HOSE.							1	1
	AN737TW26-30	. CLAMP							4	1
- 38	AN832-8D	. UNION							8	1
- 39	AN924-8D	. NUT							1	1
- 40	AN960-1216L	. WASHER.							1	1
- 41	60-970011-25	. TUBE ASSY							2	1
- 42	AN824-8D	. TEE							1	1
- 43	60-970011-23	. TUBE ASSY							1	1

BEECHCRAFT
DUKE B60
ILLUSTRATED PARTS CATALOG



B60-193-5

B E E C H C R A F T
DUKE B60
I L L U S T R A T E D P A R T S C A T A L O G

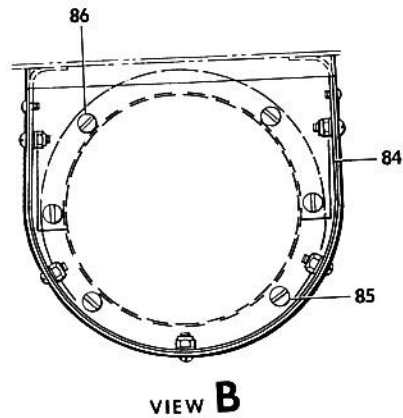
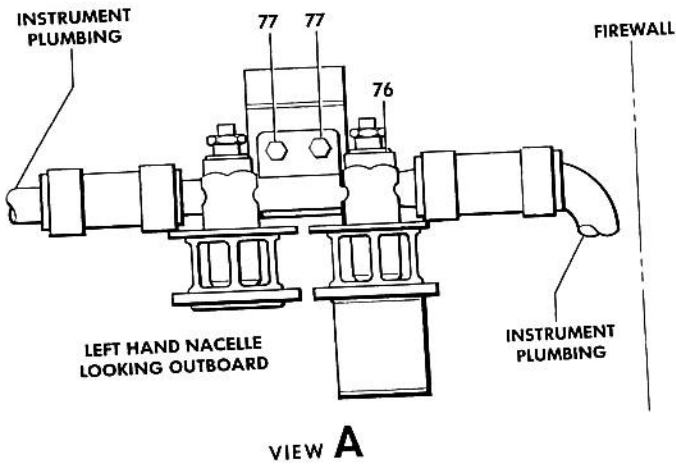
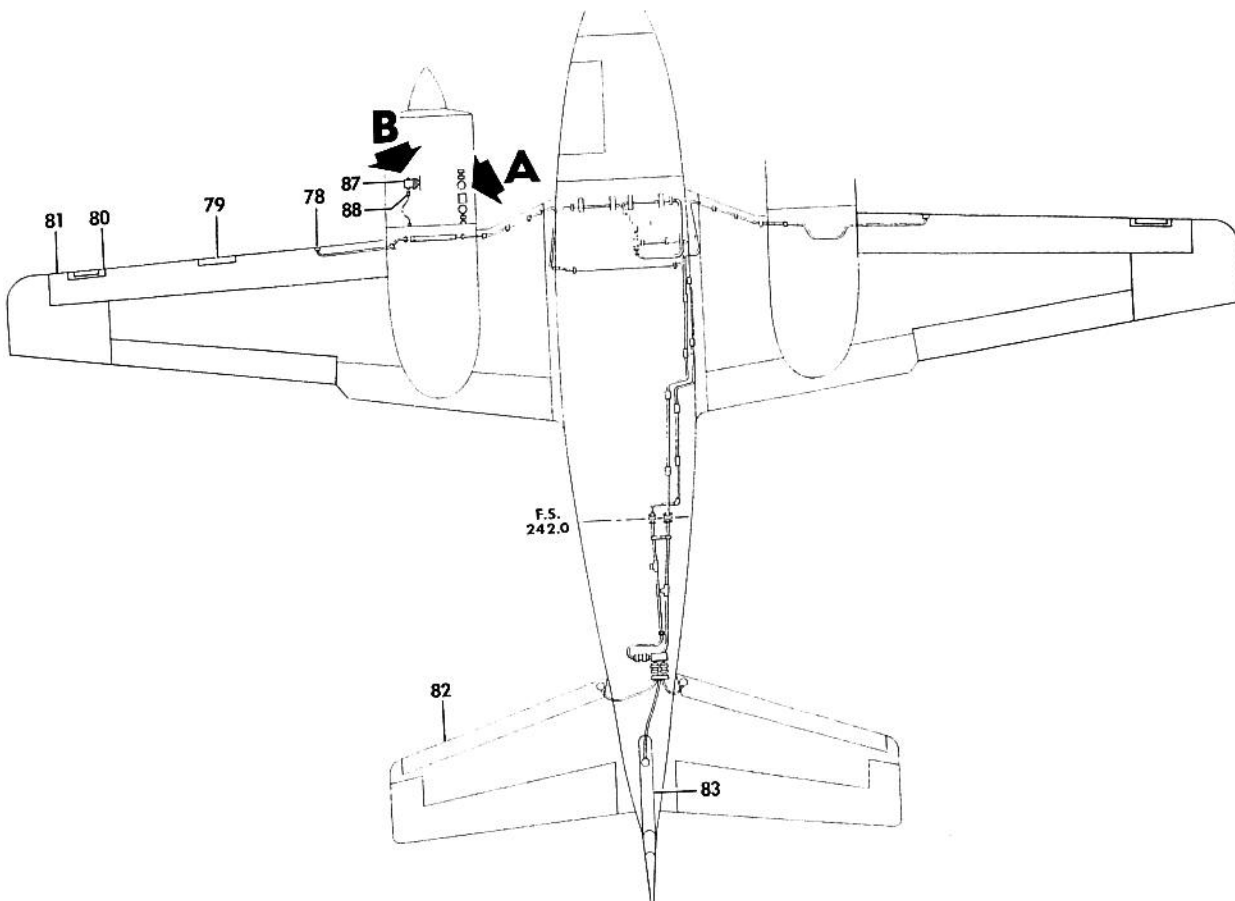
GAMA/ATA CODE & INDEX NO.	PART NO.	DESCRIPTION							UNITS PER ASSY	USABLE ON CODE	
		1	2	3	4	5	6	7			
10-01 - 44	60-970011-5	. TUBE.	1	1
- 45	60-970011-3	. TUBE.	1	1
- 46	60-970011-73	. GROMMET	2	1
	60-970011-1	. TUBE.	1	1
	130292A8	. CLAMP	1	1
- 47	106200H12-10	. HOSE.	6	1
	AN737TW38	. CLAMP	3	1
- 48	106200H8-10	. HOSE.	2	1
	AN737TW26-30	. CLAMP	1	1
- 49	50-970101-115	. TUBE ASSY	2	1
- 50	106200H12-8	. HOSE.	1	1
	AN737RM38	. CLAMP	1	1
- 51	60-970012-11	. MANIFOLD ASSY	2	1
- 52	38E63-1A	. VALVE	1	1
		/ATTACHING PARTS/							1	1	
- 53	AN3H3A	. BOLT.	2	
- 54	AN502-10-8	. SCREW	1	
	AN960-10	. WASHER.	6	

- 55	MS21919DG10	. CLAMP	1	1
- 56	MS21919DG8	. CLAMP	1	1
		/ATTACHING PARTS/							1	1	
- 57	MS35207-263	. SCREW	1	
	AN960-10L	. WASHER.	1	
	130909N29	. NUT	1	

- 58	60-970011-75	. BRACKET	1	1
- 58A	AN816-6-6D	. NIPPLE.	2	1
- 59	60-970011-131	. TUBE ASSY	1	1
- 60	AN815-6D	. UNION	2	1
- 61	60-970011-45	. TUBE ASSY	1	1
- 62	AN833-6D	. ELBOW	1	1
	AN960-916L	. WASHER.	1	1
	AN924-6D	. NUT	2	1
- 63	60-970011-81	. TUBE ASSY	1	1
- 64	60-970011-129	. TUBE ASSY	1	1
- 65	60-970011-43	. TUBE ASSY	1	1
- 66	60-970011-51	. TUBE ASSY	1	1
- 67	AN815-6D	. UNION	1	1
	MS35489-93	. GROMMET	2	1
- 68	60-970011-41	. TUBE ASSY	1	1
- 69	60-970011-53	. TUBE ASSY	1	1
- 70	AN742D6	. CLAMP	1	1
		/ATTACHING PARTS/							3	1	
	MS35206-245	. SCREW	6	
	AN960-8	. WASHER.	6	

- 71	60-970011-39	. TUBE ASSY	1	1
	131545S9-0205	. SLEEVE, FIRE.	1	1
- 72	60-970011-55	. TUBE ASSY	1	1
- 73	115005-2	. GROMMET	1	1
- 74	AN832-6D	. UNION	2	1
	AN960-916	. WASHER.	1	1
	AN924-6D	. NUT	2	1
- 75	60-970011-37	. TUBE.	1	1
	AN737TW24	. CLAMP	1	1
		-----							2	1	

BEECHCRAFT
DUKE B60
ILLUSTRATED PARTS CATALOG



B60-193-6

B E E C H C R A F T
DUKE B60
I L L U S T R A T E D P A R T S C A T A L O G

GAMA/ATA CODE & INDEX NO.	PART NO.	DESCRIPTION							UNITS PER ASSY	USABLE ON CODE
		1	2	3	4	5	6	7		
10-01 - 76	IH22-11	• VALVE, PRESSURE RELIEF.							2	1
		/ATTACHING PARTS/								
- 77	130909B21	• BOLT.							2	
	100696D-ZL020	• SPACER.							2	
	106200H10-10	• HOSE.							2	
	MS35489-11	• GROMMET							1	1
- 78	190-1	• DETECTOR UNIT, LIFT							1	1
	3E1793	• DETECTOR UNIT, LIFT /ALTERNATE/							1	2
	190-3	• DETECTOR UNIT, LIFT							1	2
- 79	130421-01050	• STRIP, LH WING STALL							1	3
	130421-00762	• STRIP, RH WING STALL							1	1
- 80	95-970000-179	• RETAINER, LH WING LANDING LIGHT LENS.							1	1
	95-970000-180	• RETAINER, RH WING LANDING LIGHT LENS.							1	1
- 81	25S7D5057-01	• BOOT, LH WING DEICER.							1	1
	60-380000-7	• BOOT, LH WING DEICER							1	5
	25S7D5057-02	• BOOT, RH WING DEICER.							1	4
	60-380000-8	• BOOT, RH WING DEICER							1	5
- 82	25S7D5057-05	• BOOT, LH HORIZONTAL STABILIZER DEICER.							1	4
	25S7D5057-06	• BOOT, RH HORIZONTAL STABILIZER DEICER.							1	1
- 83	25S7D5057-10	• BOOT, VERTICAL STABILIZER DEICER.							1	1
	60-500024-15	• SHROUD INSTL, AIR PUMP.							1	1
- 84	60-500037	• SHROUD ASSY							2	1
		/ATTACHING PARTS/							1	1
- 85	AN502-10-4	• SCREW							4	
- 86	AN502-10-6	• SCREW							8	
	60-329016-1	PUMP INSTALLATION, INSTRUMENT AIR							1	
- 87	442CW	• PUMP.							2	1
- 88	AN816-12-8D	• NIPPLE.							1	1

CODES OF EFFECTIVITY

- | | | | |
|---|------------------|---|------------------|
| 1 | P-247 THRU P-307 | 2 | P-247 THRU P-266 |
| 3 | P-267 THRU P-307 | 4 | P-247 THRU P-252 |
| 5 | P-253 THRU P-307 | | |

BEECHCRAFT
DUKE B60
ILLUSTRATED PARTS CATALOG

30-10-02
SURFACE DEICER
P-308 AND AFTER

BEECHCRAFT
DUKE B60
ILLUSTRATED PARTS CATALOG

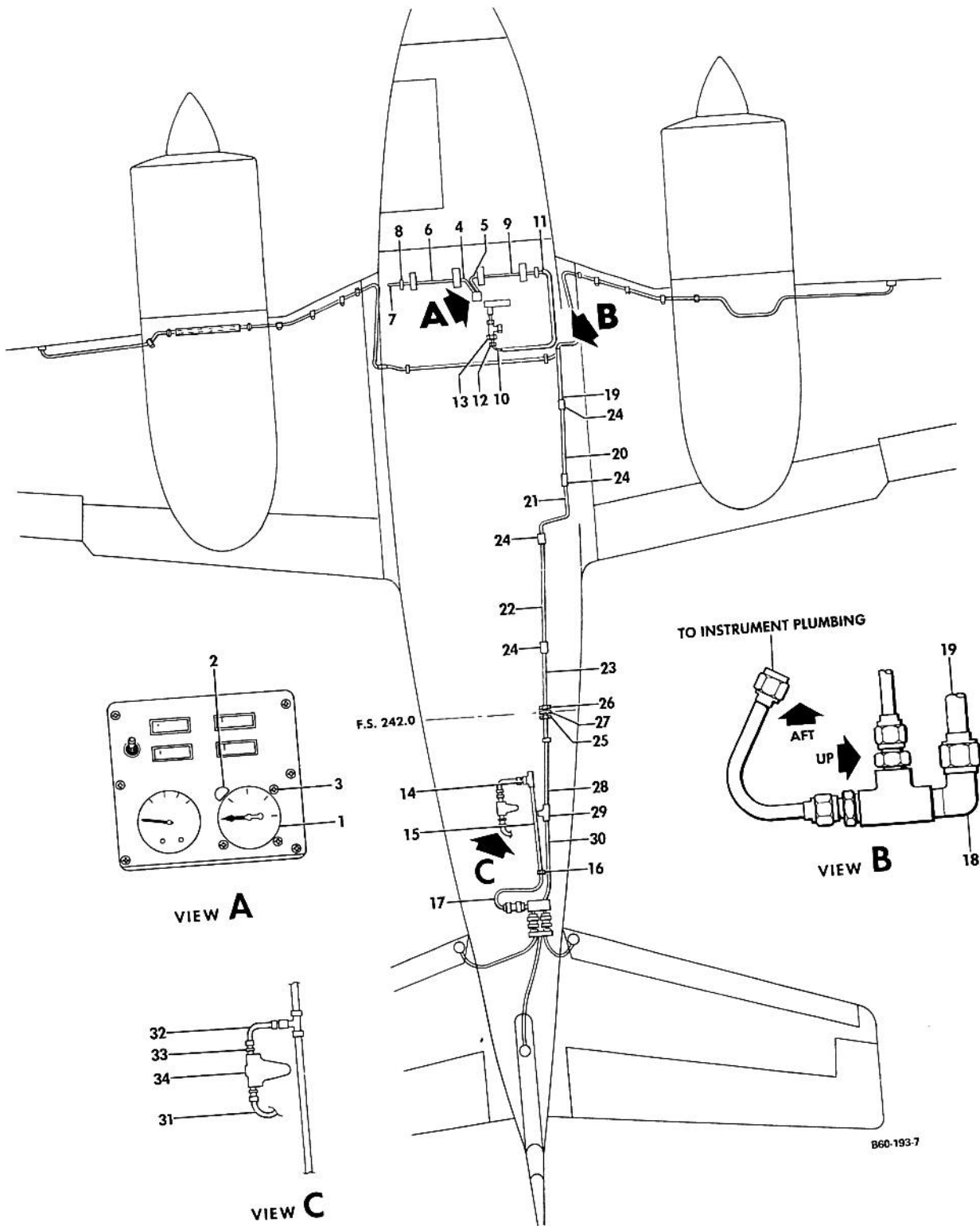


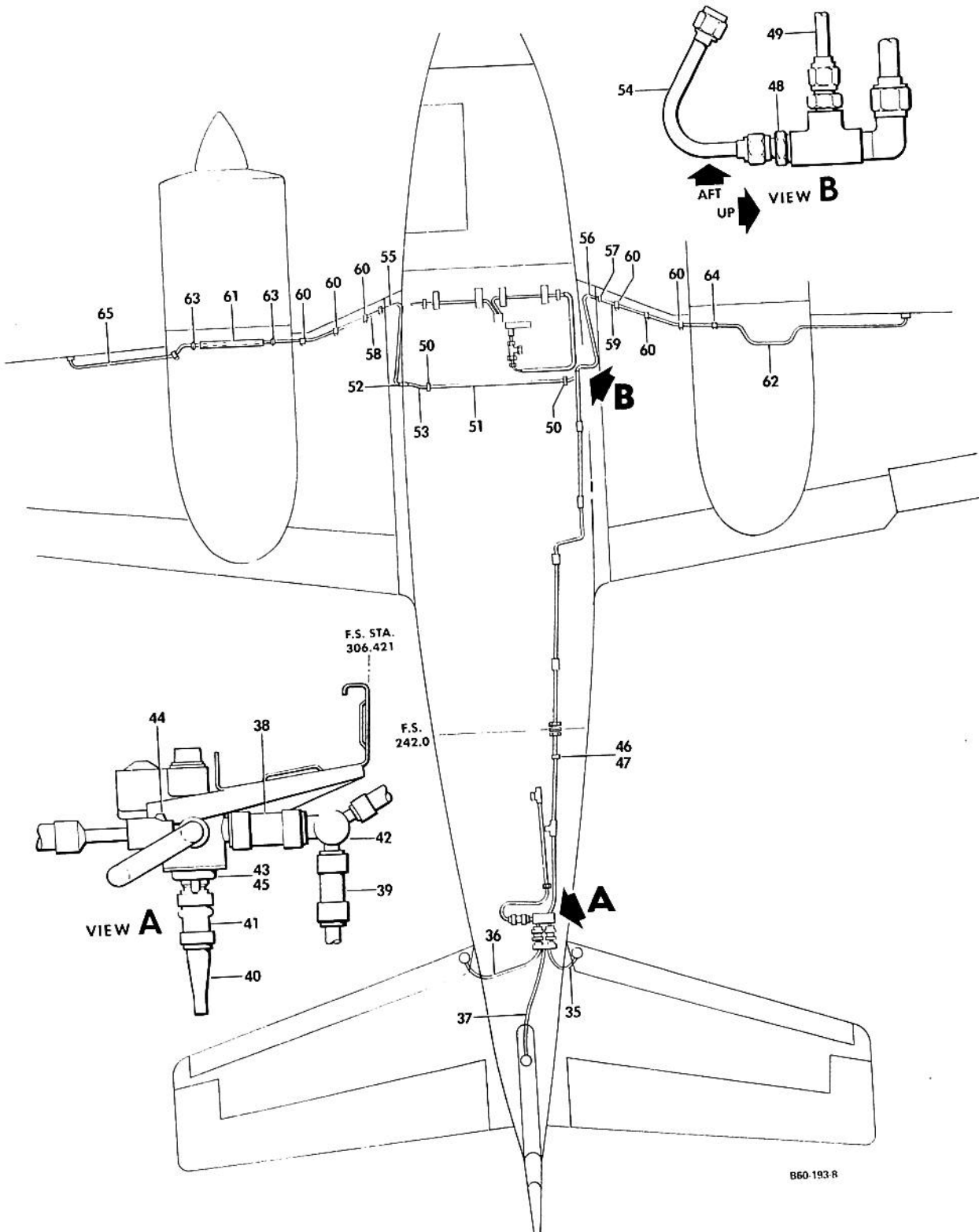
FIGURE 10-02. SURFACE DEICER
/SHEET 1 OF 3 SHEETS/

03/20/81

B E E C H C R A F T
DUKE B60
I L L U S T R A T E D P A R T S C A T A L O G

GAMA/ATA CODE & INDEX NO.	PART NO.	DESCRIPTION	1 2 3 4 5 6 7							UNITS PER ASSY	USABLE ON CODE
			1	2	3	4	5	6	7		
10-02	60-970011-113	DEICER INSTL, WING AND EMPENNAGE SURFACES.								NP	4
	60-970011-159	DEICER INSTL, WING & EMPENNAGE/WET WING TIP/								NP	3
- 1	50-380105-3	• GAGE, PNEUMATIC PRESSURE								1	1
		• /ATTACHING PARTS/									
- 2	A8970-2-327	• LIGHT, POST.								1	
	A8943-632-24J	• NUT/POST LIGHT/								3	
- 3	AN507B632R12	• SCREW								3	
		• *									
	AN737RM38	• CLAMP								4	3
	AN816-4D	• NIPPLE								1	1
	1K10-2-4	• ADAPTOR								1	1
- 4	60-970011-87	• HOSE								1	1
- 5	60-970011-85	• HOSE								1	1
	130292A8	• CLAMP								1	1
- 6	60-970011-67	• TUBE ASSY								4	1
- 7	60-970011-71	• TUBE ASSY								1	1
- 8	AN815-4D	• UNION								1	1
- 9	60-970011-83	• TUBE								1	1
- 10	60-970011-77	• TUBE ASSY								1	1
- 11	60-970011-47	• TUBE								1	1
	130292A6	• CLAMP								1	1
- 12	C5015X10X4	• REDUCER								2	1
- 13	AN818-10D	• NUT								1	1
- 14	AN834-10D	• TEE								1	1
- 15	60-970011-9	• TUBE ASSY								1	1
- 16	AN919-20D	• REDUCER								1	4
- 17	60-970011-7	• TUBE ASSY								1	4
	60-970011-155	• TUBE ASSY								1	4
- 18	AN822-8D	• ELBOW								1	3
- 19	60-970011-133	• TUBE ASSY								1	1
- 20	60-970011-135	• TUBE								1	1
- 21	60-970011-137	• TUBE								1	1
- 22	60-970011-141	• TUBE								1	1
- 23	60-970011-143	• TUBE ASSY								1	1
- 24	106200H8-10	• HOSE								1	1
	AN737TW26-30	• CLAMP								4	1
- 25	AN832-8D	• UNION								8	1
- 26	AN924-8D	• NUT								1	1
- 27	AN960-1216L	• WASHER								1	1
- 28	60-970011-25	• TUBE ASSY								2	1
- 29	AN815-8D	• UNION								1	1
- 30	60-970011-151	• TUBE ASSY								1	1
	60-540037-29	• REGULATOR INSTL/REPLACES STANDARD PLUMBING/								1	1
- 31	60-540037-23	• TUBE ASSY								NP	1
- 32	60-540037-25	• TUBE ASSY								1	1
- 33	AN816-7D	• NIPPLE								1	1
- 34	50-324377-3	• REGULATOR								2	1
		•								1	1

BEECHCRAFT
DUKE B60
ILLUSTRATED PARTS CATALOG



B60-193-R

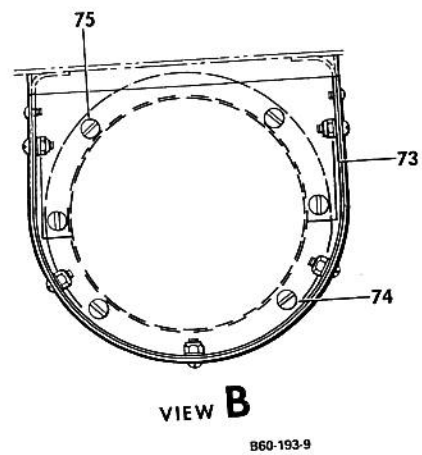
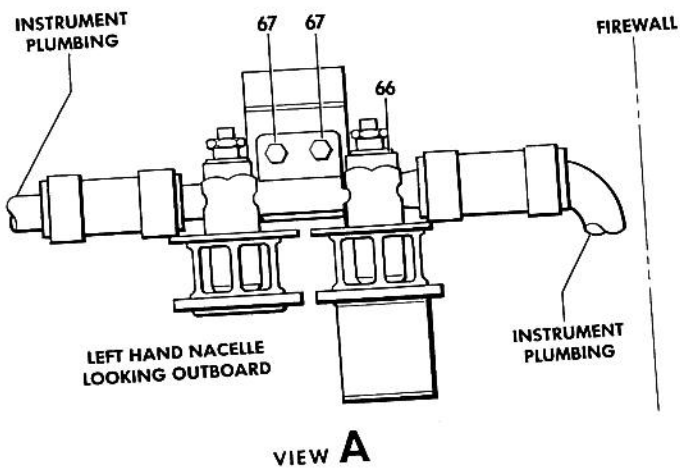
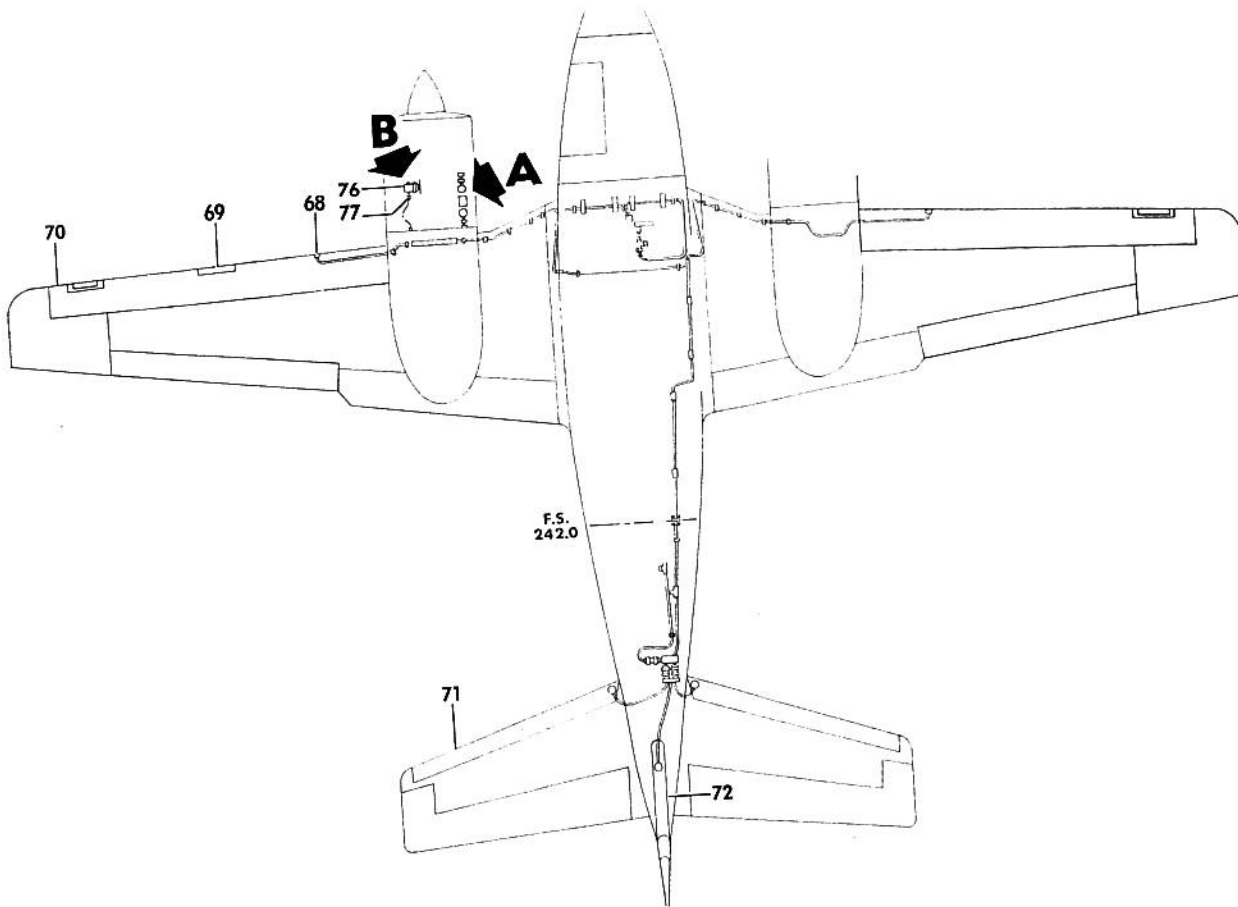
FIGURE 10-02. SURFACE DEICER
/SHEET 2 OF 3 SHEETS/

03/20/81

B E E C H C R A F T
DUKE B60
I L L U S T R A T E D P A R T S C A T A L O G

GAMA/ATA CODE & INDEX NO.	PART NO.	DESCRIPTION							UNITS PER ASSY	USABLE ON CODE
		1	2	3	4	5	6	7		
- 35	60-970011-161	•	TUBE ASSY/SUPERSEDES 60-970011-5/						1	1
- 36	60-970011-163	•	TUBE ASSY/SUPERSEDES 60-970011-3/						1	1
- 37	60-970011-73	•	GROMMET						2	1
	60-970011-1	•	TUBE						1	1
	130292A8	•	CLAMP						1	1
- 38	106200H12-10	•	HOSE						6	1
	106200H10-10	•	HOSE						3	4
	AN737TW38	•	CLAMP						2	3
- 39	106200H8-10	•	HOSE						6	4
	AN737TW26-30	•	CLAMP						1	1
- 40	50-970101-115	•	TUBE ASSY						2	1
- 41	106200H12-8	•	HOSE						1	4
	AN737RM38	•	CLAMP						1	4
	60-970011-157	•	BRACKET, MANIFOLD & VALVE						2	4
- 42	60-970012-11	•	MANIFOLD ASSY						1	3
	60-970012-19	•	MANIFOLD ASSY						1	4
- 43	38E63-1A	•	VALVE						1	3
	2H59-4	•	VALVE						1	4
			/ATTACHING PARTS/						1	3
- 44	AN3H3A	•	BOLT						2	4
	130909B14	•	BOLT						2	3
- 45	AN502-10-8	•	SCREW						1	4
	AN960-10	•	WASHER						6	4
	MS21042-L3	•	NUT						2	3
- 46	MS21919DG8	•	CLAMP						1	1
			/ATTACHING PARTS/						1	1
- 47	MS35207-263	•	SCREW						1	
	AN960-10L	•	WASHER						1	
	130909N29	•	NUT						1	
- 48	AN816-6-6D	•	NIPPLE						2	1
- 49	60-970011-131	•	TUBE ASSY						1	1
- 50	AN8156D	•	UNION						2	1
- 51	60-970011-45	•	TUBE ASSY						1	1
- 52	AN833-6D	•	ELBOW						1	1
	AN960-916L	•	WASHER						2	1
	AN924-6D	•	NUT						1	1
- 53	60-970011-81	•	TUBE ASSY						1	1
- 54	60-970011-129	•	TUBE ASSY						1	1
- 55	60-970011-43	•	TUBE ASSY						1	1
- 56	60-970011-51	•	TUBE ASSY						1	1
- 57	AN815-6D	•	UNION						2	1
	MS35489-93	•	GROMMET						1	1
- 58	60-970011-41	•	TUBE ASSY						1	1
- 59	60-970011-53	•	TUBE ASSY						1	1
- 60	AN742D6	•	CLAMP						1	1
			/ATTACHING PARTS/						3	1
	MS35206-245	•	SCREW						6	
	AN960-8	•	WASHER						6	
- 61	60-970011-39	•	TUBE ASSY						1	1
- 62	60-970011-101	•	SLEEVE, FIRE						1	1
- 63	60-970011-55	•	TUBE ASSY						1	1
- 64	115005-2	•	GROMMET						2	1
	AN832-6D	•	UNION						1	1
	AN960-916	•	WASHER						2	1
	AN924-6D	•	NUT						1	1
- 65	60-970011-37	•	TUBE						1	1
	AN737TW24	•	CLAMP						2	1

BEECHCRAFT
DUKE B60
ILLUSTRATED PARTS CATALOG



BEECHCRAFT
DUKE 860
ILLUSTRATED PARTS CATALOG

GAMA/ATA CODE & INDEX NO.	PART NO.	DESCRIPTION							UNITS PER ASSY	USABLE ON CODE
		1	2	3	4	5	6	7		
- 66	2H22-11	• VALVE,PRESSURE RELIEF/SPARES FOR 1H22-11/							2	1
		/ATTACHING PARTS/								
- 67	130909821	• BOLT.							2	
	1006960-ZL020	• SPACER.							2	
	106200H10-10	• HOSE.							2	
	MS35489-11	• GROMMET							2	1
- 68	190-3	• DETECTOR UNIT,LIFT.							1	1
	191-52	• DETECTOR UNIT,LIFT.							1	7
- 69	130421-01050	• STRIP,LH WING STALL							1	6
	130421-00762	• STRIP,RH WING STALL							1	1
- 70	25S705057-01	• BOOT,LH WING DEICER							1	1
	25S-705057-11	• BOOT,LH WING DEICER							1	5
	25S705057-02	• BOOT,RH WING DEICER							1	2
	25S-705057-12	• BOOT,RH WING DEICER							1	5
- 71	25S705057-05	• BOOT,LH HORIZONTAL STABILIZER DEICER.							1	2
	25S705057-06	• BOOT,RH HORIZONTAL STABILIZER DEICER.							1	1
- 72	25S705057-10	• BOOT,VERTICAL STABILIZER DEICER							1	1
	60-500024-15	• SHROUD INSTL,AIR PUMP							1	1
- 73	60-500037	• SHROUD ASSY							NP	1
		/ATTACHING PARTS/							1	1
- 74	AN502-10-4	• SCREW							4	
- 75	AN502-10-6	• SCREW							8	
	58-361013-11	• DETECTOR INSTL,STALL WARNING/FOR USE WITH							NP	6
		SURFACE DEICE/SEE 57-10-02/								
	IN4005	• DIODE,STALL WARNING							1	6
	50-380048-1	• RELAY,STALL WARNING							1	6
	RH50-16 UHM	• RESISTOR,STALL WARNING.							1	6
		/ATTACHING PARTS/							1	6
	MS35206-214	• SCREW							2	
	AN960-4	• WASHER.							2	
	MS21042-04	• NUT							2	
	60-329016-1	PUMP INSTALLATION,INSTRUMENT AIR.							NP	1
- 76	442CW	• PUMP.							2	1
- 77	AN816-12-8D	• NIPPLE.							1	1
	R B3-1-2	• MOUNTING GASKET							1	8
	R A9-6-14	• SPACER.							2	8

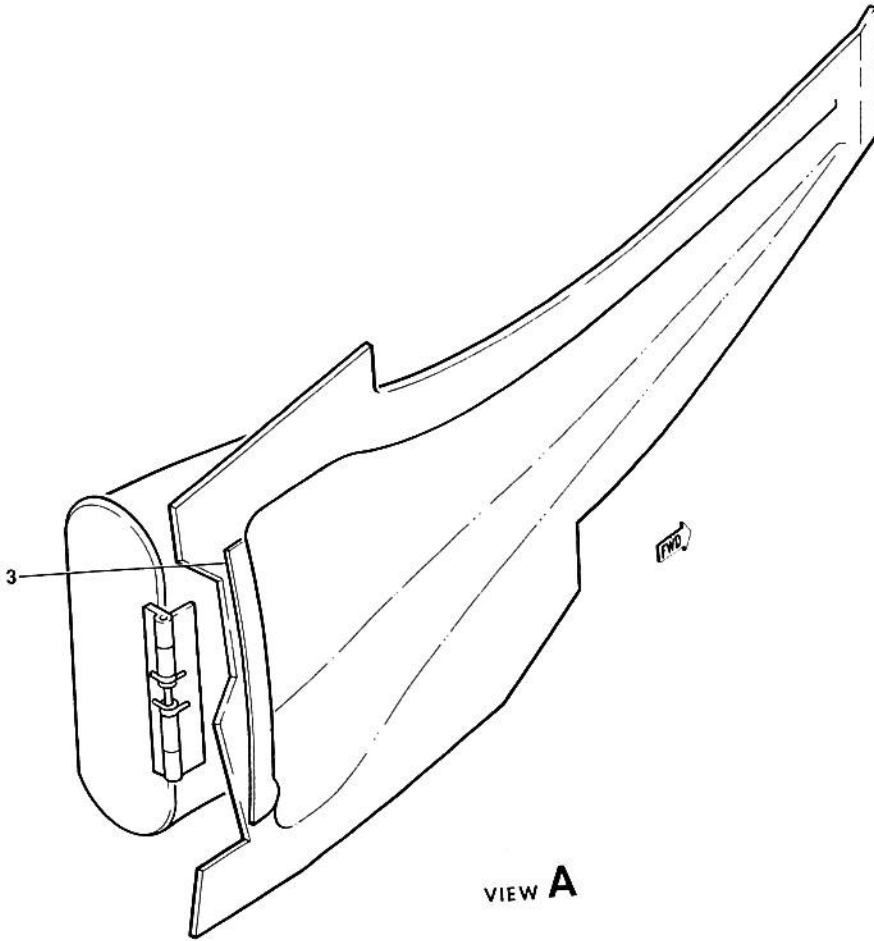
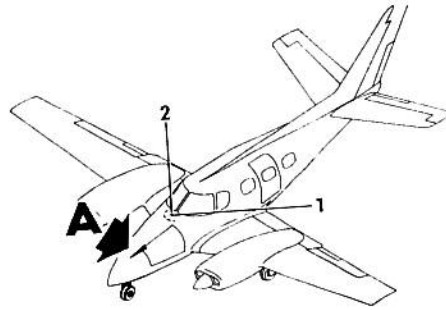
CODES OF EFFECTIVITY

- | | | | |
|---|------------------|---|---------------------|
| 1 | P-308 AND AFTER | 2 | P-348,P-365 & AFTER |
| 3 | P-379 AND AFTER | 4 | P-308 THRU P-378 |
| 5 | P-308 THRU P-347 | 6 | P-447 AND AFTER |
| | P-349 THRU P-364 | | |
| 7 | P-308 THRU P-446 | 8 | P-302 THRU P-329 |

BEECHCRAFT
DUKE B60
ILLUSTRATED PARTS CATALOG

30-20-01
CABIN AIR INLET ANTI-ICE BOOT INSTALLATION
P-247 THRU P-266

BEECHCRAFT
DUKE B60
ILLUSTRATED PARTS CATALOG



B60-193-3

BEECHCRAFT
DUKE B60
ILLUSTRATED PARTS CATALOG

30-30-01
HEATED PITOT MAST/REFERENCES/
SEE CHAPTER 34 FOR HEATED PITOT MAST

B E E C H C R A F T
DUKE B60
I L L U S T R A T E D P A R T S C A T A L O G

30-40-01
WINDSHIELD DEICE/REFERENCES/
SEE CHAPTER 30 IN WIRING MANUAL
FOR ELECTRICAL COMPONENTS
AND CHAPTER 56-10-01 FOR PART NUMBER.

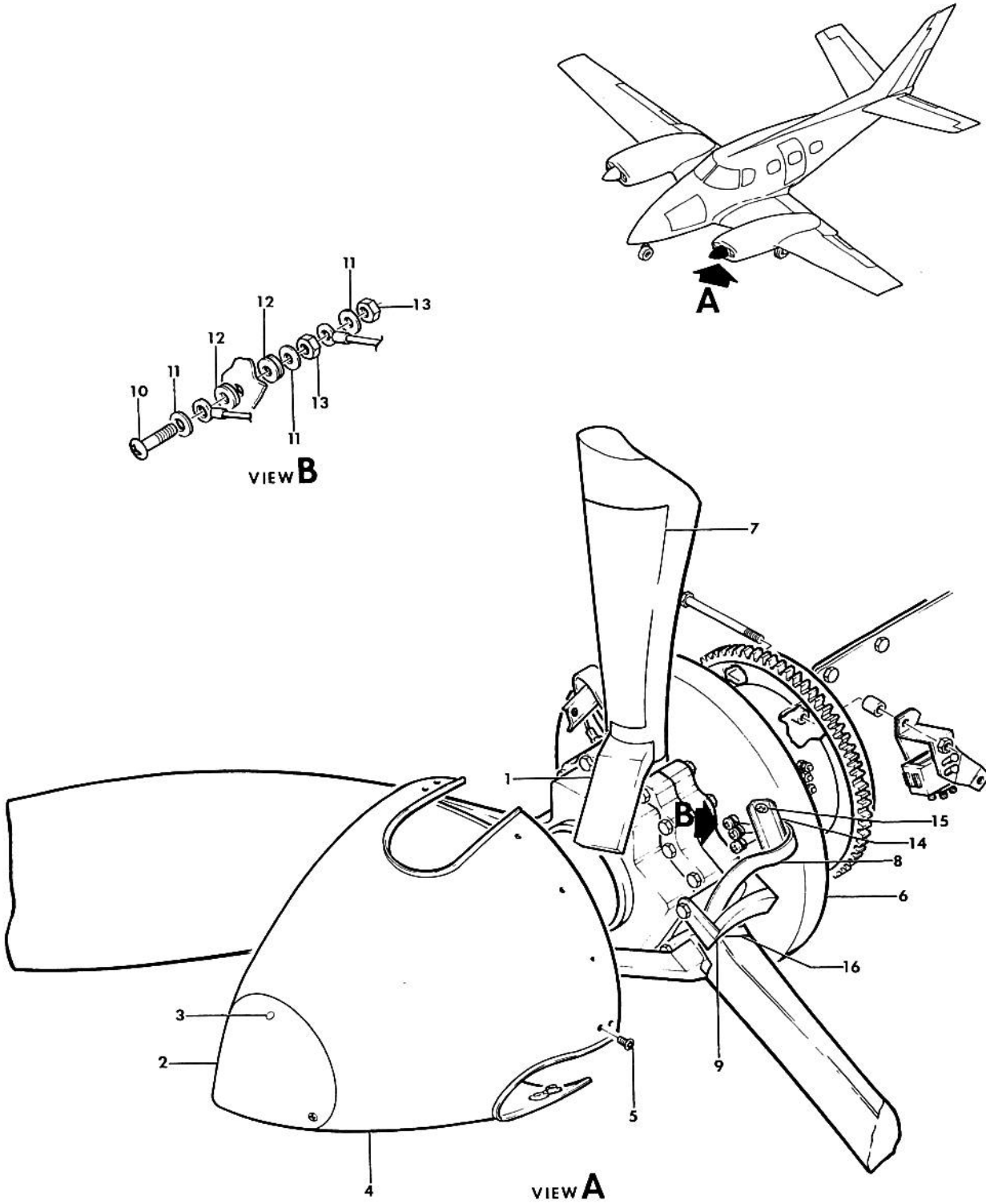
B E E C H C R A F T
DUKE B60
I L L U S T R A T E D P A R T S C A T A L O G

30-40-20
WINDSHIELD DEFRUST/REFERENCES/
SEE CHAPTER 21 FOR WINDSHIELD DEFROST

B E E C H C R A F T
DUKE 860
I L L U S T R A T E D P A R T S C A T A L O G

30-60-01
PROPELLER DEICER

BEECHCRAFT
DUKE B60
ILLUSTRATED PARTS CATALOG

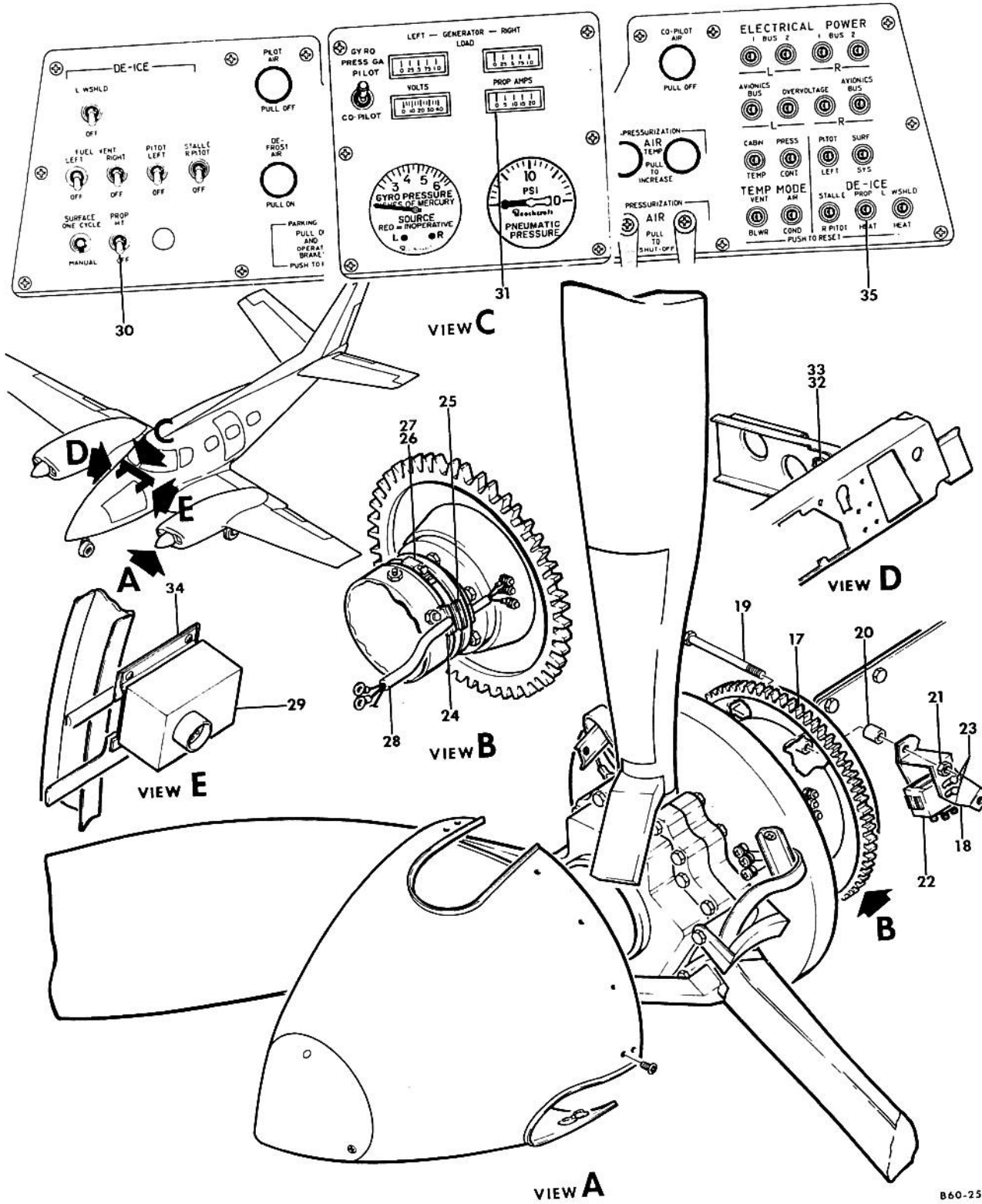


860-251-14

BEECHCRAFT
DUKE B60
ILLUSTRATED PARTS CATALOG

GAMA/ATA CODE & INDEX NO.	PART NO.	DESCRIPTION	I 2 3 4 5 6 7							UNITS PER ASSY	USABLE ON CODE
			I	2	3	4	5	6	7		
60-01	96-960018-1	DEICER INSTL,3 BLADED PROP.								NP	7
	96-960018-7	DEICER INSTL,3 BLADED PROP.								NP	8
	60-960000-9	. PROPELLER INSTL,ELECTRIC DEICER								NP	1
	60-960000-17	. PROPELLER INSTL,ELECTRIC DEICER								NP	2
	60-960000-19	. PROPELLER INSTL,ELECTRIC DEICER								NP	8
- 1	HCF3YR2FFFC7449 * 82R	. PROPELLER ASSY/SEE CHAPTER 61-10-01/.								2	5
	HCF3YR2UFFC747 * 982R	. PROPELLER ASSY/SEE CHAPTER 61-10-01/.								2	6
	HCF3YR2UFFC747 * 9K2R	. PROPELLER ASSY/SEE CHAPTER 61-10-01/.								2	8
	R C3273P	. . . SPINNER ASSY,3 BLADE.								2	
- 2	R C3275P	. . . CAP,SPINNER								1	
		/ATTACHING PARTS/									
- 3	AN526C1032R7	. . . SCREW								3	
- 4	R C3274P	. . . DOME,SPINNER.								1	
		/ATTACHING PARTS/									
- 5	AN526C1032R7	. . . SCREW								21	
- 6	C3267	. . . BULKHEAD,SPINNER.								1	
	77-040-1	. . . DEICER KIT.								1	1
	77-045-1	. . . DEICER KIT.								1	2
	67-240-1	. . . DEICER KIT.								1	8
- 7	4E1188-3	. . . PROP DEICER								3	1
	4E1601-7	. . . PROP DEICER								3	2
	4E2271-10	. . . PROP DEICER								3	8
- 8A	4E1967-1	. . . DEICER WIRE HARNESS/DETACHABLE/								3	2
	3E2050	. . . DEICER WIRE HARNESS/DETACHABLE/								3	8
- 9	4E1513	. . . STRAP,RESTRAINER LEAD								3	
- 10	6-32X7/8	. . . SCREW								6	7
	6-32X3/4	. . . SCREW								6	8
- 11	MS35333-37	. . . WASHER.								18	
- 12	2E1260	. . . BUSHING								12	
- 13	MS35649-265	. . . NUT								12	
- 14	3E1271-2	. . . CLIP,LEAD								3	
		/ATTACHING PARTS/									
- 15	AN500AD6-8	. . . SCREW								6	
	AN960C6	. . . WASHER.								12	
	MS21045-06	. . . NUT								6	
- 16	MS17821-3-9	. . . STRAP,TIE								3	

BEECHCRAFT
DUKE B60
ILLUSTRATED PARTS CATALOG



B60-251-15

B E E C H C R A F T
DUKE B60
I L L U S T R A T E D P A R T S C A T A L O G

GAMA/ATA CODE & INDEX NO.	PART NO.	DESCRIPTION							UNITS PER ASSY	USABLE ON CODE
		1	2	3	4	5	6	7		
60-01	77-040-2	1	3
	77-045-2	1	4
		77-040-2 PROP DEICER KIT/								
	67-240-2	1	8
- 17	4E1637-2	1	7
	5E1934	1	8
- 18	4E1633	1	7
	4E1678	1	8
		/ATTACHING PARTS/								
	AN503-6-8	1	7
- 19	AN4-34A	1	8
- 20	2E1265	1	
	AN960C416L	1	
- 21	MS21045-4	1	

	2E1624	1	8
- 22	3E2151	1	8
	2E1212	1	8
- 23	AN500AD6-4	3	8
	MS35333-37	3	8
- 24	2E1306	3	
- 25	2E1307	6	
- 26	QS200M88S	2	
- 27	3E1557	3	
- 28	3E1556	3	7
	3E2149	3	8
- 29	3E1150-10	1	7
	3E1964-3	1	8
- 30	35-380053-7	1	
	35-380052	1	
- 31	60-384023-1	1	
- 32	MA751T250	1	
		/ATTACHING PARTS/								
- 33	AN520-10R6	2	
	AN960-10L	2	

- 34	96-960017-5	1	7
- 35	D7271-8-20	1	

C O D E S O F E F F E C T I V I T Y

1	P-247 THRU P-309	2	P-310 THRU P-578
3	P-247 THRU P-340	4	P-341 THRU P-578
5	P-247 THRU P-384, P-387 AND P-402	6	P-385, P-386, P-388 THRU P-401, P-403 THRU P-578
7	P-247 THRU P-578	8	P-579 AND AFTER

