

B E E C H C R A F T
DUKE 860
I L L U S T R A T E D P A R T S C A T A L O G

LIST OF PAGES & TABLE OF CONTENTS
FOR
CHAPTER 28-00-00 FUEL

CHAP/SUB- SECT & UNIT	PAGE NO.	EFFECTIVE DATE	TABLE OF CONTENTS
28-00-00	1	04/19/84	LIST OF PAGES & TABLE OF CONTENTS
28-00-00	2	04/19/84	
28-10-01	1	03/20/81	FUEL STORAGE AND INTERCONNECT
28-10-01	2	03/20/81	202 GALLON CAPACITY
28-10-01	3	03/20/81	P-247 THRU P-347,P-349 THRU P-364
28-10-01	4	03/20/81	
28-10-01	5	03/20/81	
28-10-01	6	03/20/81	
28-10-01	7	04/16/82	
28-10-02	1	03/20/81	FUEL STORAGE AND INTERCONNECT
28-10-02	2	03/20/81	202 AND 232 GALLON CAPACITY
28-10-02	3	03/20/81	P-348,P-365 AND AFTER
28-10-02	4	03/20/81	
28-10-02	5	03/20/81	
28-10-10	1	03/20/81	FUEL CAP AND ADAPTER.
28-10-10	2	03/20/81	
28-10-10	3	03/20/81	
28-11-01	1	03/20/81	FUEL VENT AND DRAIN PLUMBING.
28-11-01	2	03/20/81	P-348,P-365 AND AFTER
28-11-01	3	04/19/84	
28-11-01	4	03/20/81	
28-11-01	5	04/16/82	
28-11-01	6	03/20/81	
28-11-01	7	04/19/84	
28-20-01	1	03/20/81	FUEL DISTRIBUTION
28-20-01	2	03/20/81	P-247 THRU P-347
28-20-01	3	04/16/82	P-349 THRU P-364
28-20-01	4	03/20/81	
28-20-01	5	03/20/81	
28-20-01	6	03/20/81	
28-20-01	7	03/20/81	
28-20-01	8	03/20/81	
28-20-01	9	01/08/82	
28-20-02	1	03/20/81	FUEL DISTRIBUTION
28-20-02	2	03/20/81	P-348,P-365 AND AFTER
28-20-02	3	04/16/82	
28-20-02	4	03/20/81	
28-20-02	5	03/20/81	
28-20-02	6	03/20/81	
28-20-02	7	03/20/81	
28-20-02	8	03/20/81	
28-20-02	9	04/16/82	
28-20-10	1	03/20/81	FUEL CHECK VALVE.
28-20-10	2	03/20/81	
28-20-10	3	03/20/81	
28-20-20	1	03/20/81	FUEL SELECTOR VALVE
28-20-20	2	03/20/81	
28-20-20	3	01/08/82	
28-20-30	1	03/20/81	FUEL STRAINER AND RELIEF VALVE.
28-20-30	2	03/20/81	
28-20-30	3	03/20/81	

B E E C H C R A F T
DUKE B60
I L L U S T R A T E D P A R T S C A T A L O G

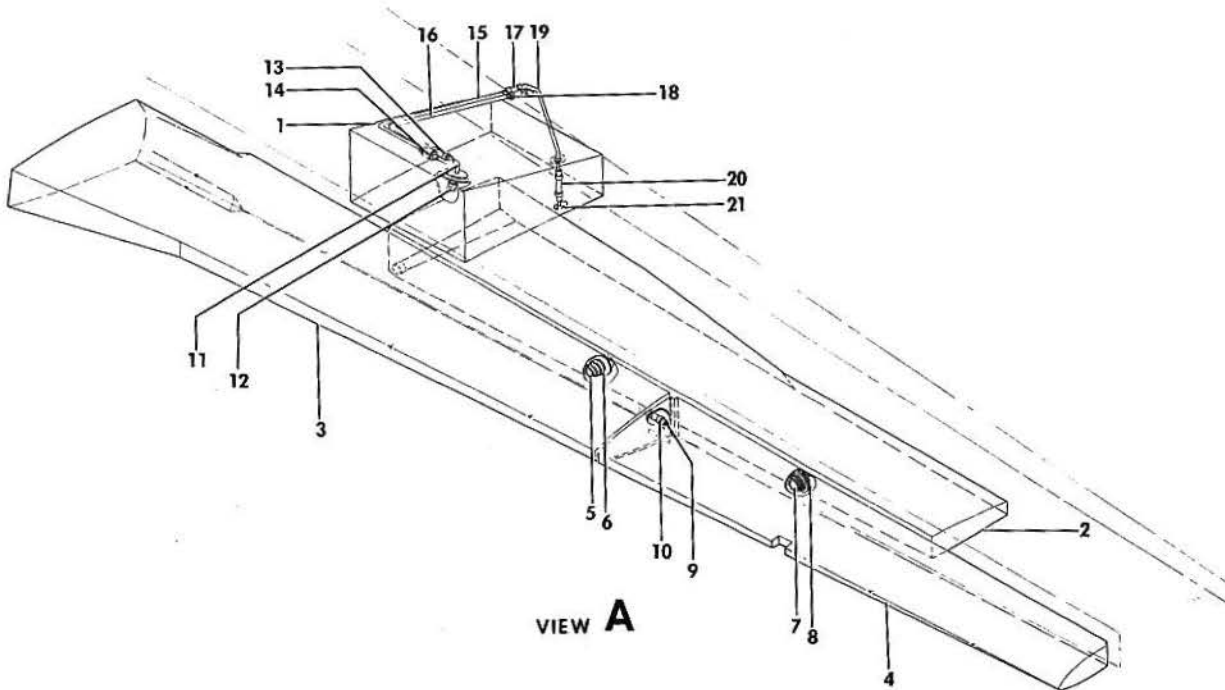
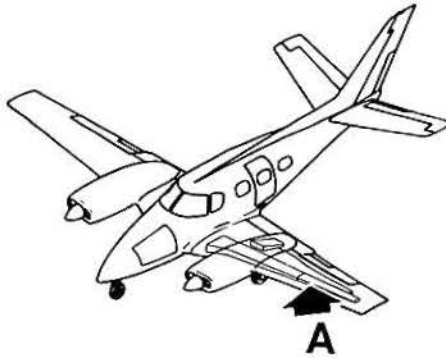
LIST OF PAGES & TABLE OF CONTENTS
FOR
CHAPTER 28-00-00 FUEL

CHAP/SUB- SECT & UNIT	PAGE NO.	EFFECTIVE DATE	TABLE OF CONTENTS
28-40-02	1	03/20/81 FUEL TRANSMITTERS AND INDICATORS.
28-40-02	2	03/20/81	
28-40-02	3	04/16/82	
28-40-02	4	03/20/81	
28-40-02	5	04/19/84	

BEECHCRAFT
DUKE B60
ILLUSTRATED PARTS CATALOG

28-10-01
FUEL STORAGE AND INTERCONNECT
202 GALLON CAPACITY
P-247 THRU P-347, P-349 THRU P-364

BEECHCRAFT
DUKE B60
ILLUSTRATED PARTS CATALOG

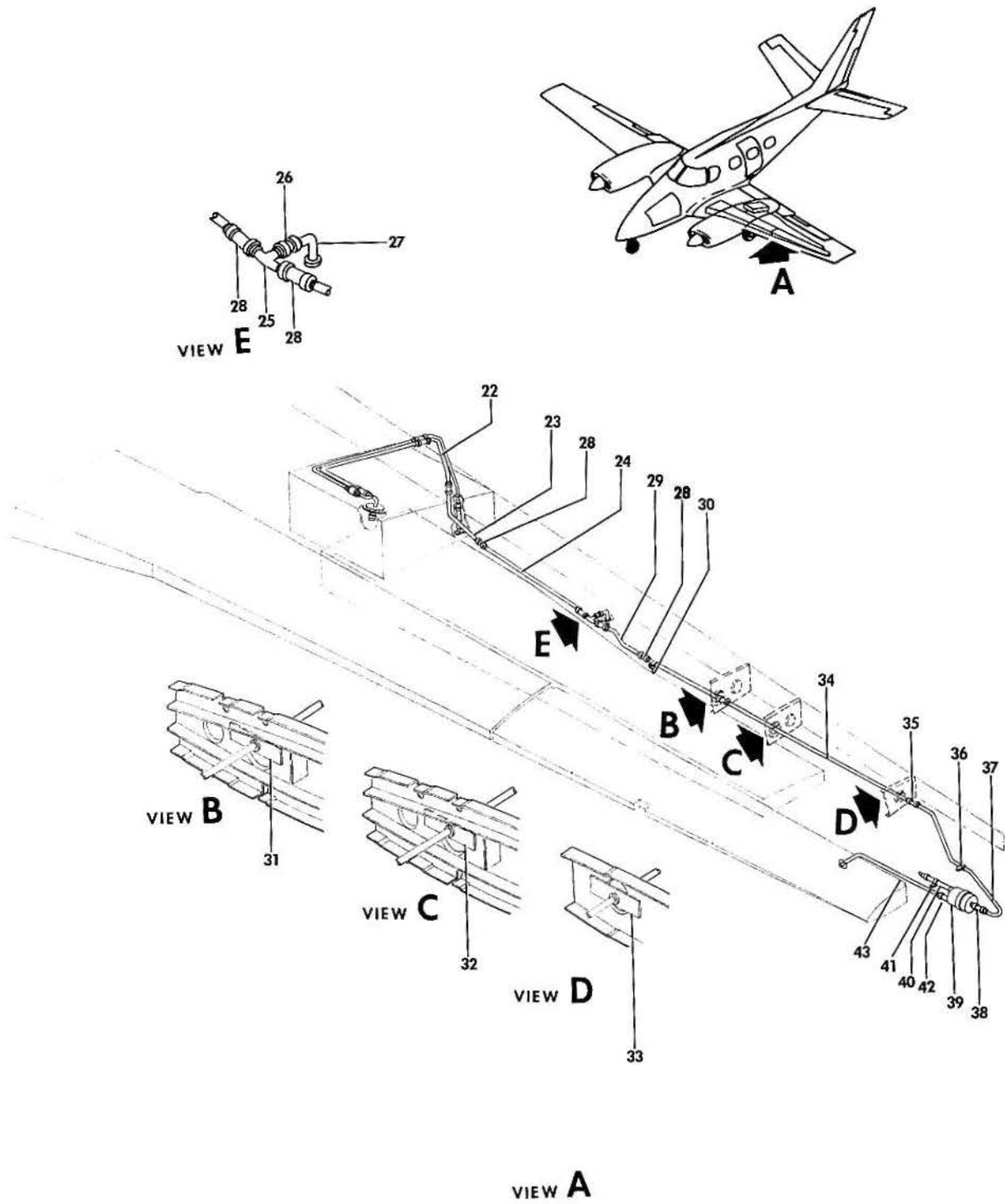


B60-281-7

B E E C H C R A F T
DUKE B60
I L L U S T R A T E D P A R T S C A T A L O G

GAMA/ATA CODE & INDEX NO.	PART NO.	DESCRIPTION	UNITS PER ASSY	USABLE ON CODE																
					1	2	3	4	5	6	7									
10-01	60-920000-239	FUEL SYSTEM INSTALLATION/202 GAL. CAPACITY/ . .	NP	5																
- 1	60-389023-5	. CELL ASSY,LH NACELLE FUEL/16 GAL. CAPACITY/ .	1	5																
	60-389023-6	. CELL ASSY,RH NACELLE FUEL/16 GAL. CAPACITY/ .	1	5																
- 2	60-389022-3	. CELL ASSY,LH BOX SECT.FUEL/31 GAL. CAPACITY/ .	1	5																
		/ALTERNATE FOR 60-389022-5/																		
	60-389022-5	. CELL ASSY,LH BOX SECT.FUEL/31 GAL. CAPACITY/ .	1	5																
		/ALTERNATE FOR 60-389022-3/																		
	60-389022-4	. CELL ASSY,RH BOX SECT.FUEL/31 GAL. CAPACITY/ .	1	5																
		/ALTERNATE FOR 60-389022-6/																		
	60-389022-6	. CELL ASSY,RH BOX SECT.FUEL/31 GAL. CAPACITY/ .	1	5																
		/ALTERNATE FOR 60-389022-4/																		
- 3	58-380030-7	. CELL ASSY,LH L.E.INBD FUEL/40 GAL. CAPACITY/ .	1	5																
		/ALTERNATE FOR 58-380030-9/																		
	58-380030-9	. CELL ASSY,LH L.E.INBD FUEL/40 GAL. CAPACITY/ .	1	5																
		/ALTERNATE FOR 58-380030-7/																		
	58-380030-8	. CELL ASSY,RH L.E.INBD FUEL/40 GAL. CAPACITY/ .	1	5																
		/ALTERNATE FOR 58-380030-10/																		
	58-380030-10	. CELL ASSY,RH L.E.INBD FUEL/40 GAL. CAPACITY/ .	1	5																
		/ALTERNATE FOR 58-380030-8/																		
	60-389021-5	. CELL ASSY,LH L.E.OUTBD FUEL/13 GAL.CAPACITY/ .	1	1																
- 4	002-920013-1	. CELL ASSY,LH L.E.OUTBD FUEL/13 GAL. CAPACITY/	1	2																
		/ALTERNATE FOR 002-920013-3/																		
	002-920013-3	. CELL ASSY,LH L.E.OUTBD FUEL/13 GAL. CAPACITY/	1	2																
		/ALTERNATE FOR 002-920013-1/																		
	60-389021-6	. CELL ASSY,RH L.E.OUTBD FUEL/13 GAL. CAPACITY/	1	1																
	002-920013-2	. CELL ASSY,RH L.E.OUTBD FUEL/13 GAL. CAPACITY/	1	2																
		/ALTERNATE FOR 002-920013-4/																		
	002-920013-4	. CELL ASSY,RH L.E.OUTBD FUEL/13 GAL. CAPACITY/	1	2																
		/ALTERNATE FOR 002-920013-2/																		
		/SEE SERVICE INSTRUCTION 0957																		
- 5	002-920012-43	. INTERCONNECT.	4	5																
	MS21266-2N	. GROMMET	2	5																
- 6	WWD82	. CLAMP,INTERCONNECT.	2	5																
- 7	002-920012-41	. INTERCONNECT.	2	5																
	MS21266-3N	. GROMMET	2	5																
- 8	WWD114	. CLAMP	2	5																
- 9	002-920012-45	. INTERCONNECT.	4	2																
	NAS557-20C	. GROMMET	2	2																
	NAS557-8A	. GROMMET	2	2																
- 10	AN737TW26-30	. CLAMP	4	5																
- 11	60-929013-11	. OUTLET ASSY,VENT LH	1	5																
	60-929013-12	. OUTLET ASSY,VENT RH	1	5																
- 12	AN737TW24	. CLAMP	2	5																
- 13	106200G8-11	. HOSE	2	5																
	AN737TW26-30	. CLAMP	2	5																
- 14	50-380170-11	. VALVE,CHECK	1	5																
- 15	60-920000-41	. TUBE ASSY..	1	5																
- 16	60-920000-191	. TUBE ASSY,LH.	1	5																
	60-920000-192	. TUBE ASSY,RH.	1	5																
	MS35489-6	. GROMMET	3	5																
	MS35489-14	. GROMMET	1	5																
	MS35490-14	. GROMMET	2	5																
- 17	106200H4-11	. HOSE.	1	5																
	AN737TW22	. CLAMP	2	5																
- 18	106200G8-11	. HOSE.	1	5																
	AN737TW26-30	. CLAMP	2	5																
- 19	60-920000-211	. TUBE,LH	1	5																
	60-920000-212	. TUBE,RH	1	5																
- 20	106200G4-32	. HOSE.	1	5																
	AN737TW22	. CLAMP	2	5																
- 21	50-920077-5	. FLANGE ASSY	1	5																

BEECHCRAFT
DUKE B60
ILLUSTRATED PARTS CATALOG

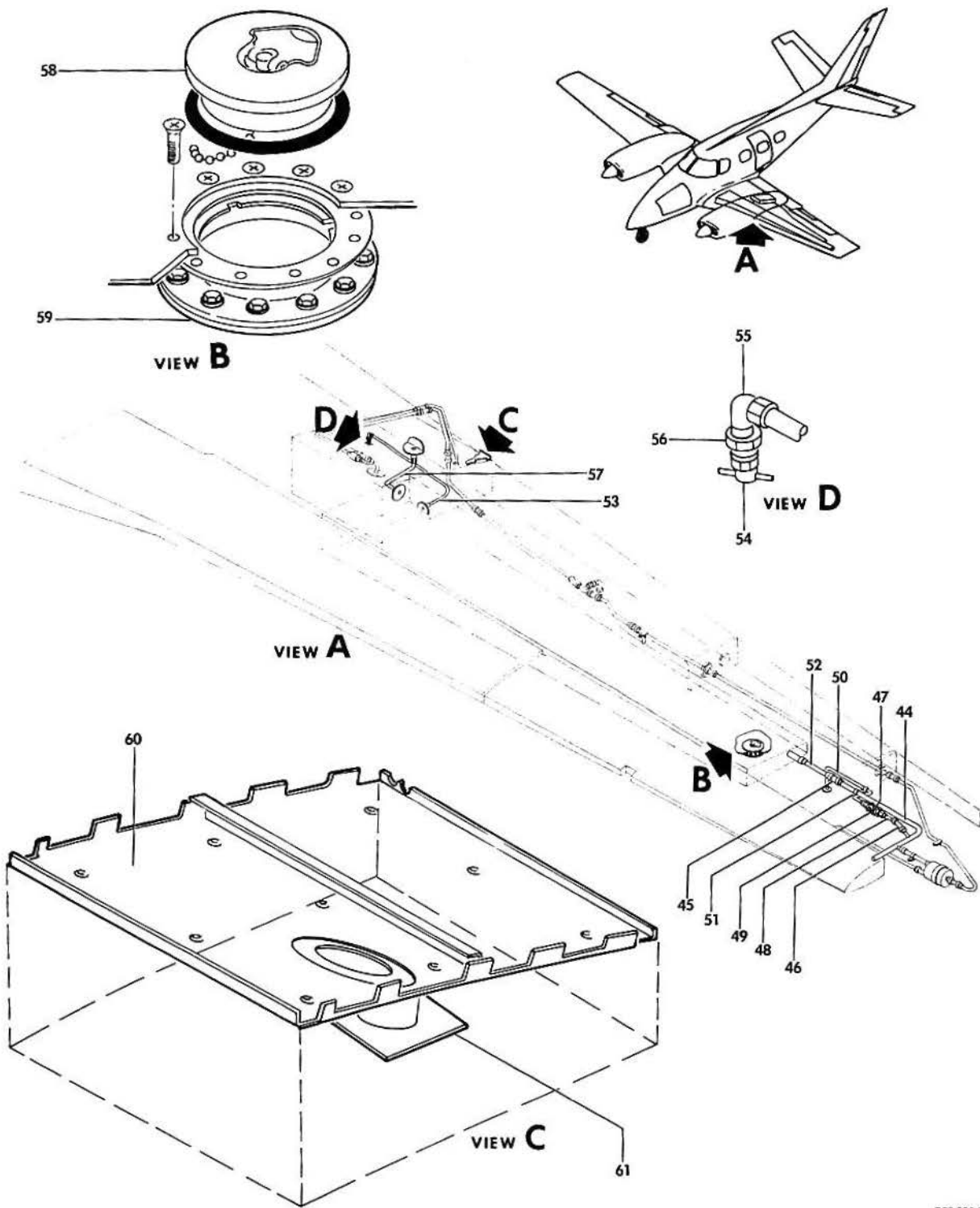


B60-281-8

B E E C H C R A F T
DUKE B60
I L L U S T R A T E D P A R T S C A T A L O G

GAMA/ATA CODE & INDEX NO.	PART NO.	DESCRIPTION							UNITS PER ASSY	USABLE ON CODE
		1	2	3	4	5	6	7		
10-01 - 22	60-920000-183	. TUBE,LH	1	5
	60-920000-184	. TUBE,RH	1	5
- 23	60-920000-205	. TUBE,LH	1	5
	60-920000-206	. TUBE,RH	1	5
	MS35489-14	. GROMMET	2	5
- 24	60-920000-175	. TUBE.	1	5
- 25	60-921035	. TEE ASSY.	1	5
- 26	106200G8-12	. HOSE	1	5
	AN737TW26-30	. CLAMP	2	5
- 27	60-381002	. TUBE ASSY,HEATED FUEL VENT.	1	5
- 28	106200G8-11	. HOSE.	5	5
	AN737TW26-30	. CLAMP	10	5
- 29	002-920000-45	. TUBE,LH	1	5
	002-920000-46	. TUBE,RH	1	5
- 30	AN743-13	. BRACKET	1	5
		/ATTACHING PARTS/								
	MS21919DG8	. CLAMP	1	
	AN520-10R	. SCREW	1	
	130909B15	. BOLT/OPTIONAL/	1	
	AN960-10L	. WASHER	1	
	130909N29	. NUT	1	
- 31	60-920000-203	. SUPPORT,TUBE.	1	5
	MS35489-14	. GROMMET	1	5
- 32	60-920000-201	. SUPPORT,TUBE.	1	5
	MS35489-14	. GROMMET	2	5
- 33	60-920000-199	. SUPPORT,TUBE.	1	5
	MS35489-14	. GROMMET	1	5
- 34	002-920000-47	. TUBE.	1	5
- 35	106200G8-11	. HOSE.	1	5
	12	. CLAMP	2	5
- 36	MS21919DG8	. CLAMP	1	5
		/ATTACHING PARTS/								
	AN3A	. BOLT.	2	
	AN960-10L	. WASHER.	2	
	130909N29	. NUT	2	
	AN743-12	. CLIP.	2	
- 37	002-920000-53	. TUBE ASSY	1	5
- 38	106200G8-11	. HOSE	1	5
	12	. CLAMP	2	5
- 39	60-921037-1	. VALVE ASSY,FLOAT.	1	5
	12	. CLAMP	1	5
- 40	106200G8-40	. HOSE	1	5
- 41	MS21919DG8	. CLAMP	1	5
		/ATTACHING PARTS/								
	AN3A	. BOLT.	2	
	AN960-10L	. WASHER.	2	
	130909N29	. NUT	2	
	AN743-12	. CLIP.	2	
- 42	12	. CLAMP	1	5
	106200G6-11	. HOSE.	1	5
	8	. CLAMP	2	5
- 43	60-920000-189	. TUBE.	1	1
	002-920000-89	. TUBE.	1	2
	6	. CLAMP	1	5

BEECHCRAFT
DUKE B60
ILLUSTRATED PARTS CATALOG



B60-281-9

BEECHCRAFT
DUKE 860
ILLUSTRATED PARTS CATALOG

GAMA/ATA CODE & INDEX NO.	PART NO.	DESCRIPTION							UNITS PER ASSY	USABLE ON CODE
		1	2	3	4	5	6	7		
10-01	60-921036-1	1	1
- 44	60-921036-15	1	2
	60-921036-2	1	1
	60-921036-16	1	2
	12	4	5
- 45	106200G12-16	1	5
- 46	106200G4-11	1	5
	6	2	5
- 47	3217-00-11	1	5
- 48	002-920000-55	1	5
- 49	MS21919DG11	1	5
	/ATTACHING PARTS/									
	AN3A	1	
	AN960-10L	1	
	130909N29	1	
	*									
- 50	002-920000-75	1	5
	002-920000-76	1	5
	6	2	5
- 51	MS21919DG12	2	5
	MS21919DG4	1	5
- 52	60-920000-207	1	5
- 53	96-920001-87	1	5
	96-920001-88	1	5
	R AN737RM22	1	5
- 54	CCA4850	1	5
- 55	AN822-4D	1	5
	AN910-1D	1	3
- 56	AN910-1J	1	4
- 57	60-929017-5	1	5
	60-929017-6	1	5
	AN737TW26-30	1	5
	AN737TW22	1	5
- 58	60-920000-67	1	5
	96-380035	1	5
	35-921502	1	5
- 59	96-380036-11	1	5
	/ATTACHING PARTS/									
	MS20073-04-04	12	
	AN960-416L	12	
	AN509-1032R9	12	
	*									
	60-920012-3	NP	5
	60-920012-4	NP	5
- 60	60-980035-7	1	5
	60-980035-8	1	5
- 61	60-920013-9	1	5
	60-920013-10	1	5
	WWD114	2	5

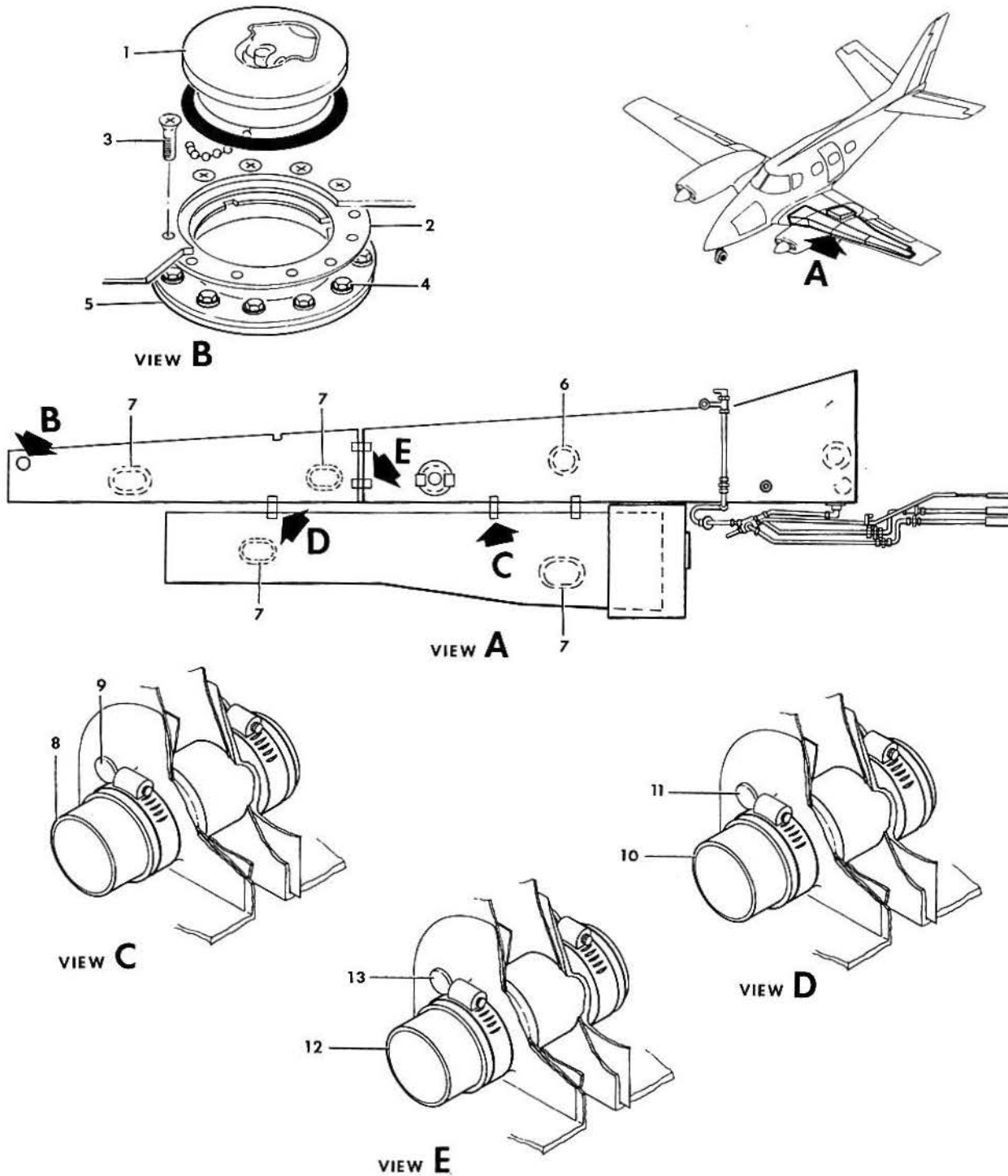
CODES OF EFFECTIVITY

1	P-247 THRU P-266	2	P-267 THRU P-347
			P-349 THRU P-364
3	P-247 THRU P-281	4	P-282 THRU P-347
			P-349 THRU P-364
5	P-247 THRU P-347		
	P-349 THRU P-364		

B E E C H C R A F T
DUKE B60
I L L U S T R A T E D P A R T S C A T A L O G

28-10-02
FUEL STORAGE AND INTERCONNECT
202 AND 232 GALLON CAPACITY
P-348,P-365 AND AFTER

BEECHCRAFT
DUKE B60
ILLUSTRATED PARTS CATALOG

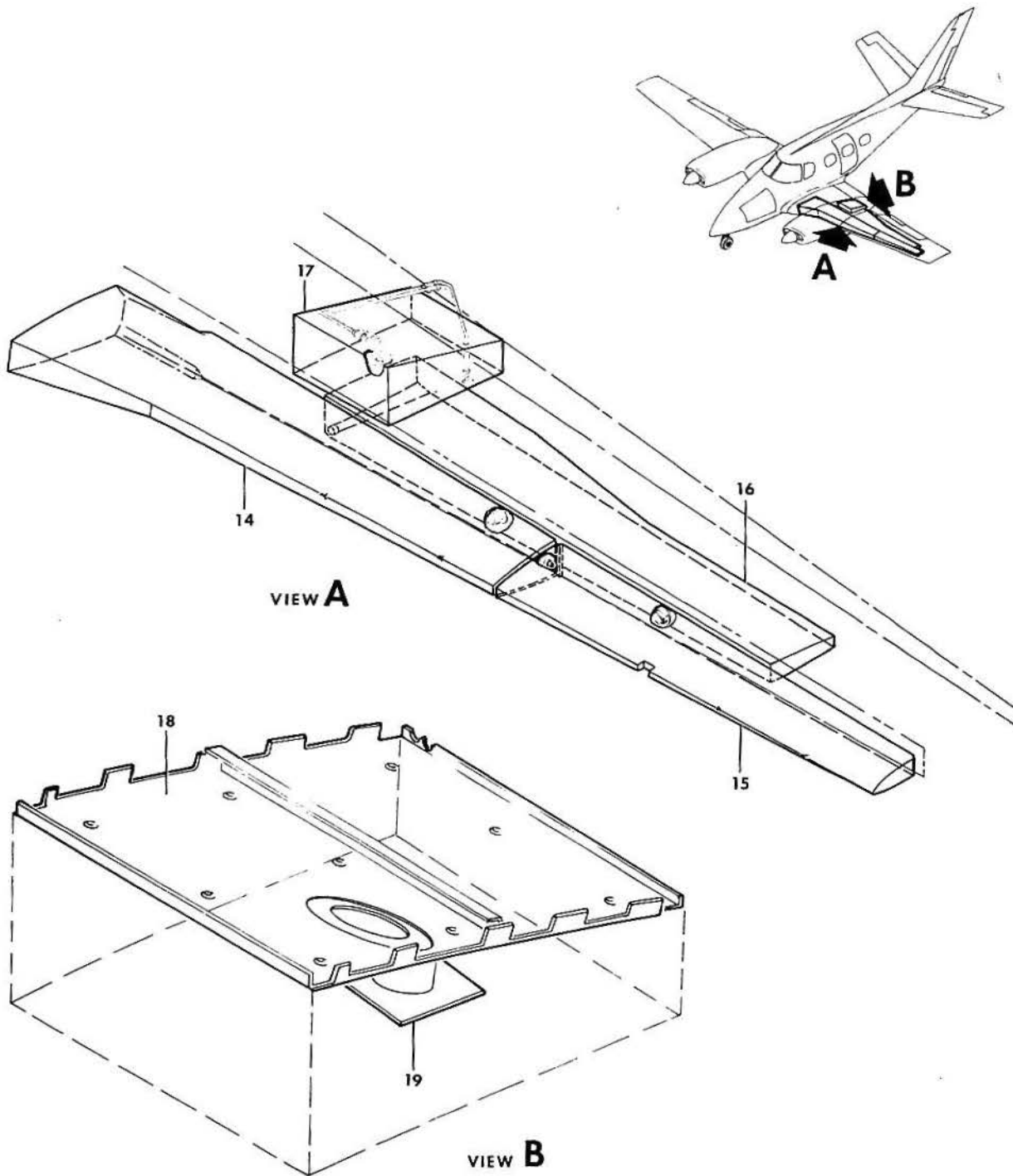


B60-281-10

B E E C H C R A F T
DUKE B60
I L L U S T R A T E D P A R T S C A T A L O G

GAMA/ATA CODE & INDEX NO.	PART NO.	DESCRIPTION							UNITS PER ASSY	USABLE ON CODE
		1	2	3	4	5	6	7		
10-02	60-920002-1	FUEL SYSTEM INSTALLATION/202 GALLON CAPACITY/	NP	1
	60-920002-13	FUEL SUSTEM INSTALLATION/202 GALLON CAPACITY/	NP	2
	60-9006-3 P	KIT INSTL/WET WING TIP/	1	
		/SEE SERVICE INSTRUCTIONS 0913/		
	60-920002-3	FUEL SYSTEM INSTALLATION/232 GALLON CAPACITY/	NP	1
	60-920002-15	FUEL SYSTEM INSTALLATION/232 GALLON CAPACITY/	NP	2
- 1	96-380035-1	. CAP,FILLER/ALTERNATE FOR 96-380035-3/SEE.	2	3
		CHAPTER 28-10-10/		
	96-380035-3	. CAP,FILLER/ALTERNATE FOR 96-380035-1/SEE.	2	3
		CHAPTER 28-10-10/		
- 2	96-380036-11	. ADAPTER ASSY,FILLER CAP	2	3
		/ATTACHING PARTS/		
- 3	AN509-1032R9	. SCREW	12	
- 4	MS20073-04-04	. BOLT	12	
	AN960-416L	. WASHER	12	
		-----*								
- 5	35-921502	. GASKET	2	3
- 6	50-921509-9	. COVER PLATE,FUEL CELL ACCESS/INBD L.E./	2	3
		/ATTACHING PARTS/		
	MS20073-04-03	. BOLT	12	
	AN960-416L	. WASHER	12	
		-----*								
- 7	35-921502	. GASKET,FUEL ACCESS COVER PLATE/INBD L.E./	2	3
	002-920020-3	. COVER,FUEL CELL ACCESS/OUTBD LE & BOX SECT/	8	3
		/ATTACHING PARTS/		
	NAS501-4H-4A	. BOLT/OUTBD L.E./	12	
	MS20073-04-04	. BOLT/BOX SECTION/	12	
	AN960PD416L	. WASHER/OUTBD L.E./	12	
	AN960-416L	. WASHER/BOX SECTION/	12	
		-----*								
- 8	002-920020-1	. GASKET,FUEL CELL ACCESS/OUTBD LE & BOX SECT./	8	3
	002-920012-43	. INTERCONNECT,INBOARD.	4	3
		/ATTACHING PARTS/		
- 9	WWD-82	. CLAMP,INBD INTERCONNECT	2	
		-----*								
- 10	002-920012-41	. INTERCONNECT,OUTBOARD	2	3
		/ATTACHING PARTS/		
- 11	WWD-114	. CLAMP,OUTBOARD INTERCONNECT	2	
		-----*								
- 12	002-920012-45	. INTERCONNECT,LEADING EDGE	4	3
		/ATTACHING PARTS/		
- 13	AN737TW-30	. CLAMP,LEADING EDGE INTERCONNECT	2	
		-----*								

BEECHCRAFT
DUKE B60
ILLUSTRATED PARTS CATALOG



B60-281-11

B E E C H C R A F T
DUKE B60
I L L U S T R A T E D P A R T S C A T A L O G

GAMA/ATA CODE & INDEX NO.	PART NO.	DESCRIPTION	UNITS PER ASSY	USABLE ON CODE		
					1	2
10-02	58-380030-7	. FUEL CELL,LH L.E. INBD/40 GALLON CAPACITY/. . /ALTERNATE FOR 58-380030-9/	1	1		
	58-380030-9	. FUEL CELL,LH L.E. INBD/40 GALLON CAPACITY/. . /ALTERNATE FOR 58-380030-7/	1	1		
- 14	60-921057-1	. FUEL CELL,LH L.E. INBD/40 GALLON CAPACITY/. . /ALTERNATE FOR 60-921057-3/	1	2		
	60-921057-3	. FUEL CELL,LH L.E. INBD/40 GALLON CAPACITY/. . /ALTERNATE FOR 60-921057-1/	1	2		
	58-380030-8	. FUEL CELL,RH L.E. INBD/40 GALLON CAPACITY/. . /ALTERNATE FOR 58-380030-10/	1	1		
	58-380030-10	. FUEL CELL,RH L.E. INBD/40 GALLON CAPACITY/. . /ALTERNATE FOR 58-380030-8/	1	1		
	60-921057-2	. FUEL CELL,RH L.E. INBD/40 GALLON CAPACITY/. . /ALTERNATE FOR 60-921057-4/	1	2		
	60-921057-4	. FUEL CELL,RH L.E. INBD/40 GALLON CAPACITY/. . /ALTERNATE FOR 60-921057-2/	1	2		
- 15	60-921046-1	. FUEL CELL,LH L.E. OUTBD/13 GALLON CAPACITY/. . /ALTERNATE FOR 60-921046-3/	1	3		
	60-921046-3	. FUEL CELL,LH L.E. OUTBD/13 GALLON CAPACITY/. . /ALTERNATE FOR 60-921046-1/	1	3		
	60-921046-2	. FUEL CELL,RH L.E. OUTBD/13 GALLON CAPACITY/. . /ALTERNATE FOR 60-921046-4/	1	3		
	60-921046-4	. FUEL CELL,RH L.E. OUTBD/13 GALLON CAPACITY/. . /ALTERNATE FOR 60-921046-2/	1	3		
- 16	60-389022-3	. FUEL CELL,LH BOX SECTION/31 GALLON CAPACITY/. . /ALTERNATE FOR 60-389022-5/	1	3		
	60-389022-5	. FUEL CELL,LH BOX SECTION/31 GALLON CAPACITY/. . /ALTERNATE FOR 60-389022-3/	1	3		
	60-389022-4	. FUEL CELL,RH BOX SECTION/31 GALLON CAPACITY/. . /ALTERNATE FOR 60-389022-6/	1	3		
	60-389022-6	. FUEL CELL,RH BOX SECTION/31 GALLON CAPACITY/. . /ALTERNATE FOR 60-389022-4/	1	3		
- 17	60-389023-7	. FUEL CELL,LH NACELLE/16 GALLON CAPACITY/.	1	3		
	60-389023-8	. FUEL CELL,RH NACELLE/16 GALLON CAPACITY/.	1	3		
	60-920012-3	. TANK CAVITY INSTALLATION/L.H./	NP	3		
	60-920012-4	. TANK CAVITY INSTALLATION/R.H./	NP	3		
- 18	60-980035-7	. LINER,FUEL CELL/LH NACELLE/	1	3		
	60-980035-8	. LINER,FUEL CELL/RH NACELLE/	1	3		
- 19	60-920013-9	. INTERCONNECT,LH NACELLE	1	3		
	60-920013-10	. INTERCONNECT,RH NACELLE	1	3		
	WMD-114	. CLAMP,NACELLE INTERCONNECT.	2	3		

NOTE SEE CHAPTER 57-20-31 FOR OPTIONAL WET
WING TIP

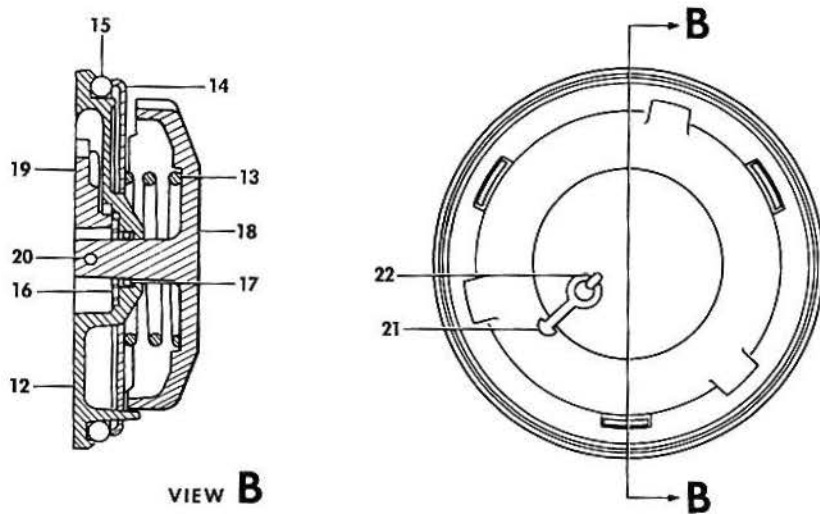
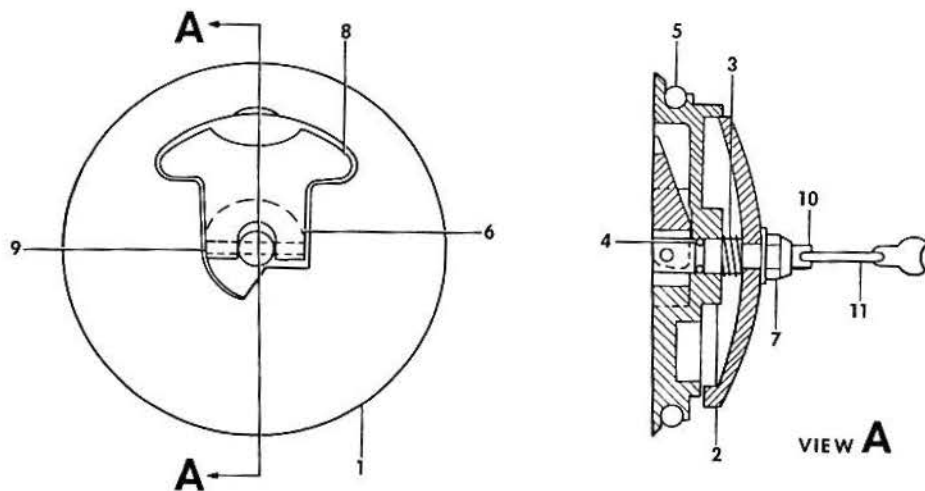
CODES OF EFFECTIVITY

- 1 P-348,P-365 THRU 2 P-402 AND AFTER
P-401
- 3 P-348,P-365 & AFTER

BEECHCRAFT
DUKE B60
ILLUSTRATED PARTS CATALOG

28-10-10
FUEL CAP AND ADAPTER

BEECHCRAFT
DUKE B60
ILLUSTRATED PARTS CATALOG



B60-287-2

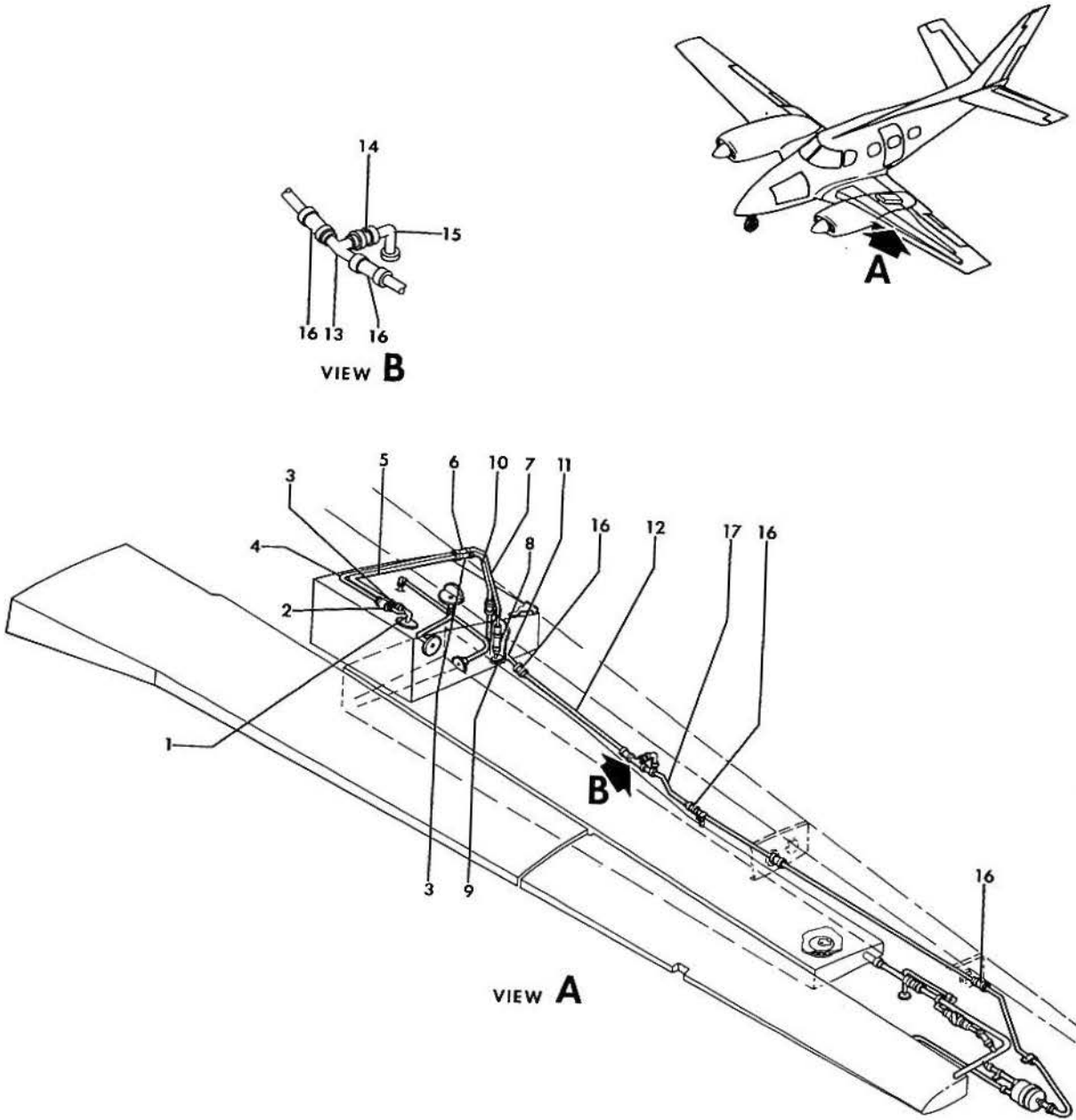
B E E C H C R A F T
DUKE B60
I L L U S T R A T E D P A R T S C A T A L O G

GAMA/ATA CODE & INDEX NO.	PART NO.	1 2 3 4 5 6 7	DESCRIPTION	UNITS PER ASSY	USABLE ON CODE
10-10	96-380035-1		CAP ASSY,FUEL FILLER/ORDER 96-380035/	NP	
	431-9		. BODY ASSY,CAP	1	
- 1	431-14		. . BASE.	1	
- 2	431-11		. . PAWL.	1	
- 3	431-13		. . SPRING.	1	
- 4	MS29513-10		. . O RING.	1	
- 5	MS29513-338		. . O RING.	1	
- 6	431-18		. . PLATE,BEARING	1	
- 7	130909N7		. . NUT	1	
	416-326-1		. . WASHER.	1	
	MS24665-132		. . PIN,COTTER.	1	
- 8	431-15		. . HANDLE.	1	
			/ATTACHING PARTS/		
- 9	416-9-1		. . PIN,HANDLE.	1	
			----->		
- 10	416-16		. AXLE.	1	
- 11	416-13		. HOOK.	1	
	96-380035-3		CAP ASSY,FUEL FILLER.	NP	
			/ALTERNATE FOR 96-380035-1/ORDER 96-380035/		
- 12	37685-2		. BASE.	1	
- 13	37693		. SPRING.	1	
- 14	37691		. RETAINER.	1	
- 15	37617-339		. O RING.	1	
- 16	37117		. PLATE,BEARING	1	
- 17	MS9021-110		. O RING.	1	
- 18	38038		. LOCK.	1	
- 19	C37656-41		. HANDLE.	1	
			/ATTACHING PARTS/		
- 20	38061		. PIN,HANDLE.	1	
			----->		
- 21	38104		. COUPLING.	1	
- 22	AN381-3-8		. PIN,COTTER.	1	
	96-380036-11		ADAPTER ASSY,FUEL FILLER CAP.	1	

B E E C H C R A F T
DUKE B60
I L L U S T R A T E D P A R T S C A T A L O G

28-11-01
FUEL VENT AND DRAIN PLUMBING
P-348, P-365 AND AFTER

BEECHCRAFT
DUKE B60
ILLUSTRATED PARTS CATALOG

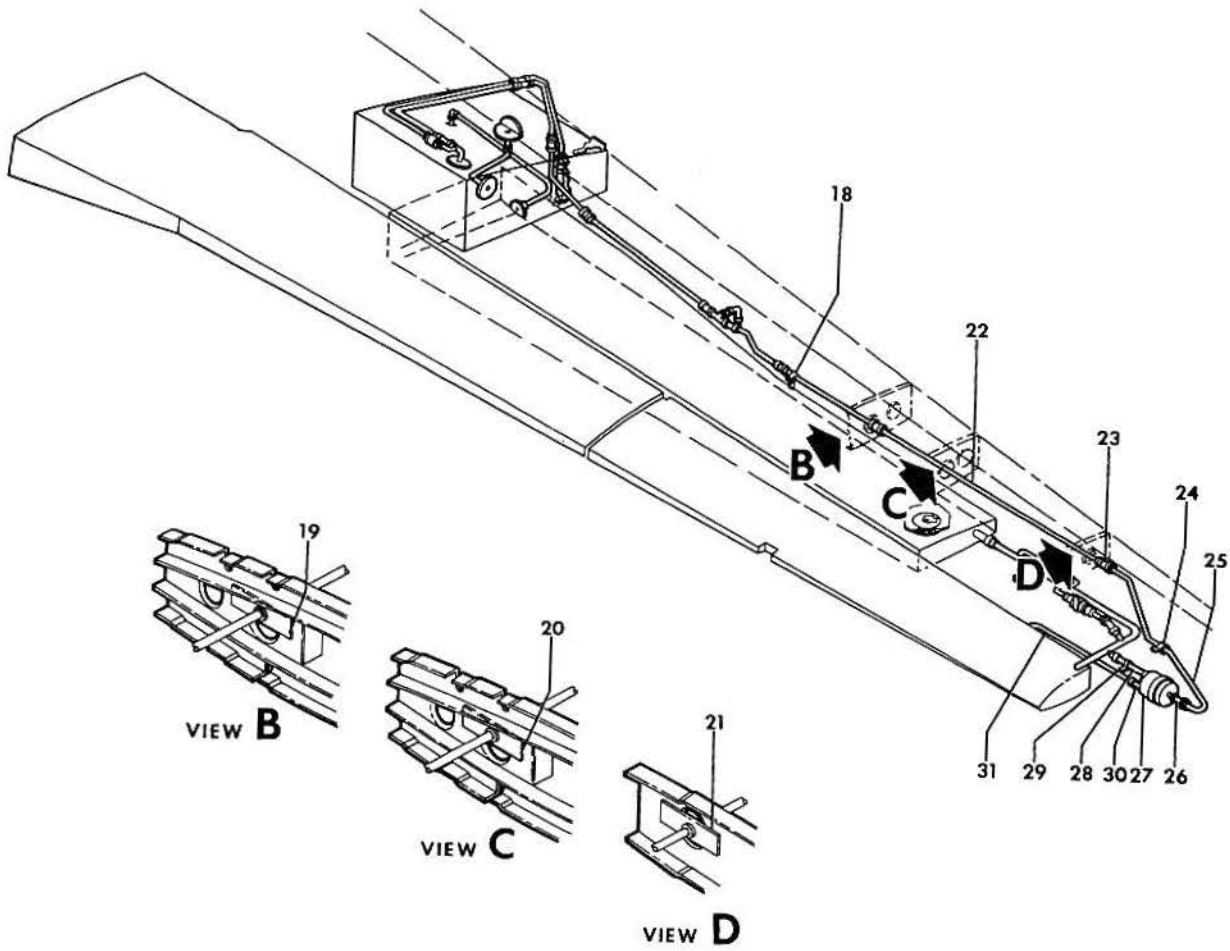
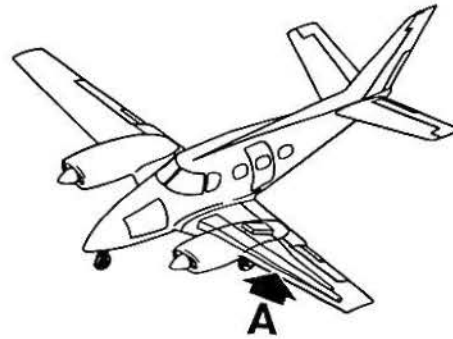


B60-281-16

B E E C H C R A F T
DUKE B60
I L L U S T R A T E D P A R T S C A T A L O G

SUB-SECT UNIT & ITEM NO.	PART NO.	1	2	3	4	5	6	7	DESCRIPTION	UNITS PER ASSY	USABLE ON CODE
11-01	60-920002-1								FUEL SYSTEM INSTL/202 GALLON CAPACITY/.	NP	1
	60-920002-13								FUEL SYSTEM INSTL/202 GALLON CAPACITY/.	NP	2
	60-920002-3								FUEL SYSTEM INSTL/232 GALLON CAPACITY/.	NP	1
	60-920002-15								FUEL SYSTEM INSTL/232 GALLON CAPACITY/.	NP	2
- 1	60-929013-11								. OUTLET ASSY,LH VENT/202 GALLON CAPACITY/.	1	3
	60-929013-12								. OUTLET ASSY,RH VENT/202 GALLON CAPACITY/.	1	3
	60-920020-1								. VALVE ASSY,LH AND RH VENT/232 GAL.CAPACITY/ /ATTACHING PARTS/	2	3
	AN737TW24								. CLAMP	1	
									*		
- 2	50-380170-11								. CHECK VALVE,LH AND RH/202 GALLON CAPACITY/.	2	3
	AN806-4D								. PLUG,LH AND RH VENT LINE/232 GALLON CAPACITY/	2	3
- 3	106200G8-11								. HOSE/LH AND RH/	4	3
									/ATTACHING PARTS/		
	R 8KS3								. CLAMP/202 GALLON CAPACITY/.	4	
	8KS3								. CLAMP/FOR 232 GALLON CAPACITY/.	2	
									*		
- 4	60-920000-41								. TUBE ASSY,LH & RH/202 GALLON CAPACITY/.	2	3
	MS35489-6								. GROMMET/202 GALLON CAPACITY/.	6	3
- 5	60-920000-191								. TUBE ASSY,LH.	1	3
	60-920000-192								. TUBE ASSY,RH.	1	3
	MS35489-14								. GROMMET	2	3
	MS35490-14								. GROMMET	4	3
- 6	106200H4-11								. HOSE/202 GALLON CAPACITY/	2	3
									/ATTACHING PARTS/		
	R 6208								. CLAMP	2	
	R M5S								. CLAMP/ALTERNATE FOR 6208/	2	
									*		
- 7	60-920000-211								. TUBE ASSY,LH/202 GALLON CAPACITY/	1	3
	60-920000-212								. TUBE ASSY,RH/202 GALLON CAPACITY/	1	3
- 8	106200G4-32								. HOSE/202 GALLON CAPACITY/	2	3
									/ATTACHING PARTS/		
	R 6208								. CLAMP	2	
	R M5S								. CLAMP/ALTERNATE FOR 6208/	2	
									*		
- 9	50-920077-5								. FLANGE ASSY	2	3
- 10	60-920000-183								. TUBE,LH	1	3
	60-920000-184								. TUBE,RH	1	3
- 11	60-920000-205								. TUBE,LH	1	3
	60-920000-206								. TUBE,RH	1	3
	MS35489-14								. GROMMET	2	3
- 12	60-920000-175								. TUBE,LH AND RH.	2	3
- 13	60-921035-1								. TEE ASSY,LH AND RH.	2	3
- 14	106200G8-12								. HOSE.	2	3
									/ATTACHING PARTS/		
	R 8KS3								. CLAMP	2	
									*		
- 15	60-381002								. TUBE ASSY,HEATED VENT	2	3
- 16	106200G8-11								. HOSE.	10	3
									/ATTACHING PARTS/		
	R 8KS3								. CLAMP	2	
									*		
- 17	002-920000-45								. TUBE,LH	1	3
	002-920000-46								. TUBE,RH	1	3

BEECHCRAFT
DUKE B60
ILLUSTRATED PARTS CATALOG

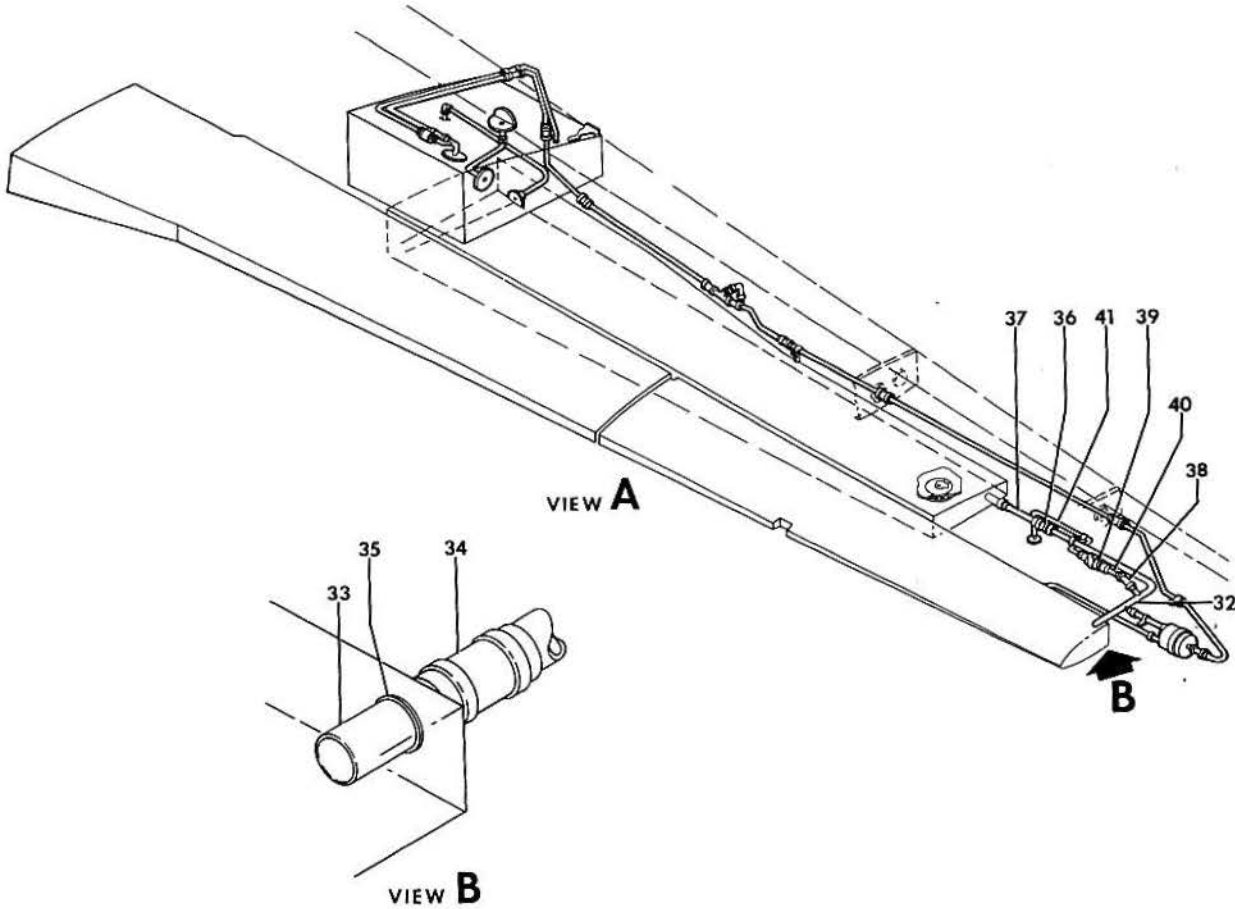
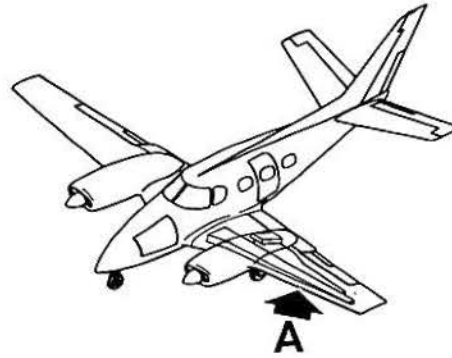


B60-281.17

BEECHCRAFT
DUKE B60
ILLUSTRATED PARTS CATALOG

GAMA/ATA CODE & INDEX NO.	PART NO.	DESCRIPTION							UNITS PER ASSY	USABLE DN CODE	
		1	2	3	4	5	6	7			
11-01 - 18	MS21919DG8	• CLAMP	•	•	•	•	•	•	•	2	3
		/ATTACHING PARTS/									
	AN743-13	• BRACKET,SUPPORT	•	•	•	•	•	•	•	1	
	MS35207-263	• SCREW	•	•	•	•	•	•	•	1	
	130909B15	• BOLT/OPTIONAL/	•	•	•	•	•	•	•	1	
	AN960-10L	• WASHER	•	•	•	•	•	•	•	1	
	130909N29	• NUT	•	•	•	•	•	•	•	1	
- 19	60-920000-203	• TUBE, SUPPORT	•	•	•	•	•	•	•	2	3
	MS35489-14	• GROMMET	•	•	•	•	•	•	•	2	3
- 20	60-920000-201	• TUBE, SUPPORT	•	•	•	•	•	•	•	2	3
	MS35489-14	• GROMMET	•	•	•	•	•	•	•	2	3
- 21	60-920000-199	• TUBE, SUPPORT	•	•	•	•	•	•	•	2	3
	MS35489-14	• GROMMET	•	•	•	•	•	•	•	2	3
- 22	002-920000-47	• TUBE	•	•	•	•	•	•	•	2	3
- 23	106200G8-11	• HOSE	•	•	•	•	•	•	•	2	3
		/ATTACHING PARTS/									
	8KS3	• CLAMP	•	•	•	•	•	•	•	2	
- 24	MS21919DG8	• CLAMP	•	•	•	•	•	•	•	2	
		/ATTACHING PARTS/									
	MS27039C1-08	• SCREW	•	•	•	•	•	•	•	2	
	AN960C10L	• WASHER	•	•	•	•	•	•	•	2	
	MS21083C3	• NUT	•	•	•	•	•	•	•	2	
	AN743-12	• CLIP,SUPPORT	•	•	•	•	•	•	•	1	
- 25	002-920000-53	• TUBE ASSY/202 GALLON CAPACITY ONLY/	•	•	•	•	•	•	•	1	3
	60-920002-7	• TUBE/232 GALLON CAPACITY ONLY/	•	•	•	•	•	•	•	1	3
- 26	106200G8-11	• HOSE	•	•	•	•	•	•	•	1	3
		/ATTACHING PARTS/									
	8KS3	• CLAMP	•	•	•	•	•	•	•	2	
- 27	002-920019-1	• VALVE ASSY,FLOAT/202 GALLON CAPACITY ONLY/	•	•	•	•	•	•	•	1	3
		/ATTACHING PARTS/									
	48KS3	• CLAMP/202 GALLON CAPACITY ONLY/	•	•	•	•	•	•	•	1	
- 28	106200G8-40	• HOSE	•	•	•	•	•	•	•	1	3
		/ATTACHING PARTS/									
	8KS3	• CLAMP	•	•	•	•	•	•	•	2	
- 29	MS21919DG14	• CLAMP/UPPER/	•	•	•	•	•	•	•	1	3
	MS21919DG6	• CLAMP/LWR/	•	•	•	•	•	•	•	1	3
		/ATTACHING PARTS/									
	MS27039C1-08	• SCREW	•	•	•	•	•	•	•	4	
	AN960C10L	• WASHER	•	•	•	•	•	•	•	4	
	MS21083C3	• NUT	•	•	•	•	•	•	•	4	
	AN743-12	• CLIP,SUPPORT	•	•	•	•	•	•	•	4	
- 30	106200G6-11	• HOSE/202 GALLON CAPACITY ONLY/	•	•	•	•	•	•	•	1	3
		/ATTACHING PARTS/									
	R 6208	• CLAMP	•	•	•	•	•	•	•	2	
- 31	60-920002-5	• TUBE/202 GALLON CAPACITY/	•	•	•	•	•	•	•	1	3
	MS21266-1N	• GROMMET	•	•	•	•	•	•	•	2	3

BEECHCRAFT
DUKE B60
ILLUSTRATED PARTS CATALOG



860-281-18

B E E C H C R A F T
DUKE 860
I L L U S T R A T E D P A R T S C A T A L O G

SUB-SECT UNIT & ITEM NO.	PART NO.	DESCRIPTION	1 2 3 4 5 6 7							UNITS PER ASSY	USABLE ON CODE
			1	2	3	4	5	6	7		
11-01 - 32	002-920017-29	. TUBE ASSY/202 GALLON CAPACITY/								1	3
	60-921049-1	. MANIFOLD ASSY,LH/232 GALLON CAPACITY/								1	4
	60-921049-2	. MANIFOLD ASSY,RH/232 GALLON CAPACITY/								1	4
	60-921049-9	. MANIFOLD ASSY,LH/232 GALLON CAPACITY/								1	5
	60-921049-10	. MANIFOLD ASSY,RH/232 GALLON CAPACITY/								1	5
- 33	002-920000-175	. TUBE/202 GALLON CAPACITY/								1	3
	60-920002-9	. TUBE/232 GALLON CAPACITY/								1	3
		/ATTACHING PARTS/									
	12KS3	. CLAMP								1	
- 34	106200G12-10	. HOSE/202 GALLON CAPACITY ONLY/								2	3
		/ATTACHING PARTS/									
	12KS3	. CLAMP								2	
	106200G8-8	. HOSE/232 GALLON CAPACITY ONLY/								2	3
		/ATTACHING PARTS/									
	8KS3	. CLAMP								2	
- 35	MS21266-1N	. GROMMET/202 GALLON CAPACITY/								2	3
- 36	106200G12-16	. HOSE								2	3
		/ATTACHING PARTS/									
	12KS3	. CLAMP								3	
- 37	60-920000-207	. TUBE/202 GALLON CAPACITY/								2	3
	002-920017-1	. TUBE ASSY/232 GALLON CAPACITY/								2	3
	106200G12-10	. HOSE/232 GALLON CAPACITY/								2	3
		/ATTACHING PARTS/									
	12KS3	. CLAMP								2	
- 38	106200H4-11	. HOSE								2	3
		/ATTACHING PARTS/									
	R 6208	. CLAMP/ALTERNATE FOR M5S/								2	
	R M5S	. CLAMP/ALTERNATE FOR 6208/								2	
- 39	60-380003	. VALVE,RELIEF/202 GALLON CAPACITY/								2	3
	60-380003-3	. VALVE,RELIEF/232 GALLON CAPACITY/								2	3
- 40	002-920000-55	. TUBE ASSY								2	3
- 41	002-920000-75	. TUBE ASSY,LH.								1	3
	002-920000-76	. TUBE ASSY,RH.								1	3
	000-920012-11	. FLANGE ASSY/232 GALLON CAPACITY ONLY/								2	3
	106200H4-10	. HOSE/232 GALLON CAPACITY ONLY/								2	3
		/ATTACHING PARTS/									
	R 6208	. CLAMP								2	
	R M5S	. CLAMP/ALTERNATE FOR 6208/								2	
	002-920000-195	. TUBE ASSY,LH/232 GALLON CAPACITY ONLY/								1	3
	002-920000-196	. TUBE ASSY,RH/232 GALLON CAPACITY ONLY/								1	3
	MS21919DG17	. CLAMP/232 GALLON/								2	3
		/ATTACHING PARTS/									
	AN3DD4A	. BOLT.								1	
	AN960PD10L	. WASHER.								AR	
	MS21083D3	. NUT								1	
	NAS43DD4-19	. SPACER.								1	
	50-380170-11	. VALVE,CHECK/232 GALLON CAPACITY ONLY/								2	3
	102-920001-47	. TUBE ASSY/232 GALLON CAPACITY ONLY/								2	3
	002-920000-209	. TUBE ASSY/202 AND 232 GALLON CAPACITY/								2	5

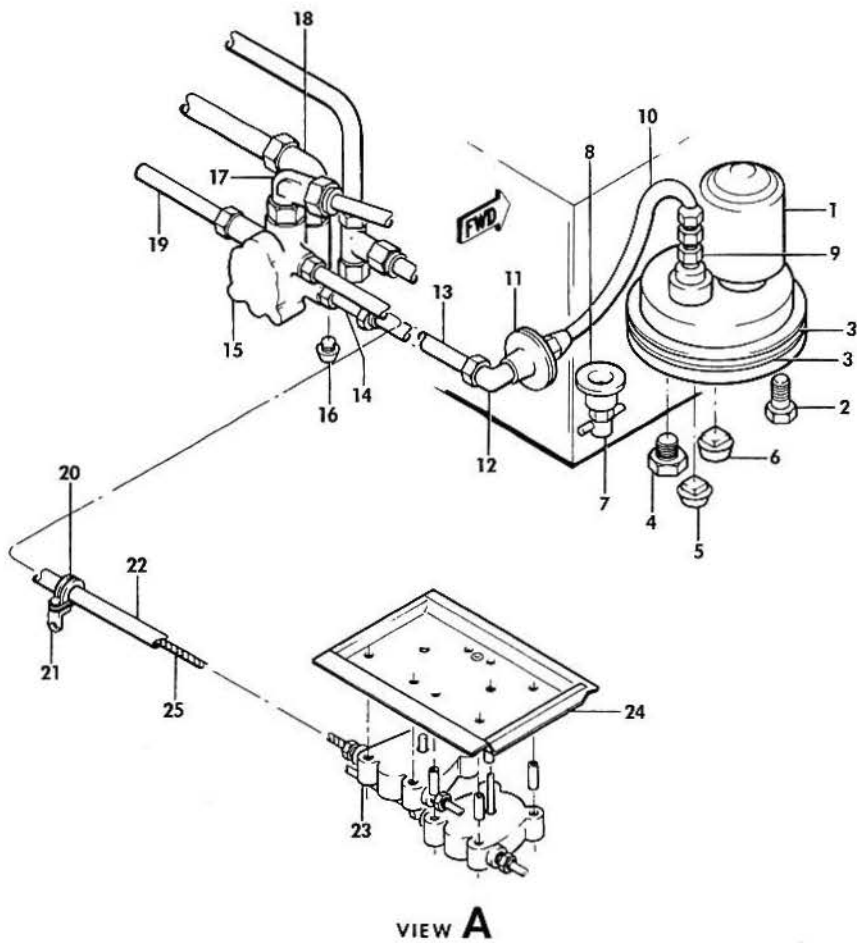
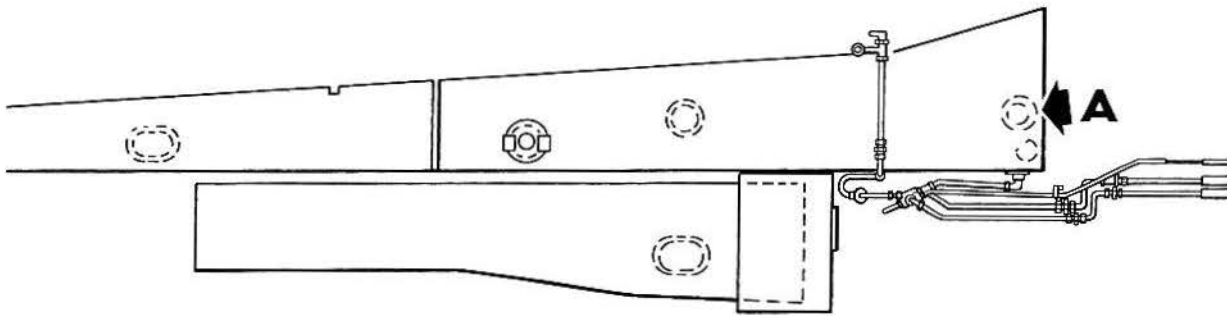
CODES OF EFFECTIVITY

- | | |
|------------------------------|------------------------------|
| 1 P-348,
P-365 THRU P-401 | 2 P-402 AND AFTER |
| 3 P-348,
P-365 AND AFTER | 4 P-348,
P-365 THRU P-382 |
| 5 P-383 AND AFTER | |

BEECHCRAFT
DUKE B60
ILLUSTRATED PARTS CATALOG

28-20-01
FUEL DISTRIBUTION
P-247 THRU P-347
P-349 THRU P-364

BEECHCRAFT
DUKE B60
ILLUSTRATED PARTS CATALOG

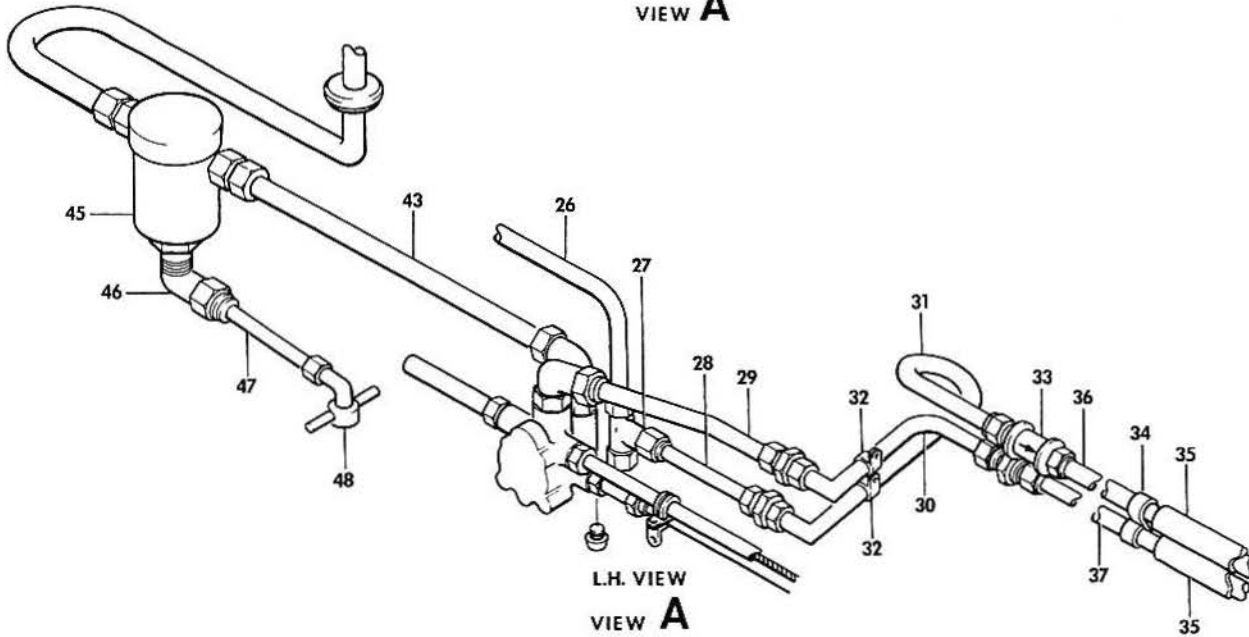
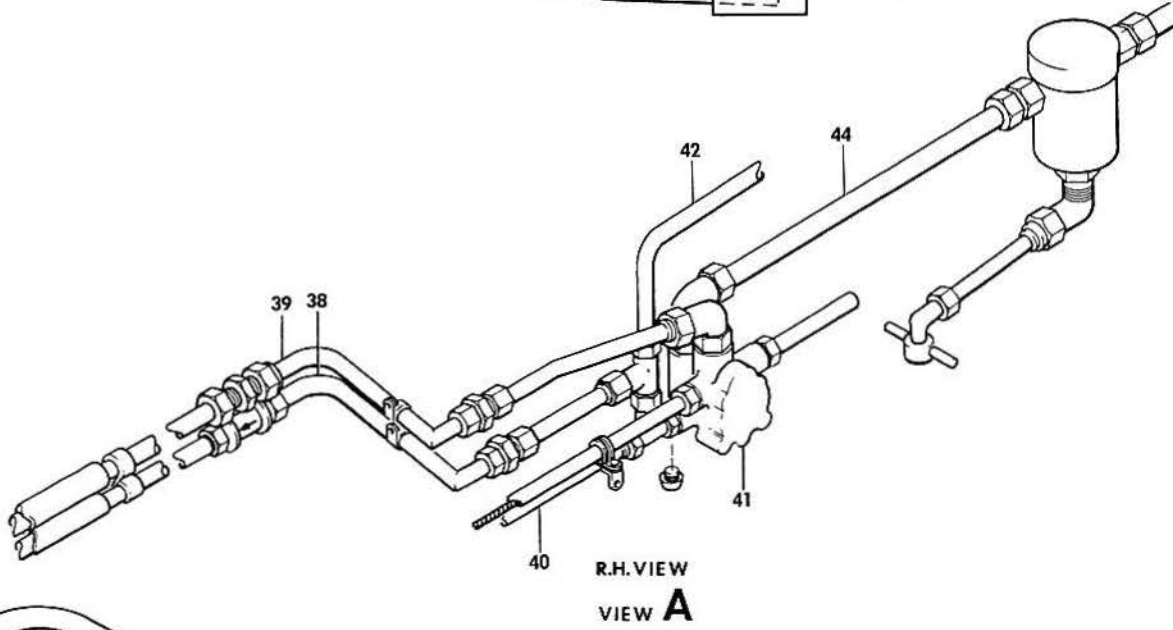
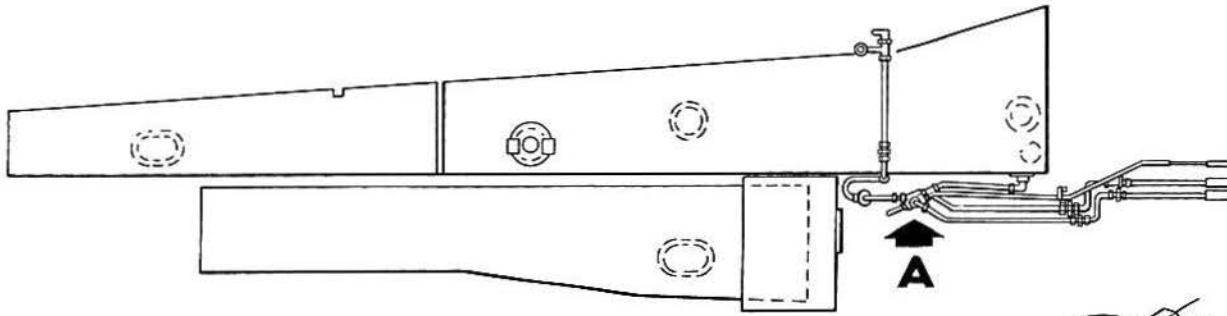


B60-281-3

B E E C H C R A F T
DUKE 860
I L L U S T R A T E D P A R T S C A T A L O G

GAMA/ATA CODE & INDEX NO.	PART NO.	DESCRIPTION	UNITS PER ASSY	USABLE ON CODE
20-01	60-920000-239	FUEL SYSTEM INSTALLATION.	NP	
	60-9005-1 S	. KIT,MODIFICATION/FUEL BOOST PUMP/	1	1
		/SEE SERVICE INSTRUCTIONS 0650-285/		
- 1	60-389010-15	. PUMP,FUEL BOOST	1	2
		/ATTACHING PARTS/		
- 2	MS20073-04-07	. BOLT.	12	
	AN960-416L	. WASHER.	12	
		-----*		
	R 102-3006-1	. KIT,FILTER INSTL NOISE.	1	
- 3	35-921502-1	. GASKET.	2	
- 4	60-920000-131	. FITTING	1	
- 5	MS20913-1	. PLUG/TANK DRAIN/.	1	
- 6	MS20913-3	. PLUG/OUTLET/.	1	
- 7	CCA3400	. VALVE,DRAIN	1	
	R 6208	. CLAMP/REPLACES 35-921533/	1	
- 8	35-921532	. WASHER.	1	
	36-920022-3	. SPACER.	1	
- 9	AN816-8	. NIPPLE.	1	
- 10	156587-8D0104	. HOSE ASSY	1	
- 11	60-921013-3	. FUEL CELL OUTLET/REPLS 60-921013/	1	
	60-921014	. GASKET.	1	
	AN509C10R6	. SCREW	5	
	AN3H4A	. BOLT.	2	
	AN960-10L	. WASHER.	2	
- 12	AN921-8D	. ELBOW	1	
	MS29512-8	. O RING.	1	
	AN924-8D	. NUT	1	
- 13	60-920000-9	. TUBE ASSY	1	
- 14	AN80408	. TEE	1	
	MS29512-8	. O RING.	1	
	AN924-8D	. NUT	1	
- 15	HE780-1	. VALVE,LH SELECTOR/SEE CHAPTER 28-20-20/	NP	4
	HE780-5	. VALVE,LH/SPARES REPLACEMENT FOR HE780-1/.	1	7
- 16	MS20913-1S	. PLUG,PIPE	1	
- 17	AN921-8D	. ELBOW	1	
	MS29512-8	. O RING.	1	
	AN924-8D	. NUT	1	
- 18	AN837-8D	. ELBOW	1	
	MS29512-8	. O RING.	1	
	AN924-8D	. NUT	1	
	60-924001-27	. VALVE CONTROL INSTALLATION.	NP	
- 19	96-924016-21	. TUBE ASSY	2	
- 20	MS21919DG8	. CLAMP	6	
		/ATTACHING PARTS/		
	AN515-8R	. SCREW	10	
	AN960-8L	. WASHER.	10	
	130909N28	. NUT	10	
		-----*		
- 21	AN743-12	. BRACKET	4	
	AN931A9S13	. GROMMET	2	
- 22	A830	. HOUSING ASSY.	2	
	54-2566-2063	. HOUSING ASSY/ALTERNATE FOR A830/.	2	
	MS35489-39S	. GROMMET/USED WITH A830/	2	
	AN931A9S13	. GROMMET/USED WITH 54-2566-2063/	2	
	60-924014-19	. PANEL INSTL,FUEL SELECTOR	NP	
- 23	60-924014-21	. PANEL ASSY.	1	
- 24	60-924014-23	. PLATE	1	
		/ATTACHING PARTS/		
	AN509-8R8	. SCREW	2	
	MS27039-0806	. SCREW	1	
	AN509-8R10	. SCREW	2	
	MS27039-0808	. SCREW	1	
		-----*		
- 25	HE1431-575	. CABLE	2	

BEECHCRAFT
DUKE B60
ILLUSTRATED PARTS CATALOG

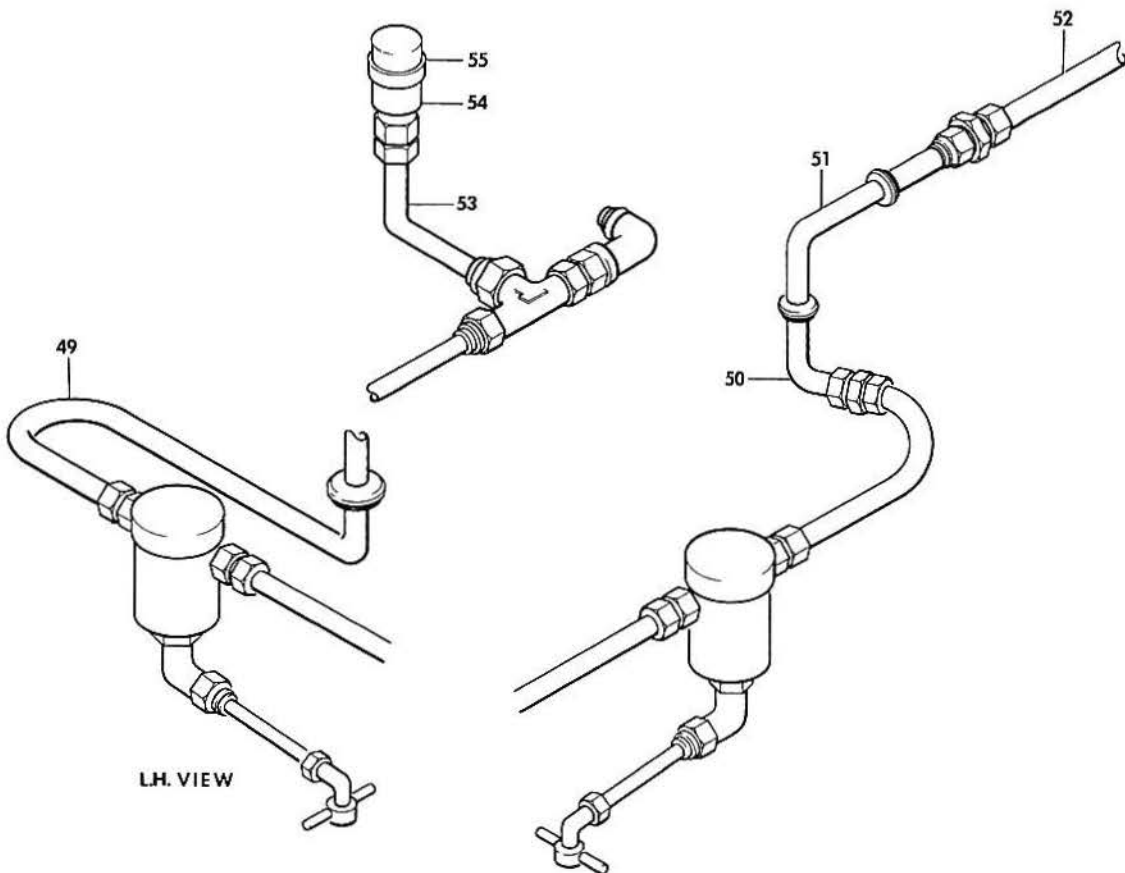
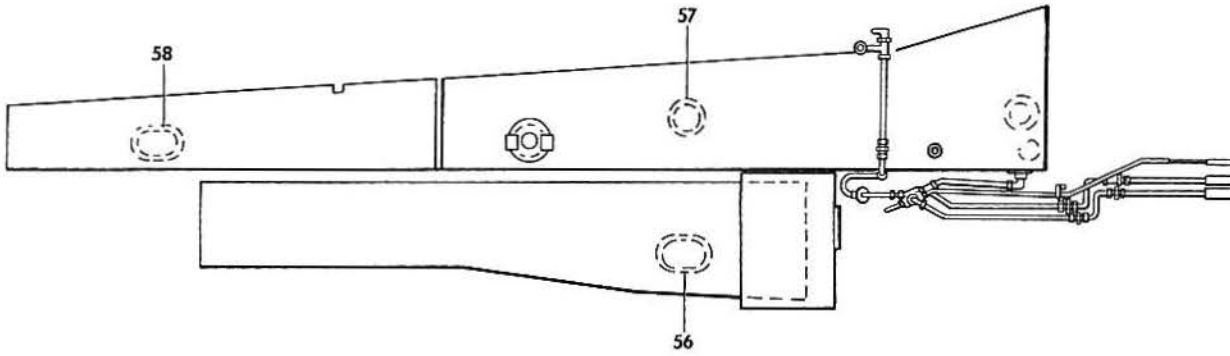


B60-281-4

BEECHCRAFT
DUKE B60
ILLUSTRATED PARTS CATALOG

GAMA/ATA CODE & INDEX NO.	PART NO.	DESCRIPTION	UNITS PER ASSY	USABLE ON CODE
20-01 - 26	60-920000-143	. TUBE ASSY	1	
- 27	8R6X-S	. TEE	1	
	8-4TROTX-S	. REDUCER	1	
- 28	60-920000-11	. TUBE ASSY	1	
- 29	60-920000-15	. TUBE ASSY	1	
	AN815-8D	. UNION	3	
- 30	60-921033-1	. TUBE ASSY	1	
- 31	60-921032-1	. TUBE ASSY	1	
- 32	AN742-D8	. CLAMP	2	
		/ATTACHING PARTS/		
	MS35207-262	. SCREW	2	
	AN960D10	. WASHER	2	
	130909N29	. NUT	2	
		-----*		
- 33	50-380170-5	. CHECK VALVE	1	
	72	. GROMMET	2	
- 34	755-8-2-8	. CLAMP	2	
		/ATTACHING PARTS/		
	130909B15	. BOLT	1	
	AN960-10L	. WASHER	1	
	130909N29	. NUT	1	
	NAS43DD3-16	. SPACER	1	
		-----*		
- 35	114693-6-01800	. TUBE	2	
- 36	60-920000-75	. TUBE ASSY	1	
- 37	60-920000-77	. TUBE ASSY	1	
- 38	60-921031-5	. TUBE ASSY	1	
- 39	60-921031-1	. TUBE ASSY	1	
- 40	60-920000-10	. TUBE ASSY, RH.	1	
- 41	HE780-3	. VALVE, RH SELECTOR/SEE CHAPTER 28-20-20/	NP	4
	HE780-7	. VALVE, RH/SPARES REPLACEMENT FOR HE780-3/	1	7
- 42	60-920000-144	. TUBE ASSY, RH.	1	
- 43	002-920000-43	. TUBE ASSY, LH.	1	
- 44	002-920000-44	. TUBE ASSY, RH.	1	
- 45	33-199-105-3	. STRAINER/SUPERSEDES HE 760-17/	1	4
		/SEE BEECHCRAFT S.I. 0802-288/		
	95-920001-153	. BRACKET	1	
		/ATTACHING PARTS/		
	AN4-14A	. BOLT	2	
	AN823-8D	. NIPPLE	2	
	AN960-416L	. WASHER	2	
	130909N32	. NUT	2	
		-----*		
- 46	AN823-4D	. ELBOW	1	
- 47	96-920001-235	. TUBE ASSY	1	
- 48	CCA4850	. VALVE	1	
	AN910-1D	. COUPLING	1	5
	AN910-1J	. COUPLING	1	6
	AN822-4D	. ELBOW	1	
	MS21919DG10	. CLAMP	1	
		/ATTACHING PARTS/		
	AN515-8R	. SCREW	1	
	AN960-8	. WASHER	1	
	AN365-832	. NUT	1	
		-----*		

BEECHCRAFT
DUKE B60
ILLUSTRATED PARTS CATALOG

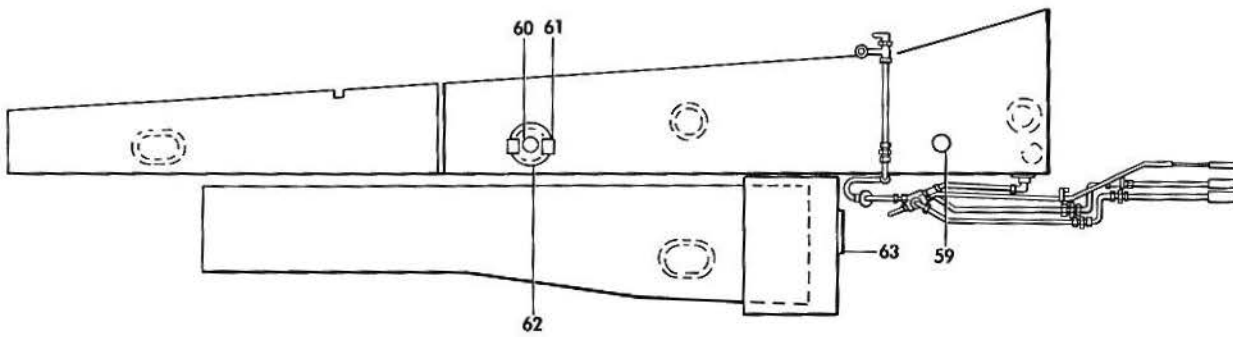


B60-281-5

BEECHCRAFT
DUKE B60
ILLUSTRATED PARTS CATALOG

GAMA/ATA CODE & INDEX NO.	PART NO.	DESCRIPTION	UNITS PER ASSY	USABLE ON CODE
		1 2 3 4 5 6 7		
20-01 - 49	60-920000-19	. TUBE ASSY, LH.	1	
	755-8-2-8	. CLAMP	1	
	AN743-13	. BRACKET	1	
		/ATTACHING PARTS/		
	AN525-10R8	. SCREW	1	
	AN960-10	. WASHER.	1	
	NAS679A3	. NUT	1	
		-----*		
	MS35490-15	. GROMMET	1	
	- 50	60-920000-23	. TUBE ASSY, RH.	1
AN815-8D		. UNION	1	
MS35490-15		. GROMMET	1	
- 51	60-920000-69	. TUBE ASSY, RH.	1	
	755-8-2-8	. CLAMP	1	
	AN743-13	. BRACKET	1	
	/ATTACHING PARTS/			
	AN525-10R8	. SCREW	1	
	AN960-10	. WASHER.	1	
	NAS679A3	. NUT	1	
	-----*			
	MS35490-15	. GROMMET	1	
- 52	AN815-8D	. UNION	1	
	60-920000-63	. TUBE ASSY, RH.	1	
	755-8-2-8	. CLAMP	1	
	AN743-13	. BRACKET	1	
	/ATTACHING PARTS/			
	AN525-10R8	. SCREW	1	
	AN960-10	. WASHER.	1	
	NAS679A3	. NUT	1	
	-----*			
- 53	MS35490-15	. GROMMET	1	
	60-920000-163	. TUBE ASSY	1	
	AN815-4D	. UNION	1	
	MS29512-04	. O RING	1	
- 54	60-389012-1	. SWITCH, PRESSURE	1	
- 55	AN742-20	. CLAMP	1	
		/ATTACHING PARTS/		
	AN520-10R	. SCREW	1	
	AN960-10L	. WASHER.	1	
	NAS680X3	. NUT PLATE	1	
	-----*			
- 56	50-921520	. COVER	2	
	50-921521	. GASKET.	2	
		/ATTACHING PARTS/		
	AN960-416L	. WASHER.	24	
	MS20073-04-04	. BOLT.	24	
	-----*			
- 57	50-921509-9	. PLATE	1	
	35-921502	. GASKET.	1	
		/ATTACHING PARTS/		
	MS20073-04-03	. BOLT.	1	
	AN960-416L	. WASHER.	1	
	-----*			
- 58	50-921041	. COVER	2	
	50-921521	. GASKET.	2	
		/ATTACHING PARTS/		
	NAS501-4H4A	. BOLT.	24	
	AN960PD416L	. WASHER.	24	
	-----*			

BEECHCRAFT
DUKE B60
ILLUSTRATED PARTS CATALOG



B60-281-6

B E E C H C R A F T
DUKE 860
I L L U S T R A T E D P A R T S C A T A L O G

GAMA/ATA CODE & INDEX NO.	PART NO.	DESCRIPTION							UNITS PER ASSY	USABLE UN CODE	
		1	2	3	4	5	6	7			
20-01 - 59	58-380000-3	.	T	R	A	M	I	T	T	1	
	35-921503	.	G	A	S	K	E	T	.	1	
		/ATTACHING PARTS/									
R	AN502-10-10	.	S	C	R	E	W	.	5		
	AN960-10L	.	W	A	S	H	E	R	.	5	

- 60	58-380001-9	.	T	R	A	M	I	T	T	1	
	58-380001-11	.	T	R	A	M	I	T	T	1	
	35-921503	.	G	A	S	K	E	T	.	1	
		/ATTACHING PARTS/									
	AN502-10-4	.	S	C	R	E	W	.	5		
	AN960-10L	.	W	A	S	H	E	R	.	5	

- 61	60-369032	.	I	N	S	A	L	A	T	2	
- 62	002-920020-9	.	P	L	A	T	E	A	S	1	
	35-921502	.	G	A	S	K	E	T	.	1	
		/ATTACHING PARTS/									
	MS20073-04-03	.	B	O	L	T	.	.	6		
	MS20073-04-04	.	B	O	L	T	.	.	6		
	AN960-416L	.	W	A	S	H	E	R	.	12	
	MS21266-2N	.	G	R	O	M	M	E	T	1	

- 63	60-389031-9	.	T	R	A	M	I	T	T	1	
	60-389031-11	.	T	R	A	M	I	T	T	1	
		/ATTACHING PARTS/									
R	AN502-10-10	.	S	C	R	E	W	.	5		
	MS15795-707	.	W	A	S	H	E	R	.	5	
R	14-536	.	W	A	S	H	E	R	,	5	

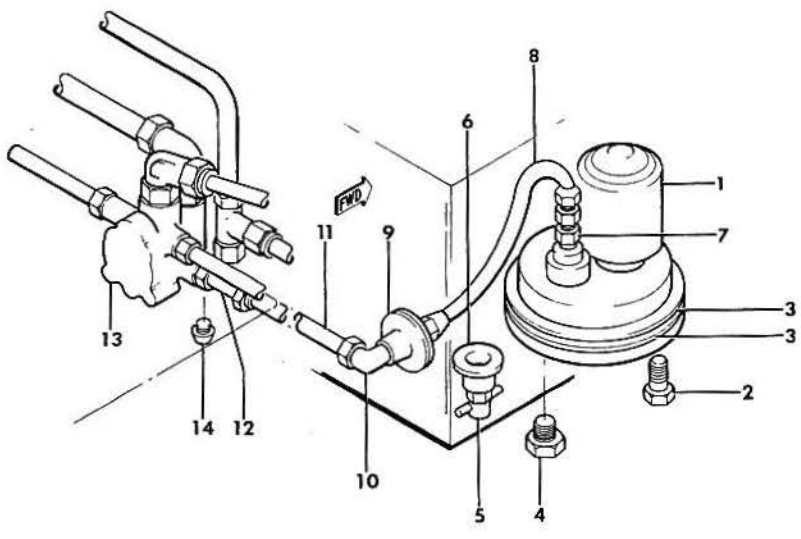
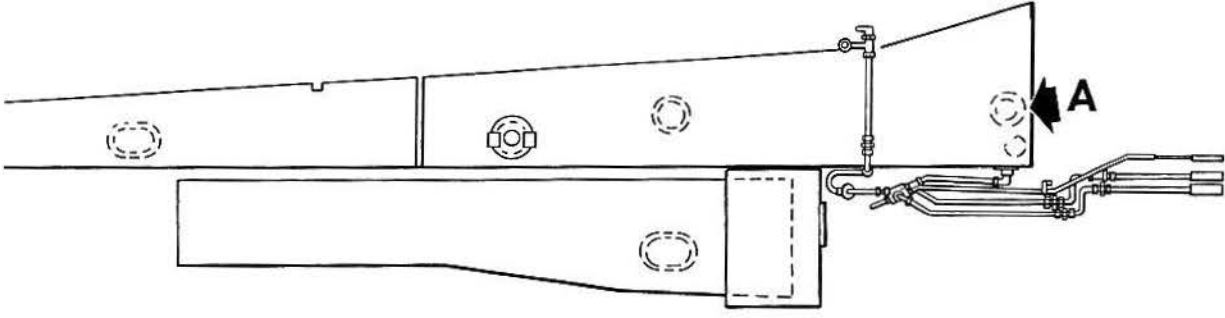
C O D E S O F E F F E C T I V I T Y

1	P-247 THRU P-280	2	P-281 THRU P-347, P-349 THRU P-364
3	P-247 THRU P-347, P-349 THRU P-364	4	P-247 THRU P-258, P-260 THRU P-265, P-267 THRU P-269, P-272 AND P-273, P-275 AND P-276
5	P-247 THRU P-271	6	P-272 THRU P-347, P-349 THRU P-364
7	P-259,P-266,P-270, P-271,P-274, P-277 THRU P-347 P-349 THRU P-364		

BEECHCRAFT
DUKE B60
ILLUSTRATED PARTS CATALOG

28-20-02
FUEL DISTRIBUTION
P-348,P-365 AND AFTER

BEECHCRAFT
DUKE B60
ILLUSTRATED PARTS CATALOG



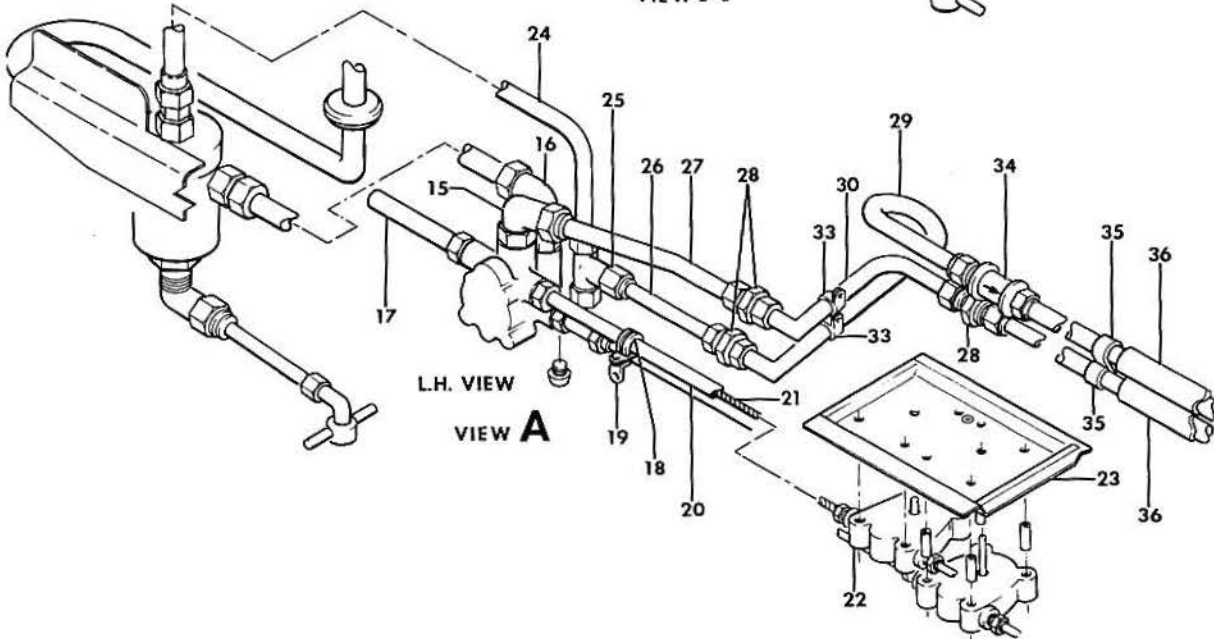
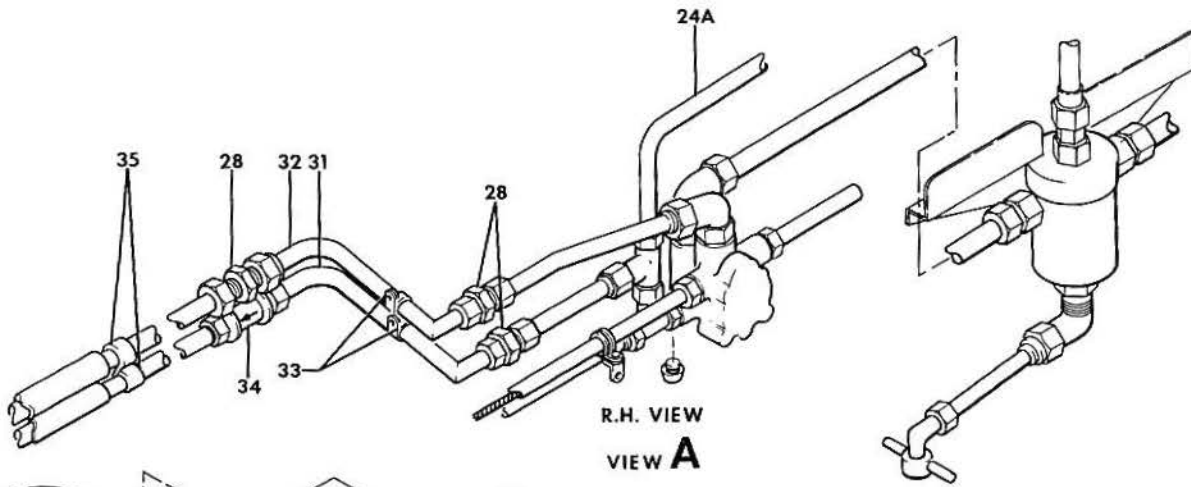
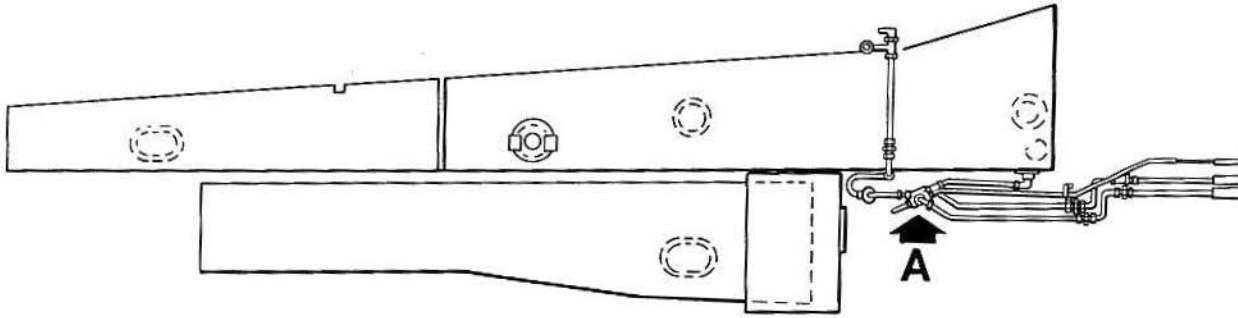
VIEW A

B60-281-12

BEECHCRAFT
DUKE 860
ILLUSTRATED PARTS CATALOG

GAMA/ATA CODE & INDEX NO.	PART NO.	DESCRIPTION	UNITS PER ASSY							USABLE ON CODE	
			1	2	3	4	5	6	7		
20-02	60-920002-1	FUEL SYSTEM INSTL/202 GALLON CAPACITY//	NP	1	
	60-920002-13	FUEL SYSTEM INSTL/202 GALLON CAPACITY//	NP	2	
	60-920002-3	FUEL SYSTEM INSTL/232 GALLON CAPACITY//	NP	1	
	60-920002-15	FUEL SYSTEM INSTL/232 GALLON CAPACITY//	NP	2	
	- 1	60-389010-15	. PUMP, FUEL BOOST	2	3
			/ATTACHING PARTS/								
	- 2	MS20073-04-06	. BOLT.	12	
		AN960-416	. WASHER.	12	
			-----*								
	- 3	35-921502	. GASKET.	4	3
	- 4	1/4-18NPT	. PLUG, DRAIN/FUEL BOOST PUMP.	2	3
		R 102-3006-1	. KIT, FILTER INSTL NOISE/REPLACES 60-361016-1/.	1	11
		5JX2698	. FILTER, NOISE.	2	9
	- 5	CCA3400	. VALVE, FUEL CELL DRAIN	2	3
	R 6208	. CLAMP/REPLACES 35-921533/	1		
- 6	35-921532	. WASHER.	2	3	
	000-110241-1	. BRACKET, SUPPORT	2	3	
	60-921043-3	. PLACARD	2	3	
- 7	AN816-8	. NIPPLE.	2	3	
- 8	156587-8D0104	. HOSE ASSY	2	3	
- 9	60-921013-3	. OUTLET, FUEL CELL.	2	3	
		/ATTACHING PARTS/									
	MS24694S48	. SCREW/USE WITH GOODYEAR FUEL CELLS/	5		
	MS24694S50	. SCREW/USE WITH UNIROYAL FUEL CELLS/	5		
	AN3H4A	. BOLT.	2		
	AN960-10L	. WASHER.	2		
		-----*									
	60-921014	. GASKET.	2	3	
- 10	AN921-8D	. ELBOW	2	3	
	MS29512-8	. O RING.	2	3	
	AN924-8U	. NUT	2	3	
- 11	60-920000-9	. TUBE ASSY, LH.	1	3	
	60-920000-10	. TUBE ASSY, RH.	1	3	
- 12	AN80408	. TEE	2	3	
	MS29512-8	. O RING.	2	3	
	AN924-8D	. NUT	2	3	
- 13	HE780-5	. VALVE, LH FUEL SELECTOR/SEE CHAPTER 28-20-20/.	1	3	
	HE780-7	. VALVE, RH FUEL SELECTOR/SEE CHAPTER 28-20-20/.	1	3	
		/ATTACHING PARTS/									
	130909B15	. BOLT.	3		
	AN960-10L	. WASHER/1 UNDER EA. BOLT HEAD, 1 UNDER EA. NUT/.	6		
	130909N29	. NUT	3		
		-----*									
- 14	MS20913-1S	. PLUG, PIPE/FUEL SELECTOR VALVE DRAIN/.	2	3	
	60-921045-1	. SUPPORT ASSY, LH	1	3	
	60-921045-2	. SUPPORT ASSY, RH	1	3	
		/ATTACHING PARTS/									
	MS27039-0806	. SCREW	4		
	1009510D040ZD	. WASHER/1 UNDER SCREW HEAD, 1 UNDER NUT/	8		
	MS21042L08	. NUT	4		
		-----*									
	60-921045-3	. SUPPORT, LH.	1	3	
	60-921045-4	. SUPPORT, RH.	1	3	
	60-921045-5	. CLIP, SUPPORT.	4	3	

BEECHCRAFT
DUKE B60
ILLUSTRATED PARTS CATALOG

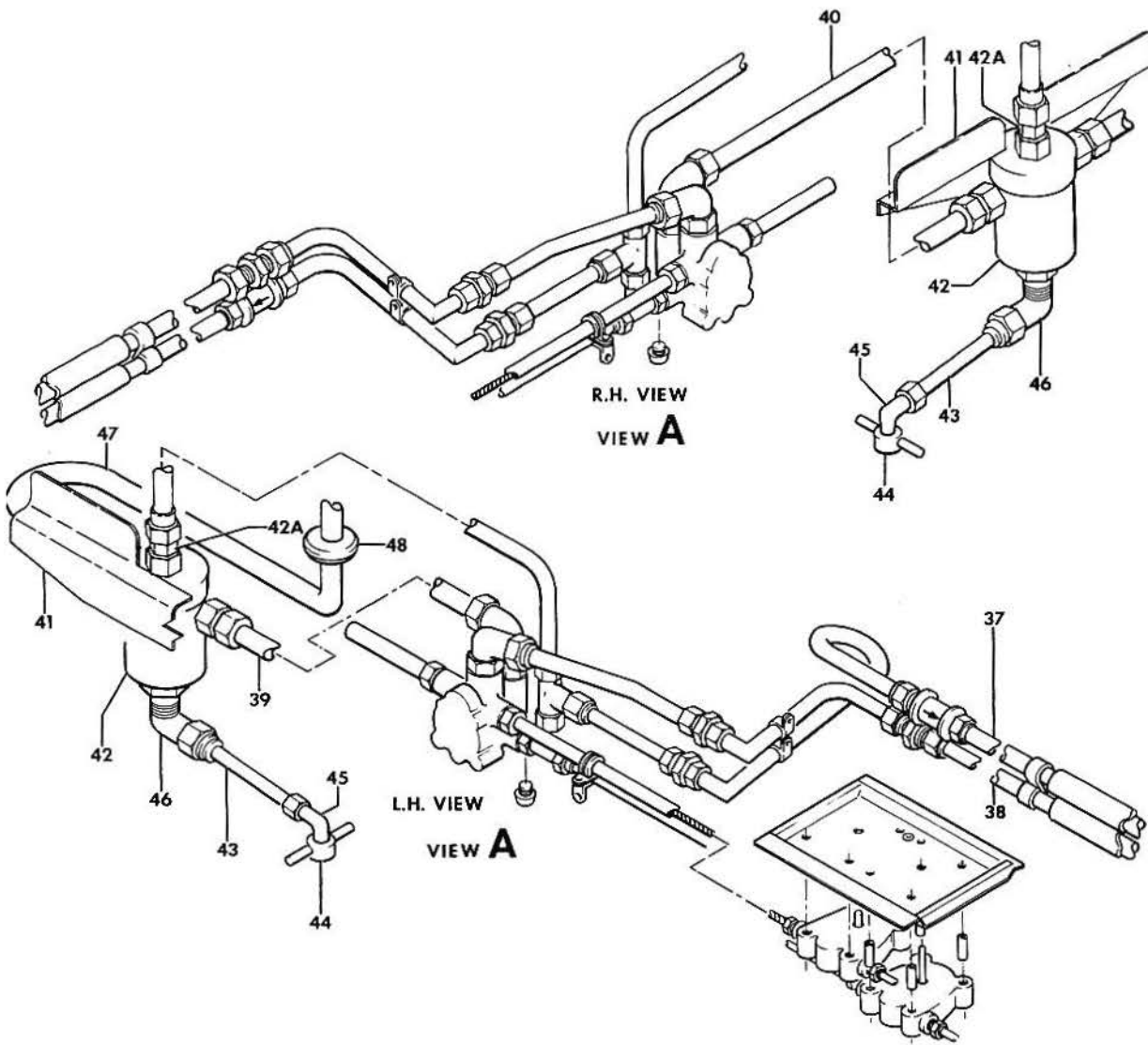
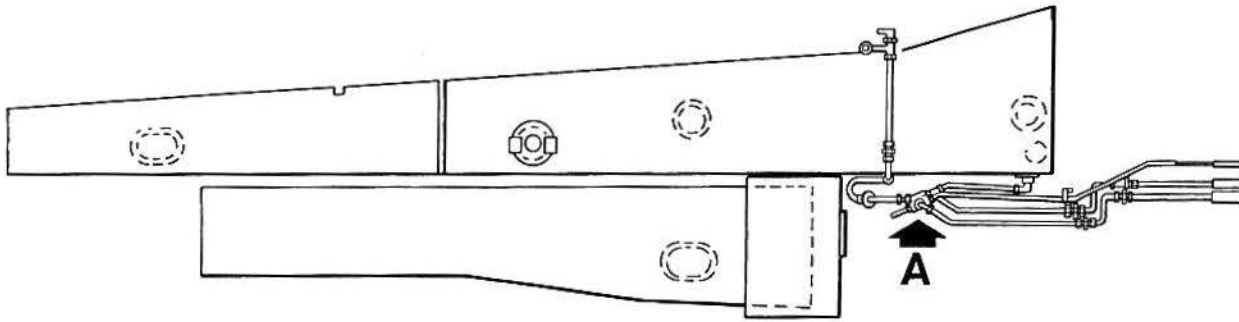


B60-281-13

B E E C H C R A F T
DUKE B60
I L L U S T R A T E D P A R T S C A T A L O G

GAMA/ATA CODE & INDEX NO.	PART NO.	DESCRIPTION	UNITS PER ASSY	USABLE ON CODE
20-02 - 15	AN921-8D	. ELBOW	2	3
	MS29512-8	. O RING	2	3
	AN924-8D	. NUT	2	3
- 16	AN837-8D	. ELBOW	2	3
	MS29512-8	. O RING	2	3
	AN924-8D	. NUT	2	3
	60-924001-27	. VALVE CONTROL INSTL/202 GALLON CAPACITY/	NP	3
	60-924001-31	. VALVE CONTROL INSTL/232 GALLON CAPACITY/	NP	3
- 17	96-924016-21	. TUBE ASSY	2	3
- 18	MS21919DG8	. CLAMP	6	3
		/ATTACHING PARTS/		
	MS35206-245	. SCREW	1	
	AN960-8L	. WASHER	1	
	130909N28	. NUT	1	
		-----*		
- 19	AN743-12	. CLIP,SUPDRT.	1	5
- 20	54-2566-2089	. HOUSING ASSY.	2	3
	MS35489-14	. GROMMET	2	3
- 21	HE1431-575	. CABLE	2	3
	60-924014-19	. PANEL INSTL,FUEL SELECTOR/202 GAL. CAP./	NP	3
	60-924014-25	. PANEL INSTL,FUEL SELECTOR/232 GAL. CAP./	NP	3
- 22	60-924014-21 PANEL ASSY/202 GALLON CAPACITY/	2	3
	60-924014-27 PANEL ASSY/232 GALLON CAPACITY/	2	3
- 23	60-924014-23 PLATE	2	3
		/ATTACHING PARTS/		
	AN509-8RB SCREW	2	
	MS27039-0806 SCREW	1	
	AN509-8R10 SCREW	2	
	MS27039-0808 SCREW	1	
		-----*		
- 24	60-920000-143	. TUBE ASSY,LH.	1	3
- 24A	60-920000-144	. TUBE ASSY,RH.	1	3
- 25	8R6X-S	. TEE	2	3
	8-4TROTX-S	. REDUCER	2	3
- 26	60-920000-249	. TUBE ASSY	2	3
- 27	60-920000-251	. TUBE ASSY	2	3
- 28	AN815-8D	. UNION	6	3
- 29	60-921032-1	. TUBE ASSY,LH.	1	3
- 30	60-921033-1	. TUBE ASSY,LH.	1	3
- 31	60-921031-1	. TUBE ASSY,RH.	1	3
- 32	60-921031-5	. TUBE ASSY,RH.	1	3
- 33	755-8-2-8	. CLAMP	4	3
		/ATTACHING PARTS/		
	MS35207-262	. SCREW	1	
	AN960-D10L	. WASHER	1	
	130909N29	. NUT	1	
		-----*		
- 34	50-380170-1	. VALVE,CHECK	2	3
- 35	755-8-2-8	. CLAMP	4	3
		/ATTACHING PARTS/		
	130909B15	. BOLT	1	
	AN960-10L	. WASHER	1	
	130909N29	. NUT	1	
		-----*		
- 36	114693-6-01800	. TUBE,PLASTIC.	2	3

BEECHCRAFT
DUKE B60
ILLUSTRATED PARTS CATALOG

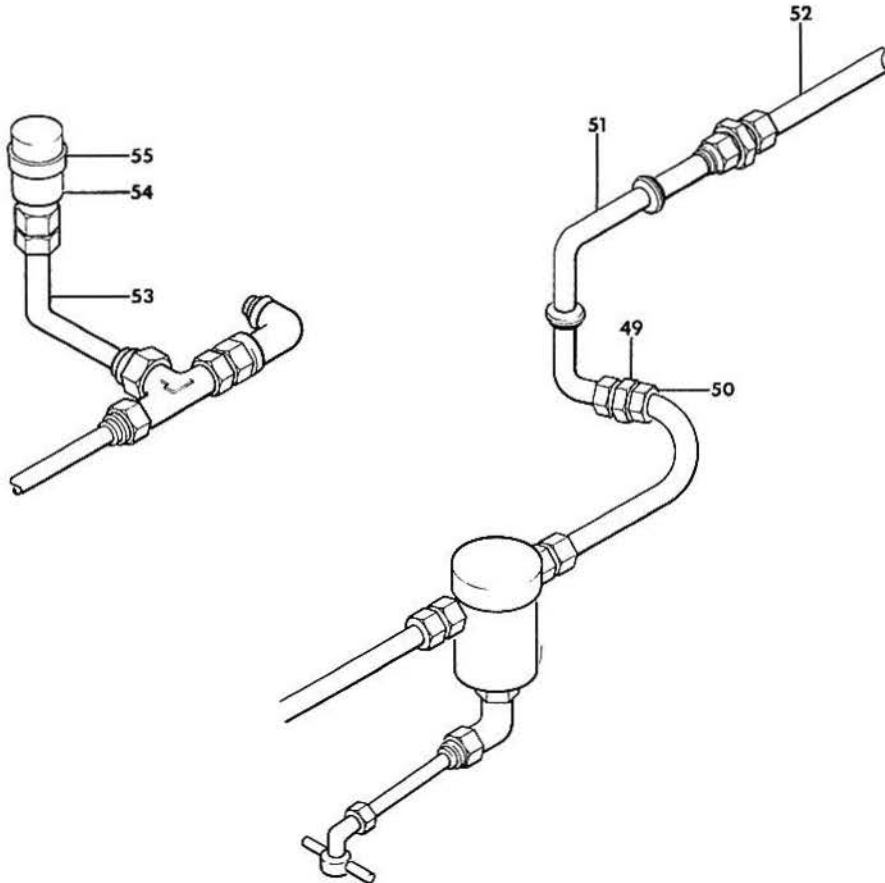
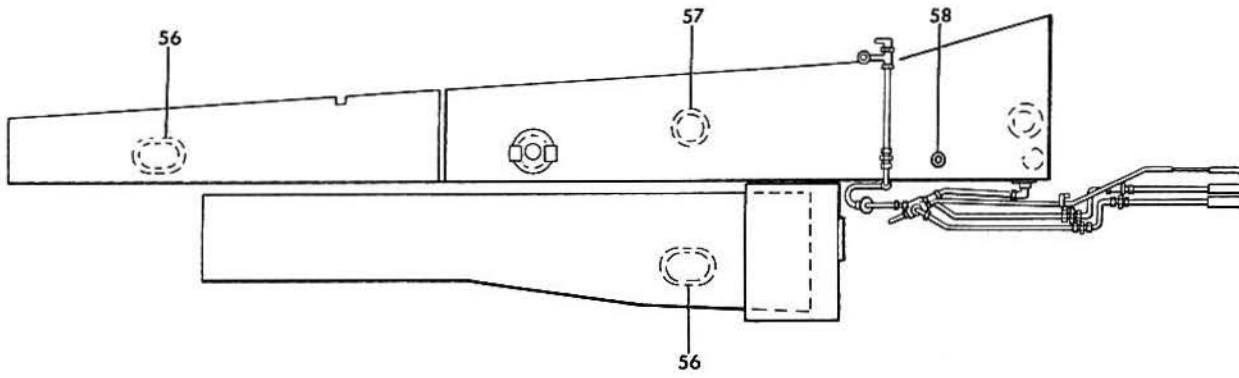


860-281-14

B E E C H C R A F T
DUKE B60
I L L U S T R A T E D P A R T S C A T A L O G

GAMA/ATA CODE & INDEX NO.	PART NO.	DESCRIPTION	UNITS PER ASSY	USABLE ON CODE		
					1	2
20-02 - 37	60-920000-245	. TUBE ASSY	1	3		
- 38	60-920000-247	. TUBE ASSY	1	3		
	72	. GROMMET	4			
- 39	002-920000-43	. TUBE ASSY,LH.	1	3		
- 40	002-920000-44	. TUBE ASSY,RH.	1	3		
- 41	58-920038-1	. SHIELD,HEAT/FOR FUEL STRAINER PROTECTION/	2	3		
- 42	33-199-105-3	. STRAINER,FUEL	2	3		
		/ATTACHING PARTS/				
	60-920001-151	. BRACKET,SUPPORT	1			
	AN4-14A	. BOLT.	2			
	AN960-416L	. WASHER.	2			
	130909N32	. NUT	2			
	AN816-8D	. ELBOW	1			
	AN823-8D	. NIPPLE.	1			
		+				
- 42A	A1510	. VALVE,RELIEF.	2	3		
- 43	002-920000-95	. TUBE ASSY/AFT OF FRONT SPAR FACE-WHEELWELL/	2	6		
	60-920002-17	. TUBE ASSY/AFT OF FRONT SPAR FACE-WHEELWELL/	2	7		
	60-920002-23	. TUBE ASSY/AFT OF FRONT SPAR FACE-WHEELWELL/	2	10		
	96-920001-87	. TUBE ASSY,LH/FWD OF REAR SPAR FACE-WHEELWELL/	1	6		
	60-920002-19	. TUBE ASSY,LH/FWD OF REAR SPAR FACE-WHEELWELL/	1	7		
	60-920002-21	. TUBE ASSY,LH/FWD OF REAR SPAR FACE-WHEELWELL/	1	10		
	96-920001-88	. TUBE ASSY,RH/FWD OF REAR SPAR FACE-WHEELWELL/	1	6		
	60-920002-20	. TUBE ASSY,RH/FWD OF REAR SPAR FACE-WHEELWELL/	1	7		
	60-920002-22	. TUBE ASSY,RH/FWD OF REAR SPAR FACE-WHEELWELL/	1	10		
		/ATTACHING PARTS/				
	AN743-6	. BRACKET,SUPPORT	2			
	MS35207-264	. SCREW	1			
	AN960-10	. WASHER.	1			
	130909N29	. NUT	1			
		+				
- 44	MS21919F4	. CLAMP	2	10		
	CCA4850	. VALVE,DRAIN	4	6		
	710C-4X	. VALVE,DRAIN	4	8		
	AN910-1J	. COUPLING.	4	6		
	58-920040-1	. BRACKET	4	8		
	95-920001-151	. CLIP,SUPPORT.	2	6		
		/ATTACHING PARTS/				
	MS35206-243	. SCREW	1			
	AN960-8	. WASHER.	1			
	AN365-832	. NUT	1			
		+				
	MS21919D610	. CLAMP	2	6		
	MS35333-47	. WASHER.	4	8		
	AN924-8D	. NUT	4	8		
- 45	AN822-4D	. ELBOW	4	6		
	4C6X	. ELBOW	4	8		
- 46	AN823-4D	. ELBOW	2	6		
	MS20822-4D	. ELBOW	2	8		
- 47	60-920000-19	. TUBE ASSY,LH.	1	3		
	60-920000-23	. TUBE ASSY,RH.	1	3		
- 48	755-8-2-8	. CLAMP	2	3		
	AN743-13	. BRACKET,SUPPORT	2	3		
		/ATTACHING PARTS/				
	AN525-10R8	. SCREW	1			
	AN960-10	. WASHER.	1			
	NAS679A3	. NUT	1			
		+				
	MS35490-15	. GROMMET	2	3		

BEECHCRAFT
DUKE B60
ILLUSTRATED PARTS CATALOG



B60-281-15

B E E C H C R A F T
DUKE B60
I L L U S T R A T E D P A R T S C A T A L O G

GAMA/ATA CODE & INDEX NO.	PART NO.	DESCRIPTION							UNITS PER ASSY	USABLE ON CODE
		1	2	3	4	5	6	7		
20-02 - 49	AN815-8D	•	•	•	•	•	•	•	1	3
- 50	AN818-8D	•	•	•	•	•	•	•	2	3
	8-4TRTX-5	•	•	•	•	•	•	•	2	3
- 51	60-920000-69	•	•	•	•	•	•	•	1	3
- 52	60-920000-63	•	•	•	•	•	•	•	1	3
- 53	60-920000-163	•	•	•	•	•	•	•	2	3
	AN815-4U	•	•	•	•	•	•	•	2	3
	MS29512-04	•	•	•	•	•	•	•	2	3
- 54	60-389012-1	•	•	•	•	•	•	•	2	3
- 55	AN742-20	•	•	•	•	•	•	•	2	3
	/ATTACHING PARTS/									
	AN520-10R	•	•	•	•	•	•	•	1	
	AN960-10L	•	•	•	•	•	•	•	1	
	NAS680X3	•	•	•	•	•	•	•	1	

- 56	002-920020-3	•	•	•	•	•	•	•	4	3
	002-920020-1	•	•	•	•	•	•	•	4	3
	/ATTACHING PARTS/									
	MS20073-04-04	•	•	•	•	•	•	•	24	
	AN960-416L	•	•	•	•	•	•	•	24	

- 57	50-921509-9	•	•	•	•	•	•	•	2	3
	35-921502	•	•	•	•	•	•	•	2	3
	/ATTACHING PARTS/									
	MS20073-04-03	•	•	•	•	•	•	•	12	
	AN960-416L	•	•	•	•	•	•	•	12	

- 58	50-921041	•	•	•	•	•	•	•	2	3
	50-921521	•	•	•	•	•	•	•	2	3
	/ATTACHING PARTS/									
	NAS501-4H4A	•	•	•	•	•	•	•	24	
	AN960PD416L	•	•	•	•	•	•	•	24	

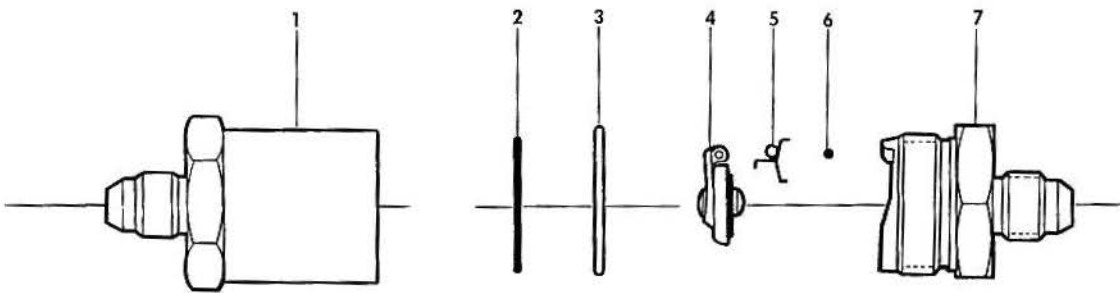
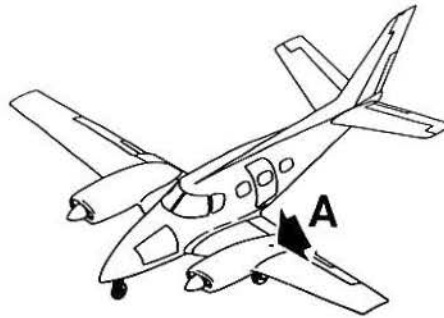
C O D E S O F E F F E C T I V I T Y

1	P-348, P-365 THRU P-401	2	P-402 AND AFTER
3	P-348, P-365 AND AFTER	4	P-348, P-365 THRU P-515
5	P-449 AND AFTER	6	P-348, P-365 THRU P-434
7	P-435 THRU P-481	8	P-435 AND AFTER
9	P-516 AND AFTER	10	P-482 AND AFTER
11	P-247 THRU P-516		

B E E C H C R A F T
DUKE B60
I L L U S T R A T E D P A R T S C A T A L O G

28-20-10
FUEL CHECK VALVE

BEECHCRAFT
DUKE B60
ILLUSTRATED PARTS CATALOG



VIEW A

B60-291-1

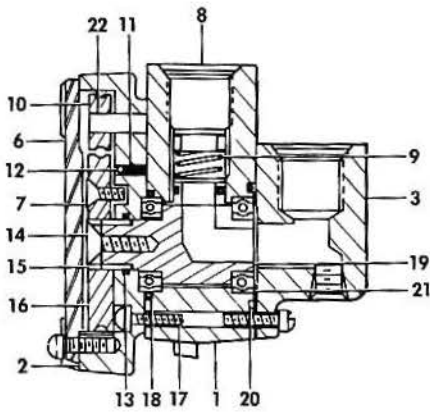
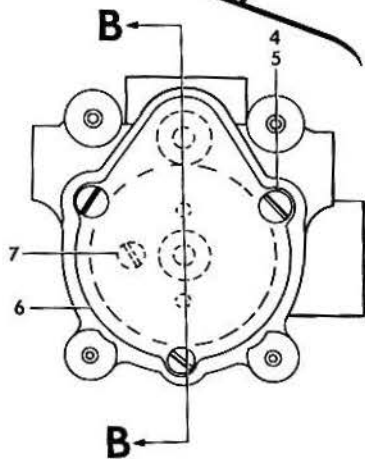
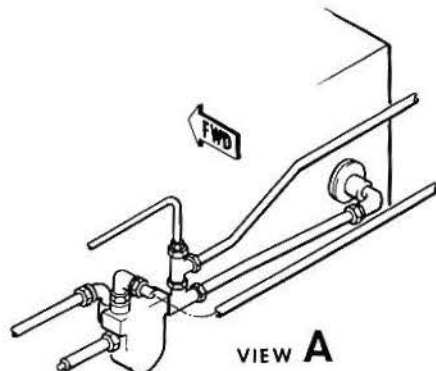
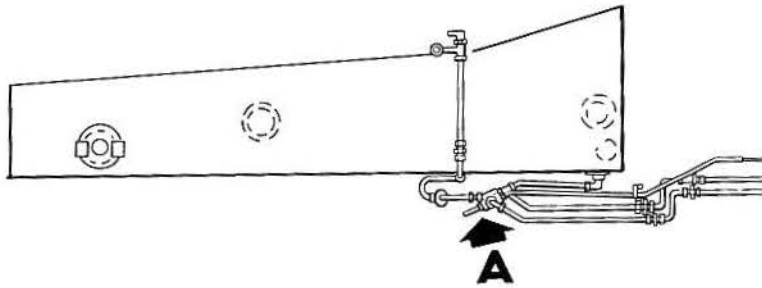
B E E C H C R A F T
DUKE B60
I L L U S T R A T E D P A R T S C A T A L O G

GAMA/ATA CODE & INDEX NO.	PART NO.	DESCRIPTION							UNITS PER ASSY	USABLE ON CODE	
		1	2	3	4	5	6	7			
20-10	50-380170-11	VALVE ASSY, SWING CHECK.	1	
- 1	366-08	VALVE BODY.	1	
- 2	MS29513-19	O RING.	1	
- 3	166-06-1	GASKET.	1	
- 4	266-13-1	SUB ASSY, SWING.	1	
- 5	166-07	PIN, HINGE	1	
- 6	266-05	SPRING.	1	
- 7	366-14	CAP	1	

BEECHCRAFT
DUKE B60
ILLUSTRATED PARTS CATALOG

28-20-20
FUEL SELECTOR VALVE

BEECHCRAFT
DUKE B60
ILLUSTRATED PARTS CATALOG



SECTION B-B

B60-289-2

BEECHCRAFT
DUKE B60
ILLUSTRATED PARTS CATALOG

GAMA/ATA CODE & INDEX NO.	PART NO.	DESCRIPTION							UNITS PER ASSY	USABLE UN CODE
		1	2	3	4	5	6	7		
20-20	HE780-1	VALVE ASSY,LH	FUEL	SELECTOR/ORDER	HE 780-5/				NP	1
	HE780-5	VALVE ASSY,LH	FUEL	SELECTOR					1	2
	HE780-3	VALVE ASSY,RH	FUEL	SELECTOR/ORDER	HE 780-7/				NP	1
	HE780-7	VALVE ASSY,RH	FUEL	SELECTOR					1	2
- 1	HE1804	BOUY.							1	
- 2	HE1803	BOX,GEAR.							1	
- 3	HE1805-1	SUMP,LH							1	
	HE1805-3	SUMP,RH							1	
- 4	AN500A10-10	SCREW							6	
- 5	AN935-10	WASHER.							3	
- 6	HE1728-2	COVER							1	
	HE-1863	GASKET.							1	
- 7	76D47-1	SCKEW,STOP.							1	
	R AN501A10-8	SCREW							3	
- 8	HE1810	GLAND							2	
- 9	HE1251	SPRING.							2	
	HE1373	WASHER.							2	
	HE1372-1	SEAL.							2	
	MS29513-13	O RING.							2	
- 10	HE1880	SLIDER.							1	
- 11	HE-2022	SPRING.							1	
- 12	75D88-5	BALL,STEEL.							1	
- 13	R 97075-1	SEAL,QUAD RING.							1	
- 14	HE1811	SCREW							1	
- 15	MS171494	PIN,RULL.							2	1
- 16	HE1809	GEAR.							1	
- 17	AN500-10-10	SCREW							4	
	R AN935-10	WASHER.							4	
- 16	MS29513-23	O RING.							1	
- 19	HE1806	MOTOR							1	1
	93D80-1	ROTOR ASSY.							2	2
- 20	MS29513-25	O RING.							1	
- 21	P33C32	BEARING							2	1
	AA33C32	BEARING							4	2
- 22	HE2035	SHAFT/DOWEL PIN/							1	
	MS16624-1025	KING,RETAINING.							1	
	MS20913-1S	PLUG,DRAIN.							1	
	81554	PLATE,NAME.							1	
	NAS815-4A	PLUG.							2	
	NAS815-8A	PLUG.							3	

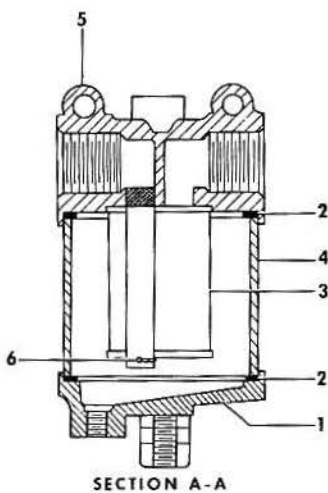
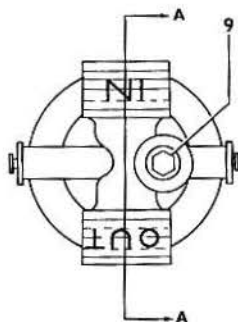
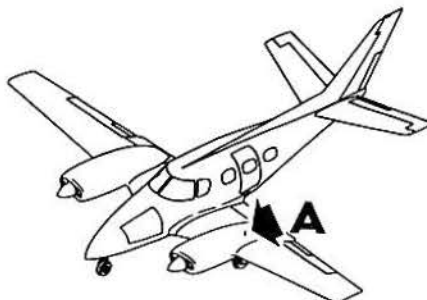
CODES OF EFFECTIVITY

1 P-247 THRU P-276 2 P-277 AND AFTER

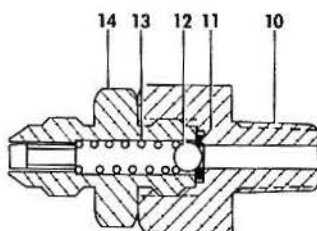
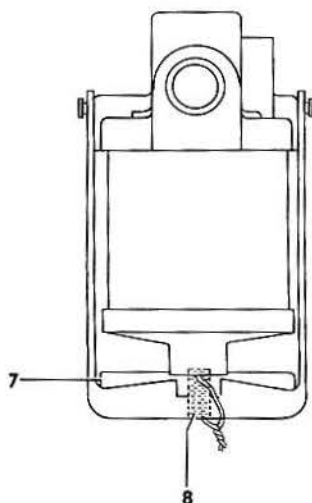
B E E C H C R A F T
DUKE 860
I L L U S T R A T E D P A R T S C A T A L O G

28-20-30
FUEL STRAINER AND RELIEF VALVE

BEECHCRAFT
DUKE B60
ILLUSTRATED PARTS CATALOG



SECTION A-A



VIEW A

B60-280.2

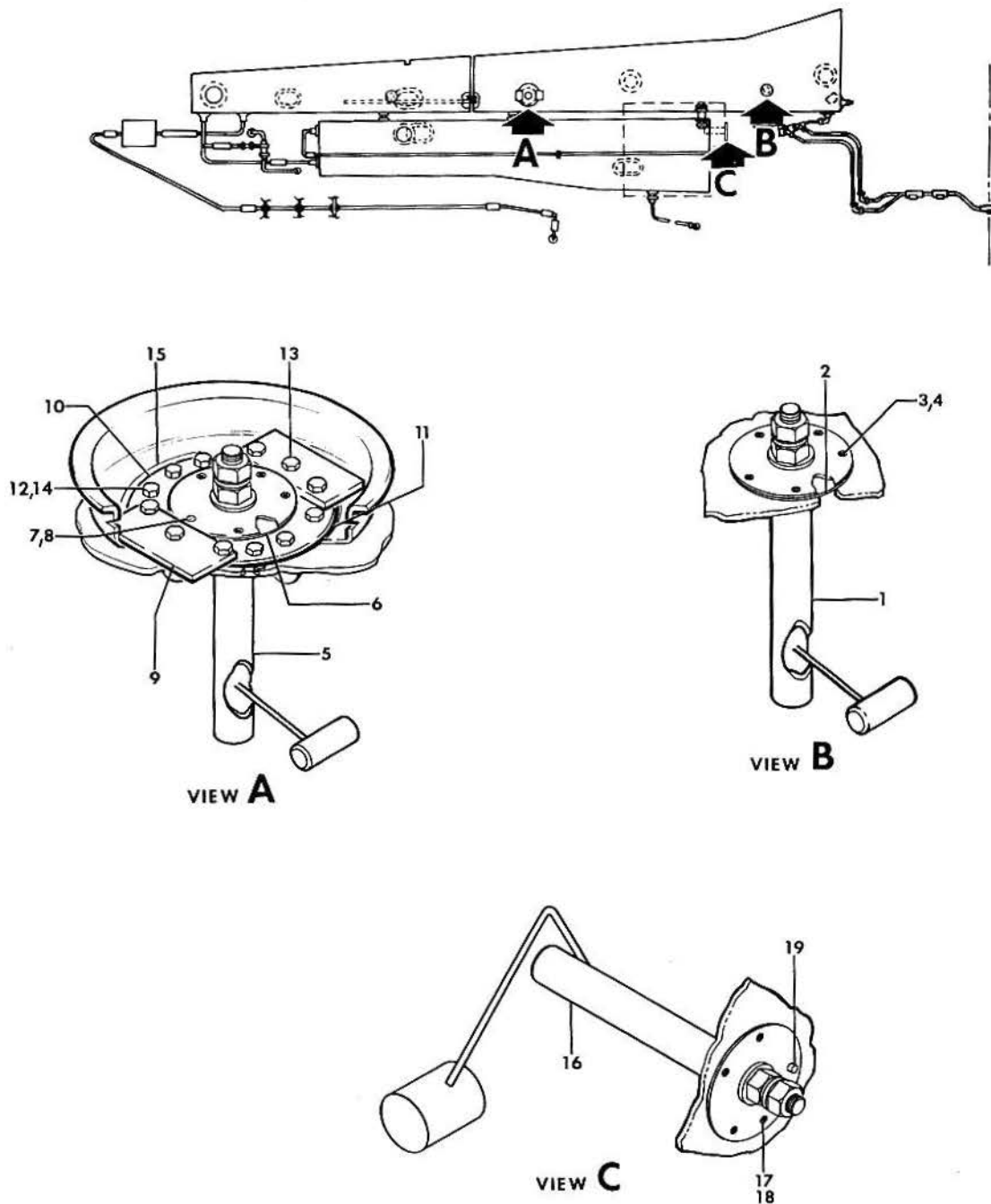
B E E C H C R A F T
DUKE B60
I L L U S T R A T E D P A R T S C A T A L O G

GAMA/ATA CODE & INDEX NO.	PART NO.	DESCRIPTION	1 2 3 4 5 6 7							UNITS PER ASSY	USABLE ON CODE	
20-30	33-199-105-3	STRAINER,FUEL									1	
- 1	33-199-1	. BOTTOM,FUEL STRAINER.									1	
- 2	33-199-6	. GASKET.									2	
- 3	33-199-909	. SCREEN ASSY									1	
- 4	608095-001	. BOWL,FUEL STRAINER.									1	
- 5	33-199-913	. CAP ASSY.									1	
- 6	33-199-36	. SPRING,CLIP									1	
- 7	33-199-8	. NUT									1	
- 8	33-199-7	. BOLT.									1	
- 9	AN932C2	. PLUG,PIPE/HEX HEAD/									1	
	A1510	VALVE,RELIEF.									1	
- 10	A1563A	. FITTING									1	
- 11	2-008	. O RING.									1	
- 12	3/16 DIA.	. BALL,STEEL.									1	
- 13	A1259A	. SPRING.									1	
- 14	A867A2	. FITTING									1	
	A1667A	. SOCKET,SET SCREW.									2	

B E E C H C R A F T
DUKE B60
I L L U S T R A T E D P A R T S C A T A L O G

28-40-02
FUEL TRANSMITTERS AND INDICATORS

BEECHCRAFT
DUKE B60
ILLUSTRATED PARTS CATALOG

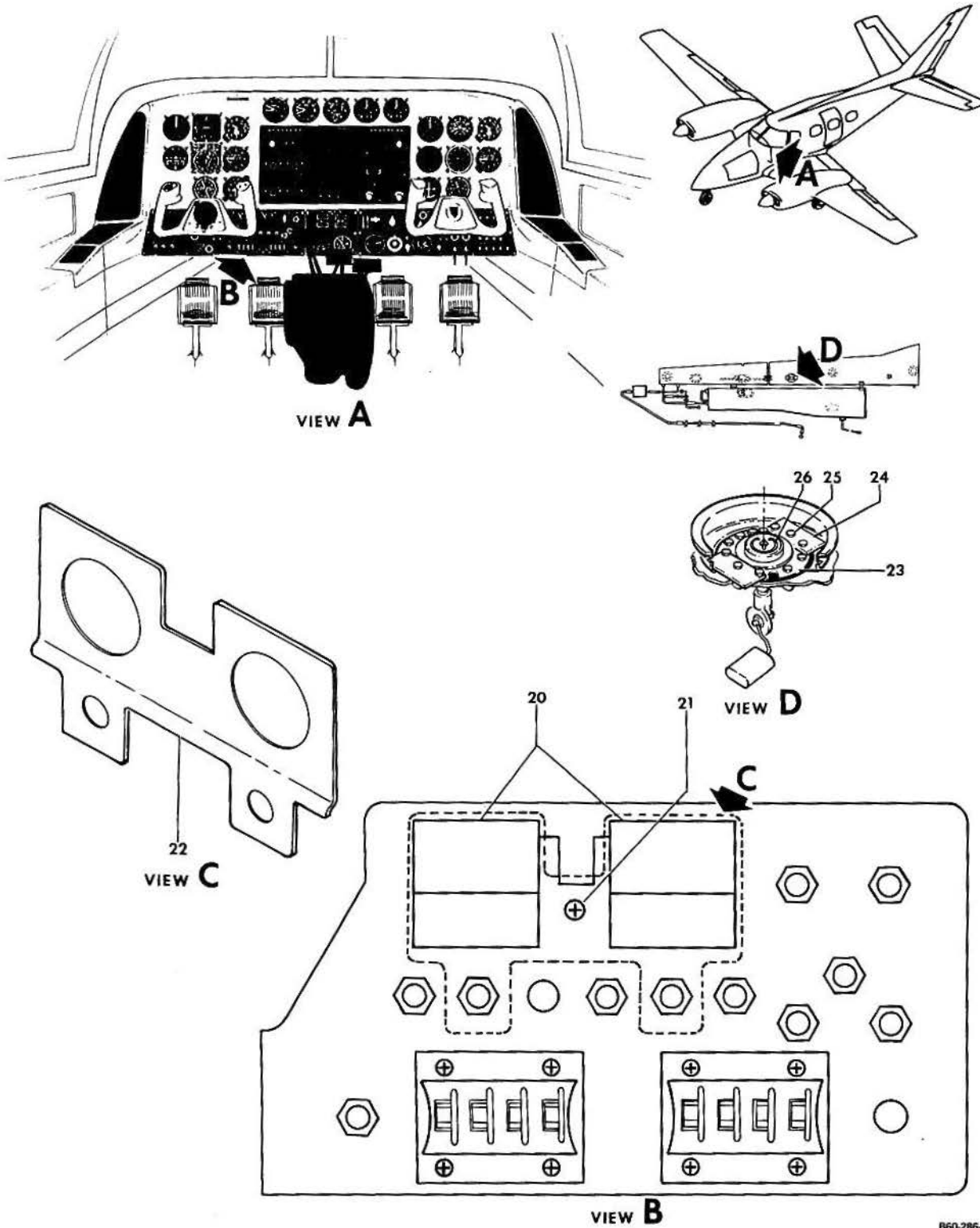


860-286-6

B E E C H C R A F T
DUKE B60
I L L U S T R A T E D P A R T S C A T A L O G

GAMA/ATA CODE & INDEX NO.	PART NO.	DESCRIPTION							UNITS PER ASSY	USABLE ON CODE
		1	2	3	4	5	6	7		
40-02	60-920000-239	FUEL SYSTEM INSTL							NP	1
	60-920002-1	FUEL SYSTEM INSTL/202 GAL CAPACITY/							NP	3
	60-920002-13	FUEL SYSTEM INSTL/202 GAL CAPACITY/							NP	4
	60-920002-3	FUEL SYSTEM INSTL/232 GAL CAPACITY/							NP	3
	60-920002-15	FUEL SYSTEM INSTL/232 GAL CAPACITY/							NP	4
- 1	58-380000-3	. TRANSMITTER,40 GAL CELL/INBOARD/.							2	
- 2	35-921503	. GASKET.							2	
		/ATTACHING PARTS/								
- 3	130909S3	. SCREW							5	
- 4	AN960-10L	. WASHER.							5	
		-----*								
- 5	58-380001-9	. TRANSMITTER,40 GAL CELL/LH-OUTBOARD/.							1	
	58-380001-11	. TRANSMITTER,40 GAL CELL/RH-OUTBOARD/.							1	
- 6	35-921503	. GASKET.							2	
		/ATTACHING PARTS/								
- 7	130909S3	. SCREW							5	
- 8	AN960-10L	. WASHER.							5	
		-----*								
- 9	002-920000-105	. INSULATOR							4	
- 10	002-920020-9	. PLATE ASSY.							2	
- 11	35-921502	. GASKET.							2	
		/ATTACHING PARTS/								
- 12	MS20073-04-03	. BOLT.							6	
- 13	MS20073-04-04	. BOLT.							6	
- 14	AN960-416L	. WASHER.							12	
- 15	MS21266-2N	. GROMMET							1	
		-----*								
- 16	60-389031-9	. TRANSMITTER,LH NACELLE FUEL/202 GAL CAPACITY/							1	
	60-389031-9	. TRANSMITTER,LH NACELLE FUEL/232 GAL CAPACITY/							1	1
	60-389034-1	. TRANSMITTER,LH NACELLE FUEL/232 GAL CAPACITY/							1	2
	60-389031-11	. TRANSMITTER,RH NACELLE FUEL/202 GAL CAPACITY/							1	
	60-389031-11	. TRANSMITTER,RH NACELLE FUEL/232 GAL CAPACITY/							1	1
	60-389034-3	. TRANSMITTER,RH NACELLE FUEL/232 GAL CAPACITY/							1	2
		/ATTACHING PARTS/								
- 17	130909S3	. SCREW							5	
- 18	MS15795-707	. WASHER.							5	
- 19	R 7860	. WASHER, INSULATING							1	
		-----*								

BEECHCRAFT
DUKE B60
ILLUSTRATED PARTS CATALOG



B60-286-5

B E E C H C R A F T
DUKE B60
I L L U S T R A T E D P A R T S C A T A L O G

SUB-SECT UNIT & ITEM NO.	PART NO.	DESCRIPTION							UNITS PER ASSY	USABLE ON CODE
		1	2	3	4	5	6	7		
40-02	60-324025-1	PANEL INSTL, SUB	NP	
	60-324037-3	. SUB-PANEL, LH INBOARD.	1	
- 20	60-384034-5	. . INDICATOR, FUEL QUANTITY/202 GAL CAPACITY/	2	
	60-384034-5	. . INDICATOR, FUEL QUANTITY/232 GAL CAPACITY/	2	1
	60-384078-3	. . INDICATOR, FUEL QUANTITY/232 GAL CAPACITY/	2	2
	R 96-324181	. . CIRCUIT BOARD ASSY.	2	5
	R 60-364066-1	. . CIRCUIT BOARD ASSY.	2	6
	AN936A6	. . WASHER.	2	
	60-324110-1	. . BRACKET ASSY, FUEL INDICATOR MOUNTING.	1	
		/ATTACHING PARTS/								
- 21	AN507B632R7	. . SCREW	1	
	AN936A6	. . WASHER.	1	
	AN340B6	. . NUT	1	

- 22	60-324110-3	. . . BRACKET	1	
	60-324110-5	. . . SPACER.	1	
	60-092029	FUEL SIGHT GAGE INSTL	NP	4
- 23	002-920020-15	. COVER ASSY.	2	4
	35-921502-1	. GASKET.	2	4
- 24	002-920000-197	. INSULATOR	4	4
- 25	130909B14	. BOLT.	4	4
	MS35335-34	. WASHER.	4	4
	R 100951DD064VX	. WASHER.	4	4
	294618	. NUT, RETAINER.	4	4
- 26	002-381002-9	. SIGHT GAGE, LH	1	4
	002-381002-11	. SIGHT GAGE, RH	1	4
		/ATTACHING PARTS/								
	MS35266-64	. SCREW	5	
	AN935-10	. WASHER.	5	

CODES OF EFFECTIVITY

- | | | | |
|---|------------------|---|-----------------|
| 1 | P-247 THRU P-347 | 2 | P-348, |
| | P-349 THRU P-364 | | P-365 AND AFTER |
| 3 | P-348, | 4 | P-402 AND AFTER |
| | P-365 THRU P-401 | | |
| 5 | P-247 THRU P-575 | 6 | P-576 AND AFTER |

