

B E E C H C R A F T  
DUKE B60  
I L L U S T R A T E D P A R T S C A T A L O G

LIST OF PAGES & TABLE OF CONTENTS  
FOR  
CHAPTER 21-00-00 AIR CONDITIONING

CHAP/SUB- SECT & UNIT	PAGE NO.	EFFECTIVE DATE	TABLE OF CONTENTS
21-00-00	1	04/19/84.	. . . . LIST OF PAGES & TABLE OF CONTENTS . . . . .
21-00-00	2	04/16/82	
21-20-01	1	04/19/84.	. . . . PRESSURE DISTRIBUTION DUCTS . . . . .
21-20-01	2	04/19/84	
21-20-01	3	04/19/84	
21-20-10	1	03/20/81.	. . . . RAM AIR AND BLOWER. . . . .
21-20-10	2	03/20/81	
21-20-10	3	01/08/82	
21-20-10	4	03/20/81	
21-20-10	5	03/20/81	
21-20-20	1	03/20/81.	. . . . RECIRCULATING BLOWER. . . . .
21-20-20	2	03/20/81	
21-20-20	3	03/20/81	
21-20-30	1	03/20/81.	. . . . AIR DUCTS . . . . .
21-20-30	2	03/20/81	
21-20-30	3	03/20/81	
21-20-30	4	03/20/81	
21-20-30	5	03/20/81	
21-20-31	1	03/20/81.	. . . . AIR AND LIGHT INSTALLATION. . . . .
21-20-31	2	03/20/81	
21-20-31	3	03/20/81	
21-30-01	1	03/20/81.	. . . . PRESSURIZATION CONTROLS . . . . .
21-30-01	2	03/20/81	P-247 THRU P-307
21-30-01	3	03/20/81	
21-30-01	4	03/20/81	
21-30-01	5	03/20/81	
21-30-02	1	03/20/81.	. . . . PRESSURIZATION CONTROLS . . . . .
21-30-02	2	03/20/81	P-308 AND AFTER
21-30-02	3	04/19/84	
21-30-02	4	03/20/81	
21-30-02	5	01/08/82	
21-30-02	6	03/20/81	
21-30-02	7	01/08/82	
21-30-02	8	03/20/81	
21-30-02	9	01/08/82	
21-30-10	1	03/20/81.	. . . . PRESSURIZATION PLUMBING INSTALLATION. . . . .
21-30-10	2	03/20/81	P-247 THRU P-307
21-30-10	3	03/20/81	
21-40-01	1	03/20/81.	. . . . CABIN HEATER. . . . .
21-40-01	2	01/08/82	
21-40-01	3	01/08/82	
21-40-01	4	03/20/81	
21-40-01	5	04/16/82	
21-40-10	1	03/20/81.	. . . . HEATER FUEL PLUMBING. . . . .
21-40-10	2	03/20/81	
21-40-10	3	04/16/82	
21-50-01	1	03/20/81.	. . . . COMPRESSOR SECTION. . . . .
21-50-01	2	03/20/81	
21-50-01	3	03/20/81	

B E E C H C R A F T  
DUKE B60  
I L L U S T R A T E D P A R T S C A T A L O G

LIST OF PAGES & TABLE OF CONTENTS  
FOR  
CHAPTER 21-00-00 AIR CONDITIONING

SYS/SUB-SYS/ CHAP SECTION	PAGE NO.	EFFECTIVE DATE	TABLE OF CONTENTS
21-50-10	1	03/20/81.	CONDENSER SECTION . . . . .
21-50-10	2	03/20/81	
21-50-10	3	03/20/81	
21-50-10	4	03/20/81	
21-50-10	5	01/08/82	
21-50-20	1	03/20/81.	AIR CONDITIONING WING PLUMBING. . . . .
21-50-20	2	03/20/81	
21-50-20	3	01/08/82	
21-50-30	1	03/20/81.	AIR CONDITIONING FUSELAGE PLUMBING. . . . .
21-50-30	2	03/20/81	
21-50-30	3	03/20/81	
21-50-40	1	03/20/81.	EVAPORATOR SECTION. . . . .
21-50-40	2	03/20/81	
21-50-40	3	03/20/81	
21-50-50	1	03/20/81.	AIR CONDITIONER ELECTRICAL. . . . .
21-50-50	2	03/20/81	
21-50-50	3	01/08/82	
21-50-60	1	03/20/81.	CONDENSER BLOWER. . . . .
21-50-60	2	03/20/81	
21-50-60	3	03/20/81	
21-60-01	1	03/20/81.	CABIN AIR TEMPERATURE CONTROL . . . . .
21-60-01	2	03/20/81	
21-60-01	3	03/20/81	
21-60-01	4	03/20/81	
21-60-01	5	03/20/81	
21-60-01	6	03/20/81	
21-60-01	7	04/16/82	

BEECHCRAFT  
DUKE B60  
ILLUSTRATED PARTS CATALOG

21-20-01  
PRESSURE DISTRIBUTION DUCTS

BEECHCRAFT  
DUKE B60  
ILLUSTRATED PARTS CATALOG

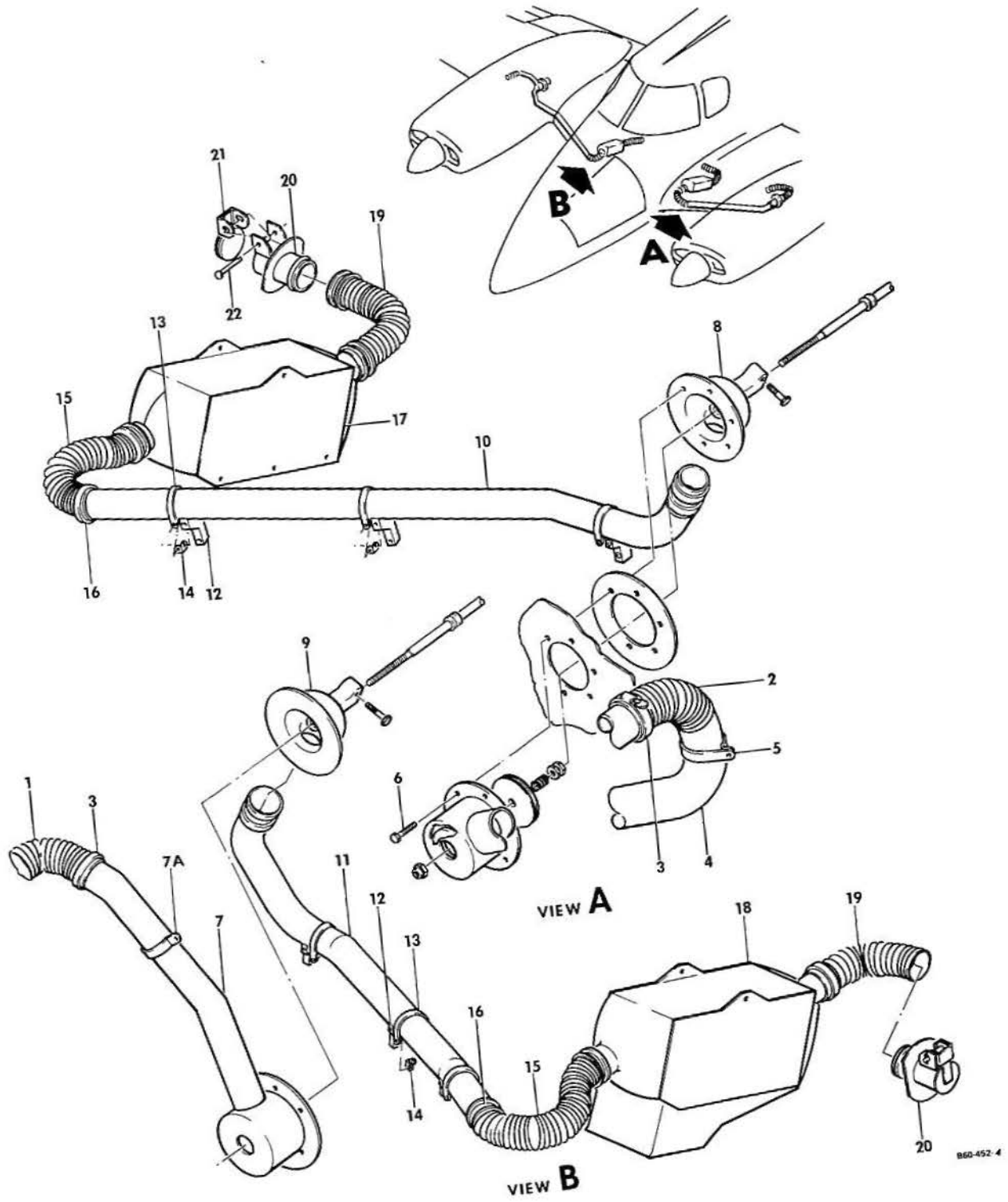


FIGURE 20-01. PRESSURE DISTRIBUTION DUCTS

REVISED  
04/19/84

B E E C H C R A F T  
DUKE B60  
I L L U S T R A T E D P A R T S C A T A L O G

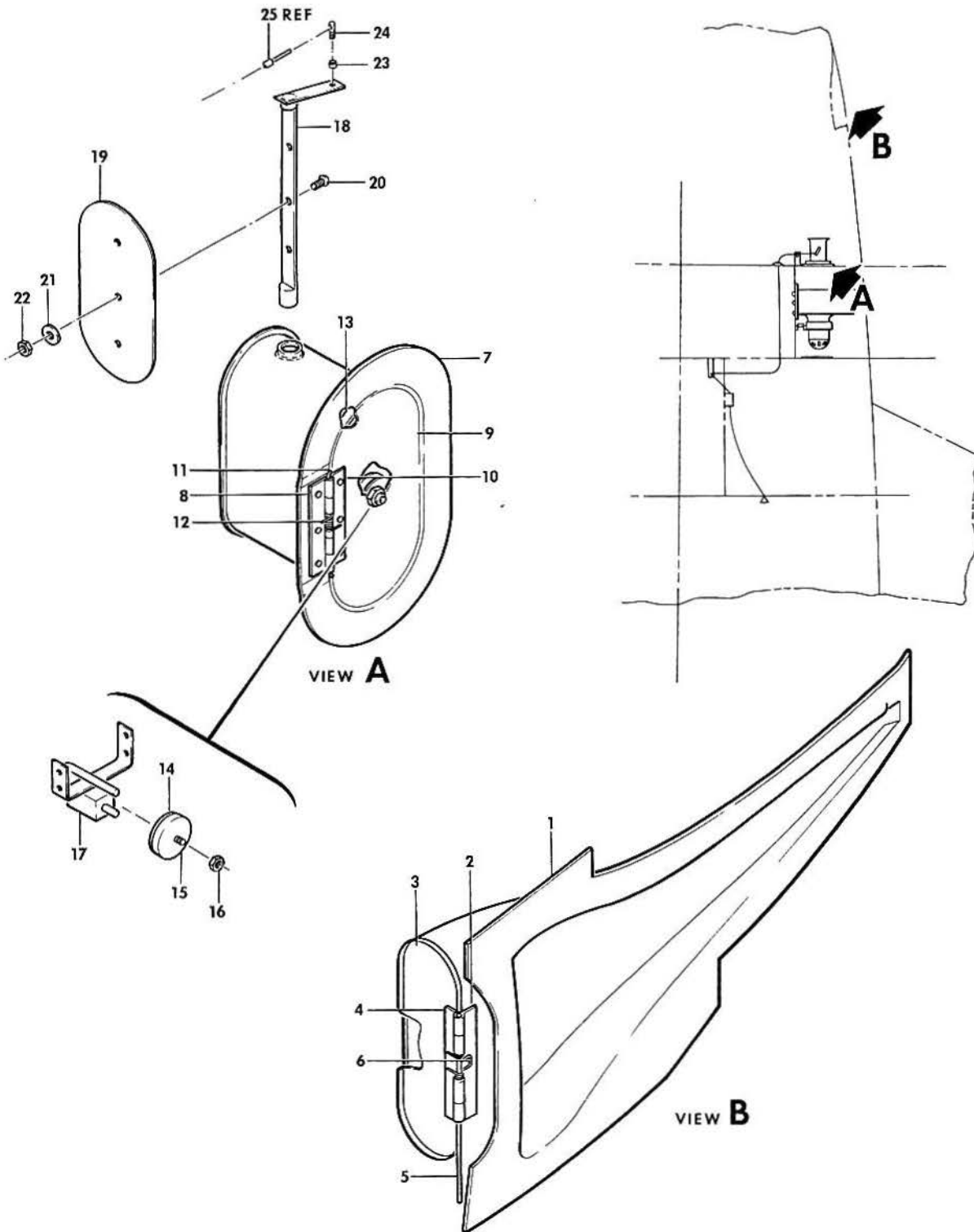
SUB-SECT UNIT & ITEM NO.	PART NO.	DESCRIPTION							UNITS PER ASSY	USABLE ON CODE
		1	2	3	4	5	6	7		
20-01	60-540011	VALVE INSTL,CABIN PRESSURE FIREWALL . . . . .							NP	
- 1	115167DXX80484	. DUCT,RH FLEX. . . . .							1	
- 2	115167DXX80404	. DUCT,LH FLEX. . . . .							1	
		/ATTACHING PARTS/								
- 3	AN737TW74-91	. CLAMP . . . . .							4	
		-----*								
- 4	60-540011-41	. DUCT ASSY,LH. . . . .							1	
		/ATTACHING PARTS/								
- 5	AN742-32	. CLAMP . . . . .							1	
	AN520R10-6	. SCREW . . . . .							1	
	AN960D10L	. WASHER. . . . .							1	
	130909N29	. NUT . . . . .							1	
- 6	130909B14	. BOLT. . . . .							10	
		-----*								
- 7	60-540011-43	. DUCT ASSY,RH. . . . .							1	
		/ATTACHING PARTS/								
- 7A	AN750-32	. CLAMP . . . . .							1	
	AN520-8R6	. SCREW . . . . .							2	
	AN960-8	. WASHER. . . . .							2	
		-----*								
NOTE FOR BREAKDOWN OF 60-540011-41 AND -43 DUCT ASSEMBLY,SEE CHAPTER 21-30-01										
	60-540011-49	. GASKET,LH AND RH DUCT ASSY. . . . .							2	
- 8	60-540012-9	. HOUSING,LH FIREWALL VALVE . . . . .							1	
- 9	60-540012-5	. HOUSING,RH FIREWALL VALVE . . . . .							1	
	60-540011-53	. GASKET,FIREWALL VALVE HOUSING . . . . .							2	
	R 60-540014	DUCT INSTL,PRESSURIZATION WING & FUSELAGE . . . . .							NP	
- 10	60-540014-3	. DUCT,LH . . . . .							1	
- 11	60-540014-5	. DUCT,RH. . . . .							1	
- 12	60-540018	. SUPPORT,LH AND RH DUCT. . . . .							6	
		/ATTACHING PARTS/								
	AN515-8R26	. SCREW LH AND RH . . . . .							6	
	AN515-8R14	. SCREW LH AND RH . . . . .							6	
		-----*								
- 13	R AN742D24	. CLAMP,LH AND RH . . . . .							6	
		/ATTACHING PARTS/								
- 14	AN743-12	. BRACKET . . . . .							6	
	MS35207-264	. SCREW,LH AND RH . . . . .							6	
	AN520-10R16	. SCREW,LH AND RH . . . . .							6	
	AN960-10L	. WASHER,LH AND RH. . . . .							6	
	130909N29	. NUT,LH AND RH . . . . .							6	
		-----*								
- 15	R 115167CXX060525	. DUCT LH AND RH FLEX . . . . .							2	
- 16	NAS397-28	. CLAMP,LH AND RH FLEX DUCT . . . . .							4	
- 17	60-540021-1	. EXCHANGER,LH HEAT . . . . .							1	
- 18	60-540021-2	. EXCHANGER,RH HEAT . . . . .							1	
- 19	R 115167CXX060295	. DUCT,LH AND RH. . . . .							4	
	60-540019-1	. VALVE INSTL,LH PRESSURIZATION CHECK . . . . .							NP	
	60-540019-2	. VALVE INSTL,RH PRESSURIZATION . . . . .							NP	
- 20	60-540019-19	. DUCT ASSY,LH AND RH . . . . .							1	
- 21	60-540019-5	. DOOR ASSY,LH AND RH . . . . .							1	
- 22	MS20392-2C39	. PIN . . . . .							1	
	MS24665-134	. PIN,COTTER LH AND RH . . . . .							1	



B E E C H C R A F T  
DUKE B60  
I L L U S T R A T E D P A R T S C A T A L O G

21-20-10  
RAM AIR AND BLOWER

BEECHCRAFT  
DUKE B60  
ILLUSTRATED PARTS CATALOG



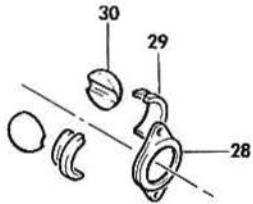
B60-414-4



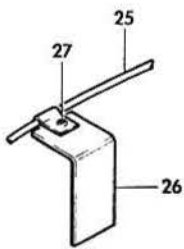
BEECHCRAFT  
DUKE 860  
ILLUSTRATED PARTS CATALOG

GAMA/ATA CODE & INDEX NO.	PART NO.	DESCRIPTION							UNITS PER ASSY	USABLE ON CODE	
		1	2	3	4	5	6	7			
20-10	60-410019	DUCT ASSY,AIR INLET . . . . .								1	
- 1	60-410019-1	. DUCT, RAM AIR. . . . .								1	
- 2	60-410019-7	. HINGE, HALF. . . . .								1	
		/ATTACHING PARTS/									
	MS35206-227	. SCREW . . . . .								3	
	AN960-6	. WASHER. . . . .								6	
	MS21042-06	. NUT . . . . .								3	
		-----*									
- 3	60-410019-3	. DOOR. . . . .								1	
- 4	60-410019-5	. HINGE, HALF. . . . .								1	
- 5	60-410019-9	. PIN HINGE . . . . .								1	
- 6	60-410042-1	. SPRING, HINGE. . . . .								1	
	60-550020	VALVE ASSY,CHECK AND RAM AIR. . . . .								NP	
	60-550020-55	. VALVE ASSY. . . . .								1	
		/ATTACHING PARTS/									
	MS35207-263	. SCREW . . . . .								12	
		-----*									
- 7	60-550020-53	. HOUSING ASSY, RAM AIR. . . . .								1	
	60-550020-51	. WELD ASSY . . . . .								1	
- 8	60-550020-27	. HINGE, HALF. . . . .								1	
	60-550020-43	. DOOR ASSY,CHECK VALVE . . . . .								1	
- 9	60-550020-47	. DOOR,CHECK VALVE. . . . .								1	
- 10	60-550020-29	. HINGE, HALF. . . . .								1	
- 11	60-550020-31	. PIN HINGE . . . . .								1	
- 12	S140	. SPRING, HINGE. . . . .								1	
- 13	60-550020-7	. SEAL,CHECK VALVE DOOR . . . . .								1	
- 14	60-550020-13	. PLATE ASSY,MAGNETIC CONTACT . . . . .								1	
- 15	60-550020-45	. PAD, PLATE ASSY. . . . .								1	
		/ATTACHING PARTS/									
- 16	I30909N29	. NUT . . . . .								1	
	AN960-10	. WASHER. . . . .								1	
		-----*									
- 17	60-550021-7	. LATCH ASSY. . . . .								1	
		/ATTACHING PARTS/									
	MS35206-246	. SCREW . . . . .								4	
	AN960-8	. WASHER. . . . .								4	
	I30290-3	. NUT, CLIP. . . . .								4	
		-----*									
- 18	60-550020-17	. SHAFT ASSY, . . . . .								1	
- 19	60-550020-23	. FLAPPER, RAM AIR VALVE . . . . .								1	
		/ATTACHING PARTS/									
- 20	MS35206-246	. SCREW . . . . .								3	
- 21	AN960-8	. WASHER. . . . .								3	
- 22	I30909N28	. NUT . . . . .								3	
		-----*									
- 23	10080104-0093	. SPACER, PIN. . . . .								1	
- 24	35-550520	. PIN,CABLE RETAINING . . . . .								1	
		/ATTACHING PARTS/									
	AN960-10	. WASHER. . . . .								1	
	I30909N29	. NUT . . . . .								1	
		-----*									

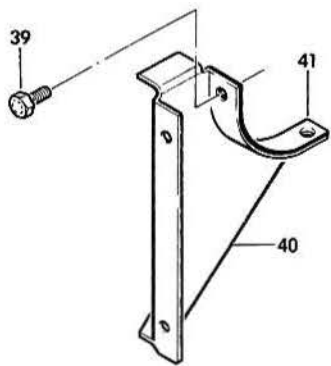
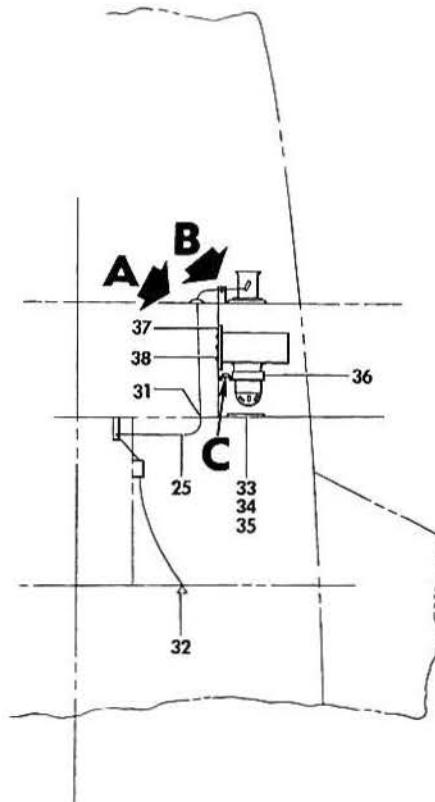
BEECHCRAFT  
DUKE B60  
ILLUSTRATED PARTS CATALOG



VIEW A



VIEW B



VIEW C

860-414-5

B E E C H R A F T  
DUKE 860  
I L L U S T R A T E D P A R T S C A T A L O G

GAMA/ATA CODE & INDEX NO.	PART NO.	DESCRIPTION	UNITS PER ASSY	USABLE ON CODE
		1 2 3 4 5 6 7		
20-10	60-550022	VALVE CONTROL INSTL, RAM AIR . . . . .	NP	
- 25	60-384026-5	. CONTROL ASSY. . . . .	1	
		/ATTACHING PARTS/		
	MS21919DG3	. CLAMP . . . . .	2	
	MS35206-244	. SCREW . . . . .	2	
	NAS43DD3-32	. SPACER . . . . .	1	
	AN960-8L	. WASHER . . . . .	2	
	130909N28	. NUT . . . . .	2	
- 26	60-550022-3	. CLAMP, CONTROL ASSY. . . . .	1	
		/ATTACHING PARTS/		
- 27	AN520-10-10	. SCREW . . . . .	1	
	130909N29	. NUT . . . . .	1	
- 28	112433-6	. RETAINER, FIREWALL GROMMET . . . . .	1	
- 29	112412	. GROMMET . . . . .	2	
- 30	112413-2	. BALL, HALF . . . . .	2	
- 31	MS35490-6	. GROMMET . . . . .	1	
- 32	60-550076-3	. KNOB ASSY . . . . .	1	
	AN565A1032H4	. SCREW, SET . . . . .	1	
	60-550015	BLOWER AND VENT INSTL, ENVIRONMENTAL . . . . .	NP	
- 33	60-550015-5	. VALVE ASSY, CHECK . . . . .	1	
- 34	60-550015-3	. VALVE, CHECK . . . . .	1	
- 35	60-550015-1	. DOUBLER, CHECK VALVE . . . . .	1	
- 36	60-550015-9	. DOUBLER, CHECK VALVE . . . . .	1	
- 36	60-384002-5	. BLOWER ASSY/SEE CHAPTER 21-20-20/ . . . . .	1	1
	101-384135-1	. BLOWER ASSY/SEE CHAPTER 21-20-20/ . . . . .	1	2
- 37	60-550015-15	. GASKET, BLOWER . . . . .	1	
		/ATTACHING PARTS/		
- 38	MS35207-263	. SCREW . . . . .	7	
- 39	MS20073-03-02	. BOLT, BLOWER ATTACHING . . . . .	2	
- 40	60-550015-13	. BRACKET ASSY. . . . .	1	
- 41	60-550015-7	. BRACKET . . . . .	1	
	60-550015-11	. INSULATOR, BLOWER. . . . .	1	

CODES OF EFFECTIVITY

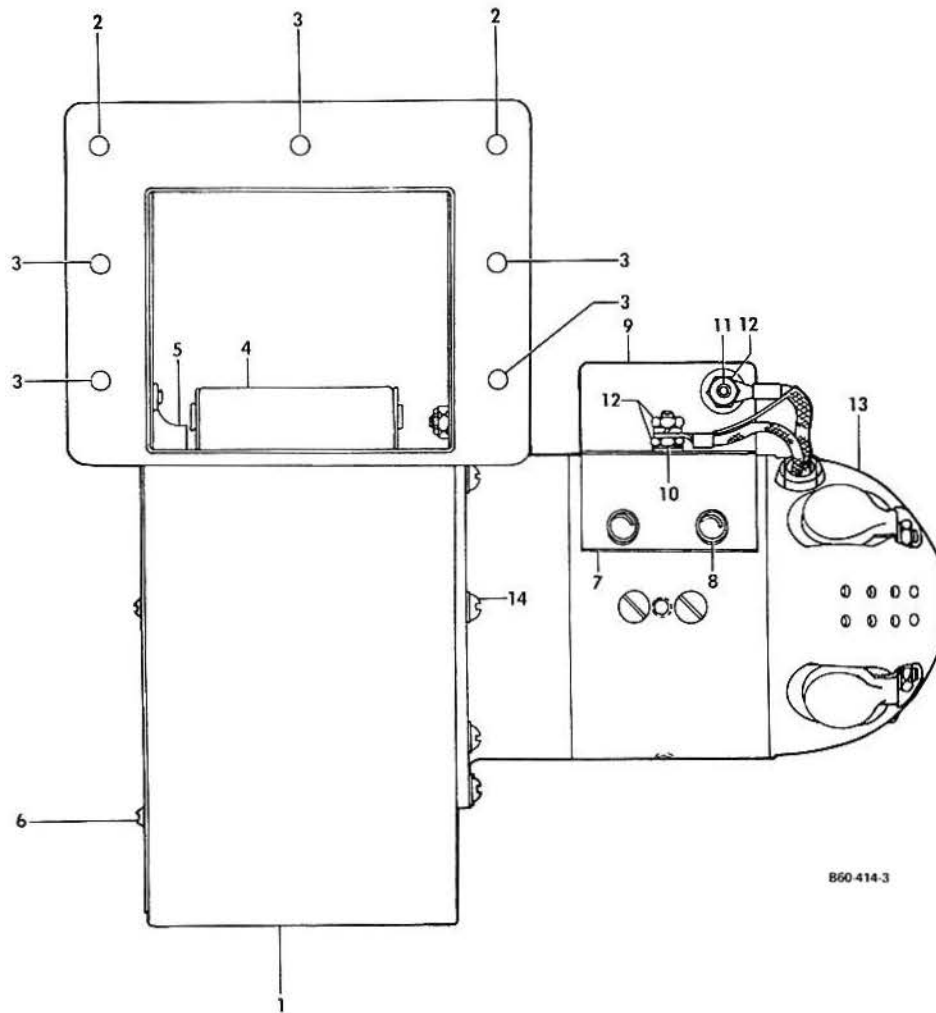
1 P-247 THRU P-536      2 P-537 AND AFTER



BEECHCRAFT  
DUKE B60  
ILLUSTRATED PARTS CATALOG

21-20-20  
RECIRCULATING BLOWER

BEECHCRAFT  
DUKE B60  
ILLUSTRATED PARTS CATALOG



B60-414-3

B E E C H C R A F T  
DUKE B60  
I L L U S T R A T E D P A R T S C A T A L O G

GAMA/ATA CODE & INDEX NO.	PART NO.	DESCRIPTION	1 2 3 4 5 6 7							UNITS PER ASSY	USABLE ON CODE
			1	2	3	4	5	6	7		
20-20	60-384002-5	BLOWER ASSY . . . . .								1	1
	101-384135-1	BLOWER ASSY/ELECTRO-MECH/								1	2
- 1	A2781-518	. HOUSING ASSY,BLOWER . . . . .								1	1
- 2	NAS1027C3W	. NUTPLATE . . . . .								2	1
- 3	NAS1023C3W	. NUTPLATE . . . . .								5	1
- 4	4041-3	. IMPELLER ASSY,BLOWER . . . . .								1	1
- 5	4039-3	. ADAPTER,INLET . . . . .								1	1
		/ATTACHING PARTS/									
- 6	AN515-4-6	. SCREW . . . . .								6	
	AN960-4	. WASHER . . . . .								6	
		*-----*									
- 7	2613-13	. SUPPORT, FILTER MOUNTING . . . . .								1	1
		/ATTACHING PARTS/									
- 8	K704G2	. SCREW . . . . .								4	
	AN960-8	. WASHER . . . . .								4	
		*-----*									
- 9	2793-27	. FILTER,RADIO INTERFERENCE . . . . .								1	1
- 10	K395-10	. LUG,TERMINAL . . . . .								1	1
- 11	K393-1	. LUG,TERMINAL . . . . .								1	1
		/ATTACHING PARTS/									
- 12	MS35649-282	. NUT . . . . .								2	
	AN935-8L	. WASHER . . . . .								2	
	AN960-8	. WASHER . . . . .								2	
		*-----*									
- 13	M3524A	. MOTOR,DIRECT CURRENT . . . . .								1	1
		/ATTACHING PARTS/									
- 14	AN515-8-7	. SCREW . . . . .								8	
	AN960-8	. WASHER . . . . .								8	
		*-----*									
	2239-86	. STATOR ASSY . . . . .								1	1
	4112-2	. ARMATURE . . . . .								1	1
	K271-200SSEL	. BEARING,SHAFT CARRIER . . . . .								2	1
	35-2-1004	. BEARING . . . . .								AR	2
	35-2-1005	. BEARING . . . . .								AR	2
	420A20	. BRUSH . . . . .								4	1
	35-2-3001	. BRUSH . . . . .								4	2
	35-2-3005	. SPRING . . . . .								4	2

CODES OF EFFECTIVITY

1 P-247 THRU P-536      2 P-537 AND AFTER

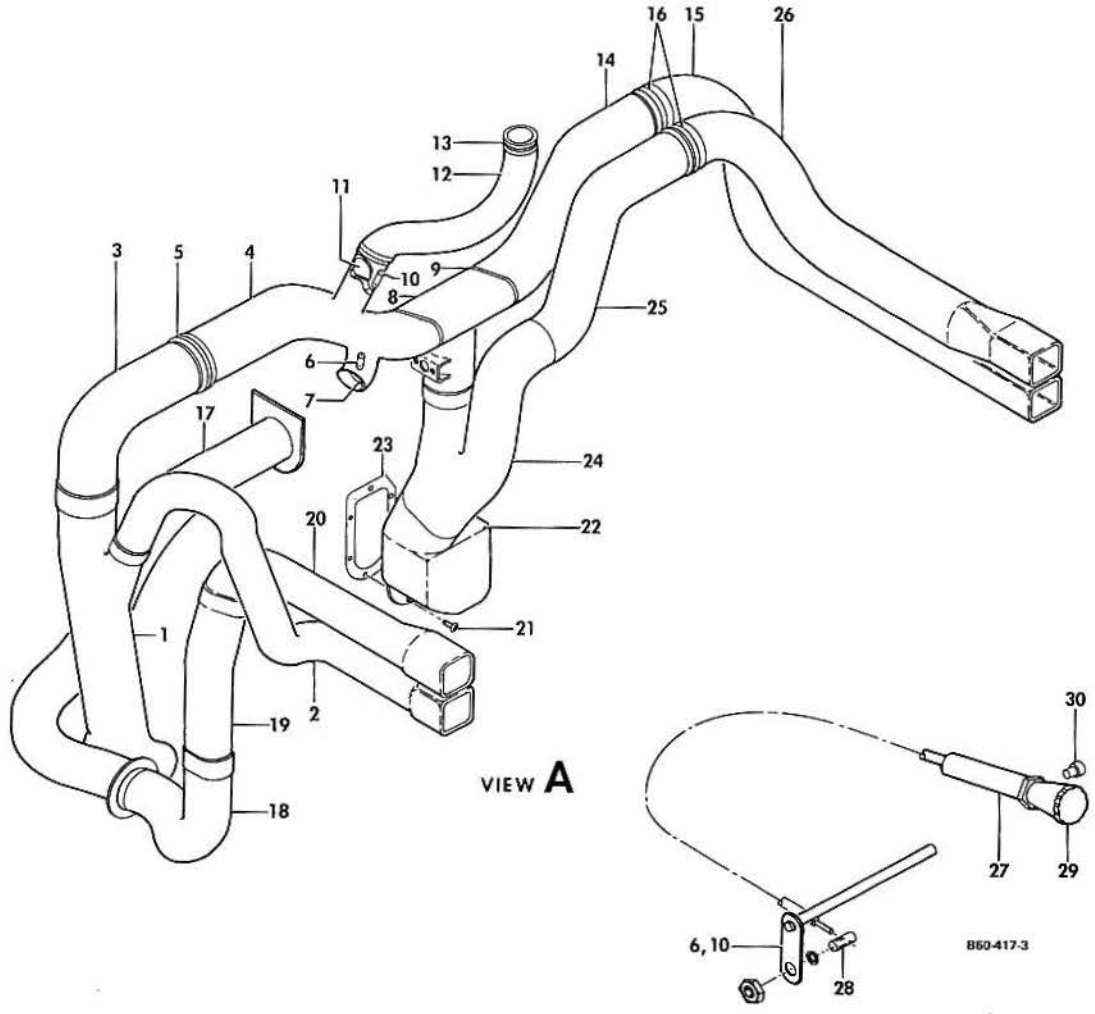
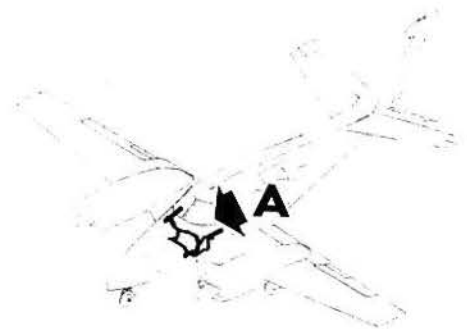




BEECHCRAFT  
DUKE 860  
ILLUSTRATED PARTS CATALOG

21-20-30  
AIR DUCTS

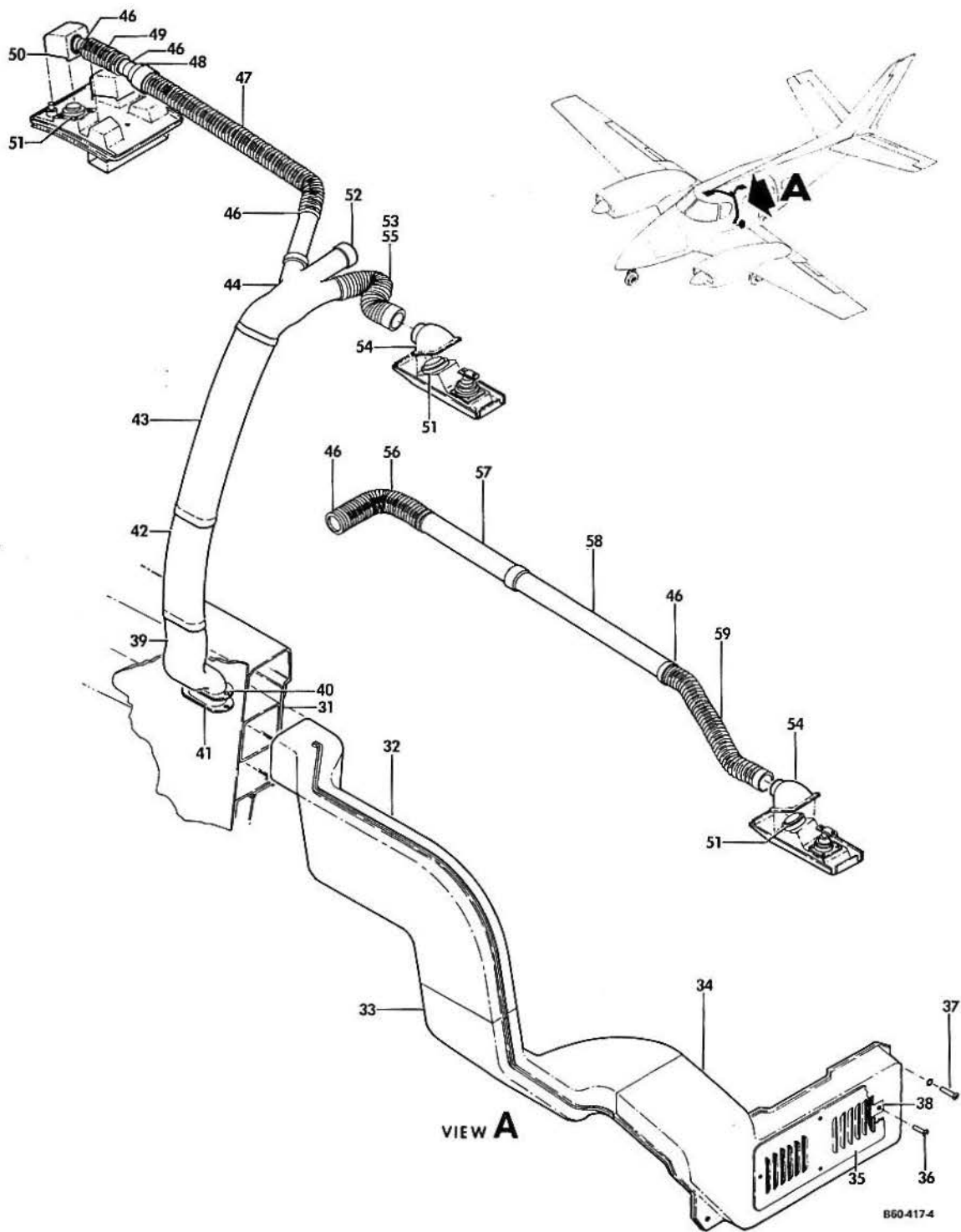
BEECHCRAFT  
DUKE B60  
ILLUSTRATED PARTS CATALOG



B E E C H C R A F T  
DUKE B60  
I L L U S T R A T E D P A R T S C A T A L O G

GAMA/ATA CODE & INDEX NO.	PART NO.	DESCRIPTION	UNITS PER ASSY	USABLE ON CODE
		1 2 3 4 5 6 7		
20-30	60-550000-3	HEAT AND VENT INSTL . . . . .	NP	
	60-550017-9	. . DUCT INSTL,HEAT AND VENT. . . . .	NP	
- 1	60-550055	. . DUCT,ADAPTER/HEAT/. . . . .	1	
- 2	60-550062	. . DUCT,LH HEAT/STA 105 TO 119/. . . . .	1	
- 3	60-550056	. . DUCT,LH HEAT/STA 100/. . . . .	1	
- 4	60-550050	. . DUCT ASSY,HEAT AND DEFROST. . . . .	1	
		/ATTACHING PARTS/		
- 5	MS21919DG48	. . CLAMP,HEAT AND DEFROST DUCT ASSY. . . . .	1	
		-----*		
- 6	60-550054	. . ARM ASSY,DAMPER/PILOTS HEAT/. . . . .	1	
	60-550054-3	. . ARM ASSY,DAMPER/COPILOTS HEAT/. . . . .	1	
- 7	60-550052	. . DAMPER,PILOTS AND COPILOTS HEAT . . . . .	2	
		/ATTACHING PARTS/		
	NAS1191-06P6L	. . SCREW . . . . .	2	
		-----*		
- 8	60-550081	. . DUCT,HEAT . . . . .	1	
		/ATTACHING PARTS/		
- 9	60-550017-7	. . CLAMP . . . . .	2	
		-----*		
- 10	60-550053	. . ARM ASSY,DAMPER/DEFROSTER/. . . . .	1	
- 11	60-550051	. . DAMPER,DEFROSTER. . . . .	1	
		/ATTACHING PARTS/		
	NAS1191-06P6L	. . SCREW . . . . .	2	
		-----*		
- 12	111728-6D6-36	. . DUCT,DEFROSTER. . . . .	1	
		/ATTACHING PARTS/		
- 13	AN737TW74-91	. . CLAMP . . . . .	2	
		-----*		
- 14	60-550059	. . DUCT ASSY,RH HEAT/STA 100/. . . . .	1	
- 15	60-550060	. . DUCT,RH HEAT/STA 100 TO 119/. . . . .	1	
		/ATTACHING PARTS/		
- 16	MS21919DG640	. . CLAMP . . . . .	2	
		-----*		
- 17	60-550019	. . DUCT ASSY,LH VENT AIR . . . . .	1	
- 18	60-550047	. . DUCT,LH VENT AIR/STA 100/ . . . . .	1	
- 19	60-550048	. . DUCT,LH VENT AIR/STA 107/ . . . . .	1	
- 20	60-550049	. . DUCT,LH VENT AIR/STA 107 TO 119/. . . . .	1	6
	60-550049-3	. . DUCT,LH VENT AIR/STA 107 TO 119/. . . . .	1	7
	60-550085-1	. . HOUSING ASSY. . . . .	1	
		/ATTACHING PARTS/		
- 21	NAS221-9	. . SCREW . . . . .	4	
	AN960-10	. . WASHER. . . . .	4	
	NAS221-10	. . SCREW . . . . .	2	
	NAS1598D3Y	. . WASHER,SEAL . . . . .	2	
		-----*		
- 22	60-550085-3	. . HOUSING . . . . .	1	
	NAS960-1216L	. . WASHER. . . . .	1	
	NAS451-17	. . PLUG BUTTON . . . . .	1	
- 23	60-550066	. . GASKET,DUCT ASSY. . . . .	1	
- 24	60-550058-3	. . DUCT,RH VENT AIR. . . . .	1	
- 25	60-550063	. . DUCT,RH VENT AIR/STA 105/ . . . . .	1	
- 26	60-550061	. . DUCT,RH VENT AIR/STA 100 TO 119/. . . . .	1	6
	60-550061-3	. . DUCT,RH VENT AIR/STA 101 TO 119/. . . . .	1	7
	115167A-XX061043	. . DUCT,PILOT & COPILOT AIR. . . . .	2	7
	60-530357-9	. . PLENUM ASSY,PILOT & COPILOT AIR . . . . .	2	7
- 27	60-384026-1	. . CONTROL,PILOT AND COPILOT HEAT AND DEFROST. . . . .	3	
- 28	35-550520	. . PIN . . . . .	3	
		/ATTACHING PARTS/		
	100801D4-0093	. . SPACER. . . . .	3	
	AN960-10	. . WASHER. . . . .	6	
	130909N29	. . NUT . . . . .	3	
		-----*		
- 29	60-550076-603	. . KNOB ASSY,CONTROL . . . . .	3	
- 30	AN565A1032H4	. . SCREW,SET . . . . .	3	

BEECHCRAFT  
DUKE B60  
ILLUSTRATED PARTS CATALOG



B E E C H C R A F T  
DUKE B60  
I L L U S T R A T E D P A R T S C A T A L O G

GAMA/ATA CODE & INDEX NO.	PART NO.	1 2 3 4 5 6 7	DESCRIPTION	UNITS PER ASSY	USABLE ON CODE
20-30 - 31	60-530280-3	. . .	CONSOLE ASSY/SEE CHAPTER 25/	1	
- 32	60-550086-2	. . .	DUCT,LH HEAT.	1	3
	60-550086-1	. . .	DUCT,RH HEAT.	1	3
	60-550091-1	. . .	DUCT,LH HEAT.	1	4
	60-550091-2	. . .	DUCT,RH HEAT.	1	4
- 33	60-550087-2	. . .	DUCT,LH HEAT.	1	
	60-550087-1	. . .	DUCT,RH HEAT.	1	
- 34	60-550088-2	. . .	DUCT,LH HEAT.	1	
	60-550088-1	. . .	DUCT,RH HEAT.	1	
- 35	60-550089	. . .	COVER, LOUVERED. /ATTACHING PARTS/	2	
- 36	MS24621-32	. . .	SCREW	4	
- 37	NAS603-10	. . .	SCREW	2	
	NAS620-10	. . .	WASHER	2	
- 38	NAS395-17-1	. . .	NUT, SPRING.	4	
- 39	60-550068	. . .	DUCT,LH AND RH VENT AIR ADAPTER/STA 155/	2	1
	60-550068-3	. . .	DUCT,LH AND RH VENT AIR ADAPTER/STA 155/	2	5
	60-550092-1	. . .	DUCT,LH VENT AIR ADAPTER/STA 155/	1	4
	60-550092-2	. . .	DUCT,RH VENT AIR ADAPTER/STA 155/	1	4
- 40	130909814	. . .	BOLT /ATTACHING PARTS/	4	
- 41	60-550072	. . .	GASKET, ADAPTER.	2	
- 42	60-550070	. . .	DUCT,LH AND RH VENT AIR/STA 155/	2	1
	60-550070-5	. . .	DUCT,LH AND RH VENT AIR/STA 155/	2	2
	60-550090-3	. . .	DUCT,LH VENT AIR.	1	2
	60-550090-4	. . .	DUCT,RH VENT AIR.	1	2
- 43	60-550069	. . .	DUCT,LH AND RH VENT AIR/STA 155/	2	1
	60-550069-5	. . .	DUCT,LH & RH VENT AIR/STA 155/	2	5
	60-550069-7	. . .	DUCT,LH & RH VENT AIR/STA 155/	2	4
- 44	60-550071-1	. . .	DUCT,LH AND RH VENT AIR FEEDER/STA 155/	2	1
	60-550071-3	. . .	DUCT,LH AND RH VENT AIR FEEDER/STA 155/	2	2
	60-530181	. . .	AIR DUCT INSTALLATION	NP	
- 45		. . .	DELETED		
- 46	AN737TW58	. . .	CLAMP	12	
- 47	50-384061-31	. . .	FLEXDUCT, PILOT AND COPILOT VENT AIR	6	
- 48	60-530181-45	. . .	TUBE, PILOT AND COPILOT VENT AIR	2	
- 49	60-384054	. . .	FLEXDUCT, PILOT AND COPILOT VENT AIR	2	
- 50	60-530189-125	. . .	PLENUM ASSY, PILOT AND COPILOT VENT AIR.	2	
- 51	2368-503	. . .	VALVE, VENT AIR.	6	
- 52	474	. . .	TAPE/TO CLOSE OPTIONAL OUTLET/	AR	
- 53	50-384061-31	. . .	FLEXDUCT/3RD AND 4TH SEAT STANDARD INSTL/	6	
- 54	60-530182-7	. . .	PLENUM ASSY	4	
- 55	60-384061-17	. . .	FLEXDUCT/3RD AND 4TH SEAT CLUB ARRANGEMENT/	2	
- 56	50-384061-13	. . .	FLEXDUCT/5TH AND 6TH SEAT VENT AIR, OPTIONAL/	2	
- 57	60-550079-3	. . .	DUCT/5TH AND 6TH SEAT VENT AIR, OPTIONAL/	2	
- 58	60-550080	. . .	DUCT/5TH AND 6TH SEAT VENT AIR, OPTIONAL/	2	
- 59	50-384061-31	. . .	FLEXDUCT/5TH AND 6TH SEAT VENT AIR, OPTIONAL/	6	

CODES OF EFFECTIVITY

1	P-247 THRU P-310	2	P-311 AND AFTER
3	P-247 THRU &-445	4	P-446 AND AFTER
5	P-311 THRU P-445	6	P-247 THRU P-555
7	P-556 AND AFTER		

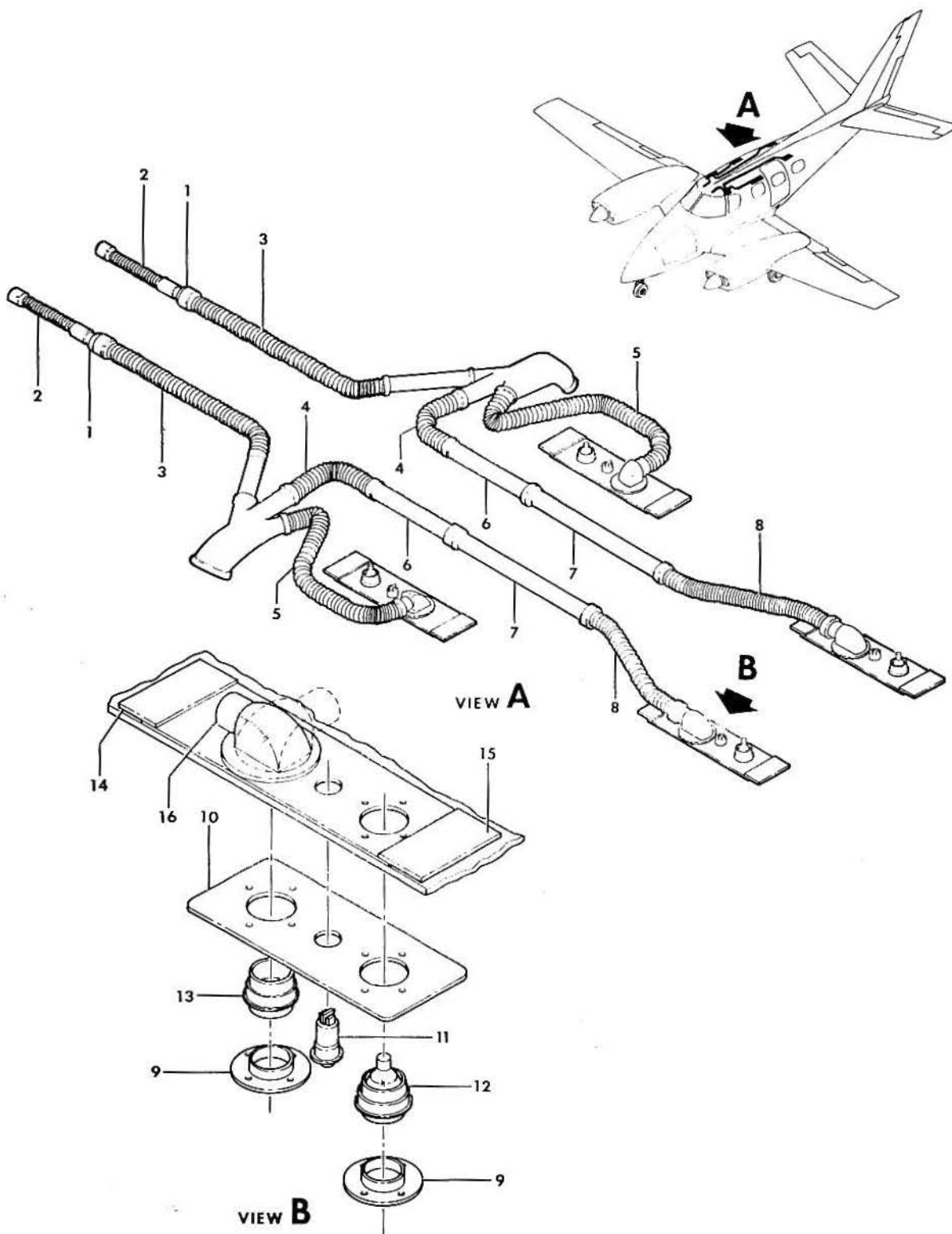
\*END\*



BEECHCRAFT  
DUKE B60  
ILLUSTRATED PARTS CATALOG

21-20-31  
AIR AND LIGHT INSTALLATION

BEECHCRAFT  
DUKE B60  
ILLUSTRATED PARTS CATALOG



860-417-8



B E E C H C R A F T  
DUKE 860  
I L L U S T R A T E D P A R T S C A T A L O G

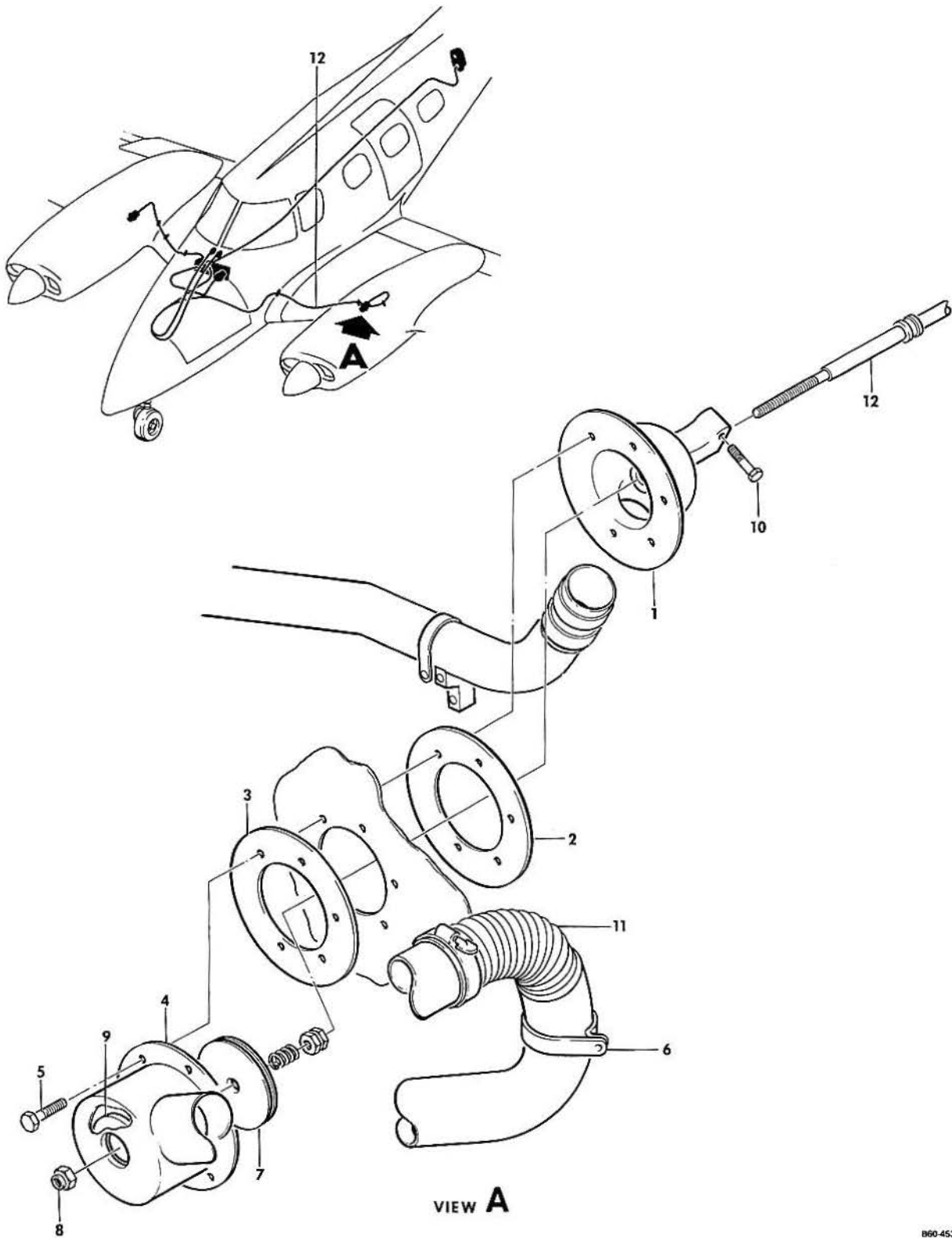
GAMA/ATA CODE & INDEX NO.	PART NO.	1 2 3 4 5 6 7	DESCRIPTION	UNITS PER ASSY	USABLE ON CODE
20-31	60-530181-17		AIR AND LIGHT INSTL/STD 4 PLACE SEATING/ . . . . .	NP	
	60-530181-47		AIR AND LIGHT INSTL/OPT 6 PLACE SEATING/ . . . . .	NP	
	60-530181-49		AIR AND LIGHT INSTL/6 PLACE CLUB SEATING/ . . . . . /WITH OR W/O TABLE/	NP	
- 1	60-530181-45		. TUBE,AIR VENT/FLT COMPT/ . . . . .	2	
- 2	60-384054		. DUCT,FLEX . . . . .	2	
- 3	50-384061-31		. DUCT,FLEX . . . . .	2	
- 4	50-384061-13		. DUCT,FLEX . . . . .	2	
- 5	50-384061-17		. DUCT,FLEX/USED FOR CLUB SEATING/ . . . . .	2	
	50-384061-31		. DUCT,FLEX/USED FOR STD SEATING/ . . . . .	2	
- 6	60-550079-3		. DUCT/USED FOR 6 PLACE OR CLUB SEATING/ . . . . .	2	
- 7	60-550080		. DUCT/USED FOR 6 PLACE OR CLUB SEATING/ . . . . .	2	
- 8	50-384061-31		. DUCT,FLEX/USED FOR 6 PLACE OR CLUB SEATING/ . . . . .	2	
	AN737TW58		. CLAMP,DUCT INSTL. . . . .	AR	
- 9	7194-1		. PLATE,COVER . . . . . /ATTACHING PARTS/	AR	
	MS24693S51		. SCREW . . . . .	4	
- 10	60-530183-1		. PLATE,FACE . . . . .	AR	
- 11	L18366-3		. SWITCH/ALTERNATE FOR J20125-03/ . . . . .	AR	
	J20125-03		. SWITCH/ALTERNATE FOR L18366-3/ . . . . .	AR	
- 12	2195-501N		. LIGHT ASSY/SEE 33-20-01 FOR BREAKDOWN/ . . . . .	AR	
- 13	2368-503		. VALVE ASSY,AIR. . . . .	AR	
- 14	60-530181-29		. SUPPORT . . . . .	AR	
- 15	60-530181-31		. SUPPORT . . . . .	AR	
- 16	60-530182-7		. ASSY,PLENUM . . . . .	AR	



B E E C H C R A F T  
DUKE B60  
I L L U S T R A T E D P A R T S C A T A L O G

21-30-01  
PRESSURIZATION CONTROLS  
P-247 THRU P-307

BEECHCRAFT  
DUKE B60  
ILLUSTRATED PARTS CATALOG

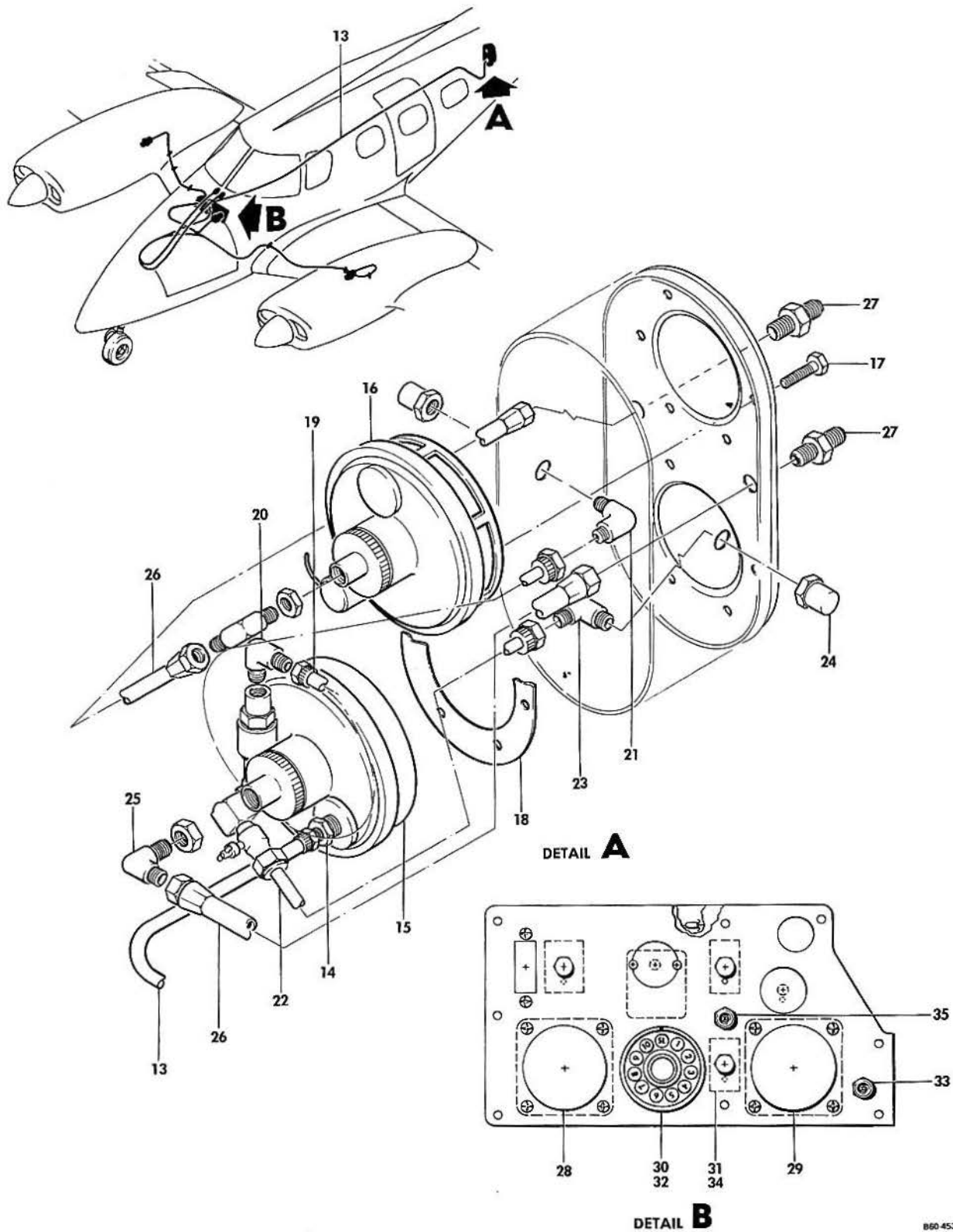


B60-453-12

B E E C H C R A F T  
DUKE B60  
I L L U S T R A T E D P A R T S C A T A L O G

GAMA/ATA CODE & INDEX NO.	PART NO.	DESCRIPTION	UNITS PER ASSY	USABLE ON CODE		
					1	2
30-01	60-540000-3	PRESSURIZATION INSTL. . . . .	NP	1		
		FOR SPARES ORDER KIT 60-5024-3S				
	60-540011-27	• VALVE INSTL,RH FIREWALL . . . . .	NP	1		
	60-540011-29	• VALVE INSTL,LH FIREWALL . . . . .	NP	1		
- 1	60-540012-9	• HOUSING,LH FIREWALL VALVE . . . . .	1	1		
	60-540012-5	• HOUSING,RH FIREWALL VALVE . . . . .	1	1		
- 2	60-540011-53	• GASKET,HOUSING TO FIREWALL/LH AND RH/ . . . . .	1	1		
- 3	60-540011-51	• GASKET,DUCT TO FIREWALL/LH AND RH/ . . . . .	1	1		
- 4	60-540011-41	• DUCT ASSY,LH. . . . .	1	1		
	60-540011-43	• DUCT ASSY,RH. . . . .	1	1		
		/ATTACHING PARTS/				
- 5	130909B14	• BOLT. . . . .	5			
	AN960-10L	• WASHER. . . . .	5			
- 6	AN742-32	• CLAMP,LH. . . . .	1			
	AN750-32	• CLAMP,RH. . . . .	1			
	AN520R10-6	• SCREW,LH. . . . .	1			
	AN520R8-6	• SCREW,RH. . . . .	2			
	AN960D10L	• WASHER,LH . . . . .	1			
	AN960-8	• WASHER,RH . . . . .	2			
	130909N29	• NUT,LH. . . . .	1			
		*-----*				
- 7	102-540017-9	• PLATE . . . . .	1	1		
		/ATTACHING PARTS/				
- 8	130909N16	• NUT,CASTELLATED . . . . .	1			
	105739X-ZZ0550	• BUSHING . . . . .	1			
	111504ZK0023-7	• SPRING. . . . .	1			
	AN380-2-2	• PIN,COTTER. . . . .	1			
	AN316-4R	• NUT . . . . .	2			
		*-----*				
- 9	102-540018-1	• SEAL. . . . .	1	1		
- 10	130909B23	• BOLT. . . . .	1	1		
	AN960-10L	• WASHER. . . . .	1	1		
	130909N29	• NUT . . . . .	1	1		
- 11	115167DXX080404	• DUCT,LH . . . . .	1	1		
	115167DXX080484	• DUCT,RH . . . . .	1	1		
		/ATTACHING PARTS/				
	AN737TW74-91	• CLAMP . . . . .	2			
		*-----*				
- 12	60-540017	• CONTROLS INSTL,CABIN AIR. . . . .	NP	1		
	60-384028-9	• CONTROL ASSY,LH FIREWALL PRESSURE VALVE . . . . .	1	1		
	60-384028-7	• CONTROL ASSY,RH FIREWALL PRESSURE VALVE . . . . .	1	1		
		/ATTACHING PARTS/				
	MS21919DG5	• CLAMP . . . . .	4			
	AN743-12	• BRACKET . . . . .	1			
	MS35206-245	• SCREW . . . . .	3			
	AN960-8	• WASHER. . . . .	3			
	130909N28	• NUT . . . . .	3			
	AN520-10R-28	• SCREW . . . . .	1			
	AN960-10L	• WASHER. . . . .	1			
	130909N29	• NUT . . . . .	1			
	MS35489-9S	• GROMMET . . . . .	6			
	MS35489-10S	• GROMMET . . . . .	3			
		*-----*				

BEECHCRAFT  
DUKE B60  
ILLUSTRATED PARTS CATALOG



B60 453 13

B E E C H C R A F T  
DUKE B60  
I L L U S T R A T E D P A R T S C A T A L O G

GAMA/ATA CODE & INDEX NO.	PART NO.	DESCRIPTION	UNITS PER ASSY	USABLE ON CODE
		1 2 3 4 5 6 7		
30-01	60-540035-1	. PRESSURIZATION CONTROLS INSTL,CABIN . . . . .	NP	1
- 13	60-540035-7	. . TUBE . . . . .	1	1
		/ATTACHING PARTS/		
	ABMS-A	. . BLOCK,CLAMP . . . . .	2	
		-----*		
- 14	268P1/4X3/8	. . CONNECTOR . . . . .	1	1
- 15	4180-00-74	. . VALVE,OUTFLOW . . . . .	1	1
- 16	396-00-72	. . VALVE,SAFETY . . . . .	1	1
		/ATTACHING PARTS/		
- 17	AN3H4A	. . BOLT . . . . .	12	
	AN960-10L	. . WASHER . . . . .	12	
		-----*		
- 18	50-554230-83	. . GASKET . . . . .	2	1
- 19	60-540035-9	. . TUBE ASSY . . . . .	1	1
- 20	MS20822-4D	. . ELBOW . . . . .	1	1
- 21	AN833-4D	. . ELBOW . . . . .	1	1
		/ATTACHING PARTS/		
	AN924-4D	. . NUT . . . . .	1	
	AN960-716	. . WASHER . . . . .	1	
		-----*		
- 22	60-540035-3	. . TUBE . . . . .	1	1
- 23	269P1/4X1/8	. . ELBOW . . . . .	2	1
- 24	129B1/8NPT	. . COUPLING,ANCHOR . . . . .	1	1
- 25	6C5X5	. . ELBOW . . . . .	2	1
		/ATTACHING PARTS/		
	MS28778-6	. . PACKING . . . . .	2	
	AN924-6D	. . NUT . . . . .	4	
		-----*		
- 26	AN6270-6-55/8	. . HOSE ASSY . . . . .	2	1
- 27	AN832-6D	. . UNION . . . . .	2	1
		/ATTACHING PARTS/		
	AN960-916L	. . WASHER . . . . .	2	
	AN924-6D	. . NUT . . . . .	4	
		-----*		
- 28	60-324025-1	. . PANEL INSTL,SUB . . . . .	NP	1
- 28	50-380045	. . INDICATOR,CABIN RATE OF CLIMB . . . . .	1	1
- 29	50-380046-3	. . INDICATOR,CABIN ALT & DIFF PRESSURE . . . . .	1	1
		/ATTACHING PARTS/		
	AN507B6R5	. . SCREW . . . . .	7	
	AN960D6L	. . WASHER . . . . .	7	
	MS20365D632	. . NUT . . . . .	7	
		-----*		
- 30	3275-00-1	. . CONTROLLER,PRESSURIZATION . . . . .	1	1
- 31	MS25125-C3	. . SWITCH,PRESSURE DUMP . . . . .	1	1
- 32	4344-00-72	. . CONTROLLER,PRESSURIZATION/OPTIONAL/ . . . . .	1	1
- 33	2TL1-50M	. . SWITCH,PRESSURE DUMP/OPTIONAL/ . . . . .	1	1
- 34	60-324082-5	. . KNOB,CABIN PRESSURIZATION RATE/OPTIONAL/ . . . . .	1	1
- 35	PM6	. . SWITCH,PRESSURE TEST . . . . .	1	1
	60-530305-3	. COVER ASSY,CONTROL VALVE . . . . .	1	1
	60-540025-13	PLUMBING INSTL,PRESSURIZATION/W/O DEICE/. . . . .	NP	1
	60-540025-1	PLUMBING INSTL,PRESSURIZATION/W DEICE/. . . . .	NP	1
		/SEE CHAPTER 21-30-10 FOR BKDN/		

CODES OF EFFECTIVITY

1 P-247 THRU P-307

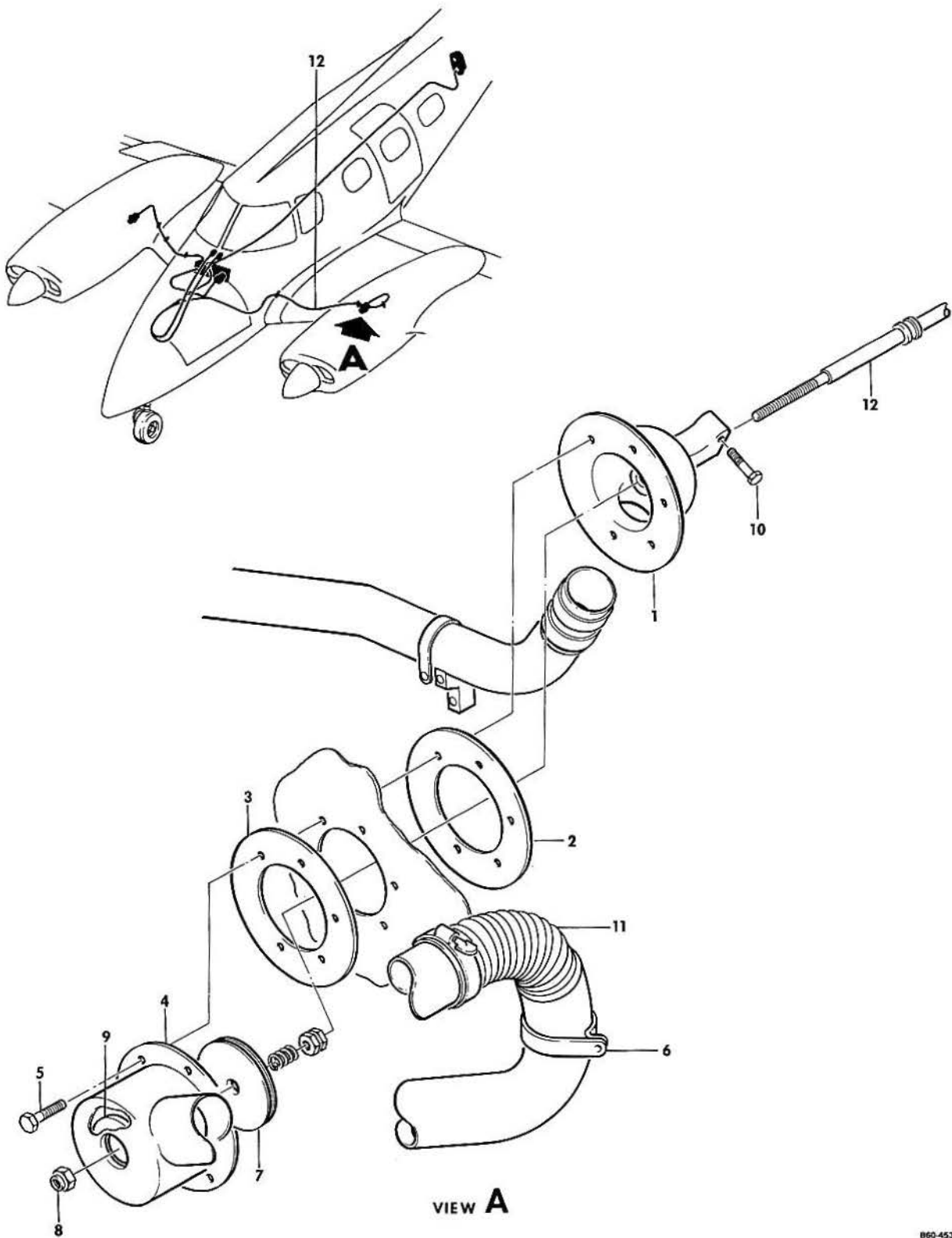




BEECHCRAFT  
DUKE B60  
ILLUSTRATED PARTS CATALOG

21-30-02  
PRESSURIZATION CONTROLS  
P-308 AND AFTER

BEECHCRAFT  
DUKE 860  
ILLUSTRATED PARTS CATALOG

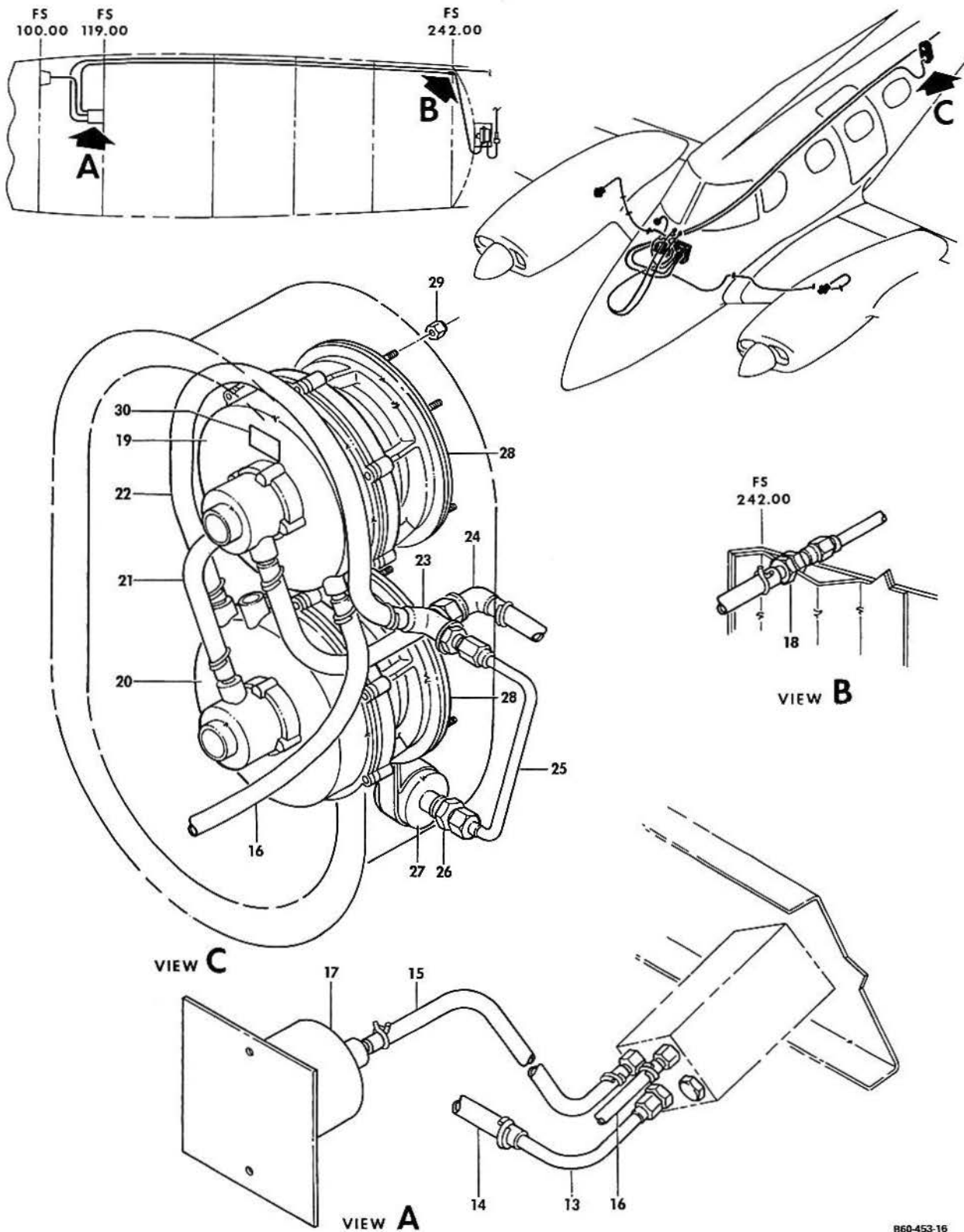


860-453-12

B E E C H C R A F T  
DUKE B60  
I L L U S T R A T E D P A R T S C A T A L O G

SUB-SECT UNIT & ITEM NO.	PART NO.	DESCRIPTION							UNITS PER ASSY	USABLE ON CODE
		1	2	3	4	5	6	7		
30-02	60-540000-5	•	•	•	•	•	•	•	NP	1
	60-540011-29	•	•	•	•	•	•	•	NP	1
	60-540011-27	•	•	•	•	•	•	•	NP	1
- 1	60-540012-9	•	•	•	•	•	•	•	1	1
	60-540012-5	•	•	•	•	•	•	•	1	1
- 2	60-540011-53	•	•	•	•	•	•	•	1	1
- 3	60-540011-51	•	•	•	•	•	•	•	1	1
- 4	60-540011-41	•	•	•	•	•	•	•	1	1
	60-540011-43	•	•	•	•	•	•	•	1	1
		•	•	•	•	•	•	•	/ATTACHING PARTS/	
- 5	130909B14	•	•	•	•	•	•	•	5	
	AN960-10L	•	•	•	•	•	•	•	5	
- 6	AN742-32	•	•	•	•	•	•	•	1	
	AN750-32	•	•	•	•	•	•	•	1	
	AN520R10-6	•	•	•	•	•	•	•	1	
	AN520R8-6	•	•	•	•	•	•	•	2	
	AN960D10L	•	•	•	•	•	•	•	1	
	AN960-8	•	•	•	•	•	•	•	2	
	130909N29	•	•	•	•	•	•	•	1	
		•	•	•	•	•	•	•	/ATTACHING PARTS/	
- 7	102-540017-9	•	•	•	•	•	•	•	1	1
		•	•	•	•	•	•	•	/ATTACHING PARTS/	
- 8	130909N16	•	•	•	•	•	•	•	1	
	MS24665-132	•	•	•	•	•	•	•	1	
	105739X-ZZ0550	•	•	•	•	•	•	•	1	
	111504ZK0023-7	•	•	•	•	•	•	•	1	
	AN316-4R	•	•	•	•	•	•	•	2	
R	AN960-416	•	•	•	•	•	•	•	AR	
		•	•	•	•	•	•	•	/ATTACHING PARTS/	
- 9	102-540018-1	•	•	•	•	•	•	•	1	1
- 10	130909B23	•	•	•	•	•	•	•	1	1
	AN960-10L	•	•	•	•	•	•	•	1	1
	130909N29	•	•	•	•	•	•	•	1	1
- 11	115167DXX080404	•	•	•	•	•	•	•	1	1
	115167DXX080484	•	•	•	•	•	•	•	1	1
		•	•	•	•	•	•	•	/ATTACHING PARTS/	
	AN737TW74-91	•	•	•	•	•	•	•	2	
		•	•	•	•	•	•	•	/ATTACHING PARTS/	
- 12	60-540017	•	•	•	•	•	•	•	NP	1
	60-384028-9	•	•	•	•	•	•	•	1	1
	60-384028-7	•	•	•	•	•	•	•	1	1
		•	•	•	•	•	•	•	/ATTACHING PARTS/	
R	MS21919DG5	•	•	•	•	•	•	•	4	
	AN743-12	•	•	•	•	•	•	•	1	
	MS35206-245	•	•	•	•	•	•	•	3	
	AN960-8	•	•	•	•	•	•	•	3	
	130909N28	•	•	•	•	•	•	•	3	
	AN520-10R-28	•	•	•	•	•	•	•	1	
	AN960-10L	•	•	•	•	•	•	•	1	
	130909N29	•	•	•	•	•	•	•	1	
	MS35489-9S	•	•	•	•	•	•	•	6	
	MS35489-10S	•	•	•	•	•	•	•	3	

BEECHCRAFT  
DUKE B60  
ILLUSTRATED PARTS CATALOG

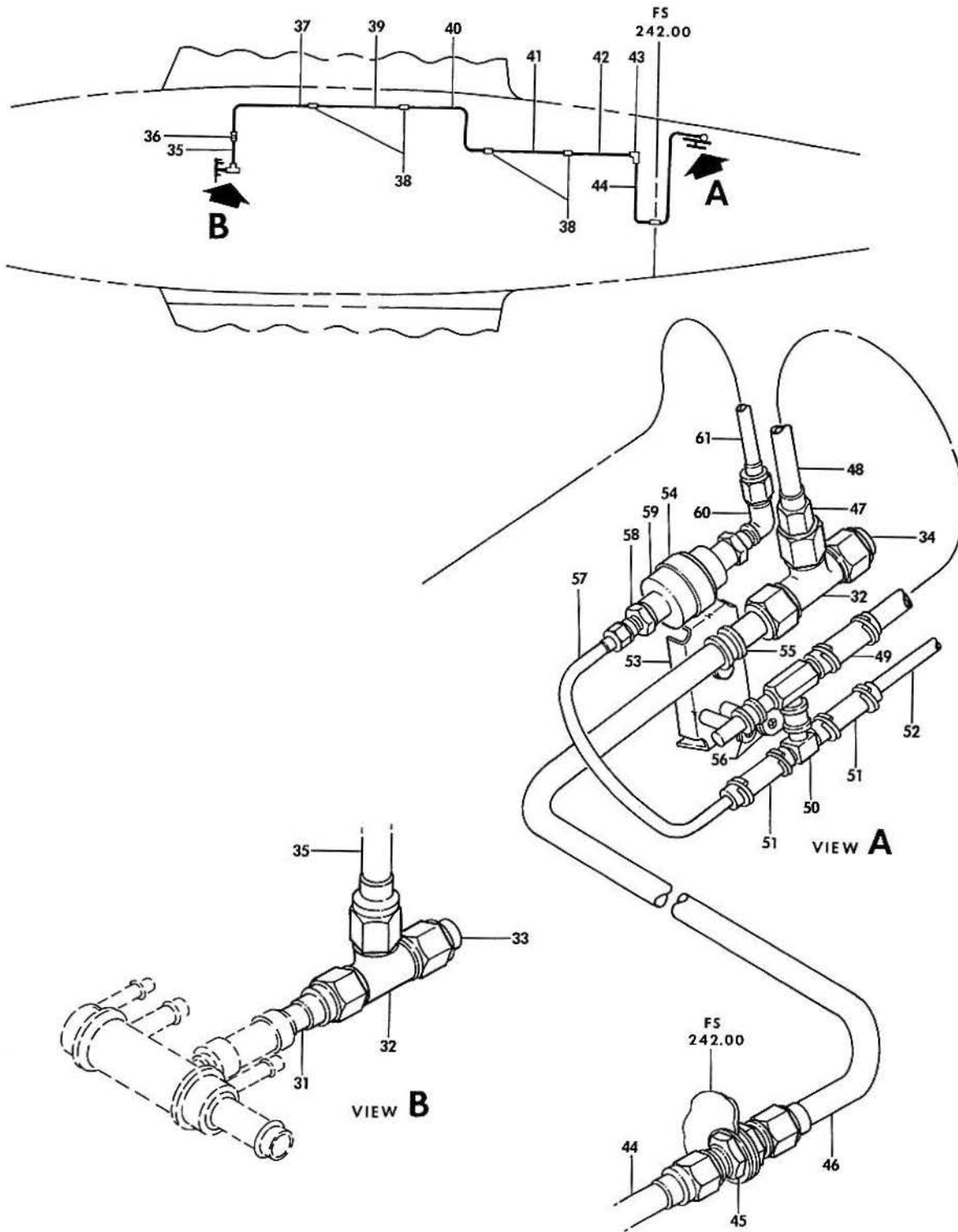


B60-453-16

B E E C H C R A F T  
DUKE B60  
I L L U S T R A T E D P A R T S C A T A L O G

GAMA/ATA CODE & INDEX NO.	PART NO.	DESCRIPTION							UNITS PER ASSY	USABLE ON CODE
		1	2	3	4	5	6	7		
30-02	60-540036-1	PRESSURIZATION CONTROLS INSTL, CABIN. . . . .							NP	1
- 13	102-540020-33	. TUBE ASSY . . . . .							1	1
- 14	60-540036-13	. TUBE, VACUUM . . . . .							1	1
		/ATTACHING PARTS/								
	130292A6	. CLAMP . . . . .							2	
- 15	60-540036-11	. TUBE/TO AUXILIARY VOLUME TANK/. . . . .							1	1
		/ATTACHING PARTS/								
	130292A8	. CLAMP . . . . .							2	
- 16	60-540036-7	. TUBE/TO CONTROLLER VALVE PORT/. . . . .							1	1
		/ATTACHING PARTS/								
	130292A6	. CLAMP . . . . .							2	
- 17	131358-1	. TANK, AUXILIARY VOLUME . . . . .							1	1
		/ATTACHING PARTS/								
	MS35206-263	. SCREW . . . . .							2	
	AN960D10L	. WASHER . . . . .							2	
- 18	AN807-4D	. ADAPTOR, BULKHEAD. . . . .							1	1
	AN960D716L	. WASHER. . . . .							1	1
	AN924-4D	. NUT . . . . .							1	1
- 19	103648-1	. VALVE, OUTFLOW . . . . .							1	1
- 20	103648-1	. VALVE, SAFETY. . . . .							1	1
- 21	60-540036-3	. TUBE. . . . .							2	1
		/ATTACHING PARTS/								
	130292A6	. CLAMP . . . . .							2	
- 22	60-540036-5	. TUBE. . . . .							1	1
		/ATTACHING PARTS/								
	130292A6	. CLAMP . . . . .							2	
- 23	AN838-4D	. ELBOW, BULKHEAD. . . . .							1	1
	AN960D716	. WASHER. . . . .							1	1
	AN924-4D	. NUT . . . . .							1	1
- 24	AN848-4D	. ELBOW, BULKHEAD. . . . .							2	1
	AN960D716L	. WASHER. . . . .							2	1
	AN924-4D	. NUT . . . . .							2	1
- 25	60-540036-9	. TUBE ASSY . . . . .							1	1
- 26	AN816-4D	. NIPPLE. . . . .							2	1
- 27	3303-00-7	. SOLENOID VALVE/ALTERNATE FOR 17780/ . . . . .							1	1
	17780	. SOLENOID VALVE/ALTERNATE FOR 3303-00-7/ . . . . .							1	1
		/ATTACHING PARTS/								
	AN742D20	. CLAMP . . . . .							1	
	MS35206-263	. SCREW . . . . .							1	
- 28	101-540023-1	. GASKET. . . . .							2	1
- 29	130909N28	. NUT . . . . .							12	1
	AN960D8L	. WASHER. . . . .							12	1
- 30	60-540038-1	. DECAL, INSTRUCTION/TORQUE VALUE/ . . . . .							1	1
	R 146918-1	. PLACARD, MAINTENANCE INSTRUCTIONS. . . . .							1	2

BEECHCRAFT  
DUKE B60  
ILLUSTRATED PARTS CATALOG

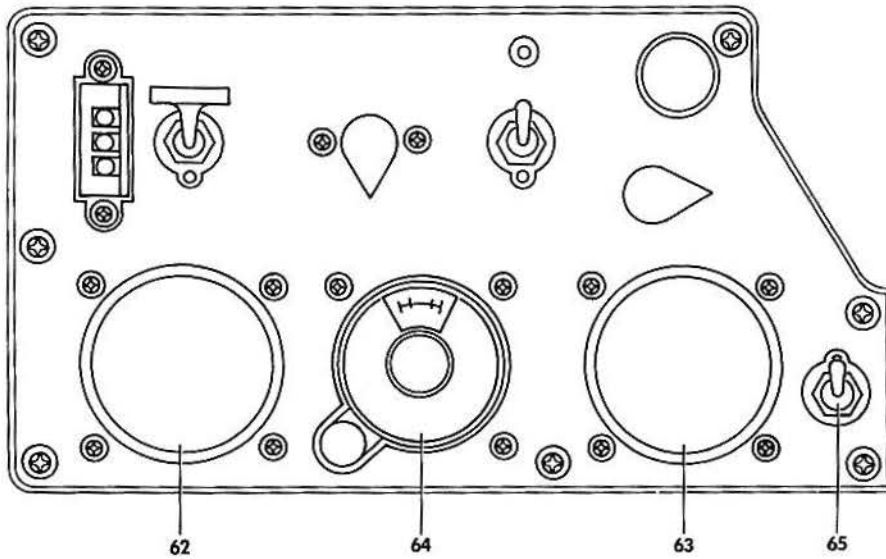


B60-453-17

B E E C H C R A F T  
DUKE 860  
I L L U S T R A T E D P A R T S C A T A L O G

GAMA/ATA CODE & INDEX NO.	PART NO.	DESCRIPTION							UNITS PER ASSY	USABLE ON CODE
		1	2	3	4	5	6	7		
30-02	60-540037-1	PRESSURIZATION PLUMBING INSTL,VACUUM. /ISOBARIC CONTROL AND SAFETY VALVE/							NP	1
- 31	60-970011-69	. TUBE ASSY							1	1
- 32	AN824-10D	. TEE							2	1
- 33	AN929-10	. CAP							1	1
- 34	AN929-10	. CAP/USE IN LIEU OF DEICE OR AUTOPILOT SYSTEM CONNECTIONS/							1	1
- 35	60-970011-115	. TUBE ASSY							1	1
- 36	AN815-10D	. UNION							1	1
- 37	60-970011-117	. TUBE ASSY							1	1
- 38	106200H10-10	. HOSE							4	1
		/ATTACHING PARTS/								
	AN737TW34	. CLAMP							2	
		*-----*								
- 39	60-970011-119	. TUBE							1	1
- 40	60-970011-121	. TUBE							1	1
- 41	60-970011-123	. TUBE							1	1
- 42	60-970011-125	. TUBE ASSY							1	1
- 43	AN821-10D	. ELBOW							1	1
- 44	60-970011-127	. TUBE ASSY							1	1
- 45	AN832-10D	. UNION,BULKHEAD							1	1
	AN924-10D	. NUT							1	1
	AN960D1416	. WASHER/1 EACH SIDE OF BULKHEAD PRESSURE SEAL/							2	1
- 46	60-970011-145	. TUBE ASSY							1	1
- 47	AN894D10-8	. BUSHING							1	1
- 48	60-540037-27	. TUBE ASSY/W/O DEICE SYSTEM/							1	1
- 49	130936P10MC0020	. TUBE							1	1
		/ATTACHING PARTS/								
	130292A10	. CLAMP							2	
		*-----*								
- 50	2H49-3	. EJECTOR							1	1
- 51	130936P6MC0020	. TUBE							2	1
		/ATTACHING PARTS/								
	130292A6	. CLAMP							2	
		*-----*								
- 52	60-540037-11	. TUBE ASSY/TO DUMP SOLENOID VALVE/							1	1
- 53	60-540037-13	. BRACKET							1	1
- 54	AN742D20	. CLAMP,SOLENOID							1	1
		/ATTACHING PARTS/								
	MS35207-264	. SCREW							1	
	AN960D10L	. WASHER							1	
	130909N29	. NUT							1	
		*-----*								
- 55	MS21919DG10	. CLAMP,TUBE							1	1
		/ATTACHING PARTS/								
	MS35207-263	. SCREW							1	
	AN960D10L	. WASHER							1	
	130909N29	. NUT							1	
		*-----*								
- 56	MS21919DG6	. CLAMP,EJECTOR							1	1
		/ATTACHING PARTS/								
	102933D42M1110	. SPACER							2	
	MS35207-270	. SCREW							2	
	AN960D10L	. WASHER							2	
	130909N29	. NUT							2	
		*-----*								
- 57	60-540037-9	. TUBE ASSY							1	1
- 58	AN815-40	. UNION							1	1
	MS28778-4	. O RING							1	1
- 59	2297-00-9	. SOLENOID/ALTERNATE FOR 17745/							1	1
	17745	. SOLENOID/ALTERNATE FOR 2297-00-9/							1	1
- 60	AN833-4D	. ELBOW							1	1
	MS28778-4	. O RING							1	1
	AN924-4D	. NUT							1	1
- 61	60-540037-15	. TUBE ASSY							1	1

BEECHCRAFT  
DUKE B60  
ILLUSTRATED PARTS CATALOG



VIEW A

B60-453-18



B E E C H C R A F T  
DUKE B60  
I L L U S T R A T E D P A R T S C A T A L O G

GAMA/ATA CODE & INDEX NO.	PART NO.	DESCRIPTION							UNITS PER ASSY	USABLE ON CODE
		1	2	3	4	5	6	7		
30-02 - 62	50-380045								1	1
- 63	50-380046-3								1	1
	MS24693-25								7	
	AN960D6L								7	
	MS20365D632								7	
- 64	130374-2								1	1
	MS24693-30								4	
- 65	2TL1-50K								1	1
	60-530305-3								1	1

CODES OF EFFECTIVITY

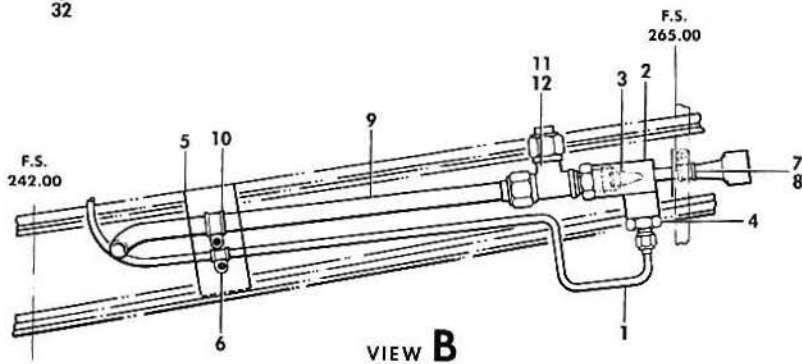
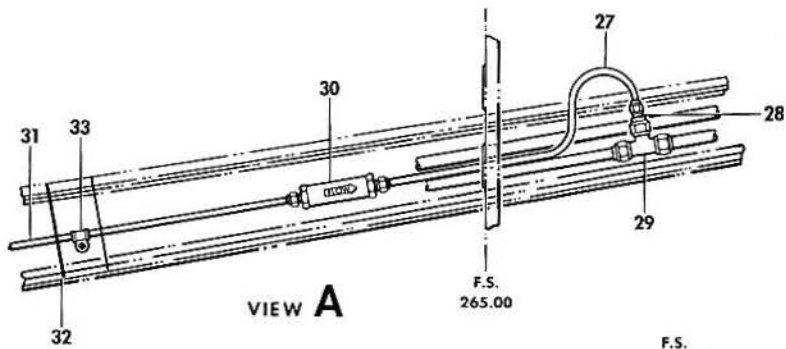
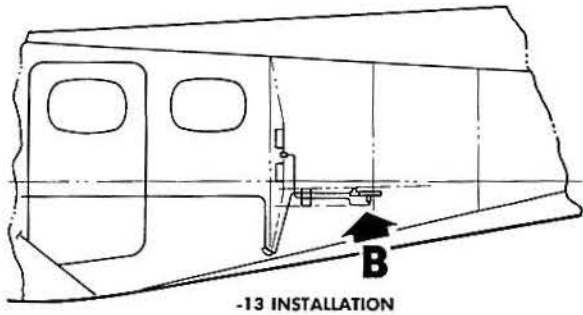
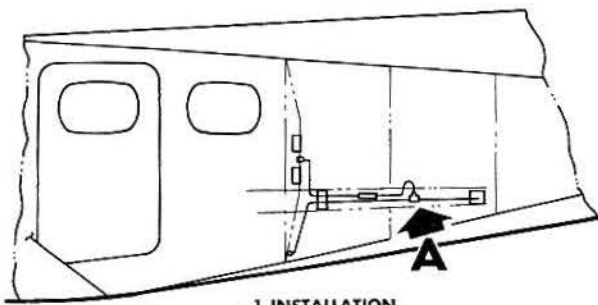
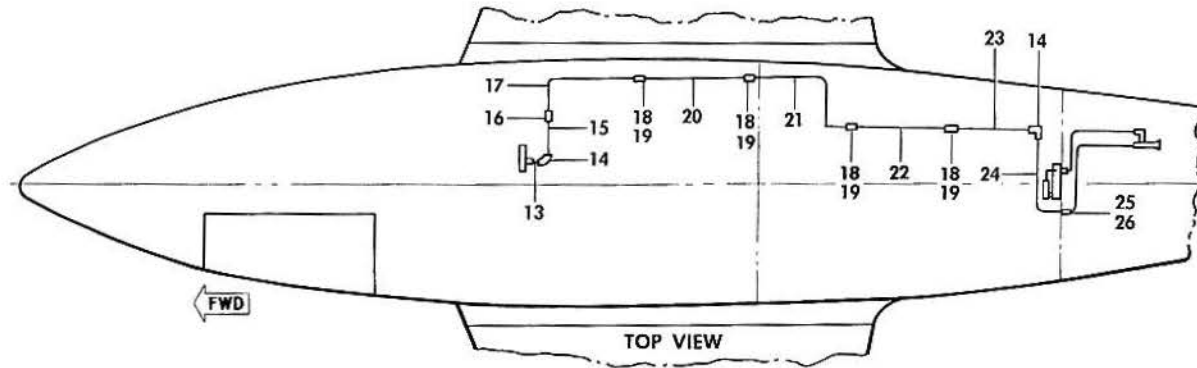
1 P-308 AND AFTER      2 P-578 AND AFTER



B E E C H C R A F T  
DUKE B60  
I L L U S T R A T E D P A R T S C A T A L O G

21-30-10  
PRESSURIZATION PLUMBING INSTALLATION  
P-247 THRU P-307

BEECHCRAFT  
DUKE B60  
ILLUSTRATED PARTS CATALOG



B60-452-5

B E E C H C R A F T  
DUKE B60  
I L L U S T R A T E D P A R T S C A T A L O G

GAMA/ATA CODE & INDEX NO.	PART NO.	DESCRIPTION	UNITS PER ASSY	USABLE ON CODE		
					1	2
30-10	60-540025-13	PLUMBING INSTL,PRESSURIZATION/WITHOUT DEICE/	NP	1		
- 1	60-540025-5	. TUBE ASSY . . . . .	1	1		
- 2	19E26-2A	. EJECTOR . . . . .	1	1		
- 3	60-540025-11	. RESTRICTOR . . . . .	1	1		
- 4	AN919-130	. REDUCER . . . . .	1	1		
	MS28778-10	. PACKING . . . . .	1	1		
- 5	60-970011-75	. BRACKET . . . . .	1	1		
- 6	MS21919DG4	. CLAMP . . . . .	1	1		
- 7	AN743-12	. BRACKET . . . . .	1	1		
- 8	MS21919DG6	. CLAMP . . . . .	1	1		
- 9	60-970011-145	. TUBE ASSY . . . . .	1	1		
- 10	MS21919DG10	. CLAMP . . . . .	1	1		
		/ATTACHING PARTS/				
	AN515-8R	. SCREW . . . . .	4			
	AN960-8	. WASHER . . . . .	4	1		
	MS21042L08	. NUT . . . . .	4	1		
		-----*				
- 11	AN804-10D	. TEE . . . . .	1	1		
- 12	AN929-10	. CAP ASSY . . . . .	1	1		
	MS28778-10	. PACKING . . . . .	1	1		
- 13	60-970011-69	. TUBE ASSY . . . . .	1	1		
- 14	AN821-10D	. ELBOW . . . . .	2	1		
- 15	60-970011-115	. TUBE ASSY . . . . .	1	1		
- 16	AN815-10D	. UNION . . . . .	1	1		
- 17	60-970011-117	. TUBE ASSY . . . . .	1	1		
- 18	106200H10-10	. HOSE . . . . .	4	1		
- 19	AN737TW34	. CLAMP . . . . .	8	1		
- 20	60-970011-119	. TUBE . . . . .	1	1		
- 21	60-970011-121	. TUBE . . . . .	1	1		
- 22	60-970011-123	. TUBE . . . . .	1	1		
- 23	60-970011-125	. TUBE ASSY . . . . .	1	1		
- 24	60-970011-127	. TUBE ASSY . . . . .	1	1		
- 25	AN832-10D	. BULKHEAD FITTING . . . . .	1	1		
- 26	AN924-10D	. NUT . . . . .	2	1		
	AN960-1416L	. WASHER . . . . .	1	1		
- 27	60-540025-1	PLUMBING INSTL,PRESSURIZATION/WITH DEICE/	NP	1		
- 28	60-540025-15	. TUBE ASSY . . . . .	1	1		
- 29	C5015X8X4	. REDUCER . . . . .	1	1		
- 30	AN824-8D	. TEE . . . . .	1	1		
- 31	50-380170-11	. CHECK VALVE . . . . .	1	1		
- 32	60-540025-17	. TUBE ASSY . . . . .	1	1		
- 33	60-970011-75	. BRACKET . . . . .	1	1		
	MS21919DG4	. CLAMP . . . . .	1	1		
		/ATTACHING PARTS/				
	AN815-8R	. SCREW . . . . .	1			
	AN960-8	. WASHER . . . . .	1			
	MS21042L08	. NUT . . . . .	1			
		-----*				

NOTE SEE CHAPTER 30 FOR DEICE PLUMBING INSTL  
AND CHAPTER 21-30-02 FOR P-308 AND AFTER.

CODES OF EFFECTIVITY

1 P-247 THRU P-307

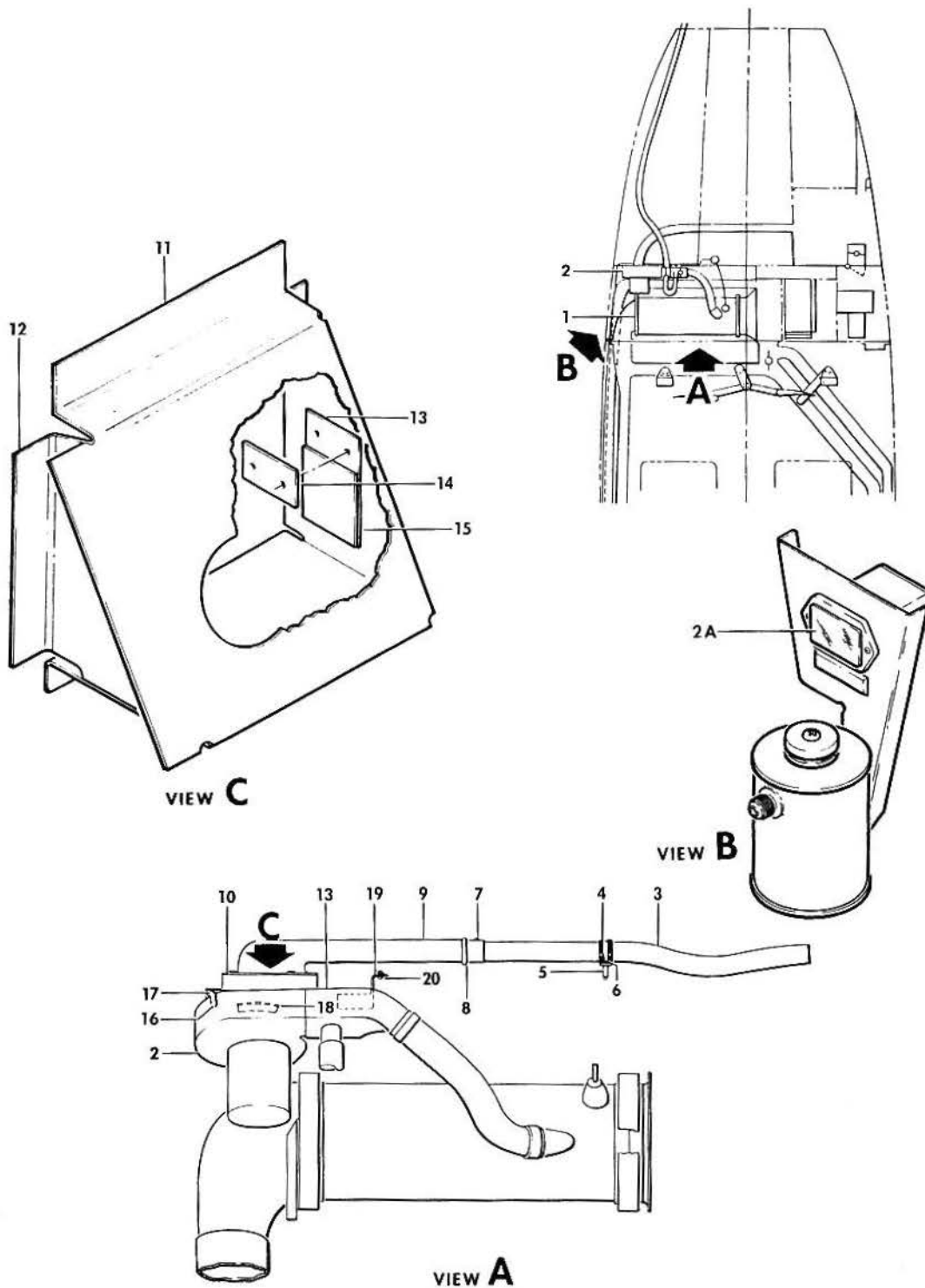
\*END\*



BEECHCRAFT  
DUKE B60  
ILLUSTRATED PARTS CATALOG

21-40-01  
CABIN HEATER

BEECHCRAFT  
DUKE B60  
ILLUSTRATED PARTS CATALOG



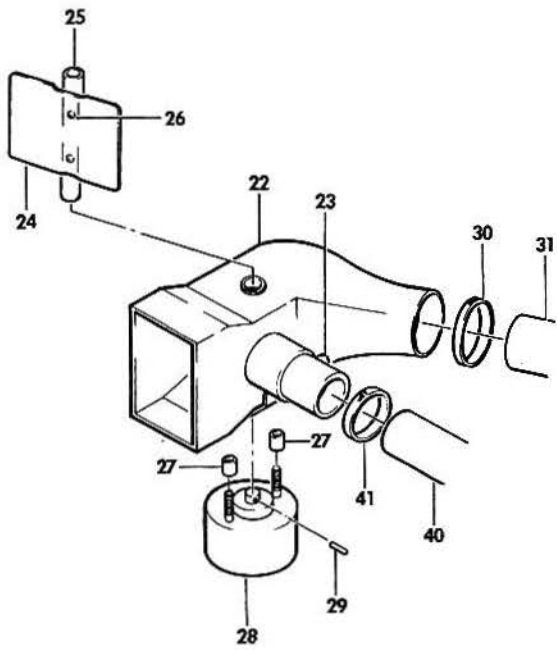
B60-412-E



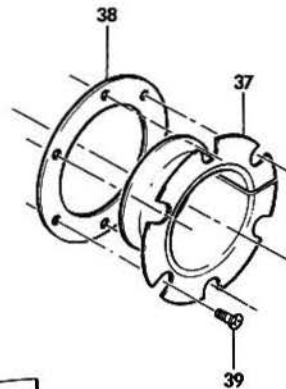
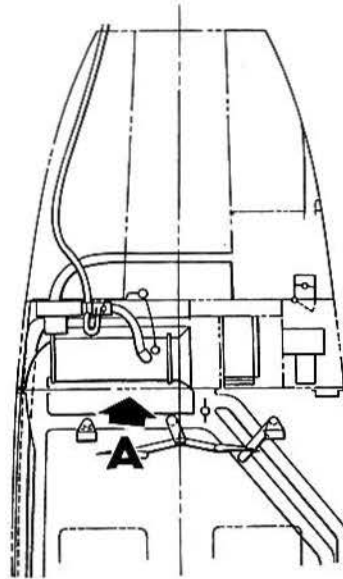
B E E C H C R A F T  
DUKE B60  
I L L U S T R A T E D P A R T S C A T A L O G

GAMA/ATA CODE & INDEX NO.	PART NO.	DESCRIPTION							UNITS PER ASSY	USABLE ON CODE
		1	2	3	4	5	6	7		
40-01	R 60-550011	HEATER INSTL,CABIN . . . . .							NP	
	R 60-550011-21	. HEATER ASSY,CABIN . . . . .							1	
- 1	R 60-384014-3	. . HEATER ASSY,CABIN . . . . .							1	
		NOTE SEE JANITROL MANUAL 57D83 FOR BREAKDOWN								
- 2	60-550033-3	. BLOWER,COMBUSTION AIR . . . . .							1	
		NOTE SEE JANITROL MANUAL 50D91 FOR BREAKDOWN								
- 2A	R 35-380138-5	. HOUR METER,HEATER . . . . .							1	1
	R MS35214-28	/ATTACHING PARTS/ . SCREW . . . . .							2	1
	R 102-550056-1	. IDENTIFICATION PLATE/HEATER HOURS/. . . . .							1	1
- 3	60-550023	. DUCT,COMBUSTION AIR . . . . .							1	
- 4	TA4C87WD17-36	. CLAMP . . . . .							1	
		/ATTACHING PARTS/								
- 5	NAS43003-48	. SPACER. . . . .							2	
- 6	AN520-10R20	. SCREW . . . . .							2	
- 7	AN530-8R6	. SCREW . . . . .							1	
	A1788-8Z3	. NUT,TINN. . . . .							1	
- 8	60-550011-11	. GROMMET . . . . .							2	
- 9	60-550024	. DUCT. . . . .							1	
	130909B14	/ATTACHING PARTS/ . BOLT. . . . .							4	
- 10	60-550029-603	. SUPPORT ASSY,COMBUSTION AIR BLOWER. . . . .							1	
- 11	60-550029-3	. . SUPPORT,BLOWER. . . . .							1	
- 12	60-550029-5	. . CHANNEL,BLOWER SUPPORT. . . . .							1	
	13007A1032	. . NUTPLATE,DOUBLE LUG . . . . .							2	
	13007B1032	. . NUTPLATE,SINGLE LUG . . . . .							2	
	60-550029-15	. . DOOR ASSY . . . . .							1	
- 13	60-550029-21	. . . SEAL. . . . .							1	
- 14	60-550029-19	. . . PLATE,ATTACHING . . . . .							1	
- 15	60-550029-17	. . . PLATE . . . . .							1	
- 16	AN743-13	. BRACKET . . . . .							4	
		/ATTACHING PARTS/								
- 17	130909B14	. BOLT. . . . .							4	
- 18	60-550035	. GASKET. . . . .							1	
- 19	60-550037	. SUPPORT . . . . .							1	
		/ATTACHING PARTS/								
- 20	NAS220-8	. SCREW . . . . .							2	
	AN960-8	. WASHER. . . . .							2	
	R 60-550011-19	. TUBE ASSY . . . . .							1	

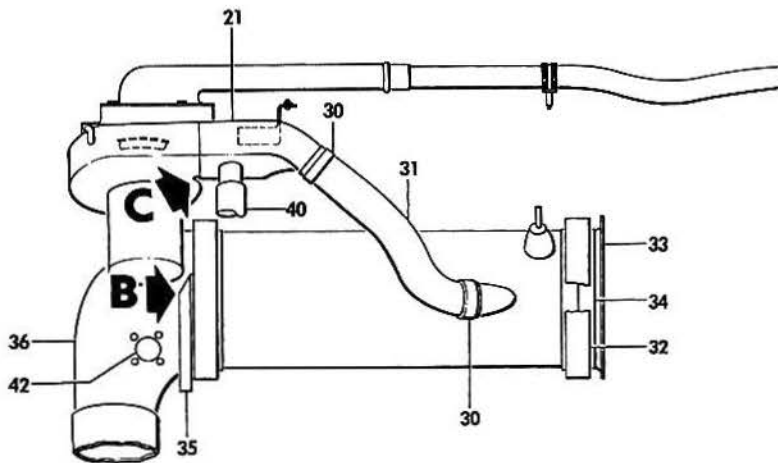
BEECHCRAFT  
DUKE B60  
ILLUSTRATED PARTS CATALOG



VIEW C



VIEW B



VIEW A

960-412-7

BEECHCRAFT  
DUKE B60  
ILLUSTRATED PARTS CATALOG

GAMA/ATA CODE & INDEX NO.	PART NO.	DESCRIPTION	UNITS PER ASSY	USABLE ON CODE
		1 2 3 4 5 6 7		
40-01 - 21	60-550025	• VALVE ASSY,BLOWER SELECTOR. . . . .	1	
		• /ATTACHING PARTS/		
	MS35206-243	• SCREW . . . . .	2	
	AN960-8L	• WASHER. . . . .	2	
	130290-3	• CLIPNUT . . . . .	2	
	60-550026	• VALVE BODY ASSY . . . . .	1	
- 22	60-550026-9	• SHELL ASSY. . . . .	1	
- 23	60-550026-3	• BRACKET . . . . .	2	
	NAS696A08	• NUTPLATE. . . . .	2	
- 24	60-550028	• VANE,SELECTOR VALVE . . . . .	1	
- 25	60-550027	• SHAFT . . . . .	1	
		• /ATTACHING PARTS/		
- 26	MS35206-227	• SCREW . . . . .	2	
	AN936A6	• WASHER. . . . .	2	
	60-364014	• SOLENOID ASSY . . . . .	1	
		• /ATTACHING PARTS/		
- 27	100696DZL008	• SPACER. . . . .	2	
	AN960-8	• WASHER. . . . .	2	
	130909N28	• NUT . . . . .	2	
	A35243-030	• SOLENOID,SELECTOR VALVE . . . . .	1	
- 29	52-018-078-0500	• PIN,ROLL. . . . .	1	
- 30	105798-6	• CLAMP . . . . .	2	
- 31	BE704-6-62-4	• DUCT, COMBUSTION AIR . . . . .	1	
- 32	43H10-4-625-7	• CLAMP,HEATER. . . . .	2	
- 33	60-550082	• FLANGE ASSY . . . . .	1	
- 34	60-550083	• RING ASSY . . . . .	2	
	60-550083-3	• RING,SHIM . . . . .	AR	
		• /ATTACHING PARTS/		
	130909B14	• BOLT. . . . .	12	
	NAS1598D3Y	• WASHER. . . . .	12	
- 35	60-550030-1	• SUPPORT,ELBOW . . . . .	1	
- 36	60-550032-9	• ELBOW ASSY,HEATER OUTLET. . . . .	1	
- 37	60-550038	• COLLAR,HEATER EXHAUST . . . . .	1	
	AN737TW74-91	• CLAMP . . . . .	1	
- 38	60-550039	• RETAINER,COLLAR . . . . .	1	
		• /ATTACHING PARTS/		
- 39	AN509-8R7	• SCREW . . . . .	6	
	130290-3	• CLIPNUT . . . . .	6	
- 40	111728-8A157	• DUCT,ELECTRONICS COMPARTMENT COOLING. . . . .	1	
		• /ATTACHING PARTS/		
- 41	AN737TW46	• CLAMP . . . . .	1	
- 42	AYLF3001-1	• SENSOR,HEATER DISCHARGE . . . . .	1	
		• /ATTACHING PARTS/		
R	MS35206-230	• SCREW . . . . .	4	
	AN960-6L	• WASHER. . . . .	4	
	MS20995C32	• LOCKWIRE. . . . .	AR	
	MK1000-06	• NUTPLATE. . . . .	4	

CODES OF EFFECTIVITY

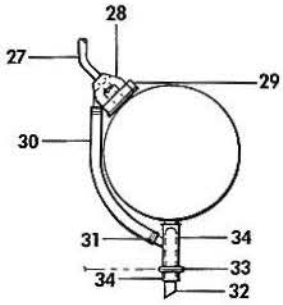
1 P-572 AND AFTER



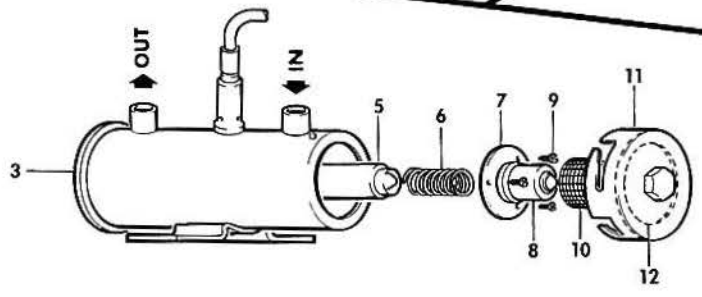
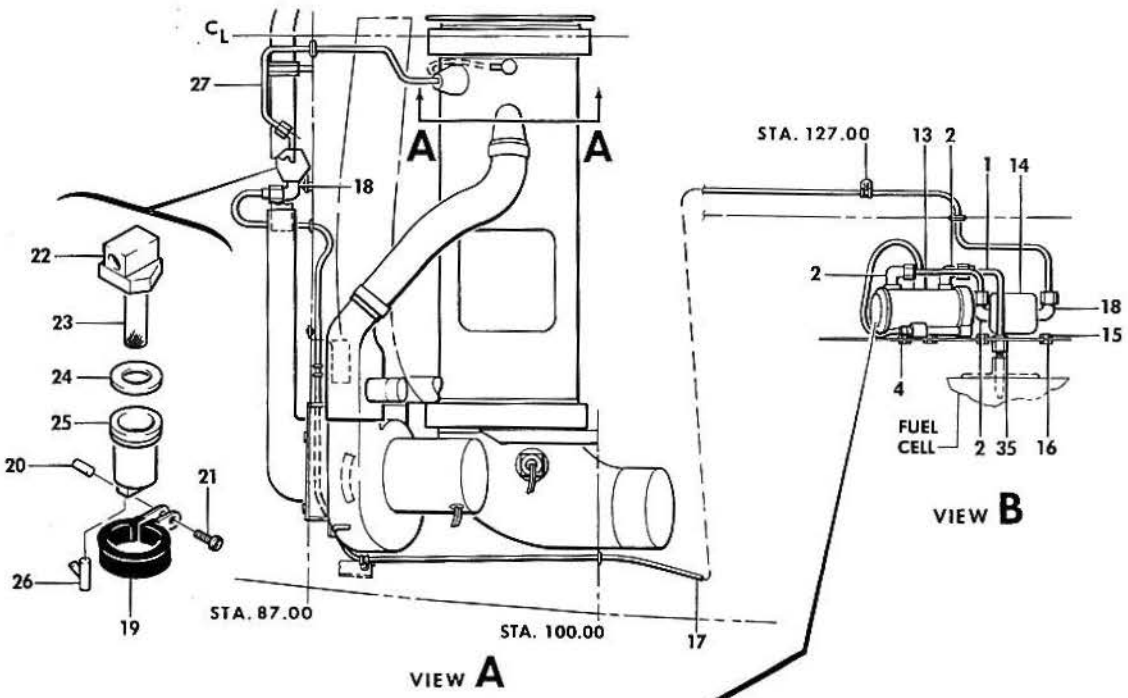
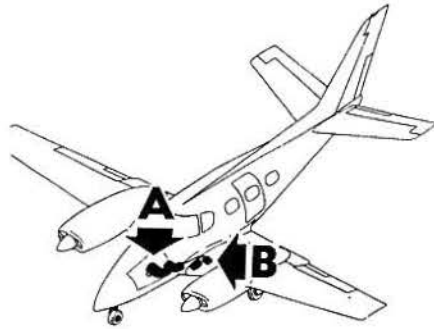
BEECHCRAFT  
DUKE B60  
ILLUSTRATED PARTS CATALOG

21-40-10  
HEATER FUEL PLUMBING

BEECHCRAFT  
DUKE 860  
ILLUSTRATED PARTS CATALOG



DETAIL A-A



B60-413-2

FIGURE 40-10. HEATER FUEL PLUMBING

BEECHCRAFT  
DUKE B60  
ILLUSTRATED PARTS CATALOG

GAMA/ATA CODE & INDEX NO.	PART NO.	DESCRIPTION	UNITS							USABLE ON CODE	
			1	2	3	4	5	6	7		PER ASSY
40-10	60-550011	HEATER INSTL,CABIN. . . . .								NP	
- 1	60-550011-15	. TUBE/FUEL CELL TO PUMP/ . . . . .								1	1
	60-550011-25	. TUBE ASSY/FUEL CELL TO PUMP/. . . . .								1	2
	366-00-17	. VALVE,CHECK . . . . .								1	2
	60-550011-23	. TUBE ASSY/FUEL CELL TO PUMP/. . . . .								1	2
- 2	MS20822-4D	. ELBOW . . . . .								2	
- 3	476284	. PUMP,HEATER FUEL. . . . . /ATTACHING PARTS/								1	
- 4	130909814	. BOLT. . . . .								2	
	AN960-10	. WASHER. . . . .								2	
		*-----*									
- 5	476474	. . PLUNGER ASSY. . . . .								1	
- 6	476285	. . SPRING,PLUNGER. . . . .								1	
- 7	475126	. . GASKET,PLUNGER SPRING CUP . . . . .								NP	
- 8	476364	. . CUP,PLUNGER SPRING. . . . .								1	
- 9	490028	. . SCREW . . . . .								3	
- 10	475634	. . FILTER SCREEN . . . . .								1	
- 11	476563	. . COVER AND GASKET ASSY . . . . .								NP	
- 12	479136	. . GASKET,COVER. . . . .								1	
- 13	60-550011-5	. TUBE ASSY/PUMP TO REGULATOR/. . . . .								1	
- 14	A14D11-70	. REGULATOR,PRESSURE. . . . . /ATTACHING PARTS/								1	
	MS35206-243	. SCREW . . . . .								2	
	AN960-8	. WASHER. . . . .								2	
		*-----*									
- 15	60-550057	. SUPPORT,REGULATOR . . . . . /ATTACHING PARTS/								1	
- 16	130909814	. BOLT. . . . .								2	
	AN960-10L	. WASHER. . . . .								2	
		*-----*									
- 17	60-550011-7	. TUBE,ASSY/REGULATOR TO FILTER/. . . . .								1	
- 18	300-2-2	. ELBOW . . . . .								2	
	1701X-3	. ELBOW/ALTERNATE FOR 300-2-2 ELBOW/. . . . .								2	
	414-183976-15	. FILTER ASSY,HEATER FUEL . . . . . /ATTACHING PARTS/								1	
- 19	MS21919WDG18	. CLAMP . . . . .								1	
- 20	NAS43DD3-8	. SPACER. . . . .								1	
- 21	MS35207-264	. SCREW . . . . .								1	
		*-----*									
- 22	414-183976-17	. . CAP . . . . .								1	
- 23	F2X2T3	. . ELEMENT,FILTER. . . . .								1	
- 24	414-183976-9	. . GASKET. . . . .								1	
- 25	414-183976-11	. . BOWL. . . . .								1	
- 26	CCA4850	. . VALVE,DRAIN . . . . .								1	
- 27	60-550011-19	. TUBE ASSY/FILTER TO HEATER/ . . . . .								1	
- 28	60-550043	. COVER ASSY,HEATER FUEL. . . . . /ATTACHING PARTS/								1	
- 29	105798-6	. CLAMP . . . . .								1	
		*-----*									
- 30	60-550011-13	. TUBE,HEATER FUEL INLET DRAIN. . . . . /ATTACHING PARTS/								1	
- 31	6208	. CLAMP . . . . .								2	
		*-----*									
- 32	60-550011-9	. TUBE,HEATER FUEL DRAIN. . . . .								1	
- 33	MS35489-17	. GROMMET . . . . .								1	
- 34	60-550042	. TUBE ASSY,HEATER FUEL DRAIN . . . . .								1	
- 35	R 102-920011-1	. STRAINER ASSY,HEATER FUEL/REPLACES 60-921019/								1	
	R 35-921532	. WASHER. . . . .								1	1
	R 6KS3	. CLAMP . . . . .								1	1

CODES OF EFFECTIVITY

1 P-247 THRU P-555      2 P-556 AND AFTER

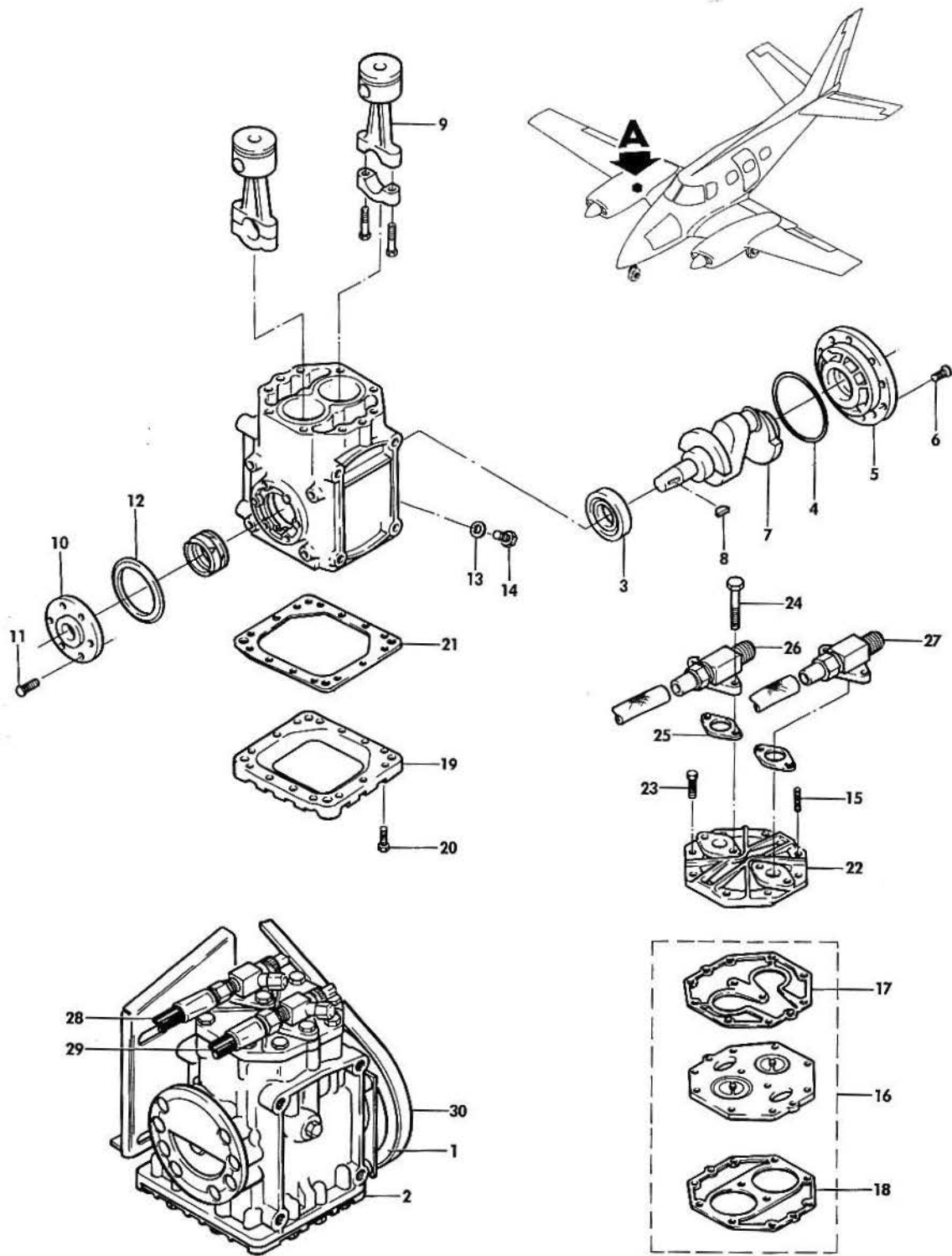




BEECHCRAFT  
DUKE B60  
ILLUSTRATED PARTS CATALOG

21-50-01  
COMPRESSOR SECTION

BEECHCRAFT  
DUKE B60  
ILLUSTRATED PARTS CATALOG



VIEW A

B60-425-1

BEECHCRAFT  
DUKE B60  
ILLUSTRATED PARTS CATALOG

GAMA/ATA CODE & INDEX NO.	PART NO.	DESCRIPTION							UNITS PER ASSY	USABLE ON CODE
		1	2	3	4	5	6	7		
50-01	60-555034-27	PLUMBING INSTL, WING							NP	
- 1	60-555034-601	COMPRESSOR ASSY/WITH MAGNETIC CLUTCH/							1	
	60-555019-25	CLUTCH ASSY, MAGNETIC.							1	
	NAS1351-5LL24	/ATTACHING PARTS/								
	100951DD125YH	SCREW/SHAFT ATTACHING/							1	
		WASHER							1	
- 2	60-555041-1	COMPRESSOR ASSY							1	
		/ATTACHING PARTS/								
	60-555034-33	STUD							4	
	MS15989HP15	STUD/ALTERNATE FOR 60-555034-33/							4	
	60-910000-61	WASHER							4	
	LW11010	SPACER							4	
	AN960-616	WASHER							4	
	130909N25	NUT							4	
- 3	029-13099	BEARING, FRONT							1	
- 4	028-07145	O RING							1	
- 5	088-16674	HOUSING, REAR BEARING							1	
		/ATTACHING PARTS/								
- 6	021-12372	SCREW							4	
		BEARING REAR							1	
- 7	029-12218	CRANKSHAFT							1	
- 8	088-16052-002	KEY							1	
- 9	029-09888	PISTON AND CONNECTING ROD ASSY							2	
- 10	388-16351-002	GASKET KIT, SHAFT SEAL							1	
	488-16756	/ATTACHING PARTS/								
- 11	021-12662	BOLT							6	
- 12	028-07542	O RING							1	
- 13	028-07140	O RING							1	
- 14	021-12373	PLUG, OIL FILL							1	
- 15	029-09829	PIN, DOWEL							2	
- 16	488-16319	PLATE ASSY, VALVE							1	
- 17	028-07144	GASKET, CYLINDER HEAD							1	
- 18	028-08155	GASKET, CYLINDER							1	
- 19	012-05277	PLATE, BASE							1	
		/ATTACHING PARTS/								
- 20	021-12662	BOLT							14	
- 21	028-07142	GASKET							1	
- 22	488-16346	CYLINDER HEAD/WITH GASKETS/							1	
		/ATTACHING PARTS/								
- 23	021-12578	BOLT							8	
- 24	021-13134	BOLT							4	
- 25	028-07153	GASKET, FLANGE SERVICE VALVE							2	
- 26	022-02344	VALVE, FLANGE SERVICE/1/2 SAE FLANGE/							1	
	022-02353	VALVE, FLANGE SERVICE/1/2 SAE FLANGE/							1	
- 27	022-02123	VALVE, FLANGE SERVICE/5/8 SAE FLANGE/							1	
	022-02345	VALVE, FLANGE SERVICE/5/8 SAE FLANGE/							1	
- 28	60-555019-5	HOSE ASSY							1	1
	60-555034-37	HOSE ASSY							1	2
	AP50A10	GASKET							1	
- 29	60-555019-1	HOSE ASSY							1	1
	60-555034-35	HOSE ASSY							1	2
	AP50A8	GASKET							1	
- 30	8114-1736	BELT, DRIVE							1	2
	8114-3355	BELT, DRIVE							1	1
	8261	BELT, DRIVE/SPARES/							1	3
	60-555046-1	PLATE, IDENT./AIR CONDITIONING/SUCTION DISCH/							1	2

CODES OF EFFECTIVITY

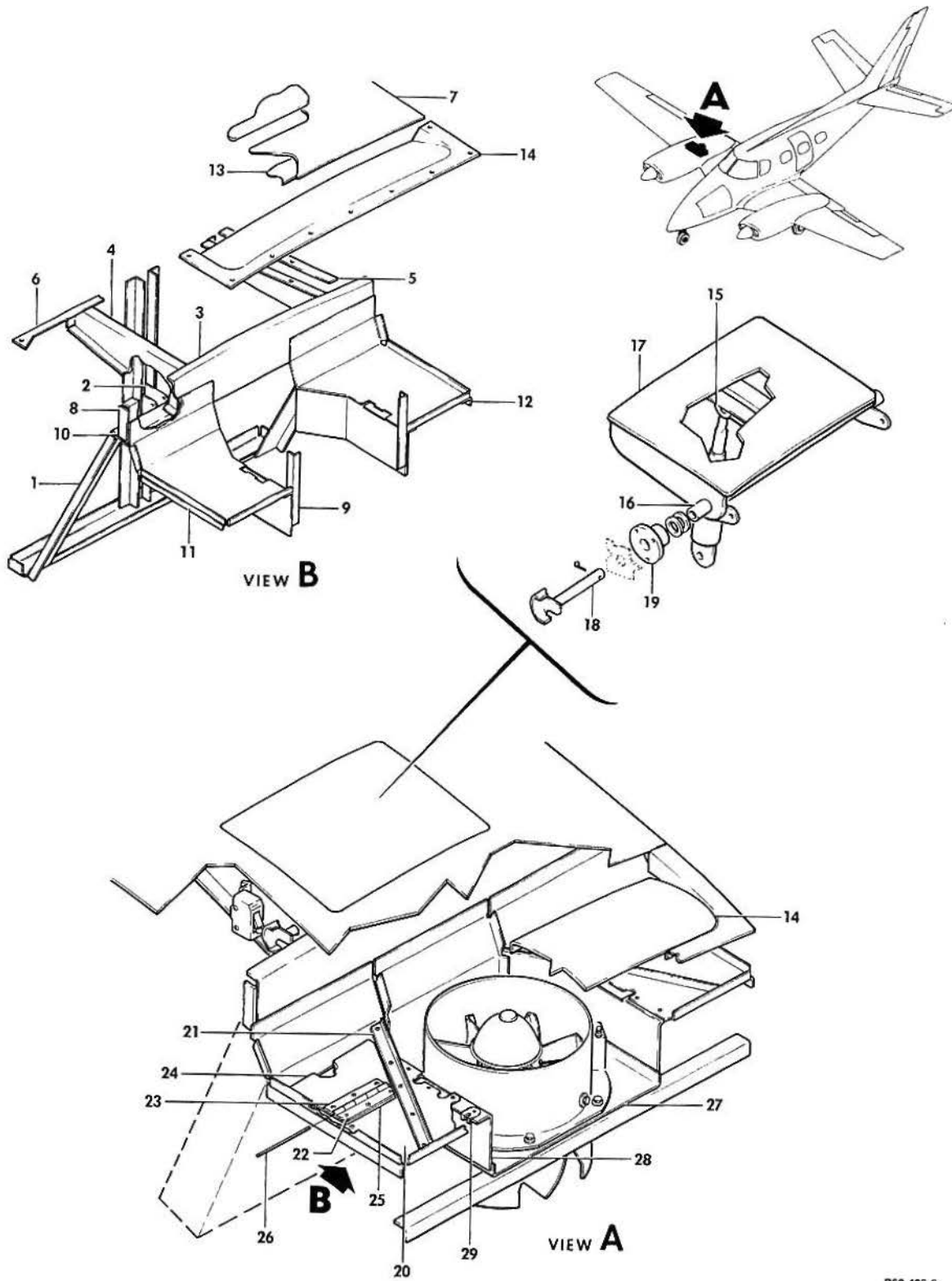
- |  |                                    |
|--|------------------------------------|
| 1 P-247 THRU P-506<br>P-508 AND P-510  | 2 P-507, P-509,<br>P-511 AND AFTER |
| 3 P-365 THRU P-506<br>P-508 THRU P-510 |                                    |



BEECHCRAFT  
DUKE B60  
ILLUSTRATED PARTS CATALOG

21-50-10  
CONDENSER SECTION

BEECHCRAFT  
DUKE B60  
ILLUSTRATED PARTS CATALOG

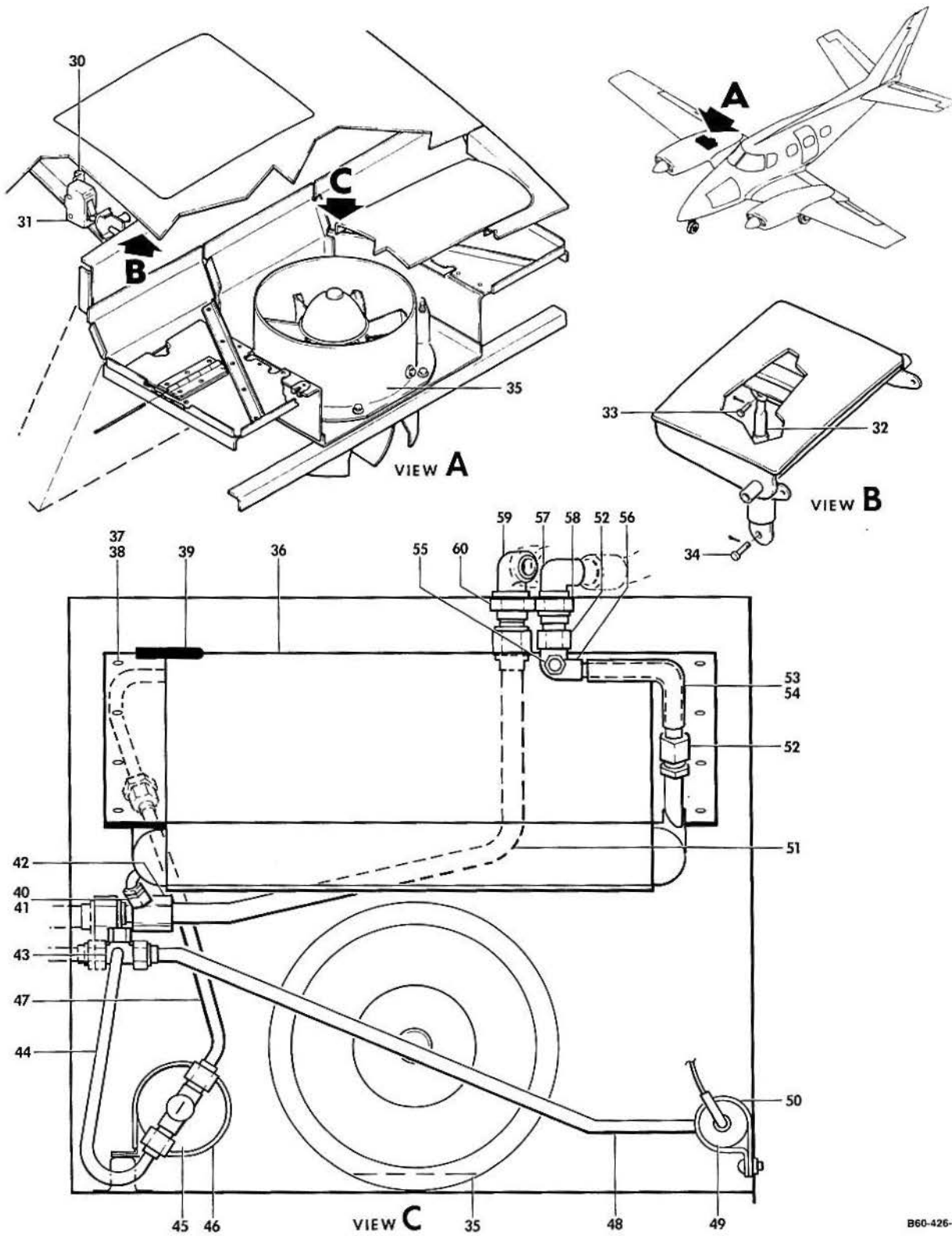


B60-426-6

BEECHCRAFT  
DUKE B60  
ILLUSTRATED PARTS CATALOG

GAMA/ATA CODE & INDEX NO.	PART NO.	DESCRIPTION	UNITS PER ASSY	USABLE ON CODE		
					1	2
50-10	60-555023-35	COMPARTMENT INSTL,AIR CONDITIONER CONDENSER . . . . . /PROVISIONS/	NP			
	60-555023-37	COMPARTMENT INSTL,AIR CONDITIONER CONDENSER . . . . .	NP			
- 1	60-555023-3	. ANGLE,LH. . . . .	1			
	60-555023-4	. ANGLE,RH. . . . .	1			
	MS35489-4	. GROMMET . . . . .	2			
- 2	60-555023-7	. TAB,AIR SCOOP ACTUATOR ATTACH . . . . .	2			
- 3	60-555023-1	. FORMER . . . . .	1			
- 4	60-555023-9	. SUPPORT,LH. . . . .	1			
	60-555023-10	. SUPPORT,RH. . . . .	1			
- 5	60-555023-33	. FILLER. . . . .	2			
- 6	60-555023-31	. FILLER. . . . .	1			
- 7	60-555023-19	. SKIN. . . . .	1			
- 8	60-555023-15	. ANGLE,LH. . . . .	1			
	60-555023-16	. ANGLE,RH. . . . .	1			
- 9	60-555023-11	. ANGLE,LH. . . . .	1			
	60-555023-12	. ANGLE,RH. . . . .	1			
- 10	60-555023-13	. ANGLE . . . . .	1			
- 11	60-555023-25	. ANGLE . . . . .	1			
- 12	60-555023-27	. ANGLE . . . . .	1			
- 13	60-555023-21	. STIFFENER . . . . .	1			
- 14	60-555025-1	. RAMP,AIR. . . . .	1			
	60-555024-601	. SCOOP ASSY,CONDENSER COMPARTMENT. . . . .	1			
- 15	60-555024-3	. ANGLE,LH. . . . .	1			
	60-555024-4	. ANGLE,RH. . . . .	1			
- 16	60-555024-9	. WELD ASSY,DOOR HINGE. . . . .	1			
- 17	60-555024-11	. DOOR. . . . .	1			
- 18	60-555030	. CAM ASSY. . . . .	2			
- 19	60-555026	. BEARING . . . . .	2			
		/ATTACHING PARTS/				
	13000CA-832	. NUTPLATE. . . . .	6			
	NAS220-9	. SCREW . . . . .	6			
	AN960-8	. WASHER. . . . .	10			
		+				
	60-555028-9	. WEB ASSY,PLENUM CHAMBER INBD. . . . .	1			
	60-555028	. WEB ASSY,PLENUM CHAMBER OUTBD . . . . .	1			
- 20	60-555028-3	. WEB,LH. . . . .	1			
	60-555028-4	. WEB,RH. . . . .	1			
- 21	60-555028-7	. ANGLE,LH. . . . .	1			
	60-555028-8	. ANGLE,RH. . . . .	1			
- 22	60-555028-13	. HINGE,HALF. . . . .	1			
	60-555028-17	. DOOR ASSY,LH. . . . .	1			
	60-555028-18	. DOOR ASSY,RH. . . . .	1			
- 23	60-555028-15	. HINGE,HALF. . . . .	1			
- 24	60-555028-19	. DOOR. . . . .	1			
- 25	60-555028-21	. SHIM. . . . .	1			
- 26	105774CZE00300	. PIN,HINGE . . . . .	1			
	60-555028-11	. SUPPORT ASSY,PLENUM CHAMBER . . . . .	1			
- 27	60-555028-1	. SUPPORT . . . . .	1			
- 28	60-555028-5	. SIDE,LH . . . . .	1			
	60-555028-6	. SIDE,RH . . . . .	1			
- 29	130290-1	. NUT ASSY,CLIP . . . . .	12			

BEECHCRAFT  
DUKE B60  
ILLUSTRATED PARTS CATALOG



B60-426-7



B E C H C R A F T  
DUKE B60  
I L L U S T R A T E D P A R T S C A T A L O G

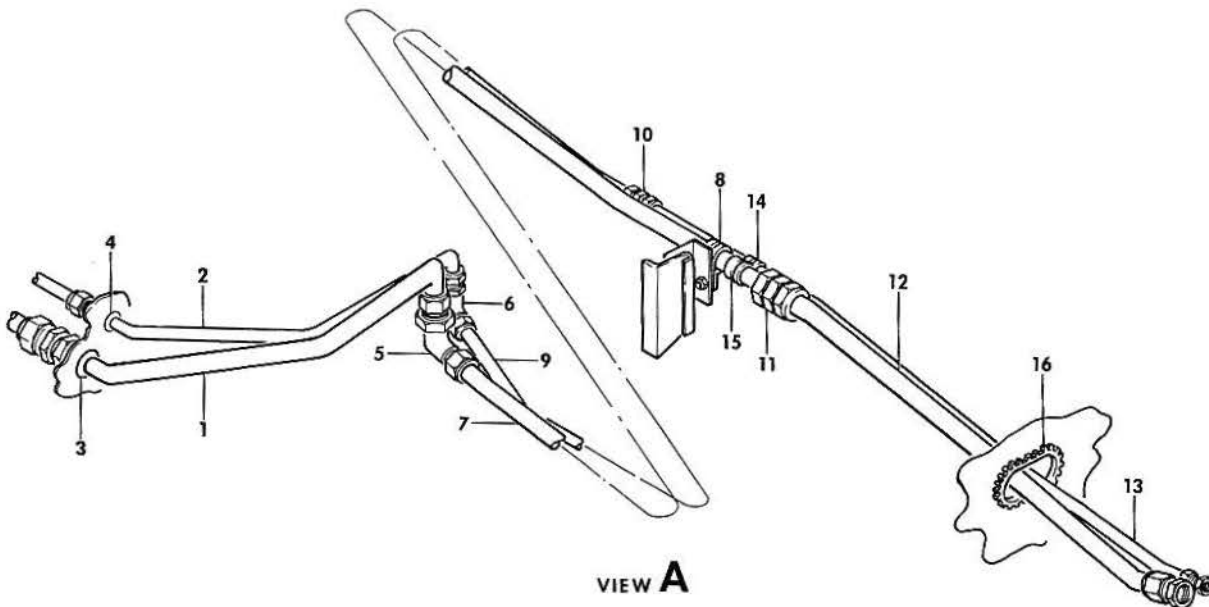
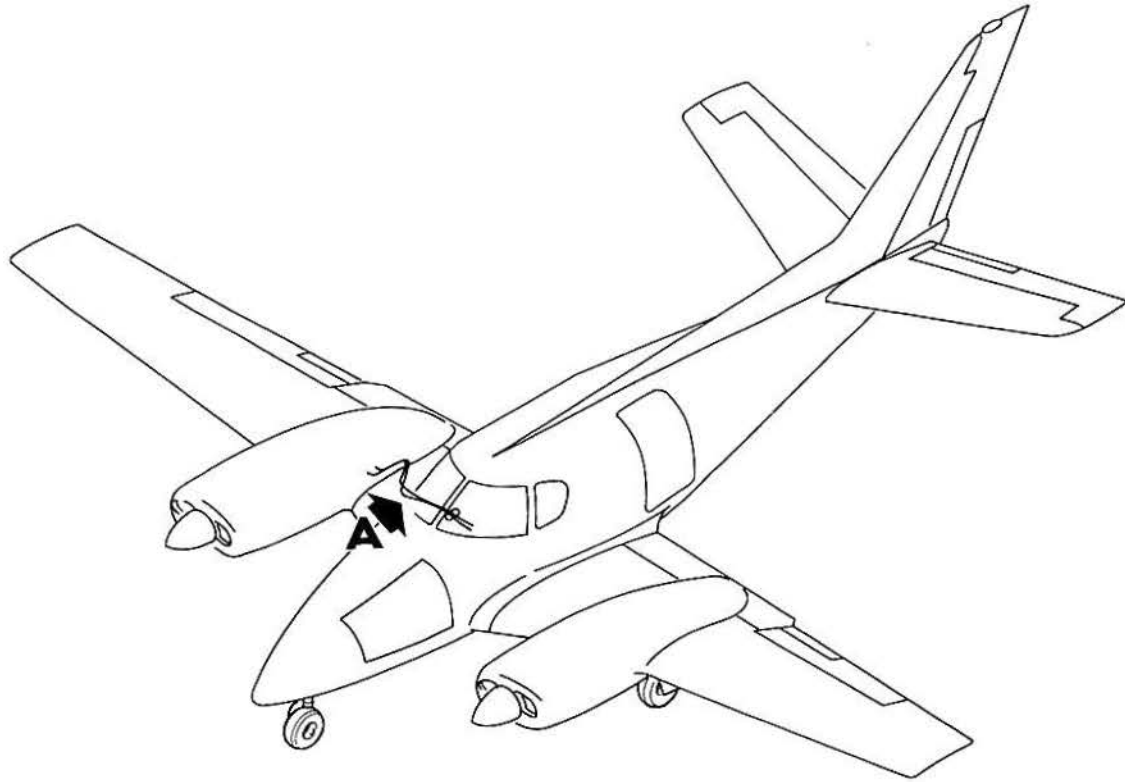
GAMA/ATA CODE & INDEX NO.	PART NO.	DESCRIPTION							UNITS PER ASSY	USABLE ON CODE
		1	2	3	4	5	6	7		
50-10 - 30	60-555031-1	.	.	.	.	.	.	.	1	
	60-555031-2	.	.	.	.	.	.	.	1	
	MS35206-244	.	.	.	.	.	.	.	32	
	AN960-8	.	.	.	.	.	.	.	10	
	130909N28	.	.	.	.	.	.	.	10	
		*								
- 31	BZ7RWT822	.	.	.	.	.	.	.	2	
	AN515-6R16	.	.	.	.	.	.	.	4	
	AN936B6	.	.	.	.	.	.	.	4	
	MS21042L06	.	.	.	.	.	.	.	4	
		*								
- 32	60-389027	.	.	.	.	.	.	.	1	
		/ATTACHING PARTS/								
- 33	MS20392-2C13	.	.	.	.	.	.	.	1	
	AN960-10L	.	.	.	.	.	.	.	3	
	MS24665-132	.	.	.	.	.	.	.	2	
- 34	MS20392-2C35	.	.	.	.	.	.	.	2	
		*								
- 35	60-384006	.	.	.	.	.	.	.	1	
		/ATTACHING PARTS/								
	MS35207-263	.	.	.	.	.	.	.	6	
		*								
	60-555029-31	.	.	.	.	.	.	.	NP	
- 36	60-555029-5	.	.	.	.	.	.	.	1	
		/ATTACHING PARTS/								
- 37	130909B12	.	.	.	.	.	.	.	8	
	AN960-10L	.	.	.	.	.	.	.	8	
		*								
- 38	60-384036	.	.	.	.	.	.	.	1	
	NAS697A3	.	.	.	.	.	.	.	8	
- 39	60-555029-17	.	.	.	.	.	.	.	2	
- 40	AN929-4	.	.	.	.	.	.	.	1	
- 41	AP50A4	.	.	.	.	.	.	.	1	
- 42	AN815-10D	.	.	.	.	.	.	.	1	
- 43	AN824-6D	.	.	.	.	.	.	.	1	
- 44	R 60-555029-43	.	.	.	.	.	.	.	1	
- 45	90-384019-1	.	.	.	.	.	.	.	1	
		/ATTACHING PARTS/								
- 46	MS21919DG40	.	.	.	.	.	.	.	2	
	MS35207-262	.	.	.	.	.	.	.	2	
		*								
- 47	R 60-555029-45	.	.	.	.	.	.	.	1	
- 48	60-555029-29	.	.	.	.	.	.	.	1	
- 49	60-389026-1	.	.	.	.	.	.	.	1	
		/ATTACHING PARTS/								
- 50	MS21919DG32	.	.	.	.	.	.	.	1	
	MS35207-260	.	.	.	.	.	.	.	1	
		*								
- 51	NAS697A3	.	.	.	.	.	.	.	1	
- 52	60-555029-25	.	.	.	.	.	.	.	1	
- 53	AP50A8	.	.	.	.	.	.	.	2	
- 54	60-555029-19	.	.	.	.	.	.	.	1	
- 55	131545S16-0030	.	.	.	.	.	.	.	1	
	P25-349A-450	.	.	.	.	.	.	.	1	
	MS28775-011	.	.	.	.	.	.	.	1	
- 56	60-555039-3	.	.	.	.	.	.	.	1	
- 57	AN833-8	.	.	.	.	.	.	.	1	
- 58	AN924-8	.	.	.	.	.	.	.	1	
	AN960-1216	.	.	.	.	.	.	.	1	
- 59	AN833-10	.	.	.	.	.	.	.	1	
- 60	AN924-10	.	.	.	.	.	.	.	1	
	AN960-1416	.	.	.	.	.	.	.	1	



BEECHCRAFT  
DUKE B60  
ILLUSTRATED PARTS CATALOG

21-50-20  
AIR CONDITIONING WING PLUMBING

BEECHCRAFT  
DUKE B60  
ILLUSTRATED PARTS CATALOG



960-428-6

FIGURE 50-20.AIR CONDITIONING WING PLUMBING

B E E C H C R A F T  
DUKE B60  
I L L U S T R A T E D P A R T S C A T A L O G

GAMA/ATA CODE & INDEX NO.	PART NO.	DESCRIPTION							UNITS PER ASSY	USABLE ON CODE
		1	2	3	4	5	6	7		
50-20	60-555034-27	AIR CONDITIONING PLUMBING INSTL,WING.								NP
- 1	60-555034-1	. TUBE ASSY . . . . .								1
- 2	60-555034-3	. TUBE ASSY . . . . .								1
- 3	MS35489-18	. GROMMET . . . . .								1
- 4	MS35489-12	. GROMMET . . . . .								1
- 5	AN833-10D	. ELBOW . . . . .								1
		/ATTACHING PARTS/								
	AN924-10D	. NUT . . . . .								1
	AN960-1416	. WASHER . . . . .								1
		*-----*								
- 6	AN833-6D	. ELBOW . . . . .								1
		/ATTACHING PARTS/								
	R AN924-6D	. NUT . . . . .								1
	AN960-916	. WASHER . . . . .								1
		*-----*								
- 7	60-555034-21	. TUBE ASSY . . . . .								1
		/ATTACHING PARTS/								
- 8	MS21919DG10	. CLAMP . . . . .								2
	NAS221-8	. SCREW . . . . .								2
	AN960-10	. WASHER . . . . .								2
	130909N29	. NUT . . . . .								2
		*-----*								
- 9	60-555034-31	. TUBE ASSY . . . . .								1
- 10	AN815-6D	. UNION . . . . .								1
- 11	AN815-10D	. UNION . . . . .								1
- 12	60-555034-23	. TUBE ASSY . . . . .								1
- 13	60-555034-25	. TUBE ASSY . . . . .								1
		/ATTACHING PARTS/								
- 14	MS21919DG6	. CLAMP . . . . .								1
- 15	MS21919DG10	. CLAMP . . . . .								2
	NAS221-8	. SCREW . . . . .								2
	AN960-10	. WASHER . . . . .								2
	130909N29	. NUT . . . . .								2
		*-----*								
- 16	60-555034-17	. GROMMET . . . . .								1

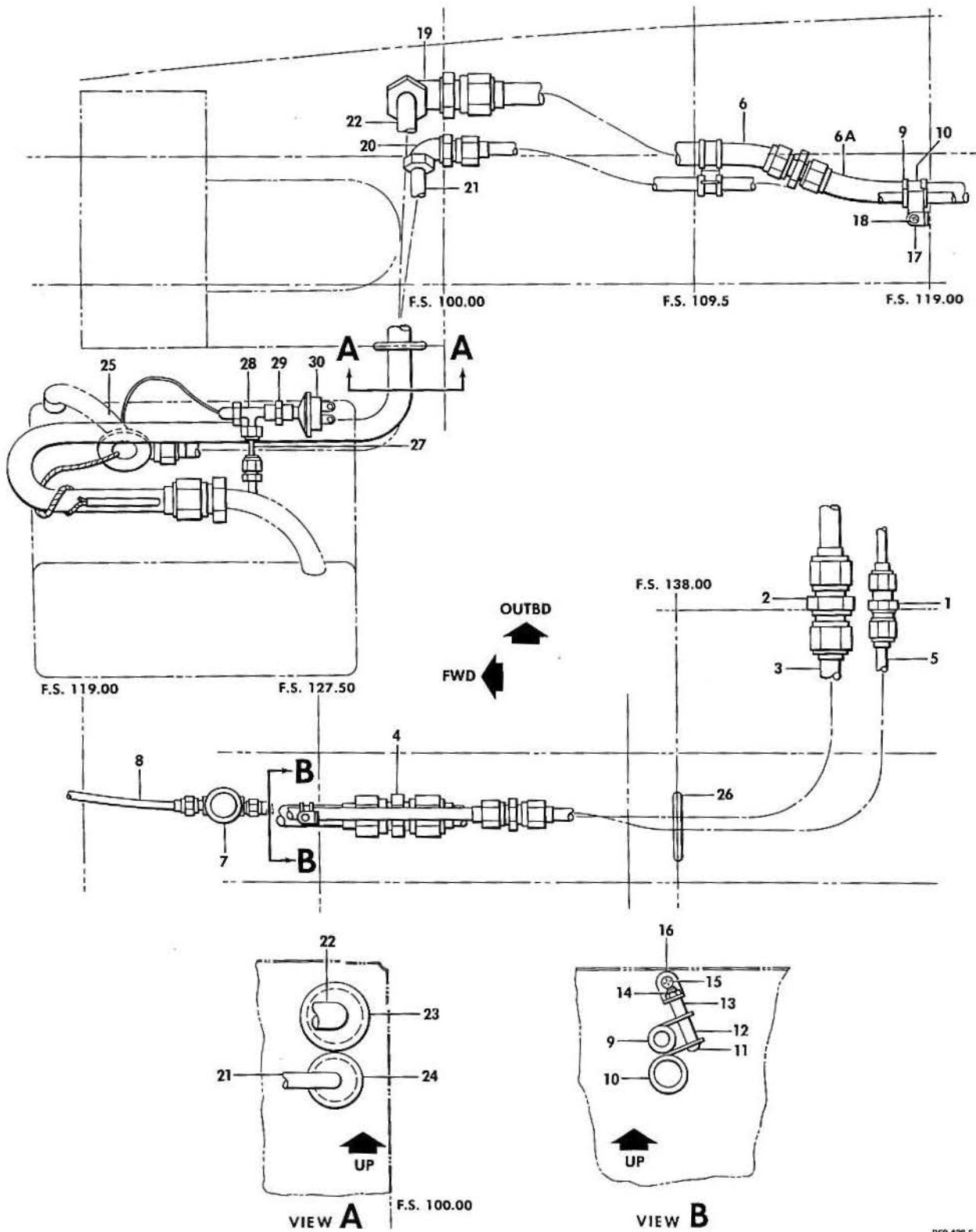
NOTE USE SECO 7A-4,7A-6,7A-8 OR 7A-10 GASKETS  
AS REQUIRED ON PLUMBING FITTINGS.



BEECHCRAFT  
DUKE B60  
ILLUSTRATED PARTS CATALOG

21-50-30  
AIR CONDITIONING FUSELAGE PLUMBING

BEECHCRAFT  
DUKE B60  
ILLUSTRATED PARTS CATALOG



B60-428-5



B E E C H C R A F T  
DUKE B60  
I L L U S T R A T E D P A R T S C A T A L O G

GAMA/ATA CODE & INDEX NO.	PART NO.	DESCRIPTION							UNITS PER ASSY	USABLE ON CODE
		1	2	3	4	5	6	7		
50-30	60-555015-21	AIR	COND	ITIONING	PLUMBING	INSTL,	FUSELAGE.	NP	2	
	60-555015-23	AIR	COND	ITIONING	PLUMBING	INSTL,	FUSELAGE.	NP	1	
- 1	AN832-6D	. UNION	.	.	.	.	.	1		
		/ATTACHING PARTS/								
	AN960-916	. WASHER.	.	.	.	.	.	2		
		*-----*								
	M4009-20	. SWITCH,PRESSURE	.	.	.	.	.	1	2	
		/ATTACHING PARTS/								
	AN924-6D	. NUT	.	.	.	.	.	2		
		*-----*								
- 2	AN832-10D	. UNION	.	.	.	.	.	1		
		/ATTACHING PARTS/								
	AN960-1416	. WASHER.	.	.	.	.	.	2		
	AN924-10D	. NUT	.	.	.	.	.	2		
		*-----*								
- 3	60-555015-5	. TUBE ASSY	.	.	.	.	.	1		
- 4	AN815-10D	. UNION	.	.	.	.	.	2		
- 5	60-555015-27	. TUBE ASSY	.	.	.	.	.	1		
- 6	60-555015-33	. TUBE ASSY	.	.	.	.	.	1		
- 6A	60-555015-31	. TUBE ASSY	.	.	.	.	.	1		
- 7	A17001	. GLASS,SIGHT	.	.	.	.	.	1		
- 8	60-555015-29	. TUBE ASSY	.	.	.	.	.	1		
		/ATTACHING PARTS/								
- 9	MS21919DG6	. CLAMP	.	.	.	.	.	3		
- 10	MS21919DG10	. CLAMP	.	.	.	.	.	3		
- 11	AN515-8R24	. SCREW	.	.	.	.	.	1		
- 12	NAS43DD3-40	. SPACER.	.	.	.	.	.	1		
- 13	NAS43DD3-24	. SPACER.	.	.	.	.	.	1		
- 14	130909N28	. NUT	.	.	.	.	.	4		
- 15	MS35206-244	. SCREW	.	.	.	.	.	1		
- 16	AN743-12	. BRACKET	.	.	.	.	.	1		
- 17	AN743-13	. BRACKET	.	.	.	.	.	2		
- 18	MS35206-245	. SCREW	.	.	.	.	.	2		
		*-----*								
- 19	AN833-10D	. ELBOW	.	.	.	.	.	1		
		/ATTACHING PARTS/								
	AN960-1416	. WASHER.	.	.	.	.	.	2		
	AN924-10D	. NUT	.	.	.	.	.	2		
		*-----*								
- 20	AN833-6D	. ELBOW	.	.	.	.	.	1		
		/ATTACHING PARTS/								
	AN960-916	. WASHER.	.	.	.	.	.	2		
	AN924-6D	. NUT	.	.	.	.	.	2		
		*-----*								
- 21	60-555015-25	. TUBE ASSY	.	.	.	.	.	1		
- 22	60-555015-1	. TUBE ASSY	.	.	.	.	.	1		
- 23	MS35489-18S	. GROMMET	.	.	.	.	.	1		
- 24	MS35489-12S	. GROMMET	.	.	.	.	.	1		
- 25	70226-203	. VALVE,EXPANSION	.	.	.	.	.	1		
- 26	60-555015-17	. GROMMET	.	.	.	.	.	1		
- 27	60-555015-35	. TUBE ASSY	.	.	.	.	.	1	1	
- 28	AN826-4D	. TEE	.	.	.	.	.	1	1	
- 29	AN910-1D	. COUPLING.	.	.	.	.	.	1	1	
- 30	M4009-20	. SWITCH,PRESSURE	.	.	.	.	.	1	1	
	60-5018-1 S	. KIT,MODIFICATION/LOW PRESSURE SWITCH/	.	.	.	.	.	1	2	

CODES OF EFFECTIVITY

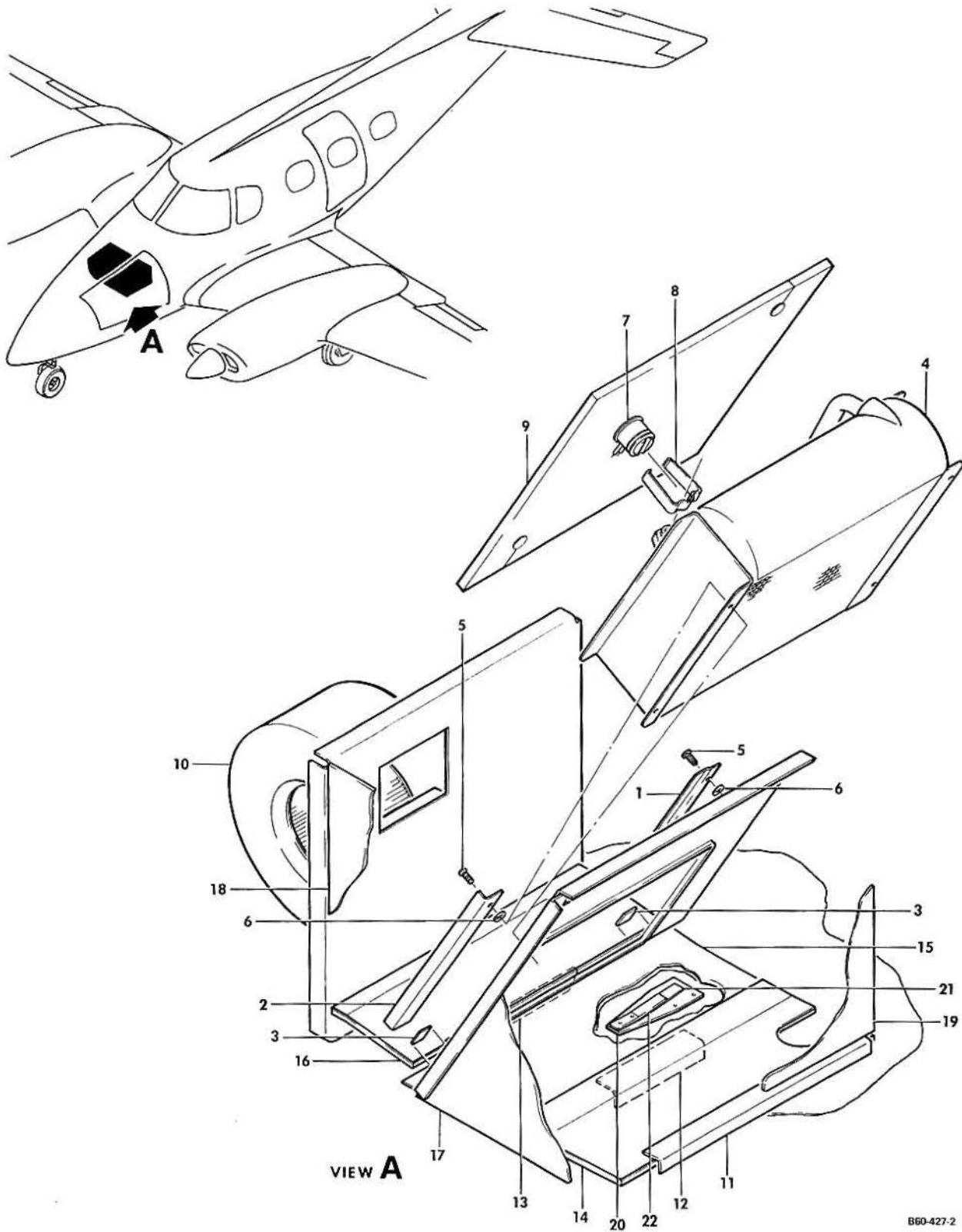
1 P-275 AND AFTER      2 P-247 THRU P-274



BEECHCRAFT  
DUKE B60  
ILLUSTRATED PARTS CATALOG

21-50-40  
EVAPORATOR SECTION

BEECHCRAFT  
DUKE B60  
ILLUSTRATED PARTS CATALOG



B E E C H C R A F T  
DUKE B60  
I L L U S T R A T E D P A R T S C A T A L O G

GAMA/ATA CODE & INDEX NO.	PART NO.	DESCRIPTION	UNITS PER ASSY	USABLE ON CODE
		1 2 3 4 5 6 7		
50-40	60-555014-43	EVAPORATOR INSTL,AIR CONDITIONING/INSULATED/	NP	
	60-555014-45	EVAPORATOR INSTL,AIR CONDITIONING	NP	
- 1	60-555014-1	. RETAINER,EVAPORATOR	1	
- 2	60-555014-3	. RETAINER,EVAPORATOR	1	
	130068832	. NUTPLATE	2	
- 3	60-555014-5	. SPACER	2	
- 4	115-384002	. COIL ASSY	1	
		/ATTACHING PARTS/		
- 5	AN525-832R10	. SCREW	2	
- 6	NAS43DD3-6	. SPACER	2	
		*-----*		
- 7	20425F21-236-100	. THERMOSTAT	1	
		/ATTACHING PARTS/		
- 8	50097-1	. CLAMP,THERMOSTAT	1	
		*-----*		
- 9	60-555014-13	. FILTER	1	
- 10	60-384002-5	. BLOWER ASSY/SEE CHAPTER 21-20-20/	1	1
	101-384135-1	. BLOWER ASSY/SEE CHAPTER 21-20-20/	1	2
- 11	60-555014-21	. ANGLE	1	
- 12	60-555014-47	. ANGLE	1	
- 13	60-555014-37	. ANGLE	1	
- 14	60-555014-15	. PAN ASSY	1	
		/ATTACHING PARTS/		
	130290-3	. NUT,CLIP	7	
	AN525-8R6	. SCREW	11	
		*-----*		
	60-555014-17	. PAN	1	
	60-555014-19	. INSULATION	1	
- 15	60-555014-25	. PAN ASSY	1	
		/ATTACHING PARTS/		
	130290-1	. NUT,CLIP	2	
	AN525-8R6	. SCREW	11	
		*-----*		
	60-555014-27	. PAN	1	
	60-555014	. INSULATION	1	
- 16	60-555014-31	. PANEL ASSY	1	
		/ATTACHING PARTS/		
	130290-3	. NUT,CLIP	7	
	AN525-8R6	. SCREW	11	
		*-----*		
	60-555014-33	. PAN	1	
	60-555014-35	. INSULATION	1	
- 17	60-555014-39	. INSULATION	1	
- 18	60-555014-41	. INSULATION	1	
- 19	60-555014-23	. INSULATION	1	
- 20	60-555014-7	. DOUBLER	1	
- 21	60-555014-11	. SPRING	1	
- 22	60-555014-9	. RETAINER	1	

CODES OF EFFECTIVITY

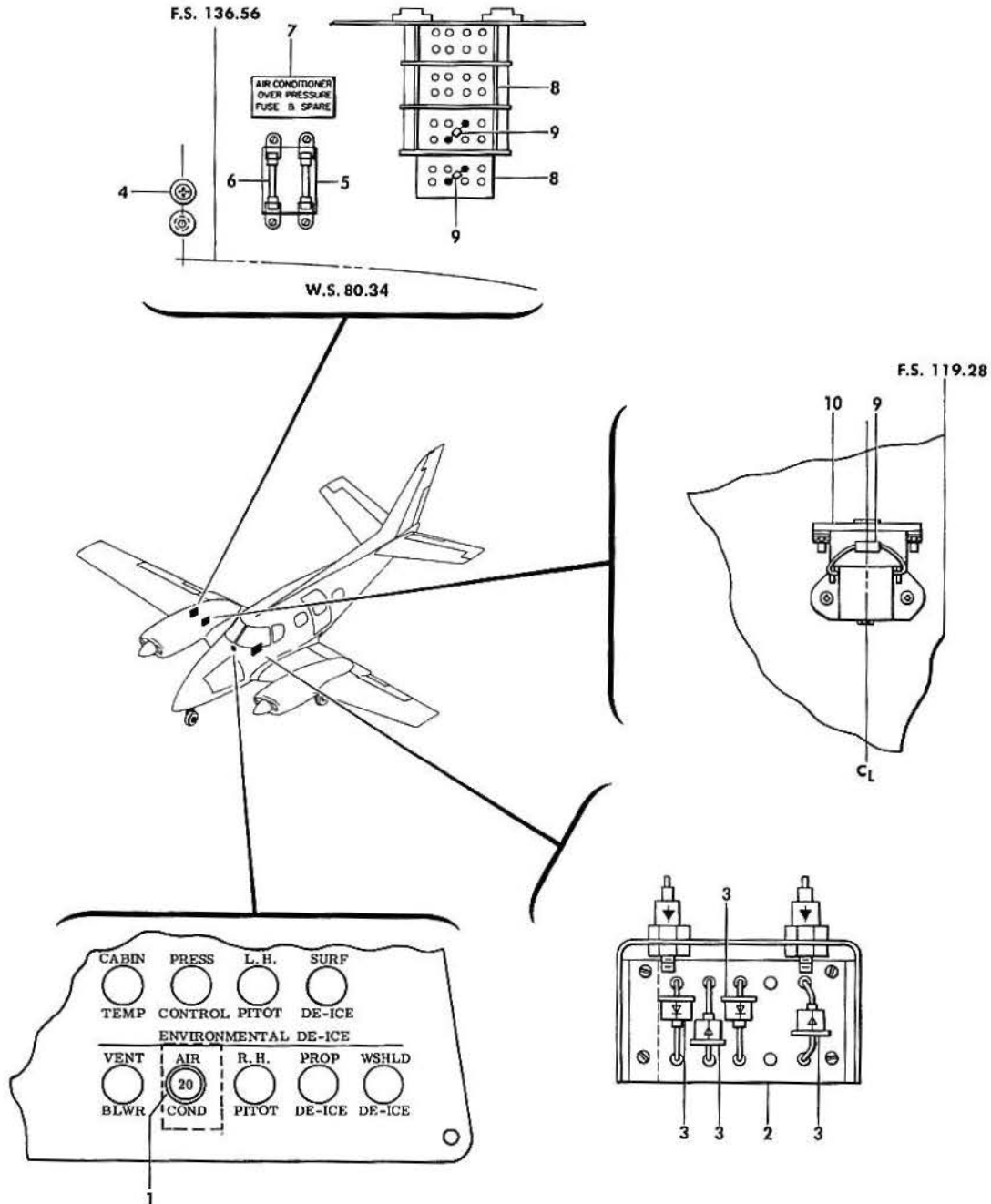
1 P-247 THRU P-536      2 P-537 AND AFTER



BEECHCRAFT  
DUKE B60  
ILLUSTRATED PARTS CATALOG

21-50-50  
AIR CONDITIONER ELECTRICAL

BEECHCRAFT  
DUKE B60  
ILLUSTRATED PARTS CATALOG



860-426-5



B E E C H C R A F T  
DUKE B60  
I L L U S T R A T E D P A R T S C A T A L O G

GAMA/ATA CODE & INDEX NO.	PART NO.	DESCRIPTION							UNITS PER ASSY	USABLE ON CODE
		1	2	3	4	5	6	7		
50-50	60-364023-3	ELECTRICAL EQUIPMENT INSTL,AIR CONDITIONER. . . . .							NP	
	60-364023-5	ELECTRICAL EQUIPMENT INSTL,AIR CONDITIONER. . . . .							NP	
- 1	D7271-8-20	. CIRCUIT BREAKER,AIR CONDITIONER . . . . .							1	
- 2	15032	. TERMINAL BOARD/AIR CONDITIONING DIODE/. . . . .							1	
- 3	MR1031A	. DIODE,TERMINAL BOARD. . . . .							4	
	60-5018-1 S	. KIT,MODIFICATION/LOW PRESSURE SWITCH/. . . . .							1	1
- 4	3742	. RESISTOR/AIR CONDITIONER OVER PRESSURE/. . . . .							1	
		/ATTACHING PARTS/								
	AN515-8R36	. SCREW . . . . .							1	
	2153	. WASHER,FIBER. . . . .							2	
	NAS697A08	. NUTPLATE. . . . .							1	
		*-----*								
	106242B	. COVER,TUBE/EXPOSED LEADS/. . . . .							AR	
- 5	R 4522	. HOLDER,FUSE/AIR CONDITIONING OVER PRESSURE/. . . . .							1	
		/ATTACHING PARTS/								
	AN507-6R12	. SCREW . . . . .							2	
	NAS697A06	. NUTPLATE. . . . .							2	
		*-----*								
- 6	R ABC-3	. FUSE. . . . .							2	
- 7	60-364058	. DECAL . . . . .							1	2
- 8	50-380048-1	. RELAY . . . . .							2	
		/ATTACHING PARTS/								
	AN515-6R36	. SCREW . . . . .							2	
	100696D08-05-018	. SPACER. . . . .							2	
	AN960-6L	. WASHER. . . . .							2	
		*-----*								
- 9	IN4005	. DIODE . . . . .							3	
	291VC	. COVER,VINYL/EXPOSED DIODE LEADS/. . . . .							AR	
- 10	60-41HZ01A	. RELAY,CONDENSER BLOWER. . . . .							1	
		/ATTACHING PARTS/								
	MS35207-263	. SCREW . . . . .							2	
	K1000-3	. NUTPLATE. . . . .							2	
	AN960-10L	. WASHER. . . . .							2	
	AN960-10	. WASHER. . . . .							2	
		*-----*								

NOTE SEE ELECTRICAL WIRING MANUAL FOR COMPLETE ELECTRICAL SYSTEM

CODES OF EFFECTIVITY

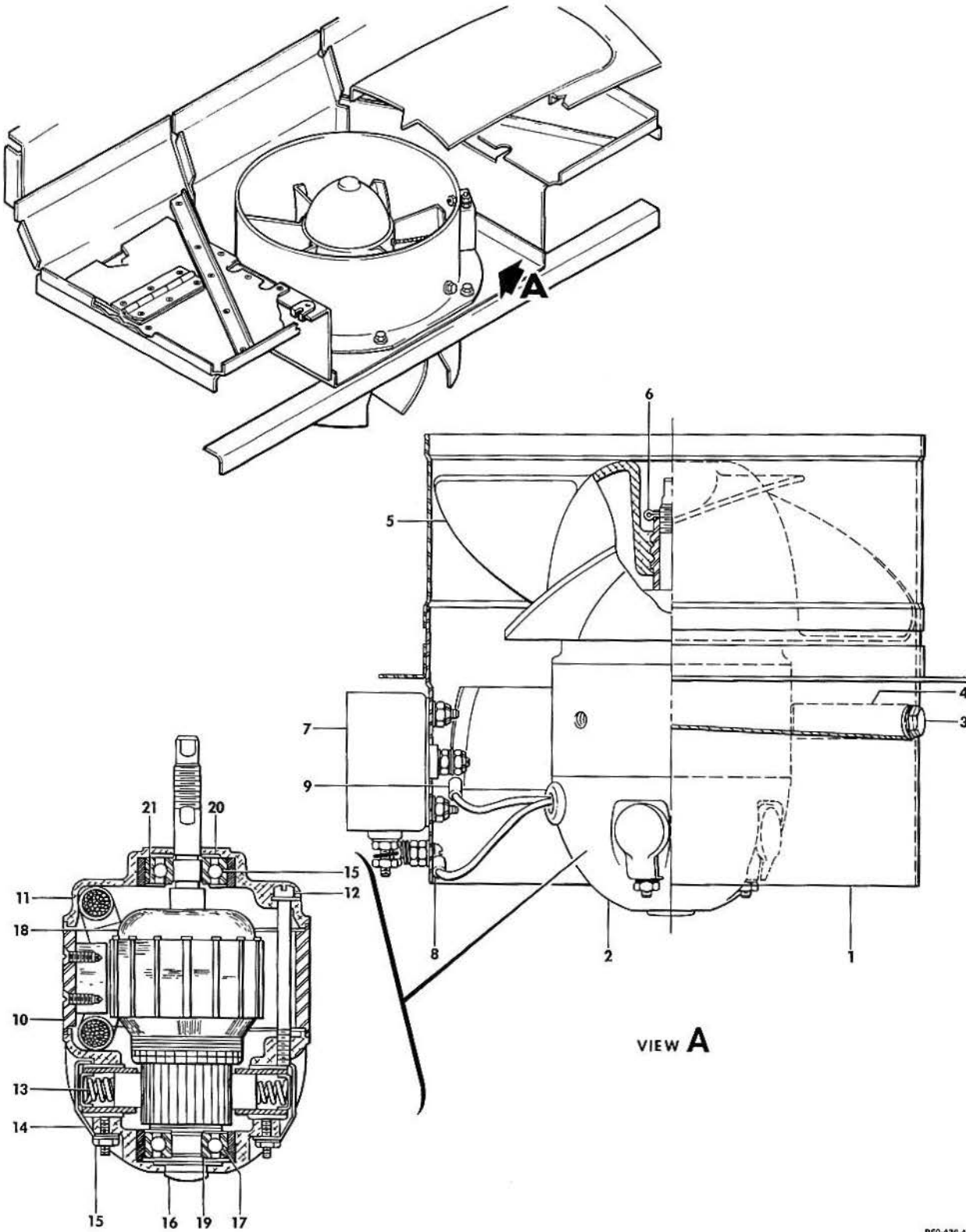
1 P-247 THRU P-274      2 P-275 AND AFTER



BEECHCRAFT  
DUKE B60  
ILLUSTRATED PARTS CATALOG

21-50-60  
CONDENSER BLOWER

BEECHCRAFT  
DUKE B60  
ILLUSTRATED PARTS CATALOG



860-426-4

B E E C H C R A F T  
DUKE B60  
I L L U S T R A T E D P A R T S C A T A L O G

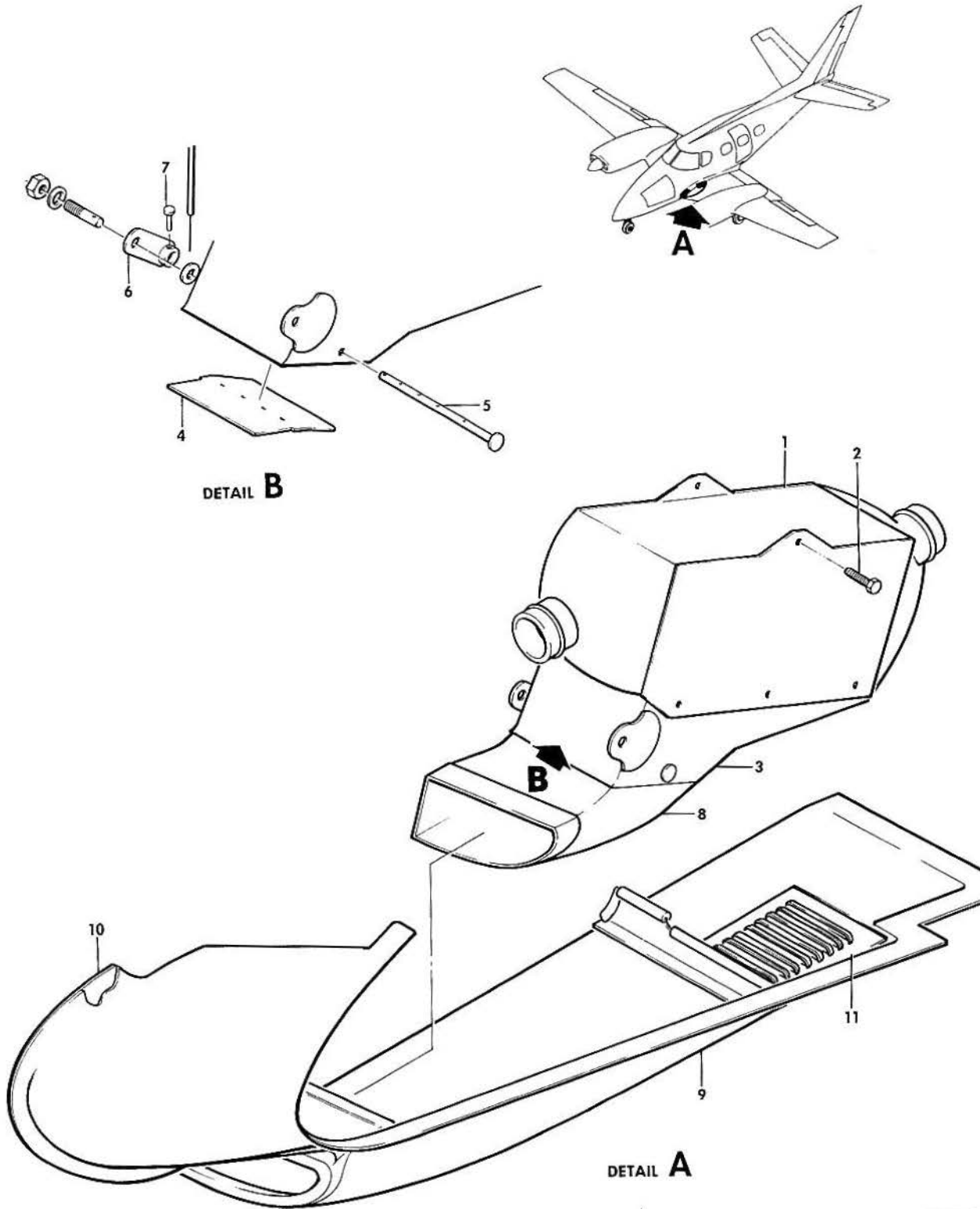
GAMA/ATA CODE & INDEX NO.	PART NO.	DESCRIPTION							UNITS PER ASSY	USABLE ON CODE
		1	2	3	4	5	6	7		
50-60	60-384006	BLOWER, CONDENSER.	.	.	.	.	.	.	1	
- 1	A2781-513	. HOUSING AND IDENTIFICATION PLATE.	.	.	.	.	.	.	1	
- 2	M3416DA	. MOTOR ASSY.	.	.	.	.	.	.	1	
		/ATTACHING PARTS/								
- 3	AN4H20A	. BOLT.	.	.	.	.	.	.	3	
	AN960-416	. WASHER.	.	.	.	.	.	.	3	
- 4	1081-15	. SPACER, SLEEVE	.	.	.	.	.	.	3	
		*-----*								
- 5	2190-15	. PROPELLER ASSY.	.	.	.	.	.	.	1	
		/ATTACHING PARTS/								
- 6	MS24665-13A	. PIN, COTTER.	.	.	.	.	.	.	1	
		*-----*								
- 7	2793-4	. FILTER, RADIO.	.	.	.	.	.	.	1	
		/ATTACHING PARTS/								
	MS20364-832C	. NUT	.	.	.	.	.	.	2	
		*-----*								
- 8	K393-2	. LUG, NEGATIVE TERMINAL	.	.	.	.	.	.	1	
- 9	K395-10	. LUG, POSITIVE TERMINAL	.	.	.	.	.	.	1	
- 10	2239-86	. STATOR AND END BELL ASSY.	.	.	.	.	.	.	1	
- 11	5801N-9	. END, BELL/SHAFT END/	.	.	.	.	.	.	1	
		/ATTACHING PARTS/								
- 12	K35G19	. SCREW	.	.	.	.	.	.	2	
	AN960-10L	. WASHER	.	.	.	.	.	.	2	
		*-----*								
- 13	420A12	. BRUSH	.	.	.	.	.	.	4	
- 14	417H3	. CAP, BRUSH	.	.	.	.	.	.	4	
		/ATTACHING PARTS/								
- 15	MS35649-282	. NUT	.	.	.	.	.	.	4	
	AN936B8	. WASHER	.	.	.	.	.	.	4	
		*-----*								
- 16	1506-3	. BUTTON, PLUG	.	.	.	.	.	.	1	
- 17	K271-200SSL	. BEARING, BALL	.	.	.	.	.	.	2	
- 18	3410L36	. ARMATURE	.	.	.	.	.	.	1	
- 19	K129-1	. SPRING, LOADING	.	.	.	.	.	.	1	
- 20	461	. SLINGER	.	.	.	.	.	.	1	
- 21	536-2	. SHIELD, BEARING	.	.	.	.	.	.	1	



B E E C H C R A F T  
DUKE B60  
I L L U S T R A T E D P A R T S C A T A L O G

21-60-01  
CABIN AIR TEMPERATURE CONTROL

BEECHCRAFT  
DUKE B60  
ILLUSTRATED PARTS CATALOG



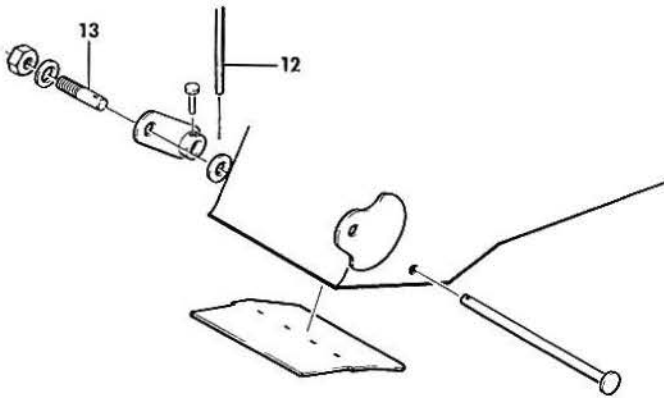
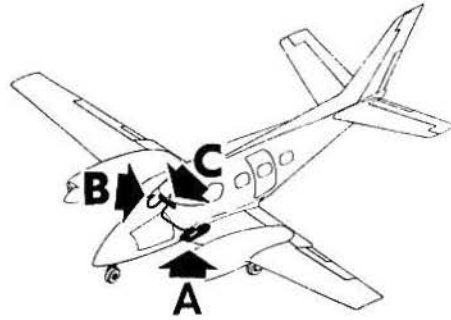
B60-417-5



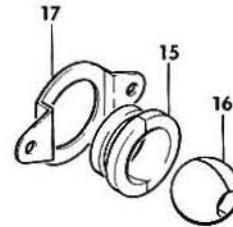
B E E C H C R A F T  
DUKE B60  
I L L U S T R A T E D P A R T S C A T A L O G

GAMA/ATA CODE & INDEX NO.	PART NO.	DESCRIPTION							UNITS PER ASSY	USABLE ON CODE
		1	2	3	4	5	6	7		
60-01	60-540013-1	EXCHANGER INSTL,LH HEAT	.	.	.	.	.	.	NP	
	60-540013-2	EXCHANGER INSTL,RH HEAT	.	.	.	.	.	.	NP	
	60-540021-1	EXCHANGER ASSY,LH HEAT	.	.	.	.	.	.	1	
	60-540021-2	EXCHANGER ASSY,RH HEAT	.	.	.	.	.	.	1	
	- 1	60-384001-1	EXCHANGER,LH HEAT	.	.	.	.	.	1	
		60-384001-2	EXCHANGER,RH HEAT	.	.	.	.	.	1	
			/ATTACHING PARTS/							
	- 2	AN3-4	BOLT	.	.	.	.	.	1	
			-----							
	- 3	60-540022-601	PLENUM,LH	.	.	.	.	.	1	
		60-540022-602	PLENUM,RH	.	.	.	.	.	1	
		/ATTACHING PARTS/								
	AN509-10R8	SCREW	.	.	.	.	.	4		
	130909B14	BOLT	.	.	.	.	.	4		
	AN960-10L	WASHER	.	.	.	.	.	1		
	AN960-10	WASHER	.	.	.	.	.	AR		
		-----								
- 4	60-540021-25	VALVE ASSY,LH	.	.	.	.	.	1		
	60-540021-26	VALVE ASSY,RH	.	.	.	.	.	1		
- 5	60-540021-33	SHAFT ASSY,LH AND RH	.	.	.	.	.	1		
		/ATTACHING PARTS/								
	AN515-4R	SCREW	.	.	.	.	.	3		
	MS21042L04	NUT	.	.	.	.	.	3		
		-----								
- 6	60-540021-19	ARM ASSY,LH	.	.	.	.	.	1		
	60-540021-20	ARM ASSY,RH	.	.	.	.	.	1		
		/ATTACHING PARTS/								
- 7	MS20392-1C17	PIN	.	.	.	.	.	1		
	MS24665-132	PIN,COTTER	.	.	.	.	.	1		
		-----								
- 8	60-540022-1	SCOOP,LH	.	.	.	.	.	1		
	60-540022-2	SCOOP,RH	.	.	.	.	.	1		
- 9	60-540023-603	SCOOP ASSY,LH HEAT EXCHANGER	.	.	.	.	.	1		
	60-540023-604	SCOOP ASSY,RH HEAT EXCHANGER	.	.	.	.	.	1		
		/ATTACHING PARTS/								
	MS24694C9	SCREW	.	.	.	.	.	2		
	MS24694C7	SCREW	.	.	.	.	.	6		
	MS24694C3	SCREW	.	.	.	.	.	11		
		-----								
	60-540023-15	BAFFLE,LH	.	.	.	.	.	1		
	60-540023-16	BAFFLE,RH	.	.	.	.	.	1		
- 10	60-540023-7	SEAL	.	.	.	.	.	1		
- 11	60-540023-5	VENT,LOUVERED	.	.	.	.	.	1		

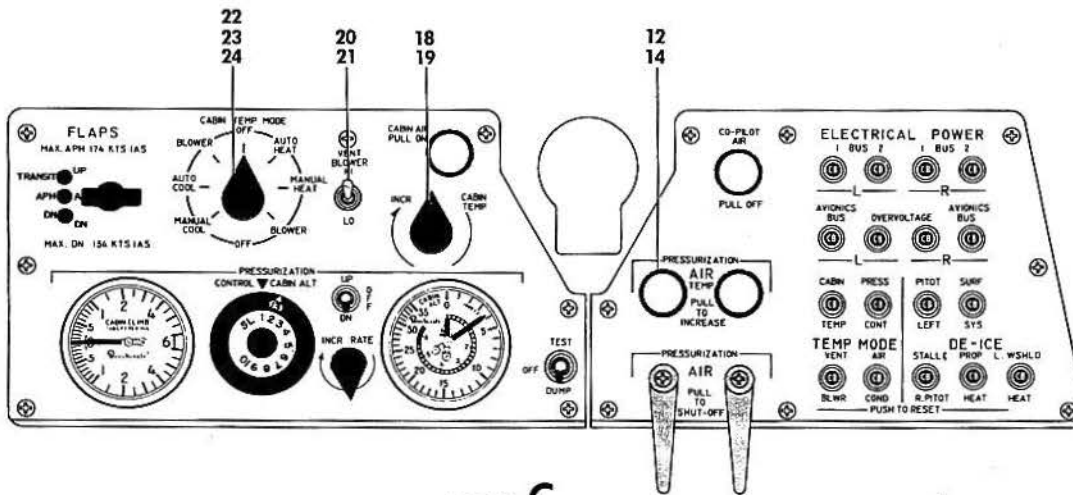
BEECHCRAFT  
DUKE 860  
ILLUSTRATED PARTS CATALOG



DETAIL A



DETAIL B



DETAIL C

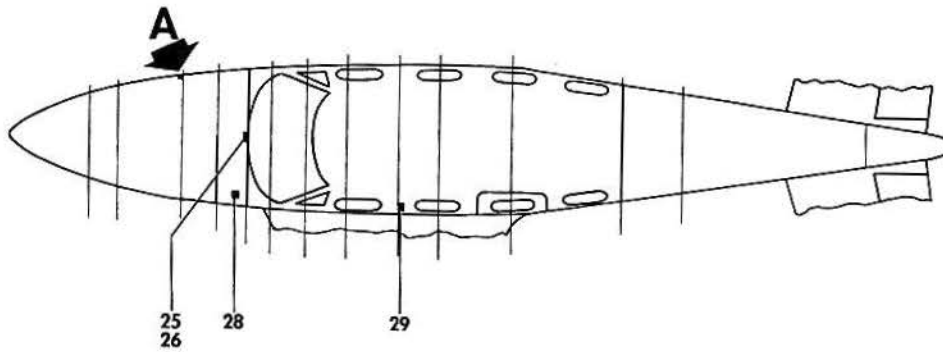
B60-417-6

B E E C H C R A F T  
DUKE 860  
I L L U S T R A T E D P A R T S C A T A L O G

GAMA/ATA CODE & INDEX NO.	PART NO.	DESCRIPTION							UNITS PER ASSY	USABLE ON CODE
		1	2	3	4	5	6	7		
60-01	60-540017	CONTROLS INSTL,CABIN AIR. . . . .							NP	
- 12	60-384026-11	. CONTROL ASSY,LH . . . . .							1	
	60-384026-7	. CONTROL ASSY,RH . . . . .							1	
		/ATTACHING PARTS/								
- 13	MS21919DG3	. CLAMP . . . . .							1	
	35-550520	. PIN . . . . .							1	
	108492510-016	. WASHER. . . . .							1	
	100696SZC004	. SPACER. . . . .							1	
	AN960-10L	. WASHER. . . . .							1	
	130909N29	. NUT . . . . .							1	
- 14	60-550076-3	. KNOB ASSY . . . . .							1	
	AN565A1032H4	. . SCREW,SET . . . . .							1	
- 15	112412	. GROMMET . . . . .							2	
- 16	112413-2	. HALF BALL . . . . .							2	
- 17	112436-6	. RETAINER. . . . .							1	
	60-324025-1	PANEL INSTL,SUB . . . . .							NP	
	60-324098-3	. CIRCUIT BOARD ASSY. . . . .							1	
- 18	0115	. . RHEOSTAT. . . . .							1	
- 19	60-324082-1	. . KNOB,RHEOSTAT . . . . .							1	
- 20	35-380053-1	. . SWITCH,VENT BLOWER. . . . .							1	
- 21	35-380052	. . KNOB,VENT BLOWER. . . . .							1	
- 22	60-364041-3	. . SWITCH,CABIN TEMPERATURE CONTROL. . . . .							1	
		/USED WITHOUT AIR CONDITIONER/								
- 23	60-364041-1	. . SWITCH,CABIN TEMPERATURE CONTROL. . . . .							1	
		/USED WITH AIRCONDITIONER/								
- 24	60-324082	. . KNOB,CABIN TEMPERATURE CONTROL SWITCH . . . . .							1	

NOTE SEE CHAPTER 39 FOR COMPLETE INSTRUMENT  
PANEL BREAKDOWN

BEECHCRAFT  
DUKE B60  
ILLUSTRATED PARTS CATALOG



B60-417-7

BEECHCRAFT  
DUKE B60  
ILLUSTRATED PARTS CATALOG

GAMA/ATA CODE & INDEX NO.	PART NO.	DESCRIPTION							UNITS PER ASSY	USABLE ON CODE
		1	2	3	4	5	6	7		
60-01 - 25	CYLZ9504	CONTROL BOX,CABIN TEMPERATURE . . . . .							1	
		/ATTACHING PARTS/								
	AN520-10R6	SCREW . . . . .							4	
	AN960-10	WASHER. . . . .							4	
	130909N29	NUT . . . . .							4	
*-----*										
- 26	60-324000-27	BRACKET,CABIN TEMPERATURE CONTROL BOX . . . . .							1	
		/ATTACHING PARTS/								
	MS35206-243	SCREW . . . . .							1	
	AN960-8L	WASHER. . . . .							1	
*-----*										
- 27	AYLF2336-2	SENSOR,OUTSIDE AIR TEMPERATURE. . . . .							1	
		/ATTACHING PARTS/								
	AN515-4R8	SCREW . . . . .							4	
	AN960-4L	WASHER. . . . .							4	
	MS21042L04	NUT . . . . .							4	
*-----*										
- 28	AYLF3001-1	SENSOR,HEATER DISCHARGE . . . . .							1	
		/ATTACHING PARTS/								
	R MS35206-230	SCREW . . . . .							4	
	AN960-6L	WASHER. . . . .							4	
	MS20995C32	LOCKWIRE. . . . .							AR	
	MK1000-06	NUTPLATE. . . . .							4	
*-----*										
- 29	60-364057-1	SENSOR ASSY,CABIN TEMPERATURE . . . . .							1	1
	60-364057-5	SENSOR ASSY,CABIN TEMPERATURE . . . . .							1	2
		/ATTACHING PARTS/								
	MS35206-232	SCREW . . . . .							4	
	AN960-6L	WASHER. . . . .							4	
*-----*										

CODES OF EFFECTIVITY

1 P-247 THRU P-264      2 P-265 AND AFTER

