

B E E C H C R A F T
DUKE B60
I L L U S T R A T E D P A R T S C A T A L O G

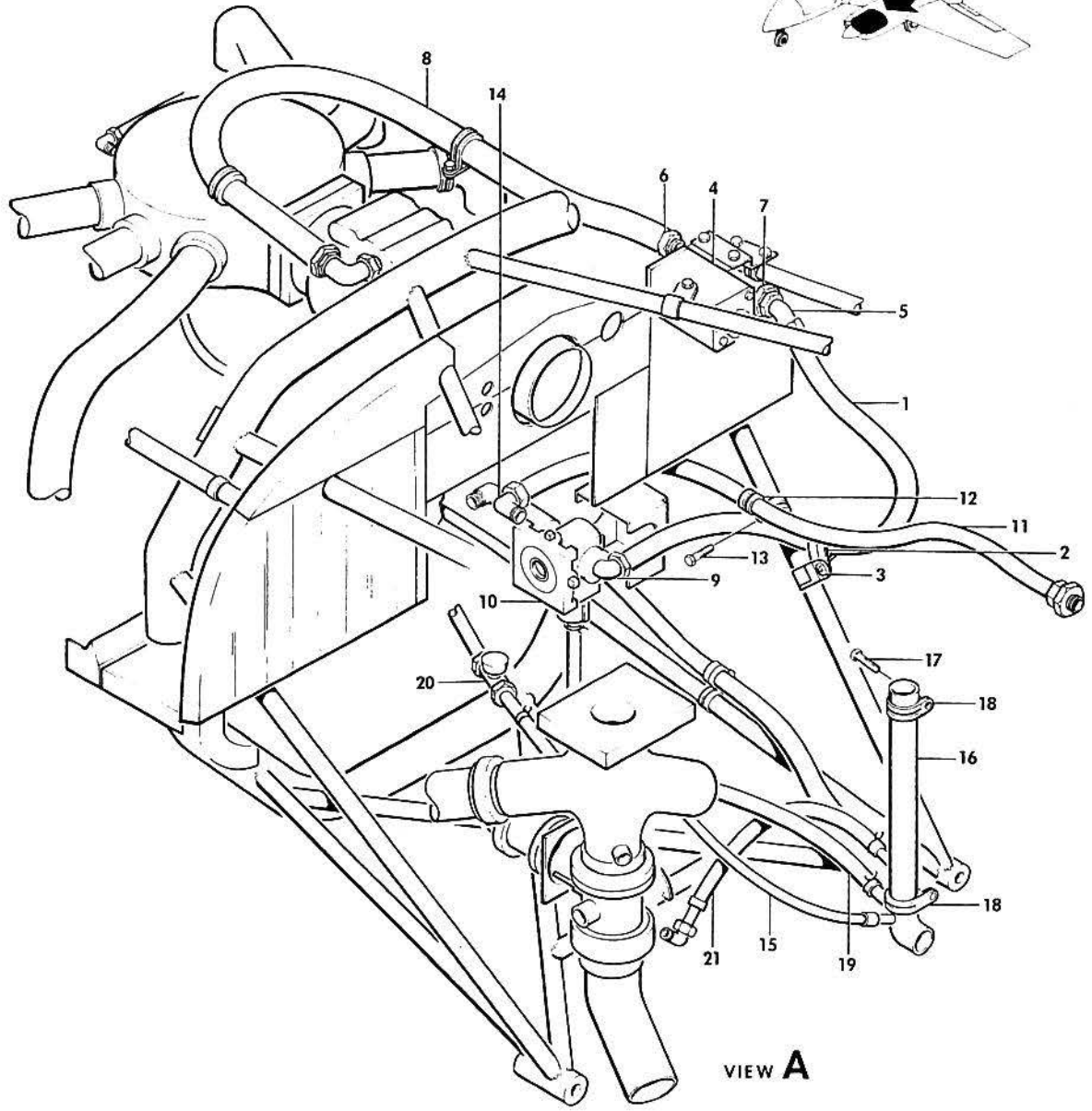
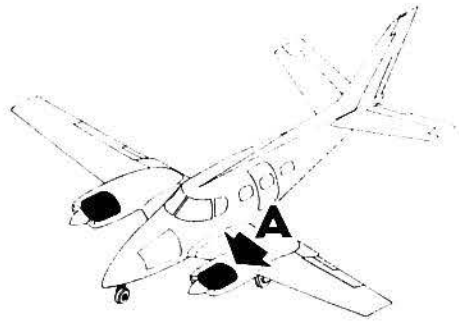
LIST OF PAGES & TABLE OF CONTENTS
FOR
CHAPTER 73-00-00 ENGINE FUEL SYSTEMS

SYS/SUB-SYS/ CHAP SECTION	PAGE NO.	EFFECTIVE DATE	TABLE OF CONTENTS
73-00-00	1	03/20/81. LIST OF PAGES & TABLE OF CONTENTS
73-10-01	1	03/20/81. FUEL SYSTEM/ENGINE SECTION/
73-10-01	2	03/20/81	
73-10-01	3	03/20/81	
73-10-01	4	03/20/81	
73-10-01	5	03/20/81	
73-10-10	1	03/20/81. FUEL PUMP/ENGINE DRIVEN/.
73-10-10	2	03/20/81	
73-10-10	3	03/20/81	

B E E C H C R A F T
DUKE B60
I L L U S T R A T E D P A R T S C A T A L O G

73-10-01
FUEL SYSTEM/ENGINE SECTION/

BEECHCRAFT
DUKE B60
ILLUSTRATED PARTS CATALOG



B60-282-2

B E E C H C R A F T
DUKE B60
I L L U S T R A T E D P A R T S C A T A L O G

GAMA/ATA CODE & INDEX NO.	PART NO.	DESCRIPTION	UNITS PER ASSY	USABLE ON CODE
10-01	60-910001-3	POWER PLANT INSTL	NP	1
	60-910001-9	POWER PLANT INSTL	NP	2
	60-910001-601	. POWER PLANT ASSY,LH	1	
	60-910001-602	. POWER PLANT ASSY,RH	1	
- 1	96-910004-61	. HOSE ASSY,FUEL PUMP TO FLOW TRANSMITTER	1	
- 2	MS21919DG16	. CLAMP	1	
	MS21919DG14	. CLAMP	1	
		/ATTACHING PARTS/		
- 3	AN520-10R9	. SCREW	1	
	MS20365-1032C	. NUT	1	

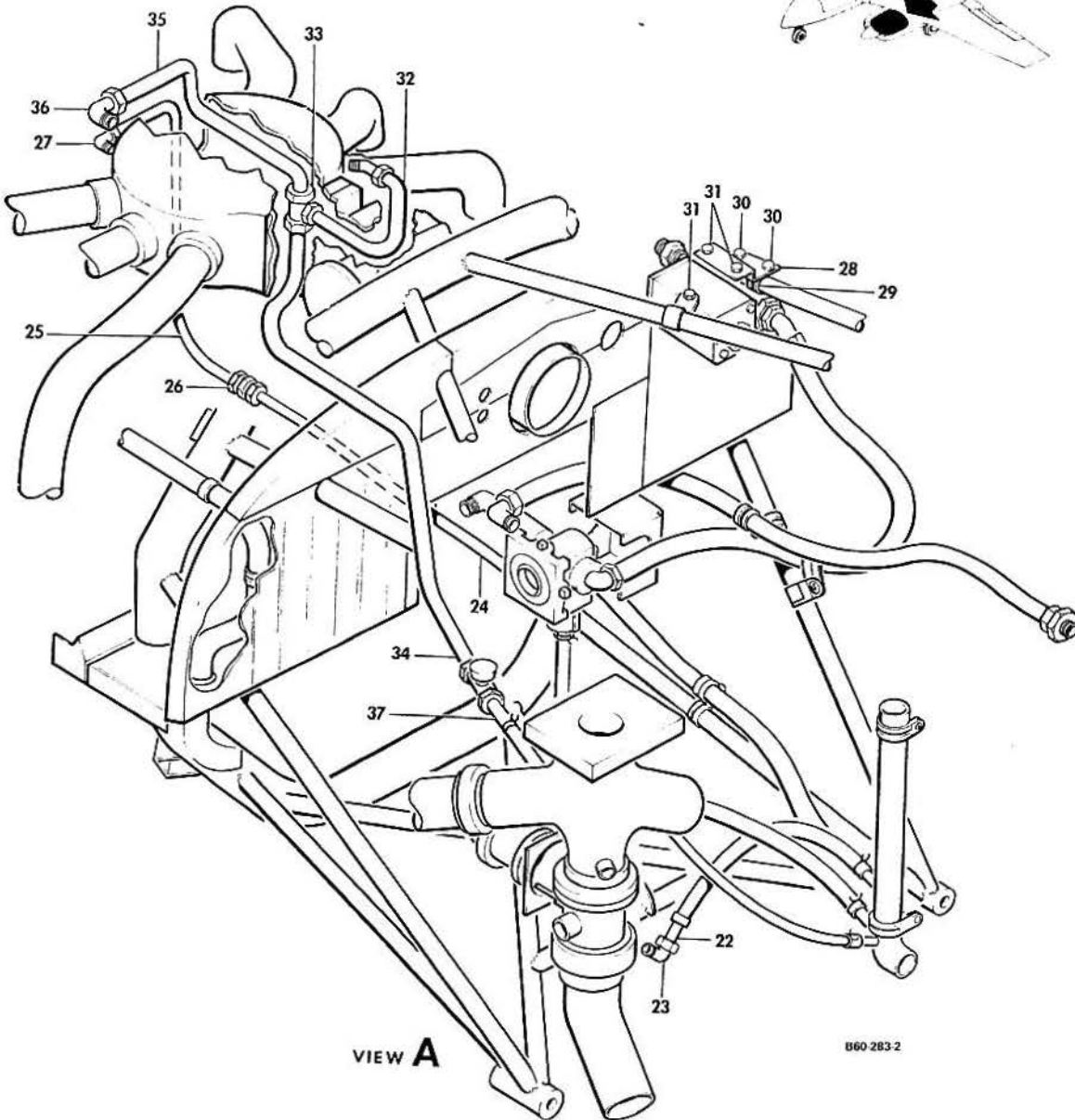
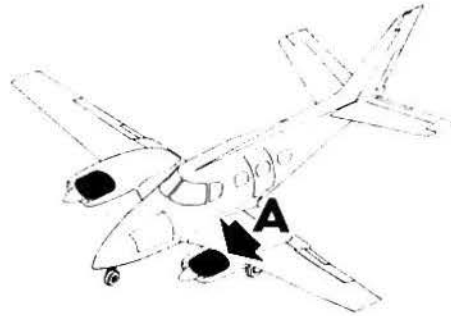
- 4	9133-54B1	. TRANSMITTER,FUEL FLOW	1	1
	102-389034-3	. TRANSDUCER,FUEL FLOW	1	2
- 5	AN837-6	. ELBOW,FUEL FLOW TRANSMITTER	1	1
- 6	AN815-6	. UNION,FUEL FLOW TRANSMITTER	1	1
- 7	AN924-6	. NUT,FUEL FLOW TRANSMITTER	1	1
	MS29512-06	. O RING,FUEL FLOW TRANSMITTER	2	1
- 8	330997F6-0344	. HOSE ASSY/FOR REPLACEMENT PARTS ORDER TUBE	1	3
		ASSY 60-910001-15,HOSE ASSY 60-910001-1 BRACKET 60-910001-19/		
	60-910001-17	. HOSE ASSY	1	4
	60-910001-15	. TUBE ASSY	1	4
	60-910001-19	. BRACKET	1	4
	MS21919DG16	. CLAMP	2	3
	MS21919DG19	. CLAMP	1	3
	MS21919DG26	. CLAMP	1	3
	MS21919H6	. CLAMP	1	4
		/ATTACHING PARTS/		
	AN520-10R	. SCREW	2	3
	130909812	. BOLT	1	4
	AN960-10	. WASHER	AR	
	MS21043-3	. NUT	AR	

- 9	60-910031-3	. ELBOW,FUEL PUMP INLET	1	
	MS35490-11	. GROMMET,FUEL PUMP	1	
- 10	50-389141-1	. PUMP ASSY,FUEL/SEE 73-10-10/	1	1
	50-389141-13	. PUMP ASSY,FUEL/SEE 73-10-10/	1	2
	626839	. SPACER,FUEL PUMP MOUNTING	1	
	AN4059-1	. GASKET,FUEL PUMP MOUNTING	2	
- 11	96-910004-57	. HOSE ASSY,FUEL PUMP INLET TO FIREWALL	1	
- 12	MS21919DG20	. CLAMP	1	
	AN742D12	. CLAMP	1	
		/ATTACHING PARTS/		
- 13	130909814	. BOLT	1	
	130909N29	. NUT	1	

- 14	MS20822-8B	. ELBOW	1	
	MS20822-8	. ELBOW/ALTERNATE FOR MS20822-8B/	1	
- 15	114693-2-2200	. TUBE,FUEL PUMP DRAIN	1	
	CS6A	. CLAMP	2	
- 16	60-910026	. MANIFOLD ASSY,OVERBOARD DRAIN	1	
		/ATTACHING PARTS/		
- 17	AN520-10R16	. SCREW	2	
- 18	AN742D16	. CLAMP,MANIFOLD	2	
	100696A-ZC016	. SPACER	2	

- 19	114693-2-01808	. HOSE,FUEL MANIFOLD DRAIN	1	
	CS6A	. CLAMP,HOSE	2	
- 20	MS20825-4	. TEE	1	
- 21	60-910001-5	. TUBE ASSY,WASTE GATE ACTUATOR DRAIN	1	
	MS20819-4D	. SLEEVE	1	
	AN818-4D	. NUT	1	
	4V50X5	. ELBOW,WASTE GATE ACTUATOR DRAIN	1	

BEECHCRAFT
DUKE 860
ILLUSTRATED PARTS CATALOG



B60 283-2

B E E C H C R A F T
DUKE B60
I L L U S T R A T E D P A R T S C A T A L O G

GAMA/ATA CODE & INDEX NO.	PART NO.	DESCRIPTION							UNITS PER ASSY	USABLE ON CODE
		1	2	3	4	5	6	7		
10-01 - 22	114693-2-01800	1	
	CS6A	2	
- 23	AN833-4	1	
	AN924-4	1	
	AN960-716	2	
- 24	96-910004-21	1	
- 25	96-910004-3	1	
- 26	AN815-4D	1	
- 27	50-910436	1	
	MS35489-8S	1	
- 28	60-910036	1	1
	MS21919H32	3	2
- 29	AN742-14	2	1
	MS21919H14	2	2
	TA742S10	1	1
	MS21919H10	1	2
		/ATTACHING PARTS/								
- 30	MS27039-1-08	2	1
	MS35207-263	4	2
	AN960-10	AR	
	MS21043-3	AR	
- 31	AN4H4A/M/	3	1
	AN960-416	3	1
		*								
- 32	96-910004-33	1	
- 33	AN824-4D	1	
- 34	96-910004-15	1	
- 35	96-910004-1	1	
- 36	96-920014	1	
- 37	96-910004-27	1	

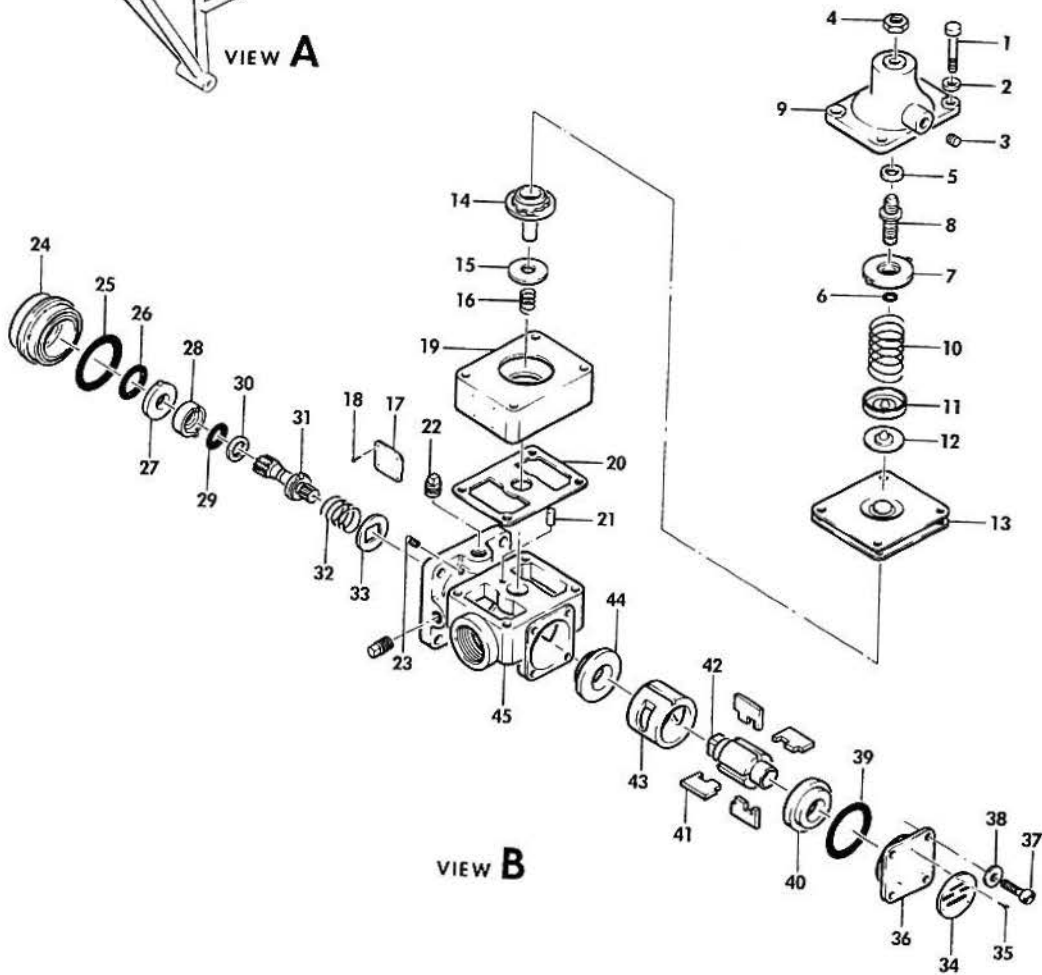
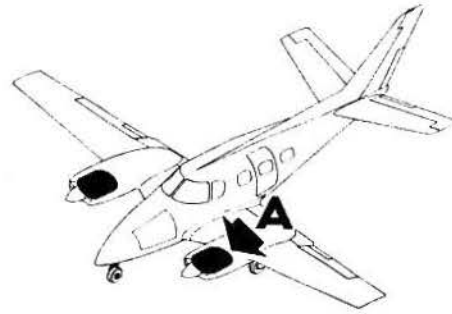
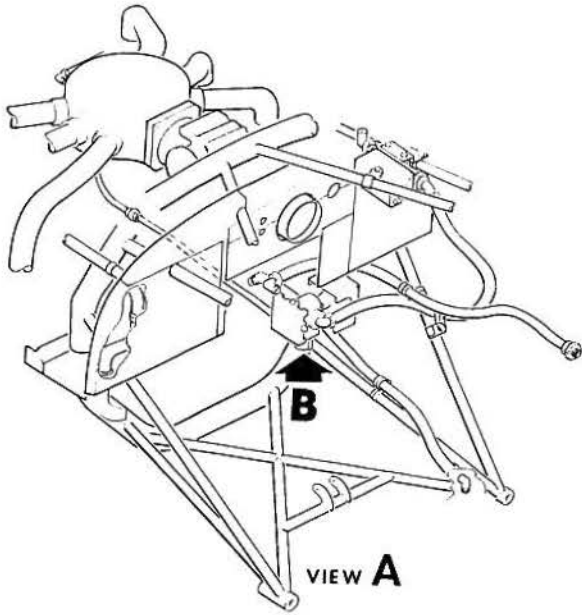
CODES OF EFFECTIVITY

1	P-247 THRU P-426	2	P-427 THRU P-429
	P-430		P-431 THRU P-433
	P-434 THRU P-465		P-466 AND AFTER
3	P-247 THRU P-462	4	P-463 AND AFTER

B E E C H C R A F T
DUKE B60
I L L U S T R A T E D P A R T S C A T A L O G

73-10-10
FUEL PUMP/ENGINE DRIVEN/

BEECHCRAFT
DUKE B60
ILLUSTRATED PARTS CATALOG



B60-283-2

B E E C H C R A F T
DUKE B60
I L L U S T R A T E D P A R T S C A T A L O G

GAMA/ATA CODE & INDEX NO.	PART NO.	DESCRIPTION	UNITS PER ASSY	USABLE ON CODE
		1 2 3 4 5 6 7		
10-10	50-389141-1	PUMP,ENGINE DRIVEN FUEL	2	1
	50-389141-13	PUMP,ENGINE DRIVEN FUEL	2	2
- 1	AN500A10-22	. SCREW	4	
- 2	RA4105	. WASHER	4	
- 3	RA9087	. PLUG,VENTED	1	
- 4	RA5234	. LOCKNUT,ADJUSTING SCREW	1	
- 5	RB8358-515-5/16	. PACKING	1	
	RA9056	. SCREW ASSY,ADJUSTING	1	
- 6	RA6424	. RING,LOCK	1	
- 7	RA9152	. NUT,ADJUSTING	1	
- 8	RB9095	. SCREW,ADJUSTING	1	
- 9	RB5314	. COVER,RELIEF VALVE	1	
- 10	RA7294	. SPRING,COMPRESSION	1	
- 11	RA5331	. SEAT,SPRING	1	
- 12	RA5361	. PLATE,DIAPHRAGM	1	
- 13	RA5326	. DIAPHRAGM	2	
- 14	RB9089	. VALVE,RELIEF	1	
- 15	RA9092	. VALVE,BYPASS	1	
- 16	RA9093	. SPRING,COMPRESSION	1	
- 17	RA9099	. PLATE,INSTRUCTION	1	
		/ATTACHING PARTS/		
- 18	MS21318-1	. SCREW	2	
		-----*		
- 19	RD9082	. HOUSING,VALVE	1	
- 20	RA8987	. GASKET	1	
- 21	RA9098	. PIN,LOCATING	1	
- 22	MS20913-1	. PLUG,PIPE	4	
- 23	AN565B8H3	. SETSCREW	1	
- 24	RA8930	. LOCKNUT ASSY	1	1
- 25	MS29513-218	. PACKING,PREFORMED	1	
- 26	MS29513-114	. PACKING,PREFORMED	1	
- 27	RA7654	. DISC,SEAL	1	
- 28	RA7653	. PLATE,SEAL	1	
- 29	MS29513-112	. PACKING,PREFORMED	1	
- 30	RA10476	. RETAINER,PACKING	1	
- 31	RD8935-3	. COUPLING,DRIVE	1	
- 32	RA8297	. SPRING,COMPRESSION	1	
- 33	RA5299	. SEAT,SPRING	1	
- 34	RB10896	. PLATE,IDENTIFICATION	1	
		/ATTACHING PARTS/		
- 35	MS21318-1	. SCREW	3	
		-----*		
- 36	RB9083	. COVER,END	1	
		/ATTACHING PARTS/		
- 37	MS35265-43	. SCREW	4	
- 38	AN960-8L	. WASHER	4	
		-----*		
- 39	MS29513-216	. PACKING,PREFORMED	1	
- 40	RB9084	. BEARING,SLEEVE	1	
- 41	RB9573	. BLADE,PUMP	4	
- 42	RB9085	. ROTOR,PUMP	1	
- 43	RB9572	. LINER,PUMP	1	
- 44	RB9084	. BEARING,SLEEVE	1	
- 45	RD9081-4	. HOUSING ASSY,PUMP	1	
	RA22767	PARTS KIT,PUMP OVERHAUL	1	
	RB15259-3	PLUG,PROTECTIVE	2	2

CODES OF EFFECTIVITY

1	P-247 THRU P-426	2	P-427 THRU P-429
	P-430		P-431 THRU P-433
	P-434 THRU P-465		P-466 AND AFTER

