

B E E C H C R A F T
DUKE 660
I L L U S T R A T E D P A R T S C A T A L O G

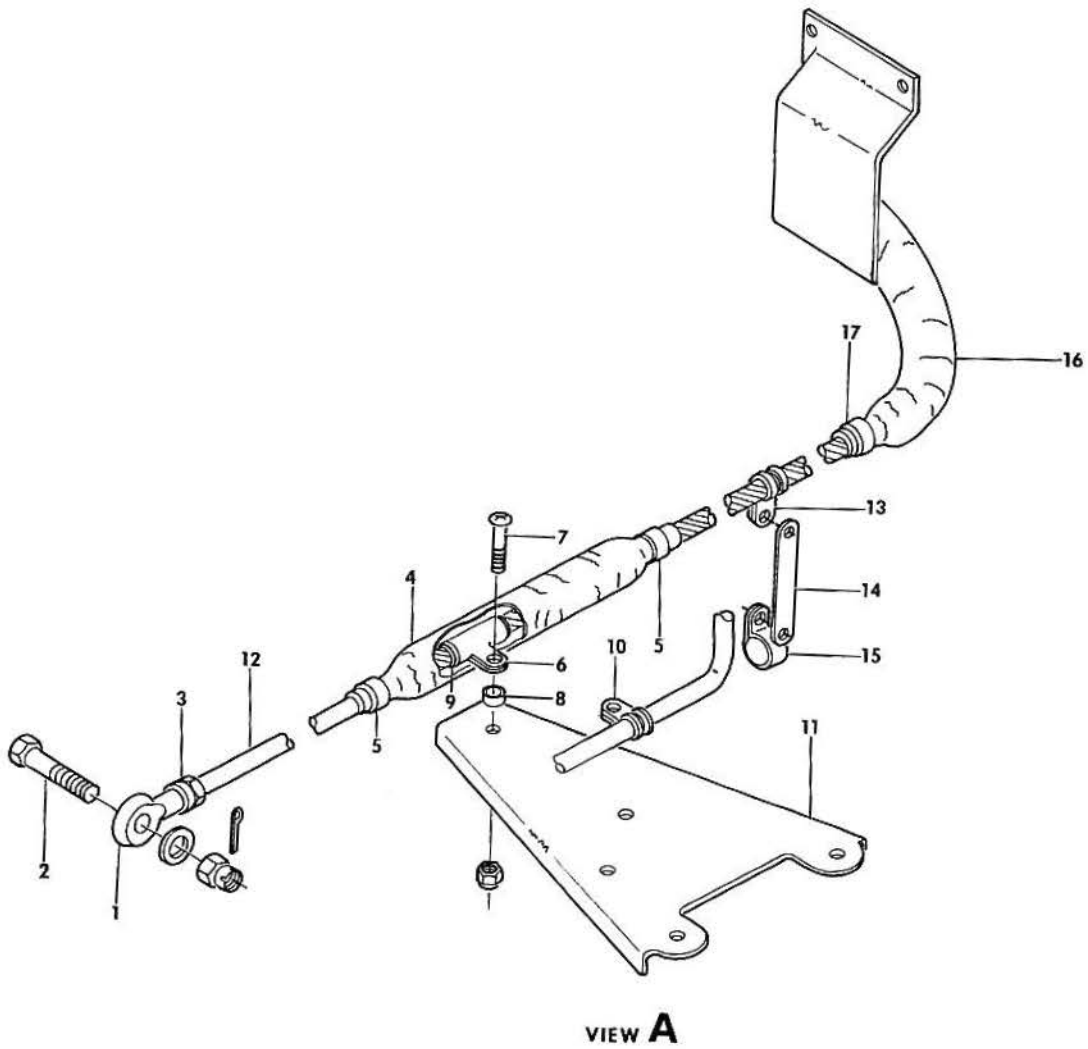
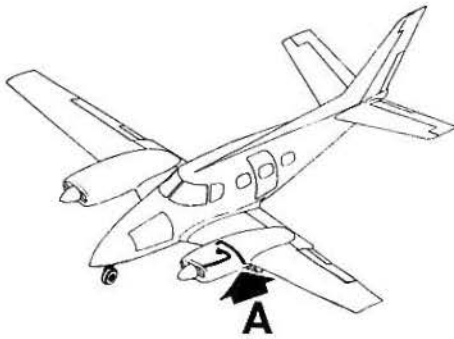
LIST OF PAGES & TABLE OF CONTENTS
FOR
CHAPTER 76-00-00 ENGINE CONTROLS

SYS/SUB-SYS/ CHAP SECTION	PAGE NO.	EFFECTIVE DATE	TABLE OF CONTENTS
76-00-00	1	04/16/82. LIST OF PAGES & TABLE OF CONTENTS
76-10-01	1	03/20/81. ENGINE CONTROLS INSTALLATION.
76-10-01	2	03/20/81	
76-10-01	3	04/16/82	
76-10-01	4	03/20/81	
76-10-01	5	04/16/82	
76-10-01	6	03/20/81	
76-10-01	7	04/16/82	
76-15-10	1	03/20/81. ENGINE CONTROLS/PEDESTAL/
76-15-10	2	03/20/81	
76-15-10	3	03/20/81	
76-15-10	4	03/20/81	
76-15-10	5	03/20/81	
76-15-10	6	03/20/81	
76-15-10	7	03/20/81	

B E E C H C R A F T
DUKE B60
I L L U S T R A T E D P A R T S C A T A L O G

76-10-01
ENGINE CONTROLS INSTALLATION

BEECHCRAFT
DUKE B60
ILLUSTRATED PARTS CATALOG

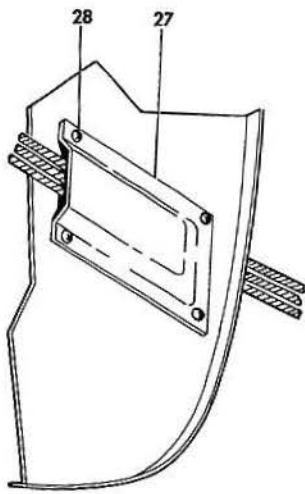


B60-1594

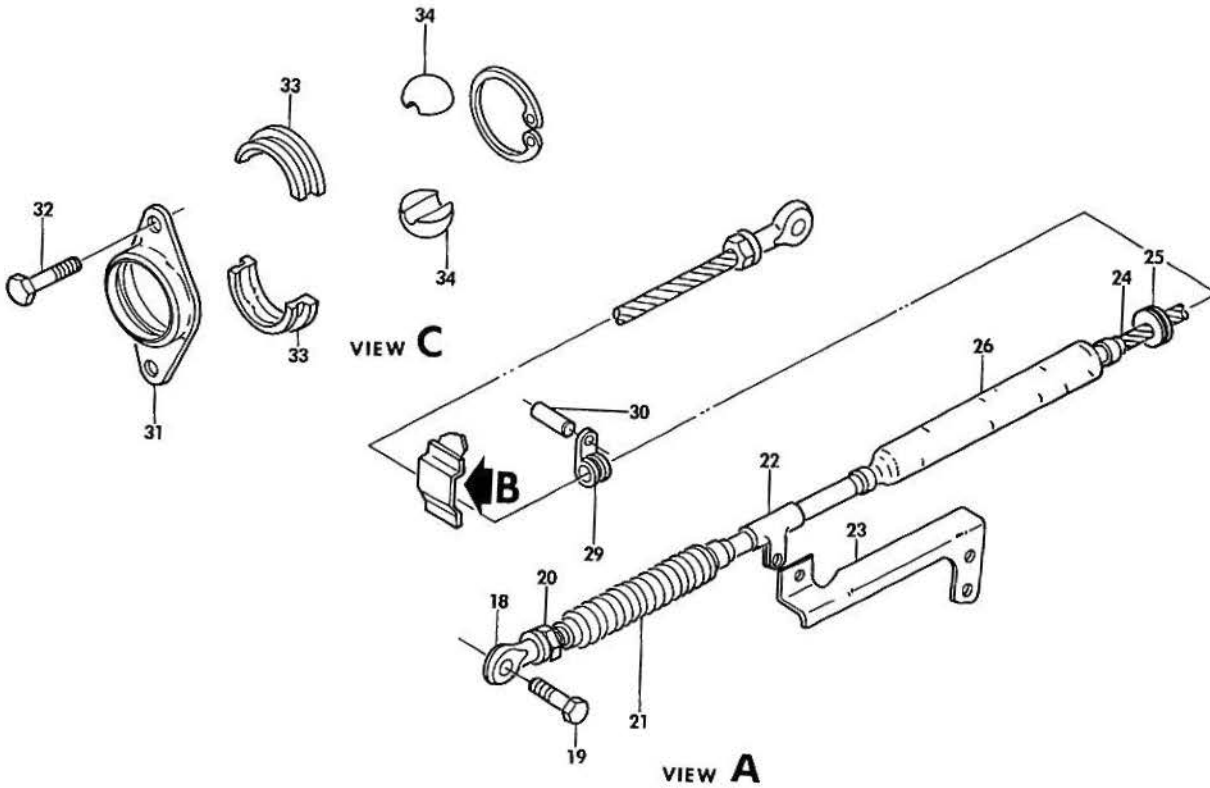
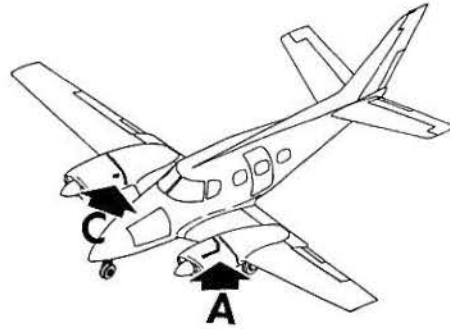
B E E C H C R A F T
DUKE B60
I L L U S T R A T E D P A R T S C A T A L O G

GAMA/ATA CODE & INDEX NO.	PART NO.	DESCRIPTION							UNITS PER ASSY	USABLE ON CODE
		1	2	3	4	5	6	7		
10-01	60-94000G	CONTROLS INSTALLATION,ENGINE.							NP	
- 1	K 131765-1F	. ROD END,PROP GOVERNOR CONTROL							1	
		/ATTACHING PARTS/								
- 2	AN3-11/M/ 100951X04OZL	. BOLT.							1	
	AN960-10L 130909N6	. WASHER.							2	
	MS24665-132	. WASHER.							1	
	AN316-4R	. NUT,CASTELLATED							1	
- 3	AN935-416	. PIN,COTTER.							1	
		. NUT,CHECK							1	
		. WASHER,LOCK							1	
- 4	R 131545S9-0160	. FIRE SLEEVE,PROP CONTROL.							2	
		/ATTACHING PARTS/								
- 5	6208	. CLAMP							2	
- 6	PP561DS4	. CLAMP,PROP CONTROL.							2	
		/ATTACHING PARTS/								
- 7	AN520-10R	. SCREW							1	
- 8	100696X-ZG00B AN960-10 MS20365-1032C	. BUSHING							1	
		. WASHER.							1	
		. NUT							1	
- 9	S241	. BUSHING							2	
- 10	MS21919DG4	. CLAMP,FUEL PUMP BALANCE LINE.							2	
		/ATTACHING PARTS/								
	AN520-10R	. SCREW							1	
	AN960-10 MS20365-1032C	. WASHER.							1	
		. NUT							1	
- 11	60-940012	. BRACKET,PROP CONTROL.							2	1
	60-940012-3	. BRACKET,PROP CONTROL.							2	4
	60-940012-5	. BRACKET,PROP CONTROL.							2	3
- 12	40851-63	. CONTROL CABLE ASSY,PROP GOVERNOR LH							1	1
	40851-65	. CONTROL CABLE ASSY,PROP GOVERNOR RH							1	1
		/ORDER KIT 60-9009-5 TO REPLACE ABOVE/								
	102-389010-5	. CONTROL CABLE ASSY,LH PROP GOVERNOR							1	2
	102-389010-7	. CONTRL CABLE ASSY,RH PROP GOVERNOR							1	2
- 13	AN742-4	. CLAMP,PROP CONTROL CABLE.							2	
		/ATTACHING PARTS/								
	130909B12	. BOLT.							1	
	AN960-10	. WASHER.							1	
	130909N29	. NUT							1	
- 14	96-940002-3	. TAB,PROP CONTROL CABLE.							2	
		/ATTACHING PARTS/								
	130909B12	. BOLT.							1	
	AN960-10	. WASHER.							1	
	130909N29	. NUT							1	
- 15	MS21919DG10	. CLAMP,TAB TO ENGINE MOUNT							2	
- 16	131545S9-0360	. SLEEVE,FIRE/LH PROP CONTROL/.							1	
	131545S9-0580	. SLEEVE,FIRE/RH PROP CONTROL/.							1	
		/ATTACHING PARTS/								
- 17	6208	. CLAMP							1	
		/ATTACHING PARTS/								
	MS21919DG10	. CLAMP,PROP CONTROL SUPPORT/RH FIREWALL/							1	
		/ATTACHING PARTS/								
	AN515-8R	. SCREW							1	
	NAS43D03-16	. SPACER.							1	
	AN960-8	. WASHER.							1	
	130909N28	. NUT							1	

BEECHCRAFT
DUKE B60
ILLUSTRATED PARTS CATALOG



VIEW B



VIEW C

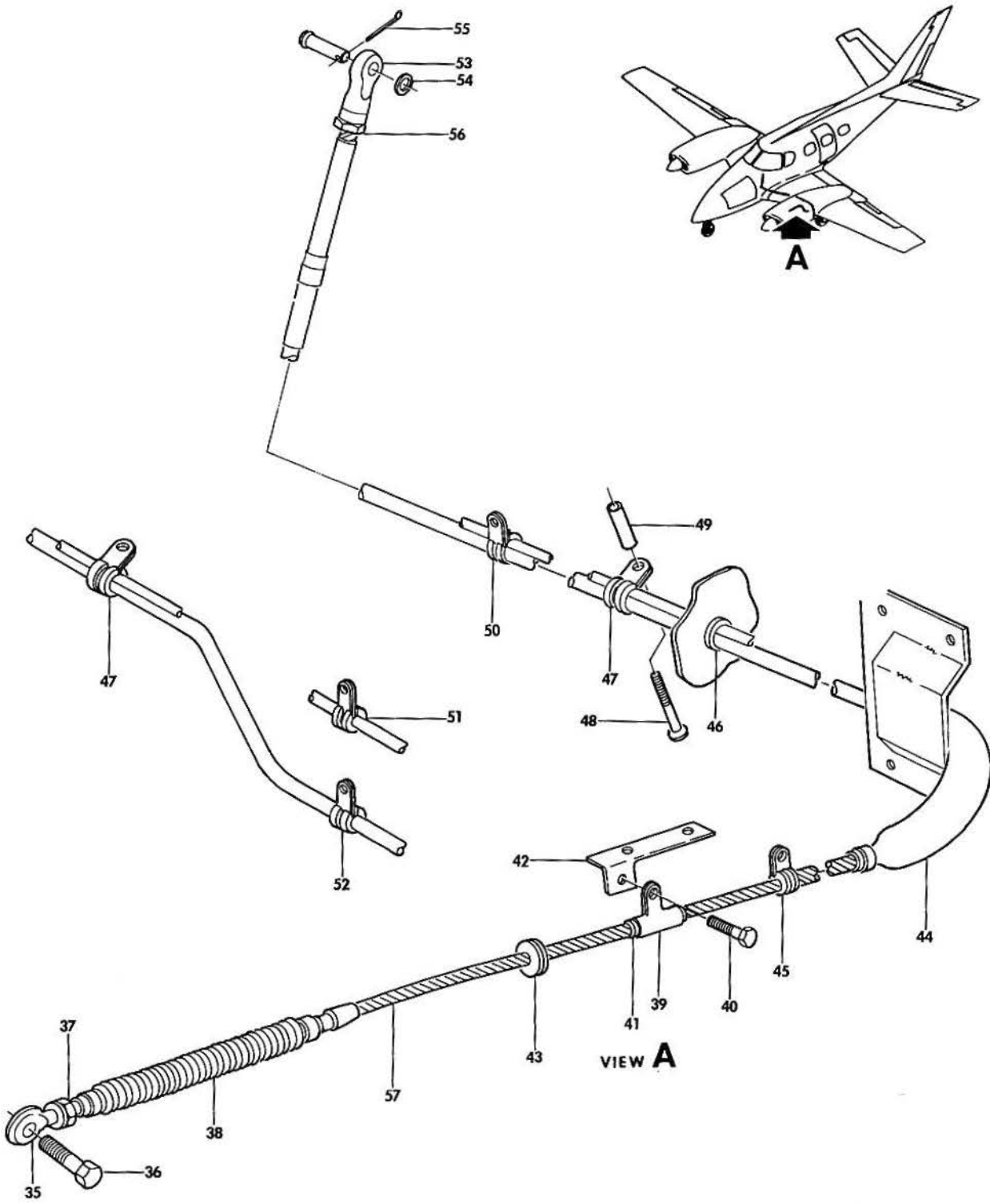
VIEW A

B60-159-5

B E E C H C R A F T
DUKE B60
I L L U S T R A T E D P A R T S C A T A L O G

GAMA/ATA CODE & INDEX NO.	PART NO.	DESCRIPTION	UNITS PER ASSY	USABLE GN CODE
		1 2 3 4 5 6 7		
10-01 - 18	R 131765-1F	. ROD END, THROTTLE CONTROL. /ATTACHING PARTS/	2	
- 19	AN3-11/M/ 100951X040ZL AN960-10L 130909N6 MS24665-132	. BOLT. WASHER. WASHER. NUT, CASTELLATED PIN, COTTER.	1 2 1 1 1	
- 20	AN316-4R AN935-416	. NUT, LOCKING WASHER, LOCK	1 1	
- 21	AD964-2	. DEICER BOOT /ATTACHING PARTS/	2	
	SST2	. STRAP	2	
- 22	PP561DS4	. CLAMP, THROTTLE CONTROL SUPPORT. /ATTACHING PARTS/	2	
	130909B20 AN960-10 130909N29	. BOLT. WASHER. NUT	1 4 1	
- 23	60-940019-1	. BRACKET /ATTACHING PARTS/	2	
	AN936B616	. WASHER, LOCK/BOLT FURNISHED WITH ENGINE/	2	
- 24	41539-1 41539-2	. CONTROL CABLE ASSY, LH THROTTLE. CONTROL CABLE ASSY, RH THROTTLE. /ORDER KIT 60-9009-1 FOR SPARES/	1 1	1 1
	102-389009-3 102-389009-5	. CONTROL CABLE ASSY, LH THROTTLE. CONTROL CABLE ASSY, RH THROTTLE.	1 1	2
R	131545S10-0360	. SLEEVE, FIRE/LH ONLY/.	1	
- 25	MS35490-10	. GROMMET	2	
- 26	R 131545S10-0140	. SLEEVE, FIRE/RH ONLY/. /ATTACHING PARTS/	1	
	6208	. CLAMP	2	
- 27	96-940000-10 96-940000-9	. PLATE, FIREWALL LH PLATE, FIREWALL RH /ATTACHING PARTS/	1 1	
- 28	130909B14 AN960-10L	. BOLT. WASHER.	4 4	
- 29	MS21919DG10	. CLAMP, RH THROTTLE CONTROL TO FIREWALL /ATTACHING PARTS/	1	
- 30	AN515-8R12 NAS43DD3-16 AN960-8 130909N28	. SCREW SPACER. WASHER. NUT	1 1 1 1	
- 31	112436-6	. RETAINER. /ATTACHING PARTS/	1	
- 32	MS35206-228	. SCREW	2	
- 33	112412	. GROMMET HALF, RH THROTTLE CONTROL.	2	
- 34	112413-8	. BALL HALF, RH THROTTLE CONTROL	2	

BEECHCRAFT
DUKE B60
ILLUSTRATED PARTS CATALOG



B60-159-6

B E E C H C R A F T
DUKE 860
I L L U S T R A T E D P A R T S C A T A L O G

GAMA/ATA CODE & INDEX NO.	PART NO.	DESCRIPTION	UNITS PER ASSY	USABLE ON CODE
		1 2 3 4 5 6 7		
10-01 - 35	K 131553-4F	. ROD END, MIXTURE CONTROL /ATTACHING PARTS/	2	
- 36	130909B37	. BOLT.	1	
	100951X040ZZ	. WASHER.	2	
	AN960-416L	. WASHER.	1	
	130909N7	. NUT, CASTELLATED	1	
	MS24665-132	. PIN, CUTTER.	1	
- 37	AN316-4R	. NUT, LOCKING	1	
	AN935-416	. WASHER, LOCK	1	
	60-940015-1	*-----*		
	60-940018-1	. SHIELD ASSY, ICE PROTECTION.	1	5
- 38	AD964-2	. SHIELD ASSY, ICE PROTECTION. BOOT, DEICER	1 2	5
	SST2	/ATTACHING PARTS/ . STRAP	2	
- 39	PP561DS4	*-----*		
		. CLAMP	2	
- 40	130909B20	/ATTACHING PARTS/		
	AN960-10	. BOLT.	1	
	NAS430D3-16	. WASHER.	1	
	130909N29	. SPACER.	1	
		. NUT	1	
- 41	R 60-940000-19	*-----*		
- 42	50-944072-7	. BUSHING	2	
- 43	MS35490-10	. SUPPORT	2	
- 44	R 131545S9-0410	. GROMMET	2	
	131545S14-0120	. SLEEVE, FIRE/MIXTURE CONTROL LH NACELLE/	1	
	131545S9-0330	. SLEEVE, FIRE/MIXTURE CONTROL LH NACELLE/	1	
	131545S14-0120	. SLEEVE, FIRE/MIXTURE CONTROL RH NACELLE/	1	
	6208	. SLEEVE, FIRE/MIXTURE CONTROL RH NACELLE/ /ATTACHING PARTS/ . CLAMP	1	
- 45	MS21919DG10	*-----*		
- 46	MS35489-19	. CLAMP, LH MIXTURE CONTROL TO FIREWALL.	1	
- 47	MS21919DG11	. GROMMET	2	
		. CLAMP, CONTROL SUPPORT	2	
- 48	MS35206-263	/ATTACHING PARTS/		
- 49	1006960-ZC016	. SCREW	1	
	AN960-10	. SPACER.	1	
	130909N29	. WASHER.	1	
		. NUT	1	
- 50	MS21919DG11	*-----*		
- 51	MS21919DG10	. CLAMP, CONTROLS SUPPORT LH/BL.12.0/	1	
- 52	MS21919DG4	. CLAMP, PROP & THROTTLE CONTROL/RH BL.12.0/	1	
- 53	R 131553-4F	. CLAMP, MIXTURE CONTROL/RH BL.12.0/	1	
		. ROD END, ENGINE CONTROLS/PEDESTAL END/	6	
- 54	AN960-416	/ATTACHING PARTS/		
- 55	MS24665-151	. WASHER.	1	
- 56	AN316-4R	. PIN, CUTTER.	1	
	AN935-416	. NUT, LOCK.	1	
		. WASHER.	1	
- 57	50-389010-25	*-----*		
	102-389010-9	CABLE, MIXTURE CONTROL/LH & RH/.	2	1
	102-389010-11	/ORDER 60-9009-3 FOR SPARES/ CONTROL CABLE, LH MIXTURE.	1	2
		CONTROL CABLE, RH MIXTURE.	1	2
		SEE CHAPTER 76-15-10 FOR PEDESTAL CONTROLS		

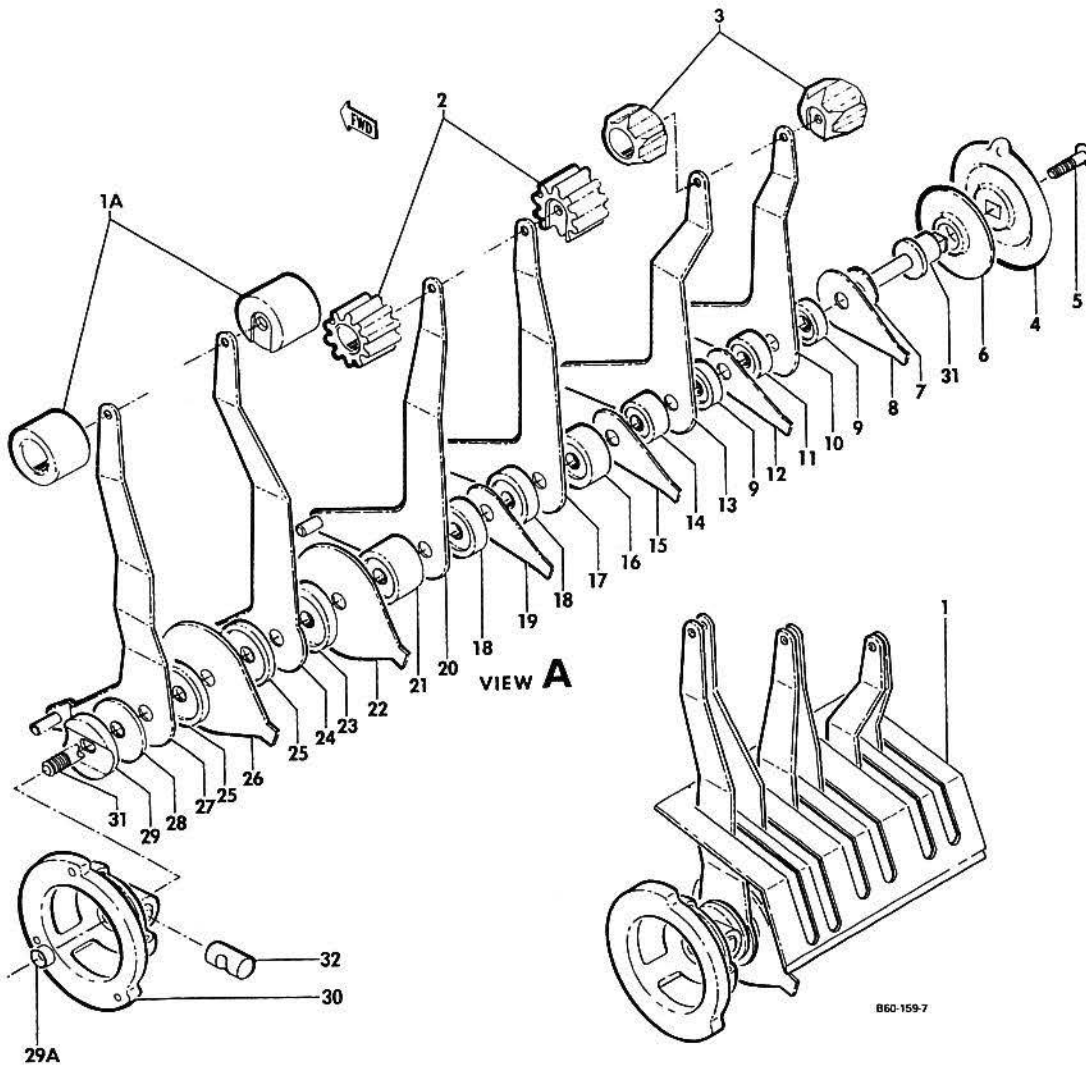
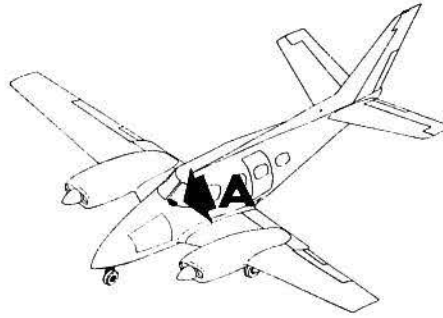
CODES OF EFFECTIVITY

- | | | | |
|---|---|---|----------------------------------|
| 1 | P-247 THRU P-405
P-407, P-408,
P-410 THRU P-436 | 2 | P-406, P-409,
P-437 AND AFTER |
| 3 | P-556 AND AFTER | 4 | P-406, P-409
P-437 THRU P-555 |
| 5 | P-485,
P-497 AND AFTER | | |

BEECHCRAFT
DUKE B60
ILLUSTRATED PARTS CATALOG

76-15-10
ENGINE CONTROLS/PEDESTAL/

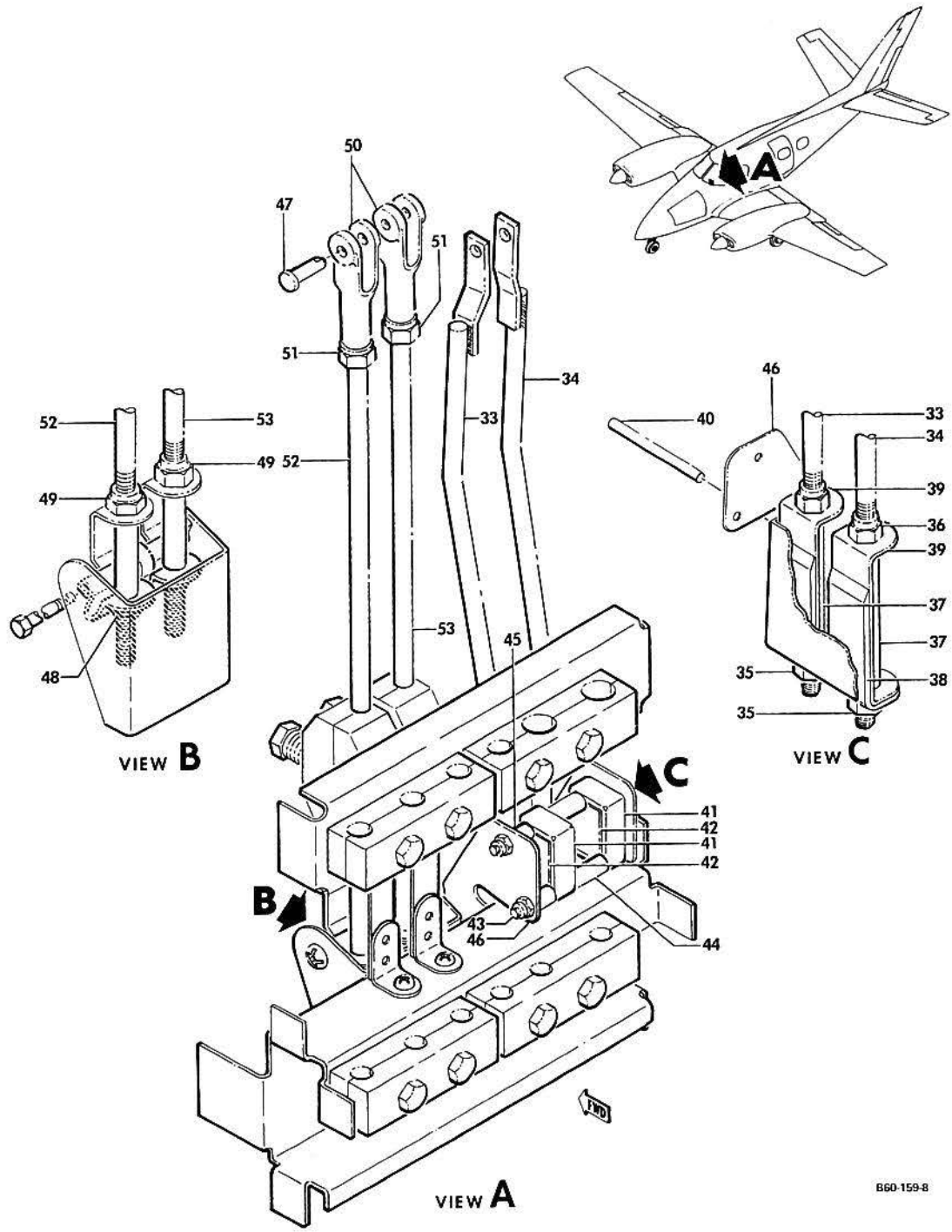
BEECHCRAFT
DUKE B60
ILLUSTRATED PARTS CATALOG



B E E C H C R A F T
DUKE B60
I L L U S T R A T E D P A R T S C A T A L O G

GAMA/ATA CODE & INDEX NO.	PART NO.	DESCRIPTION	UNITS PER ASSY	USABLE ON CODE
		1 2 3 4 5 6 7		
15-10 - 1	60-524187-1	PLATE,ENGINE CONTROL LEVERS	1	
	60-524011-601	PEDESTAL ASSY-ENGINE CONTROLS ONLY.	1	
- 1A	50-524513	. KNOB,THROTTLE CONTROL LEVER	2	
		/ATTACHING PARTS/		
	MS24694S53	. SCREW/SUPERSEDES AN509-10R11/	1	
	AN960PD10	. WASHER.	1	
	130909N29	. NUT	1	
- 2	50-524506	. KNOB,PROPELLER CONTROL.	2	
		/ATTACHING PARTS/		
	MS24694S53	. SCREW/SUPERSEDES AN509-10R11/	1	
	AN960PD10	. WASHER.	1	
	130909N29	. NUT	1	
- 3	50-524504	. KNOB,MIXTURE CONTROL.	2	
		/ATTACHING PARTS/		
	MS24694S53	. SCREW/SUPERSEDES AN509-10R11/	1	
	AN960PD10	. WASHER.	1	
	130909N29	. NUT	1	
- 4	60-524077-3	. WHEEL,ENGINE CONTROL FRICTION LOCK.	1	
		/ATTACHING PARTS/		
- 5	NAS1190-3P8W	. SCREW	1	
	100951X064ZW	. WASHER.	1	
- 6	60-524071	. END PLATE	1	
		/ATTACHING PARTS/		
	MS24694S48	. SCREW/SUPERSEDES AN509-10R6/.	3	
- 7	60-524138	. WASHER,ENGINE CONTROL FRICTION LOCK	1	
- 8	60-524076-11	. KEEPER.	1	
- 9	60-524074-31	. SPACER,PHENOLIC FRICTION LOCK	2	
- 10	60-524091-3	. LEVER ASSY,RH MIXTURE CONTROL	1	
- 11	60-524074-29	. SPACER,PHENOLIC FRICTION LOCK	1	
- 12	60-524076-1	. KEEPER.	1	
- 13	60-524091-1	. LEVER ASSY,LH MIXTURE CONTROL	1	
- 14	60-524074-27	. SPACER,PHENOLIC FRICTION LOCK	1	
- 15	60-524076-9	. KEEPER.	1	
- 16	60-524074-25	. SPACER,PHENOLIC FRICTION LOCK	1	
- 17	60-524090-21	. LEVER ASSY,RH PROP CONTROL.	1	
- 18	60-524074-23	. SPACER,PHENOLIC FRICTION LOCK	2	
- 19	60-524076-7	. KEEPER.	1	
- 20	60-524090-17	. LEVER ASSY,LH PROP CONTROL.	1	
- 21	60-524074-21	. SPACER,PHENOLIC FRICTION LOCK	1	
- 22	60-524076-5	. KEEPER.	1	
- 23	60-524074-11	. SPACER,PHENOLIC FRICTION LOCK	1	
- 24	60-524089-11	. LEVER ASSY,RH THROTTLE.	1	
- 25	60-524074-19	. SPACER,PHENOLIC FRICTION LOCK	2	
- 26	60-524076-3	. KEEPER.	1	
- 27	60-524089-9	. LEVER ASSY,LH THROTTLE.	1	
- 28	60-524074-15	. SPACER,PHENOLIC FRICTION LOCK	1	
- 29	60-524073	. SPACER,ALUMINUM	1	
	60-524085-3	. SUPPORT ASSY,ENGINE CONTROL PIVOT	1	
		/ATTACHING PARTS/		
	MS24693S273	. SCREW	3	
	AN960-10L	. WASHER.	3	
	MS21042L3	. NUT	3	
- 29A	06DU03	. BEARING	1	
- 30	60-524081-1	. SUPPORT,ENGINE CONTROL PIVOT.	1	
- 31	60-524094	. SHAFT,ENGINE CONTROL PIVOT.	1	
- 32	1452-054	. NUT,BARREL.	1	

BEECHCRAFT
DUKE B60
ILLUSTRATED PARTS CATALOG

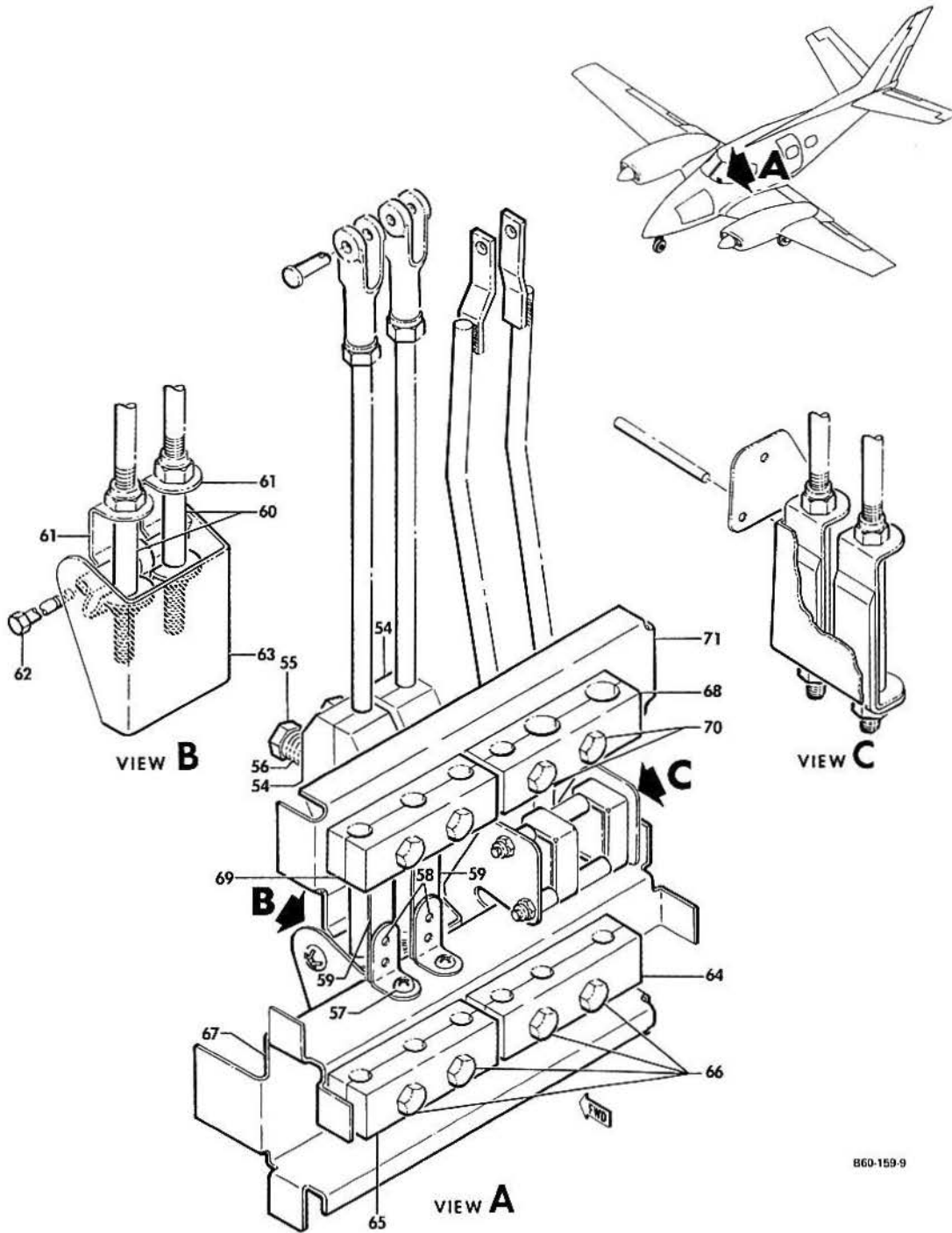


B60-159-8

B E E C H C R A F T
DUKE B60
I L L U S T R A T E D P A R T S C A T A L O G

GAMA/ATA CODE & INDEX NO.	PART NO.	DESCRIPTION	UNITS PER ASSY	USABLE ON CODE		
					1	2
15-10 - 33	60-524093-13	• ROD ASSY,RH THROTTLE SWITCH/LANDING GEAR UP . WARNING/	1			
- 34	60-524093-17	• ROD ASSY,LH THROTTLE SWITCH/LANDING GEAR UP . WARNING/ /ATTACHING PARTS/	1			
	MS24665-151	• PIN,COTTER/ROD ASSY TO THROTTLE LEVER/.	1			
	AN960-10L	• WASHER	1			
- 35	130909N32	• NUT,LOWER	1			
- 36	AN315-4R	• NUT,UPPER	1			
	AN935-416L	• WASHER,LOCK	1			
- 37	100696A-ZP219	• SPACER	2			
- 38	60-524093-1	• ACTUATOR,GEAR UP WARNING	2			
- 39	60-524093-3	• RETAINER,GEAR UP WARNING ACTUATOR	2			
- 40	50-524479-19	• PIN,RETAINER GUIDE /ATTACHING PARTS/	1			
	MS24665-151	• PIN,COTTER	2			
	100696A-YK008	• BUSHING,RETAINER GUIDE	1			
- 41	MS25253-4	• SWITCH,LANDING GEAR UP WARNING	2			
- 42	JV5	• ACTUATOR,SWITCH /ATTACHING PARTS/	2			
- 43	50-524479-21	• STUD	2			
- 44	100696A-ZA020	• SPACER	2			
- 45	100696A-ZA013	• SPACER	2			
	MS21042L04	• NUT	2			
- 46	60-524093-39	• BRACKET ASSY,SWITCH MOUNTING	1			
	NAS696A04K	• NUT PLATE	2			
	60-524093-29	• ROD ASSY,RH PROPELLER DETENT CONTROL	1			
	60-524093-25	• ROD ASSY,LH PROPELLER DETENT CONTROL /ATTACHING PARTS/	1			
- 47	MS20392-2C11	• PIN	1			
	MS24665-151	• PIN,COTTER	1			
- 48	130909N32	• NUT,LOWER	1			
- 49	AN315-4R	• NUT,UPPER	1			
	AN935-416L	• WASHER	1			
- 50	MS27975-4	• CLEVIS	1			
- 51	AN515-4R	• NUT,CHECK	1			
	MS35338-44	• WASHER,LOCK	1			
- 52	60-524093-27	• ROD,RH PROPELLER DETENT CONTROL	1			
- 53	60-524093-23	• ROD,LH PROPELLER DETENT CONTROL	1			

BEECHCRAFT
DUKE B60
ILLUSTRATED PARTS CATALOG



B60-159-9

B E E C H C R A F T
DUKE B60
I L L U S T R A T E D P A R T S C A T A L O G

GAMA/ATA CODE & INDEX NO.	PART NO.	DESCRIPTION							UNITS PER ASSY	USABLE ON CODE
		1	2	3	4	5	6	7		
15-10 - 54	60-524152	• BLOCK, PROPELLER CONTROL FRICTION.							2	
		/ATTACHING PARTS/								
- 55	AN3-22A/M/	• BOLT.							1	
- 56	100943ZV022G	• SPRING.							1	
	AN960-10	• WASHER.							AR	
	AN960-10L	• WASHER.							AR	
	60-524153	• SUPPORT ASSY, FRICTION BLOCK							2	
		/ATTACHING PARTS/								
- 57	MS35207-262	• SCREW/SUPERSEDES AN520-10R7/.							1	
		-----*								
- 58	AN743-13	• BRACKET							1	
- 59	60-524153-1	• SPRING.							1	
	AN362F1032	• NUTPLATE.							1	
- 60	100696X-ZK116	• SPACER.							2	
- 61	50-524478-15	• SPRING.							2	
- 62	AN3-22A/M/	• BOLT.							1	
	100696A-ZW008	• SPACER.							1	
	101321-00B1844	• BUSHING.							1	
	AN960-10L	• WASHER.							1	
	130909N29	• NUT							1	
- 63	50-524479-3	• BRACKET							1	
- 64	60-524093-31	• CLAMP, CONTROLS SUPPORT LOWER LH							1	
- 65	60-524093-33	• CLAMP, CONTROLS SUPPORT LOWER RH							1	
		/ATTACHING PARTS/								
- 66	130909B21	• BOLT.							2	
	AN960-10	• WASHER.							2	
	MK1000-3	• NUTPLATE.							2	
		-----*								
- 67	60-524093-19	• SUPPORT, LOWER							1	
- 68	60-524093-35	• CLAMP, CONTROLS SUPPORT UPPER LH							1	
- 69	60-524093-41	• CLAMP, CONTROLS SUPPORT UPPER RH							1	
		/ATTACHING PARTS/								
- 70	130909B21	• BOLT.							2	
	AN960-10	• WASHER.							2	
	MK1000-3	• NUTPLATE.							2	
		-----*								
- 71	60-524093-37	• SUPPORT, UPPER							1	

