

B E E C H C R A F T  
DUKE B60  
I L L U S T R A T E D P A R T S C A T A L O G

LIST OF PAGES & TABLE OF CONTENTS  
FOR  
CHAPTER 24-00-00 ELECTRICAL POWER

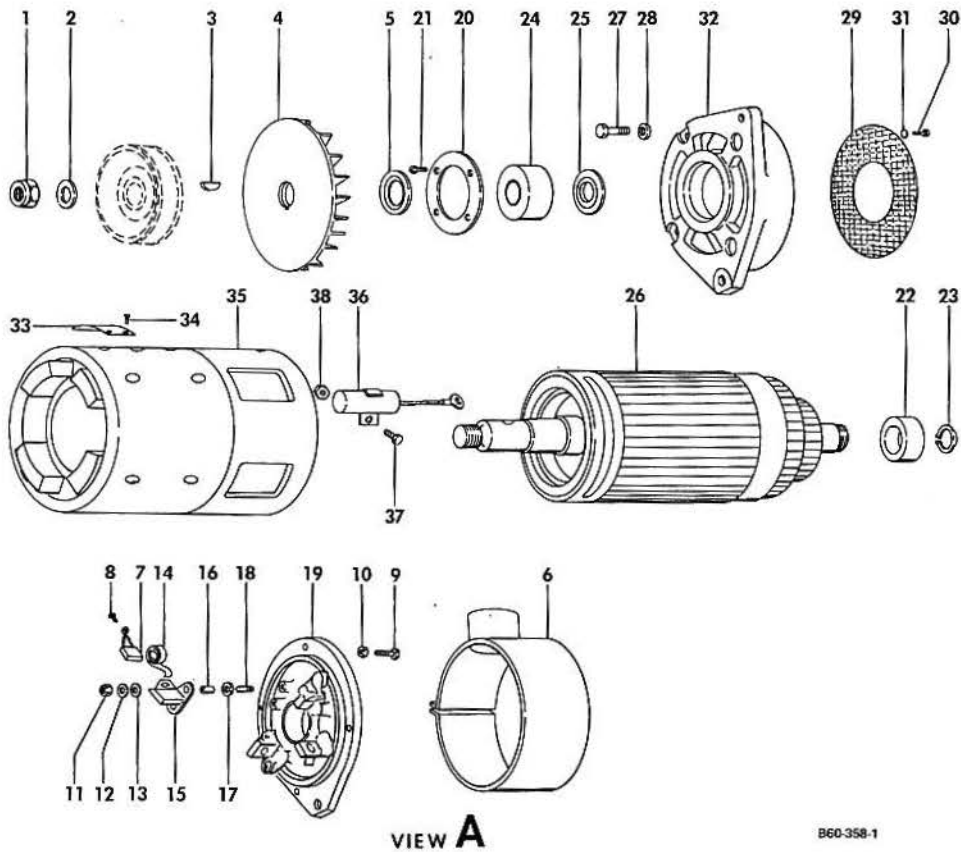
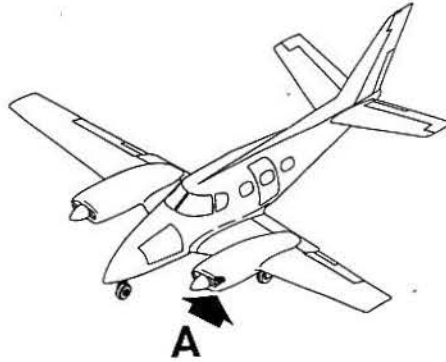
SYS/SUB-SYS/ CHAP SECTION	PAGE NO.	EFFECTIVE DATE	TABLE OF CONTENTS
24-00-00	1	01/08/82	LIST OF PAGES & TABLE OF CONTENTS . . . . .
24-30-01	1	03/20/81	GENERATOR ASSEMBLY. . . . .
24-30-01	2	03/20/81	
24-30-01	3	01/08/82	
24-30-20	1	03/20/81	BATTERY INSTALLATION. . . . .
24-30-20	2	03/20/81	
24-30-20	3	03/20/81	
24-30-20	4	03/20/81	
24-30-20	5	01/08/82	
24-40-01	1	03/20/81	EXTERNAL POWER SUPPLY . . . . .
24-40-01	2	03/20/81	
24-40-01	3	03/20/81	



BEECHCRAFT  
DUKE B60  
ILLUSTRATED PARTS CATALOG

24-30-01  
GENERATOR ASSEMBLY

BEECHCRAFT  
DUKE B60  
ILLUSTRATED PARTS CATALOG



B60-358-1

B E E C H C R A F T  
DUKE 860  
I L L U S T R A T E D P A R T S C A T A L O G

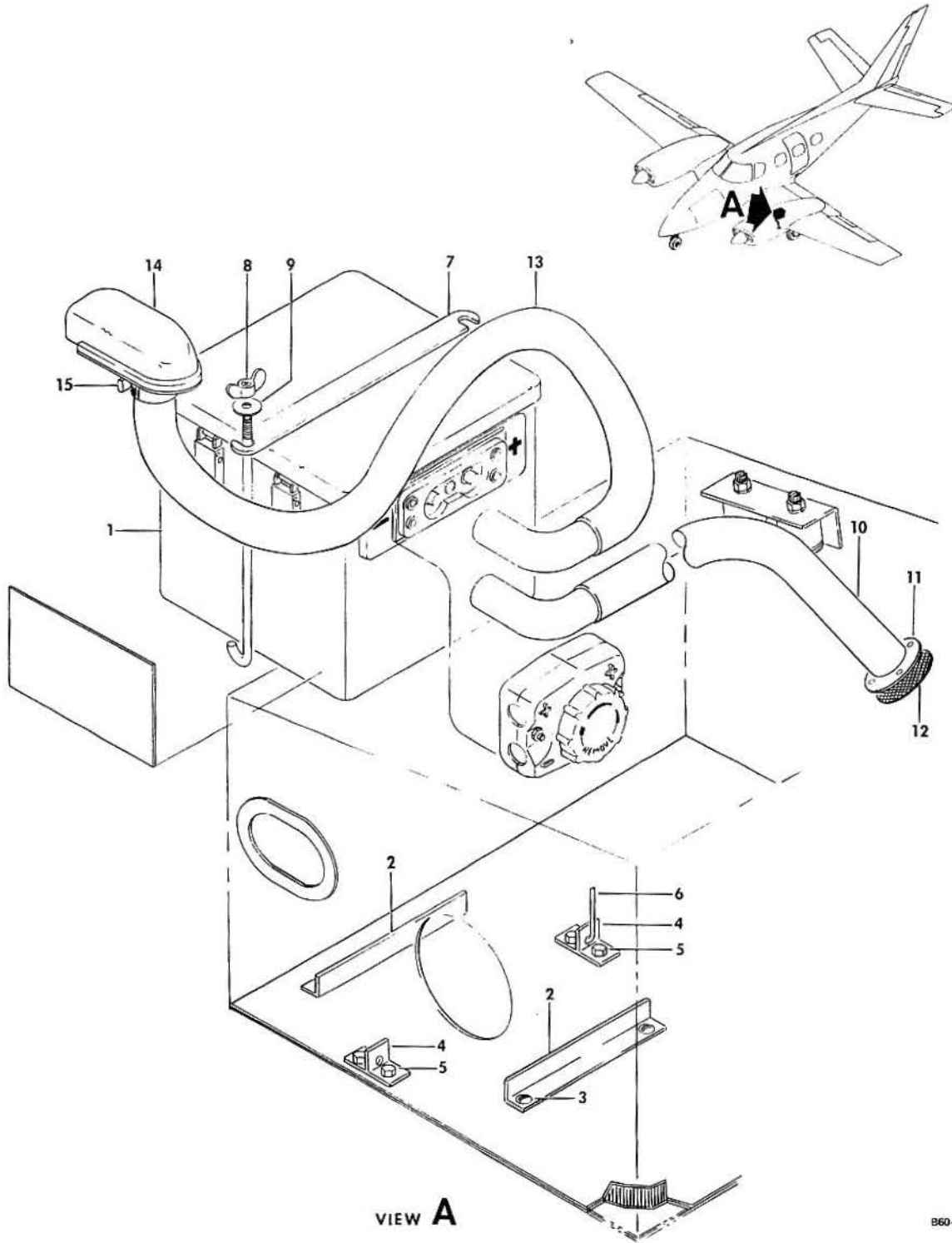
GAMA/ATA CODE & INDEX NO.	PART NO.	DESCRIPTION							UNITS PER ASSY	USABLE ON CODE
		1	2	3	4	5	6	7		
30-01	60-910001-7	GENERATOR ASSEMBLY,30 VOLT 125 AMP. . . . .							1	
- 1	MS20364-1018C	. NUT,PULLEY. . . . .							1	
- 2	30060-1470	. WASHER. . . . .							1	
- 3	MS35756-8	. KEY . . . . .							1	
- 4	30060-1480	. FAN . . . . .							1	
- 5	G128-178	. BAFFLE,DISC . . . . .							1	
- 6	30060-1122	. BAND,BRUSH. . . . .							1	
- 7	30300-1320	. BRUSH,ELECTRICAL CONTACT. . . . .							4	
		/ATTACHING PARTS/								
- 8	05-340205	. SCREW . . . . .							4	
		-----*								
	30060-331	. END BELL ASSY,COMMUTATOR END. . . . .							1	
		/ATTACHING PARTS/								
- 9	130909815	. BOLT. . . . .							4	
- 10	AN960-10L	. WASHER. . . . .							4	
		-----*								
	30059-1008	. . HOLDER ASSY,BRUSH /COMPLETE/. . . . .							4	
		/ATTACHING PARTS/								
- 11	R 130909N29	. . NUT . . . . .							8	
- 12	AN960-10L	. . WASHER. . . . .							8	
- 13	30059-1043	. . WASHER,INSULATION . . . . .							8	
		-----*								
- 14	G26-172	. . . SPRING,BRUSH. . . . .							4	
- 15	30059-1007	. . . HOLDER,BRUSH. . . . .							4	
- 16	05-631128	. . . INSULATION,SLEEVING /RIGID/. . . . .							8	
- 17	05-374094	. . . WASHER,NONMETALIC . . . . .							8	
- 18	05-360006	. . . STUD. . . . .							8	
- 19	30060-1360	. . . END BELL. . . . .							1	
- 20	30060-1070	. . . RETAINER,BEARING. . . . .							1	
		/ATTACHING PARTS/								
- 21	130909815	. . . SCREW . . . . .							4	
		-----*								
- 22	07-111127	. . . BEARING,BALL /COMMUTATOR END/. . . . .							1	
		/ATTACHING PARTS/								
- 23	MS16624-1066	. . . RING,RETAINING. . . . .							1	
		-----*								
- 24	07-111253	. . . BEARING,BALL /DRIVE END/. . . . .							1	
- 25	G128-178	. . . BAFFLE,DISC . . . . .							1	
- 26	30060-1201	. . . ARMATURE. . . . .							1	
	30060-1421	. . . END BELL ASSY,DRIVE END . . . . .							1	
		/ATTACHING PARTS/								
- 27	130909823	. . . BOLT. . . . .							4	
- 28	AN960-10L	. . . WASHER. . . . .							4	
		-----*								
- 29	30060-1270	. . . SCREEN,GUARD. . . . .							1	
		/ATTACHING PARTS/								
- 30	130909823	. . . BOLT. . . . .							4	
- 31	AN960-10L	. . . WASHER. . . . .							4	
		-----*								
- 32	30060-1020	. . . END BELL. . . . .							1	
- 33	06-119698	. . . PLATE,IDENTIFICATION. . . . .							1	
		/ATTACHING PARTS/								
- 34	AN535-2-2	. . . SCREW . . . . .							4	
		-----*								
- 35	30060-325	. . . STATOR ASSY . . . . .							1	
- 36	30060-1260	. . . CAPACITOR AND TERMINAL ASSY . . . . .							1	
		/ATTACHING PARTS/								
- 37	AN507-632R7	. . . SCREW . . . . .							1	
- 38	MS20365-632A	. . . NUT . . . . .							1	
		-----*								



BEECHCRAFT  
DUKE B60  
ILLUSTRATED PARTS CATALOG

24-30-20  
BATTERY INSTALLATION

BEECHCRAFT  
DUKE B60  
ILLUSTRATED PARTS CATALOG

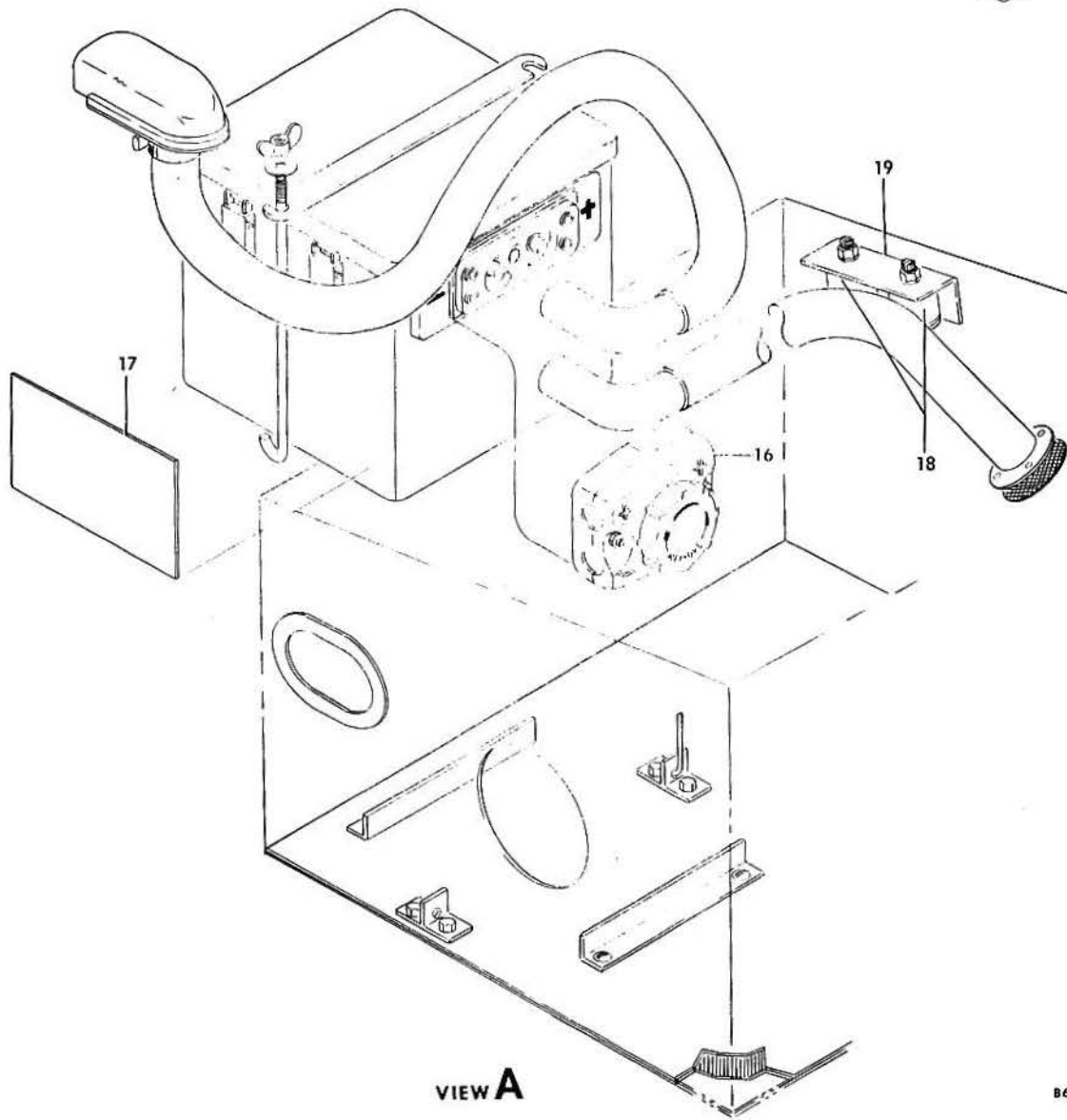
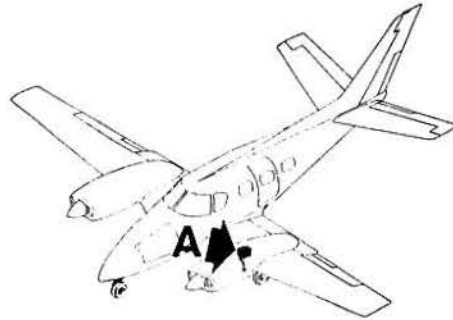




B E E C H C R A F T  
DUKE B60  
I L L U S T R A T E D P A R T S C A T A L O G

GAMA/ATA CODE & INDEX NO.	PART NO.	DESCRIPTION	1 2 3 4 5 6 7							UNITS PER ASSY	USABLE ON CODE
			1	2	3	4	5	6	7		
30-20	60-369000	ELECTRICAL EQUIPMENT INSTL,WING & ENGINE. . . .								NP	
- 1	60-389033-1	. BATTERY AND CASE/24 VOLT-13 AMP HOUR/SEE. . . . GENERAL ELECTRIC SERVICE MANUAL GET3593B LATEST REVISION FOR OPERATION AND SERVICE								1	1
	58-380056-1	. BATTERY/12 VOLT-25 AMP HOUR/SEE GILL ELECTRIC SERVICE MANUAL GSM1277 OR LATEST REVISION FOR OPERATION AND SERVICE/								2	4
	414-189412	. BAR,BUS . . . . .								1	4
	MS25171-4S	. NIPPLE. . . . .								2	4
- 2	60-369000-23	. ANGLE,BATTERY HOLDER. . . . .								2	1
	60-369000-157	. ANGLE,BATTERY HOLDER. . . . . /ATTACHING PARTS/								2	4
- 3	MS35207-264	. SCREW . . . . .								4	
	AN960-10L	. WASHER. . . . .								4	
- 4	60-980031-15	. BRACKET,BATTERY RETAINER. . . . . /ATTACHING PARTS/								2	
- 5	AN3H4A/M/ AN960-10L	. BOLT. . . . . WASHER. . . . .								4 4	
- 6	60-980031-13	. ROD,BATTERY HOLDDOWN. . . . .								2	
- 7	178A3328P21	. LINK,CROSS. . . . . /ATTACHING PARTS/								1	
- 8	AN350-1032	. WING NUT,BATTERY HOLDDOWN . . . . .								2	
- 9	AN970-3	. WASHER. . . . .								2	
- 10	115167CXZ04-1124	. HOSE. . . . .								1	
- 11	60-369000-125	. RETAINER. . . . .								1	
- 12	60-369000-127	. SCREEN. . . . . /ATTACHING PARTS/								1	
	MS35206-229	. SCREW . . . . .								4	
	AN960-6L	. WASHER. . . . .								4	
	MS21042L06	. NUT . . . . .								4	
- 13	115167CXX04-1724	. HOSE. . . . .								1	
- 14	60-369037	. AIR EXHAUST,DUCT ASSY . . . . .								1	
- 14	60-369037-1	. DUCT. . . . .								1	
- 15	AN737TW38	. CLAMP,HOSE. . . . . /ATTACHING PARTS/								1	
	MS35206-227	. SCREW . . . . .								3	
	AN960-6L	. WASHER. . . . .								3	

BEECHCRAFT  
DUKE B60  
ILLUSTRATED PARTS CATALOG



VIEW A

B60-356-6

BEECHCRAFT  
DUKE B60  
ILLUSTRATED PARTS CATALOG

GAMA/ATA CODE & INDEX NO.	PART NO.	DESCRIPTION	UNITS PER ASSY	USABLE ON CODE
		1 2 3 4 5 6 7		
30-20 - 16	MS25182-2	. CONNECTOR, BATTERY . . . . .	1	1
- 17	50-361274-9	. PLACARD . . . . .	1	1
- 18	E2L01-6584B	. RHEOSTAT, PARALLELING RELAY/REPLACES E2R1 RHEOSTAT/	2	1
- 19	60-369000-135	. BRACKET, PARALLELING RELAY RHEOSTAT/REPLACES 60-369000-27 BRACKET/	1	1
NOTE E2R1 RHEOSTAT WILL ONLY FIT 60-369000-27 BRACKET AND E2L01-6584B RHEOSTAT WILL ONLY FIT 60-369000-135 BRACKET				
	60-369042-1	. BOX ASSY, BATTERY/COMPLETE/. . . . . /ORDER 60-3010-1S KIT/	NP	2
	60-369042-11	. BOX ASSY, BATTERY/COMPLETE/. . . . .	1	3
	60-369042-3	. LID ASSY. . . . .	1	2
	60-369042-13	. LID ASSY. . . . .	1	3
	60-369042-5	. STRAP . . . . .	1	4
	VHC340-2	. CATCH, COMPRESSION SPRING. . . . .	4	4
	AN545-8R7	. SCREW . . . . .	4	4
	002-410001-91	. SPACER. . . . .	2	4
	002-410001-93	. PAD . . . . .	2	4
	60-369042-7	. BOX ASSY. . . . .	1	2
	60-369042-15	. BOX ASSY. . . . .	1	3
	VHC340-2	. CATCH, COMPRESSION SPRING. . . . .	4	4
	MS35489-45S	. GROMMET . . . . .	2	3
	FL-BB	. LINER . . . . .	1	4
	115167CX040724	. DUCT, BATTERY VENT . . . . .	1	4
	115167CX204-1404	. DUCT, BATTERY VENT . . . . .	1	4
	AN737TH38	. CLAMP/BATTERY VENT DUCT/. . . . .	1	4

CODES OF EFFECTIVITY

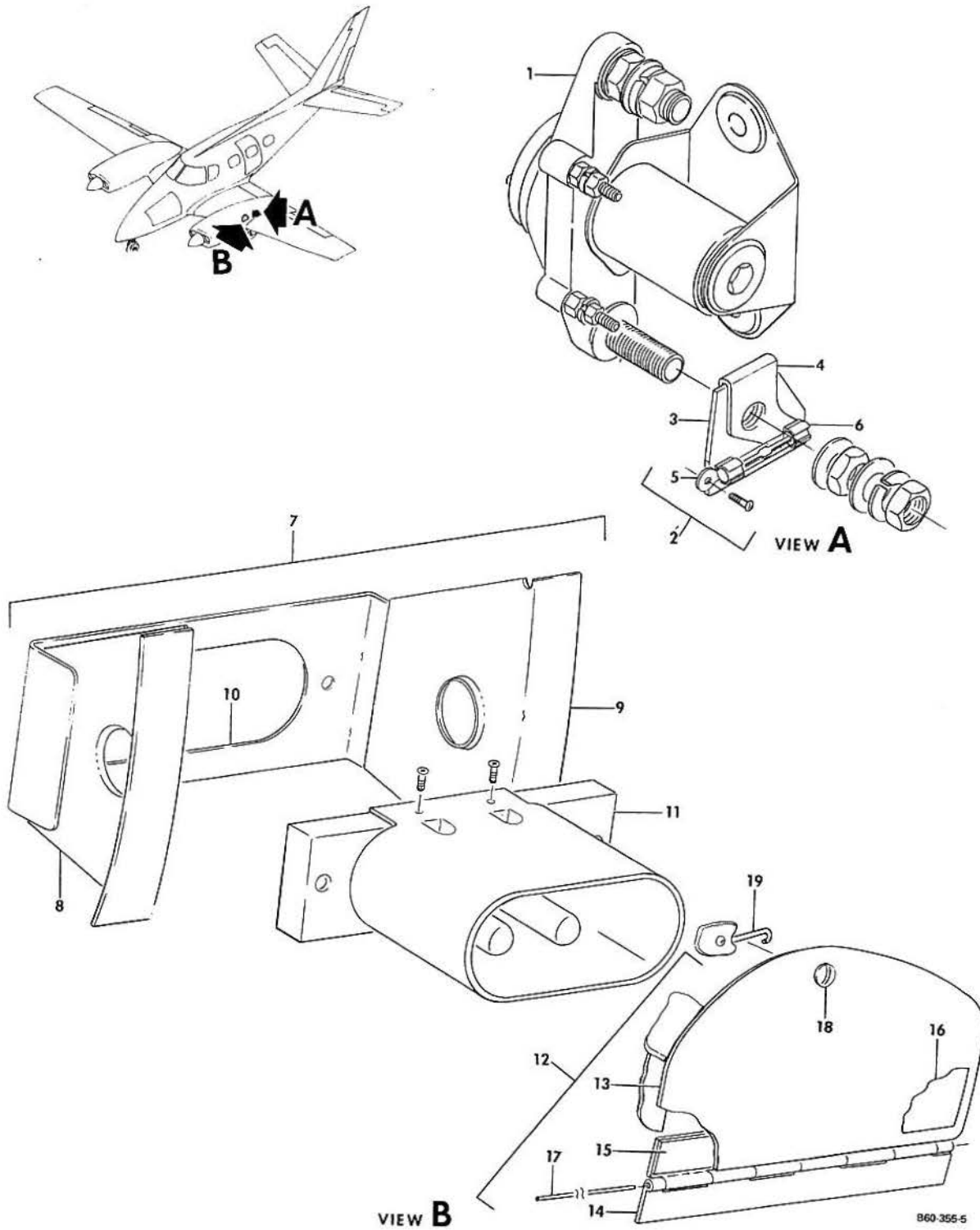
- |                    |                    |
|--------------------|--------------------|
| 1 P-247 THRU P-445 | 2 P-446 THRU P-539 |
| 3 P-540 AND AFTER  | 4 P-446 AND AFTER  |



BEECHCRAFT  
DUKE B60  
ILLUSTRATED PARTS CATALOG

24-40-01  
EXTERNAL POWER SUPPLY

BEECHCRAFT  
DUKE B60  
ILLUSTRATED PARTS CATALOG



B E E C H C R A F T  
DUKE B60  
I L L U S T R A T E D P A R T S C A T A L O G

GAMA/ATA CODE & INDEX NO.	PART NO.	DESCRIPTION	1 2 3 4 5 6 7							UNITS PER ASSY	USABLE ON CODE
			1	2	3	4	5	6	7		
40-01 - 1	6041H189	RELAY,EXTERNAL POWER. /ATTACHING PARTS/								1	
	AN4-4/M/ AN960-416	BOLT. WASHER.								2 2	
	1N4005	. DIODE,EXTERNAL POWER RELAY.								1	
- 2	60-369025-2	FUSEHOLDER ASSY								1	
- 3	60-369025-4	. BLOCK								1	
- 4	60-369025-8	. BUS BAR								1	
- 5	4432	. CLIP ASSEMBLY,FUSE.								1	
- 6	5682-02	. CLIP,FUSE								1	
	AN936868	. LOCKWASHER.								1	
	AGC10	FUSE,EXTERNAL POWER RELAY								1	
- 7	60-980044-7	SUPPORT ASSY,EXTERNAL POWER RECEPTACLE.								1	
- 8	60-980044-1	. BRACKET								1	
- 9	60-980044-2	. BRACKET								1	
- 10	60-980044-5	. CHANNEL								1	
- 11	AN2552A3A	RECEPTACLE,EXTERNAL POWER/28 VOLT DC/								1	
- 12	60-980041	DOOR ASSY,ACCESS.								1	
- 13	60-980041-1	. DOOR.								1	
- 14	60-980041-3	. HINGE,HALF.								2	
- 15	60-980041-5	. SPACER.								1	
- 16	112700	. PLACARD /ATTACHING PARTS/								1	
- 17	105774C-ZA00420	. PIN								1	
- 18	A4-30	. FASTENER,DZUS								1	
- 19	S4-225	. FASTENER,SPRING								1	

\*END\*

